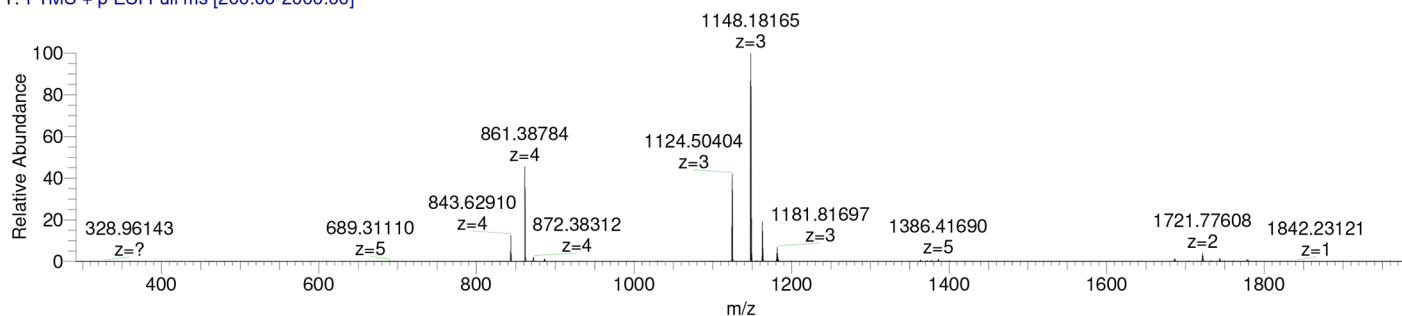
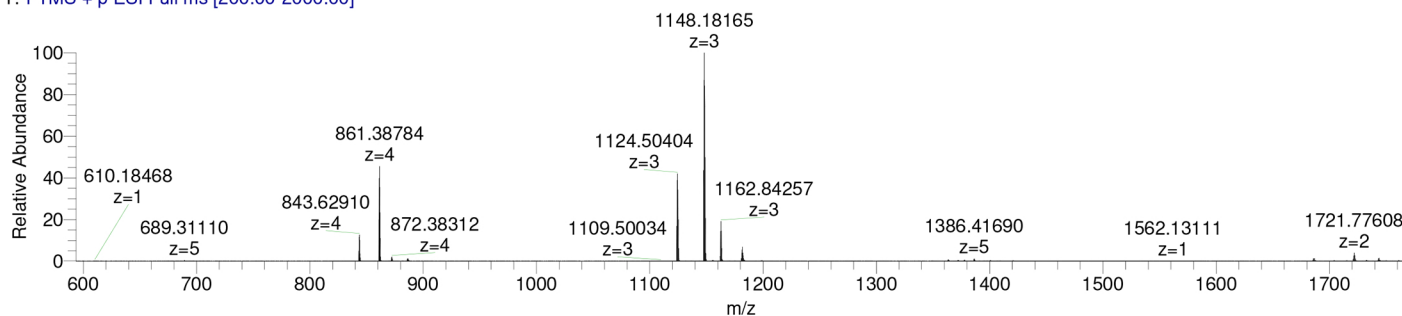


**Figure S1:** Electrospray ionization mass spectrometry (ESI-MS) spectra of the human  $\alpha$ -defensins, HNP1, HNP2, and HNP3.

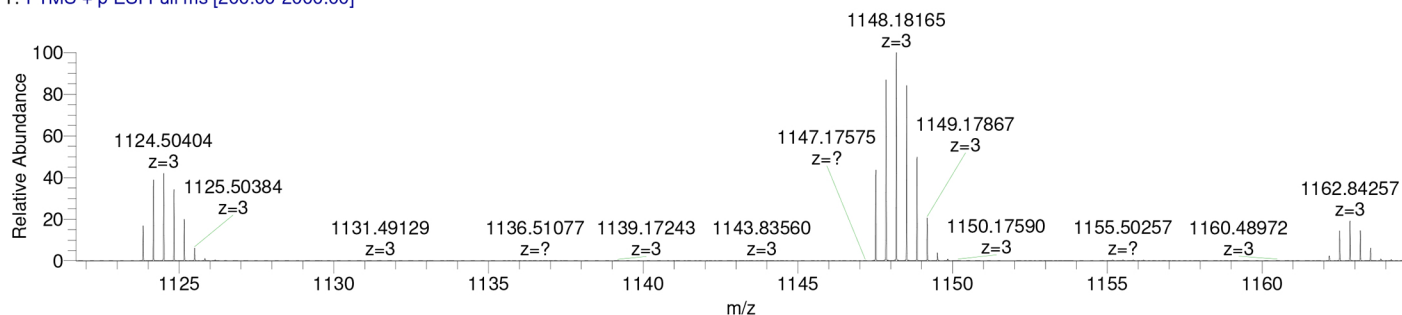
080819servisHR\_4 #60-66 RT: 1.59-1.75 AV: 7 SB: 24 0.04-0.39, 0.09-0.34 NL: 1.35E7  
T: FTMS + p ESI Full ms [200.00-2000.00]



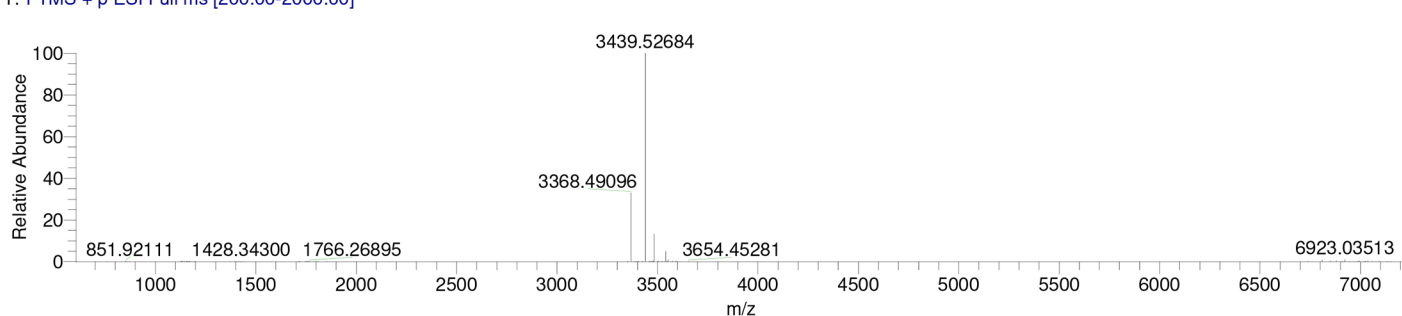
080819servisHR\_4 #60-66 RT: 1.59-1.75 AV: 7 SB: 24 0.04-0.39, 0.09-0.34 NL: 1.35E7  
T: FTMS + p ESI Full ms [200.00-2000.00]



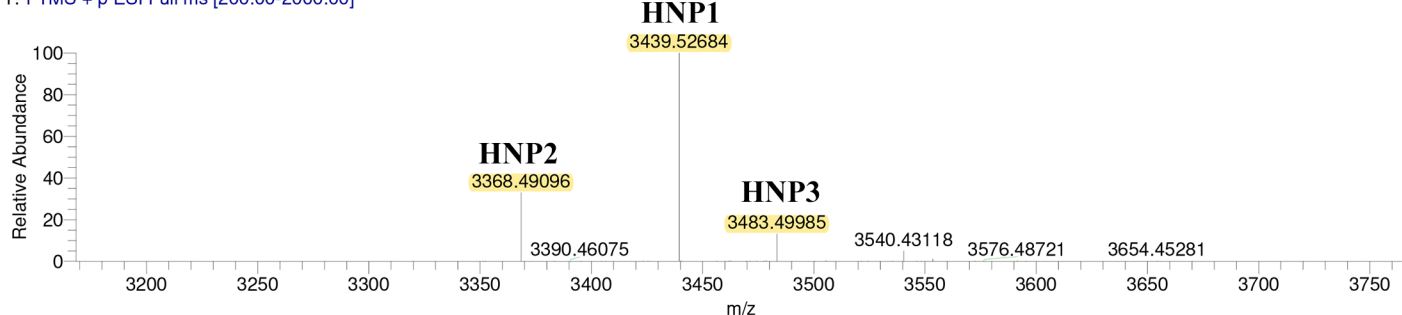
080819servisHR\_4 #60-66 RT: 1.59-1.75 AV: 7 SB: 24 0.04-0.39, 0.09-0.34 NL: 1.35E7  
T: FTMS + p ESI Full ms [200.00-2000.00]



080819servisHR\_4 XT\_00001\_M\_190808161934 #2 RT: 2.00 AV: 1 SB: 2 1.00, 1.00 NL: 2.35E7  
T: FTMS + p ESI Full ms [200.00-2000.00]



080819servisHR\_4 XT\_00001\_M\_190808161934 #2 RT: 2.00 AV: 1 SB: 2 1.00, 1.00 NL: 2.35E7  
T: FTMS + p ESI Full ms [200.00-2000.00]



**Table S1:**  $\alpha$ -Defensins (HNP1-3) concentrations obtained by HPLC measurements in patients with various diagnoses.

Patient	$\alpha$ -defensin (HNP1-3) concentrations (mg/L)					
	PJI	TEP	IA	AR	REA	RHA
1	234.5	38	115	0.0	0.0	28.5
2	232	0.0	150	0.0	45	0.0
3	356	0.0	99.5	0.0	0.0	201
4	75.5	0.0	14.5	0.0	0.0	0.0
5	80	13.5	2042	0.0	47	0.0
6	36.5	37	677.5	0.0	0.0	0.0
7	653	0.0	133.5	0.0	61	0.0
8	388.5	0.0	328	0.0	23	37.4
9	965.5	13.5	186	0.0	116.5	191.5
10	468.5	0.0	174	13.5	96	73
11	295.5	29.5	454	7.5	19.5	67
12	110	38	109	26	103.5	59
13	93	16	135.5	0.0	7	68.5
14	138.0	0.0	113.5	0.0	58	345.5
15	162.5	0.0	1272	0.0	0.0	128.5
16	267	0.0	2635	0.0	160.5	0.0
17	282	0.0	277	0.0	108	47
18	706	0.0	323.5	23.5	58.5	168.5
19		0.0	348.5	0.0	72	53.5
20		0.0	377.5	0.0		11.5
21		7.5	470.5	0.0		46
22		0.0	477	0.0		87
23		0.0	238.5	0.0		35
24		26.0	284.5	0.0		40.5
25		0.0	591.5	0.0		8.5
26		9	464.5	0.0		61
27			343.5	7.0		24
28			398.5	0.0		62
29			282.5	0.0		565.5
30			158	0.0		
31			355.5	0.0		
32			225.0			
33			493			
34			296			

AR = arthrosis, IA = infectious arthritis, PJI = periprosthetic joint infections, REA = reactive arthritis, RHA = rheumatoid arthritis, TEP = total endoprosthesis.