

Web-based supplementary materials for “Partially-Latent Class Models (pLCM) for Case-Control Studies of Childhood Pneumonia Etiology”

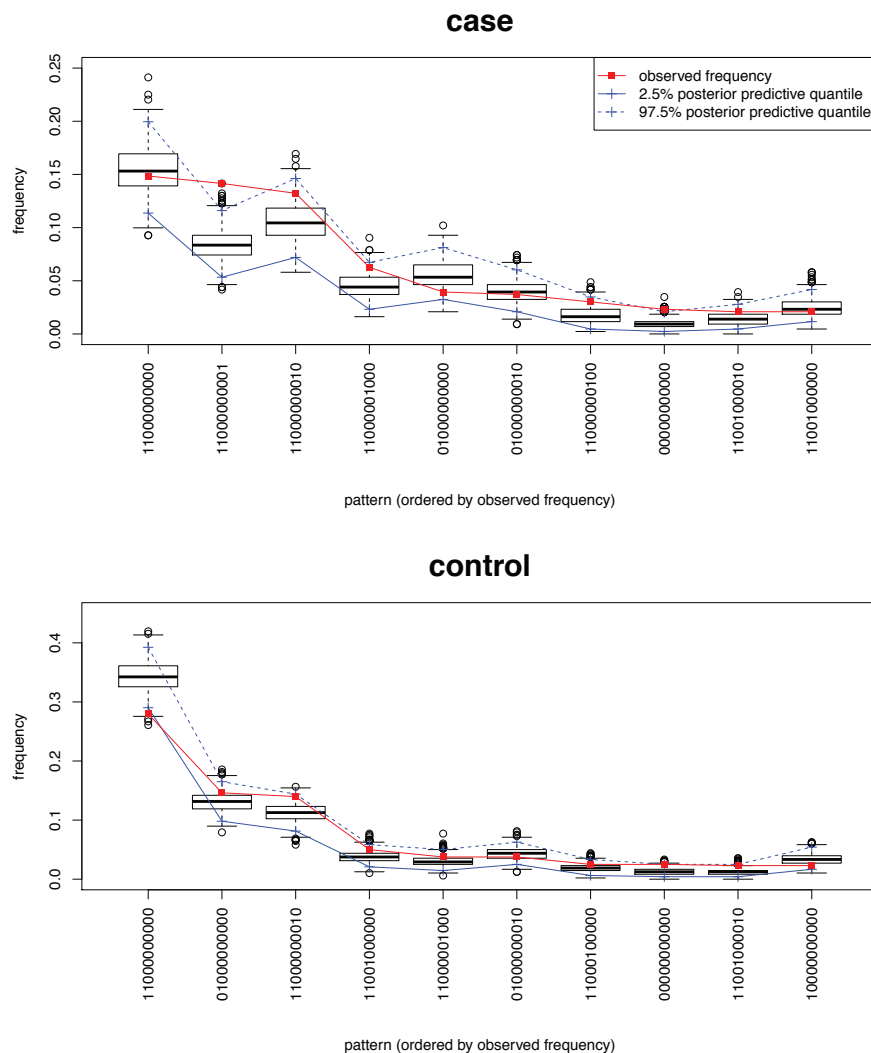


Fig. S1: Posterior predictive checking for 10 most frequent BrS measurement patterns among cases and controls with expert priors on TPRs.

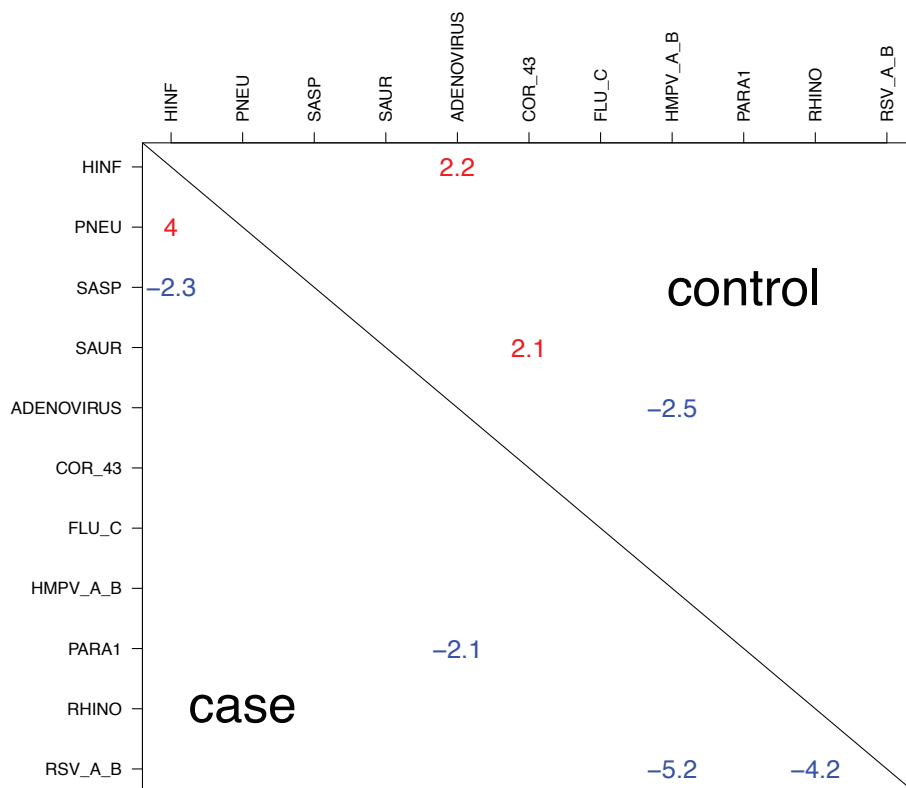


Fig. S2: Posterior predictive checking for pairwise odds ratios separately for cases (lower triangle) and controls (upper triangle) with expert priors on TPRs. Each entry is a standardized log odds ratio (SLOR): the observed log odds ratio for a pair of BrS measurements minus the mean LOR for the posterior predictive distribution divided by the standard deviation of the posterior predictive distribution. The first significant digit of absolute SLORs are shown in red for positive and blue for negative values, and only those greater than 2 are shown.