

TAXON

International Journal of Taxonomy, Phylogeny and Evolution

Electronic Supplement to

**Molecular delimitation of clades within
New World species of the “spiny solanums”
(*Solanum* subg. *Leptostemonum*)**

Stephen Stern, Maria de Fátima Agra & Lynn Bohs

Taxon 60: 1429–1441

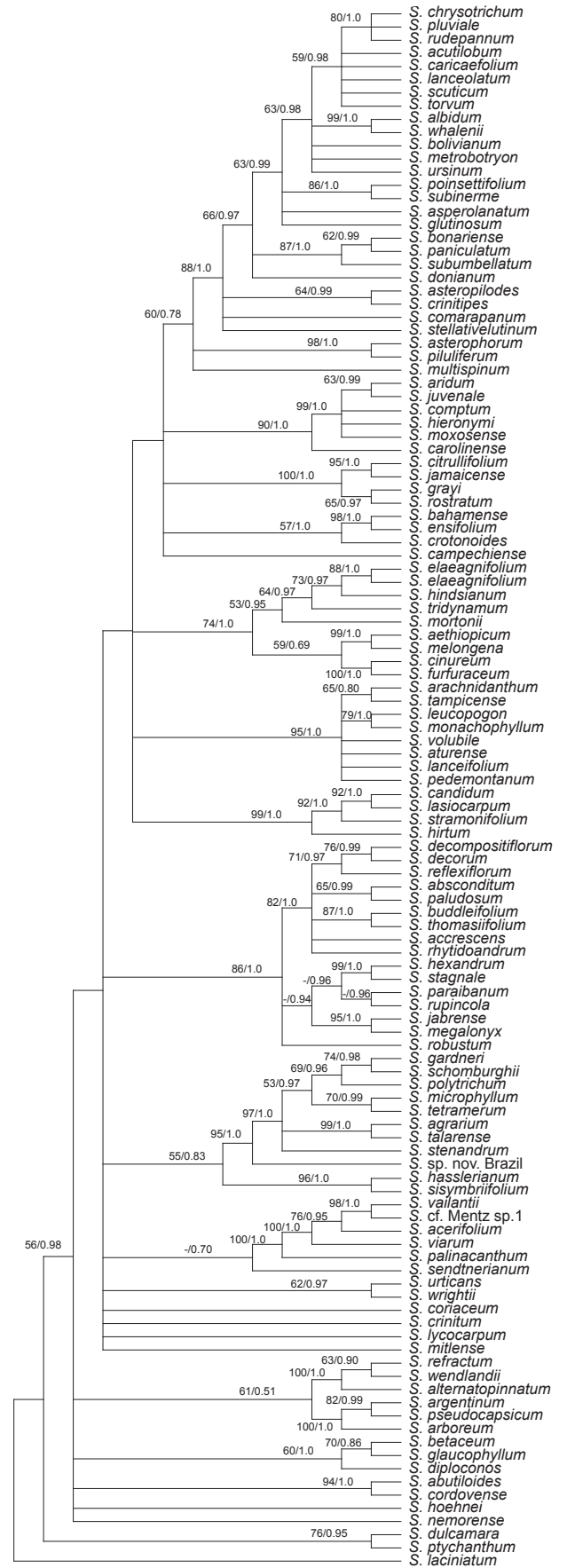


Fig. S1. Strict consensus of 385,577 most parsimonious trees obtained from the *trnT-F* data. Numbers above branches are bootstrap values over 50% followed by posterior probabilities from Bayesian analysis.

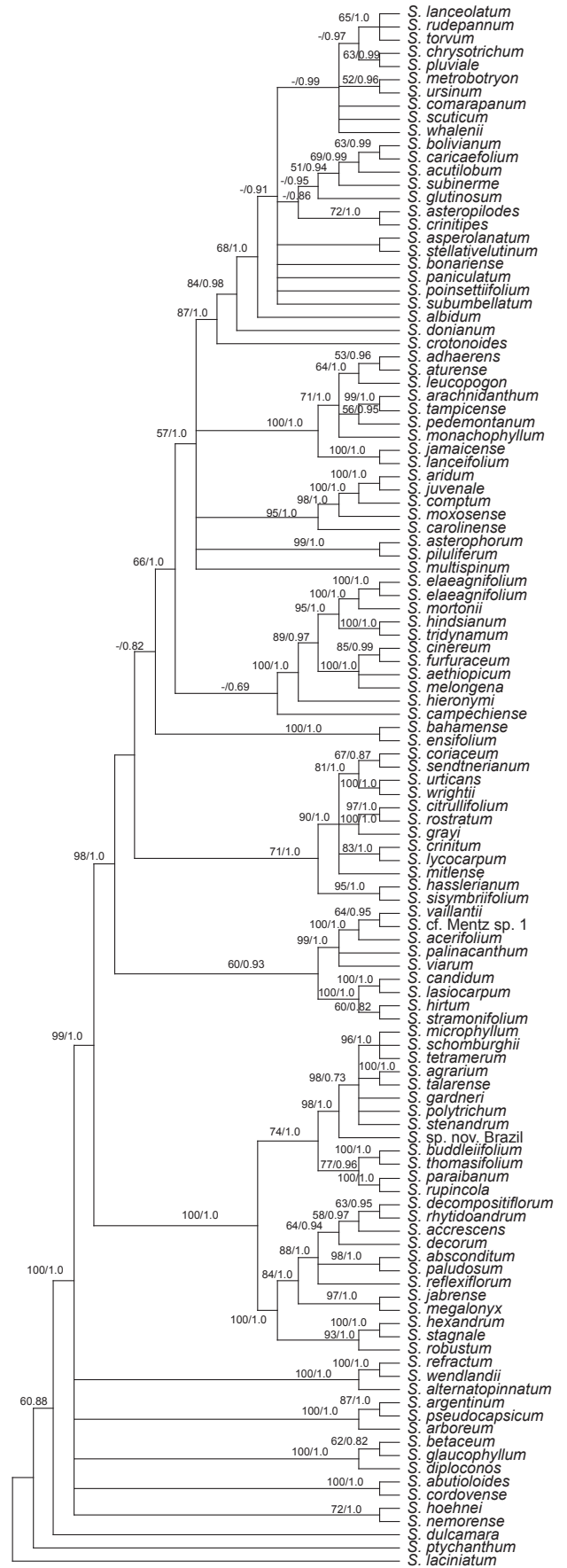


Fig. S2. Strict consensus of 19,579 most parsimonious trees obtained from the *waxy* data. Numbers above branches are bootstrap values over 50% followed by posterior probabilities from Bayesian analysis.

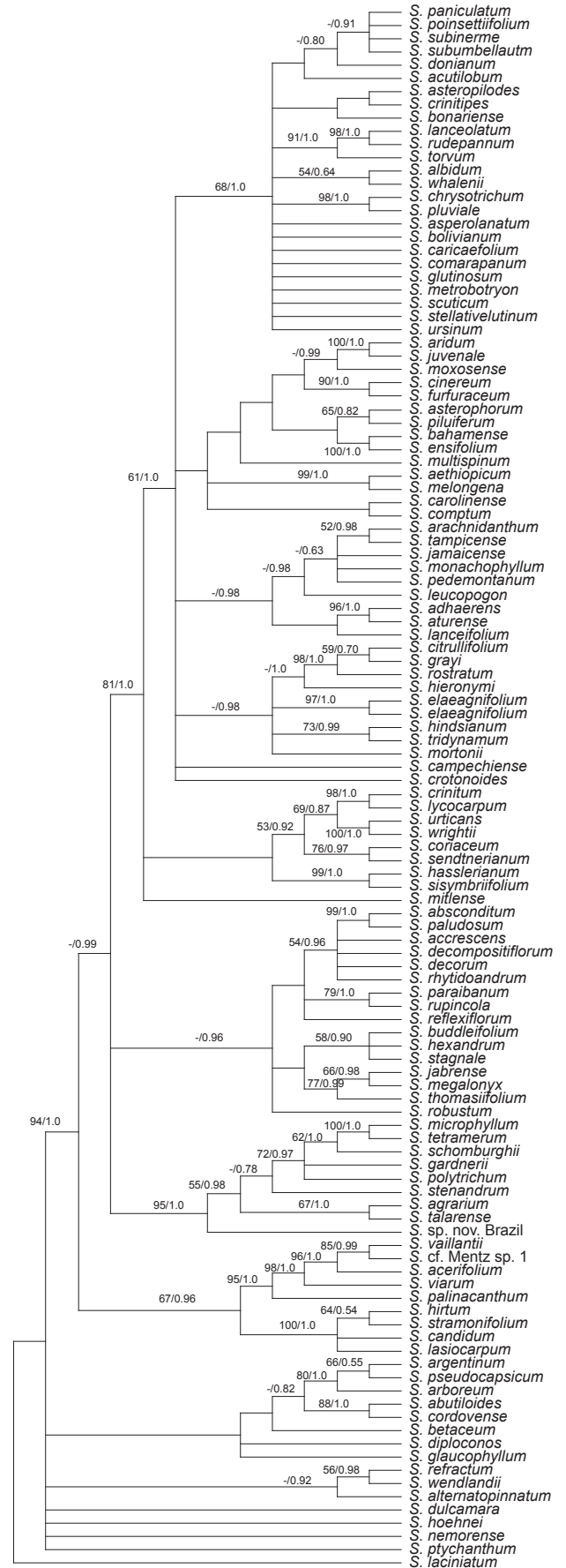


Fig. S3. Strict consensus of 209 most parsimonious trees obtained from the ITS data. Numbers above branches are bootstrap values over 50% followed by posterior probabilities from Bayesian analysis.