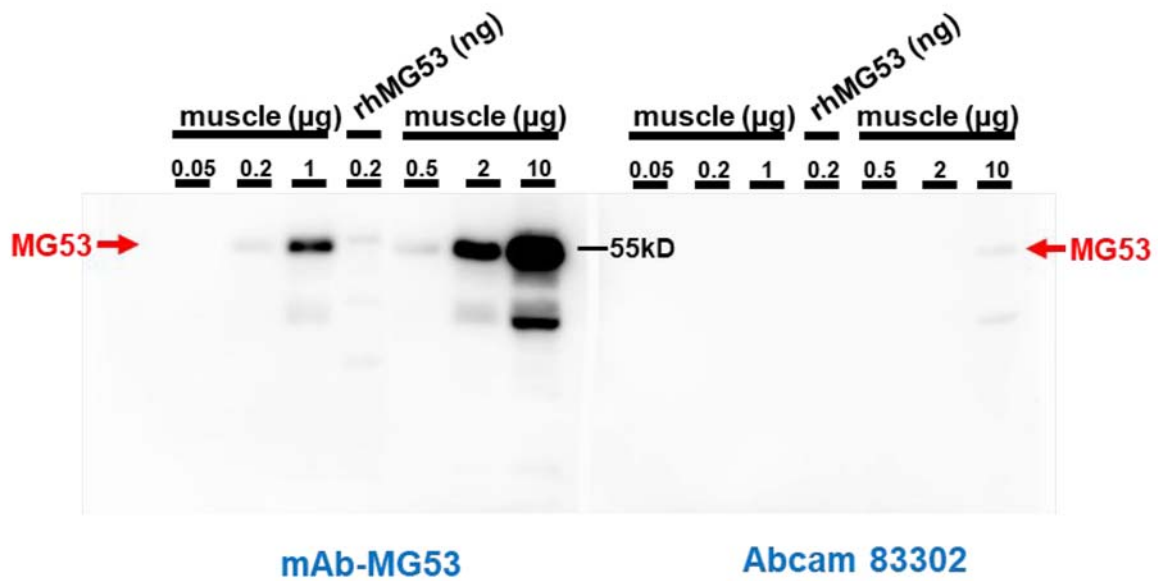


SUPPLEMENTARY DATA

Supplementary Figure 1. Various amounts of skeletal muscle derived from the wild type mice (ranging from 0.05 to 10 μg) were loaded onto a 15-well SDS-PAGE. After transfer to a PVDF membrane, the membrane was cut in the middle. The left half was probed with mAb-MG53 and the right half probed with Abcam 83302 antibodies. Immunoblots were visualized with an ECL plus kit (Pierce Pico). The images were captured using the BioRad ChemiDocTM Imaging System, under identical exposure conditions (60 s exposure). mAb-MG53 can detect MG53 signal with 0.2 μg muscle loading sample, whereas Abcam 83302 antibody only detects MG53 signal in the 10 μg muscle loading sample.



SUPPLEMENTARY DATA

Supplementary Figure 2. Mice sera (1 μ l per lane) derived from three genetic backgrounds were used for WB with mAb-MG53 (*left*) and Abcam 83302 antibody (*right*). Brown – Sv129/C57BL/6; White – Sv129; Black – C57BL/6 (male).

