

Supplemental Figure 4, Verdegaal et al.

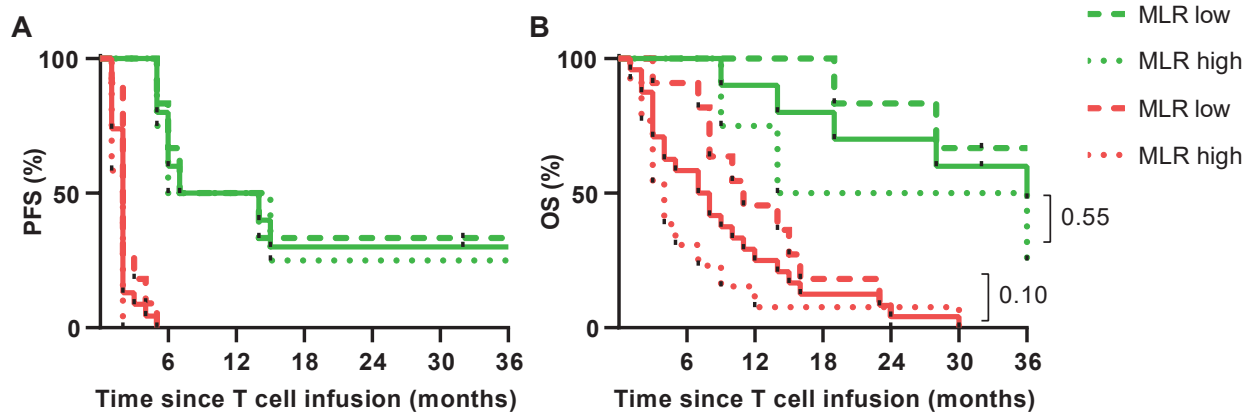


Figure S4. Interaction analysis between clinical response and baseline MLR. The correlation of monocyte to lymphocyte ratio (MLR) with progression free survival (a) and overall survival (b) is shown. Results for all responding patients (defined as having CR, PR or SD > 6 months) are depicted in green solid lines and all non-responding patients in red solid lines. Results for patients with baseline ratio's above median (high) and below median (low) are shown as dotted (...) and dashed (- - -) lines, respectively. N=34.