

Supplemental Figure 7, Verdegaal et al.

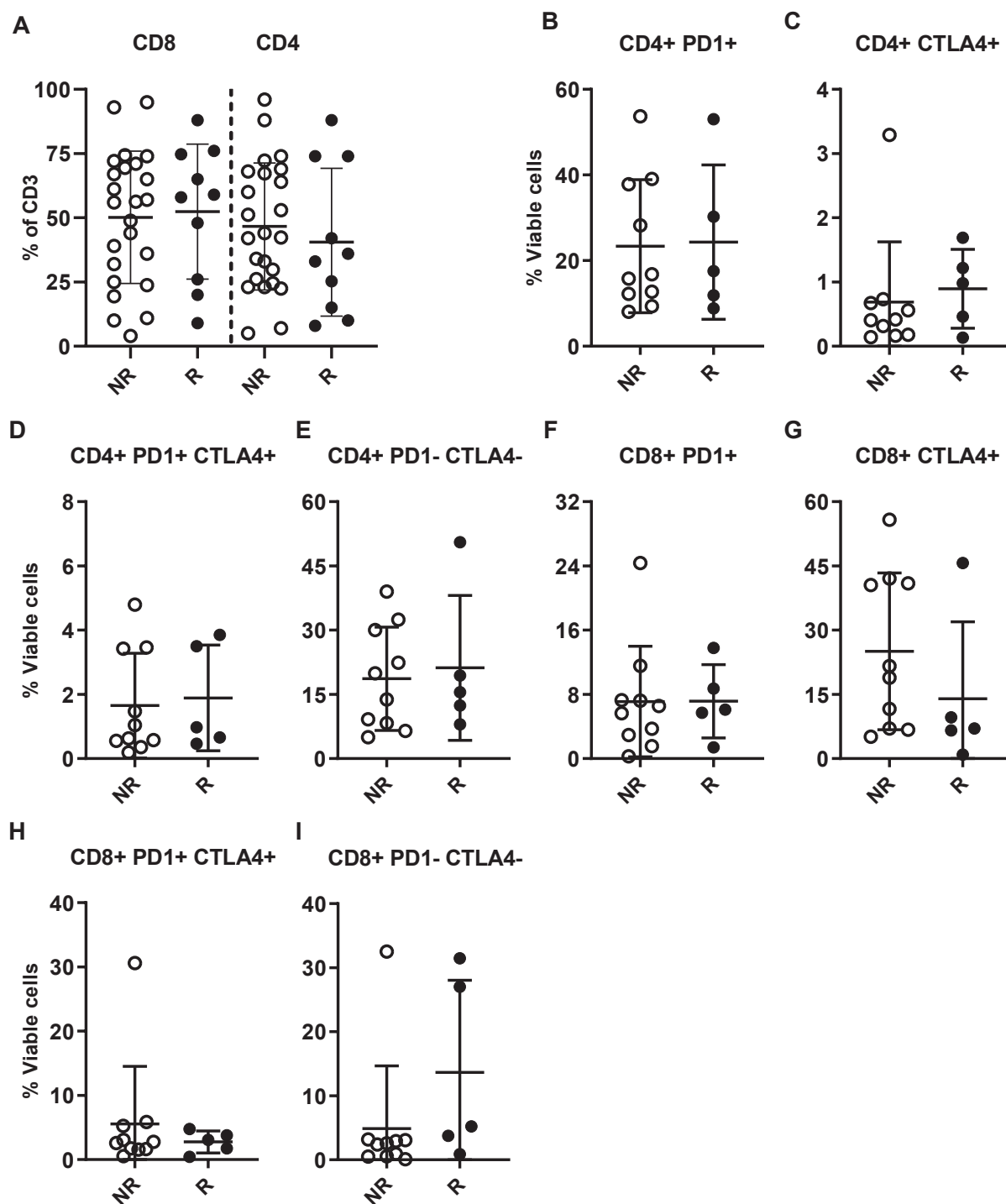


Figure S7: Phenotypical and functional characteristics of the ACT product. The ACT product used for treatment of responding (R, closed circles) and non-responding (NR, open circles) patients was characterized in detail for phenotypical composition by flowcytometry. **a)** The percentages of CD8+ and CD4+ cells are given as fraction of CD3+ T cells (N=34). **b-i)** The expression of checkpoint molecules/activation markers PD1 and CTLA4 was evaluated on the CD4+ and CD8+ T cell populations in the ACT product (N=15). PD1+ (**b,f**), CTLA4+ (**c,g**), PD1+CTLA4+ (**d,h**) and PD1-CTLA4- (**e,i**) CD4+ and CD8+ cells are depicted as percentage of viable cells for R (filled circles) and NR patients (open circles), respectively. Responding patients are defined as having a CR, PR or SD >6 months. Mann-Whitney analysis revealed no significant differences.