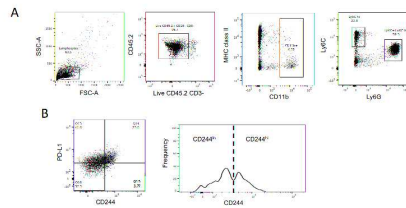
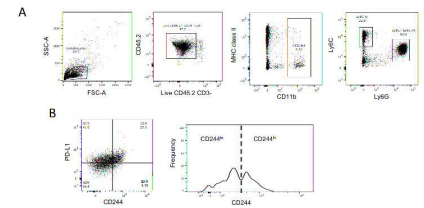


Supplemental Figure 5. (A) MEER tumor cells were injected subcutaneously into the flanks of WT mice. Spleens and tumors were harvested on Day 24 and analyzed by flow cytometry. Cells were first gated on lymphocytes, then sequentially on SSC-H vs SSC-A and FSC-H vs FSC-A to define single cells. Live (viability dye negative) CD45⁺ hematopoietic cells were gated from the single cells. CD11b⁺ cells were gated from live CD45⁺ cells. Ly6C^{hi} CD11b⁺ Mo-MDSC and Ly6G^{hi} Ly6C^{int} CD11b⁺ Gr-MDSC were gated from live CD45⁺ CD11b⁺ cells. **(B)** A histogram of CD244 expression on intratumoral Mo-MDSCs was used to determine the cut point between Mo-MDSCs with low and high CD244 expression.



Supplemental Figure 5. (A) MEER tumor cells were injected subcutaneously into the flanks of WT mice. Spleens and tumors were harvested on Day 24 and analyzed by flow cytometry. Cells were first gated on lymphocytes, then sequentially on SSC-H vs SSC-A and FSC-H vs FSC-A to define single cells. Live (viability dye negative) CD45⁺ hematopoietic cells were gated from the single cells. CD11b⁺ cells were gated from live CD45⁺ cells. Ly6C^{hi} CD11b⁺ Mo-MDSC and Ly6G^{hi} Ly6C^{int} CD11b⁺ Gr-MDSC were gated from live CD45⁺ CD11b⁺ cells. **(B)** A histogram of CD244 expression on intratumoral Mo-MDSCs was used to determine the cut point between Mo-MDSCs with low and high CD244 expression.



Supplemental Figure 5. (A) MEER tumor cells were injected subcutaneously into the flanks of WT mice. Spleens and tumors were harvested on Day 24 and analyzed by flow cytometry. Cells were first gated on lymphocytes, then sequentially on SSC-H vs SSC-A and FSC-H vs FSC-A to define single cells. Live (viability dye negative) CD45⁺ hematopoietic cells were gated from the single cells. CD11b⁺ cells were gated from live CD45⁺ cells. Ly6C^{hi} CD11b⁺ Mo-MDSC and Ly6G^{hi} Ly6C^{int} CD11b⁺ Gr-MDSC were gated from live CD45⁺ CD11b⁺ cells. **(B)** A histogram of CD244 expression on intratumoral Mo-MDSCs was used to determine the cut point between Mo-MDSCs with low and high CD244 expression.