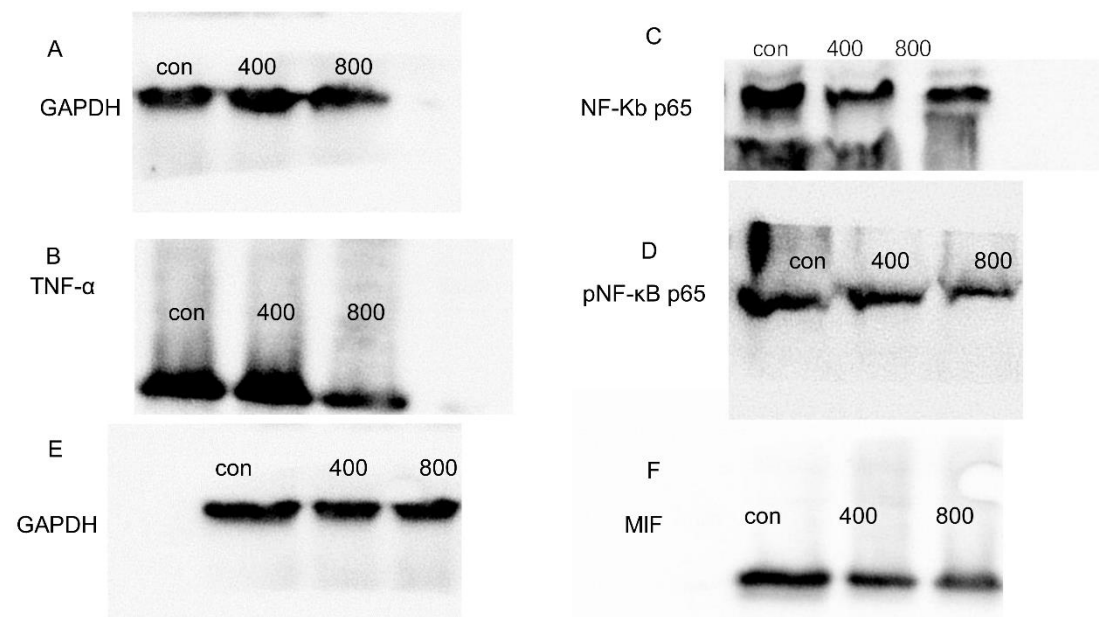


MIF inhibitor, ISO-1, attenuates human pancreatic cancer cell proliferation, migration and invasion *in vitro*, and suppresses xenograft tumour growth *in vivo*

Bo Cheng ^a, Qiaofang Wang ^a, Yaodong Song ^a, Yanna Liu ^a, Yanyan Liu ^a, Shujun Yang ^a, Dejian Li ^a, Yan Zhang ^a, Changju Zhu ^a, *

^a Department of Emergency, the First Affiliated Hospital of Zhengzhou University, Henan 450052, China.

* Corresponding authors: E-mail: zhuchangju98@163.com.



Supplementary Figure1. Full original western blot membranes for membrane strips presented in Figure 5 of the manuscript.