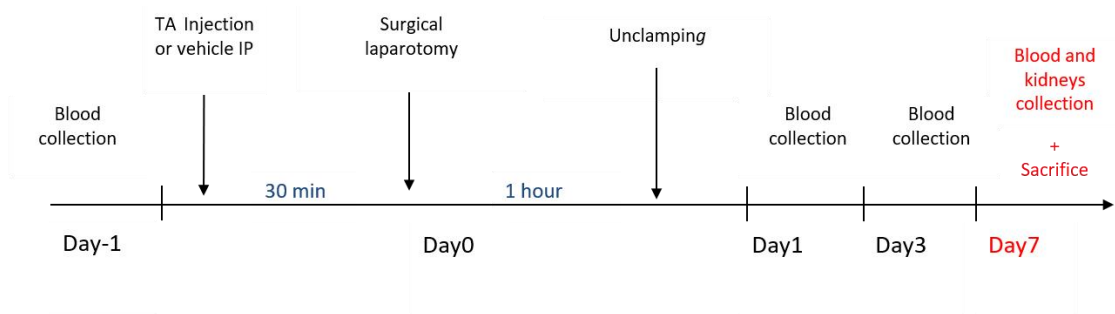
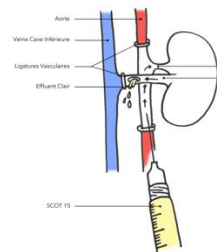


Supplementary Figure S1. Schematic representation of renal bilateral warm ischemia-reperfusion rat model

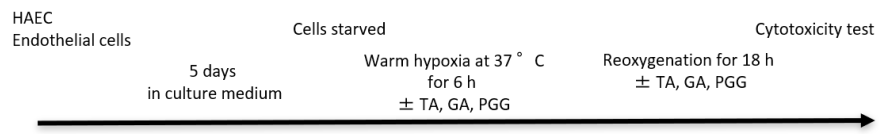


Cold preservation in SCOT15 of kidney graft for 6h

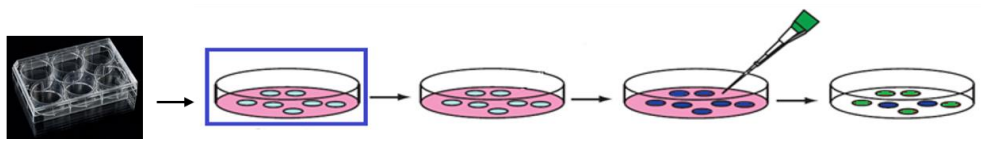
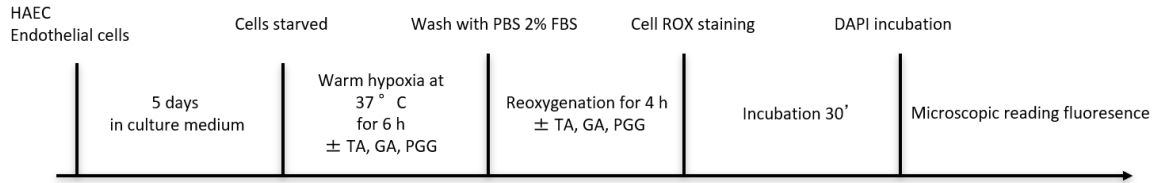


Supplementary Figure S2. Schematic representation of cold ischemia-reperfusion rat model: renal allotransplantation in recipient

Cytotoxicity assay



Cell ROX assay



Supplementary Figure S3. Schematic representation of in vitro cytotoxicity and Cell Rox assays