

## ONLINE SUPPLEMENT

### Cooper AJ et al., Improvements in Sepsis-associated Mortality in Hospitalized Patients with Cancer versus Those without Cancer: A 12-Year Analysis Using Clinical Data

#### Table of Contents

- **Table E1.** Accuracy of AHRQ Cancer Classifications Relative to Medical Record Review
- **Table E2.** Risk-Adjusted Multivariable Model Results for In-Hospital Mortality in Sepsis Patients With and Without Cancer
- **Table E3.** Unadjusted and Adjusted Sepsis-Associated In-Hospital Mortality Rates in Cancer and Non-Cancer Patients by 3-Year Intervals
- **Table E4.** Characteristics of Solid Cancer Patients with Sepsis in 2012-2014 vs 2003-2005
- **Table E5.** Characteristics of Hematologic Cancer Patients with Sepsis in 2012-2014 vs 2003-2005
- **Table E6.** Characteristics of Non-Cancer Patients with Sepsis in 2012-2014 vs 2003-2005
- **Figure E1.** Quantity of Missing Laboratory Values on Day of Sepsis Onset Across All Years and in 2012-2014 vs 2003-2015
- **Figure E2.** Trends in Sepsis-Associated In-Hospital Mortality Rates in Patients Requiring Mechanical Ventilation at Sepsis Onset
- **Figure E3.** Trends in In-Hospital Mortality Rates by Community-Onset or Hospital-Onset Sepsis Among Patients with Cancer
- **Figure E4.** Trends in Proportion of Patients with Sepsis and Cancer who Received Chemotherapy, Targeted Therapy, and Granulocyte Colony-Stimulating Factor
- **Figure E5.** Trends in the Proportion of Patients with Sepsis who Received New Antifungal Agents (Echinocandins and Triazoles)
- **Figure E6.** Trends in Sepsis-Associated Mortality Rates Using In-Hospital Mortality or Discharge to Hospice as Combined Outcome
- **Figure E7.** Trends in Sepsis-Associated Mortality Rates in Cancer and Non-Cancer Patients Using Administrative Definition of Sepsis vs CDC Adult Sepsis Event Definition
- **Appendix E1.** ICD-9-CM Codes from AHRQ Clinical Classifications Software Used to Identify Patients with Solid and Hematologic Cancers
- **Appendix E2.** Medications Used to Indicate Active Cancer Treatment
- **Appendix E3.** ICD-9-CM Codes Used to Determine Site of Infection

**Table E1. Accuracy of AHRQ Cancer Classifications Relative to Medical Record Review**

<b>Cancer Diagnosis Category</b>	<b>Sensitivity [95% CI] (Counts)</b>	<b>Specificity [95% CI] (Counts)</b>	<b>Positive Predictive Value [95% CI] (Counts)</b>
<b>Solid Cancer (Any)</b>	85.2% [72.9%-93.4%] (46/54)	96.6% [92.2-98.9%] (141/146)	90.2% [78.6-96.7%] (46/51)
<b>Metastatic Solid Cancer</b>	84.6% [65.1-95.6%] (22/26)	95.4% [91.1-98.0%] (166/174)	73.3% [54.1-87.7%] (22/30)
<b>Hematologic Cancer</b>	72.2% [54.8%-85.8%] (26/36)	100% [97.8-100%] (164/164)	100% [86.8%-100%] (26/26)
<b>Any Cancer Code</b>	83.0% [73.5-90.1%] (73/88)	96.4% [91.1-99.0%] (108/112)	94.8% [87.2-98.6%] (73/77)

Note: 95% CI's were calculated using exact binomial method. Among the 73 patients with cancer diagnosis codes and confirmed disease in the medical record review validation cohort, cancer was in remission in 16 cases (21.9%).

**Table E2. Risk-Adjusted Multivariable Model Results for In-Hospital Mortality in Sepsis Patients With and Without Cancer**

	Sepsis Patients with Cancer		Sepsis Patients without Cancer	
	OR [95% CI]	p-value	OR [95% CI]	p-value
Age	1.01 [1.00-1.01]]	<0.001	1.03 [1.03-1.03]	<0.001
Male Sex	1.00 [0.89-1.13]	0.990	1.01 [0.92-1.11]	0.786
Race				
White	Referent	-	Referent	-
Black	1.20 [0.95-1.52]	0.129	0.87 [0.74-1.01]	0.069
Other	1.45 [1.21-1.74]	<0.001	1.12 [0.99-1.28]	0.067
Severity-Of-Illness				
Vasopressors (yes/no)	2.58 [2.28-2.91]	<0.001	2.63 [2.36-2.92]	<0.001
Mech. Ventilation (yes/no)	4.37 [3.86-4.94]	<0.001	3.20 [2.90-3.52]	<0.01
Albumin ≤2.5 mg/dL	2.21 [1.95-2.51]	<0.001	1.53 [1.38-1.70]	<0.001
Anion gap ≥16 mEq/L	1.66 [1.41-1.96]	<0.001	1.61 [1.45-1.80]	<0.001
AST ≥100 units/L	1.60 [1.35-1.89]	<0.001	1.39 [1.24-1.56]	<0.001
Creatinine ≥2.0 mg/dL	1.29 [1.10-1.50]	0.002	1.73 [1.56-1.92]	<0.001
Hematocrit ≤27%	0.75 [0.66-0.85]	<0.001	0.90 [0.81-0.99]	0.031
Platelet count ≤100 x 10 <sup>9</sup> /L	1.89 [1.65-2.18]	<0.001	1.60 [1.42-1.80]	<0.001
Sodium ≤130 mEq/L	1.21 [1.05-1.40]	0.009	1.26 [1.11-1.42]	<0.001
Total Bilirubin ≥ 2.0 mg/dL	1.06 [0.91-1.23]	0.463	1.36 [1.20-1.55]	<0.001
WBC >12 x 10 <sup>9</sup> /L	1.06 [0.93-1.21]	0.387	1.10 [0.99-1.22]	0.067
WBC <1x 10 <sup>9</sup> /L	0.75 [0.61-0.83]	0.009	3.05 [2.04-4.56]	<0.001
Hospital-Onset Sepsis	1.84 [1.63-2.08]	<0.001		
Blood Culture Result				
Negative	Referent	-	Referent	-
Gram-Positive Organism	0.96 [0.71-1.30]	0.798	1.16 [0.94-1.43]	0.160
Gram-Negative Organism	0.64 [0.47-0.86]	0.003	0.51 [0.38-0.69]	<0.001
Fungal Organism	2.63 [0.75-9.15]	0.130	2.23 [1.10-4.54]	0.027
Polymicrobial	1.06 [0.75-1.49]	0.757	1.00 [0.69-1.44]	0.993
Time Period				
2003-2005	Referent	-	Referent	-
2006-2008	0.85 [0.73-1.00]	0.049	0.99 [0.87-1.14]	0.930
2009-2011	0.73 [0.62-0.87]	<0.001	1.04 [0.91-1.18]	0.591
2012-2014	0.53 [0.44-0.63]	<0.001	0.91 [0.80-1.04]	0.148

Note: Severity-of-illness indicators and blood culture results were ascertained within a +/-1 day window around the day of sepsis onset (defined as the earliest day within the Adult Sepsis Event window period when there was a blood culture draw or antibiotic administration).

**Table E3. Unadjusted and Adjusted Sepsis-Associated In-Hospital Mortality Rates in Cancer and Non-Cancer Patients by 3-Year Intervals**

Time	Cancer (Any)		Solid Cancer		Hematologic Cancer		No Cancer	
	Deaths/ Cases (%)	Adjusted OR [95% CI]	Deaths/ Cases (%)	Adjusted OR [95% CI]	Deaths/ Cases (%)	Adjusted OR [95% CI]	Deaths/ Cases (%)	Adjusted OR [95% CI]
2003- 2005	571/1,826 (37.3%)	Referent	360/1,103 (32.6%)	Referent	211/723 (29.2%)	Referent	655/3,134 (20.9%)	Referent
2006- 2008	580/1,975 (29.4%)	0.85 [0.73-1.00]	357/1,209 (29.5%)	0.85 [0.70-1.04]	223/766 (29.1%)	0.86 [0.65-1.12]	697/3,352 (20.8%)	0.99 [0.87-1.13]
2009- 2011	517/1,914 (27.0%)	0.73 [0.62-0.86]	304/1,997 (25.4%)	0.67 [0.54-0.82]	213/717 (29.7%)	0.82 [0.63-1.09]	779/3,404 (22.9%)	1.03 [0.91-1.18]
2012- 2014	462/1,774 (26.0%)	0.53 [0.45-0.63]	284/1,114 (25.5%)	0.52 [0.42-0.64]	178/660 (27.0%)	0.54 [0.40-0.73]	828/3,596 (23.0%)	0.90 [0.79-1.03]

Models were adjusted for age, sex, race, and clinical markers of severity-of-illness (worst values within  $\pm 1$  day of sepsis onset). All adjusted odds ratios are relative to 2003-2005.

**Table E4. Characteristics of Solid Cancer Patients with Sepsis in 2012-2014 vs 2003-2005**

Characteristic	Solid Cancer Patients	
	2003-2005 (n=1,103)	2012-2014 (n=1,114)
Median Age (IQR)	63 (54-72)	65 (56-73)
Male Sex	589 (53.4%)	627 (56.3%)
Race		
White	888 (80.5%)	905 (81.2%)
Black	108 (9.8%)	73 (6.6%)
Other	107 (9.7%)	136 (12.2%)
Median Elixhauser Score (IQR)	15 (9-24)	18 (12-25)
Solid Cancer Type		
Breast	98 (8.9%)	58 (5.2%)
Gastrointestinal	307 (27.8%)	314 (28.2%)
Genitourinary	144 (13.1%)	137 (12.3%)
Lung	244 (22.1%)	233 (20.9%)
Other	324 (29.4%)	297 (26.7%)
Solid Tumor Metastases	653 (59.2%)	740 (66.4%)
Severity-Of-Illness (Sepsis Onset)		
Vasopressors (yes/no)	547 (49.6%)	533 (47.9%)
Mech. Ventilation (yes/no)	362 (32.8%)	419 (37.6%)
Albumin $\leq$ 2.5 mg/dL	307 (27.8%)	443 (39.8%)
Anion gap $\geq$ 16 mEq/L	167 (15.1%)	316 (28.4%)
AST $\geq$ 100 units/L	191 (17.3%)	201 (18.0%)
Creatinine $\geq$ 2.0 mg/dL	265 (24.0%)	233 (20.9%)
Hematocrit $\leq$ 27%	400 (36.3%)	573 (51.4%)
Platelet count $\leq$ 100 x 10 <sup>9</sup> /L	246 (22.3%)	282 (25.3%)
Sodium $\leq$ 130 mEq/L	195 (17.7%)	308 (27.7%)
Total Bilirubin $\geq$ 2.0 mg/dL	274 (24.8%)	257 (23.1%)
WBC $<$ 1x 10 <sup>9</sup> /L	48 (4.4%)	38 (3.4%)
WBC $>$ 12x 10 <sup>9</sup> /L	656 (59.5%)	610 (54.8%)
Hospital-Onset Sepsis	426 (38.6%)	384 (34.5%)
Diagnosed Infection		
Bone/Joint	16 (1.5%)	11 (1.0%)
Central Nervous System	20 (1.8%)	14 (1.3%)
Genitourinary	197 (17.9%)	147 (13.2%)
Intra-abdominal	195 (17.7%)	274 (24.6%)
Obstetric/Gynecologic	1 (0.1%)	7 (0.6%)
Other	284 (25.8%)	158 (14.2%)
Pulmonary	434 (39.4%)	475 (42.6%)
Skin/Soft Tissue	61 (5.5%)	42 (3.8%)
Unknown	199 (18.0%)	169 (15.2%)

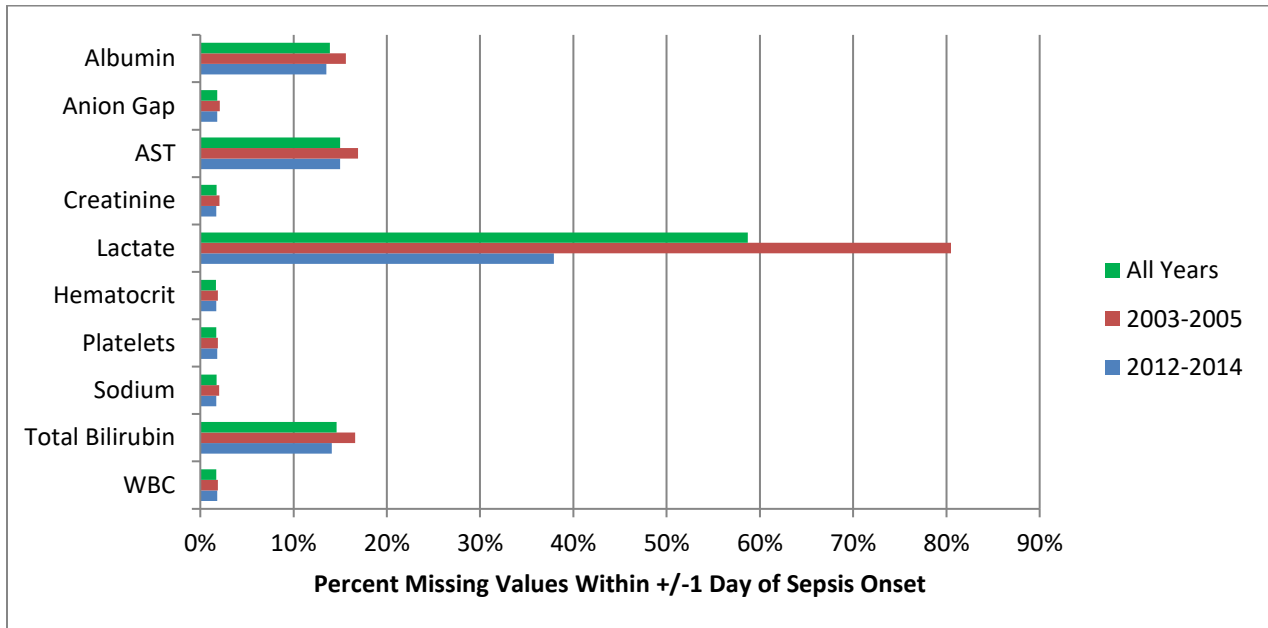
**Table E5. Characteristics of Hematologic Cancer Patients with Sepsis in 2012-2014 vs 2003-2005**

Characteristic	Hematologic Cancer Patients	
	2003-2005 (n=723)	2012-2014 (n=660)
Median Age (IQR)	54 (41-63)	62 (52.5-69)
Male Sex	443 (61.3%)	367 (55.6%)
Race		
White	650 (89.9%)	540 (81.8%)
Black	20 (2.8%)	29 (4.4%)
Other	53 (7.3%)	91 (13.8%)
Median Elixhauser Score (IQR)	11 (4-20)	11 (6-17)
Hematologic Cancer		
Leukemia	425 (58.8%)	370 (56.1%)
Lymphoma	264 (36.5%)	257 (38.9%)
Multiple Myeloma	57 (7.9%)	57 (8.6%)
Stem Cell Transplant	101 (14.0%)	86 (13.0%)
Severity-Of-Illness (Sepsis Onset)		
Vasopressors (yes/no)	237 (32.8%)	278 (42.1%)
Mech. Ventilation (yes/no)	173 (23.9%)	207 (31.4%)
Albumin $\leq$ 2.5 mg/dL	147 (20.3%)	213 (32.3%)
Anion gap $\geq$ 16 mEq/L	72 (10.0%)	148 (22.4%)
AST $\geq$ 100 units/L	97 (13.4%)	106 (16.1%)
Creatinine $\geq$ 2.0 mg/dL	143 (19.8%)	116 (17.6%)
Hematocrit $\leq$ 27%	457 (63.2%)	508 (77.0%)
Platelet count $\leq$ 100 x 10 <sup>9</sup> /L	529 (73.2%)	455 (68.9%)
Sodium $\leq$ 130 mEq/L	107 (14.8%)	155 (23.5%)
Total Bilirubin $\geq$ 2.0 mg/dL	223 (30.8%)	204 (30.9%)
WBC $<$ 1x 10 <sup>9</sup> /L	241 (33.3%)	191 (28.9%)
WBC $>$ 12x 10 <sup>9</sup> /L	220 (30.4%)	190 (28.8%)
Hospital-Onset Sepsis	412 (57.0%)	309 (46.8%)
Diagnosed Infection		
Bone/Joint	6 (0.8%)	7 (1.1%)
Central Nervous System	16 (2.2%)	16 (2.4%)
Genitourinary	76 (10.5%)	55 (8.3%)
Intra-abdominal	103 (14.3%)	101 (15.3%)
Obstetric/Gynecologic	1 (0.1%)	2 (0.3%)
Other	28 (39.8%)	139 (21.1%)
Pulmonary	276 (38.2%)	265 (40.2%)
Skin/Soft Tissue	58 (8.0%)	38 (5.8%)
Unknown	128 (17.7%)	135 (20.5%)

**Table E6. Characteristics of Non-Cancer Patients with Sepsis in 2012-2014 vs 2003-2005**

Characteristic	Patients Without Cancer	
	2003-2005 (n=3,134)	2012-2014 (n=3,596)
Median Age (IQR)	63 (50-75)	62 (49-73)
Male Sex	1,735 (55.4%)	1,925 (53.5%)
Race		
White	2,308 (73.6%)	2,620 (72.9%)
Black	387 (12.4%)	413 (11.5%)
Other	439 (14.0%)	563 (15.7%)
Median Elixhauser Score (IQR)	10 (3-17)	10 (3-16)
Severity-Of-Illness (Sepsis Onset)		
Vasopressors (yes/no)	1,783 (56.9%)	2,109 (58.7%)
Mech. Ventilation (yes/no)	1,320 (42.1%)	1,946 (54.1%)
Albumin $\leq$ 2.5 mg/dL	626 (20.0%)	1,083 (30.1%)
Anion gap $\geq$ 16 mEq/L	638 (20.4%)	1,193 (33.2%)
AST $\geq$ 100 units/L	557 (17.8%)	763 (21.2%)
Creatinine $\geq$ 2.0 mg/dL	1,061 (33.9%)	992 (27.6%)
Hematocrit $\leq$ 27%	1,000 (31.9%)	1,424 (39.6%)
Platelet count $\leq$ 100 x 10 <sup>9</sup> /L	602 (19.2%)	854 (23.8%)
Sodium $\leq$ 130 mEq/L	432 (13.8%)	703 (19.6%)
Total Bilirubin $\geq$ 2.0 mg/dL	537 (17.1%)	618 (17.2%)
WBC $<$ 1x 10 <sup>9</sup> /L	14 (0.5%)	62 (1.7%)
WBC $>$ 12x 10 <sup>9</sup> /L	2,123 (67.7%)	2,282 (63.5%)
Hospital-Onset Sepsis	1,057 (33.7%)	1,081 (30.1%)
Diagnosed Infection		
Bone/Joint	118 (3.8%)	118 (3.3%)
Central Nervous System	64 (2.0%)	113 (3.1%)
Genitourinary	620 (19.8%)	624 (17.4%)
Intra-abdominal	409 (13.1%)	495 (13.8%)
Obstetric/Gynecologic	26 (0.8%)	22 (0.6%)
Other	952 (30.4%)	662 (18.4%)
Pulmonary	1,371 (43.8%)	1,720 (47.8%)
Skin/Soft Tissue	193 (6.2%)	224 (6.2%)
Unknown	516 (16.5%)	532 (14.8%)

**Figure E1. Quantity of Missing Laboratory Values on Day of Sepsis Onset Across All Years and in 2012-2014 vs 2003-2015**

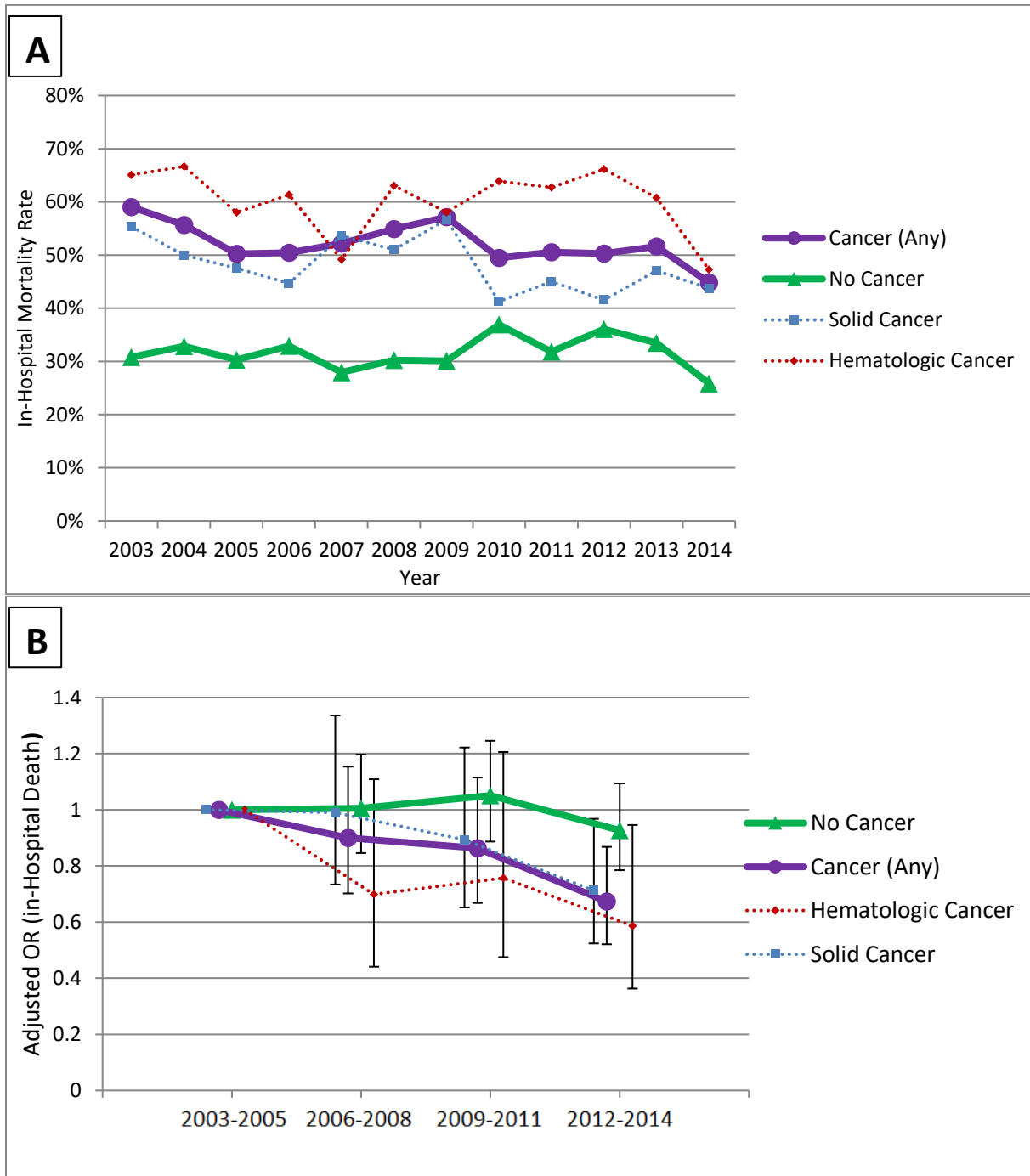


Note: the only variable with clinically significant changes in testing rates over time was lactate (higher in 2012-2014 vs 2003-2005). For this reason, lactate was not included in the CDC surveillance definition or as a covariate for severity-of-illness adjustment in the multivariate models.



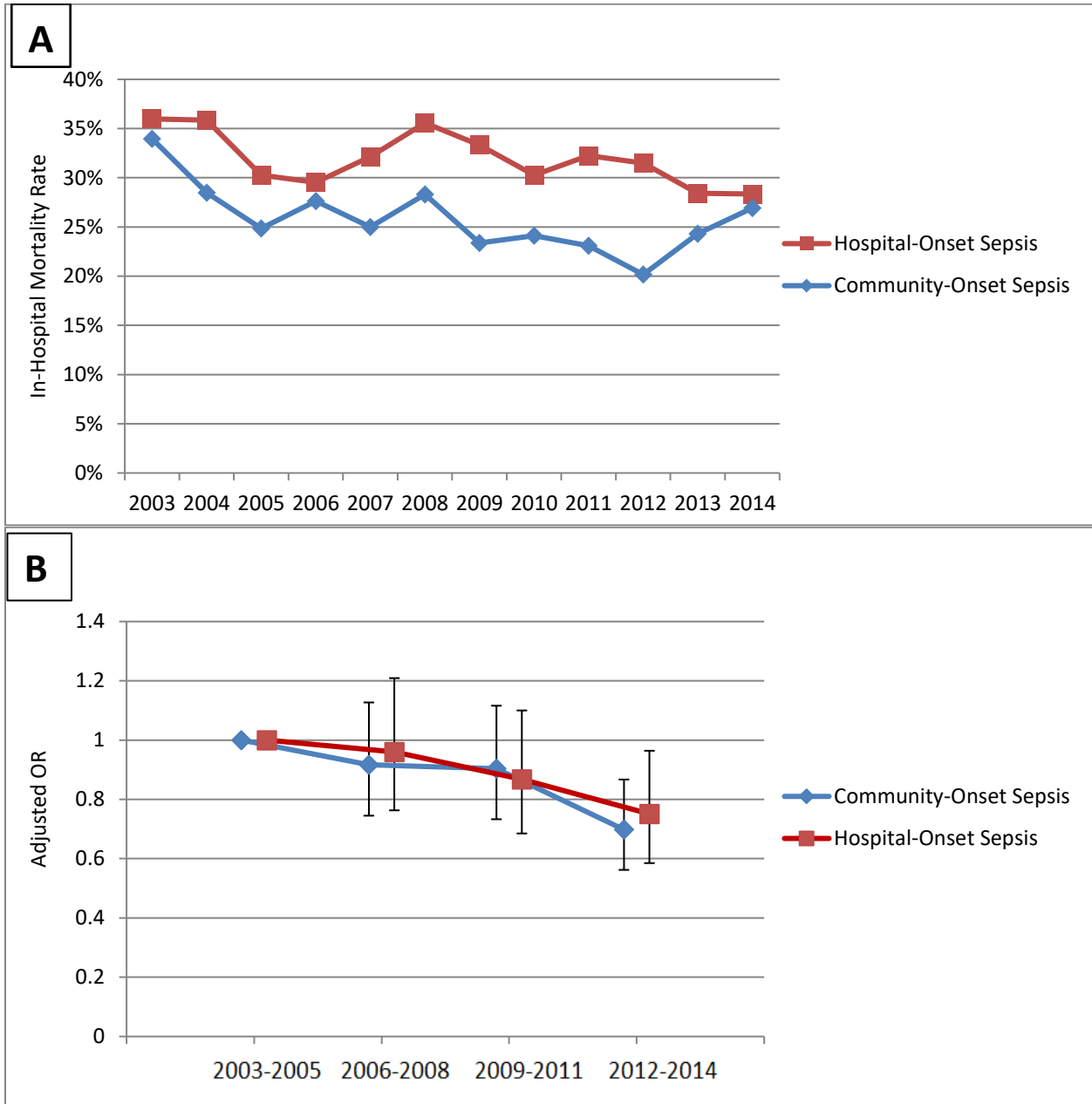
**Figure E2. Trends in Sepsis-Associated In-Hospital Mortality Rates in Cancer and Non-Cancer Patients Requiring Mechanical Ventilation at Sepsis Onset**

Figure A shows unadjusted annual mortality trends, while Figure B shows 3-year interval adjusted mortality rates.



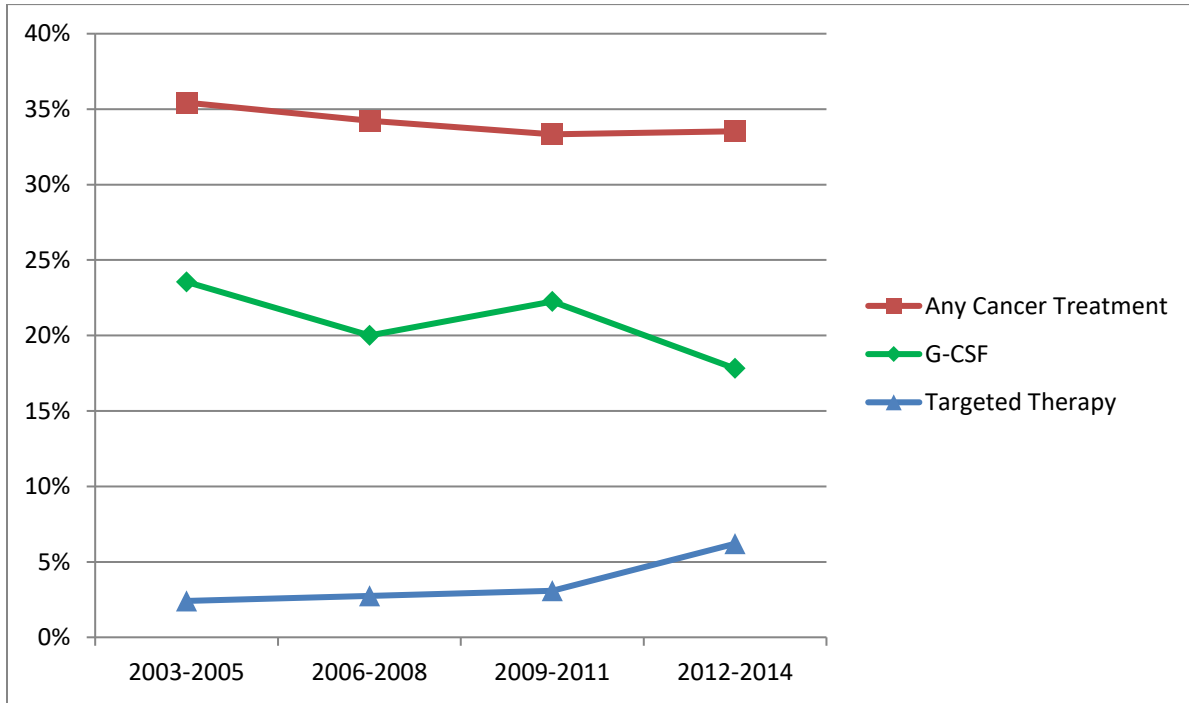
**Figure E3. Trends in In-Hospital Mortality Rates by Community-Onset or Hospital-Onset Sepsis in Patients with Cancer**

Figure A shows unadjusted annual mortality trends, while Figure B shows 3-year interval adjusted mortality rates.

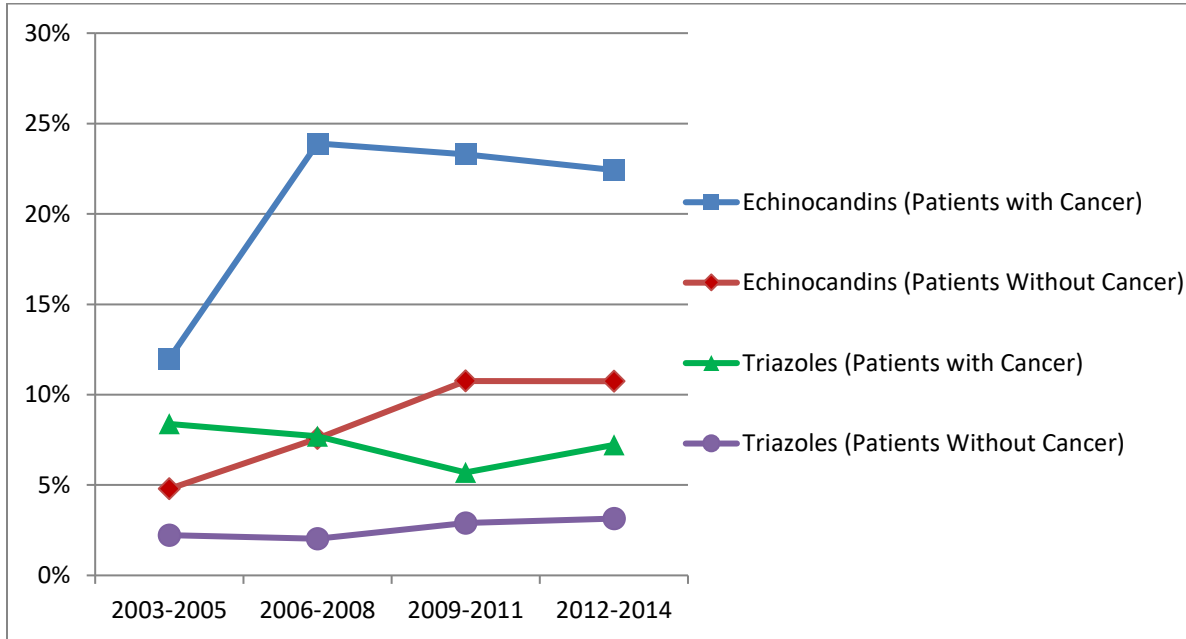


**Figure E4. Trends in Proportion of Patients with Sepsis and Cancer who Received Chemotherapy, Targeted Therapy, and Granulocyte Colony-Stimulating Factor**

Medications used to define cancer treatment and targeted therapies are shown in Supplemental Appendix 2. Any cancer treatment, G-CSF, or targeted therapy administered during the sepsis hospitalization or within the preceding 90 days was included.

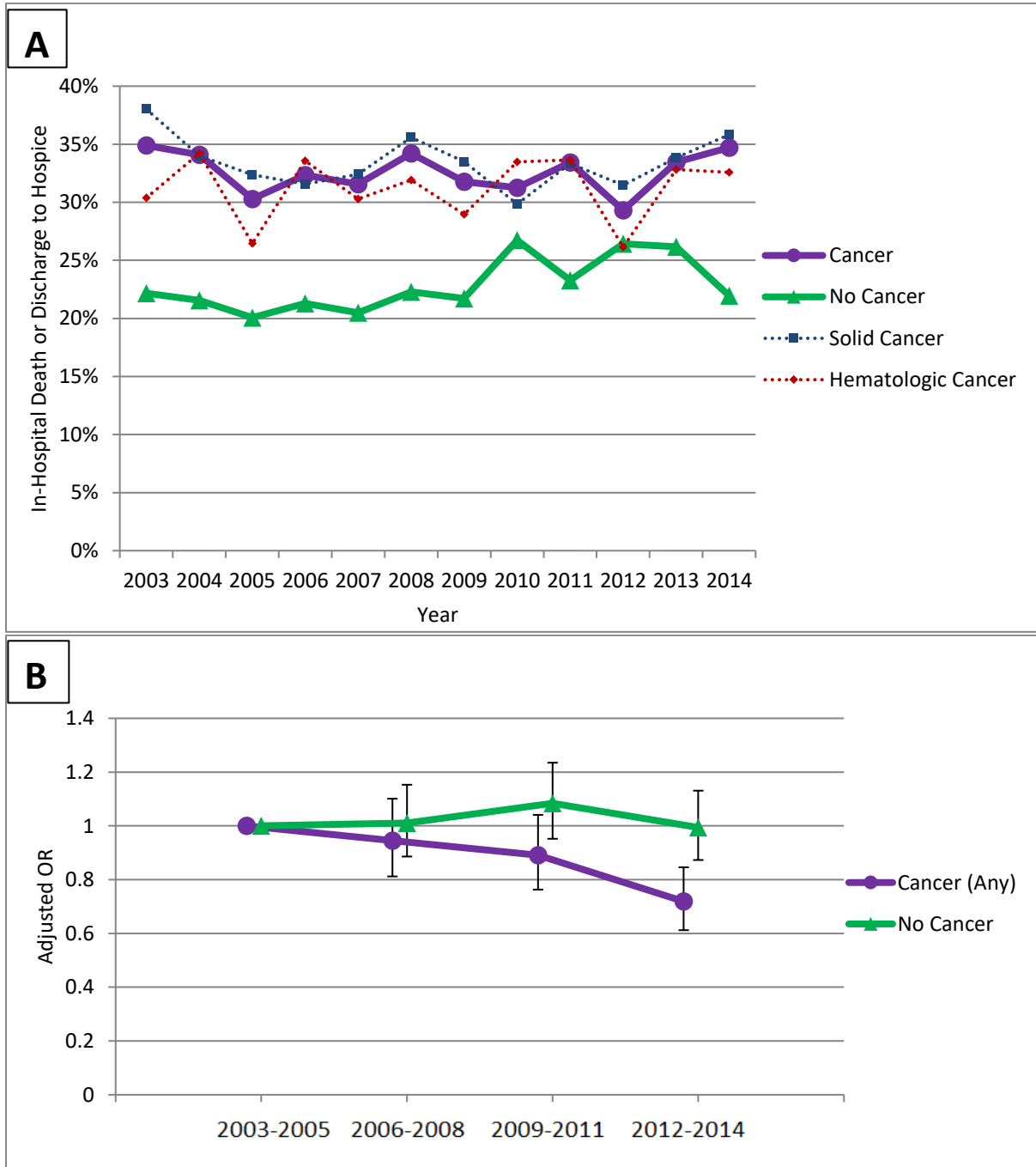


**Figure E5. Trends in the Proportion of Patients with Sepsis who Received New Antifungal Agents (Echinocandins and Triazoles)**



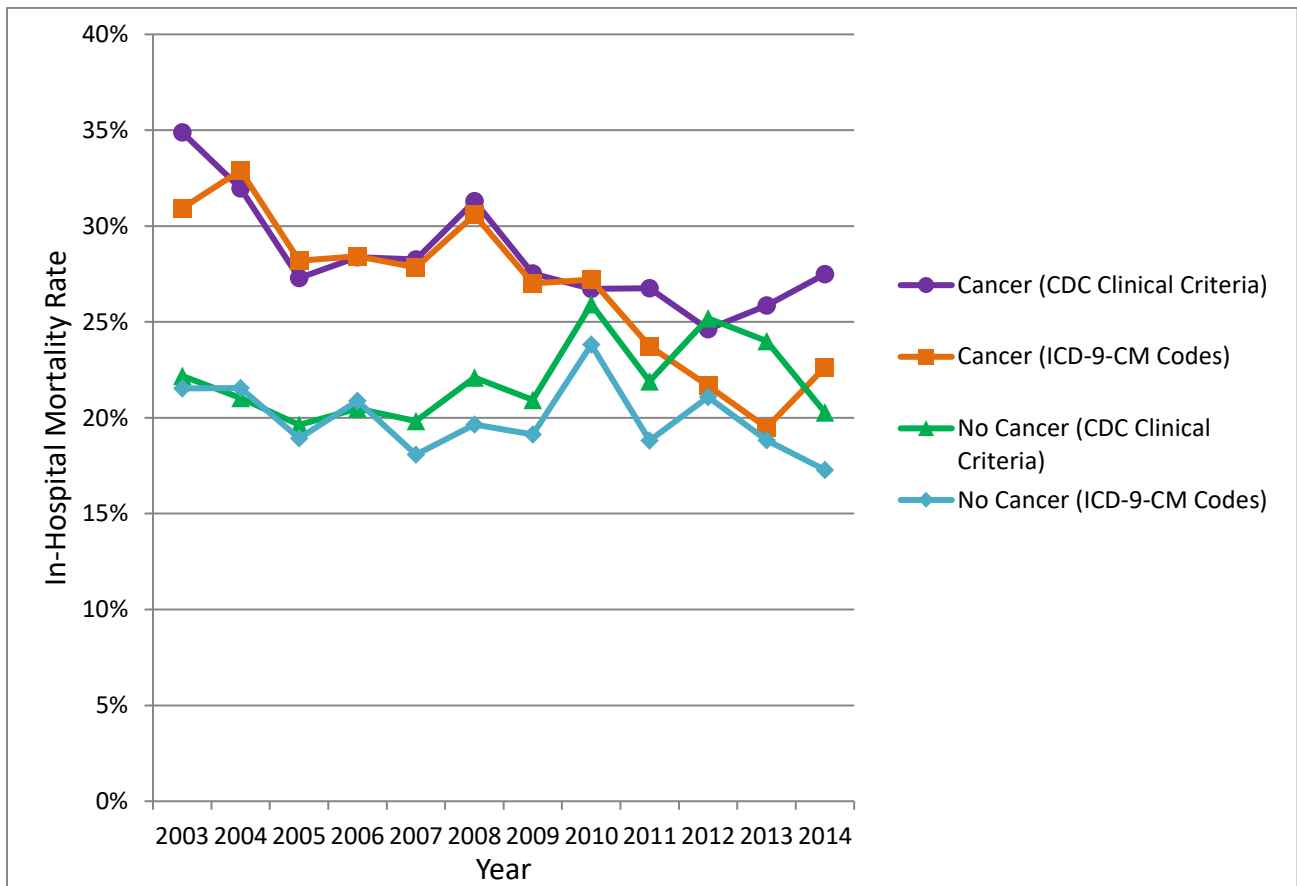
**Figure E6. Trends in Sepsis-Associated Mortality Rates in Cancer and Non-Cancer Patients Using In-Hospital Mortality or Discharge to Hospice as Combined Outcome**

The trends displayed use the primary CDC Adult Sepsis Event definition. Figure A shows unadjusted trends, while Figure B shows 3-year interval adjusted mortality rates.



**Figure E7. Trends in Sepsis-Associated Mortality Rates in Cancer and Non-Cancer Patients Using Administrative Definition of Sepsis vs CDC Adult Sepsis Event Definition**

The trends displayed use the Angus sepsis criteria (ICD-9-CM codes for infection and organ dysfunction, or explicit severe sepsis or septic shock codes) versus the primary CDC Adult Sepsis Event definition for in-hospital mortality rates. The administrative definition identified 20,637 patients with sepsis: 7,950 with cancer (4,804 solid and 3,146 hematologic) and 12,687 without cancer. Adjusted rates were not calculated as the administrative sepsis definition does not identify the timing of sepsis onset.



## Appendix E1. ICD-9-CM Codes from AHRQ Clinical Classifications Software Used to Identify Patients with Solid and Hematologic Cancers

The AHRQ Clinical Classifications includes 35 separate tumor types (codes shown below). We combined several tumor types into 5 solid tumor categories (as per Gupta A, et al. *J Natl Compr Canc Netw* 2018, 16(3):286-292) and 3 hematologic malignancy categories.

### Solid Cancer:

- Breast cancer
- Lung: lung and other respiratory tract cancers
- Gastrointestinal: colon, rectal, anal, stomach, esophageal, pancreatic, liver, and peritoneal cancers
- Genitourinary: bladder, renal, and other urinary cancers; prostate, testicular, and other male genital cancers.
- Other: Gynecologic: cervical, uterine, ovarian, and other female genital cancers; melanoma and other non-epithelial cancers; and other primary, unspecified, and bone/connective tissue cancers

### Hematologic Cancer:

- Lymphoma: Hodgkin's and Non-Hodgkin's lymphomas
- Leukemias
- Multiple Myeloma

The presence of stem cell transplants in patients with hematological malignancies was determined by codes V42.81 and V42.82.

The presence of solid tumor metastases was identified by ICD-9-CM codes (Gupta A, et al. *J Natl Compr Canc Netw* 2018, 16(3):286-292), as below:

ICD-9-CM CODE	SPECIFIC DIAGNOSIS
196	Secondary and unspecified malignant neoplasm of lymph nodes of head face and neck
196.1	Secondary and unspecified malignant neoplasm of intrathoracic lymph nodes
196.2	Secondary and unspecified malignant neoplasm of intra-abdominal lymph nodes
196.3	Secondary and unspecified malignant neoplasm of lymph nodes of axilla and upper limb
196.5	Secondary and unspecified malignant neoplasm of lymph nodes of inguinal region and lower limb
196.6	Secondary and unspecified malignant neoplasm of intrapelvic lymph nodes
196.8	Secondary and unspecified malignant neoplasm of lymph nodes of multiple sites
196.9	Secondary and unspecified malignant neoplasm of lymph nodes site unspecified
197	Secondary malignant neoplasm of lung
197.1	Secondary malignant neoplasm of mediastinum
197.2	Secondary malignant neoplasm of pleura

197.3	Secondary malignant neoplasm of other respiratory organs
197.4	Secondary malignant neoplasm of small intestine including duodenum
197.5	Secondary malignant neoplasm of large intestine and rectum
197.6	Secondary malignant neoplasm of retroperitoneum and peritoneum
197.7	Malignant neoplasm of liver secondary
197.8	Secondary malignant neoplasm of other digestive organs and spleen
198	Secondary malignant neoplasm of kidney
198.1	Secondary malignant neoplasm of other urinary organs
198.2	Secondary malignant neoplasm of skin
198.3	Secondary malignant neoplasm of brain and spinal cord
198.4	Secondary malignant neoplasm of other parts of nervous system
198.5	Secondary malignant neoplasm of bone and bone marrow
198.6	Secondary malignant neoplasm of ovary
198.7	Secondary malignant neoplasm of adrenal gland
198.81	Secondary malignant neoplasm of breast
198.82	Secondary malignant neoplasm of genital organs
198.89	Secondary malignant neoplasm of other specified sites
199	Disseminated malignant neoplasm
199.1	Other malignant neoplasm of unspecified site
209.7	Secondary neuroendocrine tumor
789.51	Malignant ascites

## A. Solid Cancer Codes

ICD-9-CM CODE	CATEGORY	SPECIFIC DIAGNOSIS
'1400 '	'Hd/nck cancer'	MAL NEO UPPER VERMILION
'1401 '	'Hd/nck cancer'	MAL NEO LOWER VERMILION
'1403 '	'Hd/nck cancer'	MAL NEO UPPER LIP- INNER
'1404 '	'Hd/nck cancer'	MAL NEO LOWER LIP- INNER
'1405 '	'Hd/nck cancer'	MAL NEO LIP- INNER NOS
'1406 '	'Hd/nck cancer'	MAL NEO LIP- COMMISSURE
'1408 '	'Hd/nck cancer'	MAL NEO LIP NEC
'1409 '	'Hd/nck cancer'	MAL NEO LIP/VERMIL NOS
'1410 '	'Hd/nck cancer'	MAL NEO TONGUE BASE
'1411 '	'Hd/nck cancer'	MAL NEO DORSAL TONGUE
'1412 '	'Hd/nck cancer'	MAL NEO TIP/LAT TONGUE
'1413 '	'Hd/nck cancer'	MAL NEO VENTRAL TONGUE
'1414 '	'Hd/nck cancer'	MAL NEO ANT 2/3 TONGUE
'1415 '	'Hd/nck cancer'	MAL NEO TONGUE JUNCTION
'1416 '	'Hd/nck cancer'	MAL NEO LINGUAL TONSIL
'1418 '	'Hd/nck cancer'	MALIG NEO TONGUE NEC
'1419 '	'Hd/nck cancer'	MALIG NEO TONGUE NOS



'1420 '	'Hd/nck cancer'	MALIG NEO PAROTID
'1421 '	'Hd/nck cancer'	MALIG NEO SUBMANDIBULAR
'1422 '	'Hd/nck cancer'	MALIG NEO SUBLINGUAL
'1428 '	'Hd/nck cancer'	MAL NEO MAJ SALIVARY NEC
'1429 '	'Hd/nck cancer'	MAL NEO SALIVARY NOS
'1430 '	'Hd/nck cancer'	MALIG NEO UPPER GUM
'1431 '	'Hd/nck cancer'	MALIG NEO LOWER GUM
'1438 '	'Hd/nck cancer'	MALIG NEO GUM NEC
'1439 '	'Hd/nck cancer'	MALIG NEO GUM NOS
'1440 '	'Hd/nck cancer'	MAL NEO ANT FLOOR MOUTH
'1441 '	'Hd/nck cancer'	MAL NEO LAT FLOOR MOUTH
'1448 '	'Hd/nck cancer'	MAL NEO MOUTH FLOOR NEC
'1449 '	'Hd/nck cancer'	MAL NEO MOUTH FLOOR NOS
'1450 '	'Hd/nck cancer'	MAL NEO CHEEK MUCOSA
'1451 '	'Hd/nck cancer'	MAL NEO MOUTH VESTIBULE
'1452 '	'Hd/nck cancer'	MALIG NEO HARD PALATE
'1453 '	'Hd/nck cancer'	MALIG NEO SOFT PALATE
'1454 '	'Hd/nck cancer'	MALIGNANT NEOPLASM UVULA
'1455 '	'Hd/nck cancer'	MALIGNANT NEO PALATE NOS
'1456 '	'Hd/nck cancer'	MALIG NEO RETROMOLAR
'1458 '	'Hd/nck cancer'	MALIG NEOPLASM MOUTH NEC
'1459 '	'Hd/nck cancer'	MALIG NEOPLASM MOUTH NOS
'1460 '	'Hd/nck cancer'	MALIGNANT NEOPL TONSIL
'1461 '	'Hd/nck cancer'	MAL NEO TONSILLAR FOSSA
'1462 '	'Hd/nck cancer'	MAL NEO TONSIL PILLARS
'1463 '	'Hd/nck cancer'	MALIGN NEOPL VALLECULA
'1464 '	'Hd/nck cancer'	MAL NEO ANT EPIGLOTTIS
'1465 '	'Hd/nck cancer'	MAL NEO EPIGLOTTIS JUNCT
'1466 '	'Hd/nck cancer'	MAL NEO LAT OROPHARYNX
'1467 '	'Hd/nck cancer'	MAL NEO POST OROPHARYNX
'1468 '	'Hd/nck cancer'	MAL NEO OROPHARYNX NEC
'1469 '	'Hd/nck cancer'	MALIG NEO OROPHARYNX NOS
'1470 '	'Hd/nck cancer'	MAL NEO SUPER NASOPHARYN
'1471 '	'Hd/nck cancer'	MAL NEO POST NASOPHARYNX
'1472 '	'Hd/nck cancer'	MAL NEO LAT NASOPHARYNX
'1473 '	'Hd/nck cancer'	MAL NEO ANT NASOPHARYNX
'1478 '	'Hd/nck cancer'	MAL NEO NASOPHARYNX NEC
'1479 '	'Hd/nck cancer'	MAL NEO NASOPHARYNX NOS
'1480 '	'Hd/nck cancer'	MAL NEO POSTCRICOID
'1481 '	'Hd/nck cancer'	MAL NEO PYRIFORM SINUS
'1482 '	'Hd/nck cancer'	MAL NEO ARYEPIGLOTT FOLD
'1483 '	'Hd/nck cancer'	MAL NEO POST HYPOPHARYNX
'1488 '	'Hd/nck cancer'	MAL NEO HYPOPHARYNX NEC
'1489 '	'Hd/nck cancer'	MAL NEO HYPOPHARYNX NOS

'1490 '	'Hd/nck cancer'	MAL NEO PHARYNX NOS
'1491 '	'Hd/nck cancer'	MAL NEO WALDEYER-S RING
'1498 '	'Hd/nck cancer'	MAL NEO ORAL/PHARYNX NEC
'1499 '	'Hd/nck cancer'	MAL NEO OROPHRYN ILL-DEF
'1600 '	'Hd/nck cancer'	MAL NEO NASAL CAVITIES
'1601 '	'Hd/nck cancer'	MALIG NEO MIDDLE EAR
'1602 '	'Hd/nck cancer'	MAL NEO MAXILLARY SINUS
'1603 '	'Hd/nck cancer'	MAL NEO ETHMOIDAL SINUS
'1604 '	'Hd/nck cancer'	MALIG NEO FRONTAL SINUS
'1605 '	'Hd/nck cancer'	MAL NEO SPHENOID SINUS
'1608 '	'Hd/nck cancer'	MAL NEO ACCESS SINUS NEC
'1609 '	'Hd/nck cancer'	MAL NEO ACCESS SINUS NOS
'1610 '	'Hd/nck cancer'	MALIGNANT NEO GLOTTIS
'1611 '	'Hd/nck cancer'	MALIG NEO SUPRAGLOTTIS
'1612 '	'Hd/nck cancer'	MALIG NEO SUBGLOTTIS
'1613 '	'Hd/nck cancer'	MAL NEO CARTILAGE LARYNX
'1618 '	'Hd/nck cancer'	MALIGNANT NEO LARYNX NEC
'1619 '	'Hd/nck cancer'	MALIGNANT NEO LARYNX NOS
'1950 '	'Hd/nck cancer'	MAL NEO HEAD/FACE/NECK
'2300 '	'Hd/nck cancer'	CA IN SITU ORAL CAV/PHAR
'2310 '	'Hd/nck cancer'	CA IN SITU LARYNX
'V1001'	'Hd/nck cancer'	HX OF TONGUE MALIGNANCY
'V1002'	'Hd/nck cancer'	HX-ORAL/PHARYNX MALG NEC
'V1021'	'Hd/nck cancer'	HX-LARYNGEAL MALIGNANCY
'1500 '	'Esoph cancer'	MAL NEO CERVICAL ESOPHAG
'1501 '	'Esoph cancer'	MAL NEO THORACIC ESOPHAG
'1502 '	'Esoph cancer'	MAL NEO ABDOMIN ESOPHAG
'1503 '	'Esoph cancer'	MAL NEO UPPER 3RD ESOPH
'1504 '	'Esoph cancer'	MAL NEO MIDDLE 3RD ESOPH
'1505 '	'Esoph cancer'	MAL NEO LOWER 3RD ESOPH
'1508 '	'Esoph cancer'	MAL NEO ESOPHAGUS NEC
'1509 '	'Esoph cancer'	MAL NEO ESOPHAGUS NOS
'2301 '	'Esoph cancer'	CA IN SITU ESOPHAGUS
'V1003'	'Esoph cancer'	HX-ESOPHAGEAL MALIGNANCY
'1510 '	'Stomch cancer'	MAL NEO STOMACH CARDIA
'1511 '	'Stomch cancer'	MALIGNANT NEO PYLORUS
'1512 '	'Stomch cancer'	MAL NEO PYLORIC ANTRUM
'1513 '	'Stomch cancer'	MAL NEO STOMACH FUNDUS
'1514 '	'Stomch cancer'	MAL NEO STOMACH BODY
'1515 '	'Stomch cancer'	MAL NEO STOM LESSER CURV
'1516 '	'Stomch cancer'	MAL NEO STOM GREAT CURV
'1518 '	'Stomch cancer'	MALIG NEOPL STOMACH NEC
'1519 '	'Stomch cancer'	MALIG NEOPL STOMACH NOS
'2302 '	'Stomch cancer'	CA IN SITU STOMACH

'V1004'	'Stomch cancer'	HX OF GASTRIC MALIGNANCY
'1530 '	'Colon cancer'	MAL NEO HEPATIC FLEXURE
'1531 '	'Colon cancer'	MAL NEO TRANSVERSE COLON
'1532 '	'Colon cancer'	MAL NEO DESCEND COLON
'1533 '	'Colon cancer'	MAL NEO SIGMOID COLON
'1534 '	'Colon cancer'	MALIGNANT NEOPLASM CECUM
'1535 '	'Colon cancer'	MALIGNANT NEO APPENDIX
'1536 '	'Colon cancer'	MALIG NEO ASCEND COLON
'1537 '	'Colon cancer'	MAL NEO SPLENIC FLEXURE
'1538 '	'Colon cancer'	MALIGNANT NEO COLON NEC
'1539 '	'Colon cancer'	MALIGNANT NEO COLON NOS
'1590 '	'Colon cancer'	MALIG NEO INTESTINE NOS
'2303 '	'Colon cancer'	CA IN SITU COLON
'V1005'	'Colon cancer'	HX OF COLONIC MALIGNANCY
'1540 '	'Rctm/anus ca'	MAL NEO RECTOSIGMOID JCT
'1541 '	'Rctm/anus ca'	MALIGNANT NEOPL RECTUM
'1542 '	'Rctm/anus ca'	MALIG NEOPL ANAL CANAL
'1543 '	'Rctm/anus ca'	MALIGNANT NEO ANUS NOS
'1548 '	'Rctm/anus ca'	MAL NEO RECTUM/ANUS NEC
'2304 '	'Rctm/anus ca'	CA IN SITU RECTUM
'2305 '	'Rctm/anus ca'	CA IN SITU ANAL CANAL
'2306 '	'Rctm/anus ca'	CA IN SITU ANUS NOS
'V1006'	'Rctm/anus ca'	HX-RECTAL & ANAL MALIGN
'1550 '	'Liver/ibd ca'	MAL NEO LIVER- PRIMARY
'1551 '	'Liver/ibd ca'	MAL NEO INTRAHEPAT DUCTS
'1552 '	'Liver/ibd ca'	MALIGNANT NEO LIVER NOS
'2308 '	'Liver/ibd ca'	CA IN SITU LIVER/BILIARY
'V1007'	'Liver/ibd ca'	HX OF LIVER MALIGNANCY
'1570 '	'Pancreas can'	MAL NEO PANCREAS HEAD
'1571 '	'Pancreas can'	MAL NEO PANCREAS BODY
'1572 '	'Pancreas can'	MAL NEO PANCREAS TAIL
'1573 '	'Pancreas can'	MAL NEO PANCREATIC DUCT
'1574 '	'Pancreas can'	MAL NEO ISLET LANGERHANS
'1578 '	'Pancreas can'	MALIG NEO PANCREAS NEC
'1579 '	'Pancreas can'	MALIG NEO PANCREAS NOS
'1520 '	'GI/perit can'	MALIGNANT NEOPL DUODENUM
'1521 '	'GI/perit can'	MALIGNANT NEOPL JEJUNUM
'1522 '	'GI/perit can'	MALIGNANT NEOPLASM ILEUM
'1523 '	'GI/perit can'	MAL NEO MECKEL-S DIVERT
'1528 '	'GI/perit can'	MAL NEO SMALL BOWEL NEC
'1529 '	'GI/perit can'	MAL NEO SMALL BOWEL NOS
'1560 '	'GI/perit can'	MALIG NEO GALLBLADDER
'1561 '	'GI/perit can'	MAL NEO EXTRAHEPAT DUCTS
'1562 '	'GI/perit can'	MAL NEO AMPULLA OF VATER

'1568'	'GI/perit can'	MALIG NEO BILIARY NEC
'1569'	'GI/perit can'	MALIG NEO BILIARY NOS
'1580'	'GI/perit can'	MAL NEO RETROPERITONEUM
'1588'	'GI/perit can'	MAL NEO PERITONEUM NEC
'1589'	'GI/perit can'	MAL NEO PERITONEUM NOS
'1591'	'GI/perit can'	MALIGNANT NEO SPLEEN NEC
'1598'	'GI/perit can'	MAL NEO GI/INTRA-ABD NEC
'1599'	'GI/perit can'	MAL NEO GI TRACT ILL-DEF
'2307'	'GI/perit can'	CA IN SITU BOWEL NEC/NOS
'2309'	'GI/perit can'	CA IN SITU GI NEC/NOS
'V1000'	'GI/perit can'	HX OF GI MALIGNANCY NOS
'V1009'	'GI/perit can'	HX OF GI MALIGNANCY NEC
'1622'	'Brnch/lng ca'	MALIG NEO MAIN BRONCHUS
'1623'	'Brnch/lng ca'	MAL NEO UPPER LOBE LUNG
'1624'	'Brnch/lng ca'	MAL NEO MIDDLE LOBE LUNG
'1625'	'Brnch/lng ca'	MAL NEO LOWER LOBE LUNG
'1628'	'Brnch/lng ca'	MAL NEO BRONCH/LUNG NEC
'1629'	'Brnch/lng ca'	MAL NEO BRONCH/LUNG NOS
'2312'	'Brnch/lng ca'	CA IN SITU BRONCHUS/LUNG
'V1011'	'Brnch/lng ca'	HX-BRONCHOGENIC MALIGNAN
'1620'	'Ot respir ca'	MALIGNANT NEO TRACHEA
'1630'	'Ot respir ca'	MAL NEO PARIETAL PLEURA
'1631'	'Ot respir ca'	MAL NEO VISCERAL PLEURA
'1638'	'Ot respir ca'	MALIG NEOPL PLEURA NEC
'1639'	'Ot respir ca'	MALIG NEOPL PLEURA NOS
'1650'	'Ot respir ca'	MAL NEO UPPER RESP NOS
'1658'	'Ot respir ca'	MAL NEO THORAX/RESP NEC
'1659'	'Ot respir ca'	MAL NEO RESP SYSTEM NOS
'2311'	'Ot respir ca'	CA IN SITU TRACHEA
'2318'	'Ot respir ca'	CA IN SITU RESP SYS NEC
'2319'	'Ot respir ca'	CA IN SITU RESP SYS NOS
'V1012'	'Ot respir ca'	HX-TRACHEAL MALIGNANCY
'V1020'	'Ot respir ca'	HX-RESP ORG MALIGNAN NOS
'V1022'	'Ot respir ca'	HX-NOSE/EAR/SINUS MALIG
'1700'	'Bone/ct cncr'	MAL NEO SKULL/FACE BONE
'1701'	'Bone/ct cncr'	MALIGNANT NEO MANDIBLE
'1702'	'Bone/ct cncr'	MALIG NEO VERTEBRAE
'1703'	'Bone/ct cncr'	MAL NEO RIBS/STERN/CLAV
'1704'	'Bone/ct cncr'	MAL NEO LONG BONES ARM
'1705'	'Bone/ct cncr'	MAL NEO BONES WRIST/HAND
'1706'	'Bone/ct cncr'	MAL NEO PELVIC GIRDLE
'1707'	'Bone/ct cncr'	MAL NEO LONG BONES LEG
'1708'	'Bone/ct cncr'	MAL NEO BONES ANKLE/FOOT
'1709'	'Bone/ct cncr'	MALIG NEOPL BONE NOS

'1710 '	'Bone/ct cncr'	MAL NEO SOFT TISSUE HEAD
'1712 '	'Bone/ct cncr'	MAL NEO SOFT TISSUE ARM
'1713 '	'Bone/ct cncr'	MAL NEO SOFT TISSUE LEG
'1714 '	'Bone/ct cncr'	MAL NEO SOFT TIS THORAX
'1715 '	'Bone/ct cncr'	MAL NEO SOFT TIS ABDOMEN
'1716 '	'Bone/ct cncr'	MAL NEO SOFT TIS PELVIS
'1717 '	'Bone/ct cncr'	MAL NEOPL TRUNK NOS
'1718 '	'Bone/ct cncr'	MAL NEO SOFT TISSUE NEC
'1719 '	'Bone/ct cncr'	MAL NEO SOFT TISSUE NOS
'1720 '	'Skin melanom'	MALIG MELANOMA LIP
'1721 '	'Skin melanom'	MALIG MELANOMA EYELID
'1722 '	'Skin melanom'	MALIG MELANOMA EAR
'1723 '	'Skin melanom'	MAL MELANOM FACE NEC/NOS
'1724 '	'Skin melanom'	MAL MELANOMA SCALP/NECK
'1725 '	'Skin melanom'	MALIG MELANOMA TRUNK
'1726 '	'Skin melanom'	MALIG MELANOMA ARM
'1727 '	'Skin melanom'	MALIG MELANOMA LEG
'1728 '	'Skin melanom'	MALIG MELANOMA SKIN NEC
'1729 '	'Skin melanom'	MALIG MELANOMA SKIN NOS
'V1082'	'Skin melanom'	HX-MALIG SKIN MELANOMA
'1730 '	'Non-epith ca'	MALIG NEO SKIN LIP
'1731 '	'Non-epith ca'	MALIG NEO SKIN EYELID
'1732 '	'Non-epith ca'	MALIG NEO SKIN EAR
'1733 '	'Non-epith ca'	MAL NEO SKIN FACE NEC
'1734 '	'Non-epith ca'	MAL NEO SCALP/SKIN NECK
'1735 '	'Non-epith ca'	MALIG NEO SKIN TRUNK
'1736 '	'Non-epith ca'	MALIG NEO SKIN ARM
'1737 '	'Non-epith ca'	MALIG NEO SKIN LEG
'1738 '	'Non-epith ca'	MALIG NEO SKIN NEC
'1739 '	'Non-epith ca'	MALIG NEO SKIN NOS
'2320 '	'Non-epith ca'	CA IN SITU SKIN LIP
'2321 '	'Non-epith ca'	CA IN SITU EYELID
'2322 '	'Non-epith ca'	CA IN SITU SKIN EAR
'2323 '	'Non-epith ca'	CA IN SITU SKIN FACE NEC
'2324 '	'Non-epith ca'	CA IN SITU SCALP
'2325 '	'Non-epith ca'	CA IN SITU SKIN TRUNK
'2326 '	'Non-epith ca'	CA IN SITU SKIN ARM
'2327 '	'Non-epith ca'	CA IN SITU SKIN LEG
'2328 '	'Non-epith ca'	CA IN SITU SKIN NEC
'2329 '	'Non-epith ca'	CA IN SITU SKIN NOS
'V1083'	'Non-epith ca'	HX-SKIN MALIGNANCY NEC
'1740 '	'Breast cancr'	MALIG NEO NIPPLE
'1741 '	'Breast cancr'	MAL NEO BREAST-CENTRAL
'1742 '	'Breast cancr'	MAL NEO BREAST UP-INNER

'1743 '	'Breast cancr'	MAL NEO BREAST LOW-INNER
'1744 '	'Breast cancr'	MAL NEO BREAST UP-OUTER
'1745 '	'Breast cancr'	MAL NEO BREAST LOW-OUTER
'1746 '	'Breast cancr'	MAL NEO BREAST-AXILLARY
'1748 '	'Breast cancr'	MALIGN NEOPL BREAST NEC
'1749 '	'Breast cancr'	MALIGN NEOPL BREAST NOS
'1750 '	'Breast cancr'	MAL NEO MALE NIPPLE
'1759 '	'Breast cancr'	MAL NEO MALE BREAST NEC
'2330 '	'Breast cancr'	CA IN SITU BREAST
'V103 '	'Breast cancr'	HX OF BREAST MALIGNANCY
'179 '	'Uterus cancr'	MALIG NEOPL UTERUS NOS
'1820 '	'Uterus cancr'	MALIG NEO CORPUS UTERI
'1821 '	'Uterus cancr'	MAL NEO UTERINE ISTHMUS
'1828 '	'Uterus cancr'	MAL NEO BODY UTERUS NEC
'2332 '	'Uterus cancr'	CA IN SITU UTERUS NEC
'V1042'	'Uterus cancr'	HX-UTERUS MALIGNANCY NEC
'1800 '	'Cervix cancr'	MALIG NEO ENDOCERVIX
'1801 '	'Cervix cancr'	MALIG NEO EXOCERVIX
'1808 '	'Cervix cancr'	MALIG NEO CERVIX NEC
'1809 '	'Cervix cancr'	MAL NEO CERVIX UTERI NOS
'2331 '	'Cervix cancr'	CA IN SITU CERVIX UTERI
'7950 '	'Cervix cancr'	ABN PAP SMEAR-CERVIX (End 2002)
'79506'	'Cervix cancr'	PAP SMR CYTOL EVID MALIG (Begin 2006)
'V1041'	'Cervix cancr'	HX-CERVICAL MALIGNANCY
'1830 '	'Ovary cancr'	MALIGN NEOPL OVARY
'V1043'	'Ovary cancr'	HX OF OVARIAN MALIGNANCY
'181 '	'Fem genit ca'	MALIGNANT NEOPL PLACENTA
'1832 '	'Fem genit ca'	MAL NEO FALLOPIAN TUBE
'1833 '	'Fem genit ca'	MAL NEO BROAD LIGAMENT
'1834 '	'Fem genit ca'	MALIG NEO PARAMETRIUM
'1835 '	'Fem genit ca'	MAL NEO ROUND LIGAMENT
'1838 '	'Fem genit ca'	MAL NEO ADNEXA NEC
'1839 '	'Fem genit ca'	MAL NEO ADNEXA NOS
'1840 '	'Fem genit ca'	MALIGN NEOPL VAGINA
'1841 '	'Fem genit ca'	MAL NEO LABIA MAJORA
'1842 '	'Fem genit ca'	MAL NEO LABIA MINORA
'1843 '	'Fem genit ca'	MALIGN NEOPL CLITORIS
'1844 '	'Fem genit ca'	MALIGN NEOPL VULVA NOS
'1848 '	'Fem genit ca'	MAL NEO FEMALE GENIT NEC
'1849 '	'Fem genit ca'	MAL NEO FEMALE GENIT NOS
'2333 '	'Fem genit ca'	CA IN SITU FEM GEN NEC (end 2007)
'23330'	'Fem genit ca'	CA IN SITU FEM GEN NOS (Begin 2007)
'23331'	'Fem genit ca'	CARCINOMA IN SITU VAGINA (Begin 2007)
'23332'	'Fem genit ca'	CARCINOMA IN SITU VULVA (Begin 2007)

'23339'	'Fem genit ca'	CA IN SITU FEM GEN NEC (Begin 2007)
'V1040'	'Fem genit ca'	HX-FEMALE GENIT MALG NOS
'V1044'	'Fem genit ca'	HX-FEMALE GENIT MALG NEC
'185 '	'Prostate can'	MALIGN NEOPL PROSTATE
'2334 '	'Prostate can'	CA IN SITU PROSTATE
'V1046'	'Prostate can'	HX-PROSTATIC MALIGNANCY
'1860 '	'Testis cancr'	MAL NEO UNDESCEND TESTIS
'1869 '	'Testis cancr'	MALIG NEO TESTIS NEC
'V1047'	'Testis cancr'	HX-TESTICULAR MALIGNANCY
'1871 '	'Mal genit ca'	MALIGN NEOPL PREPUCE
'1872 '	'Mal genit ca'	MALIG NEO GLANS PENIS
'1873 '	'Mal genit ca'	MALIG NEO PENIS BODY
'1874 '	'Mal genit ca'	MALIG NEO PENIS NOS
'1875 '	'Mal genit ca'	MALIG NEO EPIDIDYMIS
'1876 '	'Mal genit ca'	MAL NEO SPERMATIC CORD
'1877 '	'Mal genit ca'	MALIGN NEOPL SCROTUM
'1878 '	'Mal genit ca'	MAL NEO MALE GENITAL NEC
'1879 '	'Mal genit ca'	MAL NEO MALE GENITAL NOS
'2335 '	'Mal genit ca'	CA IN SITU PENIS
'2336 '	'Mal genit ca'	CA IN SITU MALE GEN NEC
'V1045'	'Mal genit ca'	HX-MALE GENIT MALIG NOS
'V1048'	'Mal genit ca'	HX MALIG EPIDIDYMIS (Begin 1998)
'V1049'	'Mal genit ca'	HX-MALE GENIT MALIG NEC
'1880 '	'Bladder cncr'	MAL NEO BLADDER-TRIGONE
'1881 '	'Bladder cncr'	MAL NEO BLADDER-DOME
'1882 '	'Bladder cncr'	MAL NEO BLADDER-LATERAL
'1883 '	'Bladder cncr'	MAL NEO BLADDER-ANTERIOR
'1884 '	'Bladder cncr'	MAL NEO BLADDER-POST
'1885 '	'Bladder cncr'	MAL NEO BLADDER NECK
'1886 '	'Bladder cncr'	MAL NEO URETERIC ORIFICE
'1887 '	'Bladder cncr'	MALIG NEO URACHUS
'1888 '	'Bladder cncr'	MALIG NEO BLADDER NEC
'1889 '	'Bladder cncr'	MALIG NEO BLADDER NOS
'2337 '	'Bladder cncr'	CA IN SITU BLADDER
'V1051'	'Bladder cncr'	HX OF BLADDER MALIGNANCY
'1890 '	'Kidny/rnl ca'	MALIG NEOPL KIDNEY
'1891 '	'Kidny/rnl ca'	MALIG NEO RENAL PELVIS
'V1052'	'Kidny/rnl ca'	HX OF KIDNEY MALIGNANCY
'V1053'	'Kidny/rnl ca'	HX MALIGNANT NEOPLASM- RENAL PELVIS (Begin 2001)
'1892 '	'Uriny org ca'	MALIGN NEOPL URETER
'1893 '	'Uriny org ca'	MALIGN NEOPL URETHRA
'1894 '	'Uriny org ca'	MAL NEO PARAURETHRAL
'1898 '	'Uriny org ca'	MAL NEO URINARY NEC
'1899 '	'Uriny org ca'	MAL NEO URINARY NOS

'2339 '	'Uriny org ca'	CA IN SITU URINARY NEC
'V1050'	'Uriny org ca'	HX-URINARY MALIGNAN NOS
'V1059'	'Uriny org ca'	HX-URINARY MALIGNAN NEC
'1910 '	'Brain/ns can'	MALIGN NEOPL CEREBRUM
'1911 '	'Brain/ns can'	MALIG NEO FRONTAL LOBE
'1912 '	'Brain/ns can'	MAL NEO TEMPORAL LOBE
'1913 '	'Brain/ns can'	MAL NEO PARIETAL LOBE
'1914 '	'Brain/ns can'	MAL NEO OCCIPITAL LOBE
'1915 '	'Brain/ns can'	MAL NEO CEREB VENTRICLE
'1916 '	'Brain/ns can'	MAL NEO CEREBELLUM NOS
'1917 '	'Brain/ns can'	MAL NEO BRAIN STEM
'1918 '	'Brain/ns can'	MALIG NEO BRAIN NEC
'1919 '	'Brain/ns can'	MALIG NEO BRAIN NOS
'1920 '	'Brain/ns can'	MAL NEO CRANIAL NERVES
'1921 '	'Brain/ns can'	MAL NEO CEREBRAL MENING
'1922 '	'Brain/ns can'	MAL NEO SPINAL CORD
'1923 '	'Brain/ns can'	MAL NEO SPINAL MENINGES
'1928 '	'Brain/ns can'	MAL NEO NERVOUS SYST NEC
'1929 '	'Brain/ns can'	MAL NEO NERVOUS SYST NOS
'V1085'	'Brain/ns can'	HX OF BRAIN MALIGNANCY
'V1086'	'Brain/ns can'	HX-MALIGN NERVE SYST NEC
'193 '	'Thyroid cncr'	MALIGN NEOPL THYROID
'25802'	'Thyroid cncr'	MULT ENDO NEOP TYPE IIA (Begin 2007)
'25803'	'Thyroid cncr'	MULT ENDO NEOP TYPE IIB (Begin 2007)
'V1087'	'Thyroid cncr'	HX OF THYROID MALIGNANCY
'1640 '	'Ot primry ca'	MALIGNANT NEOPL THYMUS
'1641 '	'Ot primry ca'	MALIGNANT NEOPL HEART
'1642 '	'Ot primry ca'	MAL NEO ANT MEDIASTINUM
'1643 '	'Ot primry ca'	MAL NEO POST MEDIASTINUM
'1648 '	'Ot primry ca'	MAL NEO MEDIASTINUM NEC
'1649 '	'Ot primry ca'	MAL NEO MEDIASTINUM NOS
'1760 '	'Ot primry ca'	SKIN - KAPOSI-S SARCOMA (Begin 1991)
'1761 '	'Ot primry ca'	SFT TISUE - KPSI-S SRCMA (Begin 1991)
'1762 '	'Ot primry ca'	PALATE - KPSI-S SARCOMA (Begin 1991)
'1763 '	'Ot primry ca'	GI SITES - KPSI-S SRCOMA (Begin 1991)
'1764 '	'Ot primry ca'	LUNG - KAPOSI-S SARCOMA (Begin 1991)
'1765 '	'Ot primry ca'	LYM NDS - KPSI-S SARCOMA (Begin 1991)
'1768 '	'Ot primry ca'	SPF STS - KPSI-S SARCOMA (Begin 1991)
'1769 '	'Ot primry ca'	KAPOSI-S SARCOMA NOS (Begin 1991)
'1900 '	'Ot primry ca'	MALIGN NEOPL EYEBALL
'1901 '	'Ot primry ca'	MALIGN NEOPL ORBIT
'1902 '	'Ot primry ca'	MAL NEO LACRIMAL GLAND
'1903 '	'Ot primry ca'	MAL NEO CONJUNCTIVA
'1904 '	'Ot primry ca'	MALIGN NEOPL CORNEA



'1905 '	'Ot primry ca'	MALIGN NEOPL RETINA
'1906 '	'Ot primry ca'	MALIGN NEOPL CHOROID
'1907 '	'Ot primry ca'	MAL NEO LACRIMAL DUCT
'1908 '	'Ot primry ca'	MALIGN NEOPL EYE NEC
'1909 '	'Ot primry ca'	MALIGN NEOPL EYE NOS
'1940 '	'Ot primry ca'	MALIGN NEOPL ADRENAL
'1941 '	'Ot primry ca'	MALIG NEO PARATHYROID
'1943 '	'Ot primry ca'	MALIG NEO PITUITARY
'1944 '	'Ot primry ca'	MALIGN NEO PINEAL GLAND
'1945 '	'Ot primry ca'	MAL NEO CAROTID BODY
'1946 '	'Ot primry ca'	MAL NEO PARAGANGLIA NEC
'1948 '	'Ot primry ca'	MAL NEO ENDOCRINE NEC
'1949 '	'Ot primry ca'	MAL NEO ENDOCRINE NOS
'1951 '	'Ot primry ca'	MALIGN NEOPL THORAX
'1952 '	'Ot primry ca'	MALIG NEO ABDOMEN
'1953 '	'Ot primry ca'	MALIGN NEOPL PELVIS
'1954 '	'Ot primry ca'	MALIGN NEOPL ARM
'1955 '	'Ot primry ca'	MALIGN NEOPL LEG
'1958 '	'Ot primry ca'	MALIG NEO SITE NEC
'20230'	'Ot primry ca'	MAL HISTIOCYTOSIS UNSPEC
'20231'	'Ot primry ca'	MAL HISTIOCYTOSIS HEAD
'20232'	'Ot primry ca'	MAL HISTIOCYTOSIS THORAX
'20233'	'Ot primry ca'	MAL HISTIOCYTOSIS ABDOM
'20234'	'Ot primry ca'	MAL HISTIOCYTOSIS AXILLA
'20235'	'Ot primry ca'	MAL HISTIOCYTOSIS INGUIN
'20236'	'Ot primry ca'	MAL HISTIOCYTOSIS PELVIC
'20237'	'Ot primry ca'	MAL HISTIOCYTOSIS SPLEEN
'20238'	'Ot primry ca'	MAL HISTIOCYTOSIS MULT
'20250'	'Ot primry ca'	LETTERER-SIWE DIS UNSPEC
'20251'	'Ot primry ca'	LETTERER-SIWE DIS HEAD
'20252'	'Ot primry ca'	LETTERER-SIWE DIS THORAX
'20253'	'Ot primry ca'	LETTERER-SIWE DIS ABDOM
'20254'	'Ot primry ca'	LETTERER-SIWE DIS AXILLA
'20255'	'Ot primry ca'	LETTERER-SIWE DIS INGUIN
'20256'	'Ot primry ca'	LETTERER-SIWE DIS PELVIC
'20257'	'Ot primry ca'	LETTERER-SIWE DIS SPLEEN
'20258'	'Ot primry ca'	LETTERER-SIWE DIS MULT
'20260'	'Ot primry ca'	MAL MASTOCYTOSIS UNSPEC
'20261'	'Ot primry ca'	MAL MASTOCYTOSIS HEAD
'20262'	'Ot primry ca'	MAL MASTOCYTOSIS THORAX
'20263'	'Ot primry ca'	MAL MASTOCYTOSIS ABDOM
'20264'	'Ot primry ca'	MAL MASTOCYTOSIS AXILLA
'20265'	'Ot primry ca'	MAL MASTOCYTOSIS INGUIN
'20266'	'Ot primry ca'	MAL MASTOCYTOSIS PELVIC

'20267'	'Ot primry ca'	MAL MASTOCYTOSIS SPLEEN
'20268'	'Ot primry ca'	MAL MASTOCYTOSIS MULT
'2340 '	'Ot primry ca'	CA IN SITU EYE
'2348 '	'Ot primry ca'	CA IN SITU NEC
'2349 '	'Ot primry ca'	CA IN SITU NOS
'7951 '	'Ot primry ca'	ABN PAP SMEAR-OTH SITE
'V1029'	'Ot primry ca'	HX-INTRATHORACIC MAL NEC
'V1081'	'Ot primry ca'	HX OF BONE MALIGNANCY
'V1084'	'Ot primry ca'	HX OF EYE MALIGNANCY
'V1088'	'Ot primry ca'	HX-ENDOCRINE MALIGN NEC
'V1089'	'Ot primry ca'	HX OF MALIGNANCY NEC
'V109 '	'Ot primry ca'	HX OF MALIGNANCY NOS
'V711 '	'Ot primry ca'	OBSV-SUSPCT MAL NEOPLASM
'1960 '	'2ndary malig'	MAL NEO LYMPH-HEAD/NECK
'1961 '	'2ndary malig'	MAL NEO LYMPH-INTRATHOR
'1962 '	'2ndary malig'	MAL NEO LYMPH INTRA-ABD
'1963 '	'2ndary malig'	MAL NEO LYMPH-AXILLA/ARM
'1965 '	'2ndary malig'	MAL NEO LYMPH-INGUIN/LEG
'1966 '	'2ndary malig'	MAL NEO LYMPH-INTRAPELV
'1968 '	'2ndary malig'	MAL NEO LYMPH NODE-MULT
'1969 '	'2ndary malig'	MAL NEO LYMPH NODE NOS
'1970 '	'2ndary malig'	SECONDARY MALIG NEO LUNG
'1971 '	'2ndary malig'	SEC MAL NEO MEDIASTINUM
'1972 '	'2ndary malig'	SECOND MALIG NEO PLEURA
'1973 '	'2ndary malig'	SEC MALIG NEO RESP NEC
'1974 '	'2ndary malig'	SEC MALIG NEO SM BOWEL
'1975 '	'2ndary malig'	SEC MALIG NEO LG BOWEL
'1976 '	'2ndary malig'	SEC MAL NEO PERITONEUM
'1977 '	'2ndary malig'	SECOND MALIG NEO LIVER
'1978 '	'2ndary malig'	SEC MAL NEO GI NEC
'1980 '	'2ndary malig'	SECOND MALIG NEO KIDNEY
'1981 '	'2ndary malig'	SEC MALIG NEO URIN NEC
'1982 '	'2ndary malig'	SECONDARY MALIG NEO SKIN
'1983 '	'2ndary malig'	SEC MAL NEO BRAIN/SPINE
'1984 '	'2ndary malig'	SEC MALIG NEO NERVE NEC
'1985 '	'2ndary malig'	SECONDARY MALIG NEO BONE
'1986 '	'2ndary malig'	SECOND MALIG NEO OVARY
'1987 '	'2ndary malig'	SECOND MALIG NEO ADRENAL
'19881'	'2ndary malig'	SECOND MALIG NEO BREAST
'19882'	'2ndary malig'	SECOND MALIG NEO GENITAL
'19889'	'2ndary malig'	SECONDARY MALIG NEO NEC
'78951'	'2ndary malig'	MALIGNANT ASCITES (Begin 2007)
'1990 '	'Malig neopls'	MALIG NEO DISSEMINATED
'1991 '	'Malig neopls'	MALIGNANT NEOPLASM NOS

'2350 '	'Neoplsm unsp'	UNC BEHAV NEO SALIVARY
'2351 '	'Neoplsm unsp'	UNC BEHAV NEO ORAL/PHAR
'2352 '	'Neoplsm unsp'	UNC BEHAV NEO INTESTINE
'2353 '	'Neoplsm unsp'	UNC BEHAV NEO LIVER
'2354 '	'Neoplsm unsp'	UNC BEHAV NEO PERITONEUM
'2355 '	'Neoplsm unsp'	UNC BEHAV NEO GI NEC
'2356 '	'Neoplsm unsp'	UNC BEHAV NEO LARYNX
'2357 '	'Neoplsm unsp'	UNC BEHAV NEO LUNG
'2358 '	'Neoplsm unsp'	UNC BEHAV NEO PLEURA
'2359 '	'Neoplsm unsp'	UNC BEHAV NEO RESP NEC
'2360 '	'Neoplsm unsp'	UNCERT BEHAV NEO UTERUS
'2361 '	'Neoplsm unsp'	UNC BEHAV NEO PLACENTA
'2362 '	'Neoplsm unsp'	UNC BEHAV NEO OVARY
'2363 '	'Neoplsm unsp'	UNC BEHAV NEO FEMALE NEC
'2364 '	'Neoplsm unsp'	UNC BEHAV NEO TESTIS
'2365 '	'Neoplsm unsp'	UNC BEHAV NEO PROSTATE
'2366 '	'Neoplsm unsp'	UNC BEHAV NEO MALE NEC
'2367 '	'Neoplsm unsp'	UNC BEHAV NEO BLADDER
'23690'	'Neoplsm unsp'	UNC BEHAV NEO URINAR NOS
'23691'	'Neoplsm unsp'	UNC BEHAV NEO KIDNEY
'23699'	'Neoplsm unsp'	UNC BEHAV NEO URINAR NEC
'2370 '	'Neoplsm unsp'	UNC BEHAV NEO PITUITARY
'2371 '	'Neoplsm unsp'	UNC BEHAV NEO PINEAL
'2372 '	'Neoplsm unsp'	UNC BEHAV NEO ADRENAL
'2373 '	'Neoplsm unsp'	UNC BEHAV NEO PARAGANG
'2374 '	'Neoplsm unsp'	UNCER NEO ENDOCRINE NEC
'2375 '	'Neoplsm unsp'	UNC BEH NEO BRAIN/SPINAL
'2376 '	'Neoplsm unsp'	UNC BEHAV NEO MENINGES
'2377 '	'Neoplsm unsp'	NEUROFIBROMATOSIS (Begin 1980, End 1990)
'23770'	'Neoplsm unsp'	NEUROFIBROMATOSIS NOS (Begin 1990)
'23771'	'Neoplsm unsp'	NEUROFIBROMATOSIS TYPE I (Begin 1990)
'23772'	'Neoplsm unsp'	NEUROFIBROMATOSIS TYP II (Begin 1990)
'2379 '	'Neoplsm unsp'	UNC BEH NEO NERV SYS NEC
'2380 '	'Neoplsm unsp'	UNC BEHAV NEO BONE
'2381 '	'Neoplsm unsp'	UNC BEHAV NEO SOFT TISSU
'2382 '	'Neoplsm unsp'	UNC BEHAV NEO SKIN
'2383 '	'Neoplsm unsp'	UNC BEHAV NEO BREAST
'2384 '	'Neoplsm unsp'	POLYCYTHEMIA VERA
'2385 '	'Neoplsm unsp'	MASTOCYTOMA NOS
'2386 '	'Neoplsm unsp'	PLASMACYTOMA NOS
'2387 '	'Neoplsm unsp'	LYMPHOPROLIFERAT DIS NOS
'23871'	'Neoplsm unsp'	ESSNTIAL THROMBOCYTHEMIA (Begin 2006)
'23872'	'Neoplsm unsp'	LOW GRDE MYELODY SYN LES (Begin 2006)
'23873'	'Neoplsm unsp'	HI GRDE MYELOYDYS SYN LES (Begin 2006)

'23874'	'Neoplsm unsp'	MYELOYDYSPLS SYN W 5Q DEL (Begin 2006)
'23875'	'Neoplsm unsp'	MYELOYDYSPLASTIC SYND NOS (Begin 2006)
'23876'	'Neoplsm unsp'	MYELOFI W MYELO METAPLAS (Begin 2006)
'23879'	'Neoplsm unsp'	LYMPH/HEMATPOITC TIS NEC (Begin 2006)
'2388 '	'Neoplsm unsp'	UNCERT BEHAVIOR NEO NEC
'2389 '	'Neoplsm unsp'	UNCERT BEHAVIOR NEO NOS
'2390 '	'Neoplsm unsp'	DIGESTIVE NEOPLASM NOS
'2391 '	'Neoplsm unsp'	RESPIRATORY NEOPLASM NOS
'2392 '	'Neoplsm unsp'	BONE/SKIN NEOPLASM NOS
'2393 '	'Neoplsm unsp'	BREAST NEOPLASM NOS
'2394 '	'Neoplsm unsp'	BLADDER NEOPLASM NOS
'2395 '	'Neoplsm unsp'	OTHER GU NEOPLASM NOS
'2396 '	'Neoplsm unsp'	BRAIN NEOPLASM NOS
'2397 '	'Neoplsm unsp'	ENDOCRINE/NERV NEO NOS
'2398 '	'Neoplsm unsp'	NEOPLASM NOS- SITE NEC
'2399 '	'Neoplsm unsp'	NEOPLASM NOS

## B. Hematologic Cancer Codes

ICD-9-CM CODE	CATEGORY	SPECIFIC DIAGNOSIS
'20100'	'Hodgkin-s ds'	HODGKINS PARAGRAN UNSPEC
'20101'	'Hodgkin-s ds'	HODGKINS PARAGRAN HEAD
'20102'	'Hodgkin-s ds'	HODGKINS PARAGRAN THORAX
'20103'	'Hodgkin-s ds'	HODGKINS PARAGRAN ABDOM
'20104'	'Hodgkin-s ds'	HODGKINS PARAGRAN AXILLA
'20105'	'Hodgkin-s ds'	HODGKINS PARAGRAN INGUIN
'20106'	'Hodgkin-s ds'	HODGKINS PARAGRAN PELVIC
'20107'	'Hodgkin-s ds'	HODGKINS PARAGRAN SPLEEN
'20108'	'Hodgkin-s ds'	HODGKINS PARAGRAN MULT
'20110'	'Hodgkin-s ds'	HODGKINS GRANULOM UNSPEC
'20111'	'Hodgkin-s ds'	HODGKINS GRANULOM HEAD
'20112'	'Hodgkin-s ds'	HODGKINS GRANULOM THORAX
'20113'	'Hodgkin-s ds'	HODGKINS GRANULOM ABDOM
'20114'	'Hodgkin-s ds'	HODGKINS GRANULOM AXILLA
'20115'	'Hodgkin-s ds'	HODGKINS GRANULOM INGUIN
'20116'	'Hodgkin-s ds'	HODGKINS GRANULOM PELVIC
'20117'	'Hodgkin-s ds'	HODGKINS GRANULOM SPLEEN
'20118'	'Hodgkin-s ds'	HODGKINS GRANULOM MULT
'20120'	'Hodgkin-s ds'	HODGKINS SARCOMA UNSPEC
'20121'	'Hodgkin-s ds'	HODGKINS SARCOMA HEAD
'20122'	'Hodgkin-s ds'	HODGKINS SARCOMA THORAX
'20123'	'Hodgkin-s ds'	HODGKINS SARCOMA ABDOM
'20124'	'Hodgkin-s ds'	HODGKINS SARCOMA AXILLA

'20125'	'Hodgkin-s ds'	HODGKINS SARCOMA INGUIN
'20126'	'Hodgkin-s ds'	HODGKINS SARCOMA PELVIC
'20127'	'Hodgkin-s ds'	HODGKINS SARCOMA SPLEEN
'20128'	'Hodgkin-s ds'	HODGKINS SARCOMA MULT
'20140'	'Hodgkin-s ds'	HODG LYMPH-HISTIO UNSPEC
'20141'	'Hodgkin-s ds'	HODG LYMPH-HISTIO HEAD
'20142'	'Hodgkin-s ds'	HODG LYMPH-HISTIO THORAX
'20143'	'Hodgkin-s ds'	HODG LYMPH-HISTIO ABDOM
'20144'	'Hodgkin-s ds'	HODG LYMPH-HISTIO AXILLA
'20145'	'Hodgkin-s ds'	HODG LYMPH-HISTIO INGUIN
'20146'	'Hodgkin-s ds'	HODG LYMPH-HISTIO PELVIC
'20147'	'Hodgkin-s ds'	HODG LYMPH-HISTIO SPLEEN
'20148'	'Hodgkin-s ds'	HODG LYMPH-HISTIO MULT
'20150'	'Hodgkin-s ds'	HODG NODUL SCLERO UNSPEC
'20151'	'Hodgkin-s ds'	HODG NODUL SCLERO HEAD
'20152'	'Hodgkin-s ds'	HODG NODUL SCLERO THORAX
'20153'	'Hodgkin-s ds'	HODG NODUL SCLERO ABDOM
'20154'	'Hodgkin-s ds'	HODG NODUL SCLERO AXILLA
'20155'	'Hodgkin-s ds'	HODG NODUL SCLERO INGUIN
'20156'	'Hodgkin-s ds'	HODG NODUL SCLERO PELVIC
'20157'	'Hodgkin-s ds'	HODG NODUL SCLERO SPLEEN
'20158'	'Hodgkin-s ds'	HODG NODUL SCLERO MULT
'20160'	'Hodgkin-s ds'	HODGKINS MIX CELL UNSPEC
'20161'	'Hodgkin-s ds'	HODGKINS MIX CELL HEAD
'20162'	'Hodgkin-s ds'	HODGKINS MIX CELL THORAX
'20163'	'Hodgkin-s ds'	HODGKINS MIX CELL ABDOM
'20164'	'Hodgkin-s ds'	HODGKINS MIX CELL AXILLA
'20165'	'Hodgkin-s ds'	HODGKINS MIX CELL INGUIN
'20166'	'Hodgkin-s ds'	HODGKINS MIX CELL PELVIC
'20167'	'Hodgkin-s ds'	HODGKINS MIX CELL SPLEEN
'20168'	'Hodgkin-s ds'	HODGKINS MIX CELL MULT
'20170'	'Hodgkin-s ds'	HODG LYMPH DEPLET UNSPEC
'20171'	'Hodgkin-s ds'	HODG LYMPH DEPLET HEAD
'20172'	'Hodgkin-s ds'	HODG LYMPH DEPLET THORAX
'20173'	'Hodgkin-s ds'	HODG LYMPH DEPLET ABDOM
'20174'	'Hodgkin-s ds'	HODG LYMPH DEPLET AXILLA
'20175'	'Hodgkin-s ds'	HODG LYMPH DEPLET INGUIN
'20176'	'Hodgkin-s ds'	HODG LYMPH DEPLET PELVIC
'20177'	'Hodgkin-s ds'	HODG LYMPH DEPLET SPLEEN
'20178'	'Hodgkin-s ds'	HODG LYMPH DEPLET MULT
'20190'	'Hodgkin-s ds'	HODGKINS DIS NOS UNSPEC
'20191'	'Hodgkin-s ds'	HODGKINS DIS NOS HEAD
'20192'	'Hodgkin-s ds'	HODGKINS DIS NOS THORAX
'20193'	'Hodgkin-s ds'	HODGKINS DIS NOS ABDOM

'20194'	'Hodgkin-s ds'	HODGKINS DIS NOS AXILLA
'20195'	'Hodgkin-s ds'	HODGKINS DIS NOS INGUIN
'20196'	'Hodgkin-s ds'	HODGKINS DIS NOS PELVIC
'20197'	'Hodgkin-s ds'	HODGKINS DIS NOS SPLEEN
'20198'	'Hodgkin-s ds'	HODGKINS DIS NOS MULT
'V1072'	'Hodgkin-s ds'	HX-HODGKIN-s DISEASE
'20000'	'Non-Hodg lym'	RETICULOSARCOMA UNSPEC
'20001'	'Non-Hodg lym'	RETICULOSARCOMA HEAD
'20002'	'Non-Hodg lym'	RETICULOSARCOMA THORAX
'20003'	'Non-Hodg lym'	RETICULOSARCOMA ABDOM
'20004'	'Non-Hodg lym'	RETICULOSARCOMA AXILLA
'20005'	'Non-Hodg lym'	RETICULOSARCOMA INGUIN
'20006'	'Non-Hodg lym'	RETICULOSARCOMA PELVIC
'20007'	'Non-Hodg lym'	RETICULOSARCOMA SPLEEN
'20008'	'Non-Hodg lym'	RETICULOSARCOMA MULT
'20010'	'Non-Hodg lym'	LYMPHOSARCOMA UNSPEC
'20011'	'Non-Hodg lym'	LYMPHOSARCOMA HEAD
'20012'	'Non-Hodg lym'	LYMPHOSARCOMA THORAX
'20013'	'Non-Hodg lym'	LYMPHOSARCOMA ABDOM
'20014'	'Non-Hodg lym'	LYMPHOSARCOMA AXILLA
'20015'	'Non-Hodg lym'	LYMPHOSARCOMA INGUIN
'20016'	'Non-Hodg lym'	LYMPHOSARCOMA PELVIC
'20017'	'Non-Hodg lym'	LYMPHOSARCOMA SPLEEN
'20018'	'Non-Hodg lym'	LYMPHOSARCOMA MULT
'20020'	'Non-Hodg lym'	BURKITT-s TUMOR UNSPEC
'20021'	'Non-Hodg lym'	BURKITT-s TUMOR HEAD
'20022'	'Non-Hodg lym'	BURKITT-s TUMOR THORAX
'20023'	'Non-Hodg lym'	BURKITT-s TUMOR ABDOM
'20024'	'Non-Hodg lym'	BURKITT-s TUMOR AXILLA
'20025'	'Non-Hodg lym'	BURKITT-s TUMOR INGUIN
'20026'	'Non-Hodg lym'	BURKITT-s TUMOR PELVIC
'20027'	'Non-Hodg lym'	BURKITT-s TUMOR SPLEEN
'20028'	'Non-Hodg lym'	BURKITT-s TUMOR MULT
'20030'	'Non-Hodg lym'	MARGNL ZONE LYM XTRNDL (Begin 2007)
'20031'	'Non-Hodg lym'	MARGIN ZONE LYM HEAD (Begin 2007)
'20032'	'Non-Hodg lym'	MARGIN ZONE LYM THORAX (Begin 2007)
'20033'	'Non-Hodg lym'	MARGIN ZONE LYM ABDOM (Begin 2007)
'20034'	'Non-Hodg lym'	MARGIN ZONE LYM AXILLA (Begin 2007)
'20035'	'Non-Hodg lym'	MARGIN ZONE LYM INGUIN (Begin 2007)
'20036'	'Non-Hodg lym'	MARGIN ZONE LYM PELVIC (Begin 2007)
'20037'	'Non-Hodg lym'	MARGIN ZONE LYMPH SPLEEN (Begin 2007)
'20038'	'Non-Hodg lym'	MARGIN ZONE LYMPH MULTIP (Begin 2007)
'20040'	'Non-Hodg lym'	MANTLE CELL LYM XTRRNDL (Begin 2007)
'20041'	'Non-Hodg lym'	MANTLE CELL LYMPH HEAD (Begin 2007)

'20042'	'Non-Hodg lym'	MANTLE CELL LYMPH THORAX (Begin 2007)
'20043'	'Non-Hodg lym'	MANTLE CELL LYMPH ABDOM (Begin 2007)
'20044'	'Non-Hodg lym'	MANTLE CELL LYMPH AXILLA (Begin 2007)
'20045'	'Non-Hodg lym'	MANTLE CELL LYMPH INGUIN (Begin 2007)
'20046'	'Non-Hodg lym'	MANTLE CELL LYMPH PELVIC (Begin 2007)
'20047'	'Non-Hodg lym'	MANTLE CELL LYMPH SPLEEN (Begin 2007)
'20048'	'Non-Hodg lym'	MANTLE CELL LYMPH MULTIP (Begin 2007)
'20050'	'Non-Hodg lym'	PRIMARY CNS LYMPH XTRNDL (Begin 2007)
'20051'	'Non-Hodg lym'	PRIMARY CNS LYMPH HEAD (Begin 2007)
'20052'	'Non-Hodg lym'	PRIMARY CNS LYMPH THORAX (Begin 2007)
'20053'	'Non-Hodg lym'	PRIMARY CNS LYMPH ABDOM (Begin 2007)
'20054'	'Non-Hodg lym'	PRIMARY CNS LYMPH AXILLA (Begin 2007)
'20055'	'Non-Hodg lym'	PRIMARY CNS LYM INGUIN (Begin 2007)
'20056'	'Non-Hodg lym'	PRIMARY CNS LYMPH PELVIC (Begin 2007)
'20057'	'Non-Hodg lym'	PRIMARY CNS LYMPH SPLEEN (Begin 2007)
'20058'	'Non-Hodg lym'	PRIMARY CNS LYMPH MULTIP (Begin 2007)
'20060'	'Non-Hodg lym'	ANAPLASTIC LYMPH XTRNDL (Begin 2007)
'20061'	'Non-Hodg lym'	ANAPLASTIC LYMPH HEAD (Begin 2007)
'20062'	'Non-Hodg lym'	ANAPLASTIC LYMPH THORAX (Begin 2007)
'20063'	'Non-Hodg lym'	ANAPLASTIC LYMPH ABDOM (Begin 2007)
'20064'	'Non-Hodg lym'	ANAPLASTIC LYMPH AXILLA (Begin 2007)
'20065'	'Non-Hodg lym'	ANAPLASTIC LYMPH INGUIN (Begin 2007)
'20066'	'Non-Hodg lym'	ANAPLASTIC LYMPH PELVIC (Begin 2007)
'20067'	'Non-Hodg lym'	ANAPLASTIC LYMPH SPLEEN (Begin 2007)
'20068'	'Non-Hodg lym'	ANAPLASTIC LYMPH MULTIP (Begin 2007)
'20070'	'Non-Hodg lym'	LARGE CELL LYMPH XTRNDL (Begin 2007)
'20071'	'Non-Hodg lym'	LARGE CELL LYMPHOMA HEAD (Begin 2007)
'20072'	'Non-Hodg lym'	LARGE CELL LYMPH THORAX (Begin 2007)
'20073'	'Non-Hodg lym'	LARGE CELL LYMPH ABDOM (Begin 2007)
'20074'	'Non-Hodg lym'	LARGE CELL LYMPH AXILLA (Begin 2007)
'20075'	'Non-Hodg lym'	LARGE CELL LYMPH INGUIN (Begin 2007)
'20076'	'Non-Hodg lym'	LARGE CELL LYMPH PELVIC (Begin 2007)
'20077'	'Non-Hodg lym'	LARGE CELL LYMPH SPLEEN (Begin 2007)
'20078'	'Non-Hodg lym'	LARGE CELL LYMPH MULTIP (Begin 2007)
'20080'	'Non-Hodg lym'	MIXED LYMPHOSARC UNSPEC
'20081'	'Non-Hodg lym'	MIXED LYMPHOSARC HEAD
'20082'	'Non-Hodg lym'	MIXED LYMPHOSARC THORAX
'20083'	'Non-Hodg lym'	MIXED LYMPHOSARC ABDOM
'20084'	'Non-Hodg lym'	MIXED LYMPHOSARC AXILLA
'20085'	'Non-Hodg lym'	MIXED LYMPHOSARC INGUIN
'20086'	'Non-Hodg lym'	MIXED LYMPHOSARC PELVIC
'20087'	'Non-Hodg lym'	MIXED LYMPHOSARC SPLEEN
'20088'	'Non-Hodg lym'	MIXED LYMPHOSARC MULT
'20200'	'Non-Hodg lym'	NODULAR LYMPHOMA UNSPEC

'20201'	'Non-Hodg lym'	NODULAR LYMPHOMA HEAD
'20202'	'Non-Hodg lym'	NODULAR LYMPHOMA THORAX
'20203'	'Non-Hodg lym'	NODULAR LYMPHOMA ABDOM
'20204'	'Non-Hodg lym'	NODULAR LYMPHOMA AXILLA
'20205'	'Non-Hodg lym'	NODULAR LYMPHOMA INGUIN
'20206'	'Non-Hodg lym'	NODULAR LYMPHOMA PELVIC
'20207'	'Non-Hodg lym'	NODULAR LYMPHOMA SPLEEN
'20208'	'Non-Hodg lym'	NODULAR LYMPHOMA MULT
'20210'	'Non-Hodg lym'	MYCOSIS FUNGOIDES UNSPEC
'20211'	'Non-Hodg lym'	MYCOSIS FUNGOIDES HEAD
'20212'	'Non-Hodg lym'	MYCOSIS FUNGOIDES THORAX
'20213'	'Non-Hodg lym'	MYCOSIS FUNGOIDES ABDOM
'20214'	'Non-Hodg lym'	MYCOSIS FUNGOIDES AXILLA
'20215'	'Non-Hodg lym'	MYCOSIS FUNGOIDES INGUIN
'20216'	'Non-Hodg lym'	MYCOSIS FUNGOIDES PELVIC
'20217'	'Non-Hodg lym'	MYCOSIS FUNGOIDES SPLEEN
'20218'	'Non-Hodg lym'	MYCOSIS FUNGOIDES MULT
'20220'	'Non-Hodg lym'	SEZARY-s DISEASE UNSPEC
'20221'	'Non-Hodg lym'	SEZARY-s DISEASE HEAD
'20222'	'Non-Hodg lym'	SEZARY-s DISEASE THORAX
'20223'	'Non-Hodg lym'	SEZARY-s DISEASE ABDOM
'20224'	'Non-Hodg lym'	SEZARY-s DISEASE AXILLA
'20225'	'Non-Hodg lym'	SEZARY-s DISEASE INGUIN
'20226'	'Non-Hodg lym'	SEZARY-s DISEASE PELVIC
'20227'	'Non-Hodg lym'	SEZARY-s DISEASE SPLEEN
'20228'	'Non-Hodg lym'	SEZARY-s DISEASE MULT
'20270'	'Non-Hodg lym'	PERIPH T CELL LYM XTRNDL (Begin 2007)
'20271'	'Non-Hodg lym'	PERIPH T CELL LYMPH HEAD (Begin 2007)
'20272'	'Non-Hodg lym'	PERIPH T CELL LYM THORAX (Begin 2007)
'20273'	'Non-Hodg lym'	PERIPH T CELL LYM ABDOM (Begin 2007)
'20274'	'Non-Hodg lym'	PERIPH T CELL LYM AXILLA (Begin 2007)
'20275'	'Non-Hodg lym'	PERIPH T CELL LYM INGUIN (Begin 2007)
'20276'	'Non-Hodg lym'	PERIPH T CELL LYM PELVIC (Begin 2007)
'20277'	'Non-Hodg lym'	PERIPH T CELL LYM SPLEEN (Begin 2007)
'20278'	'Non-Hodg lym'	PERIPH T CELL LYM MULTIP (Begin 2007)
'20280'	'Non-Hodg lym'	LYMPHOMA NEC UNSPEC SITE
'20281'	'Non-Hodg lym'	LYMPHOMAS NEC HEAD
'20282'	'Non-Hodg lym'	LYMPHOMAS NEC THORAX
'20283'	'Non-Hodg lym'	LYMPHOMAS NEC ABDOM
'20284'	'Non-Hodg lym'	LYMPHOMAS NEC AXILLA
'20285'	'Non-Hodg lym'	LYMPHOMAS NEC INGUIN
'20286'	'Non-Hodg lym'	LYMPHOMAS NEC PELVIC
'20287'	'Non-Hodg lym'	LYMPHOMAS NEC SPLEEN
'20288'	'Non-Hodg lym'	LYMPHOMAS NEC MULT



'20290'	'Non-Hodg lym'	LYMPHOID MAL NEC UNSPEC
'20291'	'Non-Hodg lym'	LYMPHOID MAL NEC HEAD
'20292'	'Non-Hodg lym'	LYMPHOID MAL NEC THORAX
'20293'	'Non-Hodg lym'	LYMPHOID MAL NEC ABDOM
'20294'	'Non-Hodg lym'	LYMPHOID MAL NEC AXILLA
'20295'	'Non-Hodg lym'	LYMPHOID MAL NEC INGUIN
'20296'	'Non-Hodg lym'	LYMPHOID MAL NEC PELVIC
'20297'	'Non-Hodg lym'	LYMPHOID MAL NEC SPLEEN
'20298'	'Non-Hodg lym'	LYMPHOID MAL NEC MULT
'V1071'	'Non-Hodg lym'	HX-LYMPHOSARCOMA
'V1079'	'Non-Hodg lym'	HX-LYMPHATIC MALIGN NEC
'20240'	'Leukemias'	HAIRY-CELL LEUKEM UNSPEC
'20241'	'Leukemias'	HAIRY-CELL LEUKEM HEAD
'20242'	'Leukemias'	HAIRY-CELL LEUKEM THORAX
'20243'	'Leukemias'	HAIRY-CELL LEUKEM ABDOM
'20244'	'Leukemias'	HAIRY-CELL LEUKEM AXILLA
'20245'	'Leukemias'	HAIRY-CELL LEUKEM INGUIN
'20246'	'Leukemias'	HAIRY-CELL LEUKEM PELVIC
'20247'	'Leukemias'	HAIRY-CELL LEUKEM SPLEEN
'20248'	'Leukemias'	HAIRY-CELL LEUKEM MULT
'2031 '	'Leukemias'	PLASMA CELL LEUKEMIA (Begin 1980, End 1991)
'20310'	'Leukemias'	PLSM CELL LEUK W/O RMSON (Begin 1991)
'20311'	'Leukemias'	PLSM CELL LEUK W RMSON (Begin 1991)
'2040 '	'Leukemias'	ACUTE LYMPHOID LEUKEMIA (Begin 1980, End 1991)
'20400'	'Leukemias'	ACT LYM LEUK W/O RMSION (Begin 1991)
'20401'	'Leukemias'	ACT LYM LEUK W RMSION (Begin 1991)
'2041 '	'Leukemias'	CHR LYMPHOID LEUKEMIA (Begin 1980, End 1991)
'20410'	'Leukemias'	CHR LYM LEUK W/O RMSION (Begin 1991)
'20411'	'Leukemias'	CHR LYM LEUK W RMSION (Begin 1991)
'2042 '	'Leukemias'	SUBAC LYMPHOID LEUKEMIA (Begin 1980, End 1991)
'20420'	'Leukemias'	SBAC LYM LEUK W/O RMSION (Begin 1991)
'20421'	'Leukemias'	SBAC LYM LEUK W RMSION (Begin 1991)
'2048 '	'Leukemias'	LYMPHOID LEUKEMIA NEC (Begin 1980, End 1991)
'20480'	'Leukemias'	OTH LYM LEUK W/O RMSION (Begin 1991)
'20481'	'Leukemias'	OTH LYM LEUK W RMSION (Begin 1991)
'2049 '	'Leukemias'	LYMPHOID LEUKEMIA NOS (Begin 1980, End 1991)
'20490'	'Leukemias'	UNS LYM LEUK W/O RMSION (Begin 1991)
'20491'	'Leukemias'	UNS LYM LEUK W RMSION (Begin 1991)
'2050 '	'Leukemias'	ACUTE MYELOID LEUKEMIA (Begin 1980, End 1991)
'20500'	'Leukemias'	ACT MYL LEUK W/O RMSION (Begin 1991)
'20501'	'Leukemias'	ACT MYL LEUK W RMSION (Begin 1991)
'2051 '	'Leukemias'	CHRONIC MYELOID LEUKEMIA (Begin 1980, End 1991)
'20510'	'Leukemias'	CHR MYL LEUK W/O RMSION (Begin 1991)
'20511'	'Leukemias'	CHR MYL LEUK W RMSION (Begin 1991)

'2052 '	'Leukemias'	SUBACUT MYELOID LEUKEMIA (Begin 1980, End 1991)
'20520'	'Leukemias'	SBAC MYL LEUK W/O RMSION (Begin 1991)
'20521'	'Leukemias'	SBAC MYL LEUK W RMSION (Begin 1991)
'2053 '	'Leukemias'	MYELOID SARCOMA (Begin 1980, End 1991)
'20530'	'Leukemias'	MYL SRCOMA W/O RMSION (Begin 1991)
'20531'	'Leukemias'	MYL SRCOMA W RMSION (Begin 1991)
'2058 '	'Leukemias'	MYELOID LEUKEMIA NEC (Begin 1980, End 1991)
'20580'	'Leukemias'	OTH MYL LEUK W/O RMSION (Begin 1991)
'20581'	'Leukemias'	OTH MYL LEUK W RMSION (Begin 1991)
'2059 '	'Leukemias'	MYELOID LEUKEMIA NOS (Begin 1980, End 1991)
'20590'	'Leukemias'	UNS MYL LEUK W/O RMSION (Begin 1991)
'20591'	'Leukemias'	UNS MYL LEUK W RMSION (Begin 1991)
'2060 '	'Leukemias'	ACUTE MONOCYTIC LEUKEMIA (Begin 1980, End 1991)
'20600'	'Leukemias'	ACT MONO LEUK W/O RMSION (Begin 1991)
'20601'	'Leukemias'	ACT MONO LEUK W RMSION (Begin 1991)
'2061 '	'Leukemias'	CHR MONOCYTIC LEUKEMIA (Begin 1980, End 1991)
'20610'	'Leukemias'	CHR MONO LEUK W/O RMSION (Begin 1991)
'20611'	'Leukemias'	CHR MONO LEUK W RMSION (Begin 1991)
'2062 '	'Leukemias'	SUBAC MONOCYTIC LEUKEMIA (Begin 1980, End 1991)
'20620'	'Leukemias'	SBAC MONO LEUK W/O RMSON (Begin 1991)
'20621'	'Leukemias'	SBAC MONO LEUK W RMSION (Begin 1991)
'2068 '	'Leukemias'	MONOCYTIC LEUKEMIA NEC (Begin 1980, End 1991)
'20680'	'Leukemias'	OTH MONO LEUK W/O RMSION (Begin 1991)
'20681'	'Leukemias'	OTH MONO LEUK W RMSION (Begin 1991)
'2069 '	'Leukemias'	MONOCYTIC LEUKEMIA NOS (Begin 1980, End 1991)
'20690'	'Leukemias'	UNS MONO LEUK W/O RMSION (Begin 1991)
'20691'	'Leukemias'	UNS MONO LEUK W RMSION (Begin 1991)
'2070 '	'Leukemias'	ACUTE ERYTHREMIA (Begin 1980, End 1991)
'20700'	'Leukemias'	ACT ERTH/ERYLK W/O RMSON (Begin 1991)
'20701'	'Leukemias'	ACT ERTH/ERYLK W RMSON (Begin 1991)
'2071 '	'Leukemias'	CHRONIC ERYTHREMIA (Begin 1980, End 1991)
'20710'	'Leukemias'	CHR ERYTHRM W/O REMISION (Begin 1991)
'20711'	'Leukemias'	CHR ERYTHRM W REMISION (Begin 1991)
'2072 '	'Leukemias'	MEGAKARYOCYTIC LEUKEMIA (Begin 1980, End 1991)
'20720'	'Leukemias'	MGKRYCYT LEUK W/O RMSION (Begin 1991)
'20721'	'Leukemias'	MGKRYCYT LEUK W RMSION (Begin 1991)
'2078 '	'Leukemias'	SPECIFIED LEUKEMIA NEC (Begin 1980, End 1991)
'20780'	'Leukemias'	OTH SPF LEUK W/O REMSION (Begin 1991)
'20781'	'Leukemias'	OTH SPF LEUK W REMSION (Begin 1991)
'2080 '	'Leukemias'	ACT LEUK UNS CL W/O RMSN (Begin 1980, End 1991)
'20800'	'Leukemias'	ACT LEUK UNS CL W/O RMSN (Begin 1991)
'20801'	'Leukemias'	ACT LEUK UNS CL W RMSON (Begin 1991)
'2081 '	'Leukemias'	CHRONIC LEUKEMIA NOS (Begin 1980, End 1991)
'20810'	'Leukemias'	CHR LEUK UNS CL W/O RMSN (Begin 1991)

'20811'	'Leukemias'	CHR LEUK UNS CL W RMSON (Begin 1991)
'2082 '	'Leukemias'	SUBACUTE LEUKEMIA NOS (Begin 1980, End 1991)
'20820'	'Leukemias'	SBAC LEUK UNS CL W/O RMS (Begin 1991)
'20821'	'Leukemias'	SBAC LEUK UNS CL W RMSON (Begin 1991)
'2088 '	'Leukemias'	LEUKEMIA-UNSPEC CELL NEC (Begin 1980, End 1991)
'20880'	'Leukemias'	OTH LEUK UNS CL W/O RMSN (Begin 1991)
'20881'	'Leukemias'	OTH LEUK UNS CL W RMSON (Begin 1991)
'2089 '	'Leukemias'	LEUKEMIA-UNSPEC CELL NOS (Begin 1980, End 1991)
'20890'	'Leukemias'	LEUKEMIA NOS W/O REMSION (Begin 1991)
'20891'	'Leukemias'	LEUKEMIA NOS W REMISSION (Begin 1991)
'V1060'	'Leukemias'	HX OF LEUKEMIA NOS
'V1061'	'Leukemias'	HX OF LYMPHOID LEUKEMIA
'V1062'	'Leukemias'	HX OF MYELOID LEUKEMIA
'V1063'	'Leukemias'	HX OF MONOCYTIC LEUKEMIA
'V1069'	'Leukemias'	HX OF LEUKEMIA NEC
'2030 '	'Mult myeloma'	MULTIPLE MYELOMA (Begin 1980, End 1991)
'20300'	'Mult myeloma'	MULT MYELM W/O REMISSION (Begin 1991)
'20301'	'Mult myeloma'	MULT MYELM W REMISSION (Begin 1991)
'2038 '	'Mult myeloma'	IMMUNOPROLIFERAT NEO NEC (Begin 1980, End 1991)
'20380'	'Mult myeloma'	OTH IMNPRFL NPL W/O RMSN (Begin 1991)
'20381'	'Mult myeloma'	OTH IMNPRFL NPL W RMSN (Begin 1991)

## Appendix E2. Medications Used to Indicate Active Cancer Treatment

Any of the following medications administered during sepsis hospitalization or within the preceding 90 days (including outpatient prescriptions) were used as an indicator of active cancer treatment. Medications marked with \* indicate targeted therapies.

Abiraterone, alemtuzumab\*, all-trans retinoic acid, aminogluethimide, anastrozole, arsenic trioxide, asparaginase, axitinib\*, azacitidine, bendamustine, bevacizumab\*, bicalutamide, bleomycin, blinatumomab, bortezomib, bretuximab\*, busulfan, cabazitaxel, capecitabine, carboplatin, carfilzomib, carmustine, cetuximab\*, chlorambucil, cisplatin, cladribine, clofarabine, crizotinib\*, cyclophosphamide, cytarabine, dabrafenib\*, dacarbazine, dactinomycin, dasatinib\*, daunorubicin, decitabine, denileukin diftitox, docetaxel, doxorubicin, enzalutamide, epirubicin, erbulin, erlotinib\*, etoposide, evorlimus\*, examestane, fludarabine, fluorouracil, flutamide, fulvestrant, gemcitabine, gentuzumab ozogamicin\*, goserelin, hydroxyurea, ibrutinib\*, idarubicin, idelalisib\*, ifosfamide, imatinib\*, ipilimumab\*, irinotecan, lapatinib\*, letrozole, leuprolide, mechlorethamine, melphalan, mercaptopurine, methotrexate, mitomycin, mitotane, mitoxantrone, nilotinib\*, nilatumide, nivolumab\*, obinutuzumab\*, oxaliplatin, paclitaxel, panitumumab\*, panobinostat, pazopanib\*, pesasparagase, pemetrexed, pertuzumab\*, pomalidomide, ponatinib\*, porfimer, procarbazine, raloxifene, regorafenib\*, rituximab\*, ruxolitinib\*, soarafenib\*, streptozocin, sunitinib\*, tamoxifen, temozolomide, thalidomide, thioguanine, thiotepa, topotecan, trametinib\*, trastuzumab\*, vemurafenib\*, vinblastine, vincristine, vinorelbine, vorinostat

## Appendix E3. ICD-9-CM Codes Used to Determine Site of Infection

### A. Bone/Joint

ICD-9-CM CODE	SPECIFIC DIAGNOSIS
'0955 '	SYPHILIS OF BONE
'09850'	GONOCOCCAL ARTHRITIS
'09853'	GONOCOCCAL SPONDYLITIS
'09859'	GC INFECT JOINT NEC
'00323'	SALMONELLA ARTHRITIS
'00324'	SALMONELLA OSTEOMYELITIS
'0261 '	STREPTOBACILLARY FEVER
'03682'	MENINGOCOCC ARTHROPATHY
'05671'	ARTHRITIS DUE TO RUBELLA
'7300'	ACUTE OSTEOMYELITIS
'71100'	PYOGEN ARTHRITIS-UNSPEC
'71101'	PYOGEN ARTHRITIS-SHLDER
'71102'	PYOGEN ARTHRITIS-UP/ARM
'71103'	PYOGEN ARTHRITIS-FOREARM
'71104'	PYOGEN ARTHRITIS-HAND
'71105'	PYOGEN ARTHRITIS-PELVIS
'71106'	PYOGEN ARTHRITIS-L/LEG
'71107'	PYOGEN ARTHRITIS-ANKLE
'71108'	PYOGEN ARTHRITIS NEC
'71109'	PYOGEN ARTHRITIS-MULT
'71160'	MYCOTIC ARTHRITIS-UNSPEC
'71161'	MYCOTIC ARTHRITIS-SHLDER
'71162'	MYCOTIC ARTHRITIS-UP/ARM
'71163'	MYCOTIC ARTHRITIS-FOREARM
'71164'	MYCOTIC ARTHRITIS-HAND
'71165'	MYCOTIC ARTHRITIS-PELVIS
'71166'	MYCOTIC ARTHRITIS-L/LEG
'71167'	MYCOTIC ARTHRITIS-ANKLE
'71168'	MYCOTIC ARTHRITIS NEC
'71169'	MYCOTIC ARTHRITIS-MULT
'71170'	HELMINTH ARTHRITIS-UNSPEC
'71171'	HELMINTH ARTHRITIS-SHLDER
'71172'	HELMINTH ARTHRITIS-UP/ARM
'71173'	HELMINTH ARTHRITIS-FOREARM
'71174'	HELMINTH ARTHRITIS-HAND
'71175'	HELMINTH ARTHRITIS-PELVIS
'71176'	HELMINTH ARTHRITIS-L/LEG
'71177'	HELMINTH ARTHRITIS-ANKLE
'71178'	HELMINTH ARTHRITIS NEC
'71179'	HELMINTH ARTHRITIS-MULT

'71180'	INF ARTHRITIS NEC-UNSPEC
'71181'	INF ARTHRITIS NEC-SHLDER
'71182'	INF ARTHRITIS NEC-UP/ARM
'71183'	INF ARTHRIT NEC-FOREARM
'71184'	INF ARTHRITIS NEC-HAND
'71185'	INF ARTHRITIS NEC-PELVIS
'71186'	INF ARTHRITIS NEC-L/LEG
'71187'	INF ARTHRITIS NEC-ANKLE
'71188'	INF ARTHRIT NEC-OTH SITE
'71189'	INF ARTHRITIS NEC-MULT
'71190'	INF ARTHRITIS NOS-UNSPEC
'71191'	INF ARTHRITIS NOS-SHLDER
'71192'	INF ARTHRITIS NOS-UP/ARM
'71193'	INF ARTHRIT NOS-FOREARM
'71194'	INF ARTHRIT NOS-HAND
'71195'	INF ARTHRIT NOS-PELVIS
'71196'	INF ARTHRIT NOS-L/LEG
'71197'	INF ARTHRIT NOS-ANKLE
'71198'	INF ARTHRIT NOS-OTH SITE
'71199'	INF ARTHRITIS NOS-MULT
'73000'	AC OSTEOMYELITIS-UNSPEC
'73001'	AC OSTEOMYELITIS-SHLDER
'73002'	AC OSTEOMYELITIS-UP/ARM
'73003'	AC OSTEOMYELITIS-FOREARM
'73004'	AC OSTEOMYELITIS-HAND
'73005'	AC OSTEOMYELITIS-PELVIS
'73006'	AC OSTEOMYELITIS-L/LEG
'73007'	AC OSTEOMYELITIS-ANKLE
'73008'	AC OSTEOMYELITIS NEC
'73009'	AC OSTEOMYELITIS-MULT
'73010'	CHR OSTEOMYELITIS-UNSP
'73011'	CHR OSTEOMYELIT-SHLDER
'73012'	CHR OSTEOMYELIT-UP/ARM
'73013'	CHR OSTEOMYELIT-FOREARM
'73014'	CHR OSTEOMYELIT-HAND
'73015'	CHR OSTEOMYELIT-PELVIS
'73016'	CHR OSTEOMYELIT-L/LEG
'73017'	CHR OSTEOMYELIT-ANKLE
'73018'	CHR OSTEOMYELIT NEC
'73019'	CHR OSTEOMYELIT-MULT
'73020'	OSTEOMYELITIS NOS-UNSPEC
'73021'	OSTEOMYELITIS NOS-SHLDER
'73022'	OSTEOMYELITIS NOS-UP/ARM
'73023'	OSTEOMYELIT NOS-FOREARM

'73024'	OSTEOMYELITIS NOS-HAND
'73025'	OSTEOMYELITIS NOS-PELVIS
'73026'	OSTEOMYELITIS NOS-L/LEG
'73027'	OSTEOMYELITIS NOS-ANKLE
'73028'	OSTEOMYELIT NOS-OTH SITE
'73029'	OSTEOMYELITIS NOS-MULT
'73030'	PERIOSTITIS-UNSPEC
'73031'	PERIOSTITIS-SHLDER
'73032'	PERIOSTITIS-UP/ARM
'73033'	PERIOSTITIS-FOREARM
'73034'	PERIOSTITIS-HAND
'73035'	PERIOSTITIS-PELVIS
'73036'	PERIOSTITIS-L/LEG
'73037'	PERIOSTITIS-ANKLE
'73038'	PERIOSTITIS NEC
'73039'	PERIOSTITIS-MULT
'73080'	BONE INFECT NEC-UNSPEC
'73081'	BONE INFECT NEC-SHLDER
'73082'	BONE INFECT NEC-UP/ARM
'73083'	BONE INFECT NEC-FOREARM
'73084'	BONE INFECT NEC-HAND
'73085'	BONE INFECT NEC-PELVIS
'73086'	BONE INFECT NEC-L/LEG
'73087'	BONE INFECT NEC-ANKLE
'73088'	BONE INFECT NEC-OTH SITE
'73089'	BONE INFECT NEC-MULT
'73090'	BONE INFEC NOS-UNSP SITE
'73091'	BONE INFECT NOS-SHLDER
'73092'	BONE INFECT NOS-UP/ARM
'73093'	BONE INFECT NOS-FOREARM
'73094'	BONE INFECT NOS-HAND
'73095'	BONE INFECT NOS-PELVIS
'73096'	BONE INFECT NOS-L/LEG
'73097'	BONE INFECT NOS-ANKLE
'73098'	BONE INFECT NOS-OTH SITE
'73099'	BONE INFECT NOS-MULT
'99666'	REACT-INTER JOINT PROST (Begin 1989)
'99667'	REACT-OTH INT ORTHO DEV (Begin 1989)

## B. Central Nervous System

<b>ICD-9-CM CODE</b>	<b>SPECIFIC DIAGNOSIS</b>
'09181'	ACUTE SYPHIL MENINGITIS
'0941 '	GENERAL PARESIS
'09481'	SYPHILITIC ENCEPHALITIS
'09489'	NEUROSYPHILIS NEC
'0949 '	NEUROSYPHILIS NOS
'09882'	GONOCOCCAL MENINGITIS
'00321'	SALMONELLA MENINGITIS
'0360 '	MENINGOCOCCAL MENINGITIS
'0470 '	COXSACKIE VIRUS MENING
'0471 '	ECHO VIRUS MENINGITIS
'0478 '	VIRAL MENINGITIS NEC
'0479 '	VIRAL MENINGITIS NOS
'0490 '	LYMPHOCYTIC CHORIOMENING
'0491 '	ADENOVIRAL MENINGITIS
'0530 '	HERPES ZOSTER MENINGITIS
'05472'	H SIMPLEX MENINGITIS
'0721 '	MUMPS MENINGITIS
'10081'	LEPTOSPIRAL MENINGITIS
'11283'	CANDIDAL MENINGITIS
'1142 '	COCCIDIOIDAL MENINGITIS
'11501'	HISTOPLASM CAPSUL MENING
'11511'	HISTOPLASM DUBOIS MENING
'11591'	HISTOPLASMOSIS MENINGIT
'3200 '	HEMOPHILUS MENINGITIS
'3201 '	PNEUMOCOCCAL MENINGITIS
'3202 '	STREPTOCOCCAL MENINGITIS
'3203 '	STAPHYLOCOCC MENINGITIS
'3207 '	MENING IN OTH BACT DIS
'3208 '	BACTERIAL MENINGITIS NEC (Begin 1980, End 1992)
'32081'	ANAEROBIC MENINGITIS (Begin 1992)
'32082'	GRAM NEG MENINGITIS NEC (Begin 1992)
'32089'	OTH BACTER MENINGITIS (Begin 1992)
'3209 '	BACTERIAL MENINGITIS NOS
'3210 '	CRYPTOCOCCAL MENINGITIS
'3211 '	MENING IN OTH FUNGAL DIS
'3212 '	MENING IN OTH VIRAL DIS
'3213 '	TRYPANOSOMIASIS MENINGIT
'3214 '	MENINGIT D/T SARCOIDOSIS
'3218 '	MENING IN OTH NONBAC DIS
'3220 '	NONPYOGENIC MENINGITIS
'3221 '	EOSINOPHILIC MENINGITIS
'3222 '	CHRONIC MENINGITIS
'3229 '	MENINGITIS NOS



'0361 '	MENINGOCOCC ENCEPHALITIS
'0462 '	SUBAC SCLEROS PANENCEPH
'0498 '	VIRAL ENCEPHALITIS NEC
'0499 '	VIRAL ENCEPHALITIS NOS
'0520 '	POSTVARICELLA ENCEPHALIT
'0543 '	HERPETIC ENCEPHALITIS
'0550 '	POSTMEASLES ENCEPHALITIS
'05601'	RUBELLA ENCEPHALITIS
'05821'	HUMAN HERPESVIR 6 ENCEPH (Begin 2007)
'05829'	HUMAN HERPESVR ENCPH NEC (Begin 2007)
'0620 '	JAPANESE ENCEPHALITIS
'0621 '	WEST EQUINE ENCEPHALITIS
'0622 '	EAST EQUINE ENCEPHALITIS
'0623 '	ST LOUIS ENCEPHALITIS
'0624 '	AUSTRALIAN ENCEPHALITIS
'0625 '	CALIFORNIA ENCEPHALITIS
'0628 '	MOSQUIT-BORNE ENCEPH NEC
'0629 '	MOSQUIT-BORNE ENCEPH NOS
'0630 '	RUSSIA SPR-SUMMER ENCEPH
'0631 '	LOUPING ILL
'0632 '	CENT EUROPE ENCEPHALITIS
'0638 '	TICK-BORNE ENCEPH NEC
'0639 '	TICK-BORNE ENCEPH NOS
'064 '	VIR ENCEPH ARTHROPOD NEC
'0662 '	VENEZUELAN EQUINE FEVER
'0722 '	MUMPS ENCEPHALITIS
'1300 '	TOXOPLASM MENINGOENCEPH
'1390 '	LATE EFF VIRAL ENCEPHAL
'3230 '	ENCEPHALIT IN VIRAL DIS
'32301'	ENCEPH/ENCEPHMYE OTH DIS (Begin 2006)
'32302'	MYELITIS-OTH VIRAL DIS (Begin 2006)
'3231 '	RICKETTSIAL ENCEPHALITIS
'3232 '	PROTOZOAL ENCEPHALITIS
'3234 '	OTH ENCEPHALIT D/T INFEC
'32341'	ENCEPH/MYELITIS-OTH INF (Begin 2006)
'32342'	MYELITIS D/T OTH INFECT (Begin 2006)
'32351'	ENCEPH/MYEL FOLWG IMMUNE (Begin 2006)
'32352'	MYELITIS FOLLWG IMMUNE (Begin 2006)
'3236 '	POSTINFECT ENCEPHALITIS
'32361'	INF AC DIS ENCEPHALOMYEL (Begin 2006)
'32362'	POSTINF ENCEPHALITIS NEC (Begin 2006)
'32363'	POSTINFECTIOUS MYELITIS (Begin 2006)
'3238 '	ENCEPHALITIS NEC
'32381'	ENCEPH & ENCEPHLALO NEC (Begin 2006)

'32382'	MYELITIS CAUSE NEC (Begin 2006)
'3239 '	ENCEPHALITIS NOS
'34120'	ACUTE MYELITIS NOS (Begin 2006)
'34121'	ACUTE MYELITIS OTH COND (Begin 2006)
'0468 '	CNS SLOW VIRUS INFEC NEC
'0469 '	CNS SLOW VIRUS INFEC NOS
'048 '	OTH ENTEROVIRAL CNS DIS
'3240 '	INTRACRANIAL ABSCESS
'3241 '	INTRASPINAL ABSCESS
'3249 '	CNS ABSCESS NOS
'326 '	LATE EFF CNS ABSCESS

### C. Genitourinary

ICD-9-CM CODE	SPECIFIC DIAGNOSIS
'1122 '	CANDIDIAS UROGENITAL NEC
'0910 '	PRIMARY GENITAL SYPHILIS
'0911 '	PRIMARY ANAL SYPHILIS
'0912 '	PRIMARY SYPHILIS NEC
'0954 '	SYPHILIS OF KIDNEY
'0980 '	ACUTE GC INFECT LOWER GU
'09810'	GC (ACUTE) UPPER GU NOS
'09811'	GC CYSTITIS (ACUTE)
'09812'	GC PROSTATITIS (ACUTE)
'09813'	GC ORCHITIS (ACUTE)
'09814'	GC SEM VESICULIT (ACUTE)
'09819'	GC (ACUTE) UPPER GU NEC
'0982 '	CHR GC INFECT LOWER GU
'09830'	CHR GC UPPER GU NOS
'09831'	GC CYSTITIS- CHRONIC
'09832'	GC PROSTATITIS- CHRONIC
'09833'	GC ORCHITIS- CHRONIC
'09834'	GC SEM VESICULITIS- CHR
'09839'	CHR GC UPPER GU NEC
'0987 '	GC INFECT ANUS & RECTUM
'0990 '	CHANCROID
'0991 '	LYMPHOGRANULOMA VENEREUM
'0992 '	GRANULOMA INGUINALE
'0994 '	NONGONOCOCC URETHRIT NEC (Begin 1980, End 1992)
'09940'	UNSPEC URETHRITIS (Begin 1992)
'09941'	CHLAMYDIA URETHRITIS (Begin 1992)
'09949'	NONGONOCOCC URETHRIT NEC (Begin 1992)
'09952'	CHLAMYDIA-ANUS RECTUM (Begin 1992)
'09953'	CHLAMYDIA-LOWER GU (Begin 1992)

'09954'	CHLAMYDIA-OTHER GU (Begin 1992)
'09955'	CHLAMYDIA-UNSPEC GU (Begin 1992)
'0998 '	VENEREAL DISEASE NEC
'0999 '	VENEREAL DISEASE NOS
'03284'	DIPHThERITIC CYSTITIS
'59000'	CHR PYELONEPHRITIS NOS
'59001'	CHR PYELONEPH W MED NECR
'5901'	ACUTE PYELONEPHRITIS
'59010'	AC PYELONEPHRITIS NOS
'59011'	AC PYELONEPHR W MED NECR
'5902 '	RENAL/PERIRENAL ABSCESS
'5903 '	PYELOURETERITIS CYSTICA
'59080'	PYELONEPHRITIS NOS
'59081'	PYELONEPHRIT IN OTH DIS
'5909 '	INFECTION OF KIDNEY NOS
'5950 '	ACUTE CYSTITIS
'5951 '	CHR INTERSTIT CYSTITIS
'5952 '	CHRONIC CYSTITIS NEC
'5953 '	TRIGONITIS
'5954 '	CYSTITIS IN OTH DIS
'59581'	CYSTITIS CYSTICA
'59589'	CYSTITIS NEC
'5959 '	CYSTITIS NOS
'5970 '	URETHRAL ABSCESS
'59780'	URETHRITIS NOS
'59781'	URETHRAL SYNDROME NOS
'59789'	URETHRITIS NEC
'5990 '	URIN TRACT INFECTION NOS
'6010 '	ACUTE PROSTATITIS
'6011 '	CHRONIC PROSTATITIS
'6012 '	ABSCESS OF PROSTATE
'6013 '	PROSTATOCYSTITIS
'6014 '	PROSTATITIS IN OTH DIS
'6018 '	PROSTATIC INFLAM DIS NEC
'6019 '	PROSTATITIS NOS
'6031 '	INFECTED HYDROCELE
'6040 '	ORCHITIS WITH ABSCESS
'60490'	ORCHITIS/EPIDIDYMIT NOS
'60491'	ORCHITIS IN OTH DISEASE
'60499'	ORCHITIS/EPIDIDYMIT NEC
'6071 '	BALANOPOSTHITIS
'6072 '	INFLAM DIS- PENIS NEC
'6080 '	SEMINAL VESICULITIS
'6084 '	MALE GEN INFLAM DIS NEC

'99664'	REACT-INDWELL URIN CATH (Begin 1989)
'99665'	REACT-OTH GENITOURIN DEV (Begin 1989)

#### D. Intra-Abdominal

ICD-9-CM CODE	SPECIFIC DIAGNOSIS
'11285'	CANDIDAL ENTERITIS (Begin 1992)
'0952 '	SYPHILITIC PERITONITIS
'0953 '	SYPHILIS OF LIVER
'09886'	GONOCOCCAL PERITONITIS
'09956'	CHLAMYDIA-PERITONEUM (Begin 1992)
'0010 '	CHOLERA D/T VIB CHOLERAЕ
'0011 '	CHOLERA D/T VIB EL TOR
'0019 '	CHOLERA NOS
'0020 '	TYPHOID FEVER
'0021 '	PARATYPHOID FEVER A
'0022 '	PARATYPHOID FEVER B
'0023 '	PARATYPHOID FEVER C
'0029 '	PARATYPHOID FEVER NOS
'0030 '	SALMONELLA ENTERITIS
'00320'	LOCAL SALMONELLA INF NOS
'00329'	LOCAL SALMONELLA INF NEC
'0038 '	SALMONELLA INFECTION NEC
'0039 '	SALMONELLA INFECTION NOS
'0040 '	SHIGELLA DYSENTERIAE
'0041 '	SHIGELLA FLEXNERI
'0042 '	SHIGELLA BOYDII
'0043 '	SHIGELLA SONNEI
'0048 '	SHIGELLA INFECTION NEC
'0049 '	SHIGELLOSIS NOS
'0050 '	STAPH FOOD POISONING
'0051 '	BOTULISM
'0052 '	FOOD POIS D/T C. PERFRIN
'0053 '	FOOD POIS: CLOSTRID NEC
'0054 '	FOOD POIS: V. PARAHAEM
'0058 '	BACT FOOD POISONING NEC (End 1995)
'00581'	FOOD POISONING VIBRIO (Begin 1995)
'00589'	OTH BACT FOOD POISONING (Begin 1995)
'0059 '	FOOD POISONING NOS
'0060 '	AC AMEBIASIS W/O ABSCESS
'0061 '	CHR AMEBIASIS W/O ABSCES
'0062 '	AMEBIC NONDYSENT COLITIS
'0063 '	AMEBIC LIVER ABSCESS

'0064 '	AMEBIC LUNG ABSCESS
'0065 '	AMEBIC BRAIN ABSCESS
'0066 '	AMEBIC SKIN ULCERATION
'0068 '	AMEBIC INFECTION NEC
'0069 '	AMEBIASIS NOS
'0070 '	BALANTIDIASIS
'0071 '	GIARDIASIS
'0072 '	COCCIDIOSIS
'0073 '	INTEST TRICHOMONIASIS
'0074 '	OT PROTOZ INTEST DX- CRYP (Begin 1997)
'0075 '	CYCLOSPORIASIS (Begin 2000)
'0078 '	PROTOZOAL INTEST DIS NEC
'0079 '	PROTOZOAL INTEST DIS NOS
'0080 '	E. COLI ENTERITIS (Begin 1980, End 1992)
'00800'	E. COLI ENTERITIS-NOS (Begin 1992)
'00801'	E. COLI ENTERITIS-PATH (Begin 1992)
'00802'	E. COLI ENTERITIS-TOX (Begin 1992)
'00803'	E. COLI ENTERITIS-INVAS (Begin 1992)
'00804'	E. COLI ENTERITIS-HEMOR (Begin 1992)
'00809'	E. COLI ENTERITIS-OTHER (Begin 1992)
'0081 '	ARIZONA ENTERITIS
'0082 '	AEROBACTER ENTERITIS
'0083 '	PROTEUS ENTERITIS
'00841'	STAPHYLOCOCC ENTERITIS
'00842'	PSEUDOMONAS ENTERITIS
'00843'	CAMPYLOBACTER (Begin 1992)
'00844'	YERSINIA (Begin 1992)
'00845'	CLOSTRIDIUM DIF (Begin 1992)
'00846'	OTHER ANAEROBES (Begin 1992)
'00847'	OTH GRAM NEG BACT (Begin 1992)
'00849'	BACTERIAL ENTERITIS NEC
'0085 '	BACTERIAL ENTERITIS NOS
'0086 '	VIRAL ENTERITIS NEC (Begin 1980, End 1992)
'00861'	ROTAVIRUS ENTERITIS (Begin 1992)
'00862'	ADENOVIR ENTERITIS (Begin 1992)
'00863'	NORWALK VIR ENTERITIS (Begin 1992)
'00864'	SML ROUND VIR ENTERITIS (Begin 1992)
'00865'	CALCIVIRUS ENTERITIS (Begin 1992)
'00866'	ASTROVIRUS ENTERITIS (Begin 1992)
'00867'	ENTERITIS NEC (Begin 1992)
'00869'	ENTERITIS NOS (Begin 1992)
'0088 '	VIRAL ENTERITIS NOS
'0090 '	INFECTIOUS ENTERITIS NOS
'0091 '	ENTERITIS OF INFECT ORIG

'0092 '	INFECTIOUS DIARRHEA NOS
'0093 '	DIARRHEA OF INFECT ORIG
'0211 '	ENTERIC TULAREMIA
'0222 '	GASTROINTESTINAL ANTHRAX
'5400 '	AC APPEND W PERITONITIS
'5401 '	ABSCESS OF APPENDIX
'5409 '	ACUTE APPENDICITIS NOS
'541 '	APPENDICITIS NOS
'542 '	OTHER APPENDICITIS
'55000'	UNILAT ING HERNIA W GANG
'55001'	RECUR UNIL ING HERN-GANG
'55002'	BILAT ING HERNIA W GANG
'55003'	RECUR BIL ING HERN-GANG
'55100'	UNIL FEMORAL HERN W GANG
'55101'	REC UNIL FEM HERN W GANG
'55102'	BILAT FEM HERN W GANG
'55103'	RECUR BIL FEM HERN-GANG
'5511 '	UMBILICAL HERNIA W GANGR
'55120'	GANGR VENTRAL HERNIA NOS
'55121'	GANGR INCISIONAL HERNIA
'55129'	GANG VENTRAL HERNIA NEC
'5513 '	DIAPHRAGM HERNIA W GANGR
'5518 '	HERNIA- SITE NEC W GANGR
'5519 '	HERNIA- SITE NOS W GANGR
'56201'	DVRTCLI SML INT (W/O HMRG) (Begin 1980)
'56203'	DVRTCLI SML INT W HMRHG (Begin 1991)
'56211'	DVRTCLI COLON (W/O HMRHG) (Begin 1980)
'56213'	DVRTCLI COLON W HMRHG (Begin 1991)
'566 '	ANAL & RECTAL ABSCESS
'03283'	DIPHTheritic PERITONITIS
'5670 '	PERITONITIS IN INFEC DIS
'5671 '	PNEUMOCOCCAL PERITONITIS
'5672 '	SUPPURAT PERITONITIS NEC (End 2005)
'56721'	PERITONITIS (ACUTE) GEN (Begin 2005)
'56722'	PERITONEAL ABSCESS (Begin 2005)
'56723'	SPONTAN BACT PERITONITIS (Begin 2005)
'56729'	SUPPURAT PERITONITIS NEC (Begin 2005)
'56738'	RETROPERITON ABSCESS NEC (Begin 2005)
'56739'	RETROPERITON INFECT NEC (Begin 2005)
'5678 '	PERITONITIS NEC (End 2005)
'56781'	CHOLEPERITONITIS (Begin 2005)
'56789'	PERITONITIS NEC (Begin 2005)
'5679 '	PERITONITIS NOS
'5695 '	INTESTINAL ABSCESS

'57400'	CHOLELITH W AC CHOLECYST
'57401'	CHOLELITH/AC GB INF-OBST
'57410'	CHOLELITH W CHOLECYS NEC
'57411'	CHOLELITH/GB INF NEC-OBS
'57421'	CHOLELITHIAS NOS W OBSTR
'57430'	CHOLEDOCHOLITH/AC GB INF
'57431'	CHOLEDOCHLITH/AC GB-OBST
'57440'	CHOLEDOCHLITH/GB INF NEC
'57441'	CHOLEDOCHLITH/GB NEC-OBS
'57451'	CHOLEDOCHLITH NOS W OBST
'57460'	CHOLELITH W/ AC W/O OBS (Begin 1996)
'57461'	CHOLELITH W/ AC W/ OBS (Begin 1996)
'57470'	CHOLELITH W/ OT W/O OBS (Begin 1996)
'57471'	CHOLELITH W/ OT W/ OBS (Begin 1996)
'57480'	CHOLELIT AC/CHR W/O OBS (Begin 1996)
'57481'	CHOLELIT AC/CHR W/ OBS (Begin 1996)
'5750 '	ACUTE CHOLECYSTITIS
'5751 '	CHOLECYSTITIS NEC (End 1996)
'57510'	CHOLECYSTITIS NOS (Begin 1996)
'57511'	CHRON CHOLECYSTITIS (Begin 1996)
'57512'	AC/CHR CHOLECYSTITIS (Begin 1996)
'5752 '	OBSTRUCTION GALLBLADDER
'5754 '	PERFORATION GALLBLADDER
'5755 '	FISTULA OF GALLBLADDER
'5761 '	CHOLANGITIS
'5762 '	OBSTRUCTION OF BILE DUCT
'5763 '	PERFORATION OF BILE DUCT
'5764 '	FISTULA OF BILE DUCT
'5720 '	ABSCCESS OF LIVER
'5721 '	PORTAL PYEMIA
'56983'	PERFORATION OF INTESTINE
'99668'	INFXN PERITON DIALY CATHET (Begin 1998)

### **E. Obstetric/Gynecologic**

<b>ICD-9-CM CODE</b>	<b>SPECIFIC DIAGNOSIS</b>
'09815'	GC CERVICITIS (ACUTE)
'09816'	GC ENDOMETRITIS (ACUTE)
'09817'	ACUTE GC SALPINGITIS
'09835'	GC CERVICITIS- CHRONIC
'09836'	GC ENDOMETRITIS- CHRONIC
'09837'	GC SALPINGITIS (CHRONIC)
'6140 '	AC SALPINGO-OOPHORITIS
'6141 '	CHR SALPINGO-OOPHORITIS

'6142'	SALPINGO-OOPHORITIS NOS
'6143'	ACUTE PARAMETRITIS
'6144'	CHRONIC PARAMETRITIS
'6145'	AC PELV PERITONITIS-FEM
'6146'	FEM PELVIC PERITON ADHES
'6147'	CHR PELV PERITON NEC-FEM
'6148'	FEM PELV INFLAM DIS NEC
'6149'	FEM PELV INFLAM DIS NOS
'6150'	AC UTERINE INFLAMMATION
'6151'	CHR UTERINE INFLAMMATION
'6159'	UTERINE INFLAM DIS NOS
'6160'	CERVICITIS
'61610'	VAGINITIS NOS
'61611'	VAGINITIS IN OTH DISEASE
'6162'	BARTHOLIN-s GLAND CYST
'6163'	BARTHOLIN-s GLND ABSCESS
'6164'	ABSCESS OF VULVA NEC
'61650'	ULCERATION OF VULVA NOS
'61651'	VULVAR ULCER IN OTH DIS
'6168'	FEMALE GEN INFLAM NEC
'61681'	MUCOSITIS CERV
'61689'	INFLM CERV
'6169'	FEMALE GEN INFLAM NOS
'63700'	ABORT NOS W PEL INF-UNSP
'63701'	ABORT NOS W PEL INF-INC
'63702'	ABORT NOS W PEL INF-COMP
'6380'	ATTEM ABORT W PELVIC INF
'6390'	POSTABORTION GU INFECT
'64660'	GU INFECT IN PREG-UNSPEC
'64661'	GU INFECTION-DELIVERED
'64662'	GU INFECTION-DELIV W P/P
'64663'	GU INFECTION-ANTEPARTUM
'64664'	GU INFECTION-POSTPARTUM
'64700'	SYPHILIS IN PREG-UNSPEC
'64701'	SYPHILIS-DELIVERED
'64702'	SYPHILIS-DELIVERED W P/P
'64703'	SYPHILIS-ANTEPARTUM
'64704'	SYPHILIS-POSTPARTUM
'64710'	GONORRHEA IN PREG-UNSPEC
'64711'	GONORRHEA-DELIVERED
'64712'	GONORRHEA-DELIVER W P/P
'64713'	GONORRHEA-ANTEPARTUM
'64714'	GONORRHEA-POSTPARTUM
'64720'	OTHER VD IN PREG-UNSPEC



'64721'	OTHER VD-DELIVERED
'64722'	OTHER VD-DELIVERED W P/P
'64723'	OTHER VD-ANTEPARTUM
'64724'	OTHER VD-POSTPARTUM
'64730'	TB IN PREG-UNSPECIFIED
'64731'	TUBERCULOSIS-DELIVERED
'64732'	TUBERCULOSIS-DELIV W P/P
'64733'	TUBERCULOSIS-ANTEPARTUM
'64734'	TUBERCULOSIS-POSTPARTUM
'64740'	MALARIA IN PREG-UNSPEC
'64741'	MALARIA-DELIVERED
'64742'	MALARIA-DELIVERED W P/P
'64743'	MALARIA-ANTEPARTUM
'64744'	MALARIA-POSTPARTUM
'64781'	INFECT DIS NEC-DELIVERED
'64782'	INFECT DIS NEC-DEL W P/P
'64783'	INFECT DIS NEC-ANTEPART
'64784'	INFECT DIS NEC-POSTPART
'64790'	INFECT IN PREG NOS-UNSP
'64791'	INFECT NOS-DELIVERED
'64792'	INFECT NOS-DELIVER W P/P
'64793'	INFECT NOS-ANTEPARTUM
'64794'	INFECT NOS-POSTPARTUM
'67000'	MAJOR PUERP INFECT-UNSP (Begin 1991)
'67002'	MAJOR PUERP INF-DEL P/P (Begin 1991)
'67004'	MAJOR PUERP INF-POSTPART (Begin 1991)
'67330'	OB PYEMIC EMBOL-UNSPEC
'67331'	OB PYEMIC EMBOL-DELIVER
'67332'	OB PYEM EMBOL-DEL W P/P
'67333'	OB PYEMIC EMBOL-ANTEPART
'67334'	OB PYEMIC EMBOL-POSTPART
'67500'	INFECT NIPPLE PREG-UNSP
'67501'	INFECT NIPPLE-DELIVERED
'67502'	INFECT NIPPLE-DEL W P/P
'67503'	INFECT NIPPLE-ANTEPARTUM
'67504'	INFECT NIPPLE-POSTPARTUM
'67510'	BREAST ABSCESS PREG-UNSP
'67511'	BREAST ABSCESS-DELIVERED
'67512'	BREAST ABSCESS-DEL W P/P
'67513'	BREAST ABSCESS-ANTEPART
'67514'	BREAST ABSCESS-POSTPART
'67520'	MASTITIS IN PREG-UNSPEC
'67521'	MASTITIS-DELIVERED
'67522'	MASTITIS-DELIV W P/P

'67523'	MASTITIS-ANTEPARTUM
'67524'	MASTITIS-POSTPARTUM
'67580'	BREAST INF PREG NEC-UNSP
'67581'	BREAST INFECT NEC-DELIV
'67582'	BREAST INF NEC-DEL W P/P
'67583'	BREAST INF NEC-ANTEPART
'67584'	BREAST INF NEC-POSTPART
'67590'	BREAST INF PREG NOS-UNSP
'67591'	BREAST INFECT NOS-DELIV
'67592'	BREAST INF NOS-DEL W P/P
'67593'	BREAST INF NOS-ANTEPART
'67594'	BREAST INF NOS-POSTPART

### **F. Septicemia**

<b>ICD-9-CM CODE</b>	<b>SPECIFIC DIAGNOSIS</b>
'0031 '	SALMONELLA SEPTICEMIA
'0202 '	SEPTICEMIC PLAGUE
'0223 '	ANTHRAX SEPTICEMIA
'0362 '	MENINGOCOCCEMIA
'0380 '	STREPTOCOCCAL SEPTICEMIA
'0381 '	STAPHYLOCOCC SEPTICEMIA (End 1997)
'03810'	STAPH SEPTICEMIA- UNSPEC (Begin 1997)
'03811'	STAPH AUREUS SEPTICEMIA (Begin 1997)
'03819'	OT STAPH SEPTICEMIA (Begin 1997)
'0382 '	PNEUMOCOCCAL SEPTICEMIA
'0383 '	ANAEROBIC SEPTICEMIA
'03840'	GRAM-NEG SEPTICEMIA NOS
'03841'	H. INFLUENAE SEPTICEMIA
'03842'	E COLI SEPTICEMIA
'03843'	PSEUDOMONAS SEPTICEMIA
'03844'	SERRATIA SEPTICEMIA
'03849'	GRAM-NEG SEPTICEMIA NEC
'0388 '	SEPTICEMIA NEC
'0389 '	SEPTICEMIA NOS
'0545 '	HERPETIC SEPTICEMIA
'449 '	SEPTIC ARTERIAL EMBOLISM (Begin 2007)
'7907 '	BACTEREMIA NOS

### **G. Pulmonary**

<b>ICD-9-CM CODE</b>	<b>SPECIFIC DIAGNOSIS</b>
'0951 '	SYPHILIS OF LUNG
'00322'	SALMONELLA PNEUMONIA
'0203 '	PRIMARY PNEUMONIC PLAGUE

'0204'	SECONDARY PNEUMON PLAGUE
'0205'	PNEUMONIC PLAGUE NOS
'0212'	PULMONARY TULAREMIA
'0221'	PULMONARY ANTHRAX
'0310'	PULMONARY MYCOBACTERIA
'0391'	PULMONARY ACTINOMYCOSIS
'0521'	VARICELLA PNEUMONITIS
'0551'	POSTMEASLES PNEUMONIA
'0730'	ORNITHOSIS PNEUMONIA
'0830'	Q FEVER
'1124'	CANDIDIASIS OF LUNG
'1140'	PRIMARY COCCIDIOIDOMYCOSIS
'1144'	CHRONIC PULMON COCCIDIOIDOMYCOSIS (Begin 1993)
'1145'	UNSPEC PULMON COCCIDIOIDOMYCOSIS (Begin 1993)
'11505'	HISTOPLASM CAPS PNEUMON
'11515'	HISTOPLASM DUB PNEUMONIA
'11595'	HISTOPLASMOSIS PNEUMONIA
'1304'	TOXOPLASMA PNEUMONITIS
'1363'	PNEUMOCYSTOSIS
'4800'	ADENOVIRAL PNEUMONIA
'4801'	RESP SYNCYT VIRAL PNEUM
'4802'	PARINFLUENZA VIRAL PNEUM
'4803'	PNEUMONIA DUE TO SARS-ASSOCIATED CORONAVIRUS (Begin 2003)
'4808'	VIRAL PNEUMONIA NEC
'4809'	VIRAL PNEUMONIA NOS
'481'	PNEUMOCOCCAL PNEUMONIA
'482'	OTHER BACTERIAL PNEUMONIA
'4820'	K. PNEUMONIAE PNEUMONIA
'4821'	PSEUDOMONAL PNEUMONIA
'4822'	H.INFLUENZAE PNEUMONIA
'4823'	STREPTOCOCCAL PNEUMONIA (Begin 1980, End 1992)
'48230'	STREP PNEUMONIA UNSPEC (Begin 1992)
'48231'	GRP A STREP PNEUMONIA (Begin 1992)
'48232'	GRP B STREP PNEUMONIA (Begin 1992)
'48239'	OTH STREP PNEUMONIA (Begin 1992)
'4824'	STAPHYLOCOCCAL PNEUMONIA (End 1998)
'48240'	STAPH PNEUMONIA UNSP (Begin 1998)
'48241'	STAPH AUREUS PNEUMON (Begin 1998)
'48249'	STAPH PNEUMON OTH (Begin 1998)
'4828'	BACTERIAL PNEUMONIA NEC (Begin 1980, End 1992)
'48281'	ANAEROBIC PNEUMONIA (Begin 1992)
'48282'	E COLI PNEUMONIA (Begin 1992)
'48283'	OTH GRAM NEG PNEUMONIA (Begin 1992)
'48284'	LEGIONNAIRES DX (Begin 1997)

'48289'	BACT PNEUMONIA NEC (Begin 1992)
'4829 '	BACTERIAL PNEUMONIA NOS
'483 '	PNEUMONIA: ORGANISM NEC (Begin 1980, End 1992)
'4830 '	MYCOPLASMA PNEUMONIA (Begin 1992)
'4831 '	CHLAMYDIA PNEUMONIA (Begin 1996)
'4838 '	OTH SPEC ORG PNEUMONIA (Begin 1992)
'4841 '	PNEUM W CYTOMEG INCL DIS
'4843 '	PNEUMONIA IN WHOOP COUGH
'4845 '	PNEUMONIA IN ANTHRAX
'4846 '	PNEUM IN ASPERGILLOSIS
'4847 '	PNEUM IN OTH SYS MYCOSES
'4848 '	PNEUM IN INFECT DIS NEC
'485 '	BRONCOPNEUMONIA ORG NOS
'486 '	PNEUMONIA- ORGANISM NOS
'5130 '	ABSCCESS OF LUNG
'5171 '	RHEUMATIC PNEUMONIA
'4870 '	INFLUENZA WITH PNEUMONIA
'4871 '	FLU W RESP MANIFEST NEC
'4878 '	FLU W MANIFESTATION NEC
'488 '	FLU D/T AVIAN FLU VIRUS (Begin 2007)
'463 '	ACUTE TONSILLITIS
'4740 '	CHRONIC TONSILLITIS (End 1997)
'47400'	CHRON TONSILLITIS (Begin 1997)
'47401'	CHRON ADENOIDITIS (Begin 1997)
'47402'	CHRON TONSIL ADENOID (Begin 1997)
'475 '	PERITONSILLAR ABSCESS
'4660 '	ACUTE BRONCHITIS
'4661 '	ACUTE BRONCHIOLITIS (End 1996)
'46611'	RSV BRONCHIOLITIS (Begin 1996)
'46619'	OTH ACUTE BRONCHIOL (Begin 1996)
'0320 '	FAUCIAL DIPHTHERIA
'0321 '	NASOPHARYNX DIPHTHERIA
'0322 '	ANT NASAL DIPHTHERIA
'0323 '	LARYNGEAL DIPHTHERIA
'0340 '	STREP SORE THROAT
'460 '	ACUTE NASOPHARYNGITIS
'4610 '	AC MAXILLARY SINUSITIS
'4611 '	AC FRONTAL SINUSITIS
'4612 '	AC ETHMOIDAL SINUSITIS
'4613 '	AC SPHENOIDAL SINUSITIS
'4618 '	OTHER ACUTE SINUSITIS
'4619 '	ACUTE SINUSITIS NOS
'462 '	ACUTE PHARYNGITIS
'4640 '	ACUTE LARYNGITIS (End 2001)

'46400'	ACUTE LARYNGITIS- W/O OBSTR (Begin 2001)
'46401'	ACUTE LARYNGITIS- W OBSTR (Begin 2001)
'46410'	AC TRACHEITIS NO OBSTRUC
'46411'	AC TRACHEITIS W OBSTRUCT
'46420'	AC LARYNGOTRACH NO OBSTR
'46421'	AC LARYNGOTRACH W OBSTR
'46430'	AC EPIGLOTTITIS NO OBSTR
'46431'	AC EPIGLOTTITIS W OBSTR
'4644 '	CROUP
'46450'	SUPRAGLOTTIS NOS- W/O OBSTR (Begin 2001)
'46451'	SUPRAGLOTTIS NOS- W/ OBSTR (Begin 2001)
'4650 '	ACUTE LARYNGOPHARYNGITIS
'4658 '	ACUTE URI MULT SITES NEC
'4659 '	ACUTE URI NOS
'4730 '	CHR MAXILLARY SINUSITIS
'4731 '	CHR FRONTAL SINUSITIS
'4732 '	CHR ETHMOIDAL SINUSITIS
'4733 '	CHR SPHENOIDAL SINUSITIS
'4738 '	CHRONIC SINUSITIS NEC
'4739 '	CHRONIC SINUSITIS NOS-
'490 '	BRONCHITIS NOS
'49121'	OBS CHR BRNC W ACT EXA (Begin 1991)
'49122'	OBS CHR BRONC W AC BRONC (Begin 2004)
'4941 '	BRONCHIECTASIS W/ACUTE EXACERBATION (Begin 2000)
'5070 '	FOOD/VOMIT PNEUMONITIS-
'5100 '	EMPHYEMA WITH FISTULA
'5109 '	EMPHYEMA W/O FISTULA
'5111 '	BACT PLEUR/EFFUS NOT TB
'5131 '	ABSCESS OF MEDIASTINUM
'47871'	LARYNGEAL CELLULITIS
'5192 '	MEDIASTINITIS
'99731'	VENTLTR ASSOC PNEUMOMINA

## H. Skin/Soft Tissue

ICD-9-CM CODE	SPECIFIC DIAGNOSIS
'0392 '	ABDOMINAL ACTINOMYCOSIS
'0393 '	CERVICOFAC ACTINOMYCOSIS
'0394 '	MADURA FOOT
'0400 '	GAS GANGRENE
'04042'	WOUND BOTULISM (Begin 2007)
'04081'	TROPICAL PYOMYOSITIS
'1123 '	CUTANEOUS CANDIDIASIS
'11282'	CANDIDAL OTITIS EXTERNA

'1141 '	PRIM CUTAN COCCIDIOID
'0956 '	SYPHILIS OF MUSCLE
'0957 '	SYPHILIS OF TENDON/BURSA
'09851'	GONOCOCCAL SYNOVITIS
'09852'	GONOCOCCAL BURSITIS
'38000'	PERICHONDRITIS PINNA NOS
'38001'	AC PERICHONDRITIS PINNA
'38002'	CHR PERICHONDRITIS PINNA
'38003'	CHONDRITIS OF PINNA (Begin 2004)
'38010'	INFECTION OF OTITIS EXTERNA NOS
'38011'	ACUTE INFECTION OF PINNA
'38012'	ACUTE SWIMMERS EAR
'38013'	AC INFECTION EXTERN EAR NEC
'38014'	MALIGNANT OTITIS EXTERNA
'38015'	CHR MYCOT OTITIS EXTERNA
'38016'	CHR INF OTIT EXTERNA NEC
'38022'	ACUTE OTITIS EXTERNA NEC
'38023'	CHR OTITIS EXTERNA NEC
'0201 '	CELLULOCUTANEOUS PLAGUE
'0210 '	ULCEROGLANDUL TULAREMIA
'0220 '	CUTANEOUS ANTHRAX
'0311 '	CUTANEOUS MYCOBACTERIA
'03285'	CUTANEOUS DIPHTHERIA
'035 '	ERYSIPELAS
'0390 '	CUTANEOUS ACTINOMYCOSIS
'6800 '	CARBUNCLE OF FACE
'6801 '	CARBUNCLE OF NECK
'6802 '	CARBUNCLE OF TRUNK
'6803 '	CARBUNCLE OF ARM
'6804 '	CARBUNCLE OF HAND
'6805 '	CARBUNCLE OF BUTTOCK
'6806 '	CARBUNCLE OF LEG
'6807 '	CARBUNCLE OF FOOT
'6808 '	CARBUNCLE- SITE NEC
'6809 '	CARBUNCLE NOS
'68100'	CELLULITIS- FINGER NOS
'68101'	FELON
'68102'	ONYCHIA OF FINGER
'68110'	CELLULITIS- TOE NOS
'68111'	ONYCHIA OF TOE
'6819 '	CELLULITIS OF DIGIT NOS
'6820 '	CELLULITIS OF FACE
'6821 '	CELLULITIS OF NECK
'6822 '	CELLULITIS OF TRUNK

'6823 '	CELLULITIS OF ARM
'6824 '	CELLULITIS OF HAND
'6825 '	CELLULITIS OF BUTTOCK
'6826 '	CELLULITIS OF LEG
'6827 '	CELLULITIS OF FOOT
'6828 '	CELLULITIS- SITE NEC
'6829 '	CELLULITIS NOS
'684 '	IMPETIGO
'6850 '	PILONIDAL CYST W ABSCESS
'6851 '	PILONIDAL CYST W/O ABSC
'6860 '	PYODERMA (End 1997)
'68600'	PYODERMA NOS (Begin 1997)
'68601'	PYODERMA GANGREN (Begin 1997)
'68609'	PYODERMA NEC (Begin 1997)
'6861 '	PYOGENIC GRANULOMA
'6868 '	LOCAL SKIN INFECTION NEC
'6869 '	LOCAL SKIN INFECTION NOS
'56731'	PSOAS MUSCLE ABSCESS (Begin 2005)
'7280 '	INFECTIVE MYOSITIS
'72886'	NECROTIZING FASCIITIS (Begin 1995)
'99762'	INFECTION AMPUTAT STUMP
'7854 '	GANGRENE

## I. Other

ICD-9-CM CODE	SPECIFIC DIAGNOSIS
'01000'	PRIM TB COMPLEX-UNSPEC
'01001'	PRIM TB COMPLEX-NO EXAM
'01002'	PRIM TB COMPLEX-EXM UNKN
'01003'	PRIM TB COMPLEX-MICRO DX
'01004'	PRIM TB COMPLEX-CULT DX
'01005'	PRIM TB COMPLEX-HISTO DX
'01006'	PRIM TB COMPLEX-OTH TEST
'01010'	PRIM TB PLEURISY-UNSPEC
'01011'	PRIM TB PLEURISY-NO EXAM
'01012'	PRIM TB PLEUR-EXAM UNKN
'01013'	PRIM TB PLEURIS-MICRO DX
'01014'	PRIM TB PLEURISY-CULT DX
'01015'	PRIM TB PLEURIS-HISTO DX
'01016'	PRIM TB PLEURIS-OTH TEST
'01080'	PRIM PROG TB NEC-UNSPEC
'01081'	PRIM PROG TB NEC-NO EXAM
'01082'	PRIM PR TB NEC-EXAM UNKN

'01083'	PRIM PRG TB NEC-MICRO DX
'01084'	PRIM PROG TB NEC-CULT DX
'01085'	PRIM PRG TB NEC-HISTO DX
'01086'	PRIM PRG TB NEC-OTH TEST
'01090'	PRIMARY TB NOS-UNSPEC
'01091'	PRIMARY TB NOS-NO EXAM
'01092'	PRIMARY TB NOS-EXAM UNKN
'01093'	PRIMARY TB NOS-MICRO DX
'01094'	PRIMARY TB NOS-CULT DX
'01095'	PRIMARY TB NOS-HISTO DX
'01096'	PRIMARY TB NOS-OTH TEST
'01100'	TB LUNG INFILTR-UNSPEC
'01101'	TB LUNG INFILTR-NO EXAM
'01102'	TB LUNG INFILTR-EXM UNKN
'01103'	TB LUNG INFILTR-MICRO DX
'01104'	TB LUNG INFILTR-CULT DX
'01105'	TB LUNG INFILTR-HISTO DX
'01106'	TB LUNG INFILTR-OTH TEST
'01110'	TB LUNG NODULAR-UNSPEC
'01111'	TB LUNG NODULAR-NO EXAM
'01112'	TB LUNG NODUL-EXAM UNKN
'01113'	TB LUNG NODULAR-MICRO DX
'01114'	TB LUNG NODULAR-CULT DX
'01115'	TB LUNG NODULAR-HISTO DX
'01116'	TB LUNG NODULAR-OTH TEST
'01120'	TB LUNG W CAVITY-UNSPEC
'01121'	TB LUNG W CAVITY-NO EXAM
'01122'	TB LUNG CAVITY-EXAM UNKN
'01123'	TB LUNG W CAVIT-MICRO DX
'01124'	TB LUNG W CAVITY-CULT DX
'01125'	TB LUNG W CAVIT-HISTO DX
'01126'	TB LUNG W CAVIT-OTH TEST
'01130'	TB OF BRONCHUS-UNSPEC
'01131'	TB OF BRONCHUS-NO EXAM
'01132'	TB OF BRONCHUS-EXAM UNKN
'01133'	TB OF BRONCHUS-MICRO DX
'01134'	TB OF BRONCHUS-CULT DX
'01135'	TB OF BRONCHUS-HISTO DX
'01136'	TB OF BRONCHUS-OTH TEST
'01140'	TB LUNG FIBROSIS-UNSPEC
'01141'	TB LUNG FIBROSIS-NO EXAM
'01142'	TB LUNG FIBROS-EXAM UNKN
'01143'	TB LUNG FIBROS-MICRO DX
'01144'	TB LUNG FIBROSIS-CULT DX



'01145'	TB LUNG FIBROS-HISTO DX
'01146'	TB LUNG FIBROS-OTH TEST
'01150'	TB BRONCHIECTASIS-UNSPEC
'01151'	TB BRONCHIECT-NO EXAM
'01152'	TB BRONCHIECT-EXAM UNKN
'01153'	TB BRONCHIECT-MICRO DX
'01154'	TB BRONCHIECT-CULT DX
'01155'	TB BRONCHIECT-HISTO DX
'01156'	TB BRONCHIECT-OTH TEST
'01160'	TB PNEUMONIA-UNSPEC
'01161'	TB PNEUMONIA-NO EXAM
'01162'	TB PNEUMONIA-EXAM UNKN
'01163'	TB PNEUMONIA-MICRO DX
'01164'	TB PNEUMONIA-CULT DX
'01165'	TB PNEUMONIA-HISTO DX
'01166'	TB PNEUMONIA-OTH TEST
'01170'	TB PNEUMOTHORAX-UNSPEC
'01171'	TB PNEUMOTHORAX-NO EXAM
'01172'	TB PNEUMOTHORAX-EXAM UNKN
'01173'	TB PNEUMOTHORAX-MICRO DX
'01174'	TB PNEUMOTHORAX-CULT DX
'01175'	TB PNEUMOTHORAX-HISTO DX
'01176'	TB PNEUMOTHORAX-OTH TEST
'01180'	PULMONARY TB NEC-UNSPEC
'01181'	PULMONARY TB NEC-NO EXAM
'01182'	PULMON TB NEC-EXAM UNKN
'01183'	PULMON TB NEC-MICRO DX
'01184'	PULMON TB NEC-CULT DX
'01185'	PULMON TB NEC-HISTO DX
'01186'	PULMON TB NEC-OTH TEST
'01190'	PULMONARY TB NOS-UNSPEC
'01191'	PULMONARY TB NOS-NO EXAM
'01192'	PULMON TB NOS-EXAM UNKN
'01193'	PULMON TB NOS-MICRO DX
'01194'	PULMON TB NOS-CULT DX
'01195'	PULMON TB NOS-HISTO DX
'01196'	PULMON TB NOS-OTH TEST
'01200'	TB PLEURISY-UNSPEC
'01201'	TB PLEURISY-NO EXAM
'01202'	TB PLEURISY-EXAM UNKN
'01203'	TB PLEURISY-MICRO DX
'01204'	TB PLEURISY-CULT DX
'01205'	TB PLEURISY-HISTOLOG DX
'01206'	TB PLEURISY-OTH TEST

'01210'	TB THORACIC NODES-UNSPEC
'01211'	TB THORAX NODE-NO EXAM
'01212'	TB THORAX NODE-EXAM UNKN
'01213'	TB THORAX NODE-MICRO DX
'01214'	TB THORAX NODE-CULT DX
'01215'	TB THORAX NODE-HISTO DX
'01216'	TB THORAX NODE-OTH TEST
'01220'	ISOL TRACHEAL TB-UNSPEC
'01221'	ISOL TRACHEAL TB-NO EXAM
'01222'	ISOL TRACH TB-EXAM UNKN
'01223'	ISOLAT TRACH TB-MICRO DX
'01224'	ISOL TRACHEAL TB-CULT DX
'01225'	ISOLAT TRACH TB-HISTO DX
'01226'	ISOLAT TRACH TB-OTH TEST
'01230'	TB LARYNGITIS-UNSPEC
'01231'	TB LARYNGITIS-NO EXAM
'01232'	TB LARYNGITIS-EXAM UNKN
'01233'	TB LARYNGITIS-MICRO DX
'01234'	TB LARYNGITIS-CULT DX
'01235'	TB LARYNGITIS-HISTO DX
'01236'	TB LARYNGITIS-OTH TEST
'01280'	RESP TB NEC-UNSPEC
'01281'	RESP TB NEC-NO EXAM
'01282'	RESP TB NEC-EXAM UNKN
'01283'	RESP TB NEC-MICRO DX
'01284'	RESP TB NEC-CULT DX
'01285'	RESP TB NEC-HISTO DX
'01286'	RESP TB NEC-OTH TEST
'01300'	TB MENINGITIS-UNSPEC
'01301'	TB MENINGITIS-NO EXAM
'01302'	TB MENINGITIS-EXAM UNKN
'01303'	TB MENINGITIS-MICRO DX
'01304'	TB MENINGITIS-CULT DX
'01305'	TB MENINGITIS-HISTO DX
'01306'	TB MENINGITIS-OTH TEST
'01310'	TUBRCLMA MENINGES-UNSPEC
'01311'	TUBRCLMA MENING-NO EXAM
'01312'	TUBRCLMA MENING-EXAM UNKN
'01313'	TUBRCLMA MENING-MICRO DX
'01314'	TUBRCLMA MENING-CULT DX
'01315'	TUBRCLMA MENING-HISTO DX
'01316'	TUBRCLMA MENING-OTH TEST
'01320'	TUBERCULOMA BRAIN-UNSPEC
'01321'	TUBRCLOMA BRAIN-NO EXAM

'01322'	TUBRCLMA BRAIN-EXAM UNKN
'01323'	TUBRCLOMA BRAIN-MICRO DX
'01324'	TUBRCLOMA BRAIN-CULT DX
'01325'	TUBRCLOMA BRAIN-HISTO DX
'01326'	TUBRCLOMA BRAIN-OTH TEST
'01330'	TB BRAIN ABSCESS-UNSPEC
'01331'	TB BRAIN ABSCESS-NO EXAM
'01332'	TB BRAIN ABSC-EXAM UNKN
'01333'	TB BRAIN ABSC-MICRO DX
'01334'	TB BRAIN ABSCESS-CULT DX
'01335'	TB BRAIN ABSC-HISTO DX
'01336'	TB BRAIN ABSC-OTH TEST
'01340'	TUBRCLMA SP CORD-UNSPEC
'01341'	TUBRCLMA SP CORD-NO EXAM
'01342'	TUBRCLMA SP CD-EXAM UNKN
'01343'	TUBRCLMA SP CRD-MICRO DX
'01344'	TUBRCLMA SP CORD-CULT DX
'01345'	TUBRCLMA SP CRD-HISTO DX
'01346'	TUBRCLMA SP CRD-OTH TEST
'01350'	TB SP CRD ABSCESS-UNSPEC
'01351'	TB SP CRD ABSC-NO EXAM
'01352'	TB SP CRD ABSC-EXAM UNKN
'01353'	TB SP CRD ABSC-MICRO DX
'01354'	TB SP CRD ABSC-CULT DX
'01355'	TB SP CRD ABSC-HISTO DX
'01356'	TB SP CRD ABSC-OTH TEST
'01360'	TB ENCEPHALITIS-UNSPEC
'01361'	TB ENCEPHALITIS-NO EXAM
'01362'	TB ENCEPHALIT-EXAM UNKN
'01363'	TB ENCEPHALITIS-MICRO DX
'01364'	TB ENCEPHALITIS-CULT DX
'01365'	TB ENCEPHALITIS-HISTO DX
'01366'	TB ENCEPHALITIS-OTH TEST
'01380'	CNS TB NEC-UNSPEC
'01381'	CNS TB NEC-NO EXAM
'01382'	CNS TB NEC-EXAM UNKN
'01383'	CNS TB NEC-MICRO DX
'01384'	CNS TB NEC-CULT DX
'01385'	CNS TB NEC-HISTO DX
'01386'	CNS TB NEC-OTH TEST
'01390'	CNS TB NOS-UNSPEC
'01391'	CNS TB NOS-NO EXAM
'01392'	CNS TB NOS-EXAM UNKN
'01393'	CNS TB NOS-MICRO DX

'01394'	CNS TB NOS-CULT DX
'01395'	CNS TB NOS-HISTO DX
'01396'	CNS TB NOS-OTH TEST
'01400'	TB PERITONITIS-UNSPEC
'01401'	TB PERITONITIS-NO EXAM
'01402'	TB PERITONITIS-EXAM UNKN
'01403'	TB PERITONITIS-MICRO DX
'01404'	TB PERITONITIS-CULT DX
'01405'	TB PERITONITIS-HISTO DX
'01406'	TB PERITONITIS-OTH TEST
'01480'	INTESTINAL TB NEC-UNSPEC
'01481'	INTESTIN TB NEC-NO EXAM
'01482'	INTEST TB NEC-EXAM UNKN
'01483'	INTESTIN TB NEC-MICRO DX
'01484'	INTESTIN TB NEC-CULT DX
'01485'	INTESTIN TB NEC-HISTO DX
'01486'	INTESTIN TB NEC-OTH TEST
'01500'	TB OF VERTEBRA-UNSPEC
'01501'	TB OF VERTEBRA-NO EXAM
'01502'	TB OF VERTEBRA-EXAM UNKN
'01503'	TB OF VERTEBRA-MICRO DX
'01504'	TB OF VERTEBRA-CULT DX
'01505'	TB OF VERTEBRA-HISTO DX
'01506'	TB OF VERTEBRA-OTH TEST
'01510'	TB OF HIP-UNSPEC
'01511'	TB OF HIP-NO EXAM
'01512'	TB OF HIP-EXAM UNKN
'01513'	TB OF HIP-MICRO DX
'01514'	TB OF HIP-CULT DX
'01515'	TB OF HIP-HISTO DX
'01516'	TB OF HIP-OTH TEST
'01520'	TB OF KNEE-UNSPEC
'01521'	TB OF KNEE-NO EXAM
'01522'	TB OF KNEE-EXAM UNKN
'01523'	TB OF KNEE-MICRO DX
'01524'	TB OF KNEE-CULT DX
'01525'	TB OF KNEE-HISTO DX
'01526'	TB OF KNEE-OTH TEST
'01550'	TB OF LIMB BONES-UNSPEC
'01551'	TB LIMB BONES-NO EXAM
'01552'	TB LIMB BONES-EXAM UNKN
'01553'	TB LIMB BONES-MICRO DX
'01554'	TB LIMB BONES-CULT DX
'01555'	TB LIMB BONES-HISTO DX

'01556'	TB LIMB BONES-OTH TEST
'01560'	TB OF MASTOID-UNSPEC
'01561'	TB OF MASTOID-NO EXAM
'01562'	TB OF MASTOID-EXAM UNKN
'01563'	TB OF MASTOID-MICRO DX
'01564'	TB OF MASTOID-CULT DX
'01565'	TB OF MASTOID-HISTO DX
'01566'	TB OF MASTOID-OTH TEST
'01570'	TB OF BONE NEC-UNSPEC
'01571'	TB OF BONE NEC-NO EXAM
'01572'	TB OF BONE NEC-EXAM UNKN
'01573'	TB OF BONE NEC-MICRO DX
'01574'	TB OF BONE NEC-CULT DX
'01575'	TB OF BONE NEC-HISTO DX
'01576'	TB OF BONE NEC-OTH TEST
'01580'	TB OF JOINT NEC-UNSPEC
'01581'	TB OF JOINT NEC-NO EXAM
'01582'	TB JOINT NEC-EXAM UNKN
'01583'	TB OF JOINT NEC-MICRO DX
'01584'	TB OF JOINT NEC-CULT DX
'01585'	TB OF JOINT NEC-HISTO DX
'01586'	TB OF JOINT NEC-OTH TEST
'01590'	TB BONE/JOINT NOS-UNSPEC
'01591'	TB BONE/JT NOS-NO EXAM
'01592'	TB BONE/JT NOS-EXAM UNKN
'01593'	TB BONE/JT NOS-MICRO DX
'01594'	TB BONE/JT NOS-CULT DX
'01595'	TB BONE/JT NOS-HISTO DX
'01596'	TB BONE/JT NOS-OTH TEST
'01600'	TB OF KIDNEY-UNSPEC
'01601'	TB OF KIDNEY-NO EXAM
'01602'	TB OF KIDNEY-EXAM UNKN
'01603'	TB OF KIDNEY-MICRO DX
'01604'	TB OF KIDNEY-CULT DX
'01605'	TB OF KIDNEY-HISTO DX
'01606'	TB OF KIDNEY-OTH TEST
'01610'	TB OF BLADDER-UNSPEC
'01611'	TB OF BLADDER-NO EXAM
'01612'	TB OF BLADDER-EXAM UNKN
'01613'	TB OF BLADDER-MICRO DX
'01614'	TB OF BLADDER-CULT DX
'01615'	TB OF BLADDER-HISTO DX
'01616'	TB OF BLADDER-OTH TEST
'01620'	TB OF URETER-UNSPEC

'01621'	TB OF URETER-NO EXAM
'01622'	TB OF URETER-EXAM UNKN
'01623'	TB OF URETER-MICRO DX
'01624'	TB OF URETER-CULT DX
'01625'	TB OF URETER-HISTO DX
'01626'	TB OF URETER-OTH TEST
'01630'	TB URINARY NEC-UNSPEC
'01631'	TB URINARY NEC-NO EXAM
'01632'	TB URINARY NEC-EXAM UNKN
'01633'	TB URINARY NEC-MICRO DX
'01634'	TB URINARY NEC-CULT DX
'01635'	TB URINARY NEC-HISTO DX
'01636'	TB URINARY NEC-OTH TEST
'01640'	TB EPIDIDYMIS-UNSPEC
'01641'	TB EPIDIDYMIS-NO EXAM
'01642'	TB EPIDIDYMIS-EXAM UNKN
'01643'	TB EPIDIDYMIS-MICRO DX
'01644'	TB EPIDIDYMIS-CULT DX
'01645'	TB EPIDIDYMIS-HISTO DX
'01646'	TB EPIDIDYMIS-OTH TEST
'01650'	TB MALE GENIT NEC-UNSPEC
'01651'	TB MALE GEN NEC-NO EXAM
'01652'	TB MALE GEN NEC-EX UNKN
'01653'	TB MALE GEN NEC-MICRO DX
'01654'	TB MALE GEN NEC-CULT DX
'01655'	TB MALE GEN NEC-HISTO DX
'01656'	TB MALE GEN NEC-OTH TEST
'01660'	TB OVARY & TUBE-UNSPEC
'01661'	TB OVARY & TUBE-NO EXAM
'01662'	TB OVARY/TUBE-EXAM UNKN
'01663'	TB OVARY & TUBE-MICRO DX
'01664'	TB OVARY & TUBE-CULT DX
'01665'	TB OVARY & TUBE-HISTO DX
'01666'	TB OVARY & TUBE-OTH TEST
'01670'	TB FEMALE GEN NEC-UNSPEC
'01671'	TB FEM GEN NEC-NO EXAM
'01672'	TB FEM GEN NEC-EXAM UNKN
'01673'	TB FEM GEN NEC-MICRO DX
'01674'	TB FEM GEN NEC-CULT DX
'01675'	TB FEM GEN NEC-HISTO DX
'01676'	TB FEM GEN NEC-OTH TEST
'01690'	GU TB NOS-UNSPEC
'01691'	GU TB NOS-NO EXAM
'01692'	GU TB NOS-EXAM UNKN

'01693'	GU TB NOS-MICRO DX
'01694'	GU TB NOS-CULT DX
'01695'	GU TB NOS-HISTO DX
'01696'	GU TB NOS-OTH TEST
'01700'	TB SKIN/SUBCUTAN-UNSPEC
'01701'	TB SKIN/SUBCUT-NO EXAM
'01702'	TB SKIN/SUBCUT-EXAM UNKN
'01703'	TB SKIN/SUBCUT-MICRO DX
'01704'	TB SKIN/SUBCUT-CULT DX
'01705'	TB SKIN/SUBCUT-HISTO DX
'01706'	TB SKIN/SUBCUT-OTH TEST
'01710'	ERYTHEMA NODOS TB-UNSPEC
'01711'	ERYTHEM NODOS TB-NO EXAM
'01712'	ERYTHEM NOD TB-EXAM UNKN
'01713'	ERYTHEM NOD TB-MICRO DX
'01714'	ERYTHEM NODOS TB-CULT DX
'01715'	ERYTHEM NOD TB-HISTO DX
'01716'	ERYTHEM NOD TB-OTH TEST
'01720'	TB PERIPH LYMPH-UNSPEC
'01721'	TB PERIPH LYMPH-NO EXAM
'01722'	TB PERIPH LYMPH-EXAM UNK
'01723'	TB PERIPH LYMPH-MICRO DX
'01724'	TB PERIPH LYMPH-CULT DX
'01725'	TB PERIPH LYMPH-HISTO DX
'01726'	TB PERIPH LYMPH-OTH TEST
'01730'	TB OF EYE-UNSPEC
'01731'	TB OF EYE-NO EXAM
'01732'	TB OF EYE-EXAM UNKN
'01733'	TB OF EYE-MICRO DX
'01734'	TB OF EYE-CULT DX
'01735'	TB OF EYE-HISTO DX
'01736'	TB OF EYE-OTH TEST
'01740'	TB OF EAR-UNSPEC
'01741'	TB OF EAR-NO EXAM
'01742'	TB OF EAR-EXAM UNKN
'01743'	TB OF EAR-MICRO DX
'01744'	TB OF EAR-CULT DX
'01745'	TB OF EAR-HISTO DX
'01746'	TB OF EAR-OTH TEST
'01750'	TB OF THYROID-UNSPEC
'01751'	TB OF THYROID-NO EXAM
'01752'	TB OF THYROID-EXAM UNKN
'01753'	TB OF THYROID-MICRO DX
'01754'	TB OF THYROID-CULT DX

'01755'	TB OF THYROID-HISTO DX
'01756'	TB OF THYROID-OTH TEST
'01760'	TB OF ADRENAL-UNSPEC
'01761'	TB OF ADRENAL-NO EXAM
'01762'	TB OF ADRENAL-EXAM UNKN
'01763'	TB OF ADRENAL-MICRO DX
'01764'	TB OF ADRENAL-CULT DX
'01765'	TB OF ADRENAL-HISTO DX
'01766'	TB OF ADRENAL-OTH TEST
'01770'	TB OF SPLEEN-UNSPEC
'01771'	TB OF SPLEEN-NO EXAM
'01772'	TB OF SPLEEN-EXAM UNKN
'01773'	TB OF SPLEEN-MICRO DX
'01774'	TB OF SPLEEN-CULT DX
'01775'	TB OF SPLEEN-HISTO DX
'01776'	TB OF SPLEEN-OTH TEST
'01780'	TB ESOPHAGUS-UNSPEC
'01781'	TB ESOPHAGUS-NO EXAM
'01782'	TB ESOPHAGUS-EXAM UNKN
'01783'	TB ESOPHAGUS-MICRO DX
'01784'	TB ESOPHAGUS-CULT DX
'01785'	TB ESOPHAGUS-HISTO DX
'01786'	TB ESOPHAGUS-OTH TEST
'01790'	TB OF ORGAN NEC-UNSPEC
'01791'	TB OF ORGAN NEC-NO EXAM
'01792'	TB ORGAN NEC-EXAM UNKN
'01793'	TB OF ORGAN NEC-MICRO DX
'01794'	TB OF ORGAN NEC-CULT DX
'01795'	TB OF ORGAN NEC-HISTO DX
'01796'	TB OF ORGAN NEC-OTH TEST
'01800'	ACUTE MILIARY TB-UNSPEC
'01801'	ACUTE MILIARY TB-NO EXAM
'01802'	AC MILIARY TB-EXAM UNKN
'01803'	AC MILIARY TB-MICRO DX
'01804'	ACUTE MILIARY TB-CULT DX
'01805'	AC MILIARY TB-HISTO DX
'01806'	AC MILIARY TB-OTH TEST
'01880'	MILIARY TB NEC-UNSPEC
'01881'	MILIARY TB NEC-NO EXAM
'01882'	MILIARY TB NEC-EXAM UNKN
'01883'	MILIARY TB NEC-MICRO DX
'01884'	MILIARY TB NEC-CULT DX
'01885'	MILIARY TB NEC-HISTO DX
'01886'	MILIARY TB NEC-OTH TEST



'01890'	MILIARY TB NOS-UNSPEC
'01891'	MILIARY TB NOS-NO EXAM
'01892'	MILIARY TB NOS-EXAM UNKN
'01893'	MILIARY TB NOS-MICRO DX
'01894'	MILIARY TB NOS-CULT DX
'01895'	MILIARY TB NOS-HISTO DX
'01896'	MILIARY TB NOS-OTH TEST
'1370 '	LATE EFFECT TB- RESP/NOS
'1371 '	LATE EFFECT CNS TB
'1372 '	LATE EFFECT GU TB
'1373 '	LATE EFF BONE & JOINT TB
'1374 '	LATE EFFECT TB NEC
'V1201'	HX TUBERCULOSIS (Begin 1994)
'0200 '	BUBONIC PLAGUE
'0208 '	OTHER TYPES OF PLAGUE
'0209 '	PLAGUE NOS
'0218 '	TULAREMIA NEC
'0219 '	TULAREMIA NOS
'0228 '	OTHER ANTHRAX MANIFEST
'0229 '	ANTHRAX NOS
'0230 '	BRUCELLA MELITENSIS
'0231 '	BRUCELLA ABORTUS
'0232 '	BRUCELLA SUIS
'0233 '	BRUCELLA CANIS
'0238 '	BRUCellosis NEC
'0239 '	BRUCellosis NOS
'024 '	GLANDERS
'025 '	MELIOIDOSIS
'0260 '	SPIRILLARY FEVER
'0269 '	RAT-BITE FEVER NOS
'0270 '	LISTERIOSIS
'0271 '	ERYSIPELOTHRIX INFECTION
'0272 '	PASTEURELLOSIS
'0278 '	ZOONOTIC BACT DIS NEC
'0279 '	ZOONOTIC BACT DIS NOS
'0300 '	LEPROMATOUS LEPROSY
'0301 '	TUBERCULOID LEPROSY
'0302 '	INDETERMINATE LEPROSY
'0303 '	BORDERLINE LEPROSY
'0308 '	LEPROSY NEC
'0309 '	LEPROSY NOS
'0312 '	DX DUE TO DISSEM MYCOBACT (Begin 1997)
'0318 '	MYCOBACTERIAL DIS NEC
'0319 '	MYCOBACTERIAL DIS NOS

'03289'	DIPHThERIA NEC
'0329 '	DIPHThERIA NOS
'0330 '	BORDETELLA PERTUSSIS
'0331 '	BORDETELLA PARAPERTUSSIS
'0338 '	WHOOPING COUGH NEC
'0339 '	WHOOPING COUGH NOS
'0341 '	SCARLET FEVER
'0363 '	MENINGOCOCC ADRENAL SYND
'03681'	MENINGOCOCC OPTIC NEURIT
'03689'	MENINGOCOCCAL INFECT NEC
'0369 '	MENINGOCOCCAL INFECT NOS
'037 '	TETANUS
'0398 '	ACTINOMYCOSIS NEC
'0399 '	ACTINOMYCOSIS NOS
'0401 '	RHINOSCLEROMA
'0402 '	WHIPPLE-S DISEASE
'0403 '	NECROBACILLOSIS
'04082'	TOXIC SHOCK SYNDROME (Begin 2002)
'04089'	BACTERIAL DISEASES NEC
'0410 '	STREPTOCOCCUS INFECT NOS (Begin 1980, End 1992)
'04100'	STREPTOCOCCUS UNSPEC (Begin 1992)
'04101'	GROUP A STREPTOCOCCUS (Begin 1992)
'04102'	GROUP B STREPTOCOCCUS (Begin 1992)
'04103'	GROUP C STREPTOCOCCUS (Begin 1992)
'04104'	GROUP D STREPTOCOCCUS (Begin 1992)
'04105'	GROUP G STREPTOCOCCUS (Begin 1992)
'04109'	OTHER STREPTOCOCCUS (Begin 1992)
'0411 '	STAPH INFECTION NOS (Begin 1980, End 1992)
'04110'	STAPH UNSPEC (Begin 1992)
'04111'	STAPH AUREUS (Begin 1992)
'04119'	OTHER STAPH (Begin 1992)
'0412 '	PNEUMOCOCCUS INFECT NOS
'0413 '	KLEBSIELLA INFECT NOS
'0414 '	E. COLI INFECT NOS
'0415 '	H. INFLUENZAE INFECT NOS
'0416 '	PROTEUS INFECTION NOS
'0417 '	PSEUDOMONAS INFECT NOS
'0418 '	BACTERIAL INFECTION NEC (Begin 1980, End 1992)
'04181'	MYCOPLASMA (Begin 1992)
'04182'	BACILLUS FRAGILIS (Begin 1992)
'04183'	CLOSTRID PERFRINGENS (Begin 1992)
'04184'	OTHER ANAEROBES (Begin 1992)
'04185'	OTHER GRAM NEG ORGS (Begin 1992)
'04186'	HELICOBACTER PYLORI INFECTION (Begin 1995)

'04189'	OTHER SPEC BACTERIA (Begin 1992)
'0419 '	BACTERIAL INFECTION NOS
'390 '	RHEUM FEV W/O HRT INVOLV
'3929 '	RHEUMATIC CHOREA NOS
'7953 '	POSITIVE CULTURE FINDING (End 2002)
'79531'	NONSPECIFIC POSITIVE FINDINGS/ANTHRAX (Begin 2002)
'79539'	OTHER NONSPECIFIC POSITIVE CULTURE (Begin 2002)
'V090 '	INFEC-PENICILLIN-RESIST ORGS (Begin 1993)
'V091 '	INFEC-CEPHALOSPORIN-RESIST ORGS (Begin 1993)
'V092 '	INFEC-MACROLIDES-RESIST ORGS (Begin 1993)
'V093 '	INFEC-TETRACYCLINE-RESIST ORGS (Begin 1993)
'V094 '	INFEC-AMINOGLYCOSIDE-RESIST ORGS (Begin 1993)
'V0950'	INFEC-UNRESIST TO MULT QUINOLONES (Begin 1993)
'V0951'	INFEC-MULT QUINOLONES-RESIST ORGS (Begin 1993)
'V096 '	INFEC-SULFONAMIDES-RESIST ORGS (Begin 1993)
'V0970'	INFEC-NOT MULTI-ANTIMYCOBACT-RESIS (Begin 1993)
'V0971'	INFEC-MULTI-ANTIMYCOBAC-RESIS ORGS (Begin 1993)
'V0980'	INFEC-OTH ORGS NOT MULTIDRUG-RESIS (Begin 1993)
'V0981'	INFEC-OTH MULTI-DRUG-RESIST ORGS (Begin 1993)
'V0990'	INFEC-UNSP ORGS NOT MULTIDRUG-RESIS (Begin 1993)
'V0991'	INFEC-UNSPEC MULTIDRUG-RESIST ORGS (Begin 1993)
'1125 '	DISSEMINATED CANDIDIASIS
'11284'	CANDIDAL ESOPHAGITIS (Begin 1992)
'11289'	CANDIDIASIS SITE NEC
'1129 '	CANDIDIASIS SITE NOS
'1143 '	PROGRESS COCCIDIOID NEC
'1149 '	COCCIDIOIDOMYCOSIS NOS
'11500'	HISTOPLASMA CAPSULAT NOS
'11509'	HISTOPLASMA CAPSULAT NEC
'11510'	HISTOPLASMA DUBOISII NOS
'11519'	HISTOPLASMA DUBOISII NEC
'11590'	HISTOPLASMOSIS NOS
'11599'	HISTOPLASMOSIS NEC
'1160 '	BLASTOMYCOSIS
'1161 '	PARACOCCIDIOIDOMYCOSIS
'1162 '	LOBOMYCOSIS
'1170 '	RHINOSPORIDIOSIS
'1171 '	SPOROTRICHOSIS
'1172 '	CHROMOBLASTOMYCOSIS
'1173 '	ASPERGILLOSIS
'1174 '	MYCOTIC MYCETOMAS
'1175 '	CRYPTOCOCCOSIS
'1176 '	ALLESCHERIOSIS
'1177 '	ZYGOMYCOSIS

'1178 '	DEMATIACIOUS FUNGI INF
'1179 '	MYCOSES NEC & NOS
'118 '	OPPORTUNISTIC MYCOSES
'0500 '	VARIOLA MAJOR
'0501 '	ALASTRIM
'0502 '	MODIFIED SMALLPOX
'0509 '	SMALLPOX NOS
'0510 '	COWPOX
'0511 '	PSEUDOCOWPOX
'0512 '	CONTAGIOUS PUSTULAR DERM
'0519 '	PARAVACCINIA NOS
'0522 '	POSTVARICELLA MYELITIS (Begin 2006)
'0527 '	VARICELLA COMPLICAT NEC
'0528 '	VARICELLA COMPLICAT NOS
'0529 '	VARICELLA UNCOMPLICATED
'05310'	H ZOSTER NERV SYST NOS
'05311'	GENICULATE HERPES ZOSTER
'05312'	POSTHERPES TRIGEM NEURAL
'05313'	POSTHERPES POLYNEUROPATH
'05314'	HERPES ZOSTER MYELITIS (Begin 2006)
'05319'	H ZOSTER NERV SYST NEC
'05371'	H ZOSTER OTITIS EXTERNA
'05379'	H ZOSTER COMPLICATED NEC
'0538 '	H ZOSTER COMPLICATED NOS
'0539 '	HERPES ZOSTER NOS
'0540 '	ECZEMA HERPETICUM
'05410'	GENITAL HERPES NOS
'05411'	HERPETIC VULVOVAGINITIS
'05412'	HERPETIC ULCER OF VULVA
'05413'	HERPETIC INFECT OF PENIS
'05419'	GENITAL HERPES NEC
'0542 '	HERPETIC GINGIVOSTOMAT
'0546 '	HERPETIC WHITLOW
'05471'	VISCERAL HERPES SIMPLEX
'05473'	H SIMPLEX OTITIS EXTERNA
'05474'	HERPES SIMPLEX MYELITIS (Begin 2006)
'05479'	H SIMPLEX COMPLICAT NEC
'0548 '	H SIMPLEX COMPLICAT NOS
'0549 '	HERPES SIMPLEX NOS
'05579'	MEASLES COMPLICATION NEC
'0558 '	MEASLES COMPLICATION NOS
'0559 '	MEASLES UNCOMPLICATED
'05600'	RUBELLA NERVE COMPL NOS
'05609'	RUBELLA NERVE COMPL NEC

'05679'	RUBELLA COMPLICATION NEC
'0568'	RUBELLA COMPLICATION NOS
'0569'	RUBELLA UNCOMPLICATED
'0570'	ERYTHEMA INFECTIOSUM
'0578'	VIRAL EXANTHEMATA NEC
'0579'	VIRAL EXANTHEMATA NOS
'05810'	ROSEOLA INFANTUM NOS (Begin 2007)
'05811'	ROSEOLA INFANT D/T HHV-6 (Begin 2007)
'05812'	ROSEOLA INFANT D/T HHV-7 (Begin 2007)
'05881'	HUMAN HERPESVIRUS 6 INFC (Begin 2007)
'05882'	HUMAN HERPESVIRUS 7 INFC (Begin 2007)
'05889'	HUMAN HERPESVIRS INF NEC (Begin 2007)
'0600'	SYLVATIC YELLOW FEVER
'0601'	URBAN YELLOW FEVER
'0609'	YELLOW FEVER NOS
'061'	DENGUE
'0650'	CRIMEAN HEMORRHAGIC FEV
'0651'	OMSK HEMORRHAGIC FEVER
'0652'	KYASANUR FOREST DISEASE
'0653'	TICK-BORNE HEM FEVER NEC
'0654'	MOSQUITO-BORNE HEM FEVER
'0658'	ARTHROPOD HEM FEVER NEC
'0659'	ARTHROPOD HEM FEVER NOS
'0660'	PHLEBOTOMUS FEVER
'0661'	TICK-BORNE FEVER
'0663'	MOSQUITO-BORNE FEVER NEC
'0664'	WEST NILE FEVER (Begin 2002, End 2004)
'06640'	WEST NILE FEVER NOS (Begin 2004)
'06641'	WEST NILE FEVER W/ENCEPH (Begin 2004)
'06642'	WEST NILE NEURO MAN NEC (Begin 2004)
'06649'	WEST NILE W COMPLIC NEC (Begin 2004)
'0668'	ARTHROPOD VIRUS NEC
'0669'	ARTHROPOD VIRUS NOS
'071'	RABIES
'0720'	MUMPS ORCHITIS
'0723'	MUMPS PANCREATITIS
'07271'	MUMPS HEPATITIS
'07272'	MUMPS POLYNEUROPATHY
'07279'	MUMPS COMPLICATION NEC
'0728'	MUMPS COMPLICATION NOS
'0729'	MUMPS UNCOMPLICATED
'0737'	ORNITHOSIS COMPLICAT NEC
'0738'	ORNITHOSIS COMPLICAT NOS
'0739'	ORNITHOSIS NOS

'0740 '	HERPANGINA
'0741 '	EPIDEMIC PLEURODYNIA
'0743 '	HAND- FOOT & MOUTH DIS
'0748 '	COXSACKIE VIRUS NEC
'075 '	INFECTIOUS MONONUCLEOSIS
'0783 '	CAT-SCRATCH DISEASE
'0784 '	FOOT & MOUTH DISEASE
'0785 '	CYTOMEGAL INCLUSION DIS
'0786 '	HEM NEPHROSONEPHRITIS
'0787 '	ARENAVIRAL HEM FEVER
'07888'	OTH SPEC DISEASE DUE TO CHLAMYDIAE (Begin 1993)
'07889'	VIRAL DISEASE NEC
'0790 '	ADENOVIRUS INFECT NOS
'0791 '	ECHO VIRUS INFECT NOS
'0792 '	COXSACKIE VIRUS INF NOS
'0793 '	RHINOVIRUS INFECT NOS
'0796 '	RESPIR SYNCITIAL VIRUS (Begin 1996)
'0798 '	VIRAL INFECTION NEC (End 1993)
'07981'	HANTAVIRUS INFECTION (Begin 1995)
'07982'	SARS-ASSOCIATED CORONAVIRUS (Begin 2003)
'07983'	PARVOVIRUS B19 (Begin 2007)
'07988'	OTH SPEC CHLAMYDIAL INFECTION (Begin 1993)
'07989'	OTH SPEC VIRAL INFECTION (Begin 1993)
'0799 '	VIRAL INFECTION NOS (End 1993)
'07998'	CHLAMYDIAL INFECTION NOS (Begin 1993)
'07999'	VIRAL INFECTION NOS (Begin 1993)
'7908 '	VIREMIA NOS-
'080 '	LOUSE-BORNE TYPHUS
'0810 '	MURINE TYPHUS
'0811 '	BRILL-S DISEASE
'0812 '	SCRUB TYPHUS
'0819 '	TYPHUS NOS
'0820 '	SPOTTED FEVERS
'0821 '	BOUTONNEUSE FEVER
'0822 '	NORTH ASIAN TICK FEVER
'0823 '	QUEENSLAND TICK TYPHUS
'08240'	EHRlichiosis- UNSPECIFIED (Begin 2000)
'08241'	EHRlichiosis CHAFEENSIS (Begin 2000)
'08249'	OTHER EHRlichiosis (Begin 2000)
'0828 '	TICK-BORNE RICKETTS NEC
'0829 '	TICK-BORNE RICKETTS NOS
'0831 '	TRENCH FEVER
'0832 '	RICKETTSIALPOX
'0838 '	RICKETTSIOSES NEC

'0839 '	RICKETTSIOSIS NOS
'0840 '	FALCIPARUM MALARIA
'0841 '	VIVAX MALARIA
'0842 '	QUARTAN MALARIA
'0843 '	OVALE MALARIA
'0844 '	MALARIA NEC
'0845 '	MIXED MALARIA
'0846 '	MALARIA NOS
'0847 '	INDUCED MALARIA
'0848 '	BLACKWATER FEVER
'0849 '	MALARIA COMPLICATED NEC
'0850 '	VISCERAL LEISHMANIASIS
'0851 '	CUTAN LEISHMANIAS URBAN
'0852 '	CUTAN LEISHMANIAS ASIAN
'0853 '	CUTAN LEISHMANIAS ETHIOP
'0854 '	CUTAN LEISHMANIAS AMER
'0855 '	MUCOCUTAN LEISHMANIASIS
'0859 '	LEISHMANIASIS NOS
'0860 '	CHAGAS DISEASE OF HEART
'0861 '	CHAGAS DIS OF OTH ORGAN
'0862 '	CHAGAS DISEASE NOS
'0863 '	GAMBIAN TRYPANOSOMIASIS
'0864 '	RHODESIAN TRYPANOSOMIAS
'0865 '	AFRICAN TRYPANOSOMA NOS
'0869 '	TRYPANOSOMIASIS NOS
'0870 '	LOUSE-BORNE RELAPS FEVER
'0871 '	TICK-BORNE RELAPS FEVER
'0879 '	RELAPSING FEVER NOS
'0880 '	BARTONELLOSIS
'0888 '	ARTHROPOD-BORNE DIS NEC (Begin 1980, End 1989)
'08881'	LYME DISEASE (Begin 1989)
'08882'	BABESIOSIS (Begin 1993)
'08889'	OTH ARTHROPOD-BORNE DIS (Begin 1989)
'0889 '	ARTHROPOD-BORNE DIS NOS
'1000 '	LEPTOSPIROS ICTEROHEM
'10089'	LEPTOSPIRAL INFECT NEC
'1009 '	LEPTOSPIROSIS NOS
'101 '	VINCENT-S ANGINA
'1020 '	INITIAL LESIONS YAWS
'1021 '	MULTIPLE PAPILOMATA
'1022 '	EARLY SKIN YAWS NEC
'1023 '	HYPERKERATOSIS OF YAWS
'1024 '	GUMMATA AND ULCERS- YAWS
'1025 '	GANGOSA

'1026 '	YAWS OF BONE & JOINT
'1027 '	YAWS MANIFESTATIONS NEC
'1028 '	LATENT YAWS
'1029 '	YAWS NOS
'1030 '	PINTA PRIMARY LESIONS
'1031 '	PINTA INTERMED LESIONS
'1032 '	PINTA LATE LESIONS
'1033 '	PINTA MIXED LESIONS
'1039 '	PINTA NOS
'1040 '	NONVENEREAL ENDEMIC SYPH
'1048 '	SPIROCHETAL INFECT NEC
'1049 '	SPIROCHETAL INFECT NOS
'1200 '	SCHISTOSOMA HAEMATOBIMUM
'1201 '	SCHISTOSOMA MANSONI
'1202 '	SCHISTOSOMA JAPONICUM
'1203 '	CUTANEOUS SCHISTOSOMA
'1208 '	SCHISTOSOMIASIS NEC
'1209 '	SCHISTOSOMIASIS NOS
'1210 '	OPISTHORCHIASIS
'1211 '	CLONORCHIASIS
'1212 '	PARAGONIMIASIS
'1213 '	FASCIOLIASIS
'1214 '	FASCIOLOPSIASIS
'1215 '	METAGONIMIASIS
'1216 '	HETEROPHYIASIS
'1218 '	TREMATODE INFECTION NEC
'1219 '	TREMATODE INFECTION NOS
'1220 '	ECHINOCOCC GRANUL LIVER
'1221 '	ECHINOCOCC GRANUL LUNG
'1222 '	ECHINOCOCC GRAN THYROID
'1223 '	ECHINOCOCC GRANUL NEC
'1224 '	ECHINOCOCC GRANUL NOS
'1225 '	ECHINOCOC MULTILOC LIVER
'1226 '	ECHINOCOCC MULTILOC NEC
'1227 '	ECHINOCOCC MULTILOC NOS
'1228 '	ECHINOCOCCOSIS NOS LIVER
'1229 '	ECHINOCOCCOSIS NEC/NOS
'1230 '	TAENIA SOLIUM INTESTINE
'1231 '	CYSTICERCOSIS
'1232 '	TAENIA SAGINATA INFECT
'1233 '	TAENIASIS NOS
'1234 '	DIPHYLLOBOTHRIAS INTEST
'1235 '	SPARGANOSIS
'1236 '	HYMENOLEPIASIS



'1238 '	CESTODE INFECTION NEC
'1239 '	CESTODE INFECTION NOS
'124 '	TRICHINOSIS
'1250 '	BANCROFTIAN FILARIASIS
'1251 '	MALAYAN FILARIASIS
'1252 '	LOIASIS
'1253 '	ONCHOCERCIASIS
'1254 '	DIPETALONEMIASIS
'1255 '	MANSONELLA OZZARDI INFEC
'1256 '	FILARIASIS NEC
'1257 '	DRACONTIASIS
'1259 '	FILARIASIS NOS
'1260 '	ANCYLOSTOMA DUODENALE
'1261 '	NECATOR AMERICANUS
'1262 '	ANCYLOSTOMA BRAZILIENSE
'1263 '	ANCYLOSTOMA CEYLANICUM
'1268 '	ANCYLOSTOMA NEC
'1269 '	ANCYLOSTOMIASIS NOS
'1270 '	ASCARIASIS
'1271 '	ANISAKIASIS
'1272 '	STRONGYLOIDIASIS
'1273 '	TRICHURIASIS
'1274 '	ENTEROBIASIS
'1275 '	CAPILLARIASIS
'1276 '	TRICHOSTRONGYLIASIS
'1277 '	INTEST HELMINTHIASIS NEC
'1278 '	MIXED INTESTINE HELMINTH
'1279 '	INTEST HELMINTHIASIS NOS
'1280 '	TOXOCARIASIS
'1281 '	GNATHOSTOMIASIS
'1288 '	HELMINTHIASIS NEC
'1289 '	HELMINTHIASIS NOS
'129 '	INTESTIN PARASITISM NOS
'1305 '	TOXOPLASMA HEPATITIS
'1307 '	TOXOPLASMOSIS SITE NEC
'1308 '	MULTISYSTEM TOXOPLASMOS
'1309 '	TOXOPLASMOSIS NOS
'13100'	UROGENITAL TRICHOMON NOS
'13101'	TRICHOMONAL VAGINITIS
'13102'	TRICHOMONAL URETHRITIS
'13103'	TRICHOMONAL PROSTATITIS
'13109'	UROGENITAL TRICHOMON NEC
'1318 '	TRICHOMONIASIS NEC
'1319 '	TRICHOMONIASIS NOS

'1338 '	ACARIASIS NEC
'1339 '	ACARIASIS NOS
'1340 '	MYIASIS
'1341 '	ARTHROPOD INFEST NEC
'1342 '	HIRUDINIASIS
'1362 '	FREE-LIVING AMEBA INFECT
'1364 '	PSOROSPERMIASIS
'1365 '	SARCOSPORIDIOSIS
'1368 '	INFECT/PARASITE DIS NEC
'1369 '	INFECT/PARASITE DIS NOS
'0903 '	SYPHILITIC KERATITIS
'0913 '	SECONDARY SYPH SKIN
'0914 '	SYPHILITIC ADENOPATHY
'09150'	SYPHILITIC UVEITIS NOS
'09151'	SYPHILIT CHORIORETINITIS
'09152'	SYPHILITIC IRIDOCYCLITIS
'09161'	SYPHILITIC PERIOSTITIS
'09162'	SYPHILITIC HEPATITIS
'09169'	SECOND SYPH VISCERA NEC
'0917 '	SECOND SYPHILIS RELAPSE
'09182'	SYPHILITIC ALOPECIA
'09189'	SECONDARY SYPHILIS NEC
'0919 '	SECONDARY SYPHILIS NOS
'0930 '	AORTIC ANEURYSM- SYPHIL
'0931 '	SYPHILITIC AORTITIS
'09320'	SYPHIL ENDOCARDITIS NOS
'09321'	SYPHILITIC MITRAL VALVE
'09322'	SYPHILITIC AORTIC VALVE
'09323'	SYPHIL TRICUSPID VALVE
'09324'	SYPHIL PULMONARY VALVE
'09381'	SYPHILITIC PERICARDITIS
'09382'	SYPHILITIC MYOCARDITIS
'09389'	CARDIOVASCULAR SYPH NEC
'0939 '	CARDIOVASCULAR SYPH NOS
'09482'	SYPHILITIC PARKINSONISM
'09483'	SYPH DISSEM RETINITIS
'09484'	SYPHILITIC OPTIC ATROPHY
'09485'	SYPH RETROBULB NEURITIS
'09486'	SYPHIL ACOUSTIC NEURITIS
'09487'	SYPH RUPT CEREB ANEURYSM
'0950 '	SYPHILITIC EPISCLERITIS
'0958 '	LATE SYMPT SYPHILIS NEC
'0959 '	LATE SYMPT SYPHILIS NOS
'0970 '	LATE SYPHILIS NOS

'0979 '	SYPHILIS NOS
'09840'	GONOCOCCAL CONJUNCTIVIT
'09841'	GONOCOCCAL IRIDOCYCLITIS
'09842'	GONOCOCCAL ENDOPHTHALMIA
'09843'	GONOCOCCAL KERATITIS
'09849'	GONOCOCCAL EYE NEC
'0986 '	GONOCOCCAL INFEC PHARYNX
'09881'	GONOCOCCAL KERATOSIS
'09883'	GONOCOCCAL PERICARDITIS
'09884'	GONOCOCCAL ENDOCARDITIS
'09885'	GONOCOCCAL HEART DIS NEC
'09889'	GONOCOCCAL INF SITE NEC
'09950'	CHLAMYDIA-UNSPEC SITE (Begin 1992)
'09951'	CHLAMYDIA-PHARYNX (Begin 1992)
'09959'	CHLAMYDIA-NSC (Begin 1992)
'0213 '	OCULOGLANDULAR TULAREMIA
'03281'	CONJUNCTIVAL DIPHTHERIA
'05320'	HERPES ZOSTER OF EYELID
'05321'	H ZOSTER KERATOCONJUNCT
'05322'	H ZOSTER IRIDOCYCLITIS
'05329'	HERPES ZOSTER OF EYE NEC
'05440'	HERPES SIMPLEX EYE NOS
'05441'	HERPES SIMPLEX OF EYELID
'05442'	DENDRITIC KERATITIS
'05443'	H SIMPLEX KERATITIS
'05444'	H SIMPLEX IRIDOCYCLITIS
'05449'	HERPES SIMPLEX EYE NEC
'05571'	MEASLES KERATITIS
'0760 '	TRACHOMA- INITIAL STAGE
'0761 '	TRACHOMA- ACTIVE STAGE
'0769 '	TRACHOMA NOS
'0770 '	INCLUSION CONJUNCTIVITIS
'0771 '	EPIDEM KERATOCONJUNCTIV
'0772 '	PHARYNGOCONJUNCT FEVER
'0773 '	ADENOVIRAL CONJUNCT NEC
'0774 '	EPIDEM HEM CONJUNCTIVIT
'0778 '	VIRAL CONJUNCTIVITIS NEC
'0779 '	VIRAL CONJUNCTIVITIS NOS (End 1993)
'07798'	DIS OF CONJUNCT DUE TO CHLAMYDIAE (Begin 1993)
'07799'	DIS OF CONJUNCT DUE TO VIRUSES (Begin 1993)
'11502'	HISTOPLASM CAPSUL RETINA
'11512'	HISTOPLASM DUBOIS RETINA
'11592'	HISTOPLASMOSIS RETINITIS
'1301 '	TOXOPLASM CONJUNCTIVITIS

'1302'	TOXOPLASM CHORIORETINIT
'36000'	PURULENT ENDOPHTHALM NOS
'36001'	ACUTE ENDOPHTHALMITIS
'36002'	PANOPHTHALMITIS
'36003'	CHRONIC ENDOPHTHALMITIS
'36004'	VITREOUS ABSCESS
'36013'	PARASITIC ENDOPHTHAL NOS
'36019'	ENDOPHTHALMITIS NEC
'37055'	CORNEAL ABSCESS
'37200'	ACUTE CONJUNCTIVITIS NOS
'37201'	SEROUS CONJUNCTIVITIS
'37202'	AC FOLLIC CONJUNCTIVITIS
'37203'	MUCOPUR CONJUNCTIVIT NEC
'37204'	PSEUDOMEMB CONJUNCTIVIT
'37210'	CHR CONJUNCTIVITIS NOS
'37211'	SIMPL CHR CONJUNCTIVITIS
'37212'	CHR FOLLIC CONJUNCTIVIT
'37213'	VERNAL CONJUNCTIVITIS
'37215'	PARASITIC CONJUNCTIVITIS
'37220'	BLEPHAROCONJUNCTIVIT NOS
'37221'	ANGULAR BLEPHAROCONJUNCT
'37222'	CONTACT BLEPHAROCONJUNCT
'37230'	CONJUNCTIVITIS NOS
'37239'	CONJUNCTIVITIS NEC
'37300'	BLEPHARITIS NOS
'37311'	HORDEOLUM EXTERNUM
'37312'	HORDEOLUM INTERNUM
'37313'	ABSCESS OF EYELID
'3734'	INFECT DERM LID W DEFORM
'3735'	INFEC DERMATITIS LID NEC
'3736'	PARASITIC INFEST EYELID
'37500'	DACRYOADENITIS NOS
'37501'	ACUTE DACRYOADENITIS
'37502'	CHRONIC DACRYOADENITIS
'37530'	DACRYOCYSTITIS NOS
'37531'	ACUTE CANALICULITIS
'37532'	ACUTE DACRYOCYSTITIS
'37533'	PHLEGMON DACRYOCYSTITIS
'37541'	CHRONIC CANALICULITIS
'37542'	CHRONIC DACRYOCYSTITIS
'37601'	ORBITAL CELLULITIS
'37602'	ORBITAL PERIOSTITIS
'37603'	ORBITAL OSTEOMYELITIS
'37604'	ORBITAL TENONITIS

'37612'	ORBITAL MYOSITIS
'37613'	PARASITE INFEST- ORBIT
'0552 '	POSTMEASLES OTITIS MEDIA
'38100'	AC NONSUP OTITIS MED NOS
'38101'	AC SEROUS OTITIS MEDIA
'38102'	AC MUCOID OTITIS MEDIA
'38103'	AC SANGUIN OTITIS MEDIA
'38110'	CHR SEROUS OM SIMP/NOS
'38119'	CHR SEROUS OM NEC
'38120'	CHR MUCOID OM SIMP/NOS
'38129'	CHR MUCOID OM NEC
'3813 '	CHR NONSUP OM NOS/NEC
'3814 '	NONSUPP OTITIS MEDIA NOS
'38150'	EUSTACHIAN SALPING NOS
'38151'	AC EUSTACHIAN SALPING
'38152'	CHR EUSTACHIAN SALPING
'38200'	AC SUPP OTITIS MEDIA NOS
'38201'	AC SUPP OM W DRUM RUPT
'38202'	AC SUPP OM IN OTH DIS
'3821 '	CHR TUBOTYMPAN SUPPUR OM
'3822 '	CHR ATTICOANTRAL SUP OM
'3823 '	CHR SUP OTITIS MEDIA NOS
'3824 '	SUPPUR OTITIS MEDIA NOS
'3829 '	OTITIS MEDIA NOS
'38300'	AC MASTOIDITIS W/O COMPL
'38301'	SUBPERI MASTOID ABSCESS
'38302'	AC MASTOIDITIS-COMPL NEC
'3831 '	CHRONIC MASTOIDITIS
'38320'	PETROSITIS NOS
'38321'	ACUTE PETROSITIS
'38322'	CHRONIC PETROSITIS
'3839 '	MASTOIDITIS NOS
'42490'	ENDOCARDITIS NOS
'42491'	ENDOCARDITIS IN OTH DIS
'42499'	ENDOCARDITIS NEC
'03282'	DIPHTheritic Myocarditis
'03640'	MENINGOCOCC CARDITIS NOS
'03641'	MENINGOCOCC PERICARDITIS
'03642'	MENINGOCOCC ENDOCARDITIS
'03643'	MENINGOCOCC MYOCARDITIS
'11281'	CANDIDAL ENDOCARDITIS
'11503'	HISTOPLASM CAPS PERICARD
'11504'	HISTOPLASM CAPS ENDOCARD
'11513'	HISTOPLASM DUB PERICARD

'11514'	HISTOPLASM DUB ENDOCARD
'11593'	HISTOPLASMOSIS PERICARD
'11594'	HISTOPLASMOSIS ENDOCARD
'1303 '	TOXOPLASMA MYOCARDITIS
'4210 '	AC/SUBAC BACT ENDOCARD
'4211 '	AC ENDOCARDIT IN OTH DIS
'4219 '	AC/SUBAC ENDOCARDIT NOS
'42292'	SEPTIC MYOCARDITIS
'41512'	SEPTIC PULMONARY EMBOLSM (Begin 2007)
'47822'	PARAPHARYNGEAL ABSCESS
'47824'	RETROPHARYNGEAL ABSCESS
'5225 '	PERIAPICAL ABSCESS
'5273 '	SALIVARY GLAND ABSCESS
'5283 '	CELLULITIS/ABSCESS MOUTH
'9966 '	INFEC/INFLAM-DEVIC/GRAFT (Begin 1980, End 1989)
'99660'	REACTION-UNSP DEVIC/GRFT (Begin 1989)
'99661'	REACT-CARDIAC DEV/GRAFT (Begin 1989)
'99662'	REACT-OTH VASC DEV/GRAFT (Begin 1989)
'99663'	REACT-NERV SYS DEV/GRAFT (Begin 1989)
'99669'	REACT-INT PROS DEVIC NEC (Begin 1989)
'99931'	INFECT D/T CENT VEN CATH (Begin 2007)
'9985 '	POSTOPERATIVE INFECTION (End 1996)
'99851'	INFECTED POSTOP SEROMA (Begin 1996)
'99859'	OTH POSTOP INFECTION (Begin 1996)
'9993 '	INFEC COMPL MED CARE NEC (end 2007)
'99939'	INFECT FOL INFUS/INJ/VAC (Begin 2007)
'683 '	ACUTE LYMPHADENITIS