

**BS A258U**

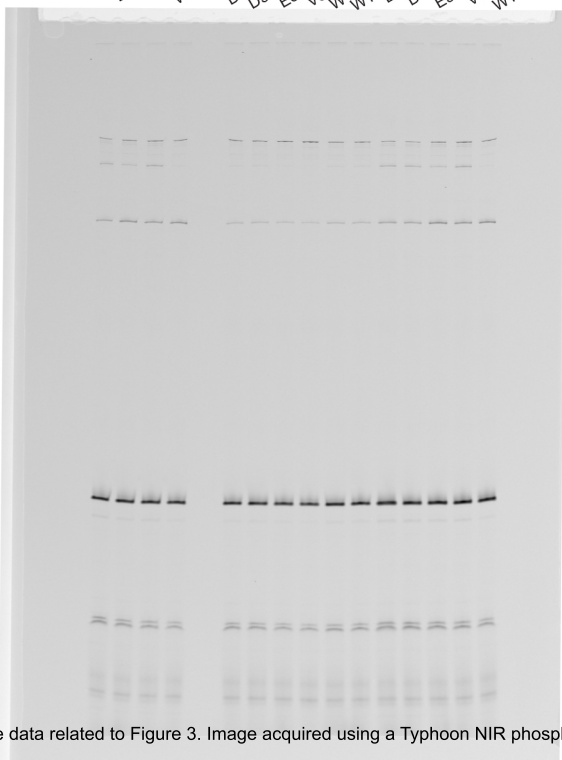
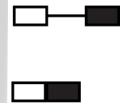
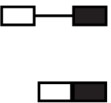
**BS U257C**

**BS A258U**

D563G  
E529K  
V502F  
WT

D563G  
D563G  
E529K  
V502F  
WT  
WT

D563G  
D563G  
E529K  
V502F  
WT

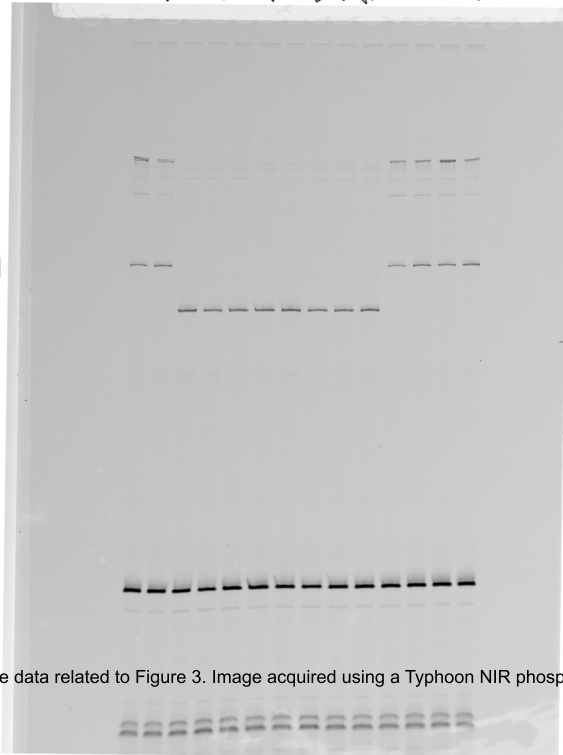
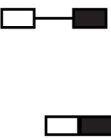


U6

U6

**BS A258U**                      **BS WT**                      **BS A258U**

V502F    WT    D563G    E529K    V502F    WT    D563G    E529K    V502F    WT    D563G    E529K    V502F    WT



U6

U6

Raw image data related to Figure 3. Image acquired using a Typhoon NIR phosphorimager.