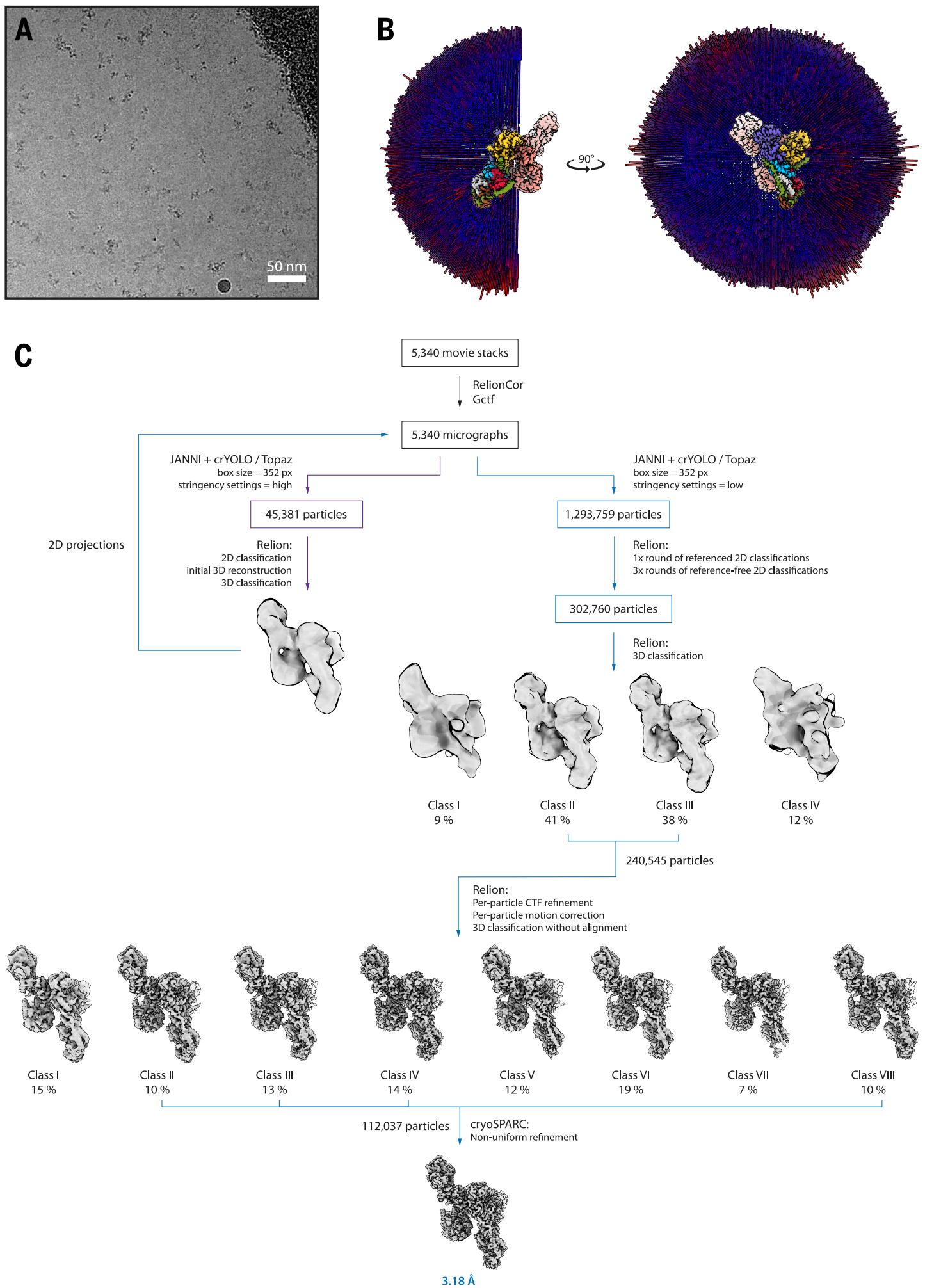


# FIGURE S7



**Fig. S7. (A)** A representative motion-corrected and denoised micrograph from the Raptor-Rag-Ragulator cryo-EM dataset. Note the accumulation of protein molecules close to the edge of carbon (top-right corner).

**(B)** Angular distribution views of the final set of particles that produced the 3.18 Å map. A clipping plane was applied to cut through the middle of the distribution sphere. Coloring from red to blue correlates with the number of particles at a specific orientation (red – abundant views, blue – sparse views). Oriented experimental maps of the Raptor-Rag-Ragulator complex are drawn on top of the distribution spheres.

**(C)** Cryo-EM data processing workflow indicating particle counts, procedures applied, and selection decisions made.