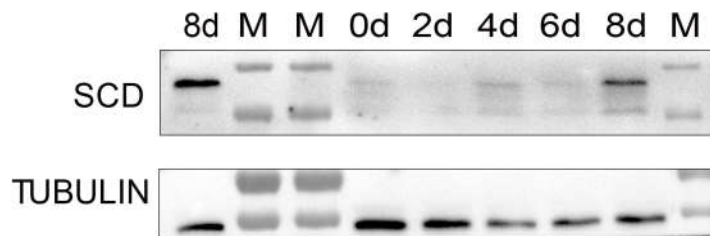


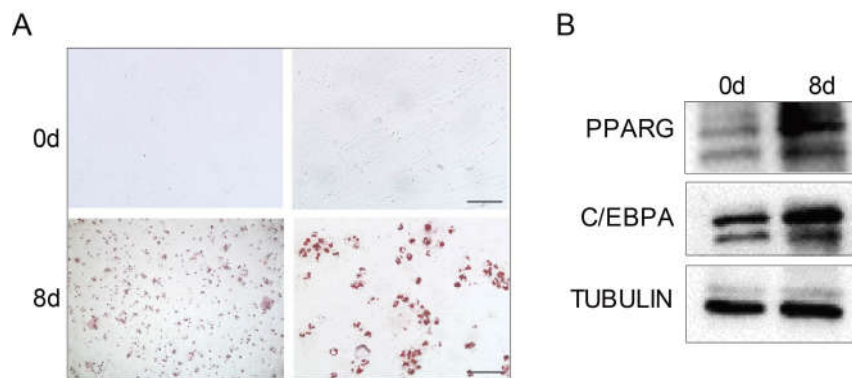
Supporting information

Supplemental Figure S1



Supplemental Figure S1. The expression of SCD in cells by differentiation day. Western blot analysis results showing that the expression of SCD at differentiation day 8 was higher than it was on differentiation day 0, day 2, day 4 or day 6. The protein marker was named M.

Supplemental Figure S2



Supplemental Figure S2. Porcine embryonic fibroblasts were differentiated into mature adipocytes. The differentiation method was performed according to a previously described method. (A) Oil red O staining of differentiated day 0 and day 8 porcine embryonic fibroblasts. Red-colored droplets represent mature lipid droplets. Scale bar, 100 μ m. (B) The protein levels of the adipogenesis marker genes, PPARG and C/EBPA, were upregulated in differentiated cells.

Supplemental Table S1. Primers used in this study

| Gene Name | Forward (5' - 3') | Reverse (5' - 3') |
|---------------|---------------------------|-----------------------------|
| <i>ACACA</i> | TCAGAAGGAGGAGGAGGG AA | ATGACGGGACTGTTTGGCT A |
| <i>C/EBPA</i> | GGCCAGCACACACACATTA GA | CCCCCAAAGAAGAGAACC AAG |
| <i>CPT1A</i> | ACCAACCCCAACATTCCAT A | CCCTTTACCGAAAGTGGTG A |
| <i>CPT2</i> | ACCTGGACCCTGCATACAA G | CACACACTGGAGAACTC GC |
| <i>DGAT1</i> | CCCACCATCCAGAACTCCA T | CGGTCTCCAAACTGCATGA G |
| <i>DGAT2</i> | CCCTCATAGCTGCCTACTC C | GAGGAAAGACAGGACCCA CT |
| <i>ELVOL6</i> | CCGGAAGTTTGCCATGTTC A | GCAGAAGAGCACAAGGTA GC |
| <i>FADS2</i> | GGAACCACATCGTCCACA AG | CTTCTTGCCGTACTIONCAACC G |
| <i>FABP4</i> | AAGAAGTGGGAGTGGGCT TT | TTCCTGGCCCAATTTGAAG G |
| <i>FASN</i> | CTGATCAAGGTGCTGCTGT C | CGAAGGAGTTTATGCCAC G |

| | | |
|---------------------|---------------------|---------------------|
| <i>GAPDH</i> | GTCGGAGTGAACGGATTG | AGTGGAGGTCAATGAAGG |
| | G | GG |
| <i>PPARG</i> | CCAGCATTCCACTCCACA | GACACAGGCTCCACTTTGA |
| | CTA | TG |
| <i>SCD</i> | CTTCCTGATCATTGCCAAC | GCAAACCACCCTTCTCTTT |
| | A | G |
| <i>SCD #9</i> | AGAAGACATCCGCCCTGA | TCTTGCAGGTGGGGATCAA |
| | AA | T |
| <i>SCDKO-GT-lar</i> | CACTGCCAGCTCTAGCCTT | GGCTCCACTATCAGCCCAA |
| <i>ge</i> | T | G |
| <i>SREBP1-1C</i> | TTTCTGACCCGCTTCTCCT | ACGGAACAACGAGTCAC |
| | | CT |
| <i>VLCAD</i> | GCCCATCAGAGCATTGGTT | TAGACAGAACGCAGCCAT |
| | T | GA |
