

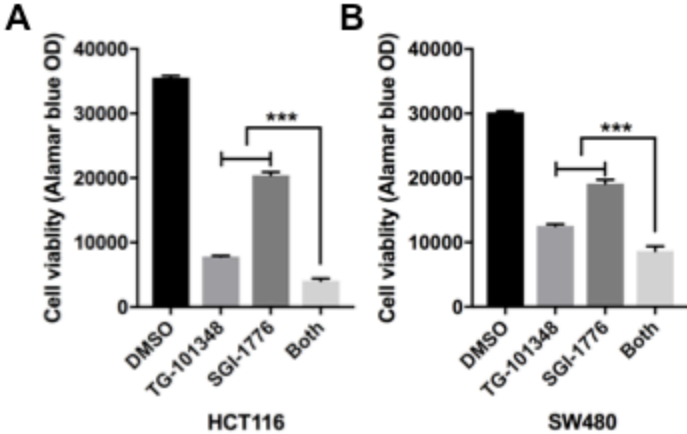
OMTO, Volume 17

Supplemental Information

Stomatin-like Protein 2 Promotes Tumor Cell Survival by Activating the JAK2-STAT3-PIM1 Pathway, Suggesting a Novel Therapy in CRC

Qiang Liu, Anqi Li, Lisha Wang, Wei He, Ling Zhao, Chao Wu, Shasha Lu, Xuanguang Ye, Huiyong Zhao, Xiaohan Shen, Xiuying Xiao, and Zebing Liu

Supplementary Figure S1



Supplementary Figure Legends

Supplementary Figure S1. The combination of TG-101348 with SGI-1776 is synergistic in CRC. **A** and **B**, The bar plots show the relative cell viability with the treatment of DMSO, 1 μ M TG-101348, 2.5 μ M SGI-1776 and the combination in HCT116 and SW480 cells. Cell viability was assessed at 72 hours.

Supplementary Table S1. sgRNA sequences for the knockout of SLP-2 and the sequencing primer of SLP-2

sgRNA	Forward primer (5' >> 3')	Reverse primer (5' >> 3')
sg1	CACCGGTTTCGGGGCAATCCAGAGG	AAACCCTCTGGATTGCCCCGAAACC
sg2	CACCGTATCGGATCCGGTCTAACAC	AAACGTGTTAGACCGGATCCGATAC
sg3	CACCGCATCAACGTGCCTGAGCAGT	AAACACTGCTCAGGCACGTTGATGC
Primers	Forward primer (5' >> 3')	Reverse primer (5' >> 3')
SLP-2	TGCAAGAGGAAAGGCTCGGGTA	CTTGTAAAGGTCCATGATGCGC

Supplementary Table S3. The correlation of SLP-2 expression with clinicopathological features in 491 patients with CRC

Characteristics	n	SLP-2 immunoreactivity		P value
		Low (%)	High (%)	
Age (years)				0.412
<60	208	118 (56.73)	90 (43.27)	
≥60	283	150 (53.00)	133 (47.00)	
Sex				0.283
Male	231	132 (57.14)	99 (42.85)	
Female	260	136 (52.30)	124 (47.69)	
CEA (ng/ml)				0.256
≤ 5	156	89 (57.05)	67 (42.95)	
> 5	111	53 (47.75)	58 (52.25)	
Unknown	224	126 (56.25)	98 (43.75)	
Histological type				0.100
Adenocarcinoma	380	215 (56.58)	165 (43.42)	
Mucinous/SRCC	111	53 (47.74)	58 (52.25)	
Predominant tumor differentiation				< 0.0001
High	53	40 (75.47)	13 (24.53)	
Moderate	348	208 (59.77)	140 (40.23)	
Poor	90	20 (22.22)	70 (77.78)	
Depth of tumor invasion				< 0.0001
Tis, T1 and T2	38	33 (86.84)	5 (13.16)	
T3 and T4	453	235 (51.88)	218 (48.12)	
Lymphatic and/or venous invasion				0.004
Absent	436	248 (56.88)	188 (43.12)	
Present	55	20 (36.36)	35 (63.64)	
Nodal involvement				< 0.0001
Absent	313	205 (65.50)	108 (34.50)	
Present	178	63 (35.39)	115 (64.61)	
Distant metastasis				0.009
Absent	438	248 (56.62)	190 (43.38)	
Present	53	20 (37.74)	33(62.26)	
TNM stage				< 0.0001
I and II	293	197 (67.24)	96 (32.76)	
III and IV	198	71 (35.86)	127 (64.14)	

NOTE. For statistical analyses, a chi-square or Fisher's exact test was used for between-group comparisons. Bold font indicates a significant difference. High, high level of SLP-2 expression; Low, low level of SLP-2 expression. The tumor stage was determined according to the TNM criteria.

Supplementary Table S4. Multivariate cox proportional hazard analysis of prognostic variables in CRC patients

Variable	Hazard ratio (95% CI)	<i>P</i> value
Age		
<60	0.533 (0.325-0.875)	0.013
≥60	1	
Differentiation		
High/moderate	0.601 (0.355-1.019)	0.059
Poor	1	
Distant metastasis		
Absent	0.329 (0.176-0.614)	< 0.001
Present	1	
TNM stage		
I and II	0.392 (0.235-0.652)	< 0.001
III and IV	1	
SLP-2		
Low expression	0.469 (0.272-0.808)	0.006
High expression	1	

NOTE. Multivariate cox regression analysis was used to determine whether SLP-2 was independent of other clinical covariates. CI, confidence interval. Bold font indicates a significant difference.