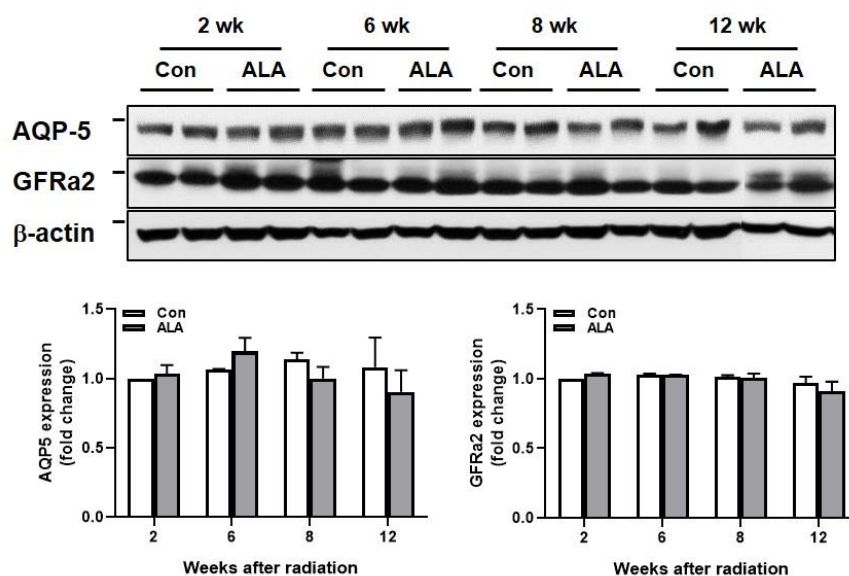


Supplementary:



Supplementary Figure 1. Salivary gland expression of AQP5 and GFRa2 in 2, 6, 8, and 12 weeks after radiation. β -actin was used as the loading control. Western blots for the expression of AQP5 and GFRa2 are normalized to β -actin and the expression was shown as signal intensity. Figures are representative in each group. Size markers mean 37, 50, and 50 kDa from upper. Con; control ($n = 3$ per lane). ALA; ALA only treated group ($n = 3$ per lane). Data were presented as mean \pm SEM ($*p < 0.05$).