

Figure S1. SSF on corn cobs at different pH and moisture levels by *A. terreus* (IA and FA yields: **A** and **B**, respectively) and *A. oryzae* (**C** and **D**, respectively).

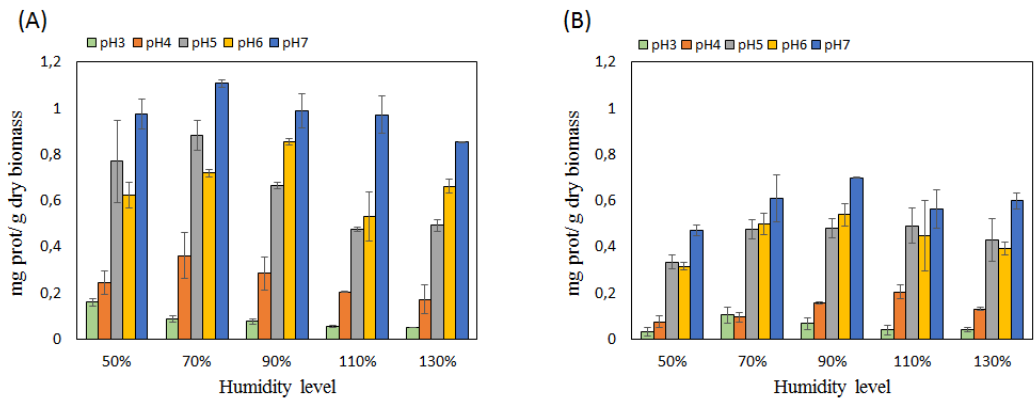


Figure S2. Fungal growth (proteins productions) under different pH and moisture conditions. **(A)** SSF of corn cobs by *A. terreus* and **(B)** SSF of corn cobs by *A. oryzae*.