

Supplementary Figure 1, Huang et al.

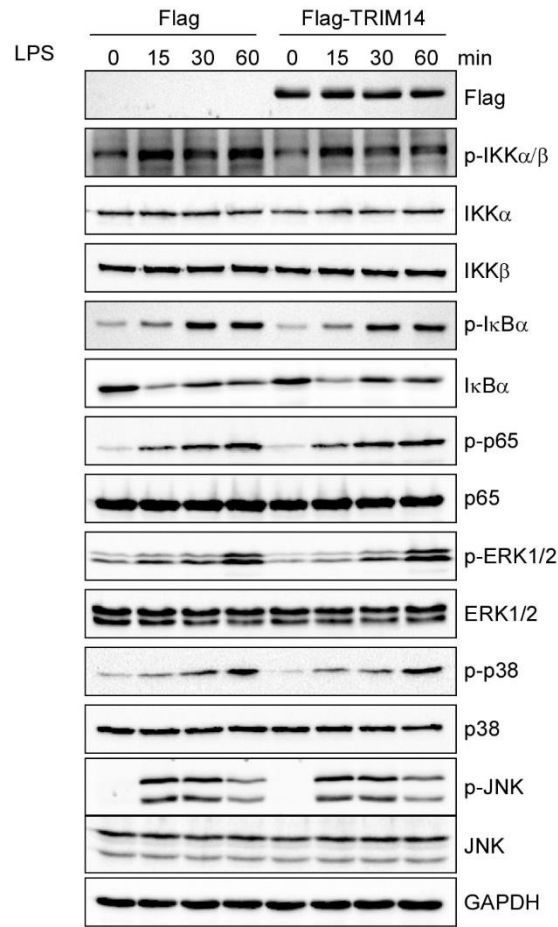


Fig. S1. Overexpression of TRIM14 does not affect LPS-induced NF- κ B signaling in Raw264.7 cells. Raw264.7 cells were transiently transfected with Flag-TRIM14 or Flag vector (control) for 24 h and then stimulated with 1 μ g/mL LPS for 0, 15, 30, and 60 min. Cell lysates were harvested for detection of the phosphorylated protein levels as indicated by Western blot.

Supplementary Table 1: Sequences of QPCR primers used in this study.

Primer Name	Forward Sequences (5'-3')	Reverse Sequences (5'-3')
Mouse TRIM14	GACGGGGCGTATGGCTG	AGTCCTGGATTAGCTTCTGCAC
Human TRIM14	GAGGTCGGAGCTTGTGCGAG	TTCTTGCTGAGTTTCTGCAC
Human VCAM-1	TGTTTGCAGCTTCTCAAGCTTTT	GATGTGGTCCCCTCATTCGT
Human ICAM-1	AGCTTCGTGTCTGTATGGC	TTTTCTGGCCACGTCCAGTT
Human E-Selectin	GGCAGTTCCGGGAAAGATCA	GTGGGAGCTTACAGGTAGG
Human VE-Cadherin	ATGAGATCGTGGTGGAAAGCG	TGTGTACTTGGTCTGGGTGAAG
Human TNF- α	TCTCGCACCCCGAGTGA	GGAGCTGCCCTCAGCTT
Human MCP1	CAGCCAGATGCAATCAATGCC	TGGAATCCTGAACCCACTTCT
Human IL-8	TCTGTGTGAAGGTGCAGTTTTG	TTTCTGTGTTGGCGCAGTGT
Human CXCL1	CTGGCTTAGAACAAAGGGGCT	TAAAGGTAGCCCTTGTTTCCCC
Human CCL-5	CGTGCCACATCAAGGAGTA	CTTGACCTGTGGACGACTGC
Human β -actin	ACGTTGCTATCCAGGCTGTG	GAGGGCATACCCCTCGTAGA
Mouse β -actin	GATATCGCTGCGCTGGTCG	CATTCCCACCATCACACCCT
Human 18S RNA	GCTCGCTCCTCTCCTACTTG	ATCTAGAGTCACCAAGCCGC
ChIP 1	AATTGAAACCGTGCCTGAA	TCCATTGCATATTCCACATCTA
ChIP 2	TGAAATTCCTTGTACCTTTGTG	TTTTCCAGCTTGGTGTCTGA