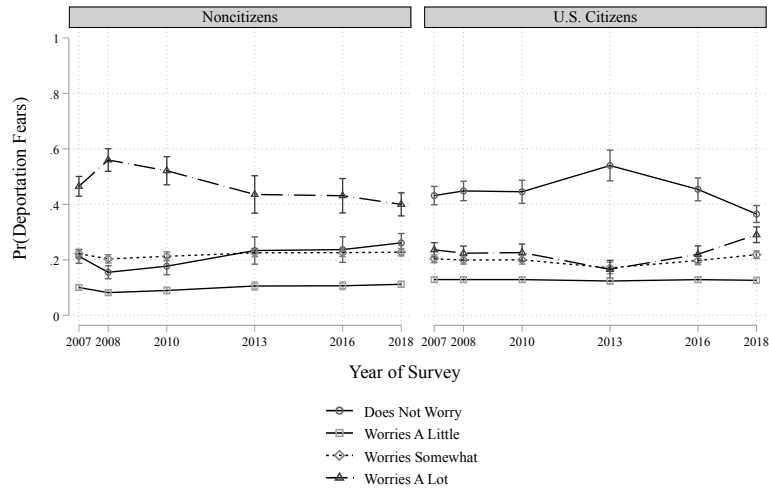


Notes: Vertical dashed line represents 0. Horizontal bars represent 95 percent confidence intervals based on linearized standard errors. Deportation fears question asks: “Regardless of your own immigration or citizenship status, how much, if at all, do you worry that you, a family member, or a close friend could be deported? Would you say that you worry a lot, some, not much, or not at all?” Respondents answering “a lot” and “some” are combined into a single category; those answering “not much” and “not at all” are also combined.

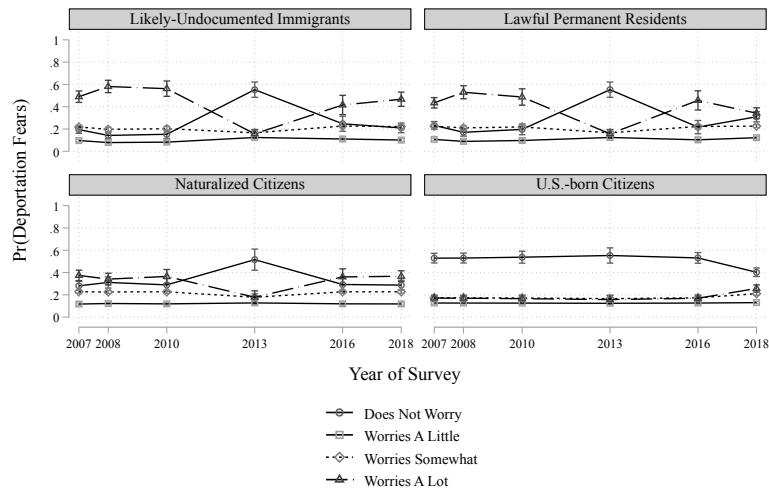
Source: Author’s analysis of 2007, 2008, 2010, 2013, 2016, and 2018 National Survey of Latinos from Pew Hispanic Center.

Appendix Figure A. Adjusted Odds Ratios of Latinos Reporting Deportation Fears Using Theoretically-relevant Controls Available in Each Survey Year

1. By Citizenship



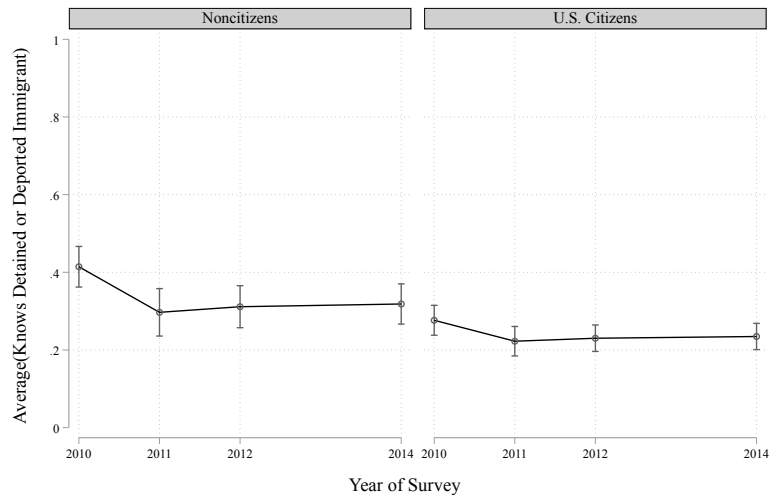
2. By Legal Status



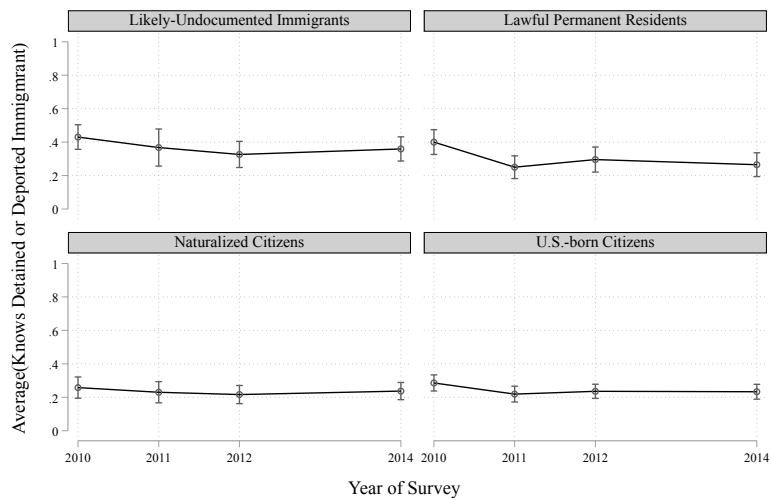
Notes: Vertical bars represent 95 percent confidence intervals based on linearized standard errors. Missing data are imputed using chained equations. Deportation fears question asks: “Regardless of your own immigration or citizenship status, how much, if at all, do you worry that you, a family member, or a close friend could be deported? Would you say that you worry a lot, some, not much, or not at all?” Controls include: age, sex, educational attainment, political party, the number of adults in a respondent’s household, the geographic region in which the respondent completed the survey, the survey year, and an interaction term between citizenship and survey year. Source: Author’s analysis of 2007, 2008, 2010, 2013, 2016, and 2018 National Survey of Latinos from Pew Hispanic Center.

Appendix Figure B. Adjusted Predicted Probabilities of Latinos Reporting Deportation Fears as Scale by Citizenship and Legal Status, 2007-2018

1. By Citizenship



2. By Legal Status

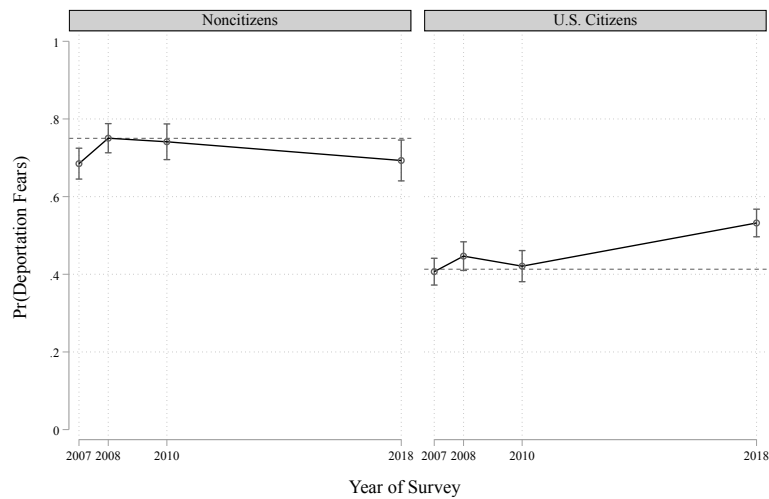


Notes: Vertical bars represent 95 percent confidence intervals based on linearized standard errors. Question asks: "Do you personally know someone who has been deported or detained by the federal government for immigration reasons in the last 12 months?"

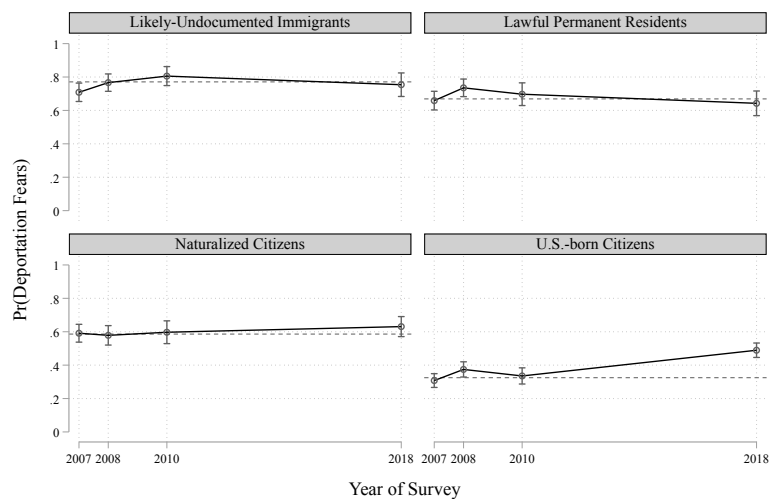
Source: Author's analysis of 2010, 2011, 2012, and 2014 National Survey of Latinos from Pew Hispanic Center.

Appendix Figure C. Proportions of Latinos Knowing Someone Who Has Been Detained or Deported for Immigration-Related Reasons by Citizenship and Legal Status, 2010-2014

1. By Citizenship



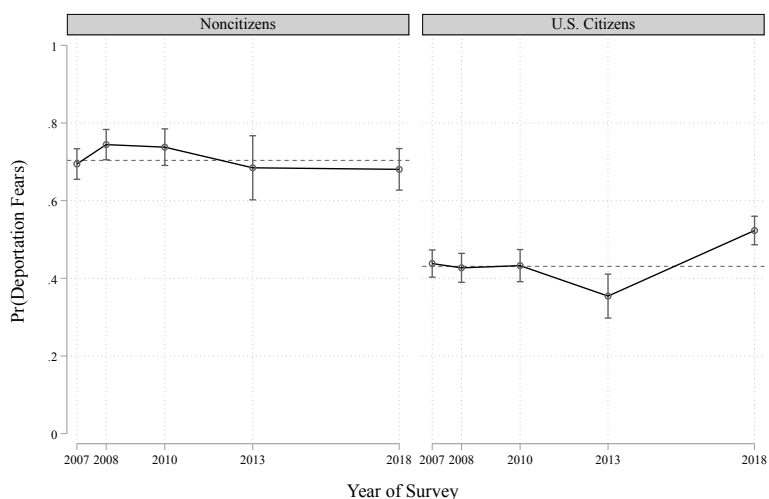
2. By Legal Status



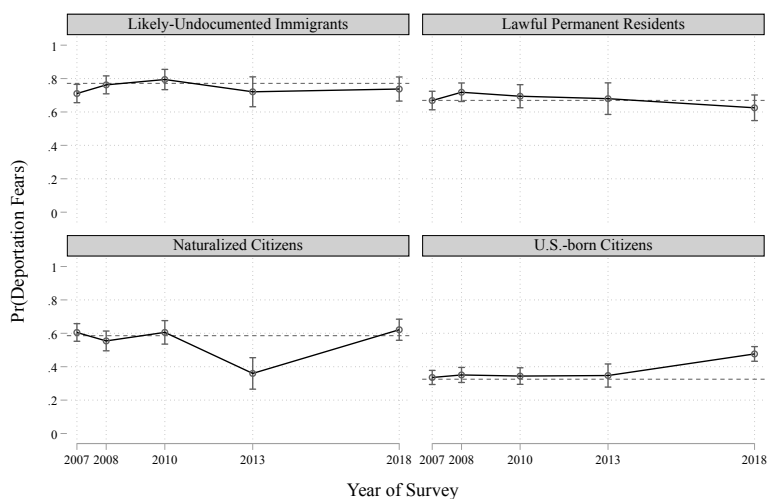
Notes: Dashed horizontal line in each plot in Appendix Figure D1 represents the sample average for noncitizens (75.0 percent) and U.S. citizens (41.3 percent) in 2007. Dashed horizontal line in each plot represents the average for likely-undocumented immigrants (77.1 percent), lawful permanent residents (66.9 percent), naturalized citizens (58.6 percent), and U.S.-born citizens (32.5 percent) in 2007. Vertical bars represent 95 percent confidence intervals based on linearized standard errors. Missing data are imputed using chained equations. Deportation fears question asks: "Regardless of your own immigration or citizenship status, how much, if at all, do you worry that you, a family member, or a close friend could be deported? Would you say that you worry a lot, some, not much, or not at all?" Respondents answering "a lot" and "some" are combined into a single category; those answering "not much" and "not at all" are also combined. Controls include: age, sex, educational attainment, political party, the number of adults in a respondent's household, the geographic region in which the respondent completed the survey, the survey year, perceptions of racial/ethnic discrimination, and an interaction term between citizenship or legal status and survey year. Source: Author's analysis of 2007, 2008, 2010, and 2018 National Survey of Latinos from Pew Hispanic Center.

Appendix Figure D. Adjusted Predicted Probabilities of Reporting Deportation Fears with Perceptions of Racial/Ethnic Discrimination Control by Citizenship and Legal Status, 2007-2018

1. By Citizenship



2. By Legal Status



Notes: Dashed horizontal line in each plot in Appendix Figure E1 represents the sample average for noncitizens (75.0 percent) and U.S. citizens (41.3 percent) in 2007. Dashed horizontal line in each plot in Appendix Figure E2 represents the average for likely-undocumented immigrants (77.1 percent), lawful permanent residents (66.9 percent), naturalized citizens (58.6 percent), and U.S.-born citizens (32.5 percent) in 2007. Vertical bars represent 95 percent confidence intervals based on linearized standard errors. Missing data are imputed using chained equations. Deportation fears question asks: "Regardless of your own immigration or citizenship status, how much, if at all, do you worry that you, a family member, or a close friend could be deported? Would you say that you worry a lot, some, not much, or not at all?" Respondents answering "a lot" and "some" are combined into a single category; those answering "not much" and "not at all" are also combined. Controls include: age, sex, educational attainment, political party, the number of adults in a respondent's household, the geographic region in which the respondent completed the survey, the survey year, national heritage, and an interaction term between citizenship and survey year. Source: Author's analysis of 2007, 2008, 2010, 2013, 2016 and 2018 National Survey of Latinos from Pew Hispanic Center.

Appendix Figure E. Adjusted Predicted Probabilities of Reporting Deportation Fears with National Heritage Control by Citizenship and Legal Status, 2007-2018