

Supplementary Material

Bioassay-guided isolation and identification of antidiabetic compounds from *Garcinia cowa* leaf extract

Piyaporn Phukhatmuen^a, Achara Raksat^a, Surat Laphookhieo^a, Rawiwan Charoensup^{b,c}, Thidarat Duangyod,^{b,c} Wisanu Maneerat*^{a,c}

^a *Center of Chemical Innovation for Sustainability (CIS) and School of Science, Mae Fah Luang University, Chiang Rai 57100, Thailand*

^b *School of Integrative Medicine, Mae Fah Luang University, Chiang Rai 57100, Thailand*

^c *Medicinal Plant Innovation Center of Mae Fah Luang University, Chiang Rai 57100, Thailand*

*E-mail: wisanu.man@mfu.ac.th

* Corresponding Author: tel.: +66-5391-6792; e-mail address: wisanu.man@mfu.ac.th

Table of Contents

Figure S1	¹ H NMR spectrum (400 MHz, CDCl ₃) of garciniacowone K (1)	3
Figure S2	Expanded ¹ H NMR spectrum of garciniacowone K (1)	3
Figure S3	¹³ C NMR spectrum (100 MHz, CDCl ₃) of garciniacowone K (1)	4
Figure S4	Expanded ¹³ C NMR spectrum of garciniacowone K (1)	4
Figure S5	DEPT 135 spectrum of garciniacowone K (1)	5
Figure S6	Expanded DEPT 135 spectrum of garciniacowone K (1)	5
Figure S7	COSY spectrum of garciniacowone K (1)	6
Figure S8	HSQC spectrum of garciniacowone K (1)	6
Figure S9	HMBC spectrum of garciniacowone K (1)	7
Figure S10	NOESY spectrum of garciniacowone K (1)	7
Figure S11	HRESITOFMS spectrum of garciniacowone K (1)	8

ip9_190416_2.3.fid
GEP20_CDCl3_400

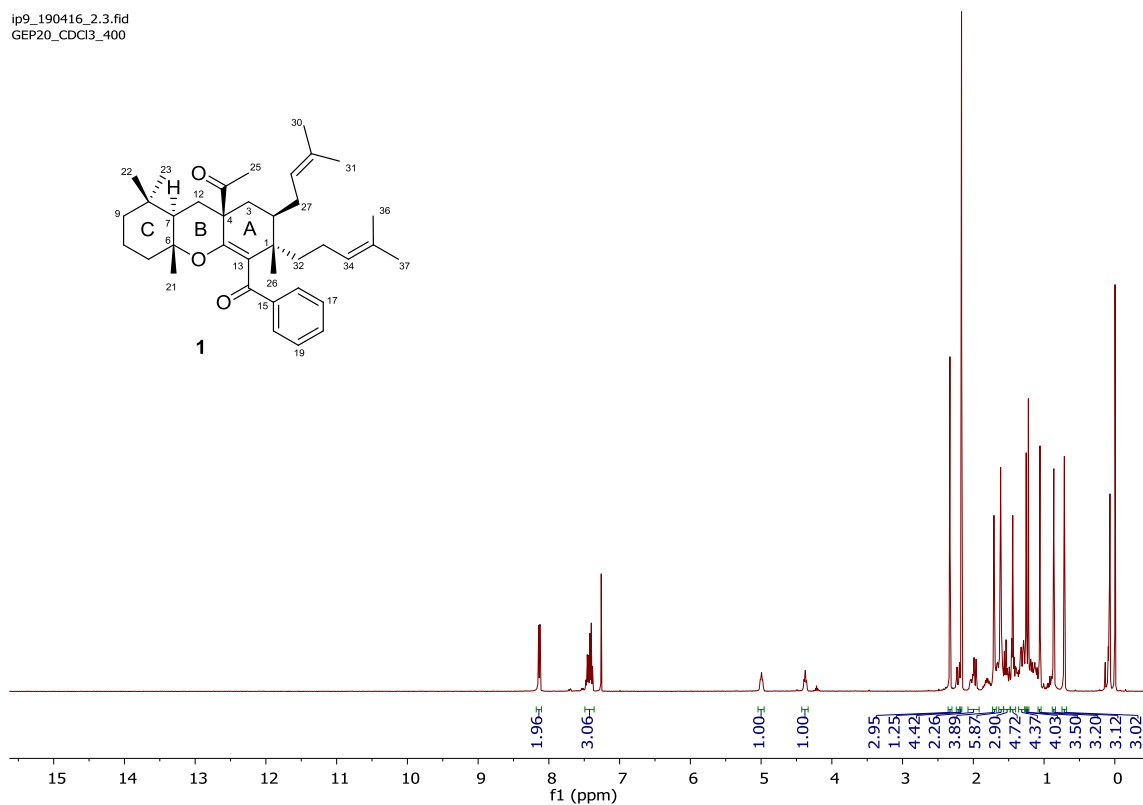
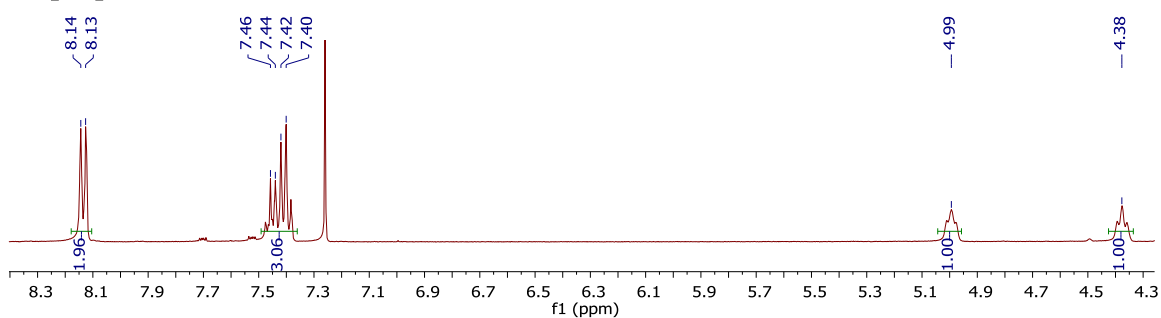


Figure S1. ^1H NMR spectrum (500 MHz, CDCl_3) of garciniacowone K (1).

ip9_190416_2.3.fid
GEP20_CDCl3_400



ip9_190416_2.3.fid
GEP20_CDCl3_400

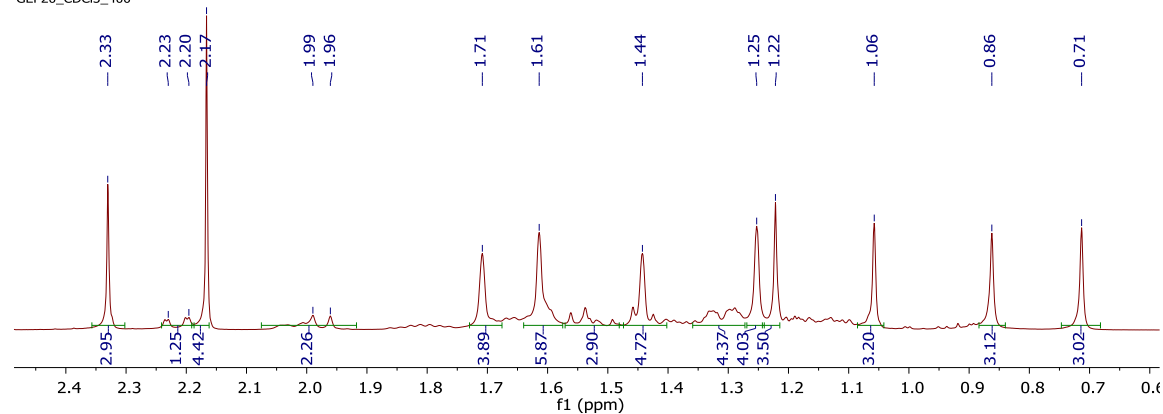


Figure S2. Expanded ^1H NMR spectrum (500 MHz, CDCl_3) of garciniacowone K (1).

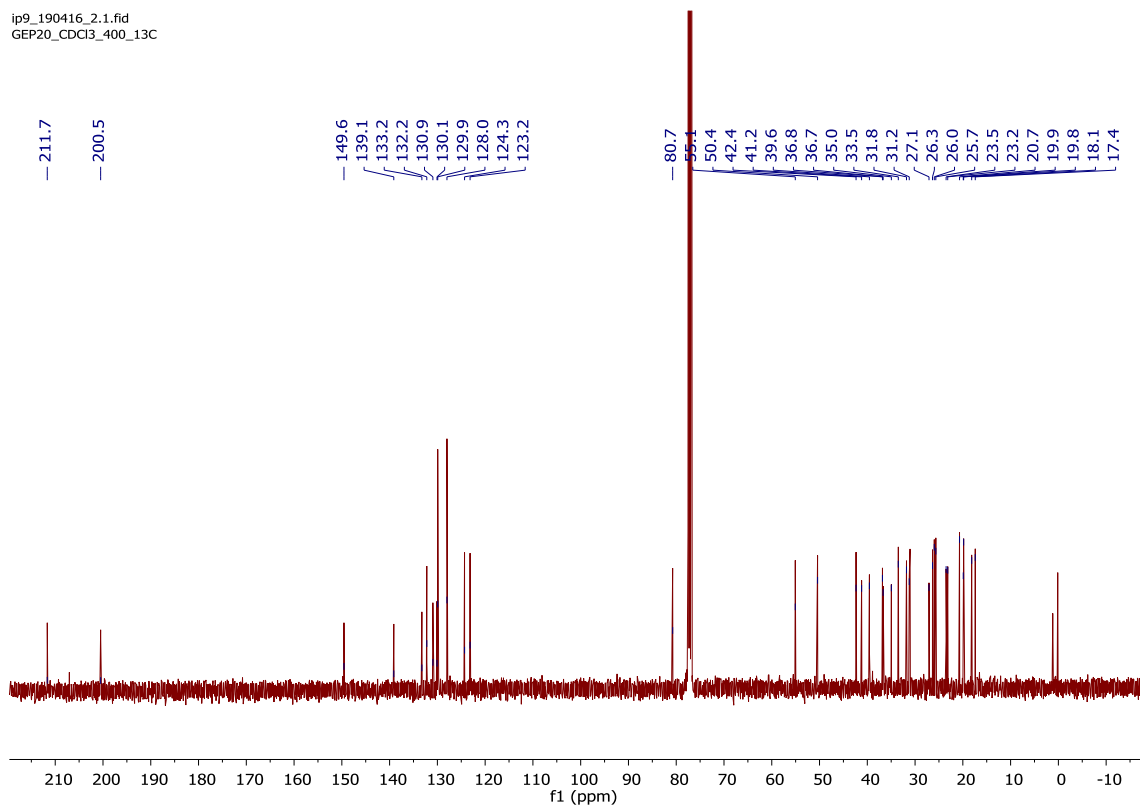


Figure S3. ^{13}C NMR spectrum (100 MHz, CDCl_3) of garciniacowone K (**1**).

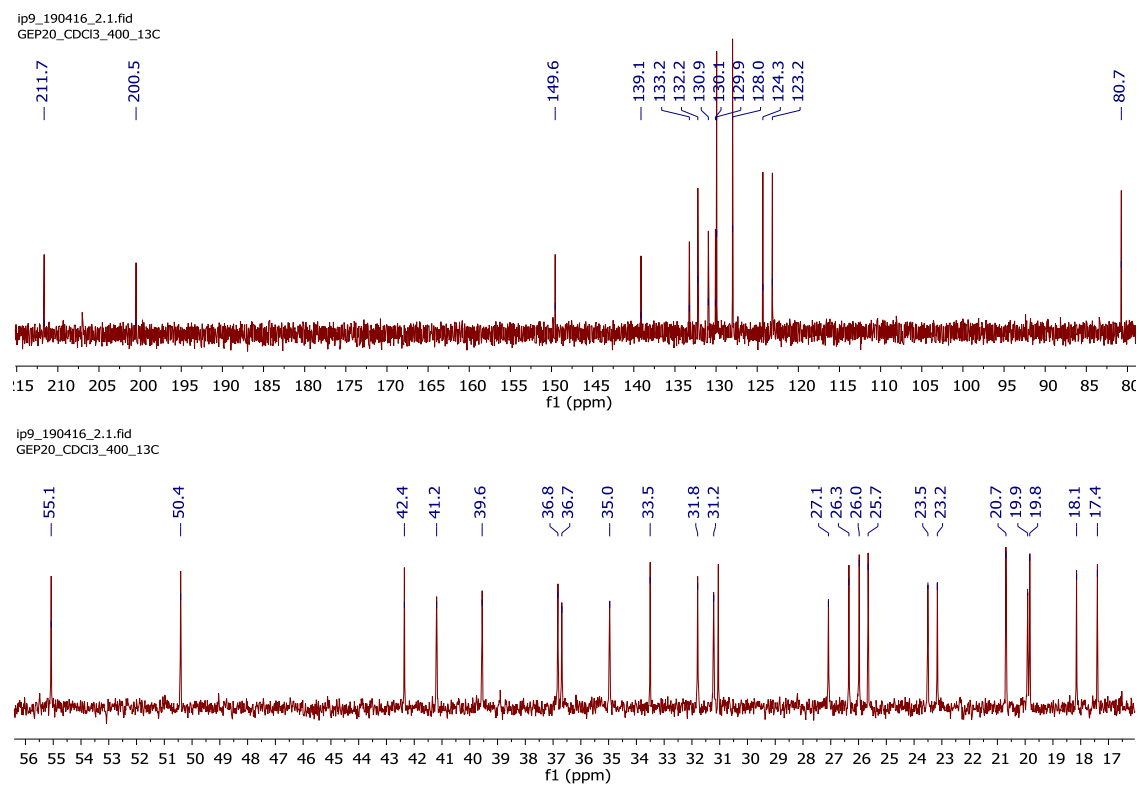


Figure S4. Expanded ^{13}C NMR spectrum of garciniacowone K (**1**).

ip9_190416_2.2.fid
GEP20_CDCl3_400_DEPT135

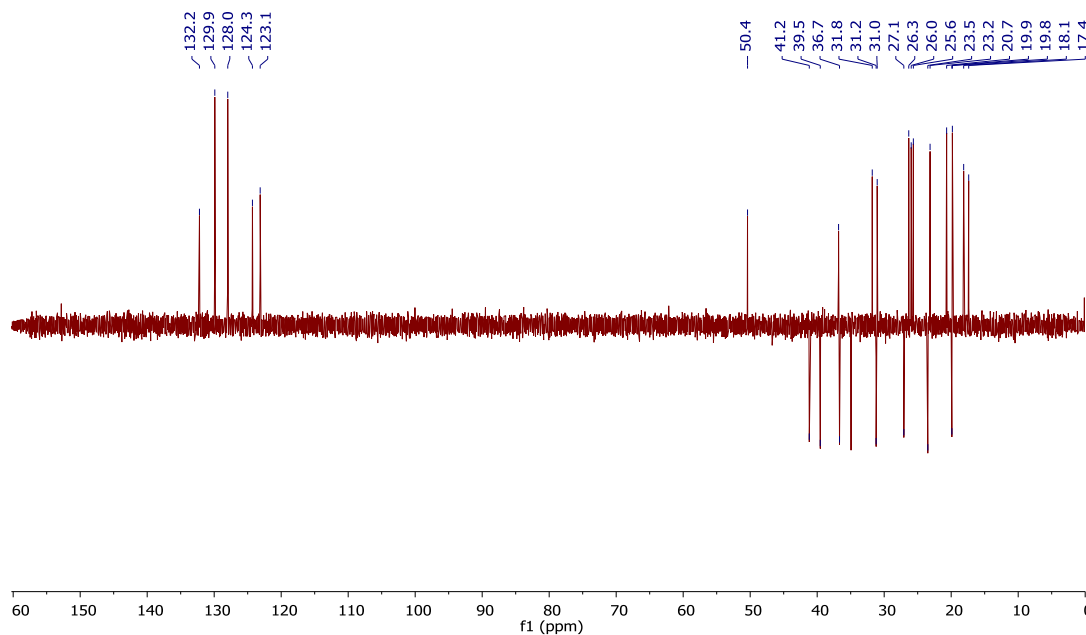
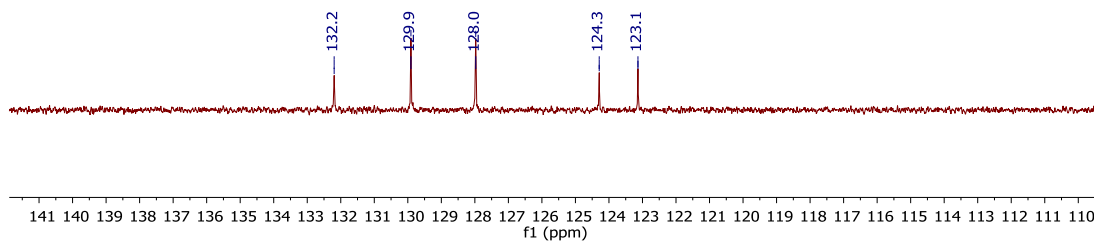


Figure S5. DEPT 135 spectrum of garciniacowone K (1).

ip9_190416_2.2.fid
GEP20_CDCl3_400_DEPT135



ip9_190416_2.2.fid
GEP20_CDCl3_400_DEPT135

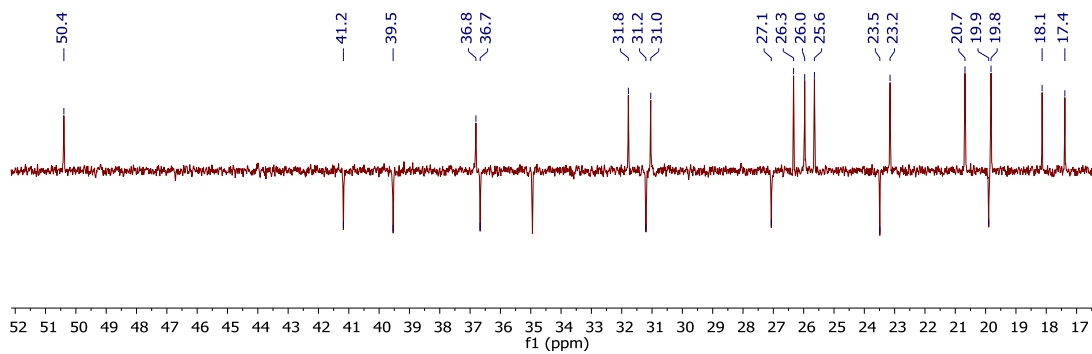


Figure S6. Expanded DEPT 135 spectrum of garciniacowone K (1).

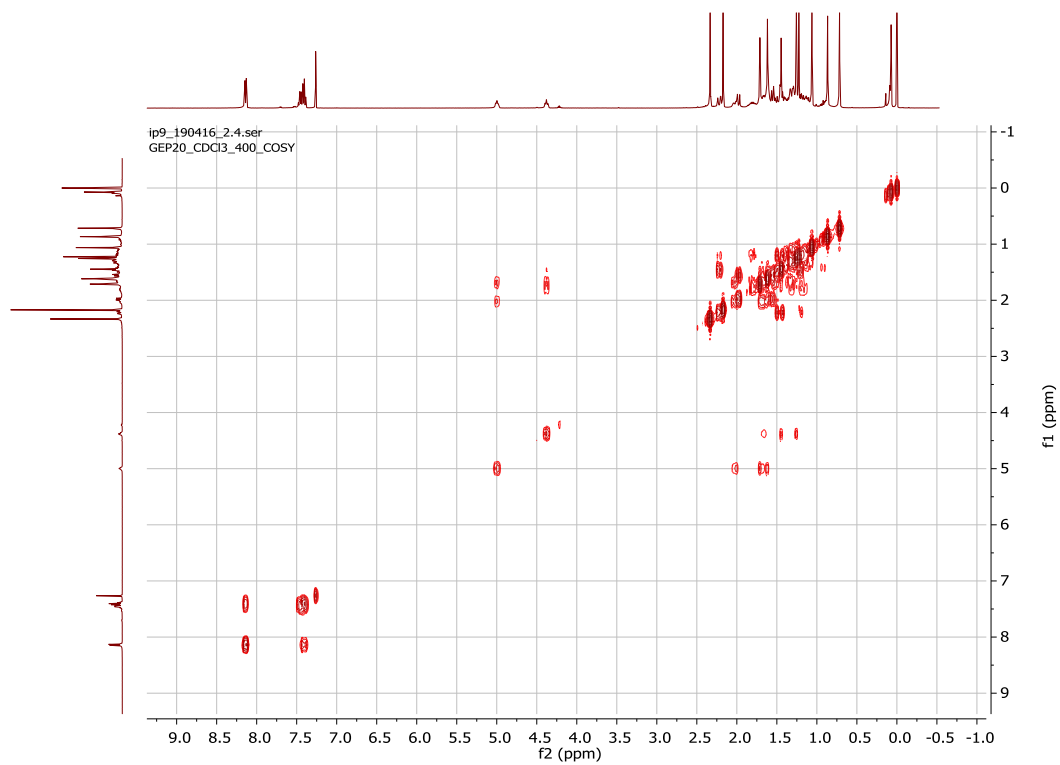


Figure S7. COSY spectrum of garciniacowone K (**1**)

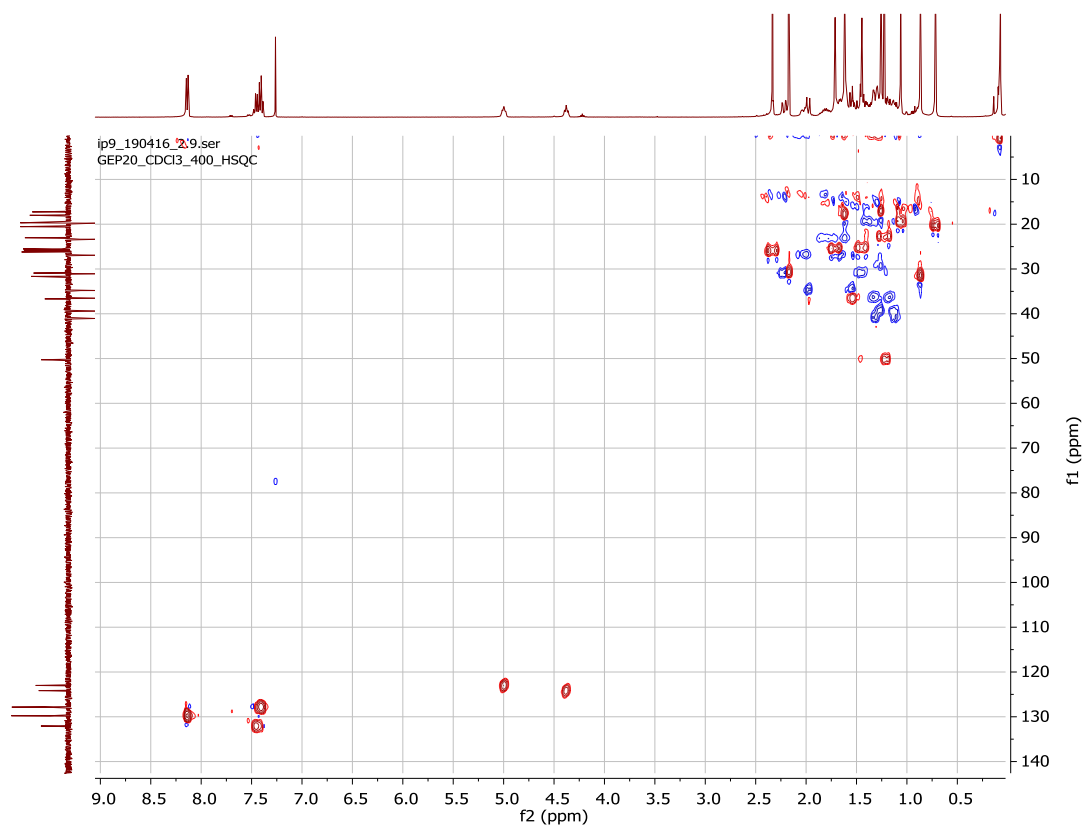


Figure S8. HSQC spectrum of garciniacowone K (**1**)

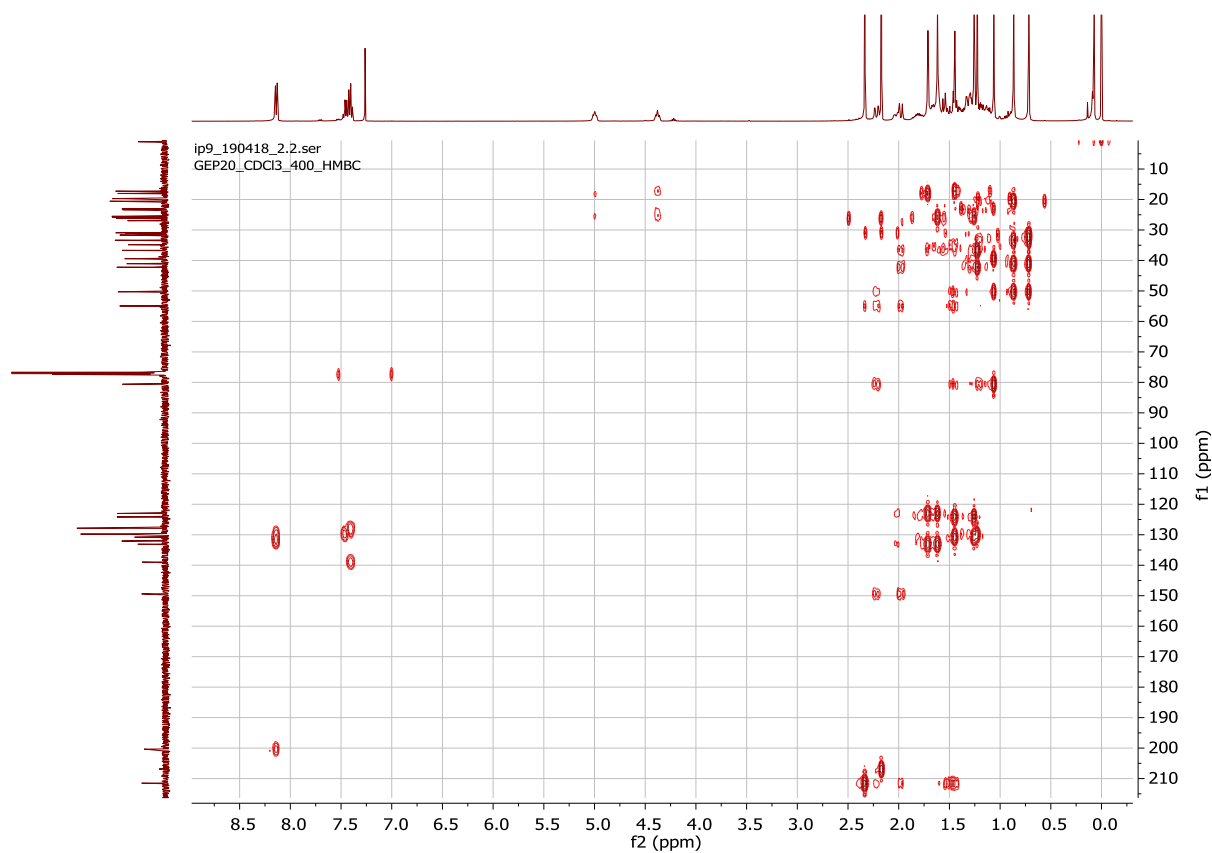


Figure S9. HMBC spectrum of garciniacowone K (**1**).

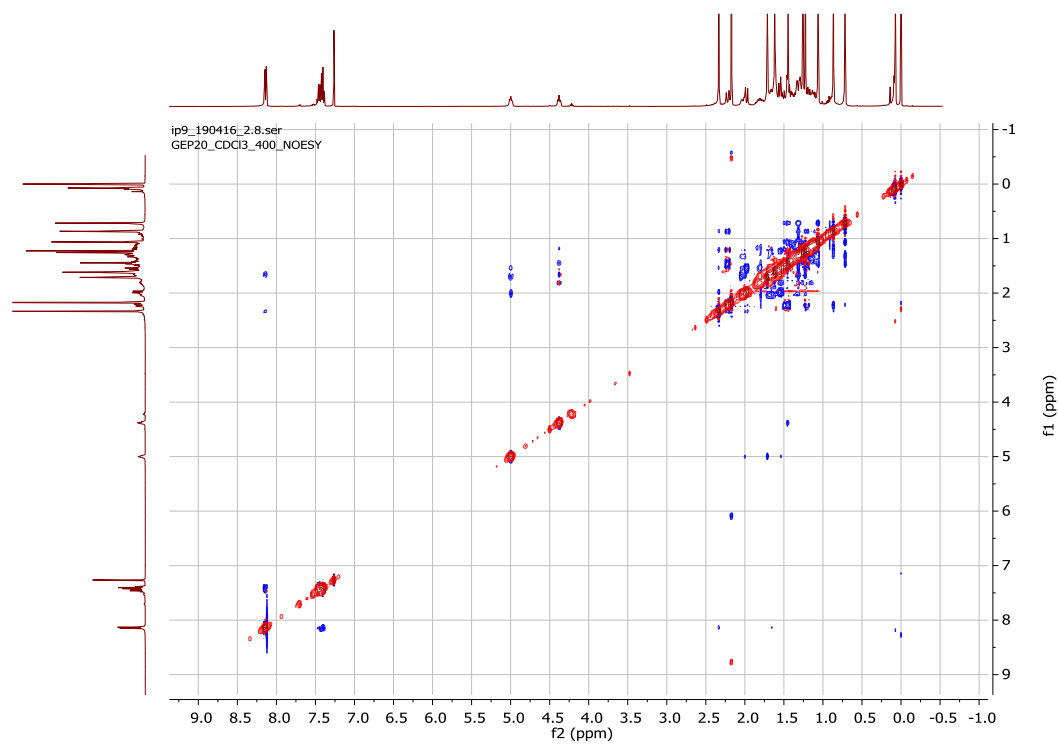


Figure S10. NOESY spectrum of garciniacowone K (**1**).

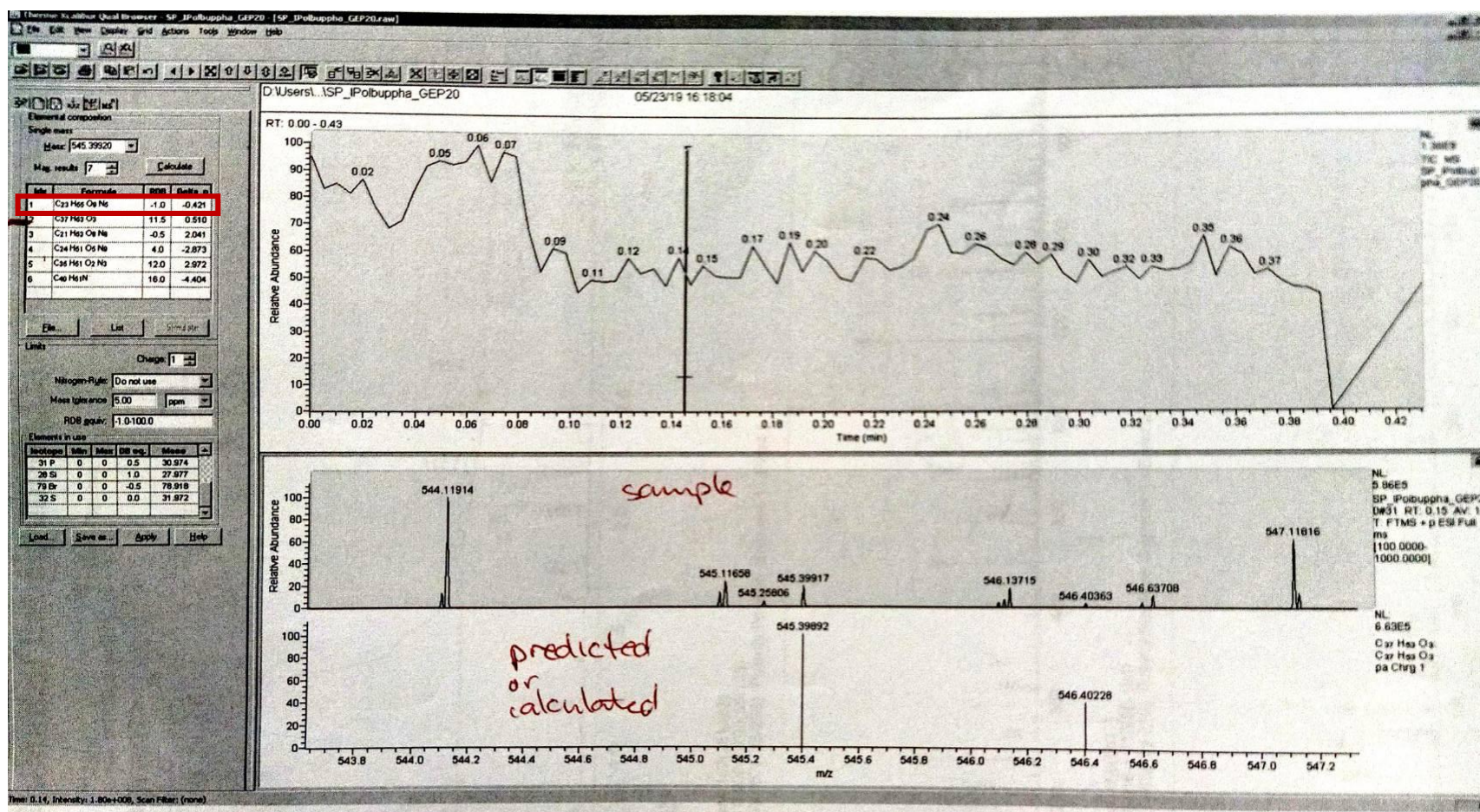


Figure S11. HRESITOFMS spectrum of garciniacowone K (1).