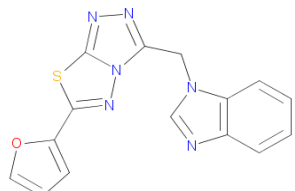
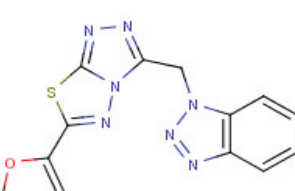
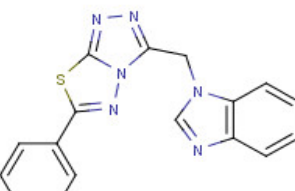
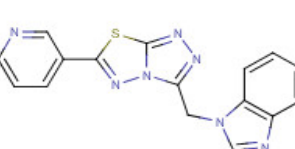
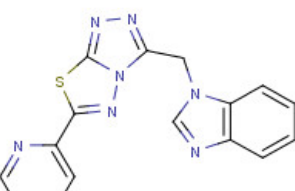
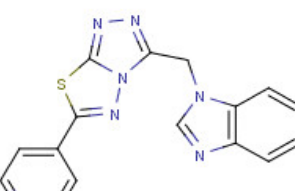
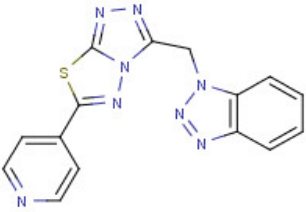
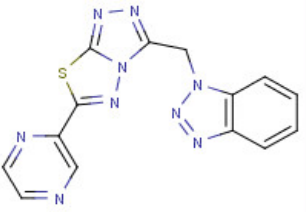
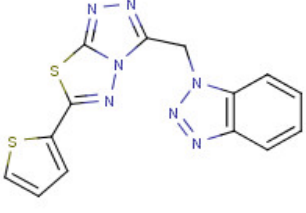
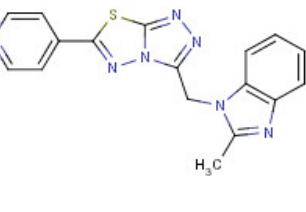
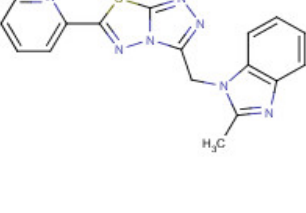
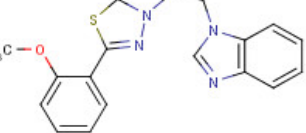
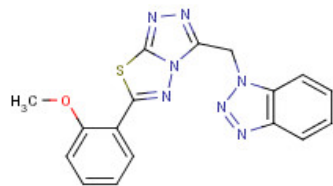


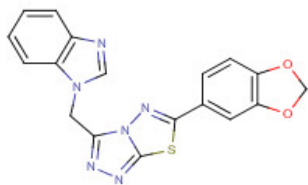
Evans et al. Table S1. Commercial Analogs of SRI 29365

Structures	ID	Supplier	EC50	CC50	SI50
	7962703 SRI 29365	ChemBridge	0.7	55.3	83.8
	7963817	ChemBridge	4.1	>100	>24.4
	7951242	ChemBridge	1.6	64.9	40.6
	7952897	ChemBridge	22.4	>100	>4.5
	7957456	ChemBridge	>100	>100	1.0
	7959537	ChemBridge	>100	100.0	1.0

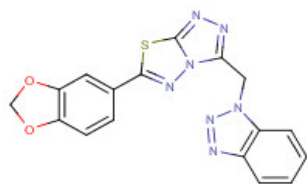
	7957171	ChemBridge	>100	>100	1.0
	7959559	ChemBridge	>100	96.0	1.0
	7950290	ChemBridge	>100	>100	1.0
	9058548	ChemBridge	>100	57.7	<1
	9058560	ChemBridge	>100	71.9	<1
	7950781	ChemBridge	>100	12.7	<1



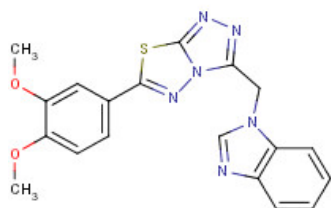
7958570 ChemBridge >100 30.6 <1



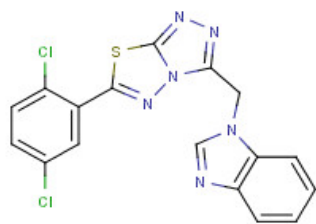
9005346 ChemBridge >100 100.0 >1



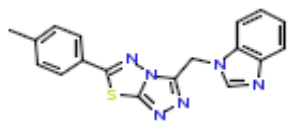
9007351 ChemBridge >100 100.0 1.0



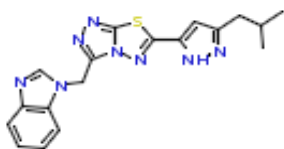
7950520 ChemBridge >100 >100 1.0



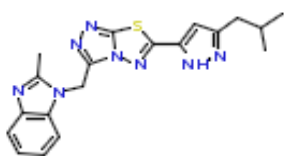
7954246 ChemBridge >100 95.1 <1



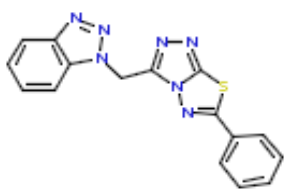
9268036 ChemBridge >100 >100 1.0



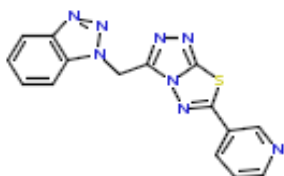
FOCK6S-384|InterBioScreen >100 >100 1.0



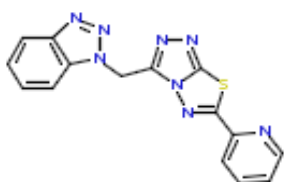
FOCK6S-339|InterBioScreen >100 18.4 <1



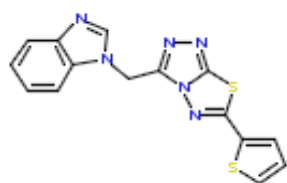
STK824322 VitasMLab 1.8 52.0 28.9



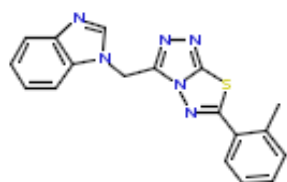
STK506606 VitasMLab >100 >100 1.0



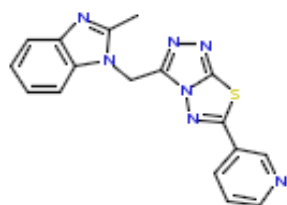
STK500073 VitasMLab 31.3 100.0 3.2



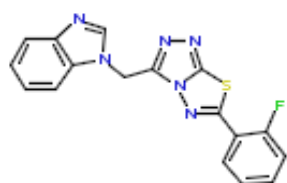
STK824319 VitasMLab 0.2 90.1 391.7



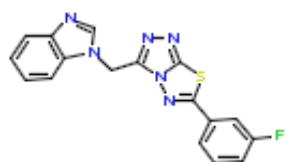
STK506581 VitasMLab 9.7 17.6 1.8



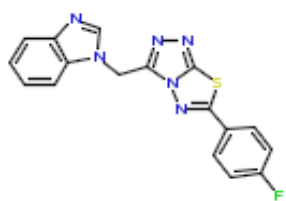
STK318490 VitasMLab >100 60.7 <1



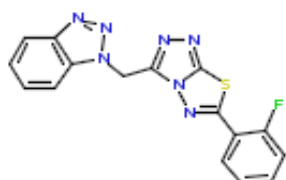
STK824310 VitasMLab 1.0 20.5 20.5



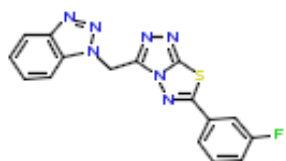
STK824311 VitasMLab 0.9 30.0 34.1



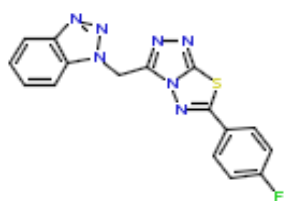
STK824312 VitasMLab 8.1 26.8 3.3



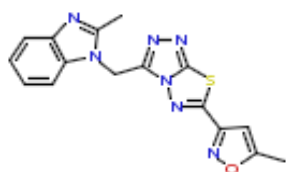
STK506594 VitasMLab 7.5 100.0 13.3



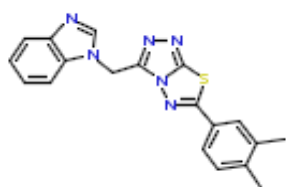
STK824325 VitasMLab 8.5 100.0 11.8



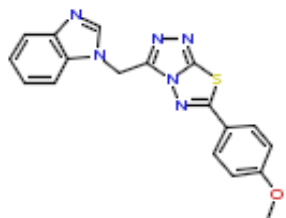
STK824326 VitasMLab >100 >100 1.0



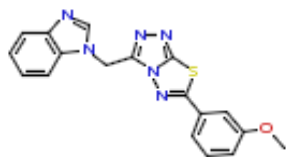
STK708701 VitasMLab >100 59.0 <1



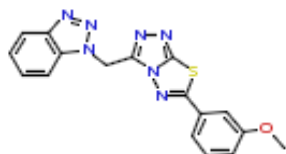
STL099067 VitasMLab >100 89.6 <1



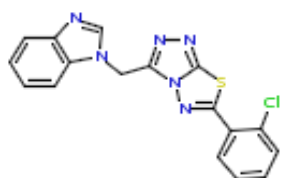
STK824315 VitasMLab >100 35.5 <1



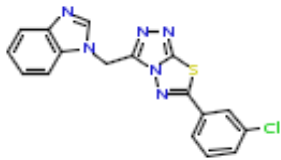
STK824314 VitasMLab >100 11.1 <1



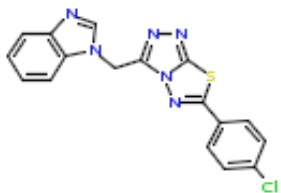
STK824328 VitasMLab >100 >100 1.0



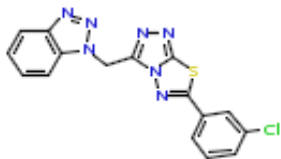
STK506584 VitasMLab 11.1 27.0 2.4



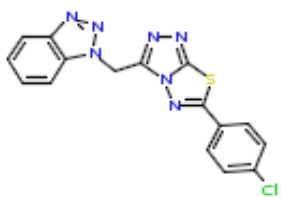
STK506585 VitasMLab 3.4 45.0 13.2



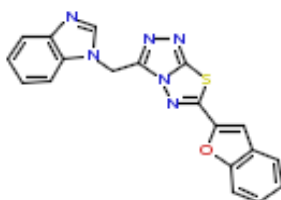
STK824309 VitasMLab >100 >100 1.0



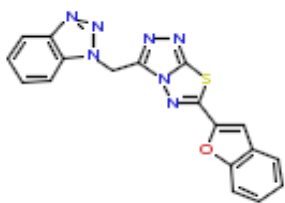
STK824324 VitasMLab >100 >100 1.0



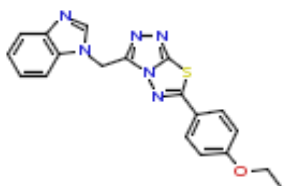
STK506593 VitasMLab 27.2 52.4 1.9



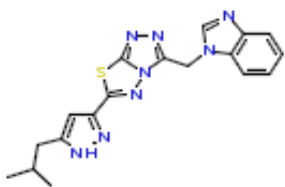
STK205192 VitasMLab >100 >100 1.0



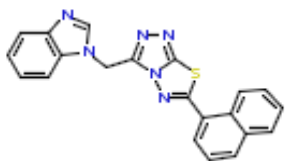
STK506603 VitasMLab >100 >100 1.0



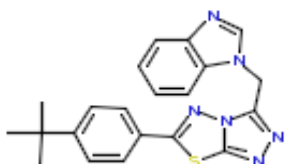
STK506586 VitasMLab >100 100.0 1.0



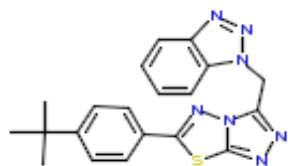
STK624368 VitasMLab >100 >100 1.0



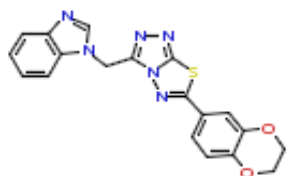
STK824321 VitasMLab >100 >100 1.0



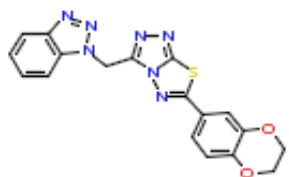
STK205190 VitasMLab >100 26.8 <1



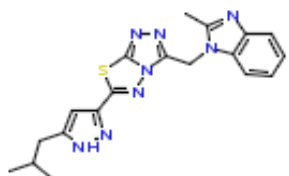
STK824323 VitasMLab >100 34.0 <1



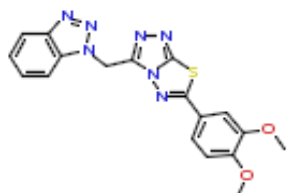
STK500067 VitasMLab >100 12.6 <1



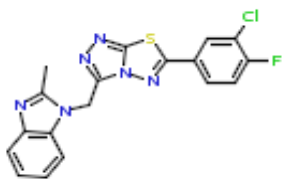
STK506604 VitasMLab >100 >100 1.0



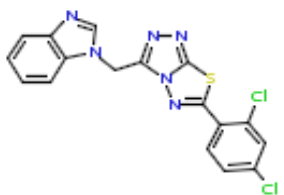
STK629571 VitasMLab >100 43.2 <1



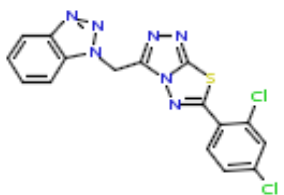
STK824329 VitasMLab >100 >100 1.0



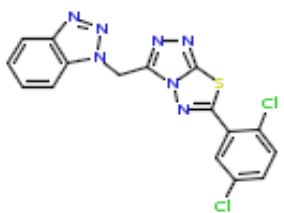
STK625382 VitasMLab >100 7.4 <1



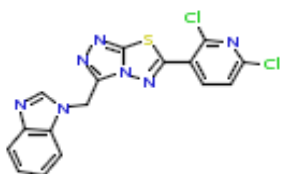
STK500059 VitasMLab >100 83.3 <1



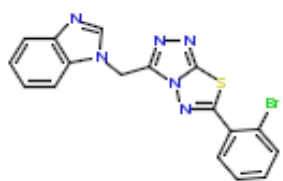
STK708137 VitasMLab >100 >100 1.0



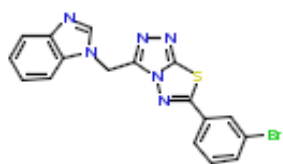
STK824327 VitasMLab >100 >100 1.0



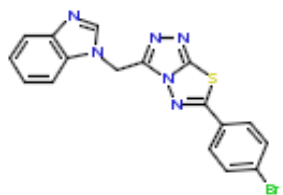
STK640316 VitasMLab >100 19.2 <1



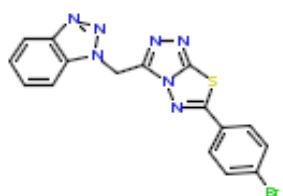
STK506582 VitasMLab >100 23.1 <1



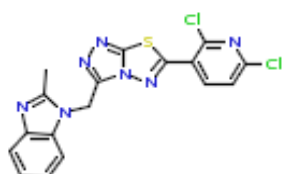
STK500058 VitasMLab 8.6 >100 >11,6



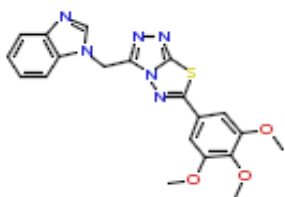
STK506583 VitasMLab >100 >100 1.0



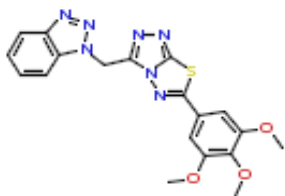
STK883830 VitasMLab >100 >100 1.0



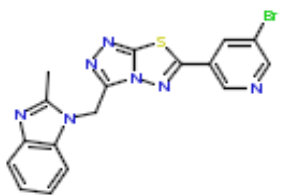
STK631506 VitasMLab >100 >100 1.0



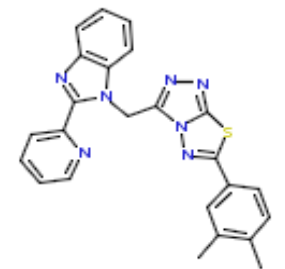
STK883826 VitasMLab >100 >100 1.0



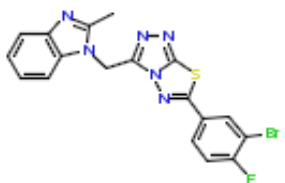
STK506595 VitasMLab >100 >100 1.0



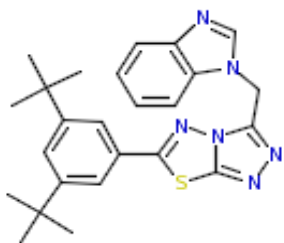
STK626441 VitasMLab >100 40.0 <1



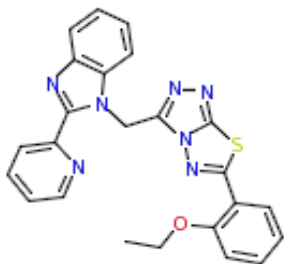
STK353657 VitasMLab >100 >100 1.0



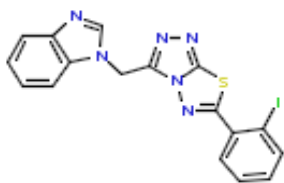
STK946299 VitasMLab >100 9.7 <1



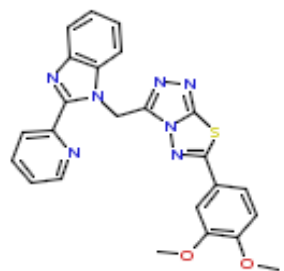
STK500057 VitasMLab >100 1.3 <1



STK353658 VitasMLab >100 1.3 <1



STL099068 VitasMLab >100 55.9 <1



STK500094 VitasMLab >100 >100 1.0