

Figure S7. *rpiA* and *rpiA2* are needed to maintain *Y. pestis* in the proventriculus after feeding. Fluorescence images of the proventriculus (in green) infected with the WT, $\Delta rpiA$ or $\Delta rpiA \Delta rpiA2$ strains (in blue) before and immediately after feeding, acquired 2, 6 and 13 days post-infection.

BEFORE FEEDING

AFTER FEEDING

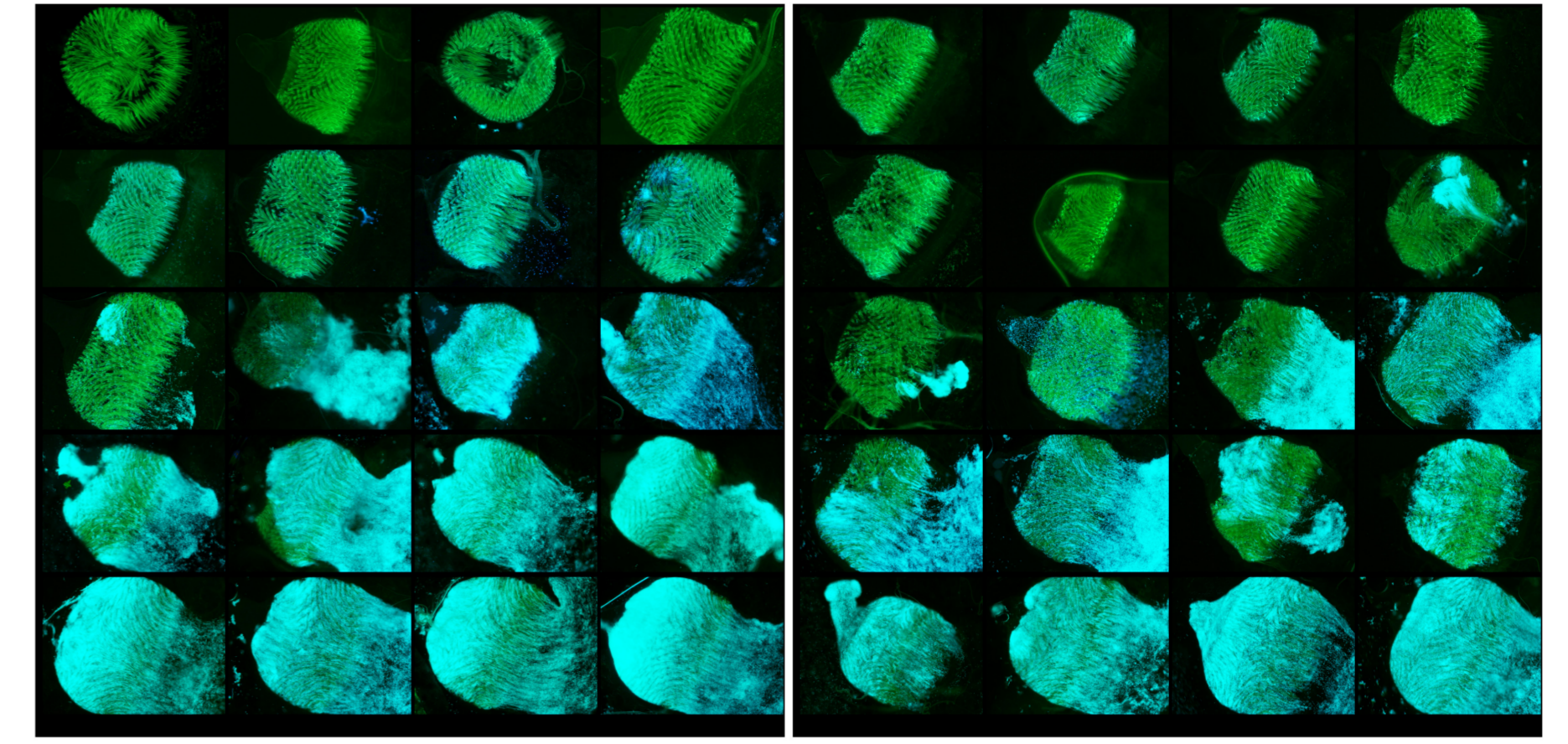
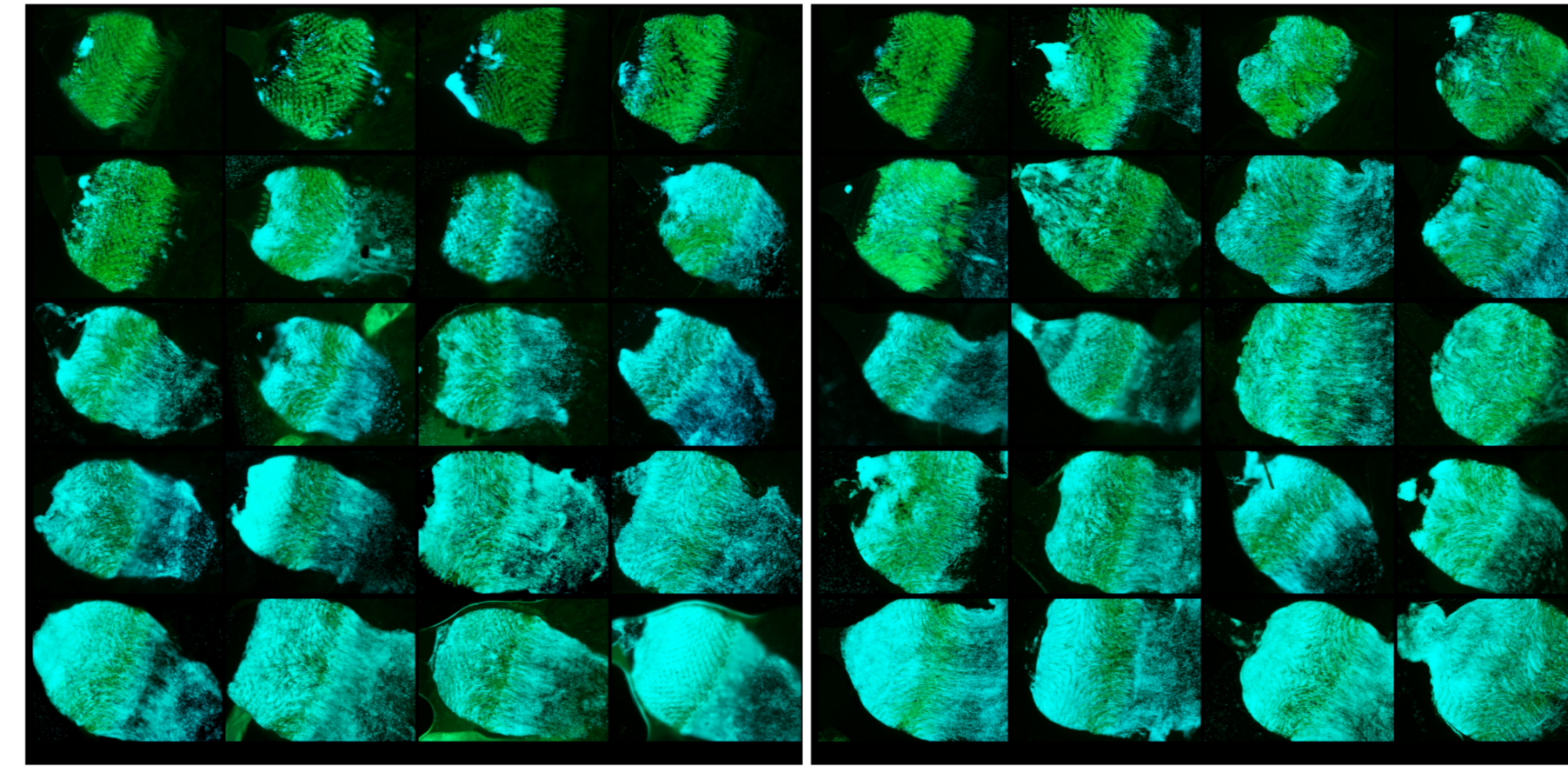
Exp_4

Exp_5

Exp_4

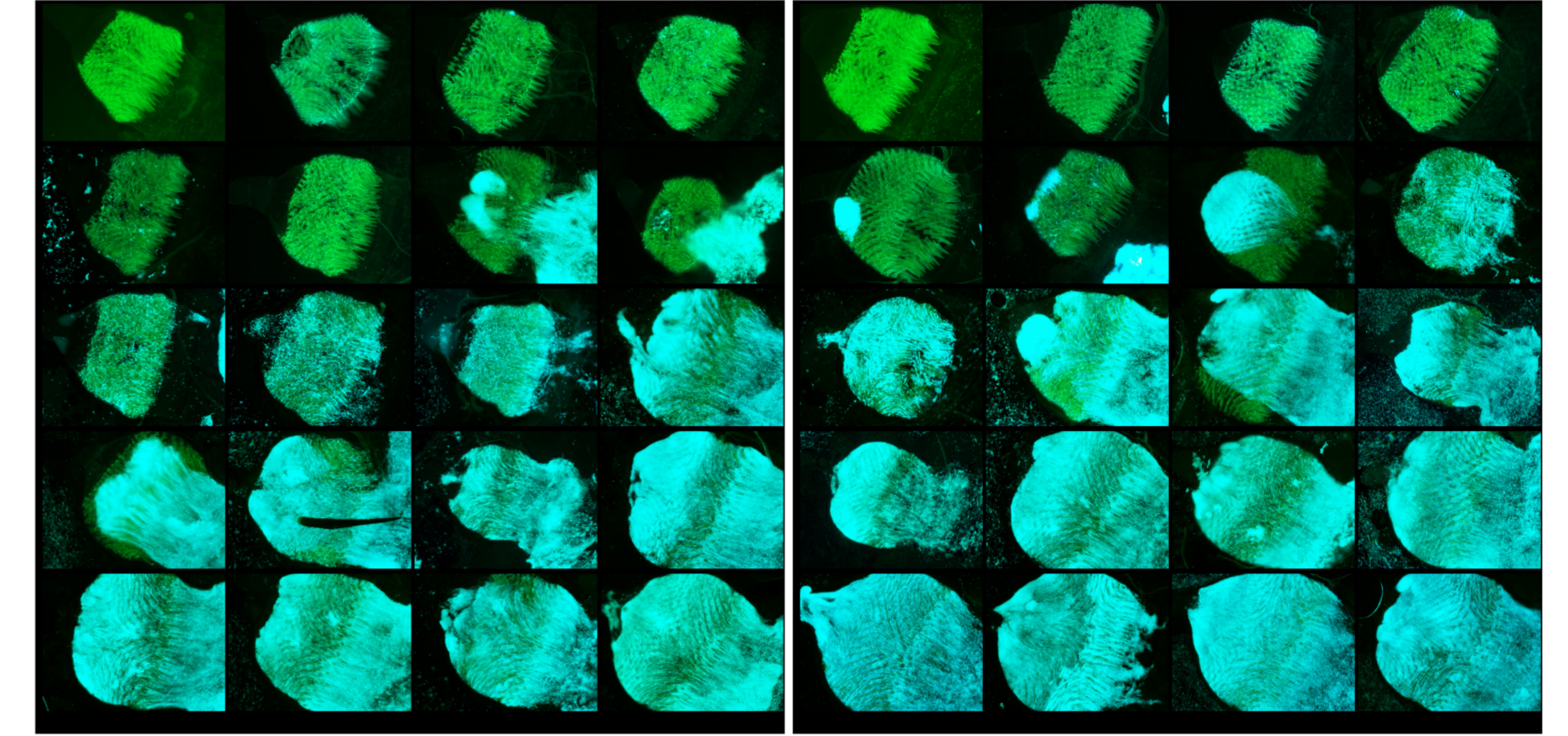
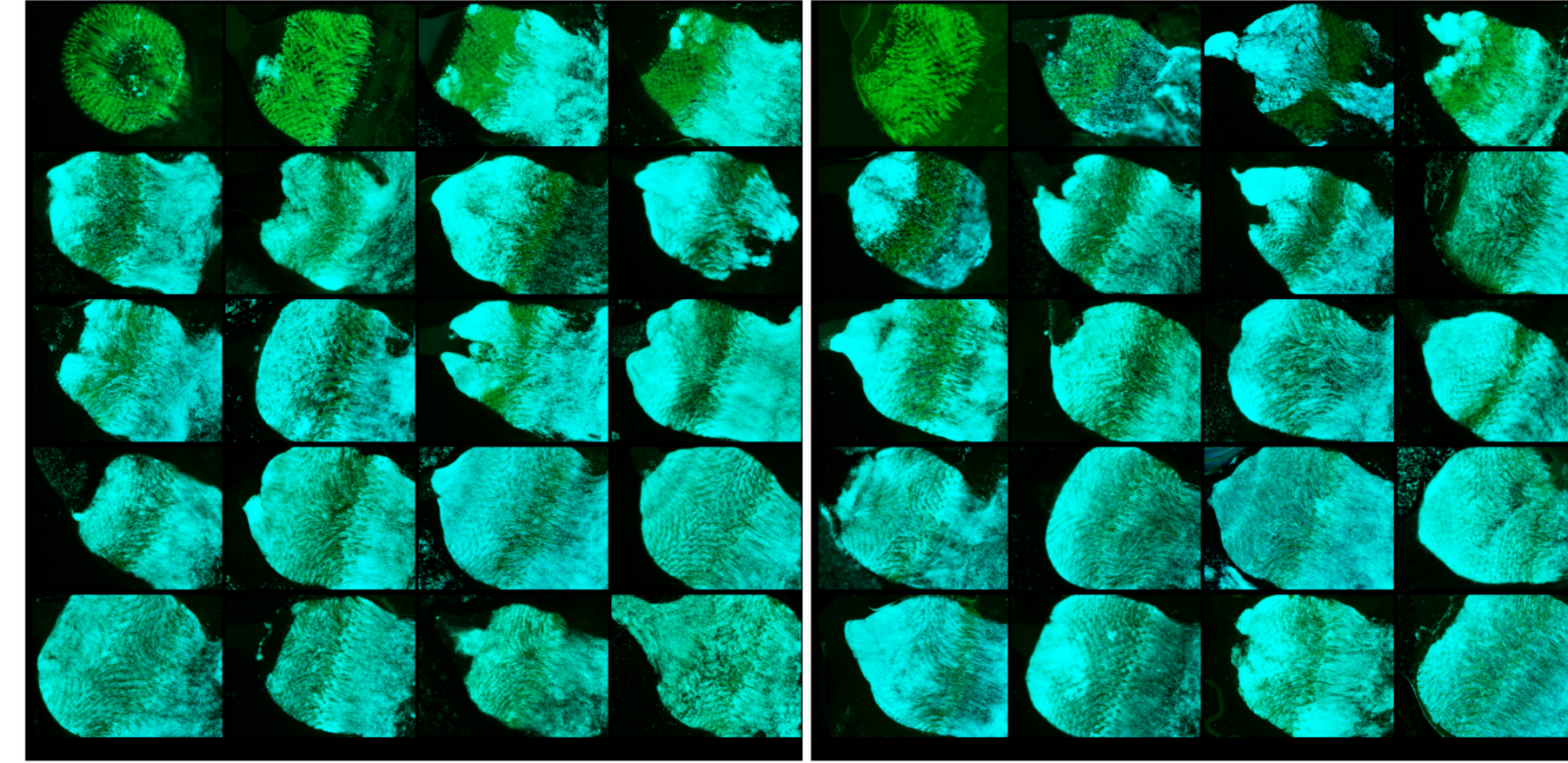
Exp_5

D2

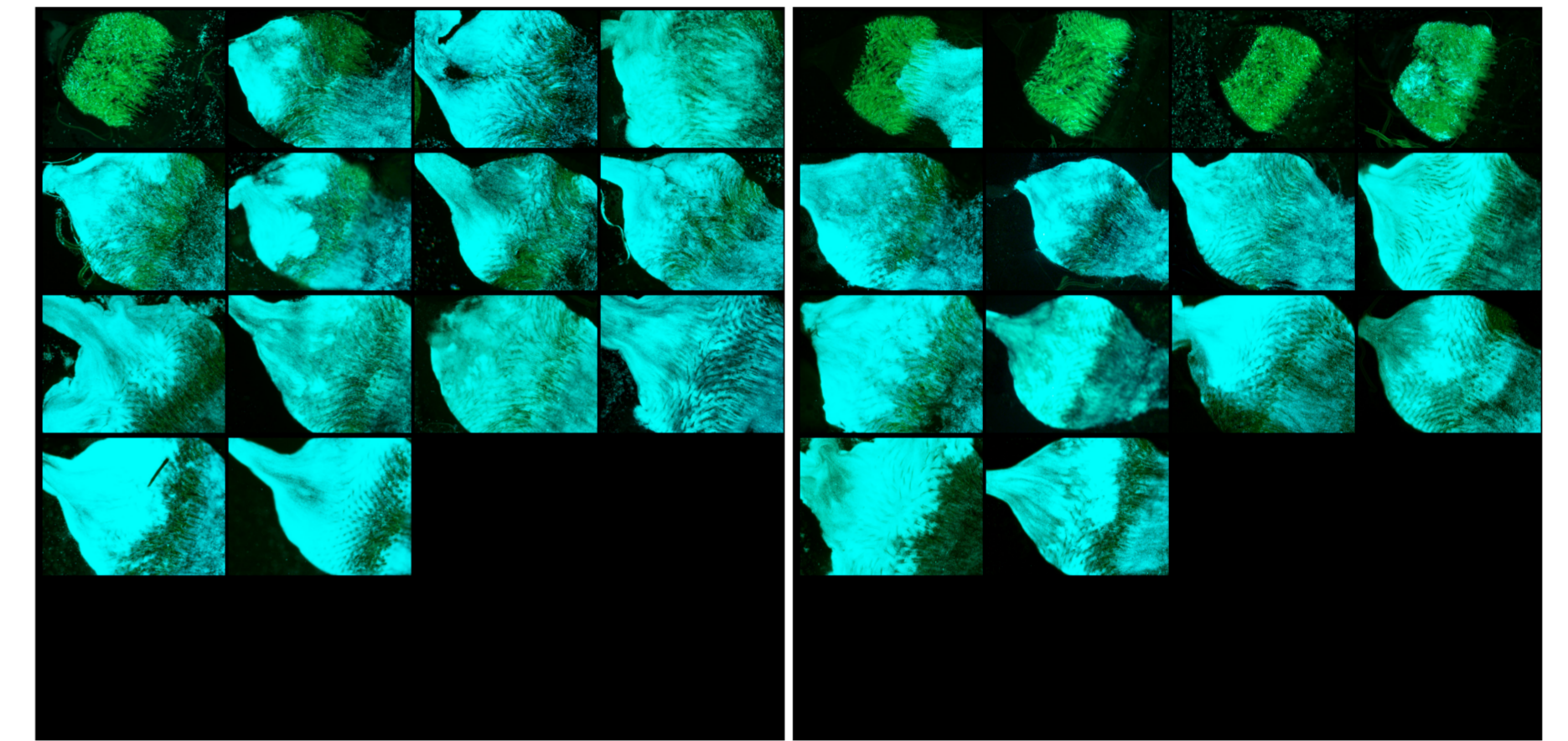
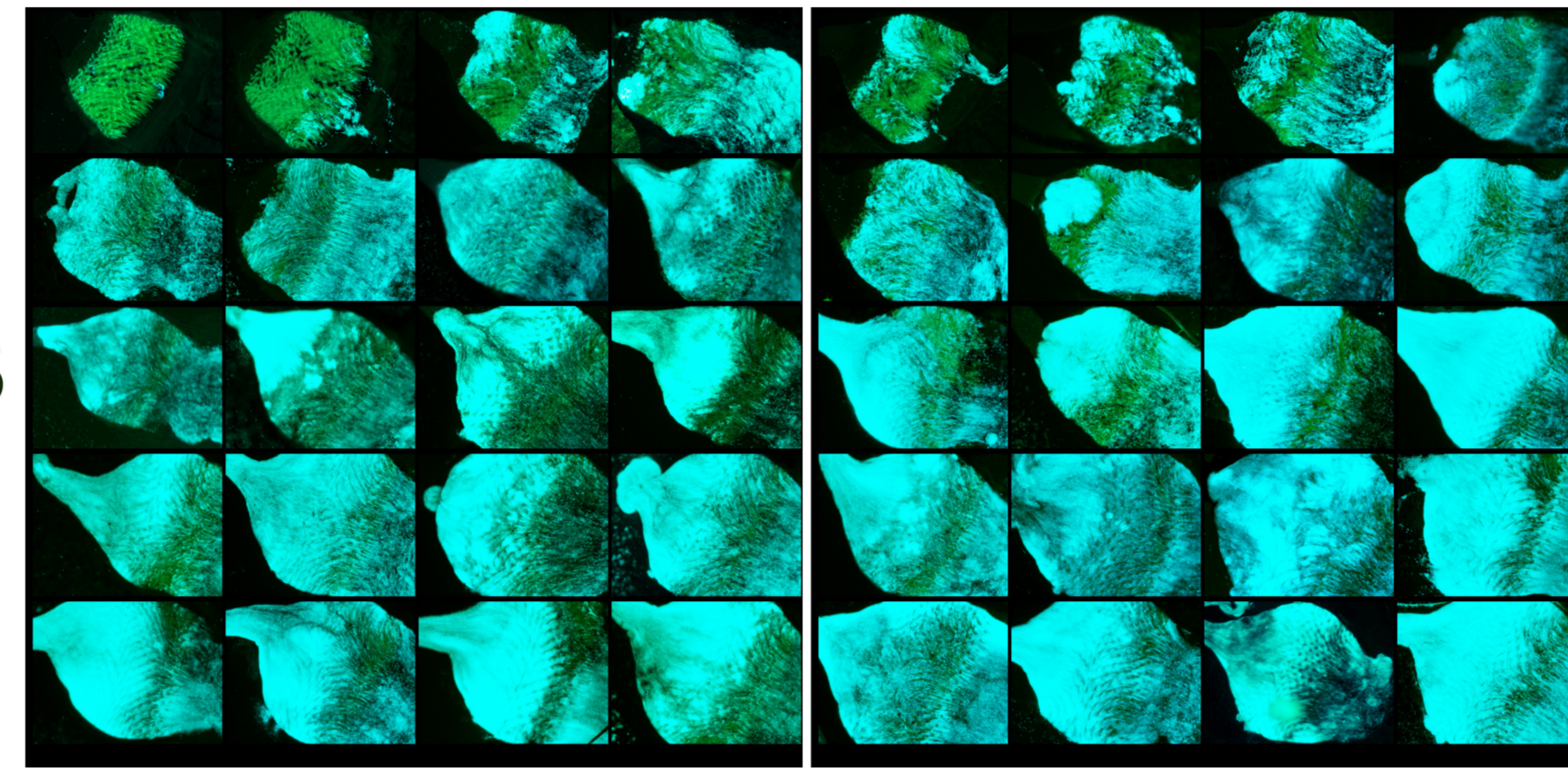


WT

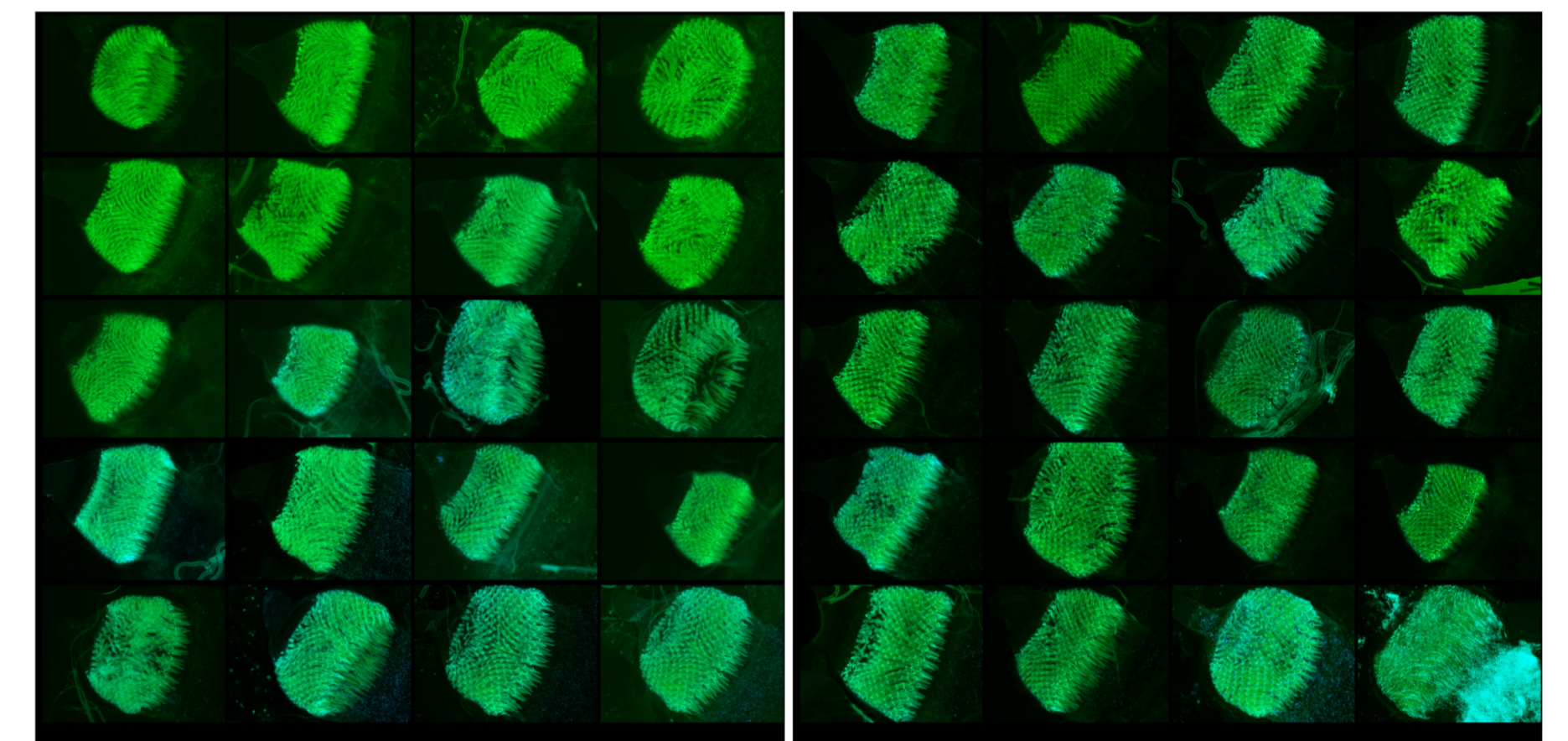
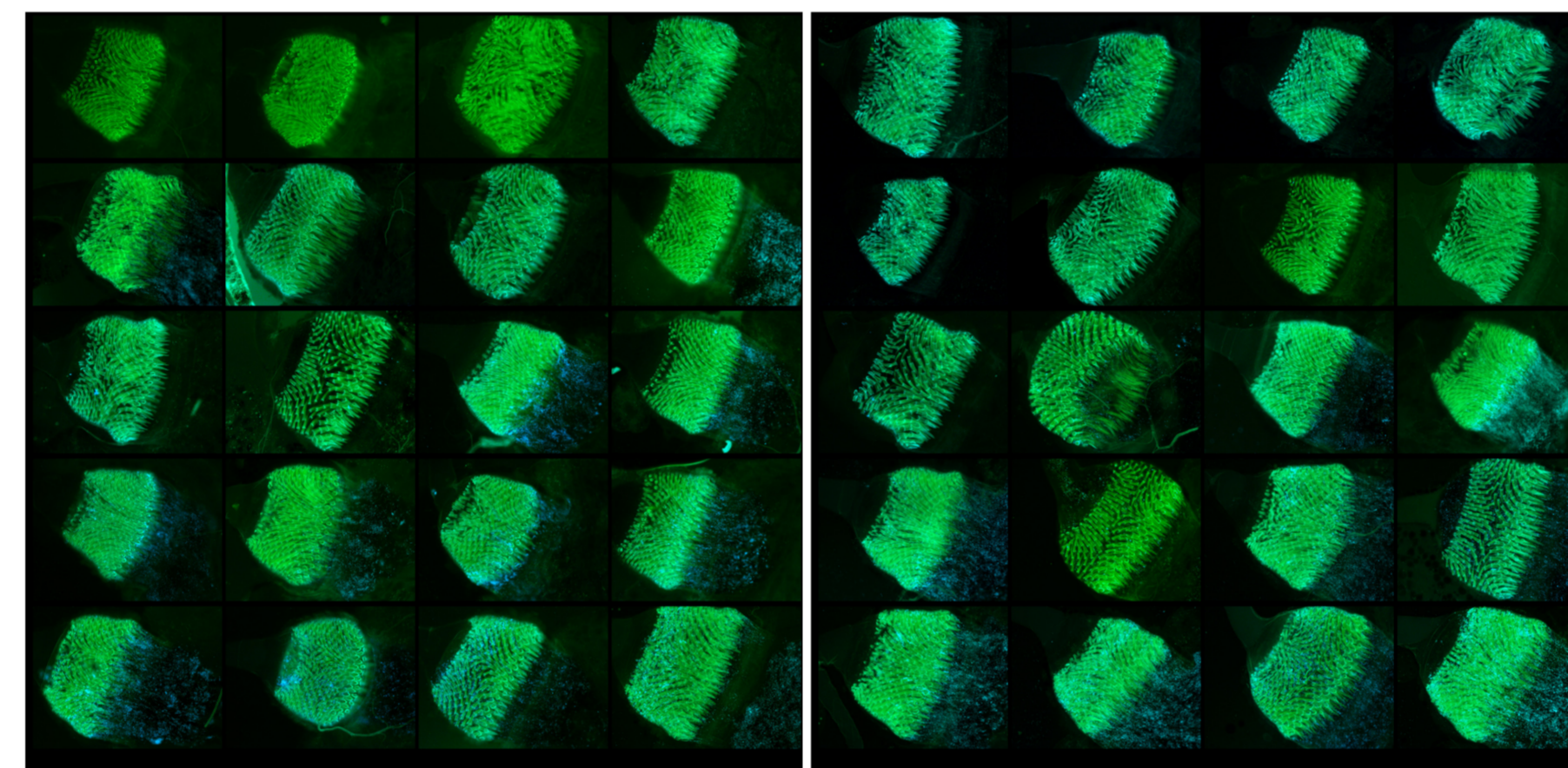
D6



D13

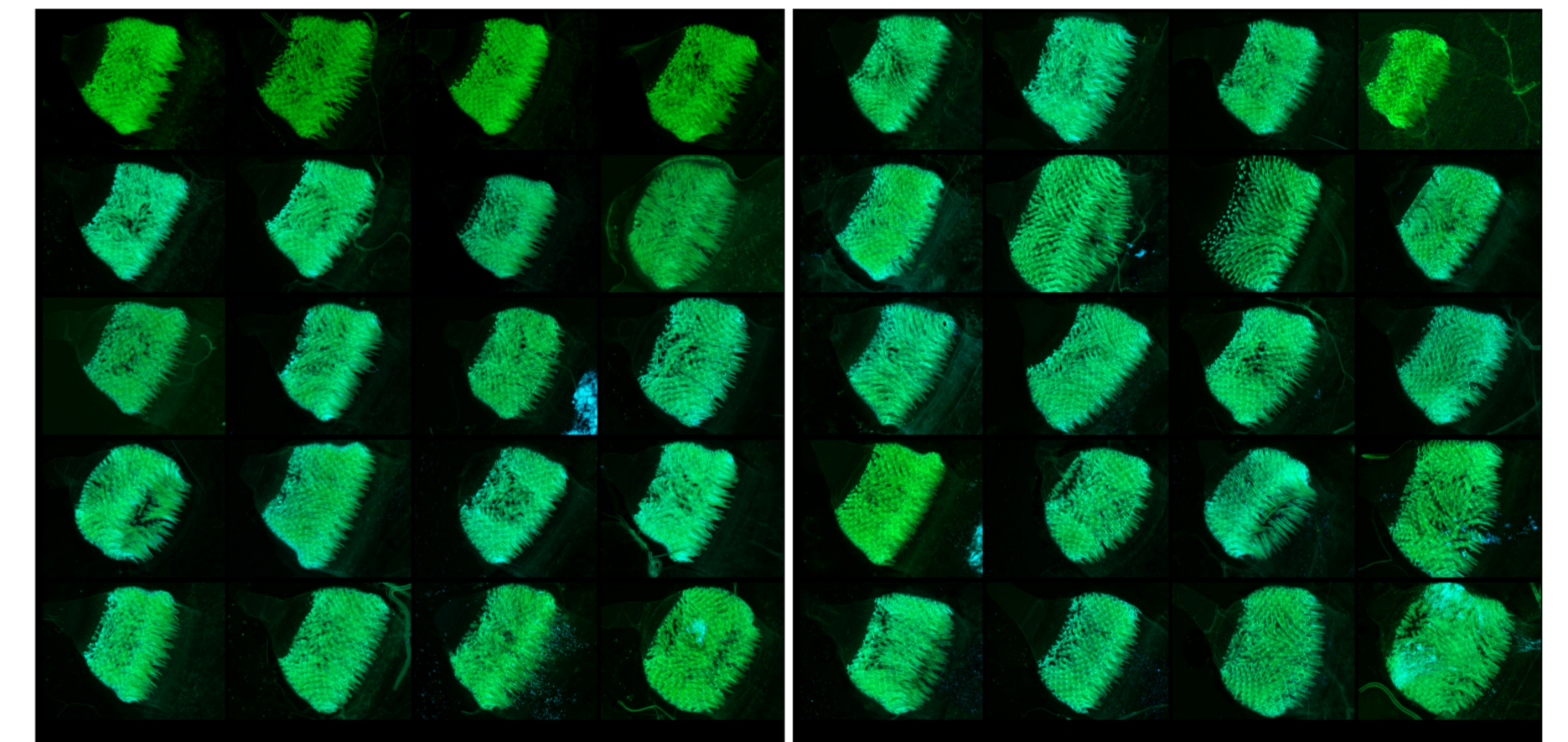
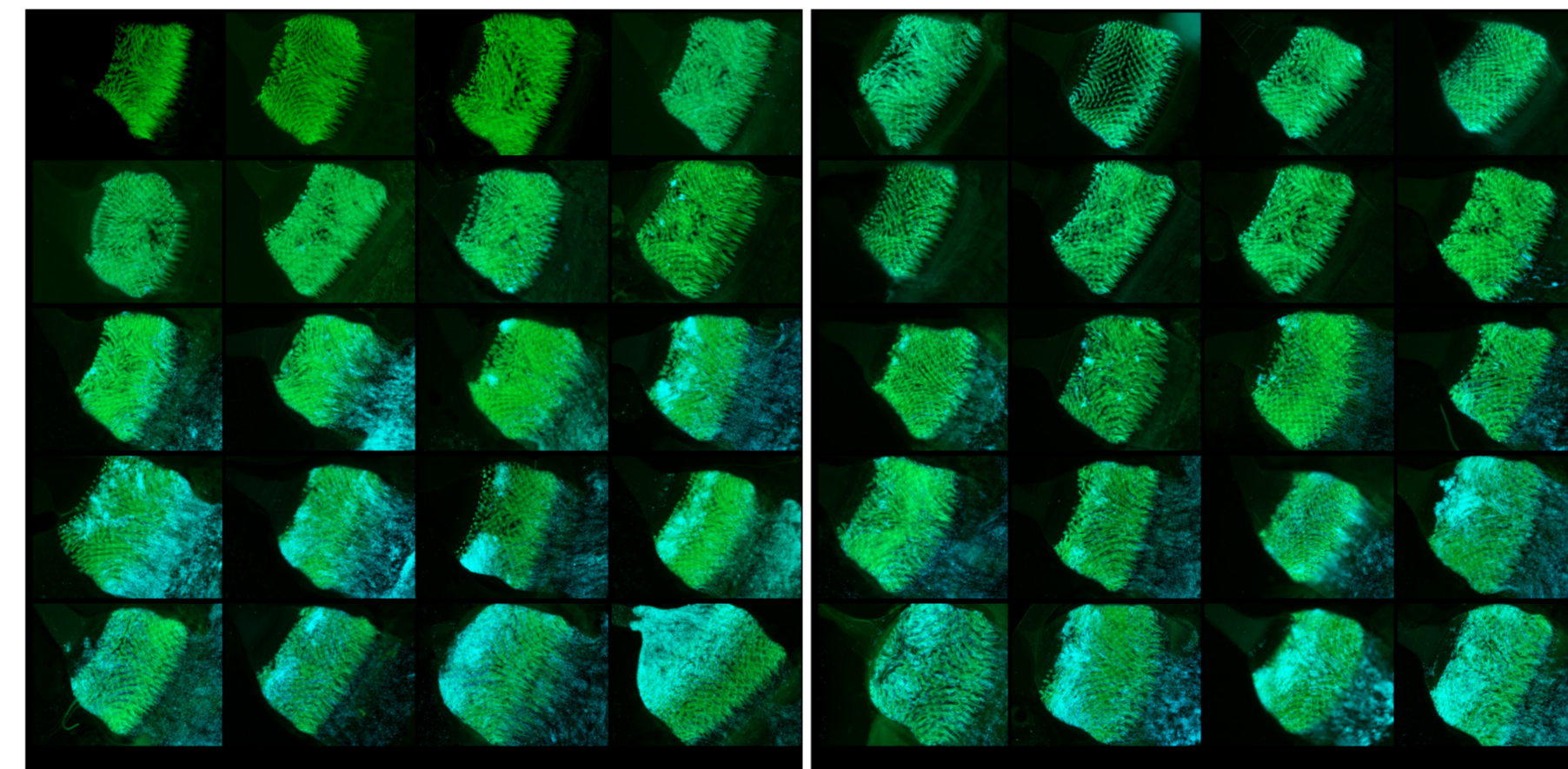


D2

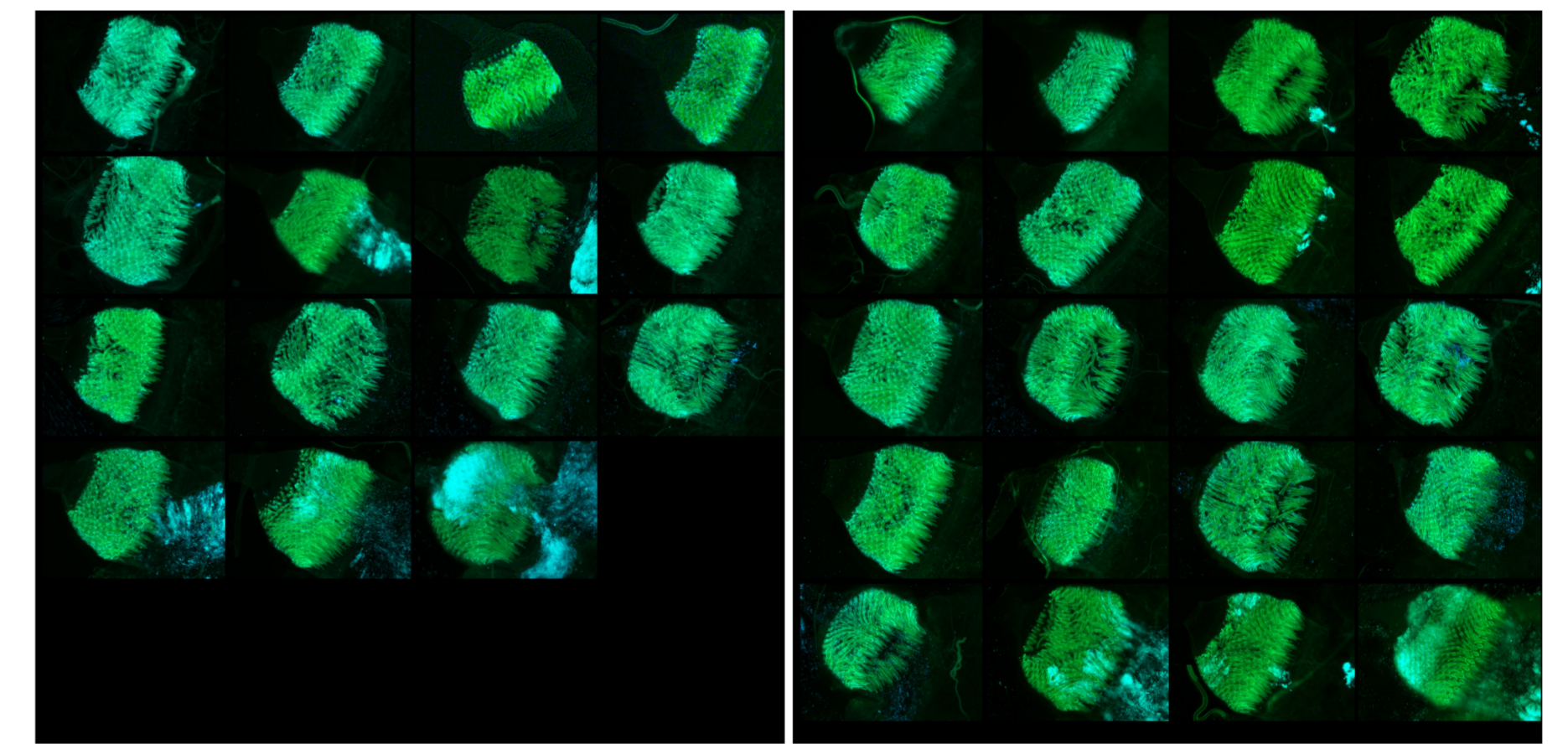
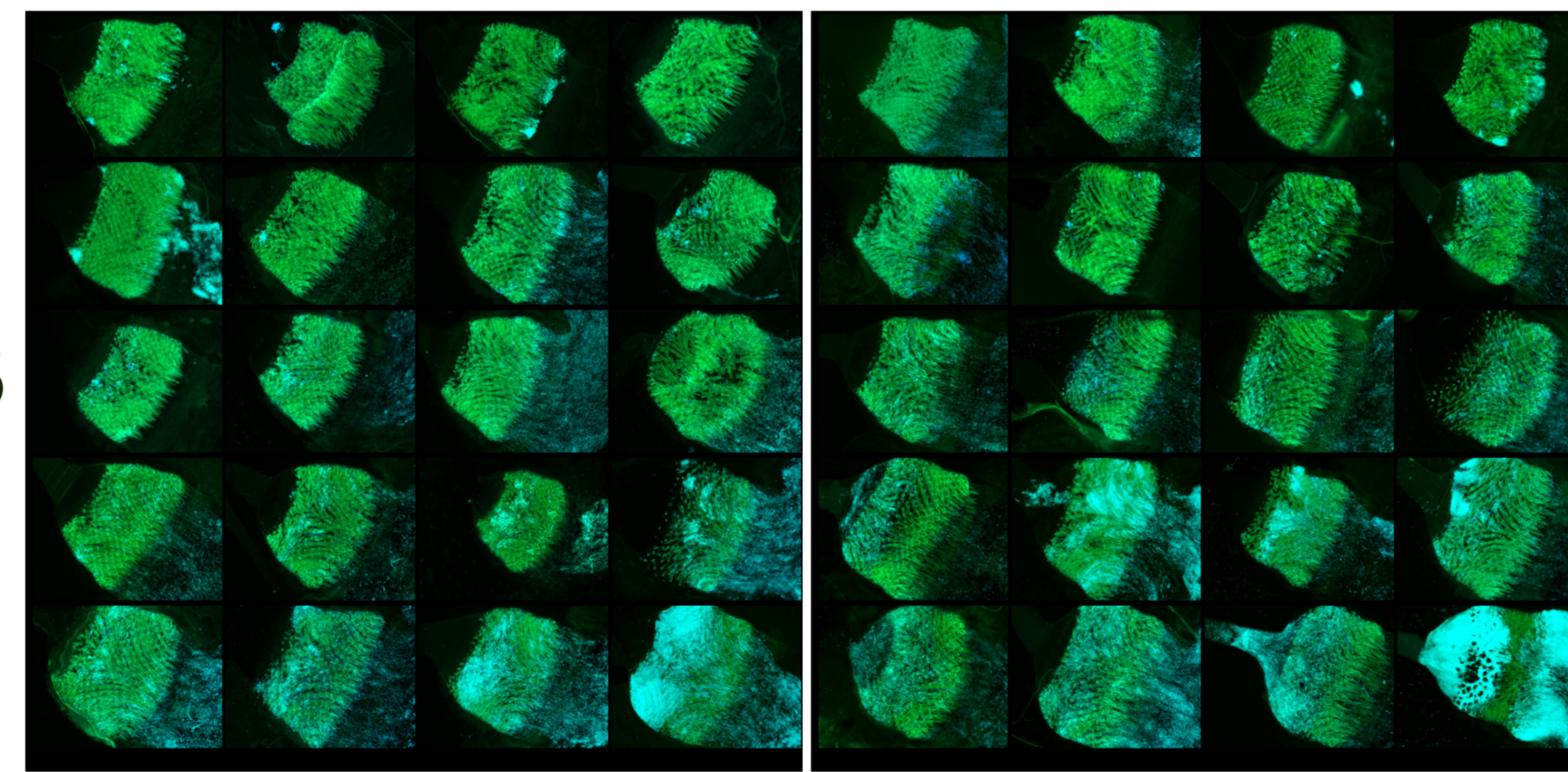


ΔrpiA

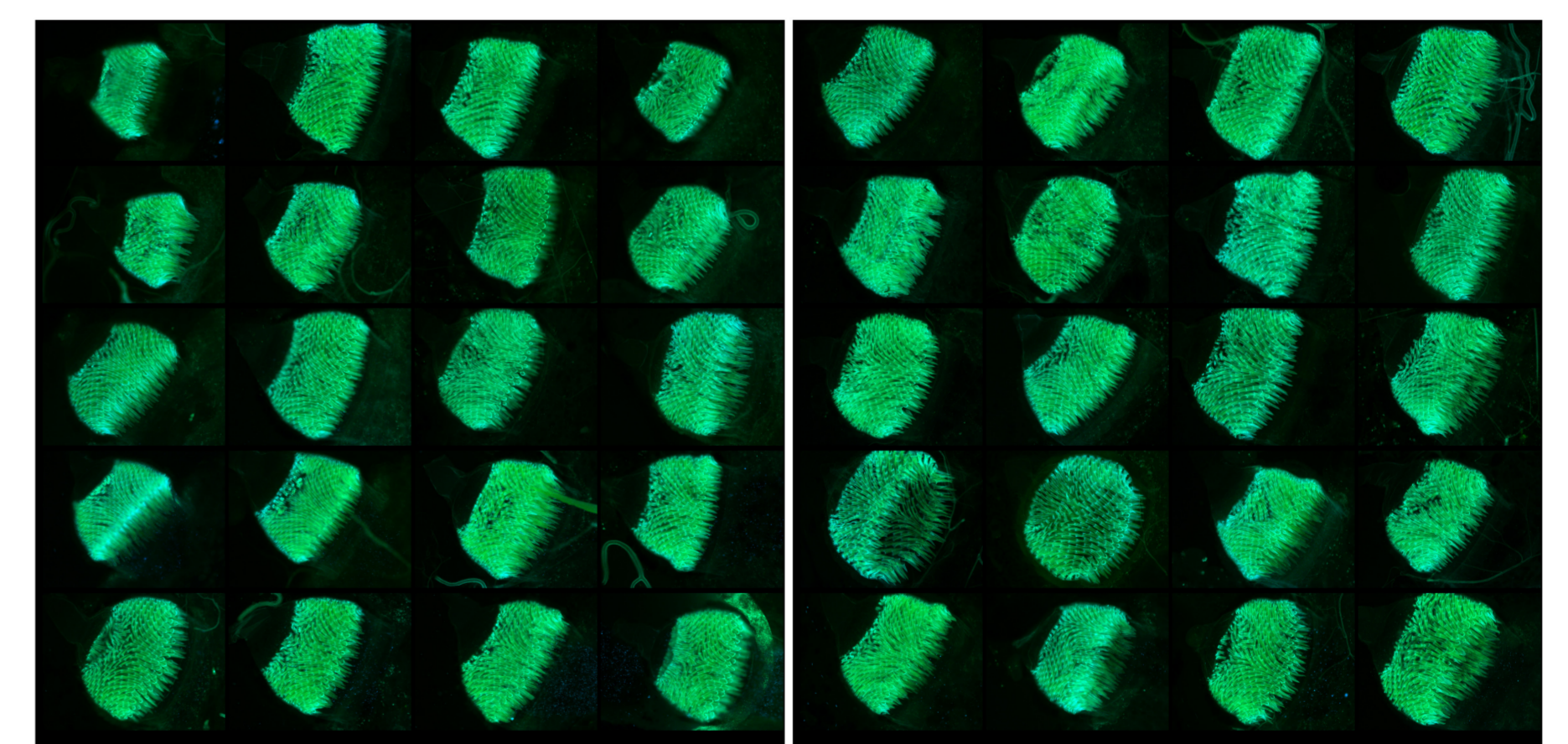
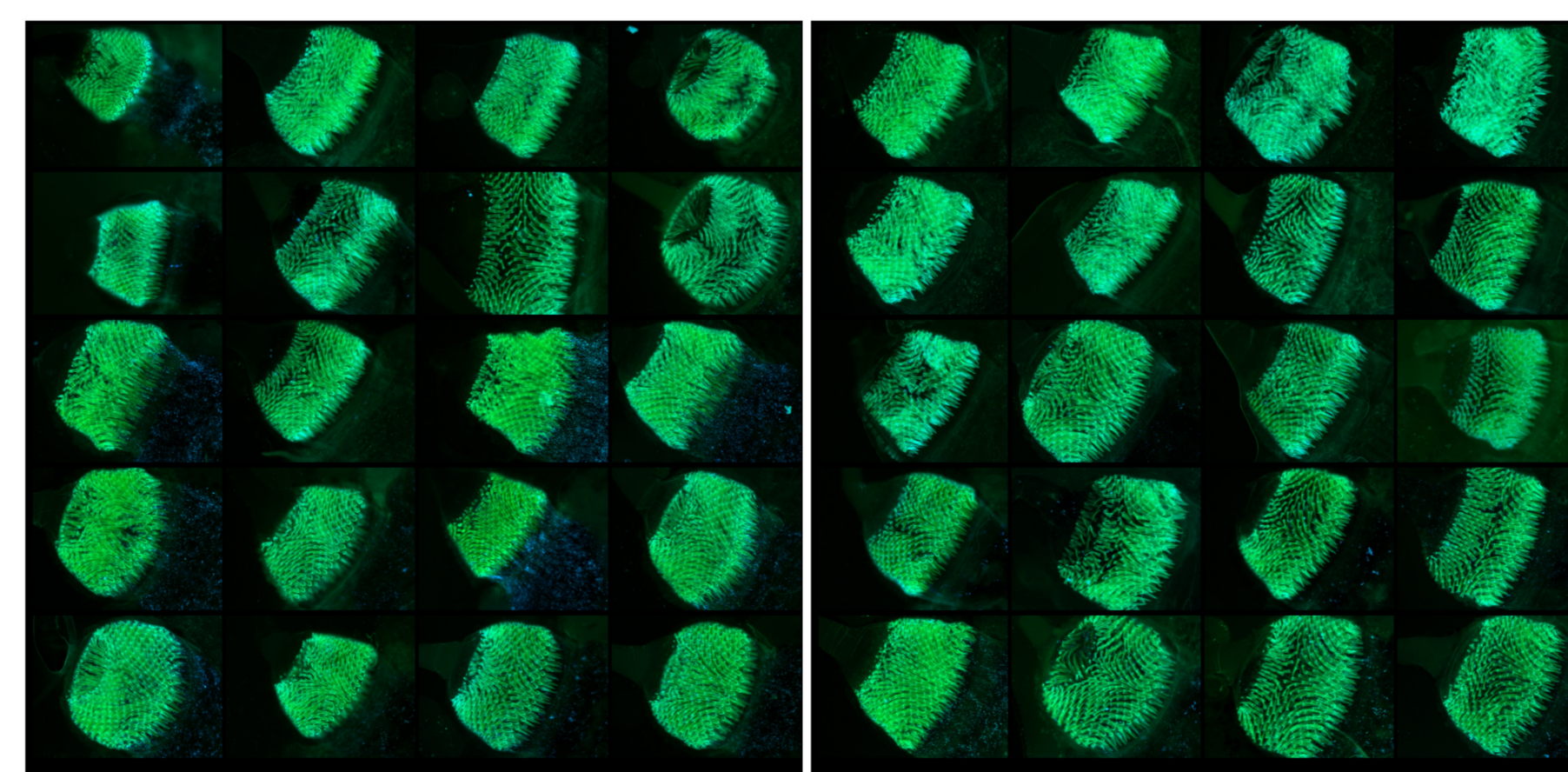
D6



D13

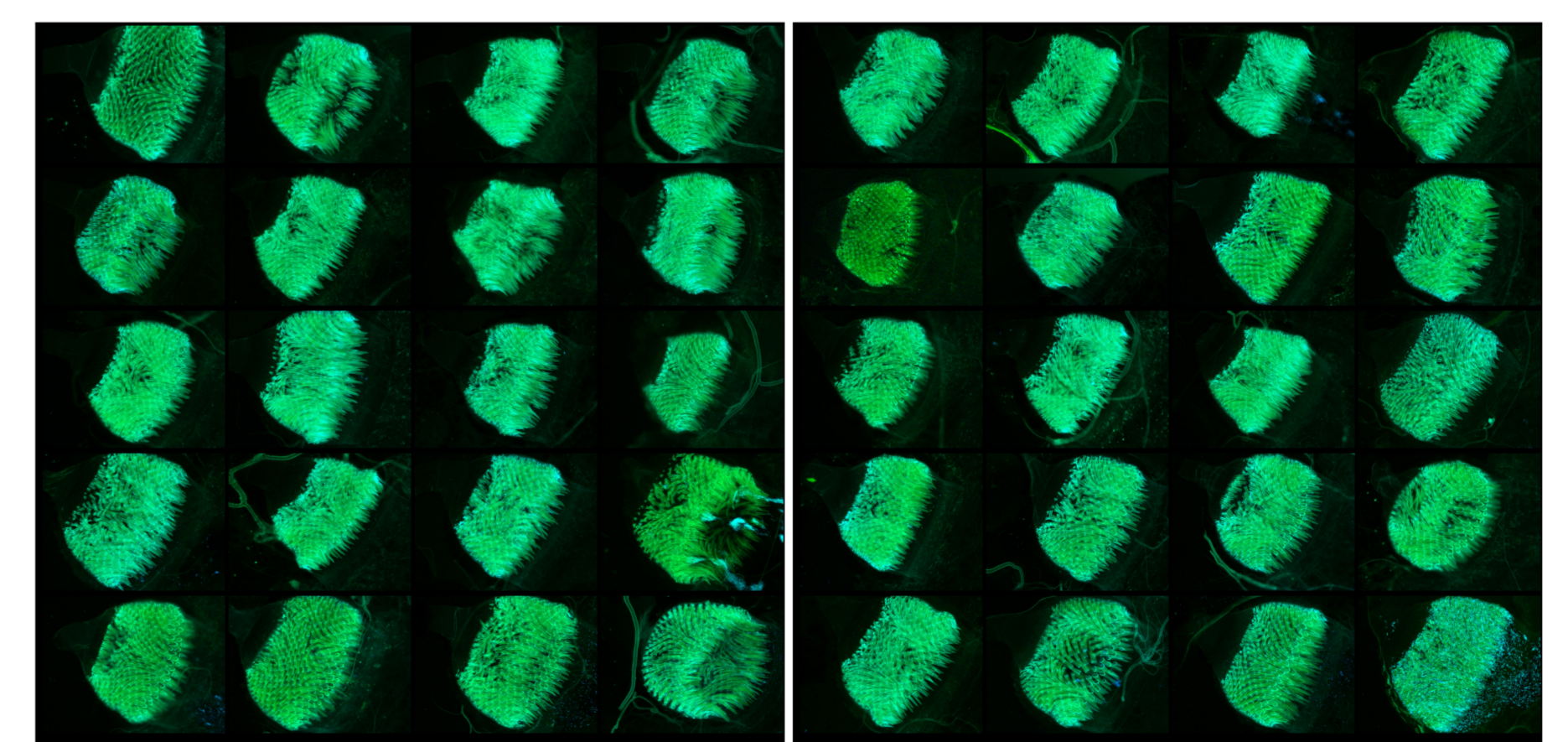
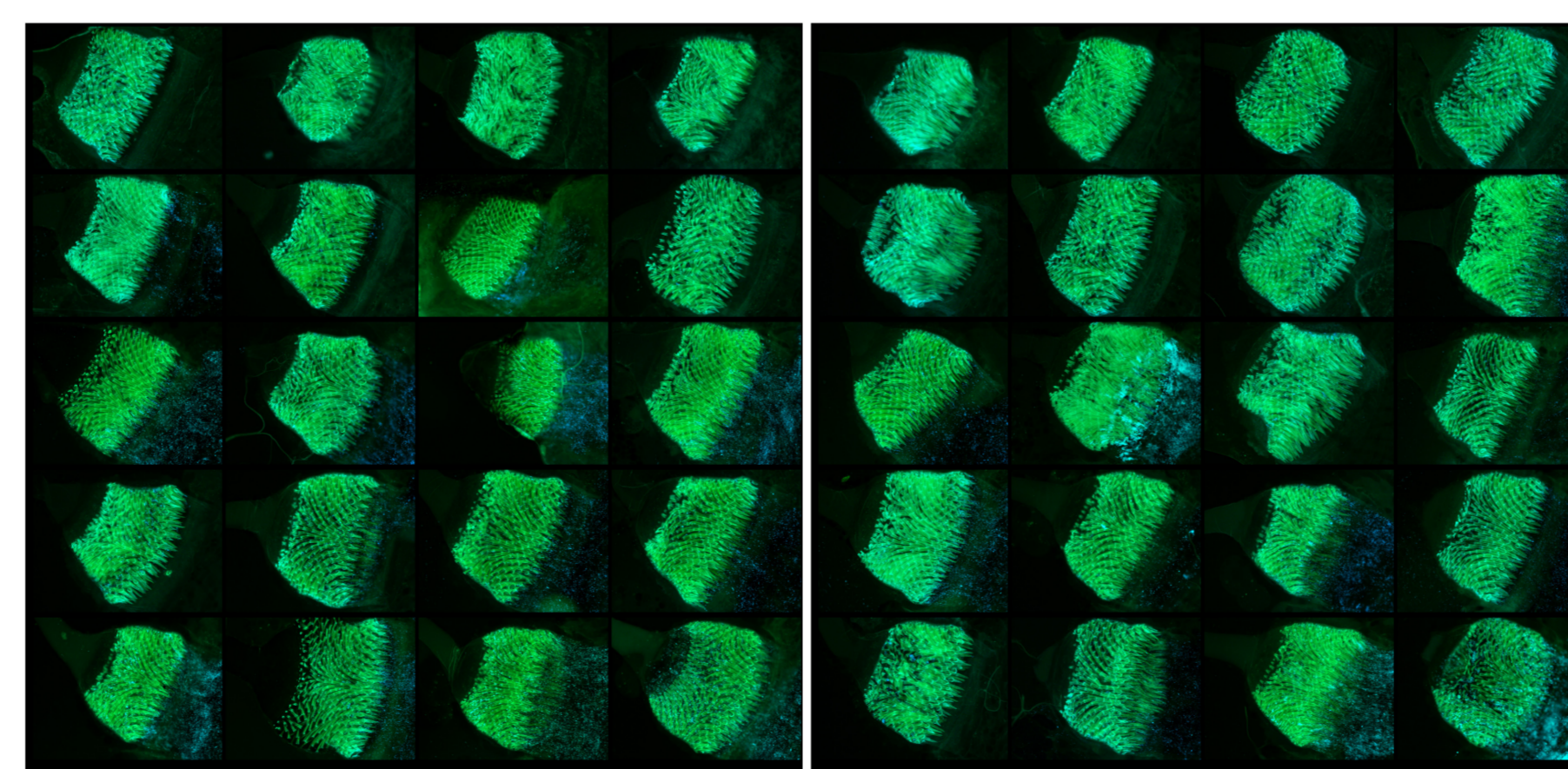


D2



ΔrpiA ΔrpiA2

D6



D13

