

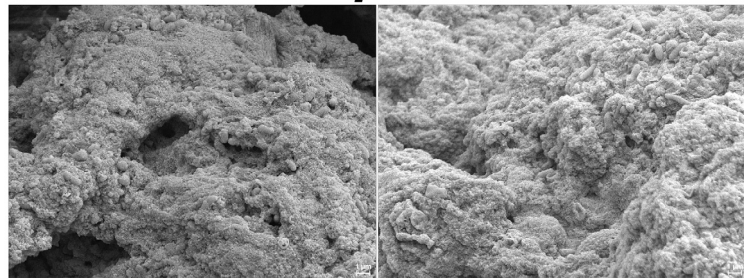
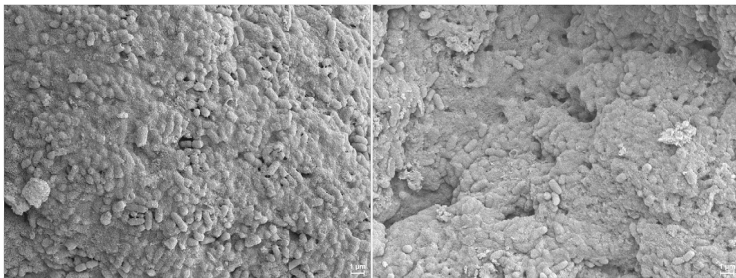
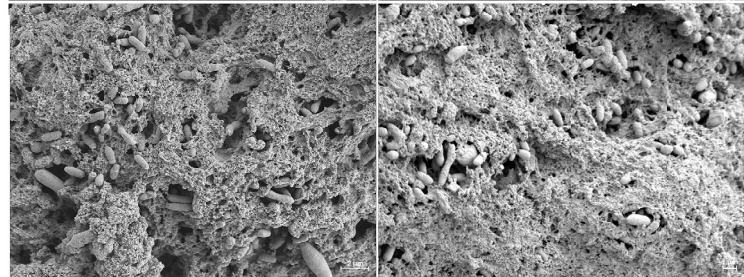
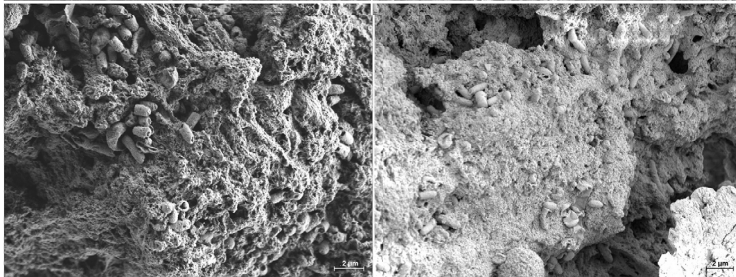
WT **$\Delta rpiA$** **D6****D13**

Figure S8. RpiA activity is needed for the production of a thick mass in the flea gut. A scanning electron micrograph of the biofilms produced by the WT and the $\Delta rpiA$ mutant in the flea at days 6 and 13 post-infection. Each photo was taken using the mass collected from a different flea (i.e. two individuals per day/strain).