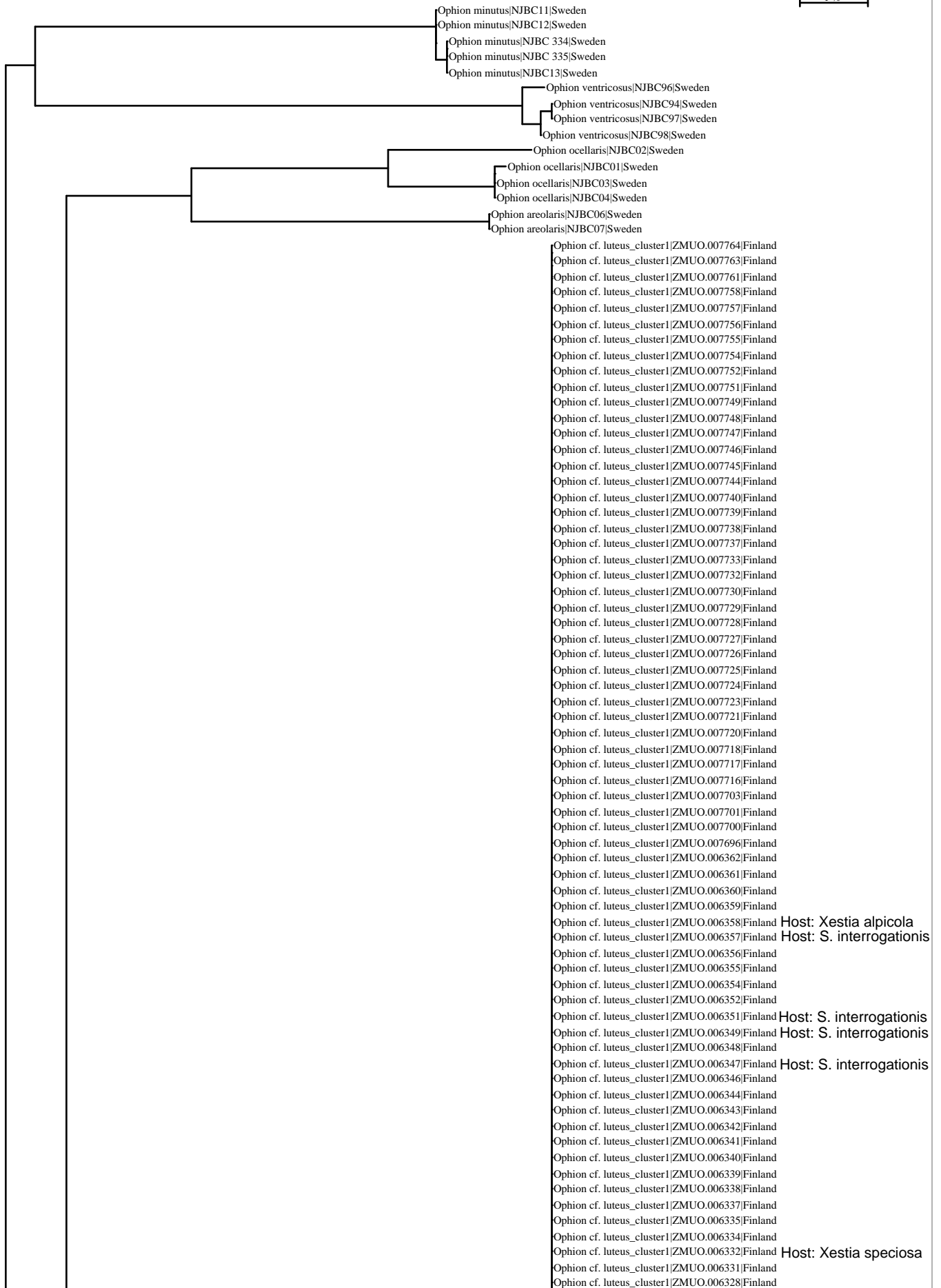


1 %



Ophion cf. luteus\_cluster1|ZMUO.006331|Finland  
 Ophion cf. luteus\_cluster1|ZMUO.006328|Finland  
 Ophion cf. luteus\_cluster1|ZMUO.006327|Finland  
 Ophion cf. luteus\_cluster1|ZMUO.006326|Finland  
 Ophion cf. luteus\_cluster1|ZMUO.006325|Finland  
 Ophion cf. luteus\_cluster1|ZMUO.006324|Finland  
 Ophion cf. luteus\_cluster1|ZMUO.006321|Finland  
 Ophion cf. luteus\_cluster1|ZMUO.006320|Finland  
 Ophion cf. luteus\_cluster1|ZMUO.006319|Finland  
 Ophion cf. luteus\_cluster1|ZMUO.006318|Finland  
 Ophion cf. luteus\_cluster1|ZMUO.006315|Finland  
 Ophion cf. luteus\_cluster1|ZMUO.006314|Finland  
 Ophion cf. luteus\_cluster1|ZMUO.006313|Finland  
 Ophion cf. luteus\_cluster1|ZMUO.006312|Finland  
 Ophion cf. luteus\_cluster1|ZMUO.006311|Finland Host: *Xestia speciosa*  
 Ophion cf. luteus\_cluster1|ZMUO.006310|Finland  
 Ophion cf. luteus\_cluster1|ZMUO.006309|Finland  
 Ophion cf. luteus\_cluster1|ZMUO.006308|Finland  
 Ophion cf. luteus\_cluster1|ZMUO.006306|Finland  
 Ophion cf. luteus\_cluster1|ZMUO.006304|Finland Host: *Xestia alpicola*  
 Ophion cf. luteus\_cluster1|ZMUO.006303|Finland  
 Ophion cf. luteus\_cluster1|ZMUO.006302|Finland  
 Ophion cf. luteus\_cluster1|ZMUO.006301|Finland  
 Ophion cf. luteus\_cluster1|ZMUO.006300|Finland  
 Ophion cf. luteus\_cluster1|ZMUO.006299|Finland  
 Ophion cf. luteus\_cluster1|ZMUO.006298|Finland  
 Ophion cf. luteus\_cluster1|ZMUO.006297|Finland  
 Ophion cf. luteus\_cluster1|ZMUO.006296|Finland  
 Ophion cf. luteus\_cluster1|ZMUO.006295|Finland  
 Ophion cf. luteus\_cluster1|ZMUO.006292|Finland  
 Ophion cf. luteus\_cluster1|ZMUO.006282|Finland Host: *Xestia speciosa*  
 Ophion cf. luteus\_cluster1|ZMUO.006277|Finland Host: *Xestia speciosa*  
 Ophion cf. luteus\_cluster1|ZMUO.006276|Finland  
 Ophion kevoensis|NJBC71|Sweden  
 Ophion kevoensis|NJBC 332|Sweden  
 Ophion kevoensis|NJBC 320|Sweden  
 Ophion cf. luteus\_cluster1|ZMUO.006336|Finland  
 Ophion cf. luteus\_cluster1|ZMUO.006291|Finland  
 Ophion cf. luteus\_cluster1|ZMUO.006290|Finland  
 Ophion cf. luteus\_cluster1|ZMUO.006288|Finland  
 Ophion cf. luteus\_cluster1|ZMUO.006286|Finland  
 Ophion cf. luteus\_cluster1|ZMUO.006279|Finland  
 Ophion cf. luteus\_cluster1|ZMUO.007731|Finland  
 Ophion cf. luteus\_cluster1|ZMUO.007743|Finland  
 Ophion cf. luteus\_cluster1|ZMUO.006287|Finland Host: *Xestia alpicola*  
 Ophion cf. luteus\_cluster1|ZMUO.006281|Finland Host: *Xestia speciosa*  
 Ophion cf. luteus\_cluster1|ZMUO.007735|Finland  
 Ophion cf. luteus\_cluster1|ZMUO.007736|Finland  
 Ophion cf. luteus\_cluster1|ZMUO.006333|Finland  
 Ophion cf. luteus\_cluster1|ZMUO.006329|Finland  
 Ophion cf. luteus\_cluster1|ZMUO.006330|Finland  
 Ophion cf. luteus\_cluster1|ZMUO.007753|Finland  
 Ophion cf. luteus\_cluster1|ZMUO.007760|Finland  
 Ophion cf. luteus\_cluster1|ZMUO.006283|Finland  
 Ophion cf. luteus\_cluster1|ZMUO.006278|Finland  
 Ophion kevoensis|NJBC72|Sweden  
 Ophion kevoensis|NJBC 333|Sweden  
 Ophion kevoensis|NJBC 321|Sweden  
 Ophion kevoensis|NJBC 319|Sweden  
 Ophion cf. luteus\_cluster1|ZMUO.006305|Finland  
 Ophion cf. luteus\_cluster1|ZMUO.006316|Finland  
 Ophion cf. luteus\_cluster1|ZMUO.006363|Finland  
 Ophion cf. luteus\_cluster1|ZMUO.006284|Finland Host: *Xestia alpicola*  
 Ophion cf. luteus\_cluster1|ZMUO.006317|Finland Host: *Xestia alpicola*  
 Ophion cf. luteus\_cluster1|ZMUO.006364|Finland  
 Ophion cf. luteus\_cluster1|ZMUO.007722|Finland  
 Ophion slaviceki|NJBC 264|Sweden  
 Ophion slaviceki|NJBC 325|Sweden  
 Ophion slaviceki|NJBC53|Sweden  
 Ophion slaviceki|NJBC55|Sweden  
 Ophion slaviceki|NJBC56|Sweden  
 Ophion slaviceki|NJBC57|Sweden  
 Ophion slaviceki|NJBC62|Sweden  
 Ophion slaviceki|NJBC 327|Sweden  
 Ophion luteus|NJBC66|Sweden  
 Ophion luteus|NJBC61|Sweden  
 Ophion luteus|NJBC 328|Sweden  
 Ophion luteus|NJBC 326|Sweden  
 Ophion luteus|NJBC60|Sweden  
 Ophion luteus|NJBC 324|Sweden  
 Ophion luteus|NJBC 322|Sweden  
 Ophion luteus|NJBC 302|Sweden  
 Ophion luteus|NJBC65|Sweden  
 Ophion luteus|NJBC67|Sweden

