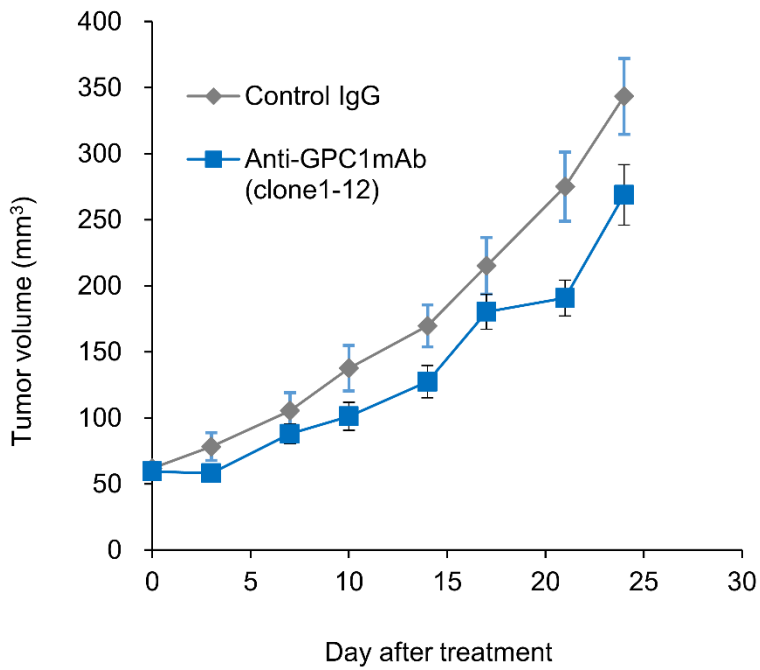


Supplementary figure 1



Supplementary Figure 1. Antitumour activity of anti-GPC1 mAb in BxPC-3 xenograft

Antitumour efficacy of anti-GPC1 mAb (clone 1-12) in BxPC-3 xenograft models (n = 10). Tumour-bearing mice were administered intraperitoneal control mAb (10 mg kg⁻¹) or anti-GPC1 mAb (10 mg kg⁻¹) as previously reported.²⁰ Each point on the graph represents the average tumour volume. Efficacy was not demonstrated

Supplementary Table 1.**Correlation between GPC1 expression and clinicopathological factors in our patient cohort.**

Variables	GPC1 expression		<i>p</i> -value
	Low (n=42)	High (n=33)	
Gender (n)			0.20
Male	29	18	
Female	13	15	
Age (yrs.)			
Median	67.2	67.1	0.12
Diabetes mellitus (n)			0.16
yes	9	18	
no	24	24	
Histology type (n)			0.43
wel/mod	39	32	
por/muc	3	1	
Tumor location (n)			0.26
Pancreas head	24	23	
Pancreas body or tail	18	10	
pT stage (n)			0.06
T1-2	16	6	
T3-4	26	27	
pN stage (n)			0.048
N0	32	18	
N1	10	15	

Supplementary Table 2. IC₅₀ of MMAF and anti-glypican-1 ADC in BxPC-3 and GPC1 knockdown cell**line**

Cell lines	Glypican-1 expression (ABC cell ⁻¹)	MMAF (nM)	MMAF in anti-glypican-1 ADC (nM)
BxPC-3	93 290	31.3	0.063
BxPC-3 NC-11	83 880	26.8	0.053
BxPC-3 KD-2-23	18 946	24.4	0.76

ABC: antibody binding capacity