

Supplementary Material

Table S1. MRD/ Flow status at MRD level and response according to IWMG in high-risk myeloma patients

	MRD/ Flow negative	MRD/ Flow positive
Complete remission	8 (50%)	8 (50%)
PR or VGPR	5 (38%)	8 (62%)

Journal Pre-proof

Figure S1. Overall survival of high-risk myeloma patients who were MRD negative by remission status (CR or NOT CR [PR/VGPR]). Median OS was not reached in either group.

OS of high-risk patients achieved MRD negative by CR status

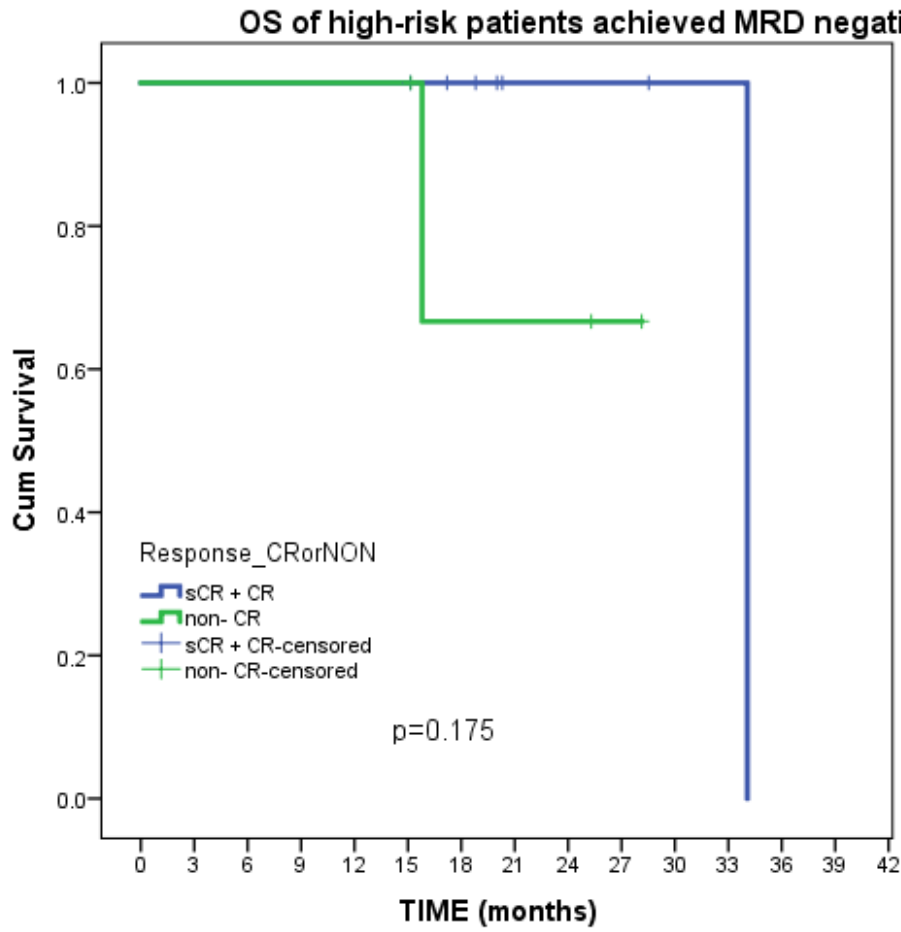


Figure S2. Progression free survival of high-risk myeloma patients who were MRD negative by remission status (CR and NOT CR [PR/VGPR]). Median PFS was not reached and 23 months in CR and not CR patients, respectively.

PFS of high-risk myeloma patients who achieved MRD/flow negativity by CR status

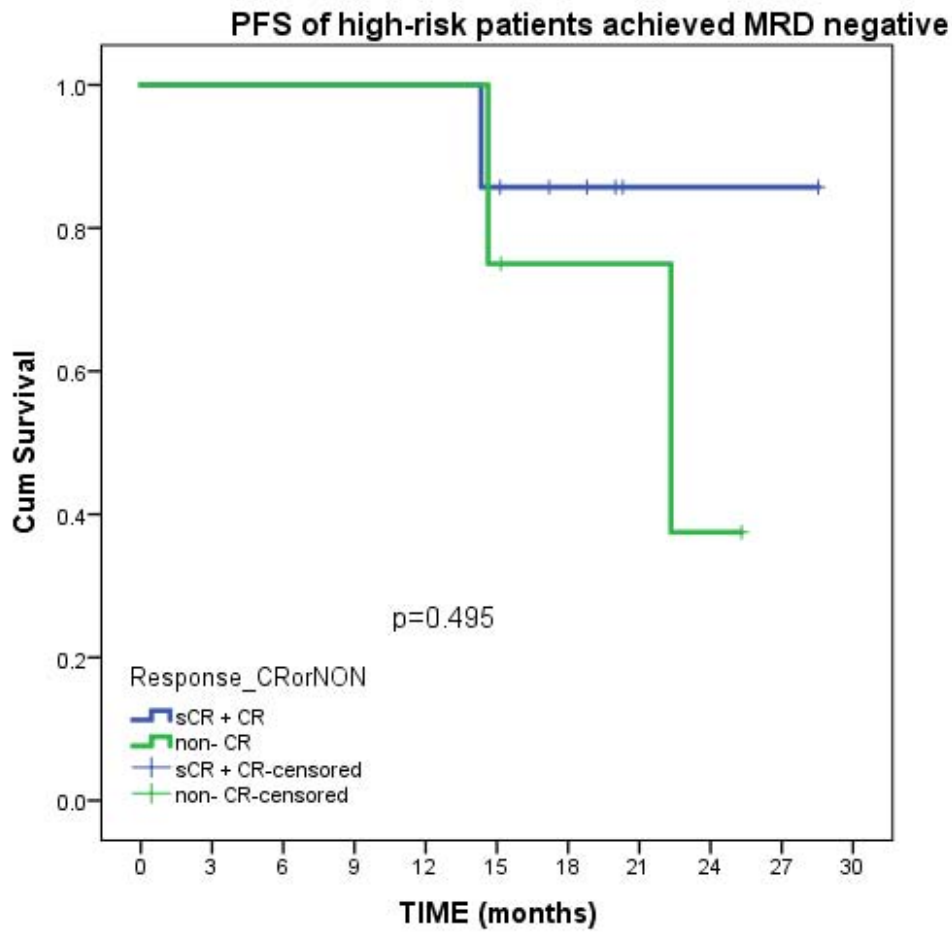


Figure S3. Progression free survival of high-risk myeloma patients who achieved CR by MRD status. Median PFS was not reached in either group

PFS of high-risk myeloma patients who achieved CR by MRD status

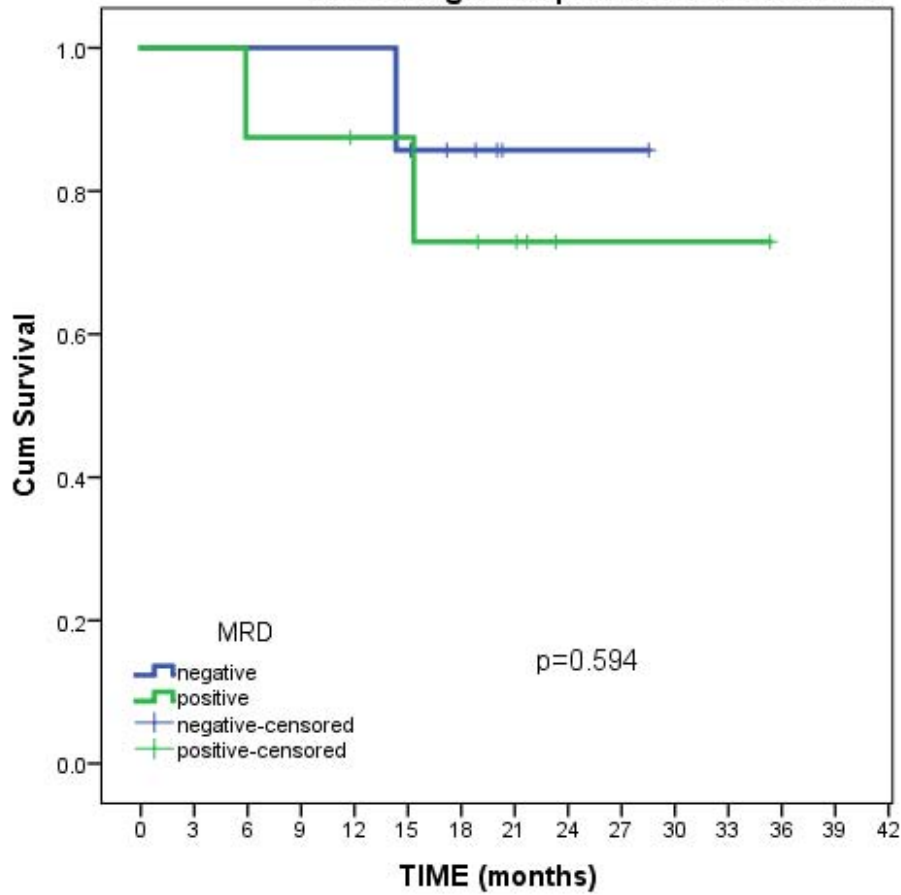


Figure S4. Overall survival of high-risk myeloma patients who achieved CR by MRD status. Median OS was not reached in either group.

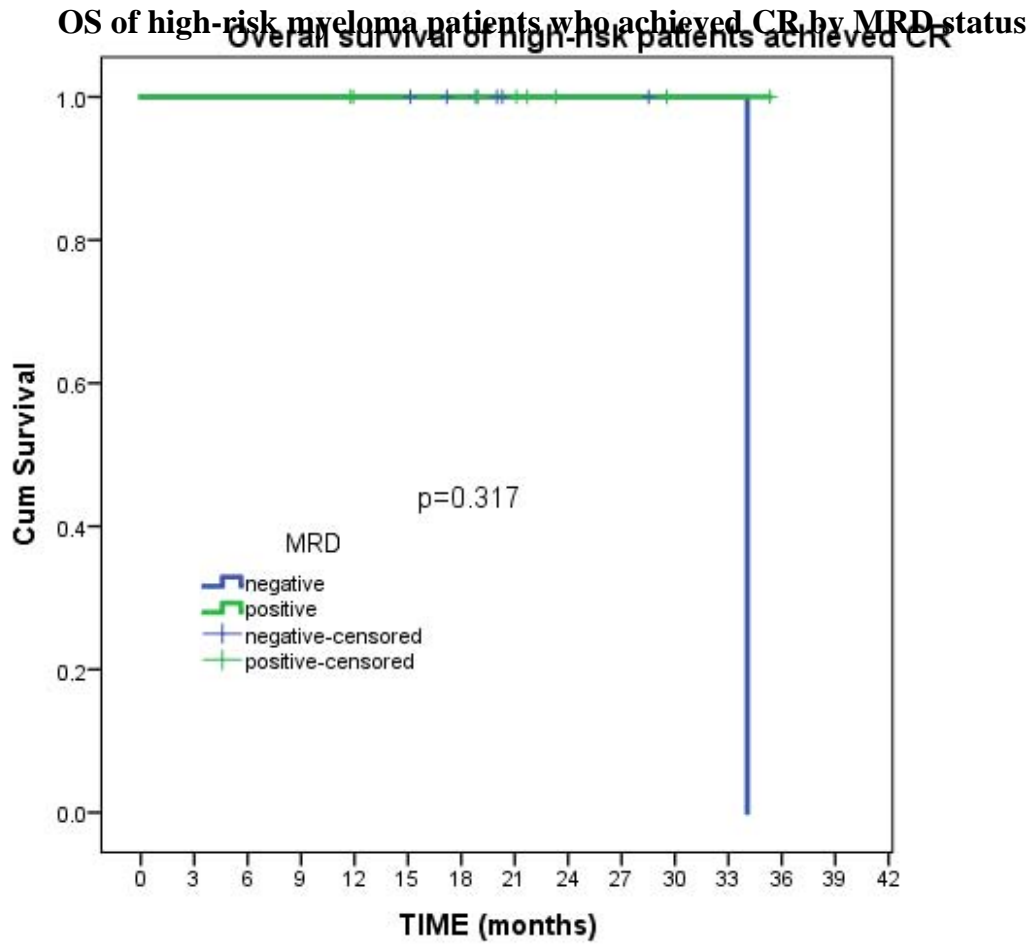


Figure S5. Progression free survival of high-risk myeloma patients who did not achieve a CR by flow status. Median PFS was 23 and 30 months in flow positive and negative patients, respectively.

PFS of high-risk myeloma patients who did not achieve CR by flow status

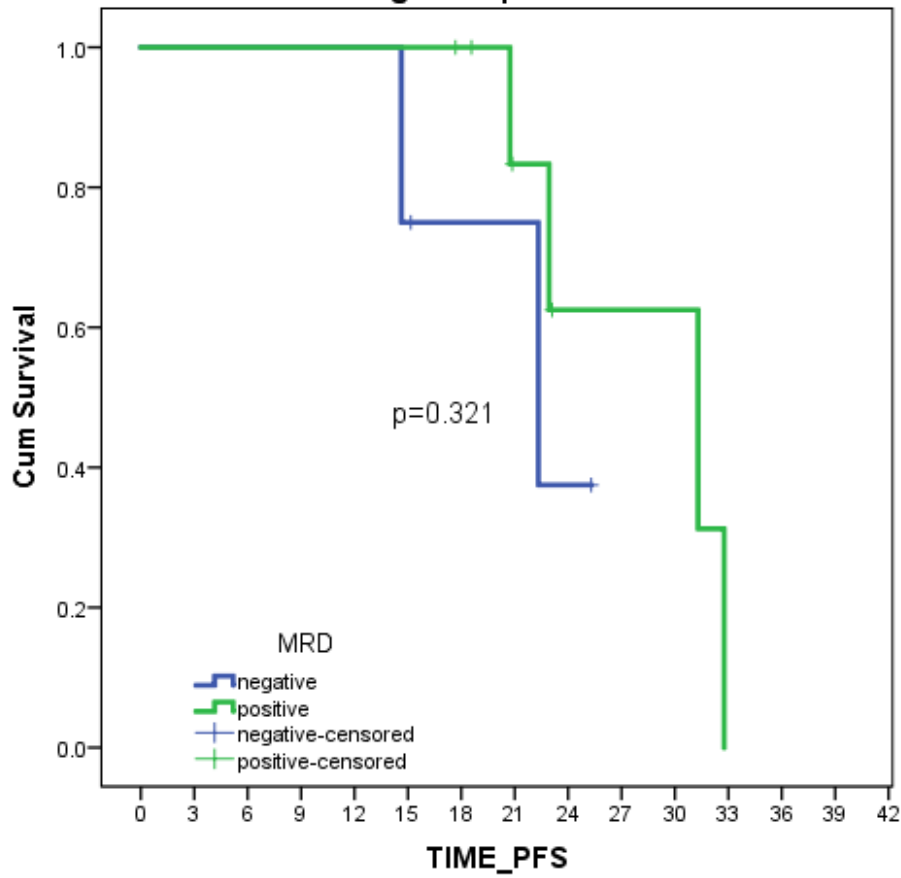


Figure S6. Overall survival of high-risk myeloma patients who did not achieve CR by flow status. Median OS was not reached in either group.

OS of high-risk myeloma patients who did not achieve CR by flow status

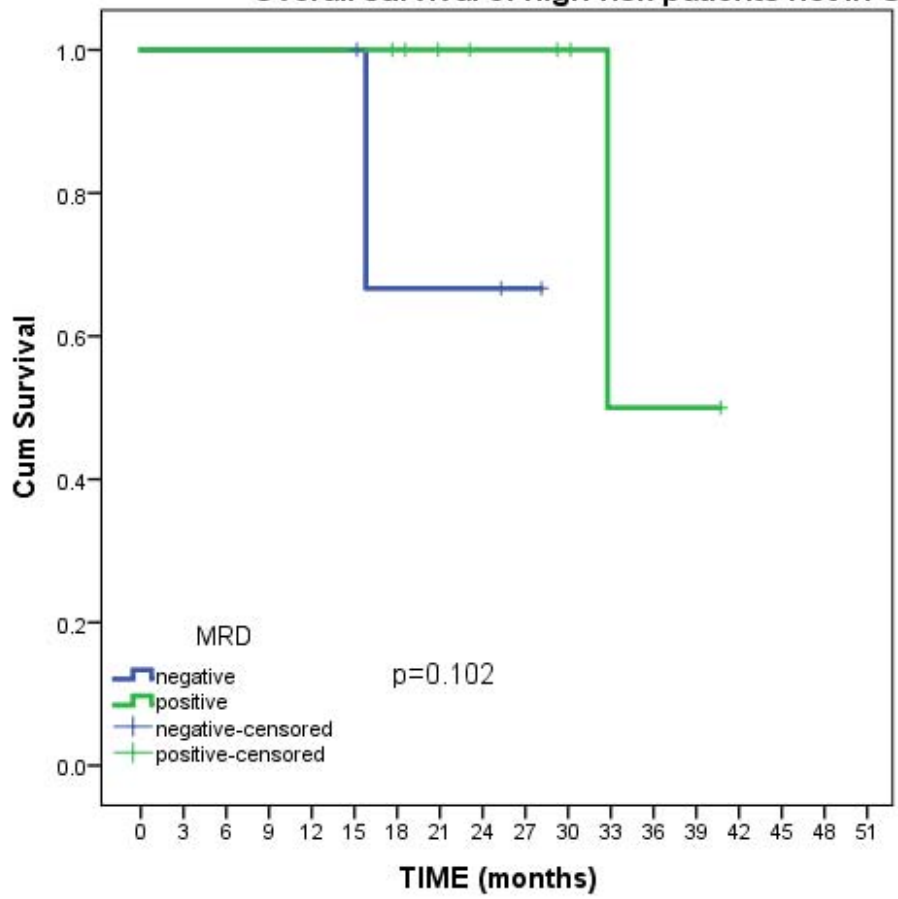


Figure S7. Progression free survival in high-risk myeloma patients by CR and MRD status.

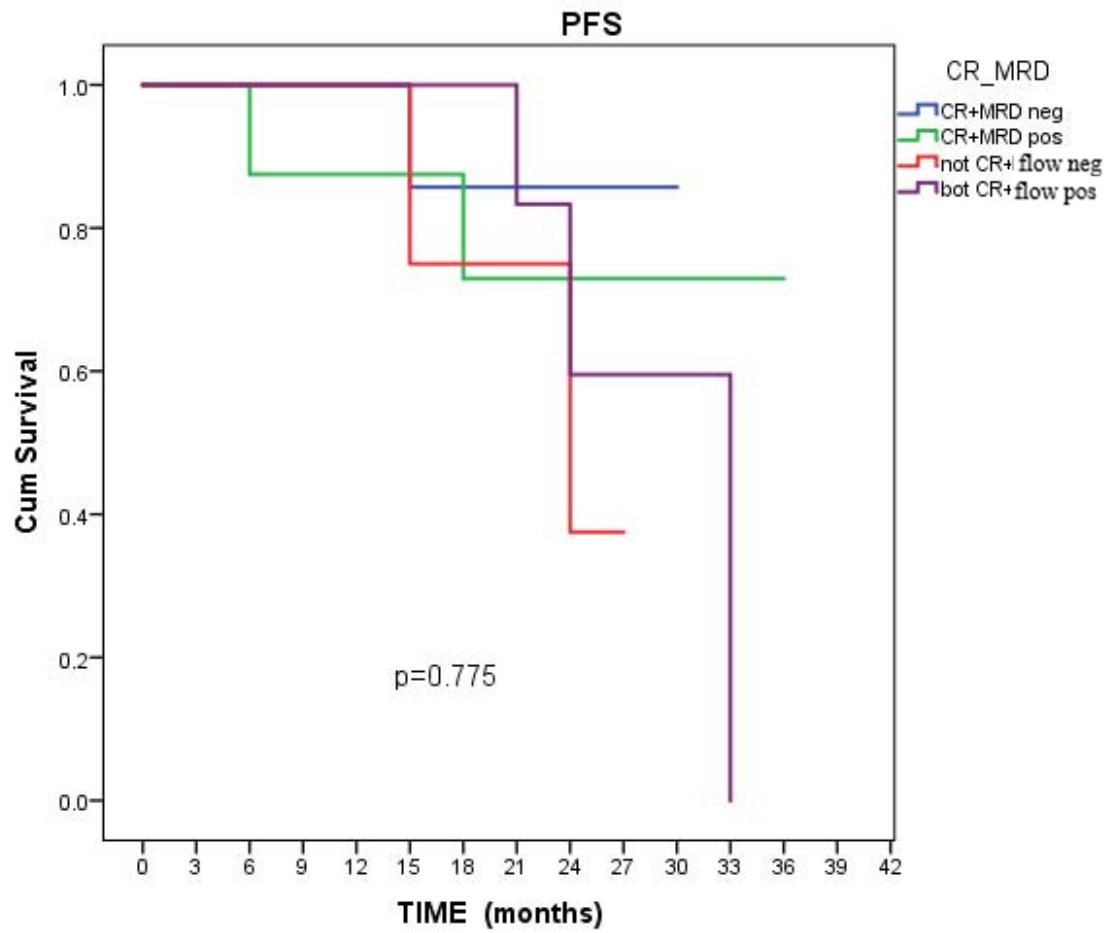


Figure S8. Overall survival in high-risk myeloma patients by CR and MRD status.

