

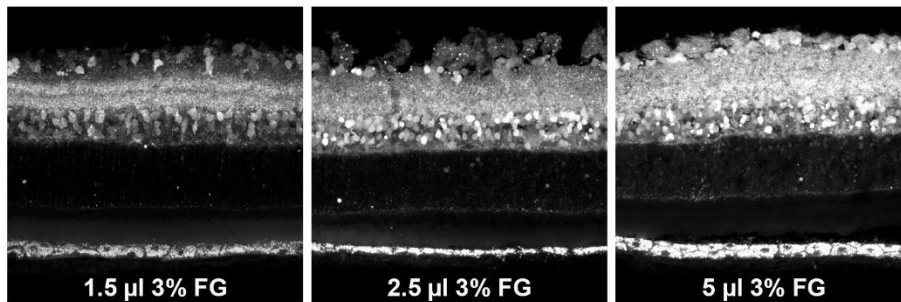
## **Tracing the retina to analyze the integrity and phagocytic capacity of the retinal pigment epithelium**

Francisco J. Valiente-Soriano<sup>\*1</sup>, Manuel Salinas-Navarro<sup>1</sup>, Johnny Di Pierdomenico<sup>1</sup>, Diego García-Ayuso<sup>1</sup>, Fernando Lucas-Ruiz<sup>1</sup>, Isabel Pinilla<sup>2</sup>, Nicolás Cuenca<sup>3</sup>, Manuel Vidal-Sanz<sup>1</sup>,  
María Paz Villegas-Pérez<sup>1</sup>, Marta Agudo-Barriuso<sup>\*1</sup>

<sup>1</sup>Departamento de Oftalmología, Facultad de Medicina, Universidad de Murcia and Instituto Murciano de Investigación Biosanitaria-Virgen de la Arrixaca (IMIB-Arrixaca) Murcia, Spain.

<sup>2</sup>Instituto de Investigación Sanitaria Aragón, Aragon Health Sciences Institute, Lozano Blesa University Hospital Zaragoza, Spain.

<sup>3</sup>Departamento de Fisiología, Genética y Microbiología, Universidad de Alicante Alicante, Spain.



**Supplementary Figure: Pilot experiment to adjust the amount of tracer administered intravitreally.**

Injections of 1.5, 2.5 or 5 µl FG 3% were tested in cross-sections 24 hours after administration. The RPE was labeled with all volumes but the best visualization was obtained with 1.5 µl.