

**OMTM, Volume 17**

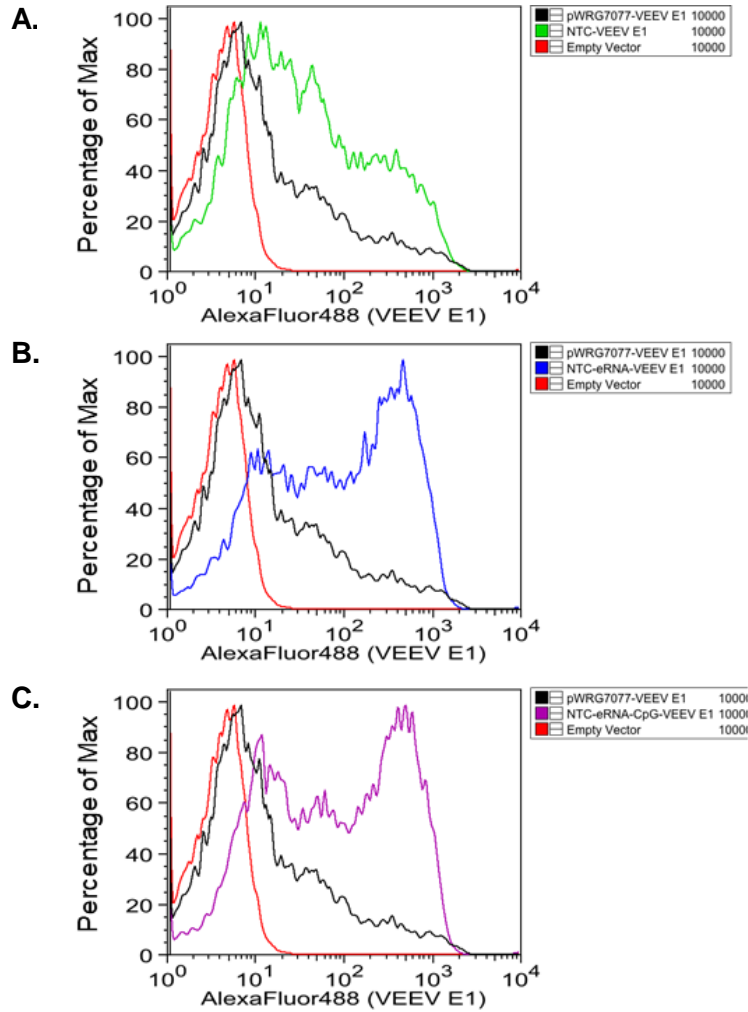
**Supplemental Information**

**Nanoplasmid Vectors Co-expressing Innate Immune**

**Agonists Enhance DNA Vaccines for Venezuelan**

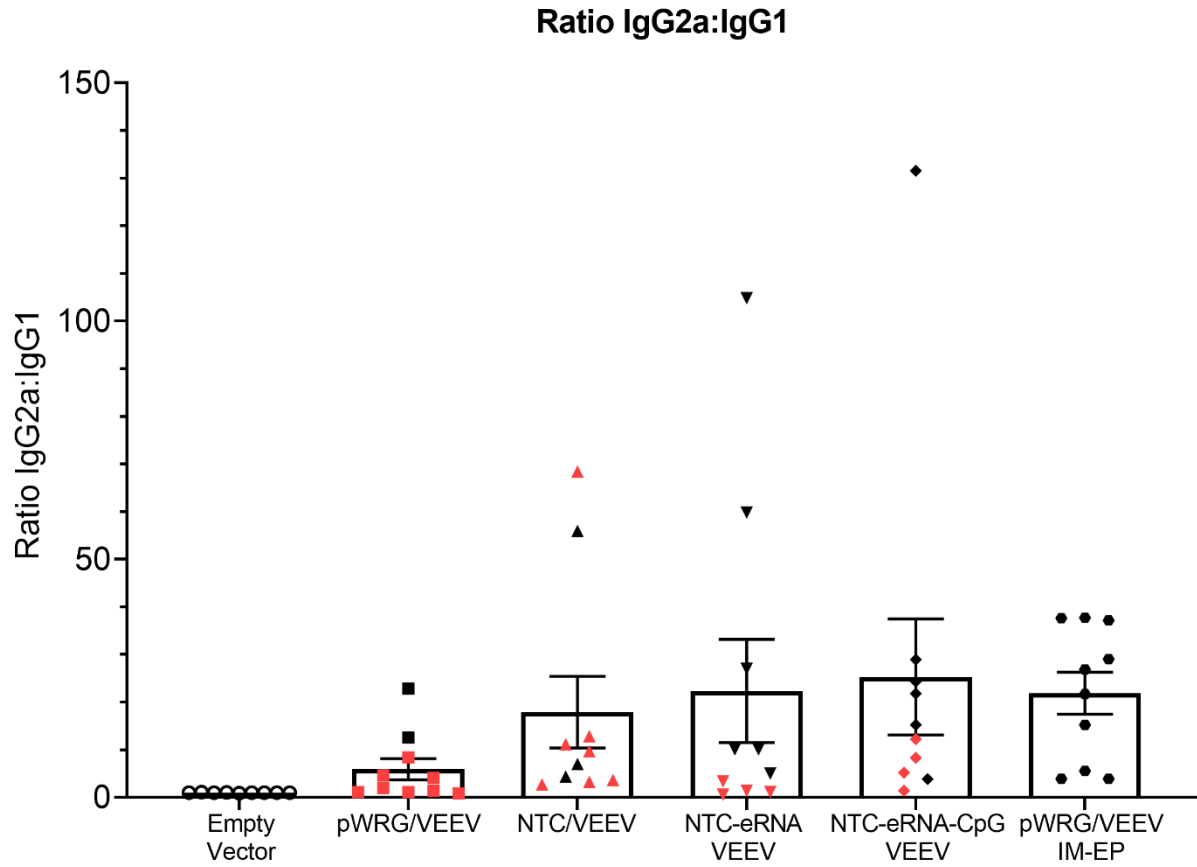
**Equine Encephalitis Virus and Ebola Virus**

**John J. Suschak, Lesley C. Dupuy, Charles J. Shoemaker, Carolyn Six, Steven A. Kwilas, Kristin W. Spik, James A. Williams, and Connie S. Schmaljohn**



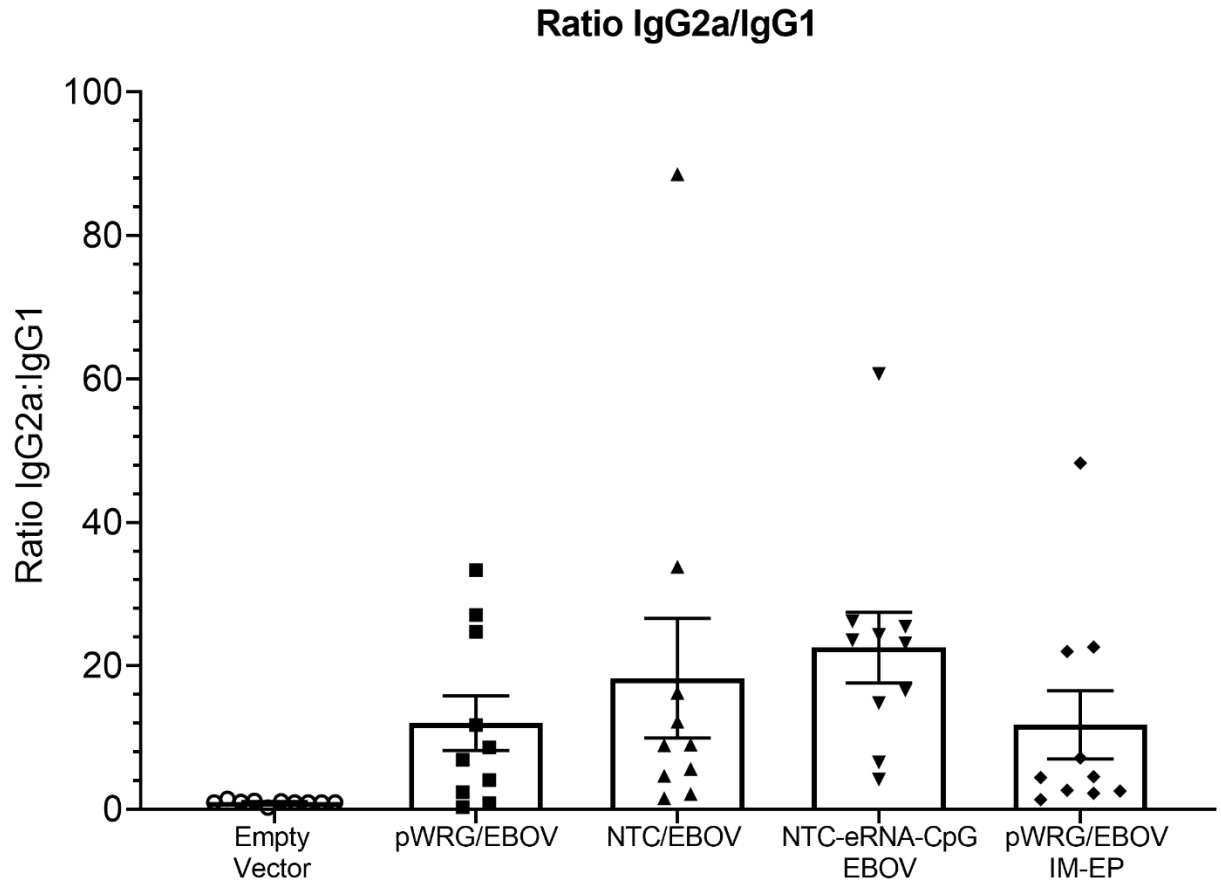
**Figure S1. Histogram Plots of GP Expression from COS-7 Cells Transfected with the Various VEEV GP Expressing DNA Vaccines**

Representative histogram plots were generated for COS-7 cells transfected with 50 ng empty vector, pWRG/VEEV, or the individual Nanoplasmid vaccines. For these representative plots, the percentage of GP expressing cells were determined by staining for VEEV E1 surface expression with monoclonal antibody 3B2A-9. These data are representative of that shown in Figures 1A, C, E.



**Figure S2. isRNA Expressing VEEV Nanoplasmids Favor an IgG2a Humoral Response**

Female BALB/c mice were vaccinated with 5  $\mu$ g of pWRG/VEEV or the various VEEV Nanoplasmids on days 0 and 21 by IM injection. VEEV GP-specific antibody responses were analyzed 21 days after the second vaccination by ELISA. The ratio of VEEV-specific IgG2a:IgG1 antibody titers are shown. Mice that were euthanized or succumbed to disease following  $10^4$  PFU VEEV aerosol challenge are shown in red. Data are the group mean averages  $\pm$  SEM.



**Figure S3. isRNA Expressing EBOV Nanoplasmids Favor an IgG2a Humoral Response**

Female BALB/c mice were vaccinated with 25  $\mu$ g of pWRG/EBOV or the various EBOV Nanoplasmids on days 0 and 21 by IM injection. EBOV GP-specific antibody responses were analyzed 21 days after the second vaccination by ELISA. The ratio of EBOV-specific IgG2a:IgG1 antibody titers are shown. Data are the group mean averages  $\pm$  SEM.