

ENO1 expression in ovarian cancer cells

Supplementary Table 1. List of the 147 proteins detected by proteomics in A2780 and A2780CP20 cells

UniProtKB	Protein Symbol	Protein Name	Gene Name	Location	Function
P62258	1433E	14-3-3 protein epsilon	YWHAE	Nucleus, Cytoplasm	Host-virus Interaction
P01889	1B07	HLA class I histocompatibility antigen, B-7 alpha chain	HLA-B	Membrane, MCH I	Host-virus Interaction, Immunity
P28223	5HT2A	5-hydroxytryptamine receptor 2A	HTR2A	Plasma Membrane	G-protein Coupled Receptor, Host Cell Receptor for Virus Entry, Receptor, Transducer
P52209	6PGD	6-phosphogluconate dehydrogenase, decarboxylating	PGD	Cytoplasm	Oxidoreductase
P29274	AA2AR	Adenosine receptor A2a	ADORA2A	Cell Membrane, Membrane	G-Protein Coupled Receptor, Receptor, Transducer
Q9UBJ2	ABCD2	ATP-binding cassette sub-family D member 2	ABCD2	Membrane, Peroxisome	ATPase activity, Transport
P49753	ACOT2	Acyl-coenzyme A thioesterase 2, mitochondrial	ACOT2	Mitochondrion	Hydrolase, Serine Esterase
P60709	ACTB	Actin, cytoplasmic 1	ACTB	Cytoplasm, Cytoskeleton, Nucleus	Motility
P68133	ACTS	Actin, alpha skeletal muscle	ACTA1	Cytoplasm, Cytoskeleton	Muscle Protein
Q9P0K1	ADA22	Disintegrin and metalloproteinase domain-containing protein 22	ADAM22	Cell Membrane, Cell Projection, Membrane	Receptor
Q16186	ADRM1	Proteasomal ubiquitin receptor ADRM1	ADRM1	Cytoplasm, Nucleus, Proteasome	Protein regulation
Q02952	AKA12	A-kinase anchor protein 12	AKAP12	Cytoplasm, Cytoskeleton, Membrane	Anchoring Protein
P31749	AKT1	RAC-alpha serine/threonine-protein kinase	AKT1	Cell Membrane, Cytoplasm, Membrane, Nucleus	Developmental Protein, Kinase, Serine/Threonine-protein Kinase, Transferase
P49419	AL7A1	Alpha-aminoadipic semialdehyde dehydrogenase	ALDH7A1	Cytoplasm, Mitochondrion, Nucleus	Oxidoreductase
P04075	ALDOA	Fructose-bisphosphate aldolase A	ALDOA	Cytoplasm	Lyase
Q9GZV1	ANKR2	Ankyrin repeat domain-containing protein 2	ANKRD2	Cytoplasm, Nucleus	Transcription Regulator
P08243	ASNS	Asparagine synthetase [glutamine-hydrolyzing]	ASNS	Cytosol	Ligase
P25705	ATPA	ATP synthase subunit alpha, mitochondrial	ATP5F1A	Cell Membrane, CF(1), Membrane, Mitochondrion, Mitochondrion Inner Membrane	ATP Synthesis, Hydrogen Ion Transport, Ion transport, Transporter
UniProtKB	Protein Symbol	Protein Name	Gene Name	Location	Function
O00154	BACH	Cytosolic acyl coenzyme A thioester hydrolase	ACOT7	Mitochondrion, Cytoplasm	Hydrolase, Serine Esterase
O75531	BAF	Barrier-to-autointegration factor	BANF1	Chromosome, Cytoplasm, Nucleus	DNA-binding
Q13112	CAF1B	Chromatin assembly factor 1 subunit B	CHAF1B	Nucleus, Cytoplasm	Cell Cycle, DNA Damage, DNA Repair, DNA Replication, Transcription, Transcription Regulation
Q01518	CAP1	Adenylyl cyclase-associated protein 1	CAP1	Cell Membrane, Membrane	Actin-Binding
P49662	CASP4	Caspase-4	CASP4	Cytoplasm, Endoplasmic Reticulum, Inflammasome, Membrane, Mitochondrion, Extracellular Region	Hydrolase, Protease, Thiol Protease
P09668	CATH	Pro-cathepsin H	CTSH	Lysosome	Hydrolase, Protease, Thiol Protease
P52907	CAZA1	F-actin-capping protein subunit alpha-1	CAPZA1	Cytoplasm, Cytoskeleton	Actin Capping, Actin-binding
P04234	CD3D	T-cell surface glycoprotein CD3 delta chain	CD3D	Cell Membrane, Membrane	Receptor
P53567	CEBPG	CCAAT/enhancer-binding protein gamma	CEBPG	Nucleus	Activator, DNA-binding
P68400	CSK21	Casein kinase II subunit alpha	CSNK2A1	Nucleus	Kinase, Serine/Threonine-protein Kinase, Transferase
P04080	CYTB	Cystatin-B	CSTB	Nucleus, Cytoplasm	Protease Inhibitor, Thiol Protease Inhibitor
Q13561	DCTN2	Dynactin subunit 2	DCTN2	Cytoplasm, Cytoskeleton, Dynein, Membrane, Microtubule	Protein binding

ENO1 expression in ovarian cancer cells

P35659	DEK	Protein DEK	DEK	Nucleus	Chromatin Regulator, DNA-binding
P00367	DHE3	Glutamate dehydrogenase 1, mitochondrial	GLUD1	Mitochondrion	Oxidoreductase
P78352	DLG4	Disks large homolog 4	DLG4	Cell junction, Cell membrane, Cell projection, Cytoplasm, Membrane, Postsynaptic Cell Membrane, Synapse	Receptor Signaling
P30046	DOPD	D-dopachrome decarboxylase	DDT	Cytoplasm	Lyase
UniProtKB	Protein Symbol	Protein Name	Gene Name	Location	Function
P50570	DYN2	Dynamamin-2	DNM2	Cell Junction, Cell Membrane, Cell Projection, Coated Pit, Cytoplasm, Cytoplasmic vesicle, Cytoskeleton, Membrane, Microtubule, Postsynaptic Cell Membrane, Synapse	Hydrolase, Motor Protein
P49411	EFTU	Elongation factor Tu, mitochondrial	TUFM	Mitochondrion	Elongation factor
P00533	EGFR	Epidermal growth factor receptor	EGFR	Golgi Apparatus, Plasma Membrane, Nucleus, Endosome, Endoplasmic Reticulum, Extracellular Region	Developmental Protein, Host Cell Receptor for Virus Entry, Kinase, Receptor, Transferase, Tyrosine-protein Kinase
Q8N8S7	ENAH	Protein enabled homolog	ENAH	Cell Junction, Cell Projection, Cytoplasm, Cytoskeleton, Synapse	Actin-binding
P06733	ENOA	Alpha-enolase	ENO1	Cell membrane, Cytoplasm, Membrane, Nucleus	DNA-binding, Lyase, Repressor
Q9H6S3	ESSL2	Epidermal growth factor receptor kinase substrate 8-like protein 2	EPSL2	Cell Projection, Cytoplasm	Actin-binding
Q14296	FASTK	Fas-activated serine/threonine kinase	FASTK	Mitochondrion	Kinase, RNA-binding, Serine/Threonine-protein Kinase, Transferase
P07332	FES	Tyrosine-protein kinase Fes/Fps	FES	Cell Junction, Cell Membrane, Cytoplasm, Cytoplasmic Vesicle, Cytoskeleton, Golgi Apparatus, Membrane	Kinase, Transferase, Tyrosine-protein Kinase
Q02790	FKBP4	Peptidyl-prolyl cis-trans isomerase FKBP4	FKBP4	Cell Projection, Cytoplasm, Cytoskeleton, Microtubule, Mitochondrion, Nucleus	Chaperone, Isomerase, Rotamase
Q04446	GLGB	1,4-alpha-glucan-branching enzyme	GBE1	Cytosol, Extracellular Region	Glycosyltransferase, Transferase
P63096	GNAI1	Guanine nucleotide-binding protein G(i) subunit alpha-1	GNAI1	Cell Membrane, Cytoplasm, Cytoskeleton, Membrane, Nucleus	Transducer
P36969	GPX4	Phospholipid hydroperoxide glutathione peroxidase	GPX4	Cytoplasm, Mitochondrion	Developmental Protein, Oxidoreductase, Peroxidase
Q16836	HCDH	Hydroxyacyl-Coenzyme A dehydrogenase, Mitochondrial	HADH	Mitochondrion	Oxidoreductase
UniProtKB	Protein Symbol	Protein Name	Gene Name	Location	Function
P51858	HDGF	Hepatoma-derived growth factor	HDGF	Cytoplasm, Nucleus	DNA-binding, Repressor, Growth factor, Heparin-binding
P02790	HEMO	Hemopexin	HPX	Extracellular Region	Host-virus Interaction, Transport
P04233	HG2A	HLA class II histocompatibility antigen gamma chain	CD74	Endosome, Lysosome, Golgi Apparatus, Endoplasmic Reticulum, Plasma Membrane	Chaperone
Q16665	HIF1A	Hypoxia-inducible factor 1-alpha	HIF1A	Cytoplasm, Nucleus	Activator, DNA-binding
O75330	HMMR	Hyaluronan mediated motility receptor	HMMR	Cytoplasm	Hyaluronic Acid
P07910	HNRPC	Heterogeneous nuclear ribonucleoprotein C1/C2	HNRNPC	Nucleus, Spliceosome	Ribonucleoprotein, RNA-binding
Q00613	HSF1	Heat shock factor protein 1	HSF1	Nucleus, Cytoskeleton	Activator, DNA binding
Q03933	HSF2	Heat shock factor protein 2	HSF2	Nucleus, Cytoplasm	Activator, DNA-binding
P34932	HSP74	Heat shock 70 kDa protein 4	HSPA4	Cytoplasm	Stress Response

ENO1 expression in ovarian cancer cells

Q92839	HYAS1	Hyaluronan synthase 1	HAS1	Membrane	Glycosyltransferase, Transferase
Q92819	HYAS2	Hyaluronan synthase 2	HAS2	Membrane	Glycosyltransferase, Transferase
P05198	IF2A	Eukaryotic translation initiation factor 2 subunit 1	EIF2S1	Cytoplasm	Initiation Factor, RNA-binding
P35225	IL13	Interleukin 13	IL13	Extracellular Region	Cytokine
P05112	IL4	Interleukin-4	IL4	Extracellular Region	Cytokine, Growth Factor
Q13418	ILK	Integrin-linked protein kinase	ILK	Cell Junction, Cell Membrane, Cell Projection, Cytoplasm, Membrane	Kinase, Serine/Threonine-protein Kinase, Transferase
Q9H0C8	ILKAP	Integrin-linked kinase-associated serine/threonine phosphatase 2C	ILKAP	Cytoplasm	Hydrolase, Protein Phosphatase
P12268	IMDH2	Inosine-5'-monophosphate dehydrogenase 2	IMPDH2	Nucleus, Cytoplasm	DNA-binding, Oxidoreductase, RNA-binding
P41236	IPP2	Protein phosphatase inhibitor 2	PPP1R2	Nucleus, Cytosol	Protein Phosphatase Inhibitor
Q9Y624	JAM1	Junctional adhesion molecule A	F11R	Plasma Membrane	Host Cell Receptor for Virus Entry, Receptor
P56470	LEG4	Galectin-4	LGALS4	Extracellular Region, Cytosol, Plasma Membrane	Lectin
P02545	LMNA	Prelamin-A/C	LMNA	Intermediate Filament, Nucleus	Nucleus dynamics
Q02779	M3K10	Mitogen-activated protein kinase kinase kinase 10	MAP3K10	Cytoplasm	Kinase, Serine/Threonine-protein Kinase, Transferase
UniProtKB	Protein Symbol	Protein Name	Gene Name	Location	Function
Q99558	M3K14	Mitogen-activated protein kinase kinase kinase 14	MAP3K14	Cytoplasm	Kinase, Serine/Threonine-protein kinase, Transferase
Q9Y2U5	M3K2	Mitogen-activated protein kinase kinase kinase 2	MAP3K2	Nucleus, Cytoplasm	Kinase, Serine/Threonine-protein Kinase, Transferase
P40925	MDHC	Malate dehydrogenase, cytoplasmic	MDH1	Cytoplasm	Oxidoreductase
P28482	MK01	Mitogen-activated protein kinase 1	MAPK1	Nucleus, Cytoskeleton, Cytoplasm, Membrane	DNA-binding, Kinase, Repressor, Serine/Threonine-protein Kinase, Transferase
P27361	MK03	Mitogen-activated protein kinase 3	MAPK3	Cytoplasm, Membrane, Nucleus	Kinase, Serine/Threonine-protein kinase, Transferase
P01106	MYC	Myc proto-oncogene protein	MYC	Nucleus	Activator, DNA-binding
P04198	MYCN	N-myc proto-oncogene protein	MYCN	Nucleus	Activator, DNA-binding
Q15746	MYLK	Myosin light chain kinase, smooth muscle	MYLK	Cytoskeleton, Cell Projection, Cytoplasm	Actin-binding, Calmodulin-binding, Kinase, Serine/Threonine-protein Kinase, Transferase
P19878	NCF2	Neutrophil cytosol factor 2	NCF2	Cytoplasm	Electron transfer
Q15080	NCF4	Neutrophil cytosol factor 4	NCF4	Endosome, Cytoplasm, Membrane	Lipid-binding
O43639	NCK2	Cytoplasmic protein NCK2	NCK2	Endoplasmic Reticulum, Cytoplasm	Translation Regulation
P22392	NDKB	Nucleoside diphosphate kinase B	NME2	Cell Projection, Cytoplasm, Nucleus	Activator, DNA-binding, Kinase, Transferase
Q15843	NEDD8	NEDD8	NEDD8	Nucleus	Ubl Conjugation Pathway
Q16236	NF2L2	Nuclear factor erythroid 2-related factor 2	NFE2L2	Nucleus, Cytoplasm	Activator, DNA-binding
P19838	NFKB1	Nuclear factor NF-kappa-B p105 subunit	NFKB1	Nucleus, Cytoplasm	Activator, DNA-binding
Q9Y5S8	NOX1	NADPH oxidase 1	NOX1	Cell Junction, Cell Membrane, Cell Projection, Membrane	Ion channel, Oxidoreductase, Voltage-gated Channel
O14786	NRP1	Neuropilin-1	NRP1	Cell Membrane, Extracellular Region, Membrane	Developmental Protein, Heparin-binding, Receptor
P49757	NUMB	Protein numb homolog	NUMB	Membrane	Developmental Protein
Q9POS3/ Q53FV1	ORML1/ ORML2	ORM1-like protein 1/ORM1-like protein 2	ORMDL1/ ORMDL2	Endoplasmic Reticulum, Membrane	Metabolism

ENO1 expression in ovarian cancer cells

P04637	P53	Cellular tumor antigen p53	TP53	Nucleus, Cytoplasm, Endoplasmic Reticulum, Mitochondrion	Activator, DNA-binding, Repressor
UniProtKB	Protein Symbol	Protein Name	Gene Name	Location	Function
Q8WX93	PALLD	Palladin	PALLD	Cytoskeleton, Cell Projection, Cell Junction, Cytoplasm	Actin-binding
Q96R10	PAR4	Proteinase-activated receptor 4	F2RL3	Cell Membrane	G-protein Coupled Receptor, Receptor, Transducer
P23760	PAX3	Paired box protein Pax-3	PAX3	Nucleus	Developmental Protein, DNA-binding
Q01064	PDE1B	Calcium/calmodulin-dependent 3',5'-cyclic nucleotide phosphodiesterase 1B	PDE1B	Cytoplasm	Calmodulin-binding, Hydrolase
Q8IZL8	PELP1	Proline-, glutamic acid- and leucine-rich protein 1	PELP1	Nucleus, Cytoplasm	Activator, Repressor
P40855	PEX19	Peroxisomal biogenesis factor 19	PEX19	Peroxisome, Cytoplasm, Membrane	Peroxisome Biogenesis
P28328	PEX2	Peroxisome biogenesis factor 2	PEX2	Peroxisome, Membrane	Peroxisome Biogenesis
Q96HS1	PGAM5	Serine/threonine-protein phosphatase PGAM5, mitochondrial	PGAM5	Mitochondrion, Membrane, Mitochondrion Outer Membrane	Hydrolase
Q9Y3A3	PHOCN	MOB-like protein phocein	MOB4	Cytoplasm, Golgi Apparatus, Membrane	Transport
P42336	PK3CA	Phosphatidylinositol 4,5-bisphosphate 3-kinase catalytic subunit alpha isoform	PIK3CA	Cytosol, Plasma Membrane	Kinase, Serine/Threonine-protein Kinase, Transferase
O14939	PLD2	Phospholipase D2	PLD2	Membrane	Hydrolase
Q15435	PP1R7	Protein phosphatase 1 regulatory subunit 7	PPP1R7	Nucleus	Regulator enzyme
Q07869	PPARA	Peroxisome proliferator-activated receptor alpha	PPARA	Nucleus	Activator, DNA-binding, Receptor
P53041	PPP5	Serine/threonine-protein phosphatase 5	PPP5C	Cell Membrane, Nucleus, Cytoplasm, Membrane, Amyloid	Hydrolase, Protein Phosphatase
P30041	PRDX6	Peroxiredoxin-6	PRDX6	Lysosome, Cytoplasm	Antioxidant, Hydrolase, Multifunctional Enzyme, Oxidoreductase, Peroxidase
P07737	PROF1	Profilin-1	PFN1	Cytoskeleton, Cytoplasm	Actin-binding
P43686	PRSG6	26S proteasome regulatory subunit 6B	PSMC4	Nucleus, Cytoplasm, Proteasome	ATP-binding, Nucleotide-binding
Q9UNM6	PSD13	26S proteasome non-ATPase regulatory subunit 13	PSMD13	Cytosol, Extracellular Region, Nucleus	structural molecule activity
Q06203	PUR1	Amidophosphoribosyltransferase	PPAT	Cytosol	Allosteric Enzyme, Glycosyltransferase Transferase
UniProtKB	Protein Symbol	Protein Name	Gene Name	Location	Function
P22102	PUR2	Trifunctional purine biosynthetic protein adenosine-3	GART	Cytosol, Extracellular Region	Ligase, Multifunctional Enzyme, Transferase
O15067	PUR4	Phosphoribosylformylglycinamide synthase	PFAS	Cytoplasm	Ligase
P22234	PUR6	Multifunctional protein ADE2	PAICS	Cytosol, Extracellular Region, Cytoplasm, Membrane	Multifunctional Enzyme, Lyase, Ligase, Decarboxylase
P30566	PUR8	Adenylosuccinate lyase	ADSL	Cytosol	Lyase
P31939	PUR9	Bifunctional purine biosynthesis protein PURH	ATIC	Cytosol, Plasma Membrane, Extracellular Region, Membrane	Hydrolase, Multifunctional Enzyme, Transferase
P15153	RAC2	Ras-related C3 botulinum toxin substrate 2	RAC2	Cytoplasm	GTP-binding, Nucleotide-binding
O75628	REM1	GTP-binding protein REM 1	REM1	Plasma Membrane	Calmodulin-binding
P61353	RL27	60S ribosomal protein L27	RPL27	Endoplasmic Reticulum, Cytoplasm	Ribonucleoprotein, Ribosomal Protein
Q9H2W6	RM46	39S ribosomal protein L46, mitochondrial	MRPL46	Mitochondrion	Ribonucleoprotein, Ribosomal Protein
P62875	RPAB5	DNA-directed RNA polymerases I, II, and III subunit RPABC5	POLR2L	Nucleus, DNA-directed RNA Polymerase	Transcription

ENO1 expression in ovarian cancer cells

Q9Y3I0	RTCB	tRNA-splicing ligase RtcB homolog	RTCB	Nucleus, Cytoplasm	Ligase
Q9NVA2	SEP11	Septin-11	SEPT11	Cytoplasm, Cytoskeleton, Synapse, Cell Junction, Cell Projection	Cell Cycle, Cell Division
Q99719	SEPT5	Septin-5	SEPT5	Cytoplasm, Cytoskeleton	Cell Cycle, Cell Division
Q9UIU6	SIX4	Homeobox protein SIX4	SIX4	Nucleus, Cytoplasm	Developmental Protein, DNA-binding
Q96GM5	SMRD1	SWI/SNF-related, matrix-associated actin-dependent regulator of chromatin subfamily D member 1	SMARCD1	Nucleus	Chromatin regulator
Q9HAU4	SMUF2	E3 ubiquitin-protein ligase SMURF2	SMURF2	Nucleus, Membrane, Cell Membrane, Cytoplasm	Transferase
P54920	SNAA	Alpha-soluble NSF attachment protein	NAPA	Cell Membrane, Membrane	ER-Golgi Transport, Protein Transport, Transport
P36952	SPB5	Serpin B5	SER-PINB5	Extracellular Region	Serine-type endopeptidase inhibitor activity
P19623	SPEE	Spermidine synthase	SRM	Cytosol	Transferase
O43295	SRGP3	SLIT-ROBO Rho GTPase-activating protein 3	SRGAP3	Cytosol	GTPase-activation
UniProtKB	Protein Symbol	Protein Name	Gene Name	Location	Function
P31948	STIP1	Stress-induced-phosphoprotein 1	STIP1	Cytoplasm, Nucleus	Mediates the association of the molecular chaperones
Q9Y3F4	STRAP	Serine/threonine kinase receptor-associated protein	STRAP	Nucleus, Cytoplasm	mRNA Processing, mRNA Splicing
P17600	SYN1	Synapsin-1	SYN1	Golgi Apparatus, Synapse, Cell Junction	Actin-binding
P54577	SYC	Tyrosine-tRNA ligase, cytoplasmic	YARS	Cytoplasm	Aminoacyl-tRNA Synthetase, Ligase, RNA-binding, tRNA-binding
Q9H4B7	TBB1	Tubulin beta-1 chain	TUBB1	Cytoplasm, Cytoskeleton, Microtubule	GTP-binding, Nucleotide-binding
Q99832	TCPH	T-complex protein 1 subunit eta	CCT7	Cytoplasm	Chaperone
P40227	TCPZ	T-complex protein 1 subunit zeta	CCT6A	Cytoplasm	Chaperone
Q59G49	TIA1	TIA1 cytotoxic granule-associated RNA-binding protein-like 1	N/A	Nucleus	RNA-binding
Q01085	TIAR	Nucleolysin TIAR	TIAL1	Nucleus, Cytoplasm	RNA-binding
P16035	TIMP2	Metalloproteinase inhibitor 2	TIMP2	Extracellular Region	Metalloenzyme Inhibitor, Metalloprotease Inhibitor, Protease Inhibitor
Q8WZ42	TITIN	Titin	TTN	Cytoplasm, Nucleus	Calmodulin-binding, Kinase, Serine/Threonine-protein Kinase, Transferase
P01375	TNFA	Tumor necrosis factor	TNF	Cell Membrane, Membrane, Extracellular Region	Cytokine
P07477/ P35030	TRY1/ TRY3	Trypsin-1/Trypsin-3	PRSS1/ PRSS3	Extracellular Region	Hydrolase, Protease, Serine Protease
Q99816	TS101	Tumor susceptibility gene 101 protein	TSG101	Cytoplasm, Cytoskeleton, Endosome, Membrane, Nucleus	Cell Cycle, Cell Division, Growth Regulation, Host-virus Interaction, Protein Transport, Transport
Q15672	TWST1	Twist-related protein 1	TWIST1	Nucleus	Activator, Developmental Protein, DNA-binding, Repressor
Q9UK80	UBP21	Ubiquitin carboxyl-terminal hydrolase 21	USP21	Nucleus, Cytoplasm	Activator, Chromatin Regulator, Hydrolase, Protease, Thiol Protease
P09936	UCHL1	Ubiquitin carboxyl-terminal hydrolase isozyme L1	UCHL1	Endoplasmic Reticulum, Membrane, Cytoplasm	Hydrolase, Ligase, Protease, Thiol Protease
O60701	UGDH	UDP-glucose 6-dehydrogenase	UGDH	Cytosol, Extracellular Region, Nucleus	Allosteric Enzyme, Oxidoreductase
P67809	YBOX1	Nuclease-sensitive element-binding protein 1	YBX1	Nucleus, Cytoplasm, Extracellular Region	Activator, DNA-binding, Mitogen, Repressor, RNA-binding

ENO1 expression in ovarian cancer cells

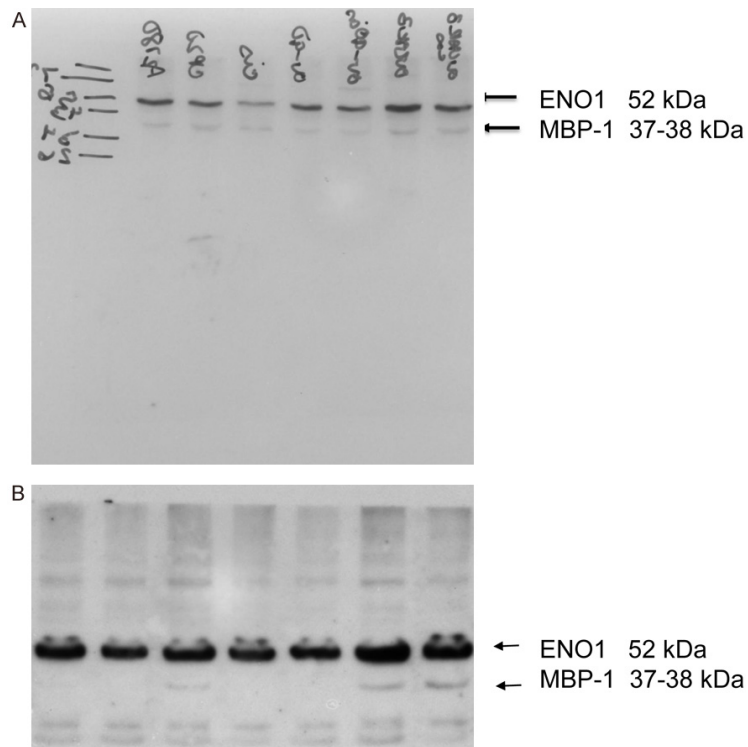
Supplementary Table 2. List of the 48 proteins differentially abundant in A280 vs. A2780CP20 cells

Gene Name	Protein Name	Ratio (A2780CP20/A2780)
ACOT7	Cytosolic acyl coenzyme A thioester hydrolase	-1.390
ALDH7A1	Alpha-aminoadipic semialdehyde dehydrogenase	2.740
ALDOA	Fructose-bisphosphate aldose A	2.690
ASNS	Asparagine synthetase [glutamine-hydrolyzing]	-1.920
ATIC	Bifunctional purine biosynthesis protein PURH	-1.350
ATP5F1A	ATP synthase subunit alpha, mitochondrial	1.610
BANF1	Barrier-to-autointegration factor	2.680
CAP1	Adenylyl cyclase-associated protein 1	-1.660
CAPZA1	F-actin-capping protein subunit alpha-1	-1.64
CAZA1	F-actin-capping protein subunit alpha-1	-1.640
CCT6A	T-complex protein 1 subunit zeta	-1.120
CCT7	T-complex protein 1 subunit eta	2.260
CSTB	Cystatin-B	-2.670
DDT	D-dopachrome decarboxylase	5.070
EIF2S1	Eukaryotic translation inhibition factor 2 subunit 1	-1.460
ENAH	Protein enabled homolog	-1.430
ENO1	Alpha-enolase	-2.690
GLUD1	Glutamate dehydrogenase 1, mitochondrial	2.380
HDGF	Hepatoma-derived growth factor	-1.360
HNRNPC	Heterogeneous nuclear ribonucleoprotein C1/C2	-1.420
ILKAP	Integrin-linked kinase-associated serine/threonine phosphatase 2C	-2.520
IMPDH2	Inosine-5'-monophosphate dehydrogenase 2	-1.510
LMNA	Prelamin-A/C	-1.600
MDH1	Malate dehydrogenase, cytoplasmic	-1.260
MRPL46	39S ribosomal protein L46, mitochondrial	1.620
NAPA	Alpha-soluble NSF attachment protein	-1.540
PAICS	Multifunctional protein ADE2	-1.880
PEX19	Peroxisomal biogenesis factor 19	-1.440
PFN1	Profilin-1	-1.540
PGD	6-phosphogluconate dehydrogenase, decarboxylating	-2.010
PPP1R7	Protein phosphatase 1 regulatory subunit 7	-1.470
PRDX6	Peroxiredoxin-6	2.780
PSMD13	26S proteasome non-ATPase regulatory subunit 13	-1.430
RPL27	60S ribosomal protein L27	4.340
RTCB	tRNA-splicing ligase homolog	1.910
SEPT11	Septin-11	-2.450
SRM	Spermidine synthase	-1.420
STIP1	Stress-induced-phosphoprotein 1	-2.250
STRAP	serine/threonine kinase receptor associated protein	-1.460
TIA1	TIA1 cytotoxic granule-associated RNA-binding protein-like1	-1.970
TRY3	Trypsin-3	-1.460
TTN	Titin	2.460
TUFM	Elongation factor Tu, mitochondrial	-1.290
UCHL1	Ubiquitin carboxyl-terminal hydrolase 21	-1.570
UGDH	UDP-glucose 6-dehydrogenase	1.690
YARS	tyrosyl-tRNA synthetase	-1.780
YBX1	Nuclease-sensitive element-binding protein 1	-1.740
YWHAE	14-3-3 protein epsilon	-1.730

ENO1 expression in ovarian cancer cells

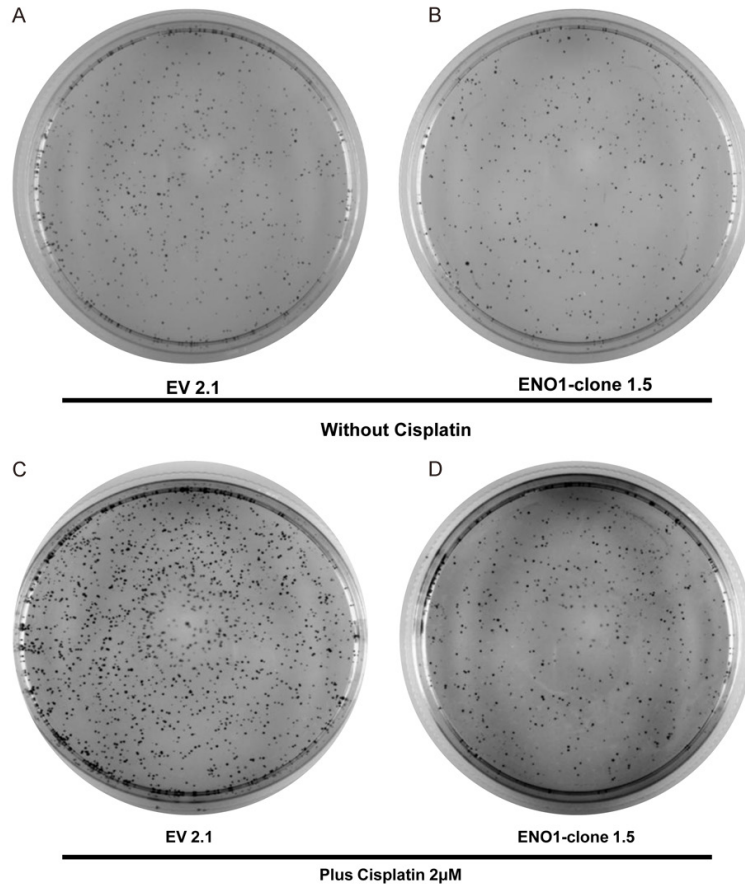
Supplementary Table 3. Concentrations of cisplatin inhibiting 50% of cell viability. Incubation with cisplatin: 72-hr following by Alamar Blue assay

Cell line	IC ₅₀ cisplatin (μM)
A2780	0.5-0.8
A2780CP20	20-30
A2780CIS	4.3
OV90	3.5
OV90CIS	9.9
OVCAR3	2.8
OVCAR3CIS	12.6



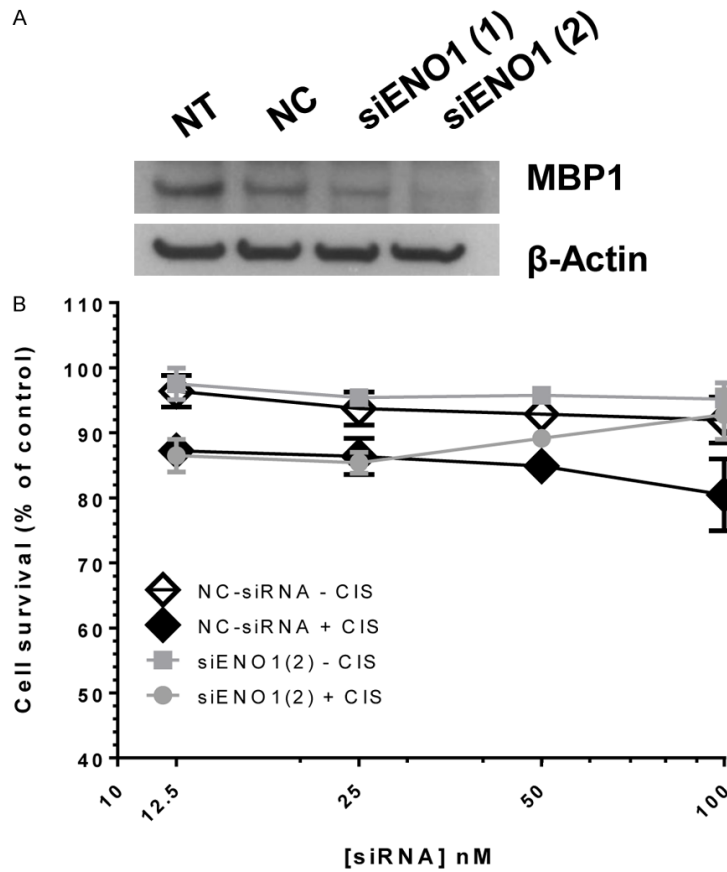
Supplementary Figure 1. Western blot images. A. Original Western blots showing the ENO1 and MBP-1 levels in the ovarian cancer cell panel. B. Western blot image showing the ENO1 and MBP-1 levels in the stable transfected clones. To observe a MBP-1 band we overexposed the X-ray film (30 minutes).

ENO1 expression in ovarian cancer cells



Supplementary Figure 2. Colony formation assays. Images of whole Petri dishes showed in **Figure 3C**. Experiments were performed as described in the legend of **Figure 3**.

ENO1 expression in ovarian cancer cells



Supplementary Figure 3. In vitro effect of siRNA-mediated ENO1/MBP-1 silencing on cell viability. A. A2780 cells (3×10^4 cells/ml) were transiently transfected with siRNAs as described in the section of “Materials and Methods” section. The band in the Western blot correspond to MBP1 (MW: 37 kDa). The ENO1-siRNA(1) had not visible effects in the MBP1 levels. However the ENO1-siRNA(2) decreased the MBP1 levels as expected. B. A2780 cells (3×10^4 cells/ml) cells were plated in 96-wells and the next day cells were transfected with siRNAs as described in the legend of **Figure 3**. Twenty-four hours after siRNA transfection different doses of cisplatin were added to the cells. Forty-eight hours later cell viability was assessed as described in the “Materials and Methods” section. Averages \pm SEM are shown for three independent experiments. The siENO1(2) which target both ENO1 and MBP-1 did not have significant effects of the sensitivity of cells to cisplatin (CIS) treatment.

