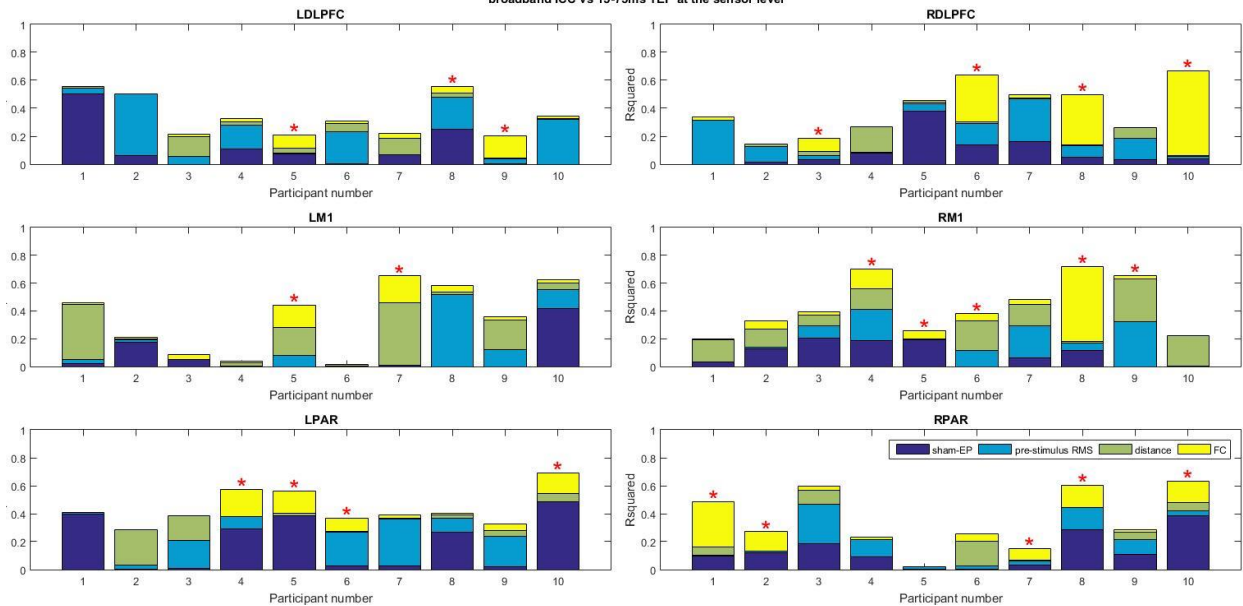
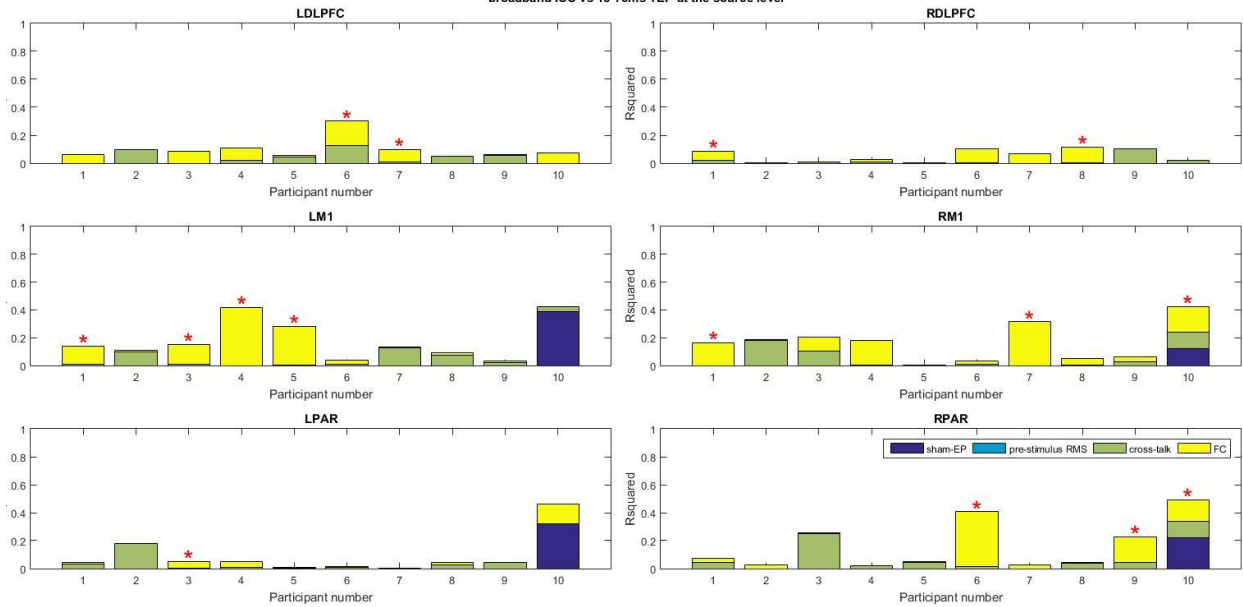


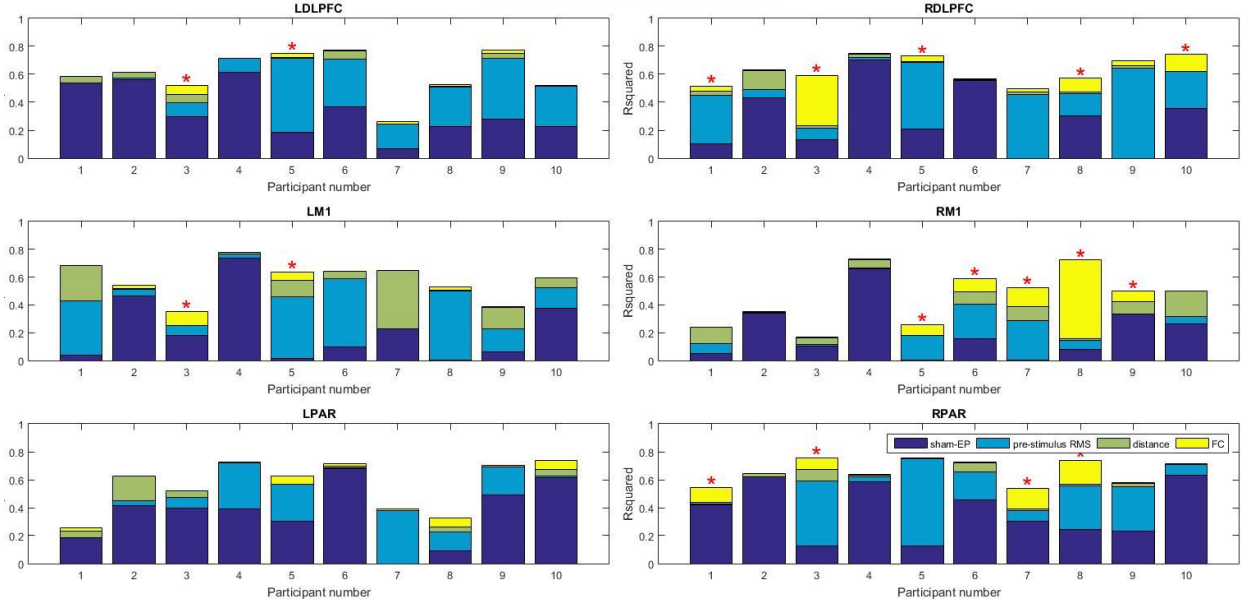
**broadband ICC vs 15-75ms TEP at the sensor level**



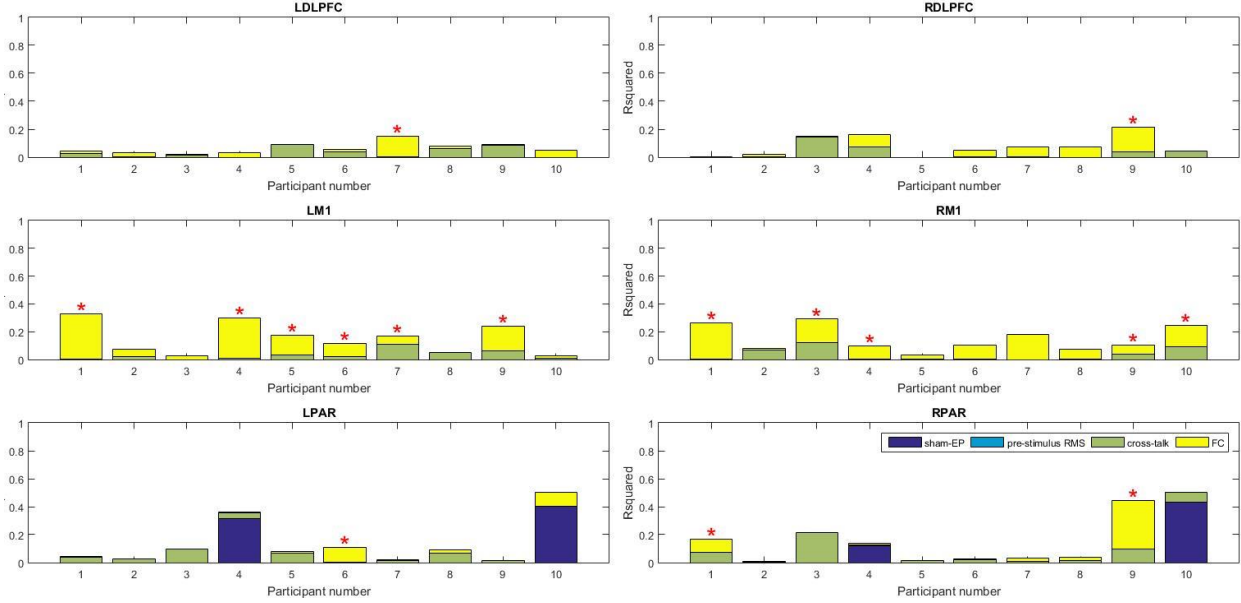
**broadband ICC vs 15-75ms TEP at the source level**



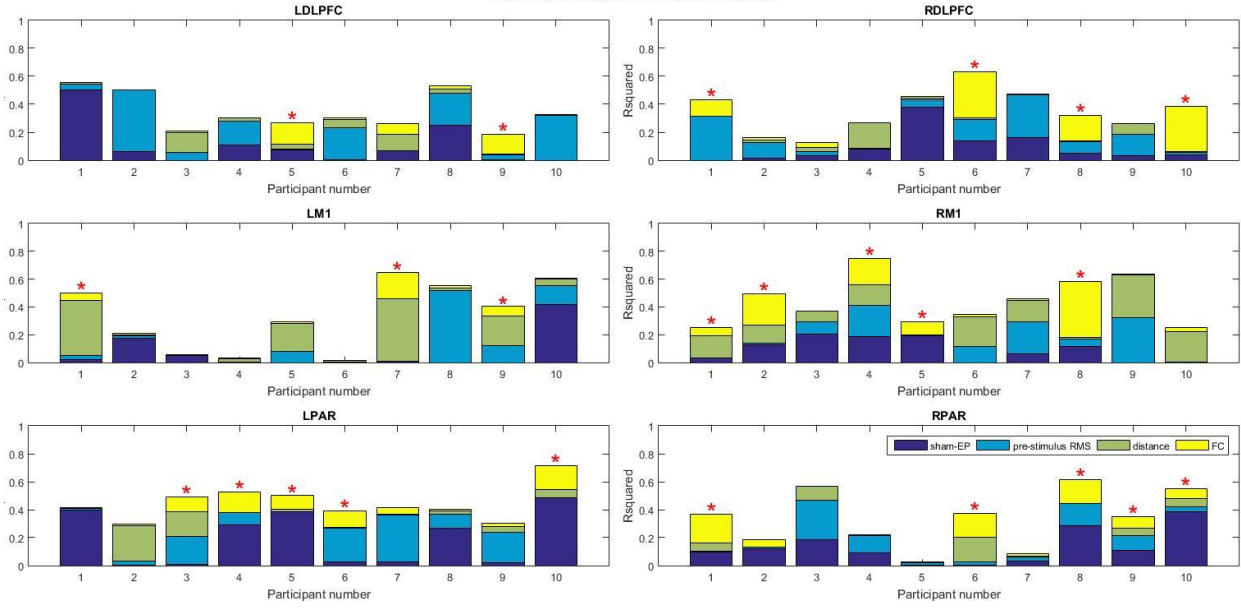
broadband ICC vs 15-400ms TEP at the sensor level



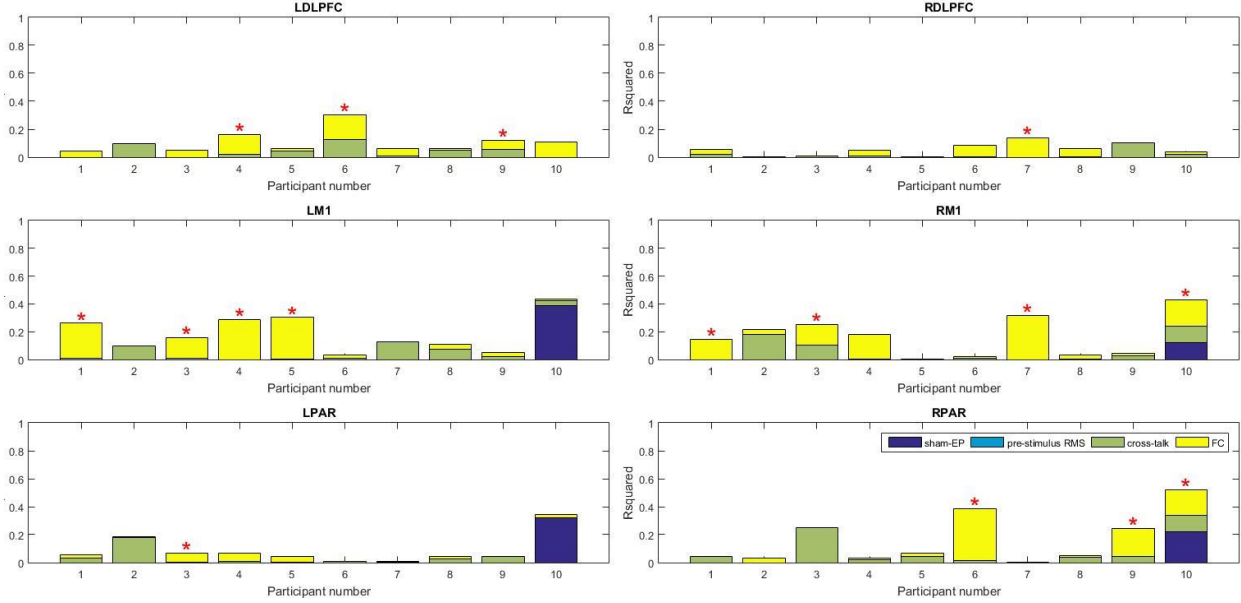
broadband ICC vs 15-400ms TEP at the source level



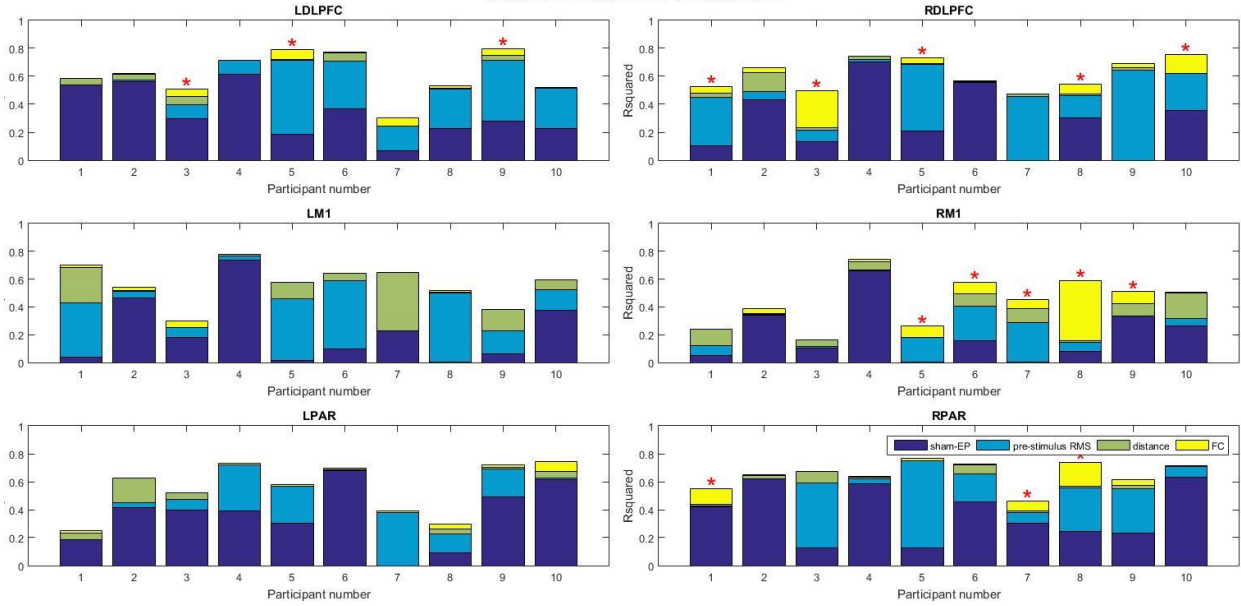
**broadband MI vs 15-75ms TEP at the sensor level**



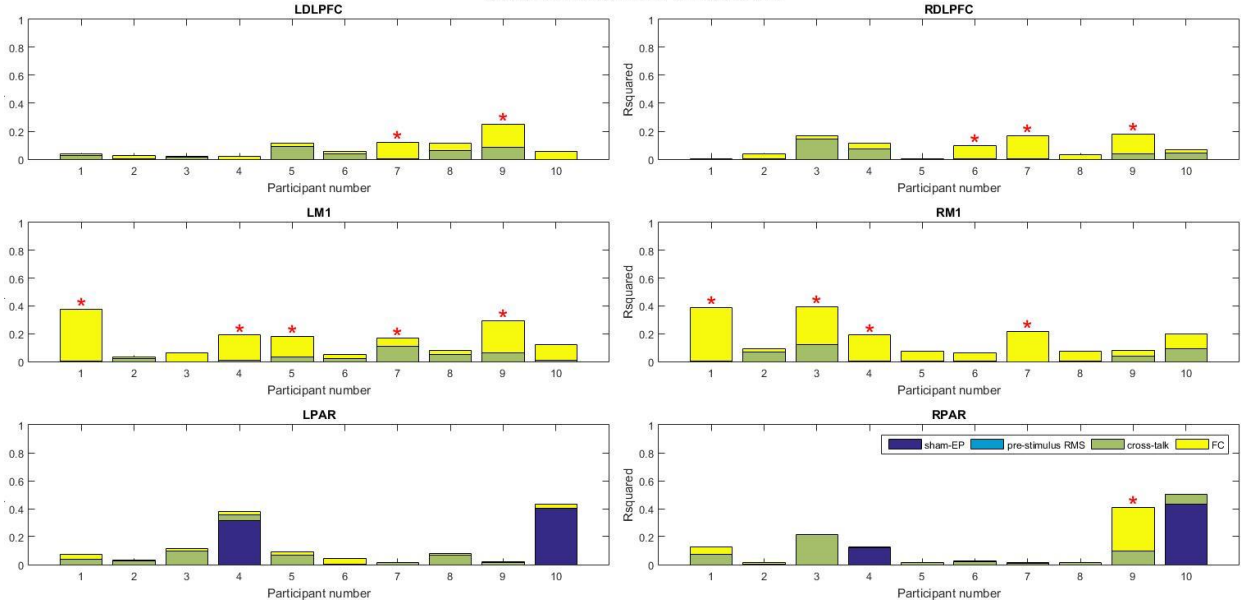
**broadband MI vs 15-75ms TEP at the source level**



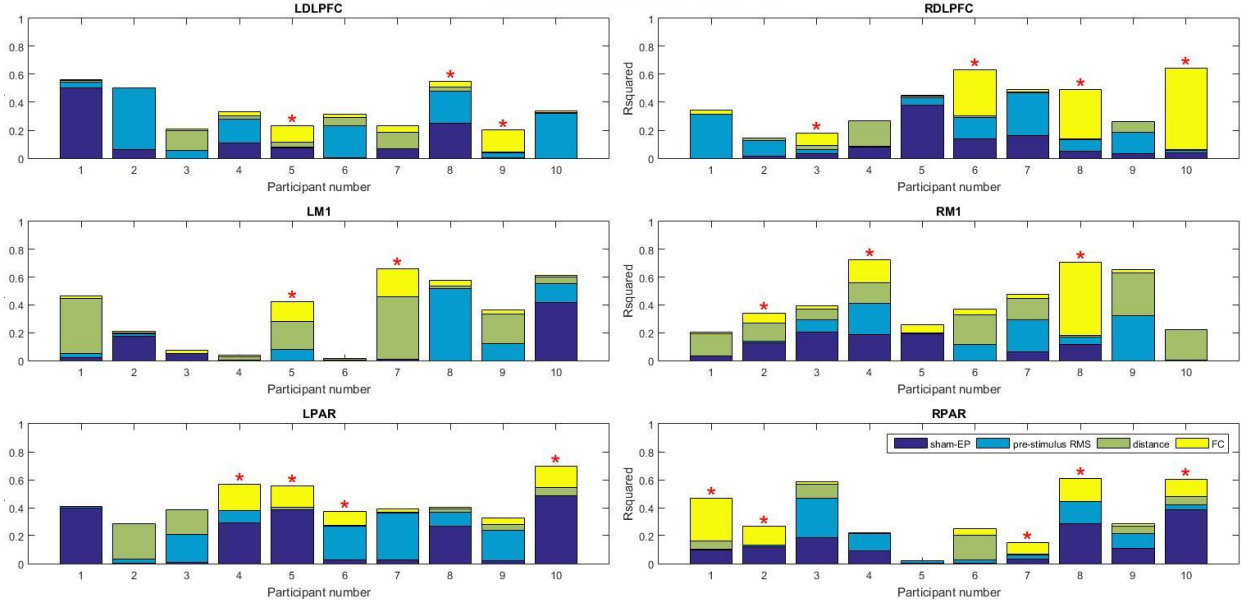
**broadband MI vs 15-400ms TEP at the sensor level**



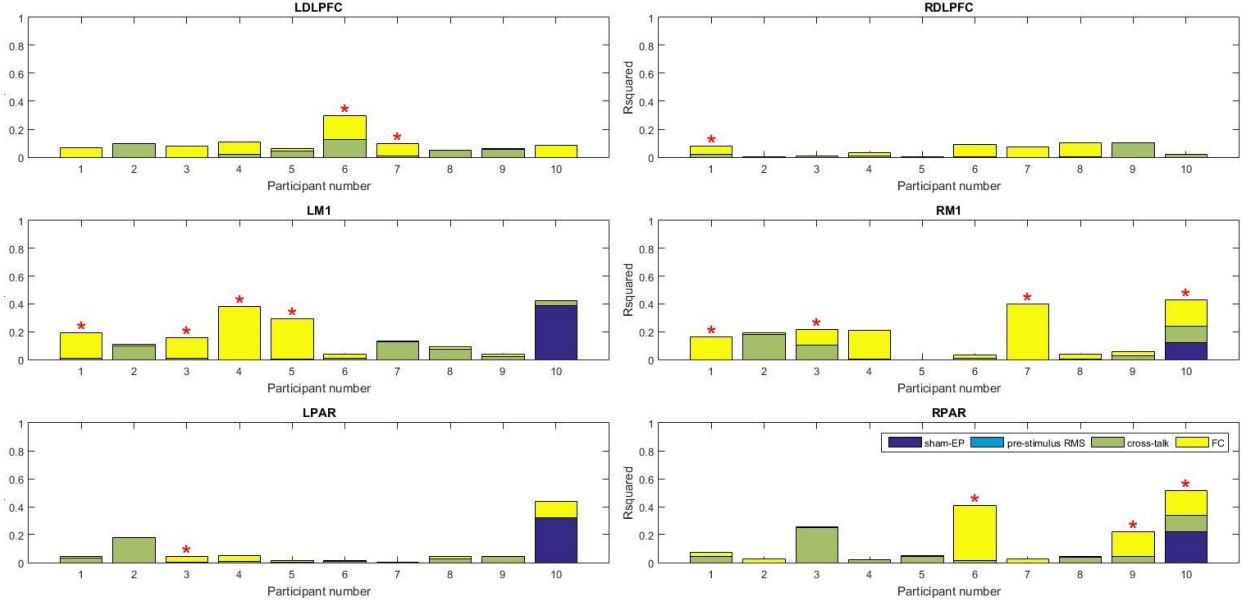
**broadband MI vs 15-400ms TEP at the source level**



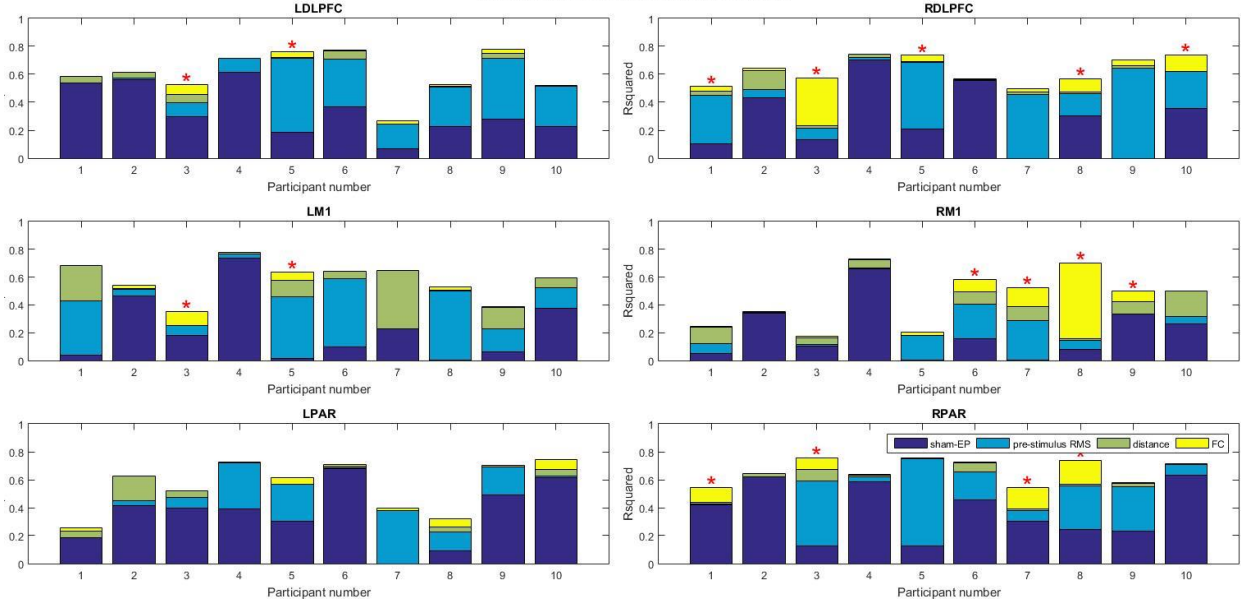
broadband PLV vs 15-75ms TEP at the sensor level



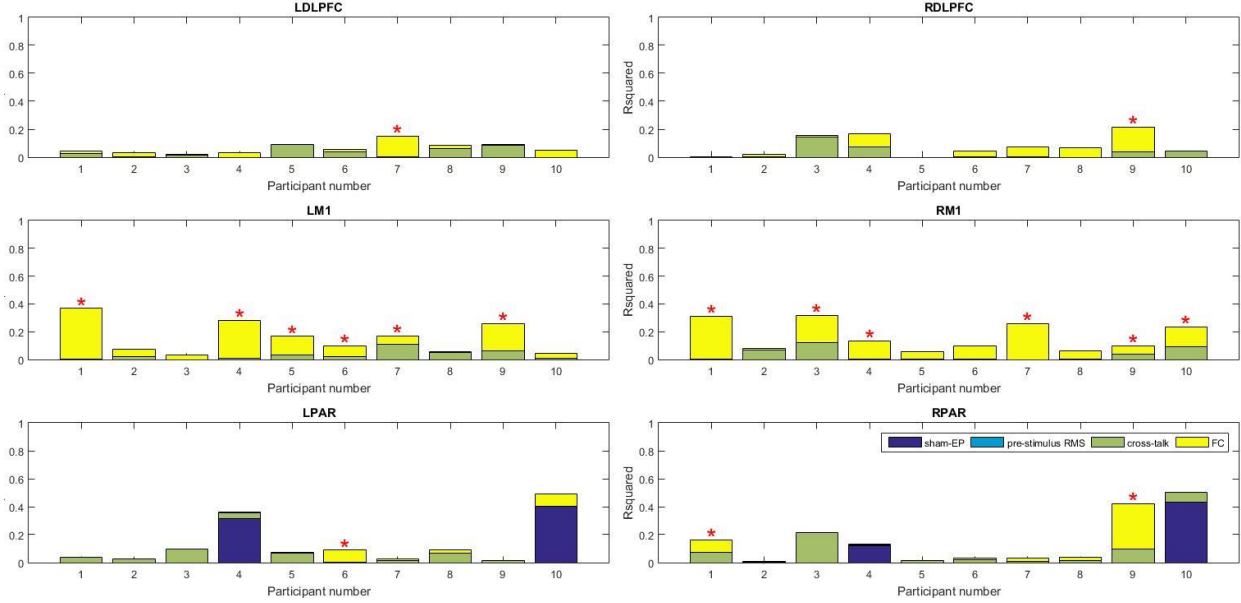
broadband PLV vs 15-75ms TEP at the source level



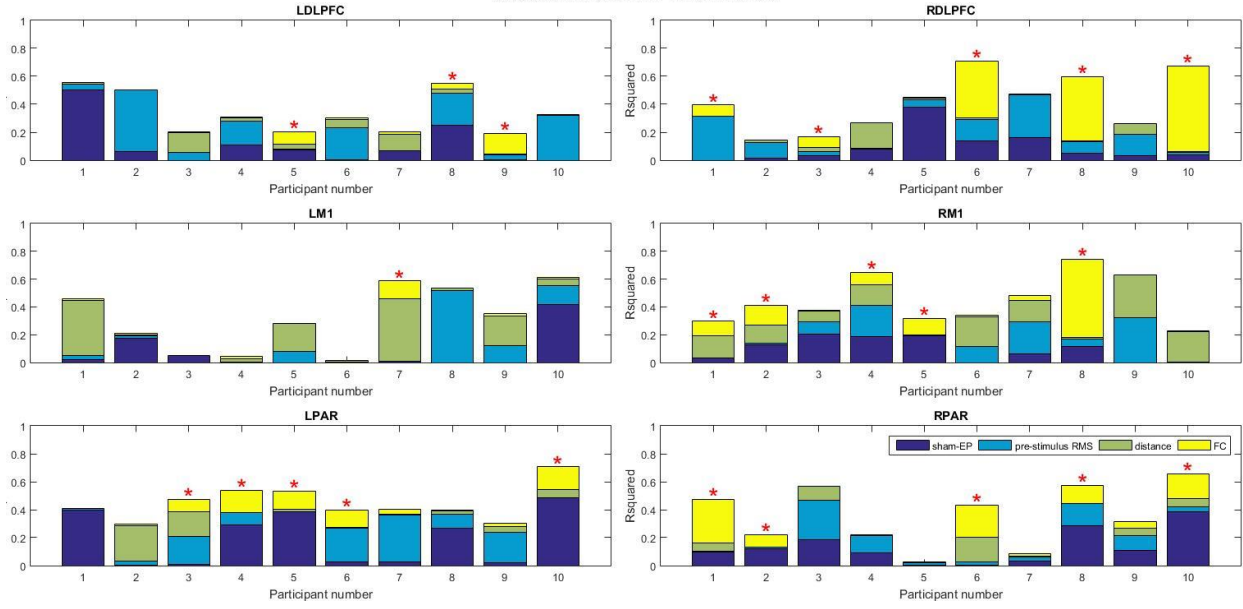
broadband PLV vs 15-400ms TEP at the sensor level



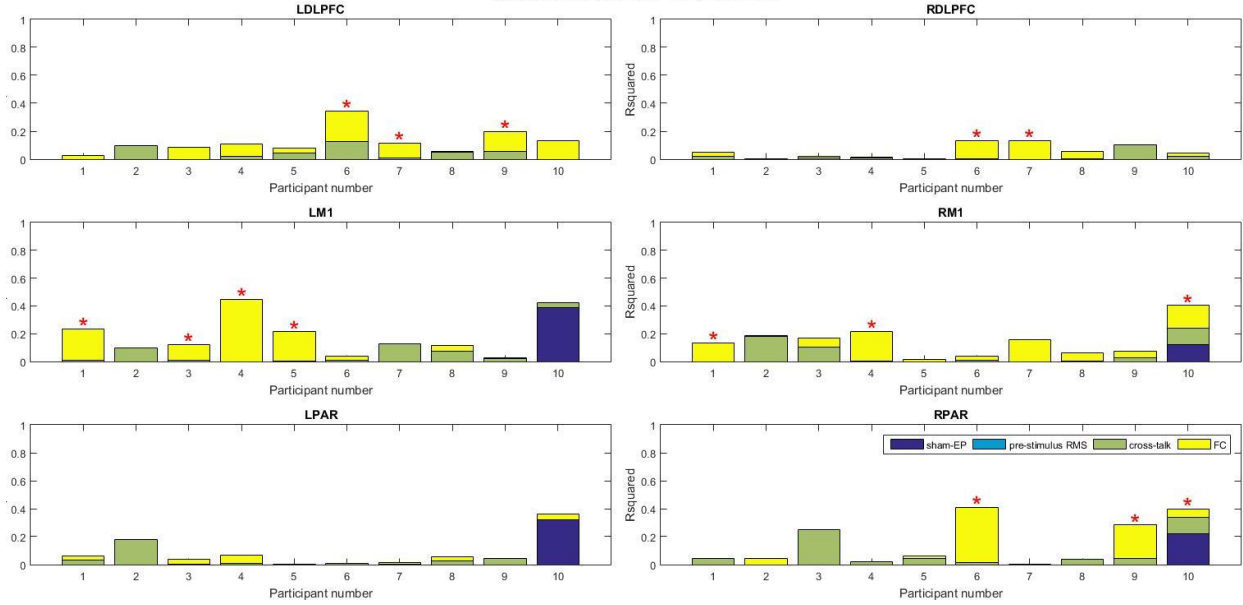
broadband PLV vs 15-400ms TEP at the source level



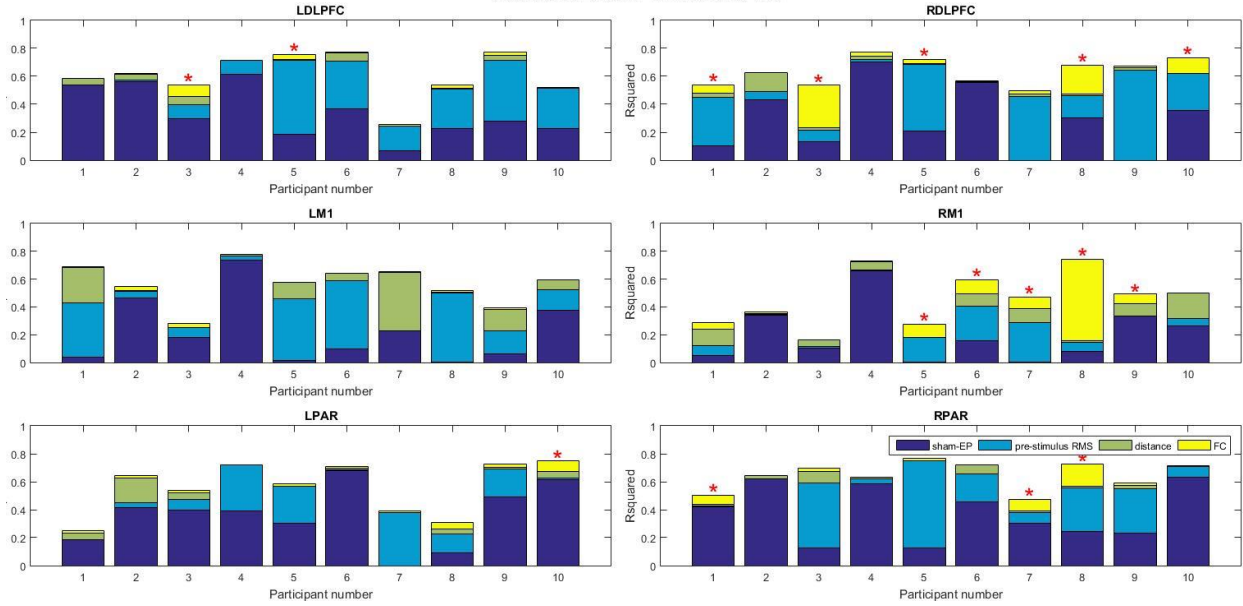
**broadband R vs 15-75ms TEP at the sensor level**



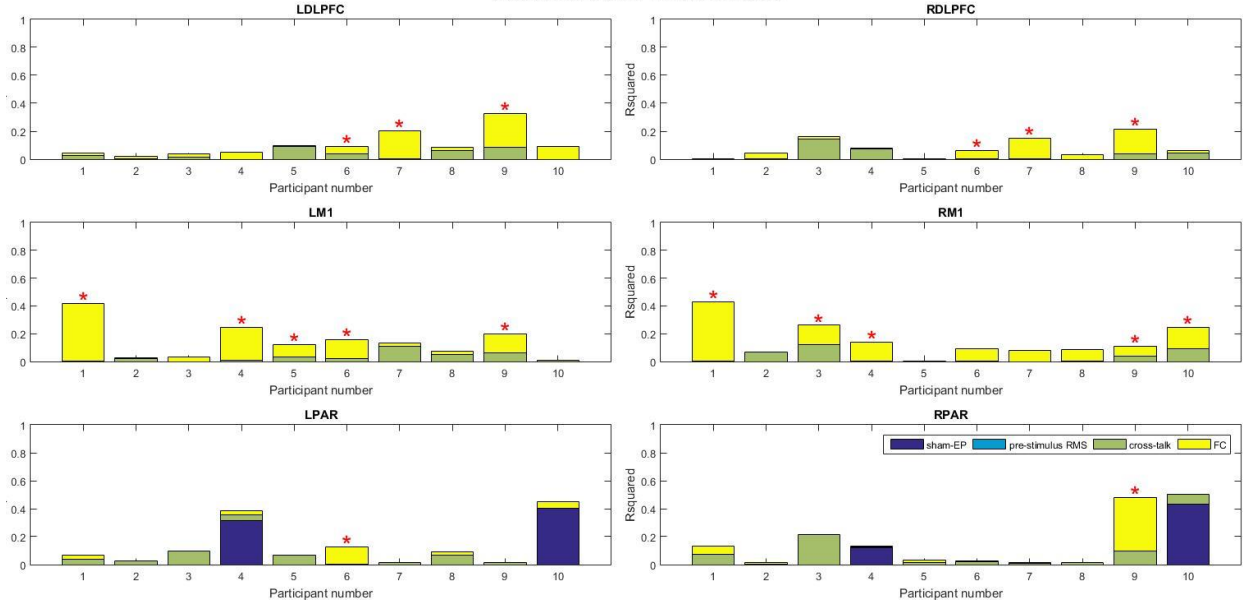
**broadband R vs 15-75ms TEP at the source level**



**broadband R vs 15-400ms TEP at the sensor level**

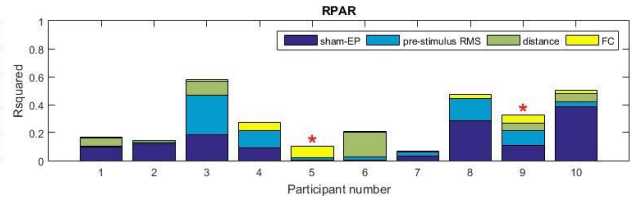
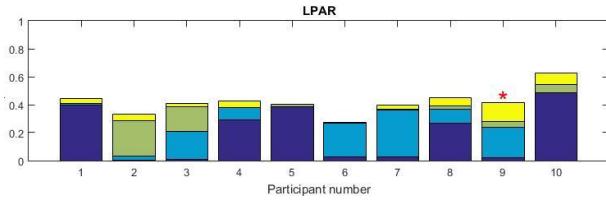
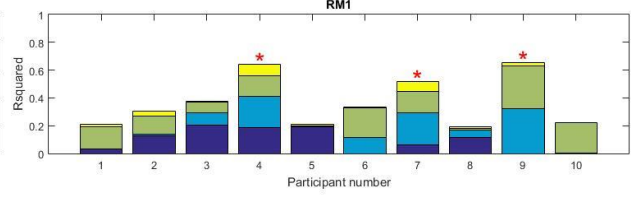
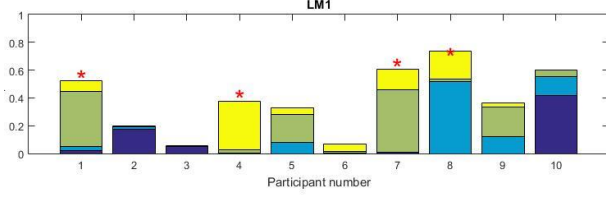
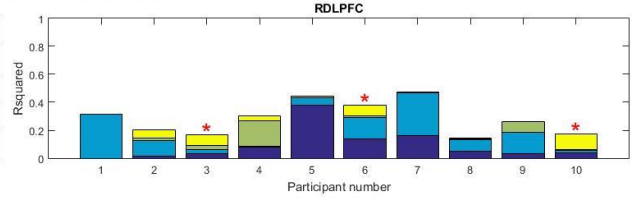
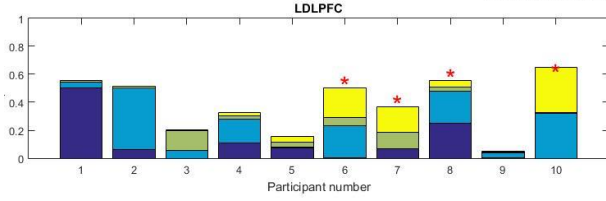


**broadband R vs 15-400ms TEP at the source level**

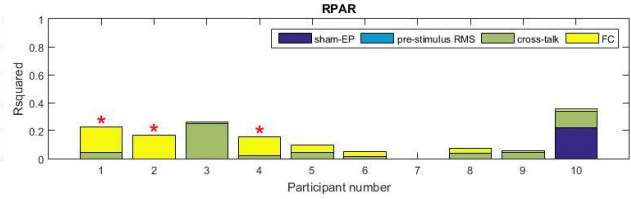
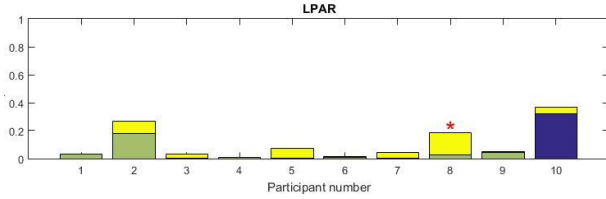
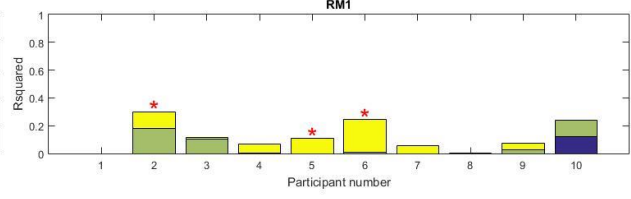
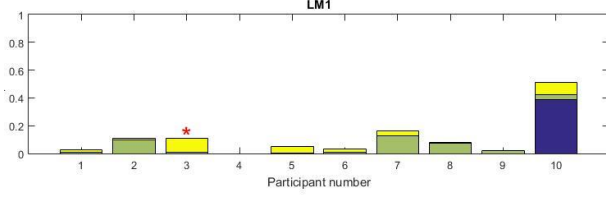
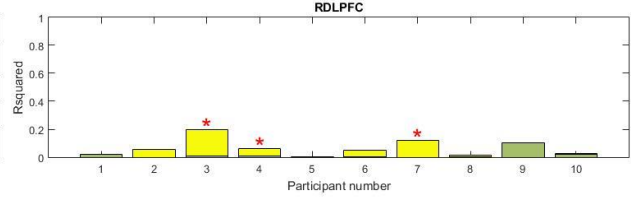
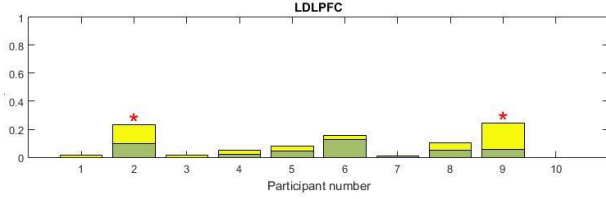




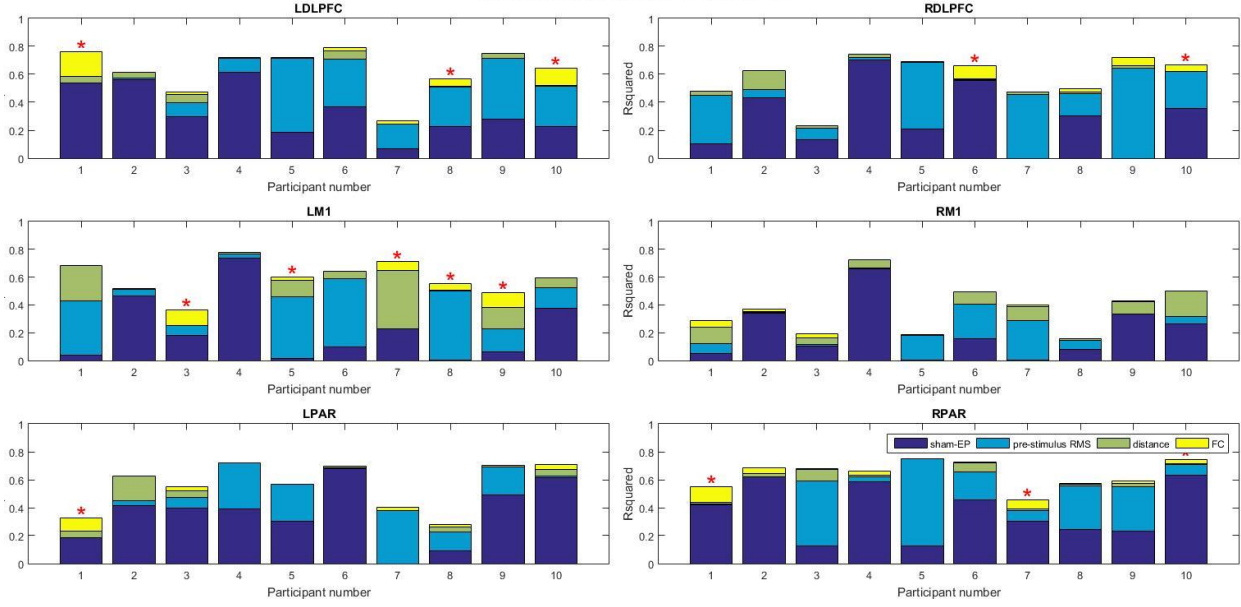
broadband wPLI vs 15-75ms TEP at the sensor level



broadband wPLI vs 15-75ms TEP at the source level



broadband wPLI vs 15-400ms TEP at the sensor level



broadband wPLI vs 15-400ms TEP at the source level

