

Supplementary Online Content

Wiviott SD, Giugliano RP, Morrow DA, et al. Effect of evolocumab on type and size of subsequent myocardial infarction: a prespecified analysis of the FOURIER randomized clinical trial. *JAMA Cardiol*. Published online April 29, 2020.
doi:10.1001/jamacardio.2020.0764

eTable: Baseline Characteristics by MI During Follow Up

eFigure 1: CONSORT Diagram

eFigure 2: KM Rates of MI Stratified by Universal MI Types

eFigure 3: Effect of Evolocumab by Month of Treatment

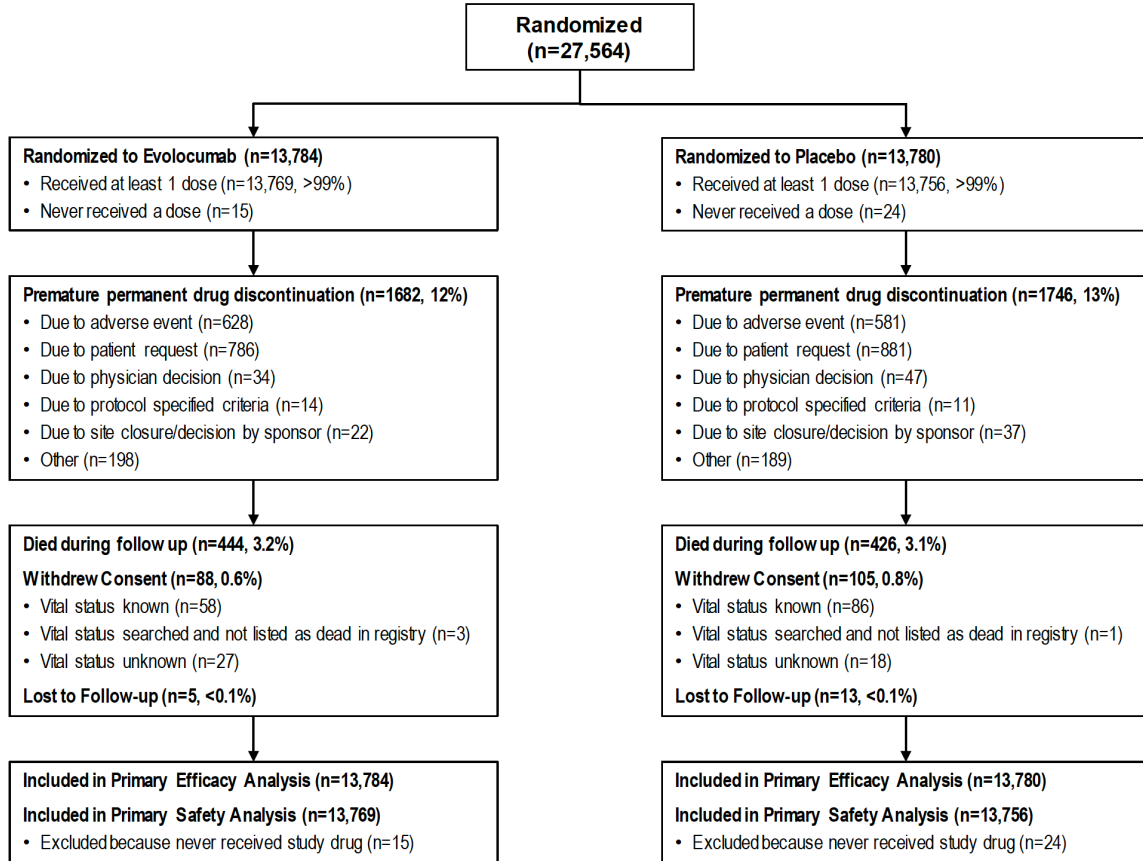
This supplementary material has been provided by the authors to give readers additional information about their work.

eTable: Baseline Characteristics by MI During Follow Up

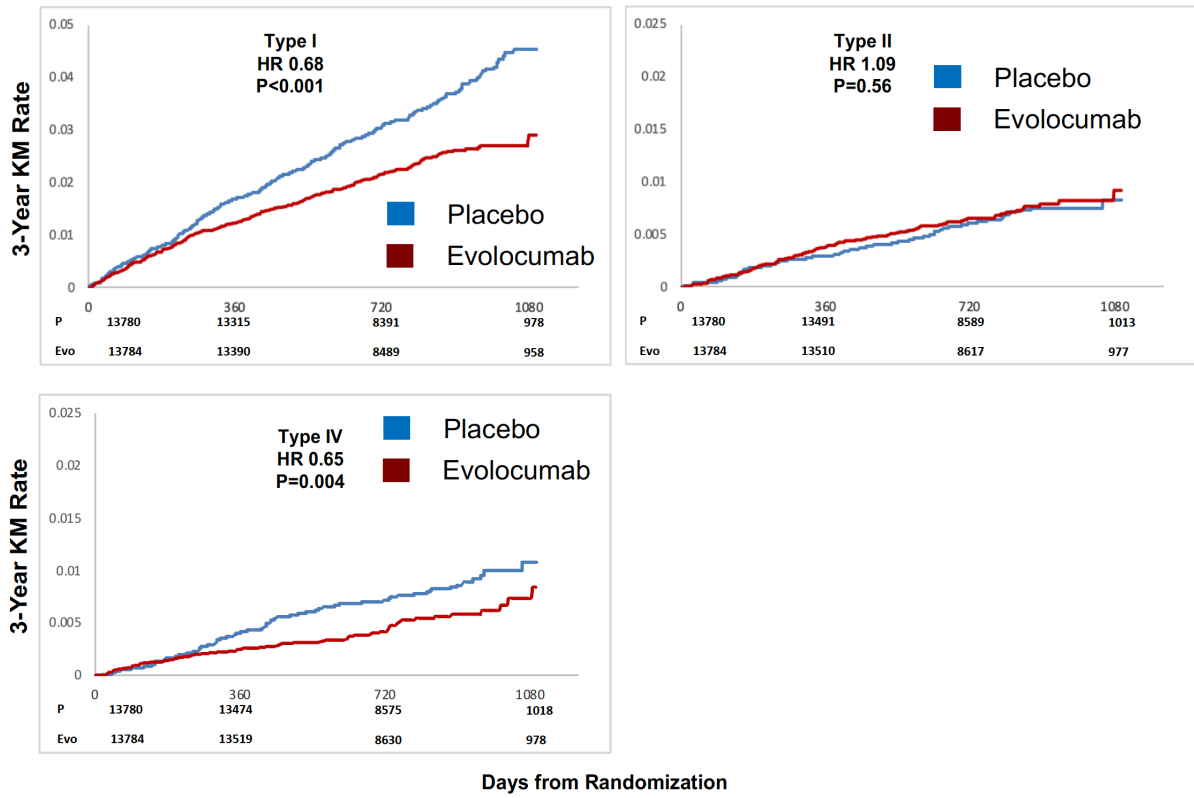
FOURIER							
<i>Baseline table, MI vs No MI during FU, ITT cohort</i>							
	MI during FU (%)	n	N	No MI during FU (%)	n	N	p-value
Male	77.9	862	1107	75.3	19933	26457	0.056
Caucasian	87.4	968	1107	85.0	22490	26457	0.026
Age >=75 years	12.3	136	1107	9.0	2390	26457	<0.001
Age >=65 years	46.3	513	1107	44.4	11741	26457	0.198
LDL at final screening >=85 mg/dl	69.9	774	1107	64.9	17176	26453	<0.001
Region							<0.001
North America	24.0	266	1107	16.3	4305	26457	
Europe	61.2	678	1107	63.0	16657	26457	
Latin America	4.2	47	1107	6.7	1776	26457	
Asia	10.5	116	1107	14.1	3719	26457	
History of Prior MI	89.8	994	1107	80.7	21357	26457	<0.001
History of Stroke	15.8	175	1107	19.5	5162	26457	0.002
History of PAD	18.0	199	1107	13.0	3443	26457	<0.001
Time to prior MI <2 years	45.7	454	993	37.3	7948	21327	<0.001
>=2 Prior MIs	40.3	401	994	22.9	4884	21338	<0.001
Hx residual CAD with >= 40% stenosis in >=2 vessels	30.4	336	1104	21.4	5671	26441	<0.001
History of TIA	6.3	70	1107	5.4	1439	26449	0.206
History of Hypertension	82.7	916	1107	80.0	21168	26456	0.026
History of Diabetes	46.2	511	1107	36.2	9570	26457	<0.001
Current Smoker	27.3	302	1107	28.3	7475	26455	0.480
History CHF	26.4	292	1107	23.1	6102	26457	0.010
Prior coronary revasc	78.0	862	1105	65.6	17331	26420	<0.001
Prior CABG	29.7	328	1105	18.5	4898	26418	<0.001
History PCI	66.7	737	1105	55.8	14736	26420	<0.001

MI = myocardial infarction, FU = follow up n = number with a given characteristic, N = Number of subjects with or without MI, LDL = low density lipoprotein, PAD = peripheral artery disease, CAD = coronary artery disease, TIA = transient ischemic attack, CHF = congestive heart failure, CABG = coronary artery bypass grafting surgery, PCI = percutaneous coronary intervention

eFigure 1: CONSORT Diagram



eFigure 2: KM Rates of MI Stratified by Universal MI Types



eFigure 3: Effect of Evolocumab by month of treatment.

