

### Additional File 3

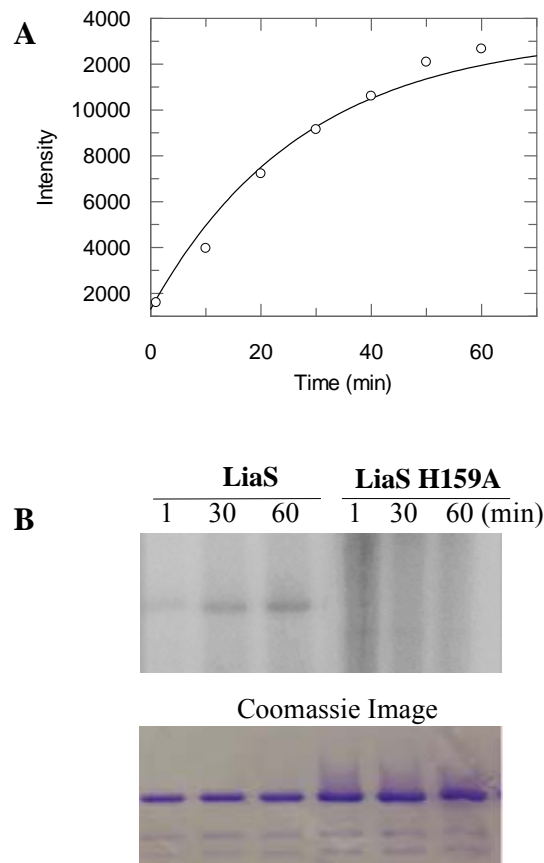


Fig. S3. Autokinase activity of LiaS. (A) LiaS at 5  $\mu\text{M}$  was incubated with 250  $\mu\text{M}$  [ $\gamma\text{-}^{32}\text{P}$ ] ATP in PB at 25°C. The reaction was quenched at different time intervals and samples were analyzed by a 12.5% SDS-PAGE. Phosphorylation of LiaS with  $\gamma\text{-}^{32}\text{P}$  was quantified by exposing the SDS-PAGE to a phosphor screen and measure the densitometry of each protein band (the Intensity values (Y-axis) in the graph) using ImageJ. (B) Autokinase kinase activities of LiaS and LiaSH159. LiaS at 5  $\mu\text{M}$  was incubated with 25  $\mu\text{M}$  [ $\gamma\text{-}^{32}\text{P}$ ] ATP in PB at 25°C. The reaction was quenched at different time intervals and samples were analyzed by a 12.5% SDS-PAGE. The SDS-PAGE was scanned with a phosphor screen to quantify the incorporation of  $\gamma\text{-}^{32}\text{P}$  to LiaS (top panel). The bottom panel is a coomassie stain of the SDS-PAGE to ensure equal loading of the samples.