

## Additional File 9

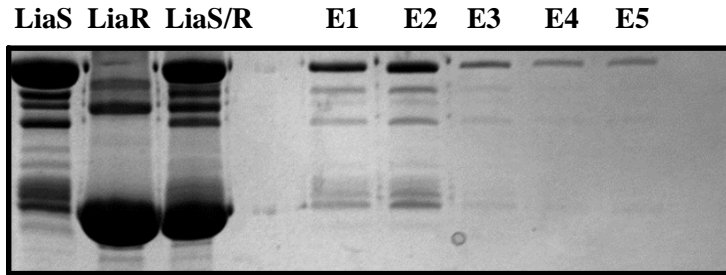


Fig. S9. Pull down assay for LiaS and LiaR where GST tagged LiaS was immobilized glutathione resin at room temperature. A 12.5% SDS gel showing LiaS, LiaR, and LiaS+LiaR used as MW controls. E1 to E5 indicate elution fractions collected with 10 mM reduced glutathione in 50 mM Tris (pH 8.0), after 5 minutes incubation. The proteins bands with MW close to LiaR were analyzed by in-gel trypsin digestion followed by mass-spectrometry to probe presen of LiaR. No LiaR was identified, hence we concluded LiaR was not pulled down in this experiments.