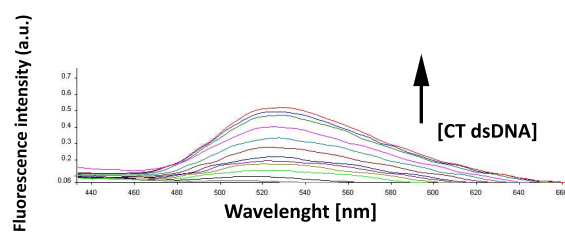
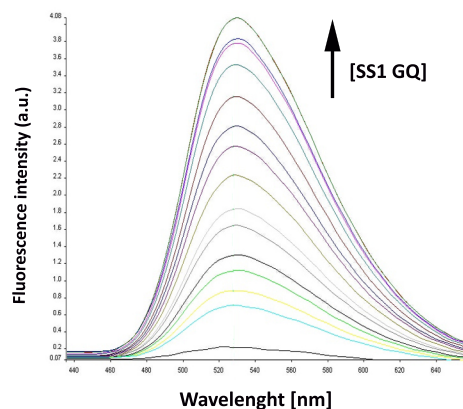
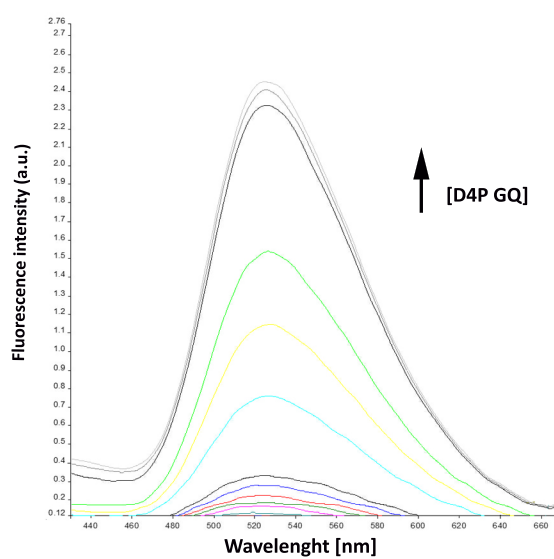
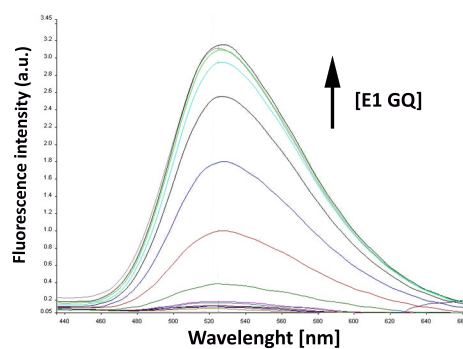
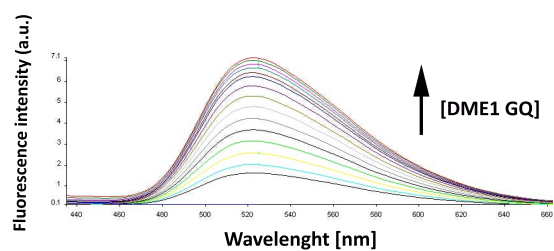


Supplementary Figure 1



Supp. 1: Fluorescence spectra of berberine ($0.5 \mu\text{M}$) in the presence of increasing concentrations of DME1, D4P, CT dsDNA, E1 and SS1 GQ oligonucleotides ($0-10 \mu\text{M}$), in Tris-HCl (10 mM), KCl (100 mM) pH 7.0 , measured at room temperature. Abbreviations: arbitrary units, a.u.