

Fig. S1. HPLC chromatogram of [^{18}F]fluoroethyl crizotinib [^{18}F]**1**, co-injected with the non-radioactive standard **1**. Analytical C_{18} column; 60% MeCN/40% H_2O /0.1% TFA, flow 1 mL/min.

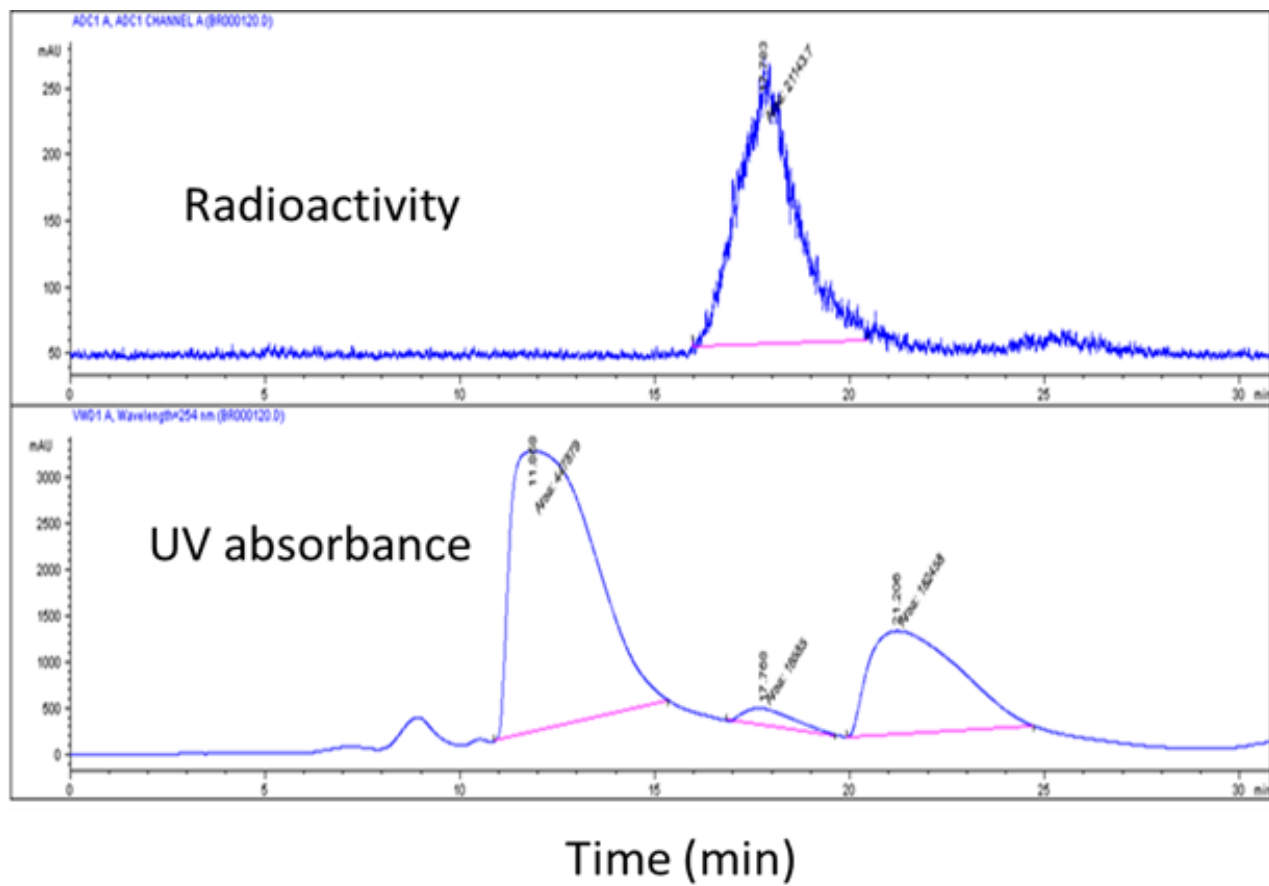


Fig. S2. Purification of [^{18}F]fluoroethyl alectinib [^{18}F]**4** by HPLC. Semi-preparative reverse phase amide column; 38% MeCN/62% H₂O/0.1% TFA, flow 4 mL/min.

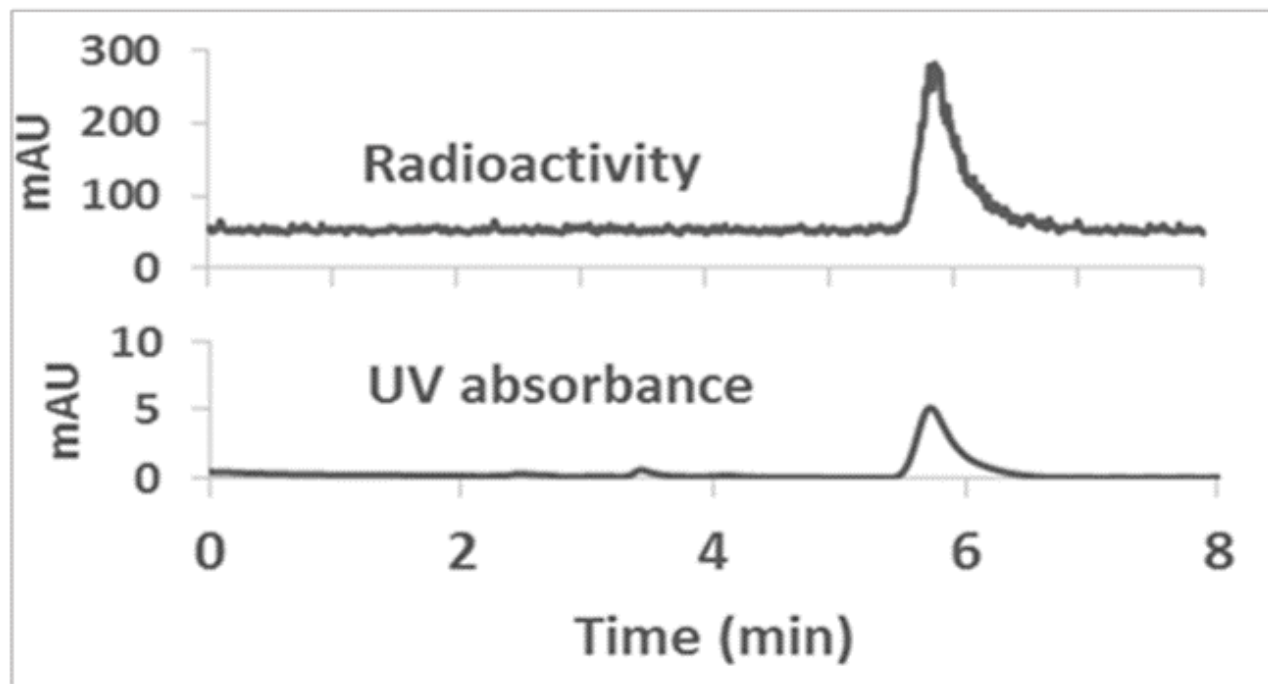


Fig. S3. HPLC chromatogram of [^{18}F]fluoroethyl alectinib [^{18}F]**4**, co-injected with the non-radioactive standard **4**. Analytical C_{18} column; 40% MeCN/60% H_2O /0.1% TFA, flow 1 mL/min.