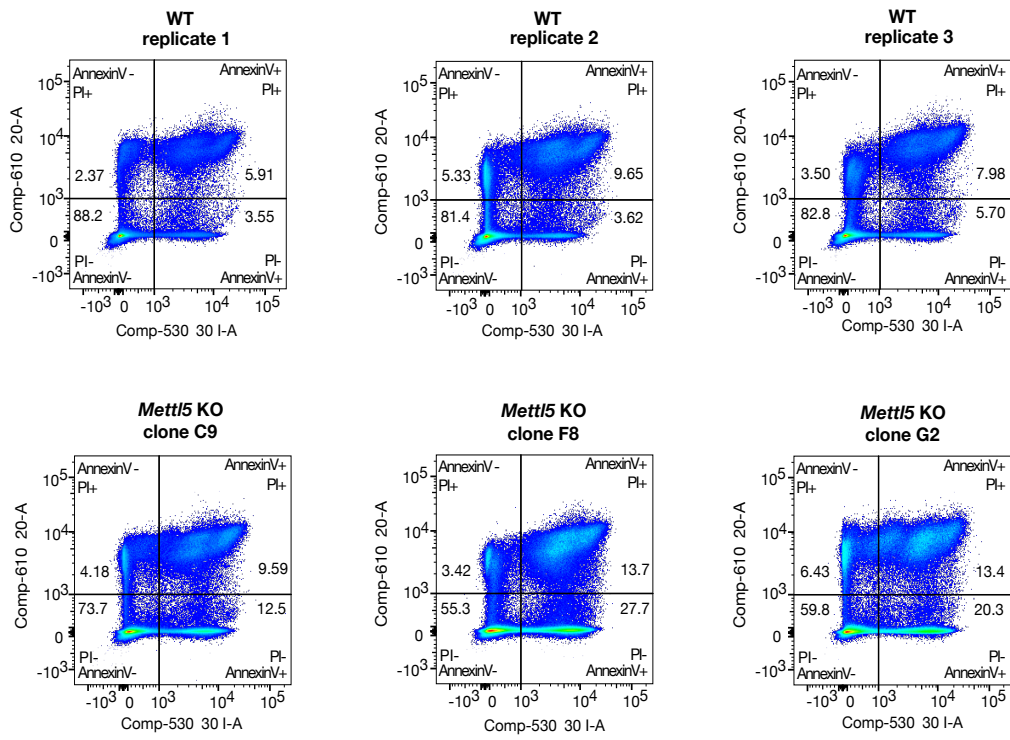


Figure S4

a



b

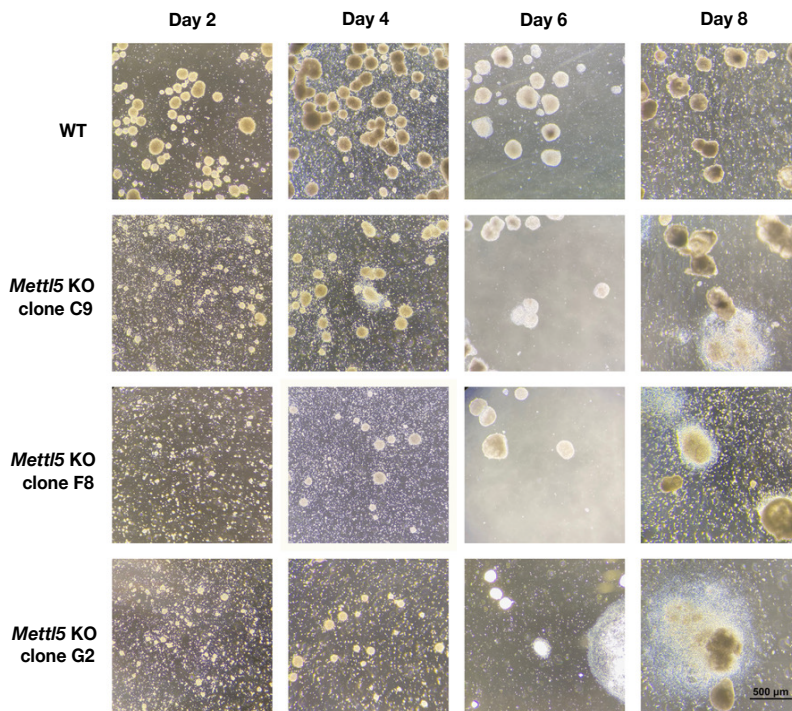


Figure S4. Analysis of apoptotic markers and embryonic body formation in *Mettl5* KO mESCs

a. Results of flow cytometry analysis for apoptotic markers in wt and *Mettl5* KO (clones C9, F8, G2) mESC displayed as fluorescence intensity of Propidium iodide (PI) (610/20) vs FITC labelled AnnexinV (530/30). Flow cytometry data are presented in pseudo-colour plots: blue and green correspond to areas of lower particle density, yellow - mid-range density and red and orange - areas of high particle density. % of parental population are indicated.

b. Representative pictures of wt and *Mettl5* KO (clones C9, F8, G2) mESCs after 2, 4, 6 and 8 days during embryonic body (EB) formation. After 8 days the EBs were collected for RT-qPCR data represented in Figure 3h.