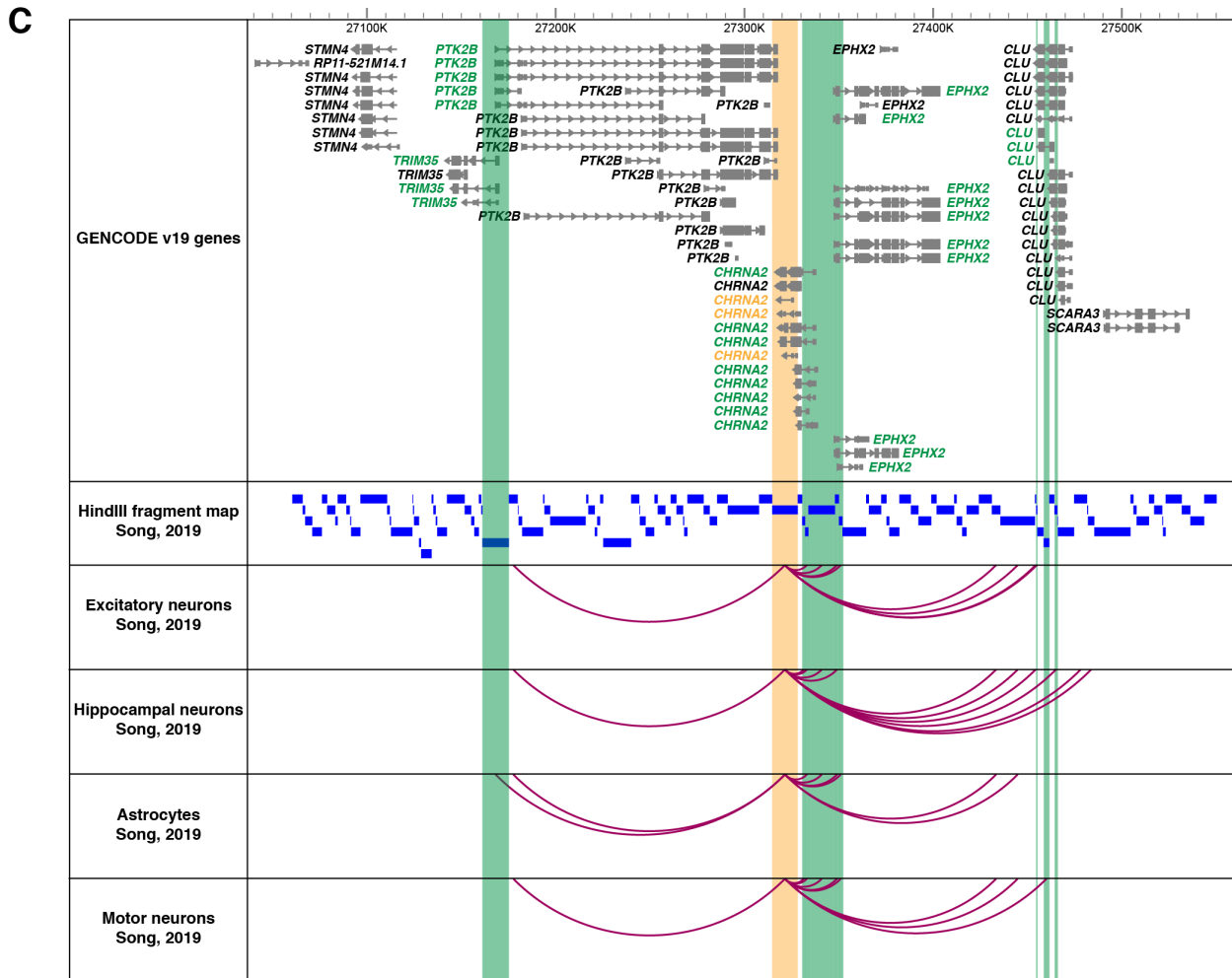
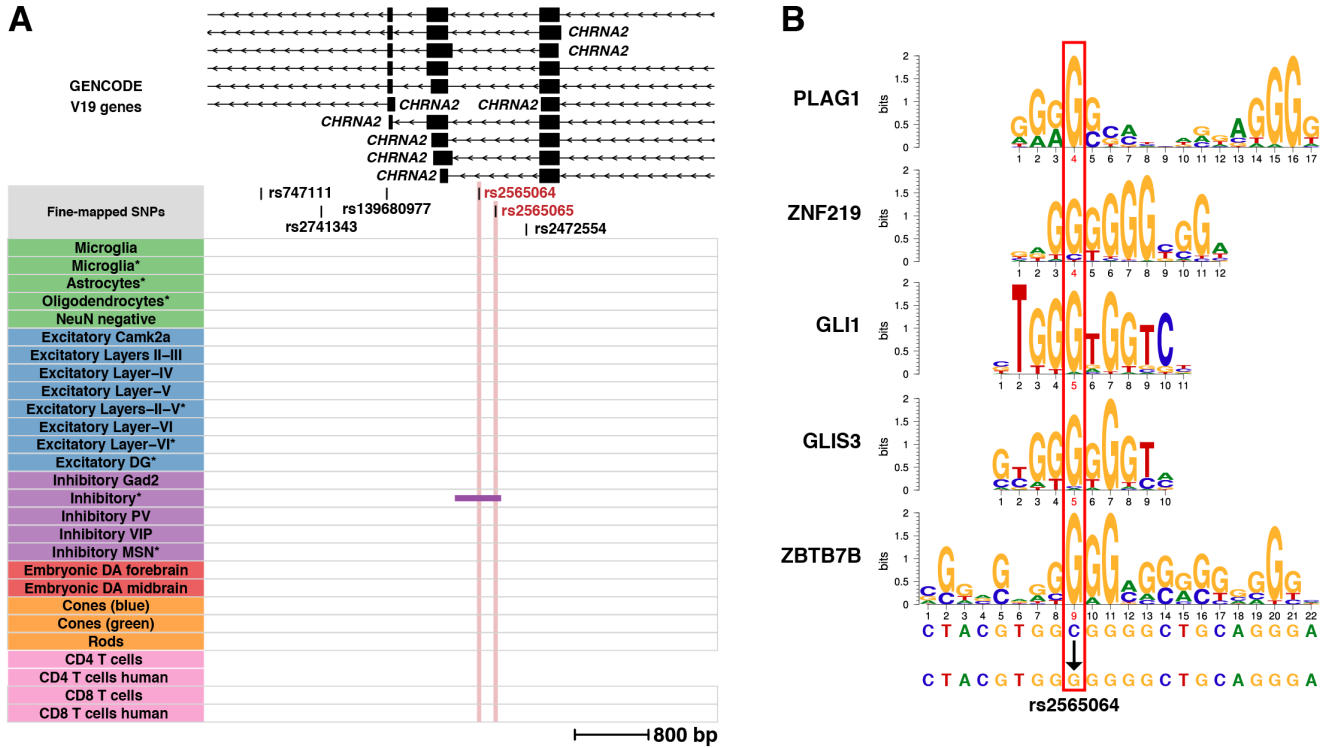


Supplemental Figure S11



Supplemental Figure S11. Fine-mapping prioritizes SNPs in the schizophrenia-associated locus surrounding the *CHRNA2* gene. A) A visualization of two prioritized SNPs (rs2565064 and rs2565065) in the promoter region of *CHRNA2* transcripts (hg19; Chr8:27326894–27328396). The plot displays transcripts, the prioritized SNPs, and the mouse-derived human peaks from all ATAC-seq samples. The prioritized SNPs are highlighted. B) Transcription factor binding motifs derived from HOCOMOCO v10 data that are disrupted by rs2565064. The nucleotides impacted are highlighted in a red box. C) Promoter-capture Hi-C data in the area around the *CHRNA2* gene from Song *et al.*, 2019 (Song *et al.* 2019) (hg19; Chr8:27032000-27568000). Only the significant interactions involving the HindIII fragment containing rs2565064 and rs2565065 are shown. The viewpoint is highlighted in gold and all promoters it interacts with are highlighted in green. All SNP-interaction data can be found in Supplemental Table S14.