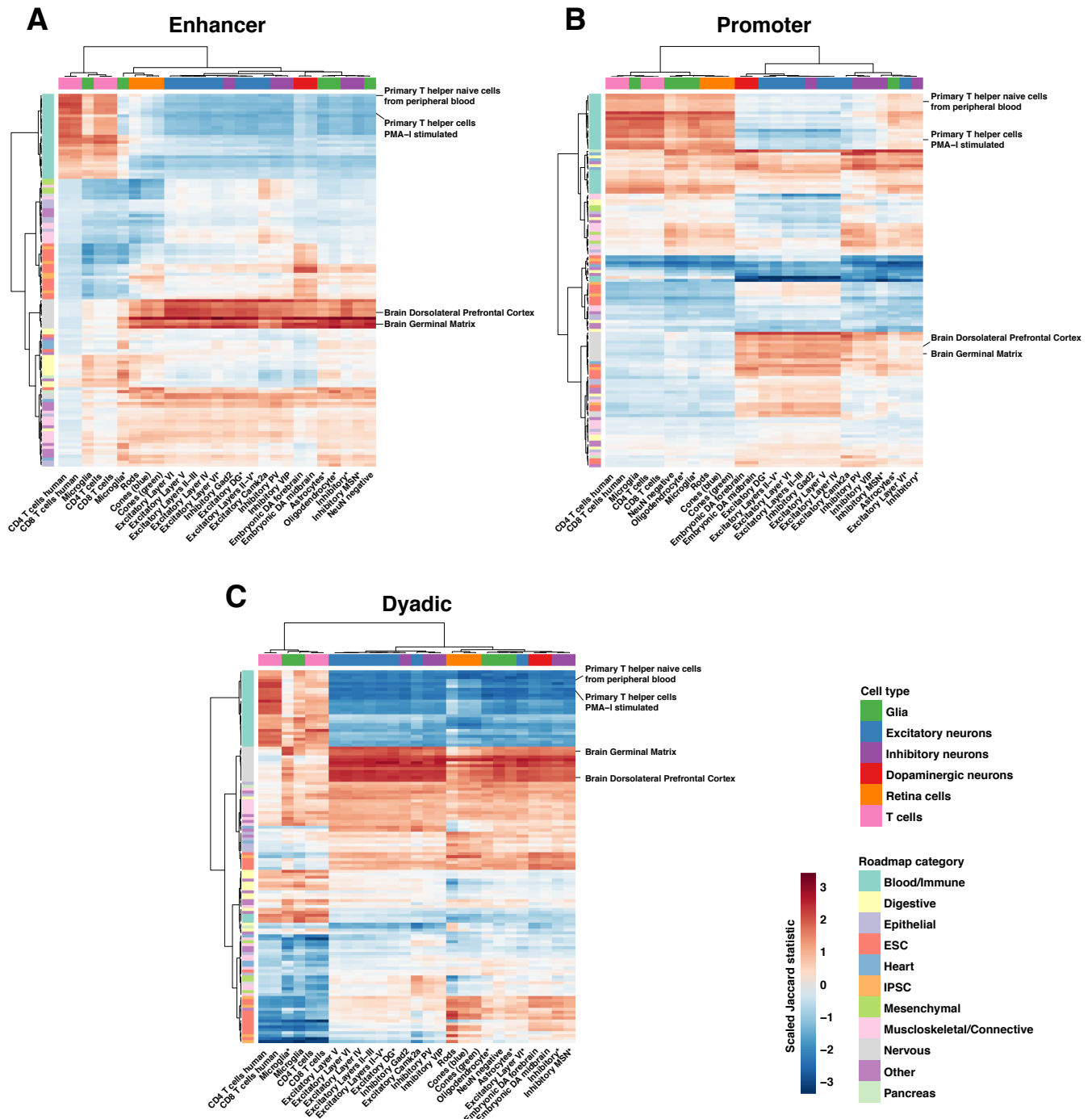


# Supplemental Figure S2



*Supplemental Figure S2.* Pairwise relationships between mouse-derived ATAC-seq human data and imputed Roadmap Epigenomics Project open chromatin data designated as different types of regulatory sequences. Representative Roadmap tissues illustrating groups of immune and brain-derived tissues that are highlighted in the text are displayed and data is hierarchical clustered by ATAC-sample and Roadmap tissue as in Figure 2A. A) A heatmap displaying pairwise Jaccard statistics scaled by column (ATAC-seq sample) using Roadmap data designated as enhancer sequences. B) A heatmap displaying pairwise Jaccard statistics scaled by column (ATAC-seq sample) using Roadmap data designated as promoter sequences. C) A heatmap displaying pairwise Jaccard statistics scaled by column (ATAC-seq sample) using Roadmap data designated as dyadic sequences. Induced pluripotent stem cells (IPSC); embryonic stem cell (ESC).