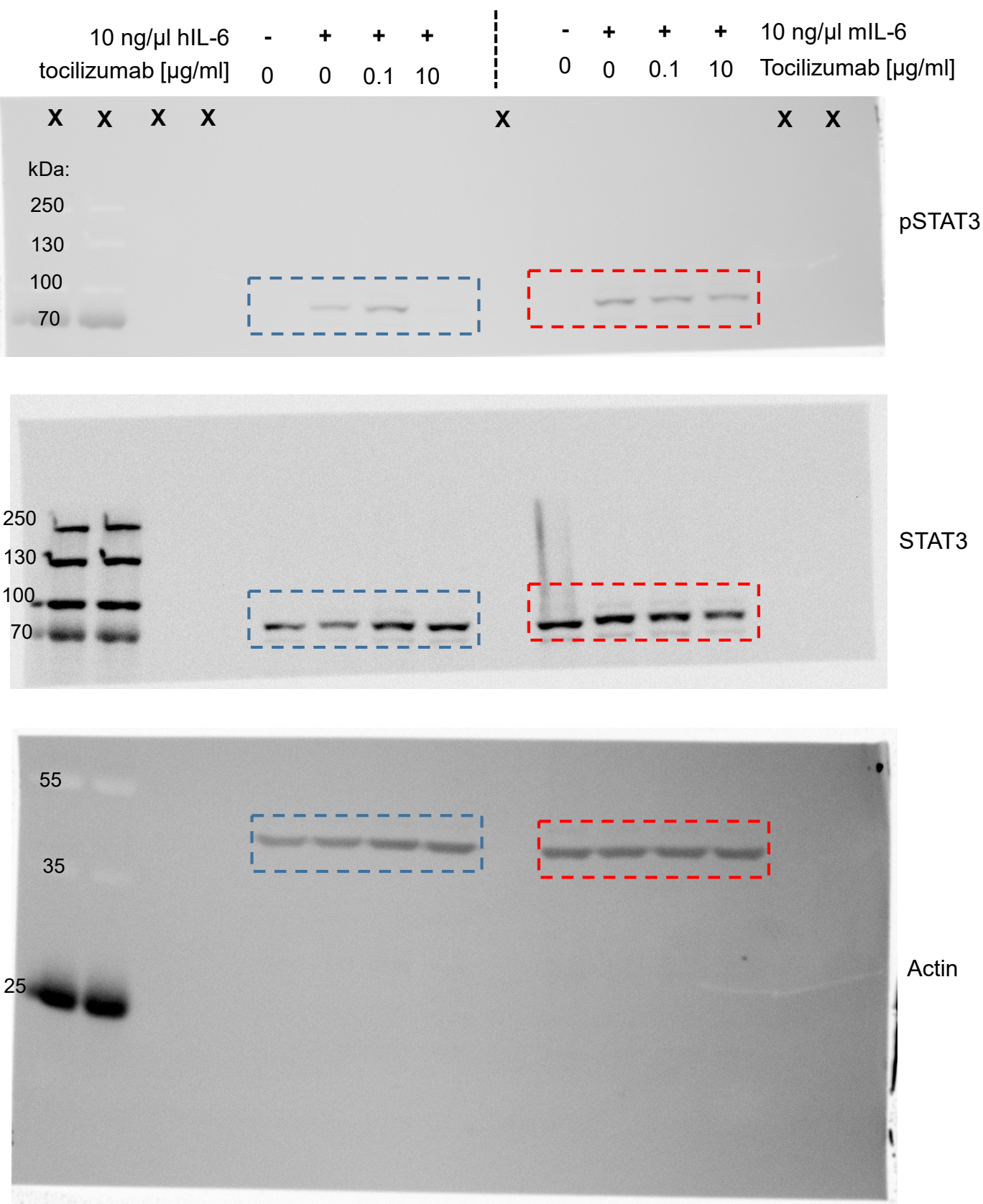


Figure 2 D/E

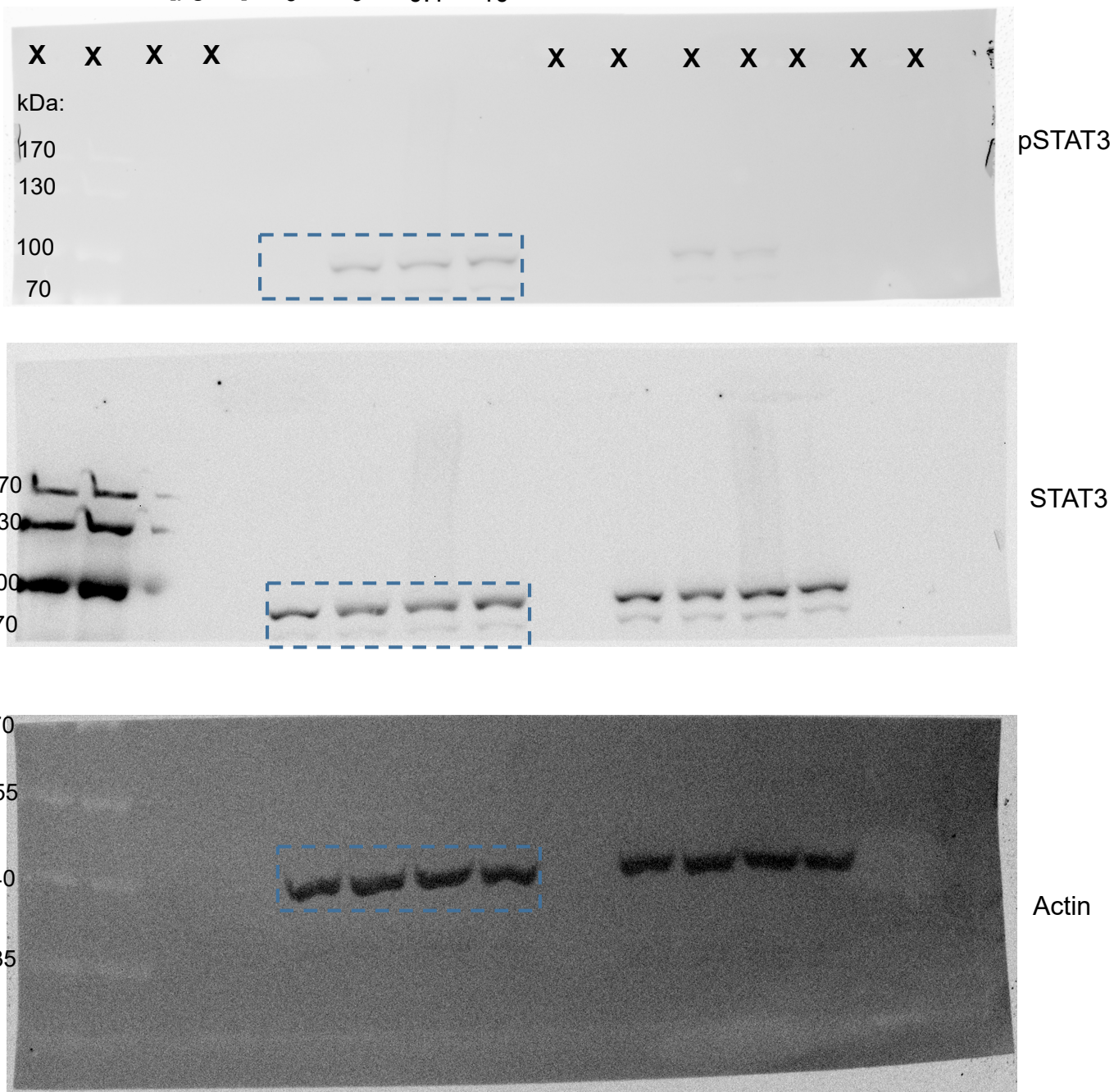


Detected with Alexa Fluor488- and Alexa Fluor647-conjugated antibodies using a ChemoStar ECL Imager (Intas)

Lanes not included in the figures are marked with an X

Figure 3C

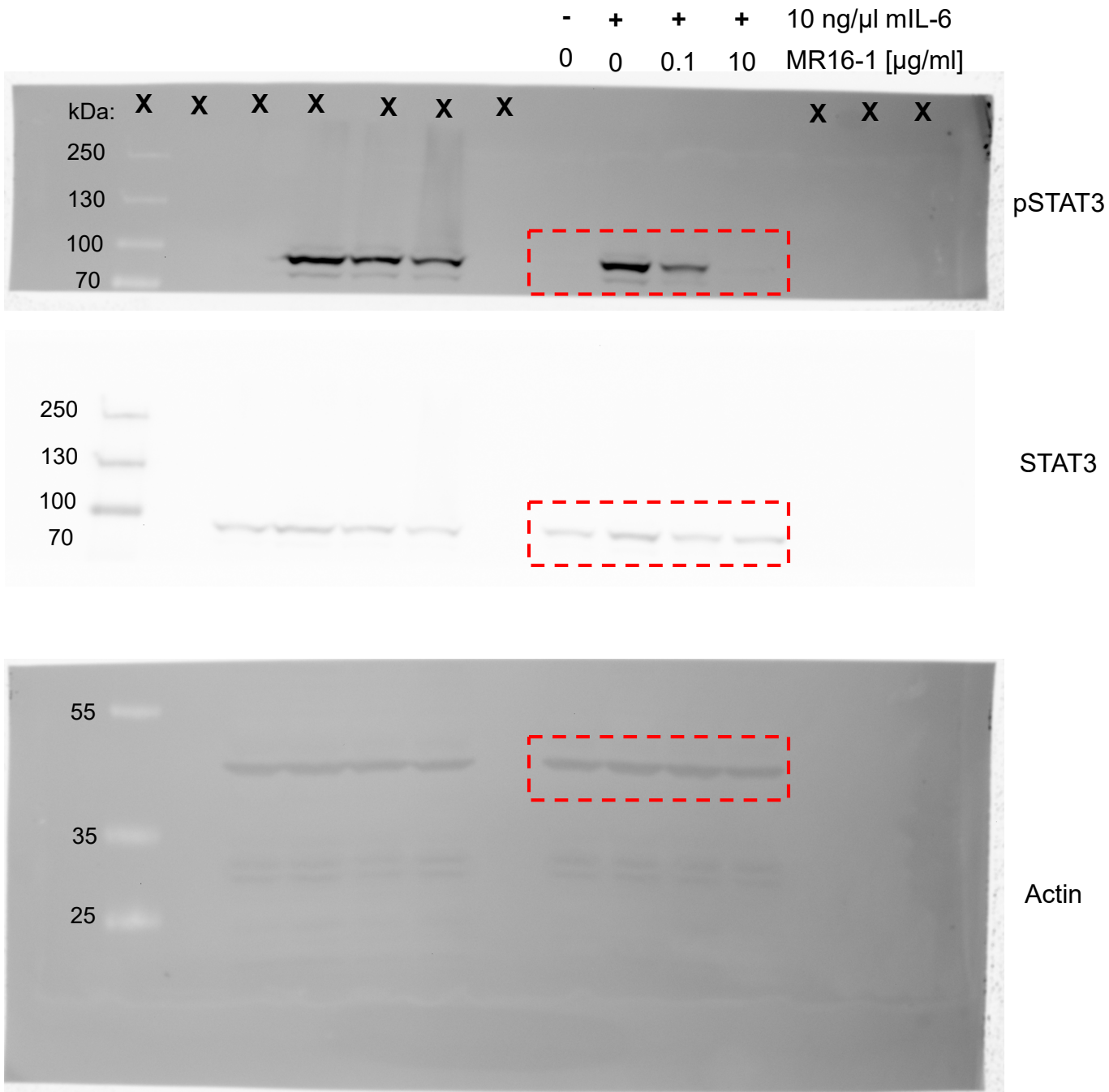
10 ng/ μ l hIL-6	-	+	+	+
MR16-1 [μ g/ml]	0	0	0.1	10



Detected with Alexa Fluor488- and Alexa Fluor647-conjugated antibodies using a ChemoStar ECL Imager (Intas)

Lanes not included in the figures are marked with an X

Figure 3D

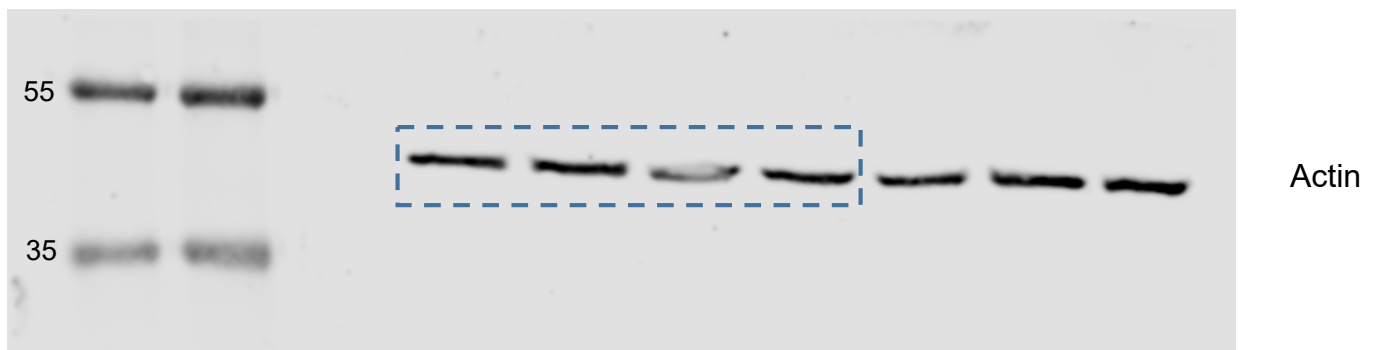
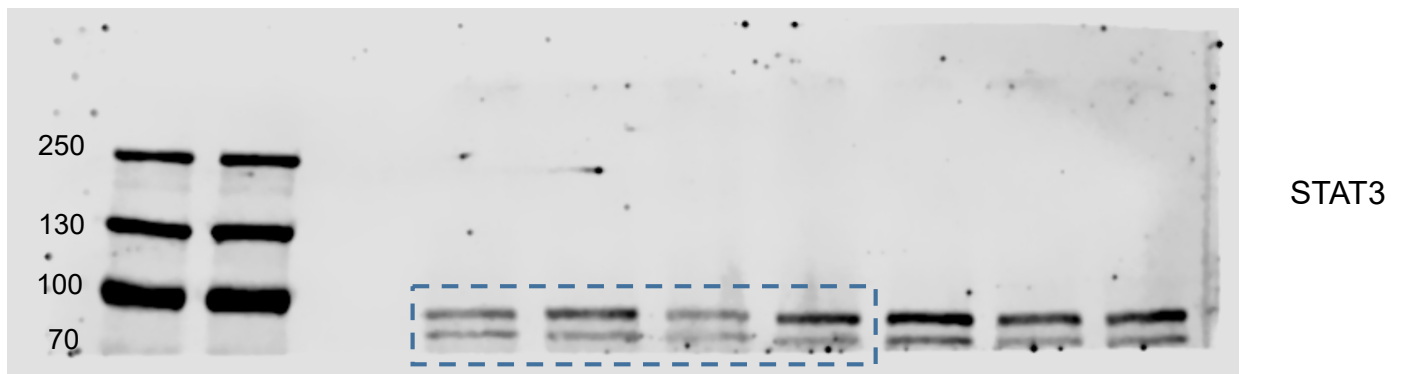
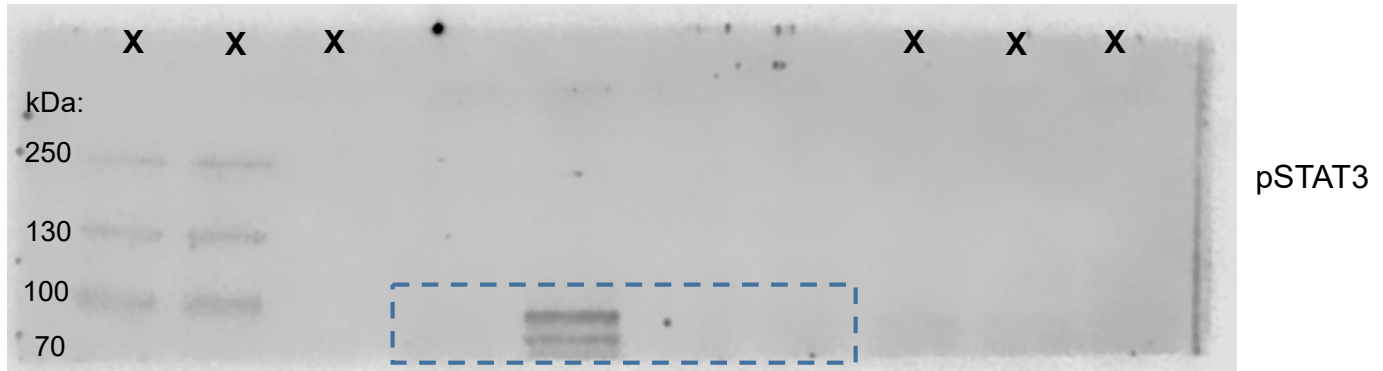


Detected with Alexa Fluor488- and Alexa Fluor647-conjugated antibodies using a ChemoStar ECL Imager (Intas)

Lanes not included in the figures are marked with an X

Figure 4A

10 ng/ μ l hIL-6	-	+	+	+
tocilizumab [μ g/ml]	0	0	0.1	10

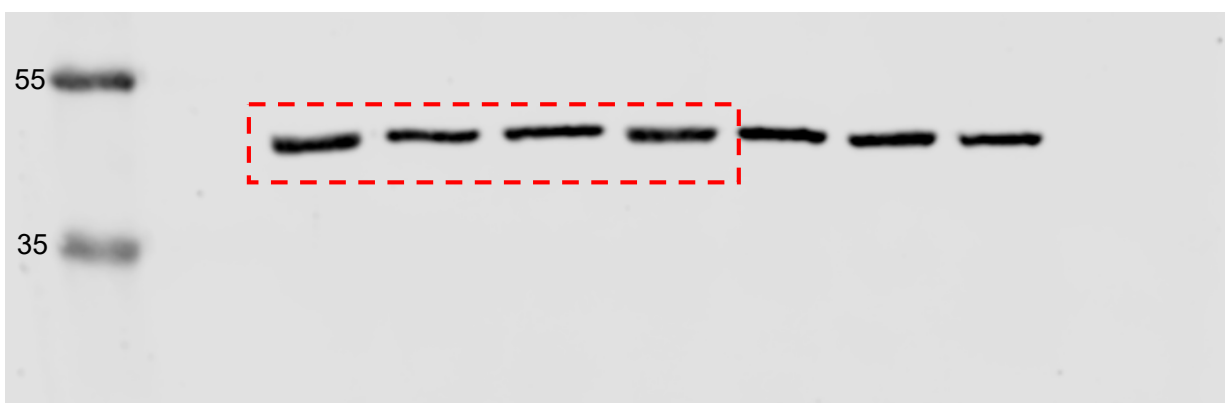
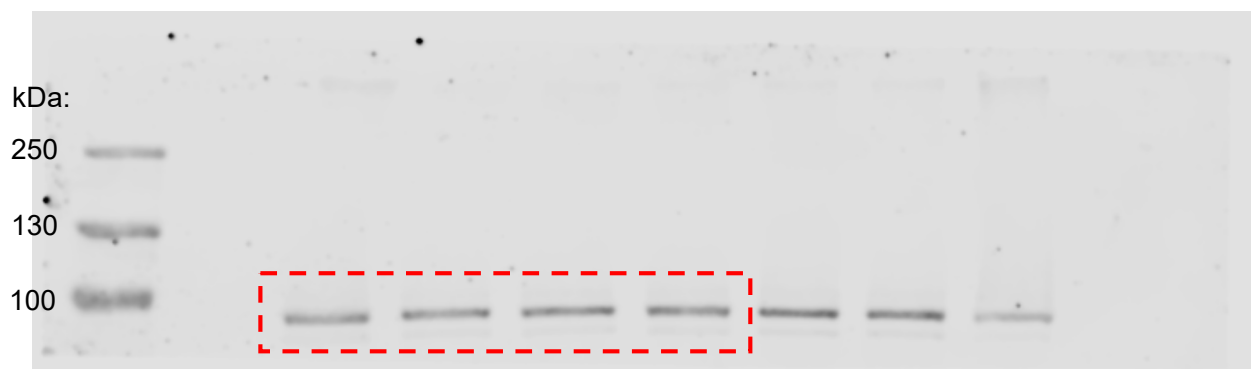
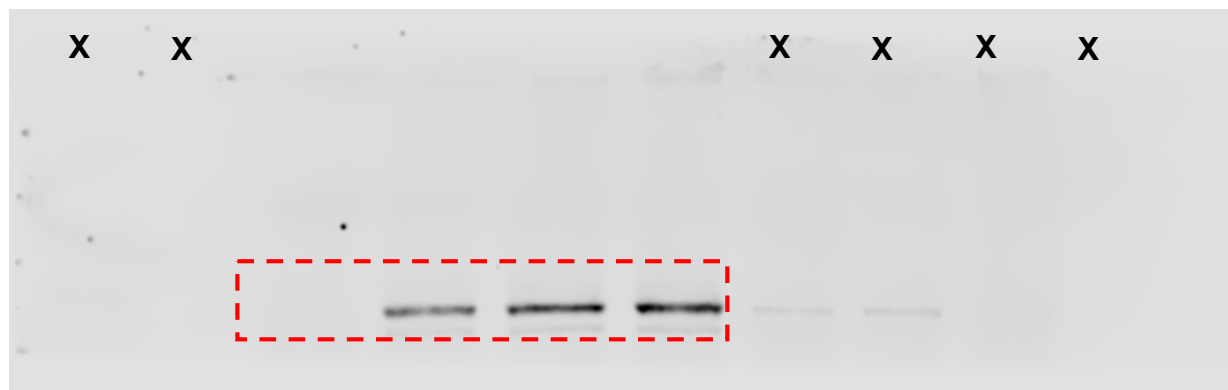


Detected with IRDye 680RD- and IRDye 800CW-conjugated antibodies using a Odyssey Fc Imager (LI-COR)

Lanes not included in the figures are marked with an X

Figure 4B

10 ng/ μ l mL-6	-	+	+	+
tocilizumab [μ g/ml]	0	0	0.1	10

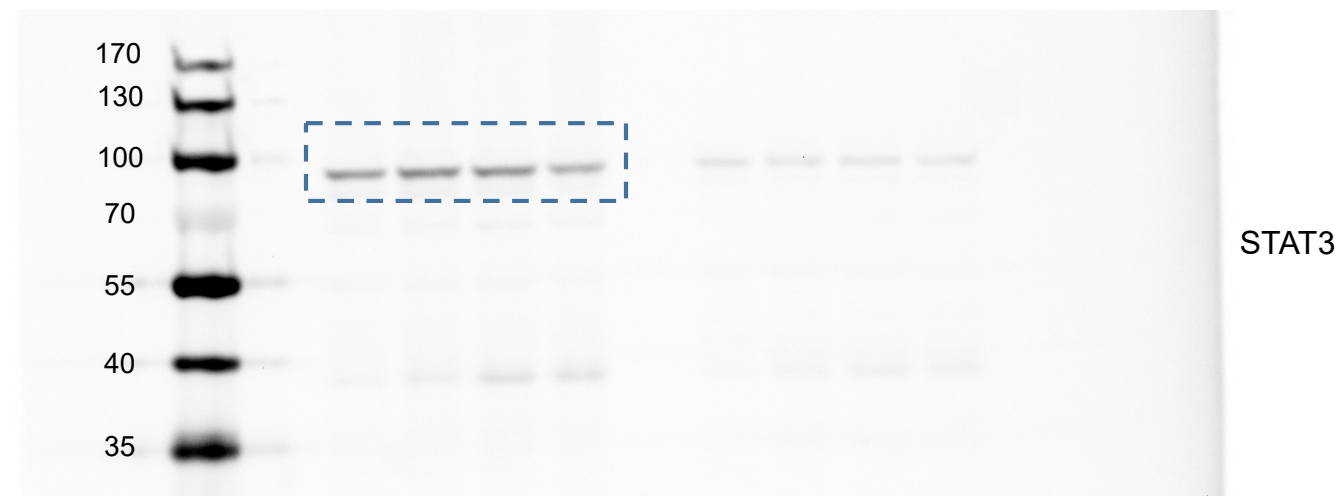
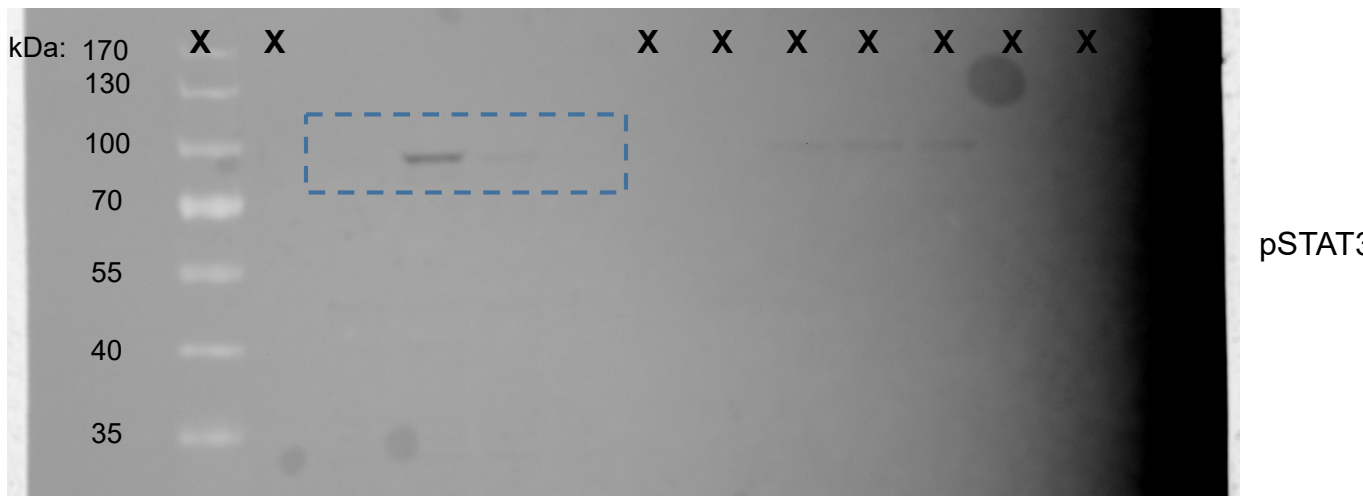


Detected with IRDye 680RD- and IRDye 800CW-conjugated antibodies using a Odyssey Fc Imager (LI-COR)

Lanes not included in the figures are marked with an X

Figure 4C

- + + + 10 ng/μl hIL-6
0 0 0.1 10 tocilizumab [μg/ml]

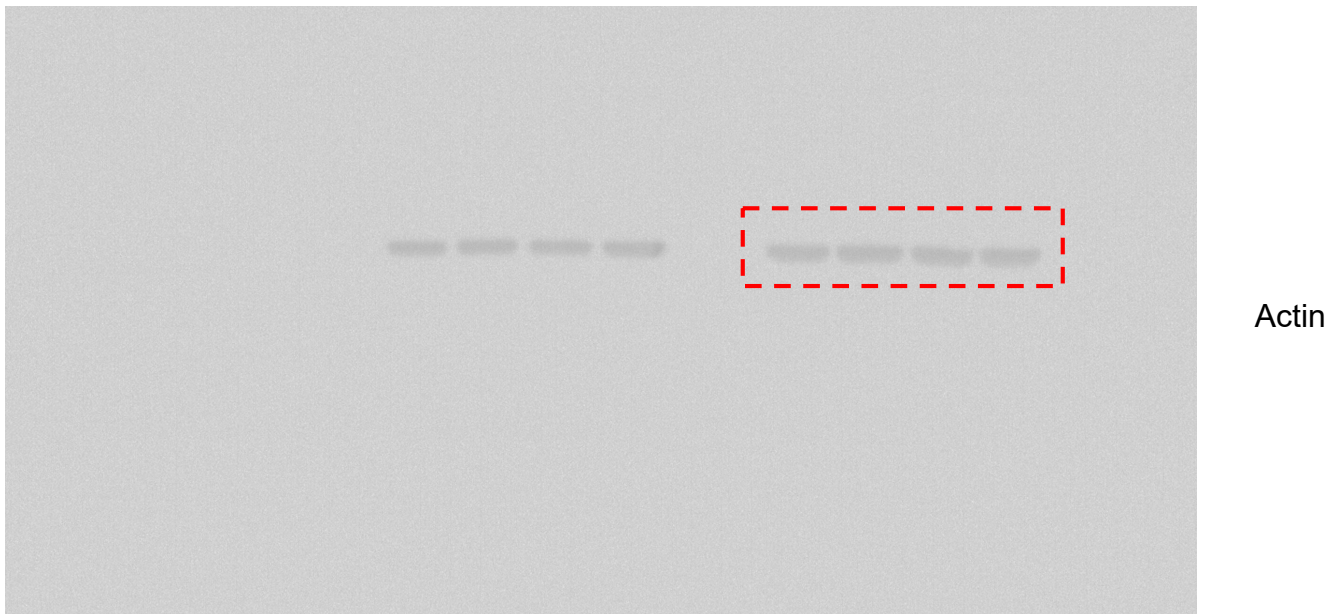
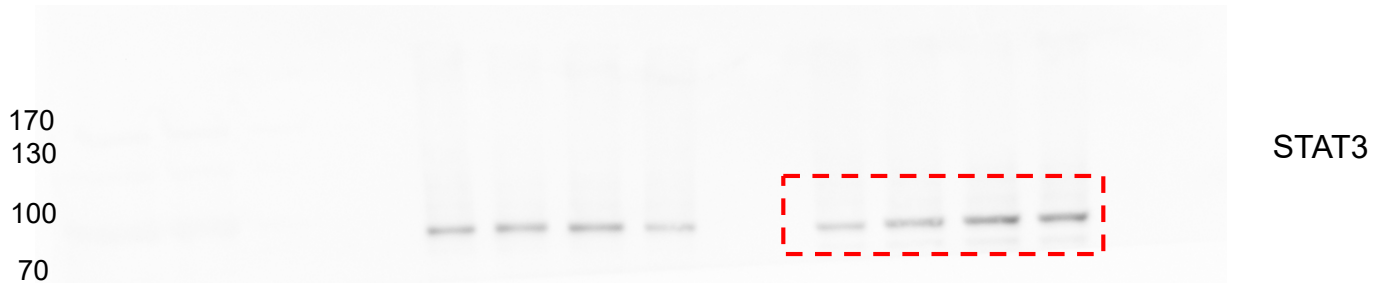
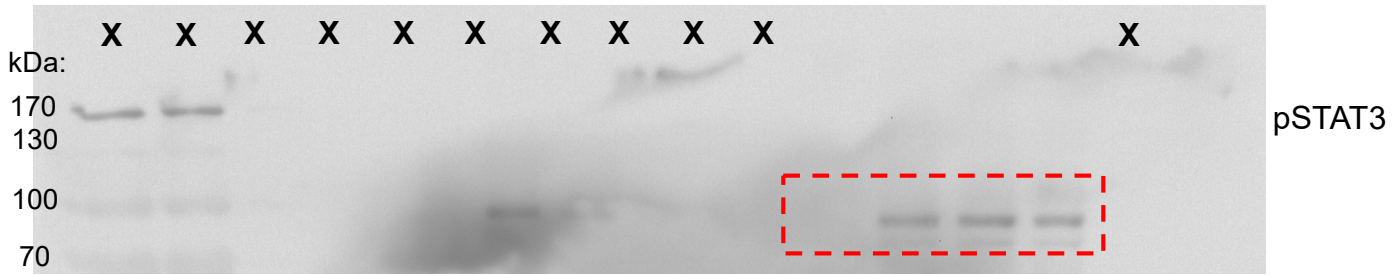


Detected with Alexa Fluor488- and Alexa Fluor647-conjugated antibodies using a ChemoStar ECL Imager (Intas)

Lanes not included in the figures are marked with an X

Figure 4D

10 ng/ μ l mL-6 - + + +
tocilizumab [μ g/ml] 0 0 0.1 10



Detected with Alexa Fluor488- and Alexa Fluor647-conjugated antibodies using a ChemoStar ECL Imager (Intas)

Lanes not included in the figures are marked with an X