

Supplementary Material to “Bringing to light the molecular evolution of *GUX* genes in plants”

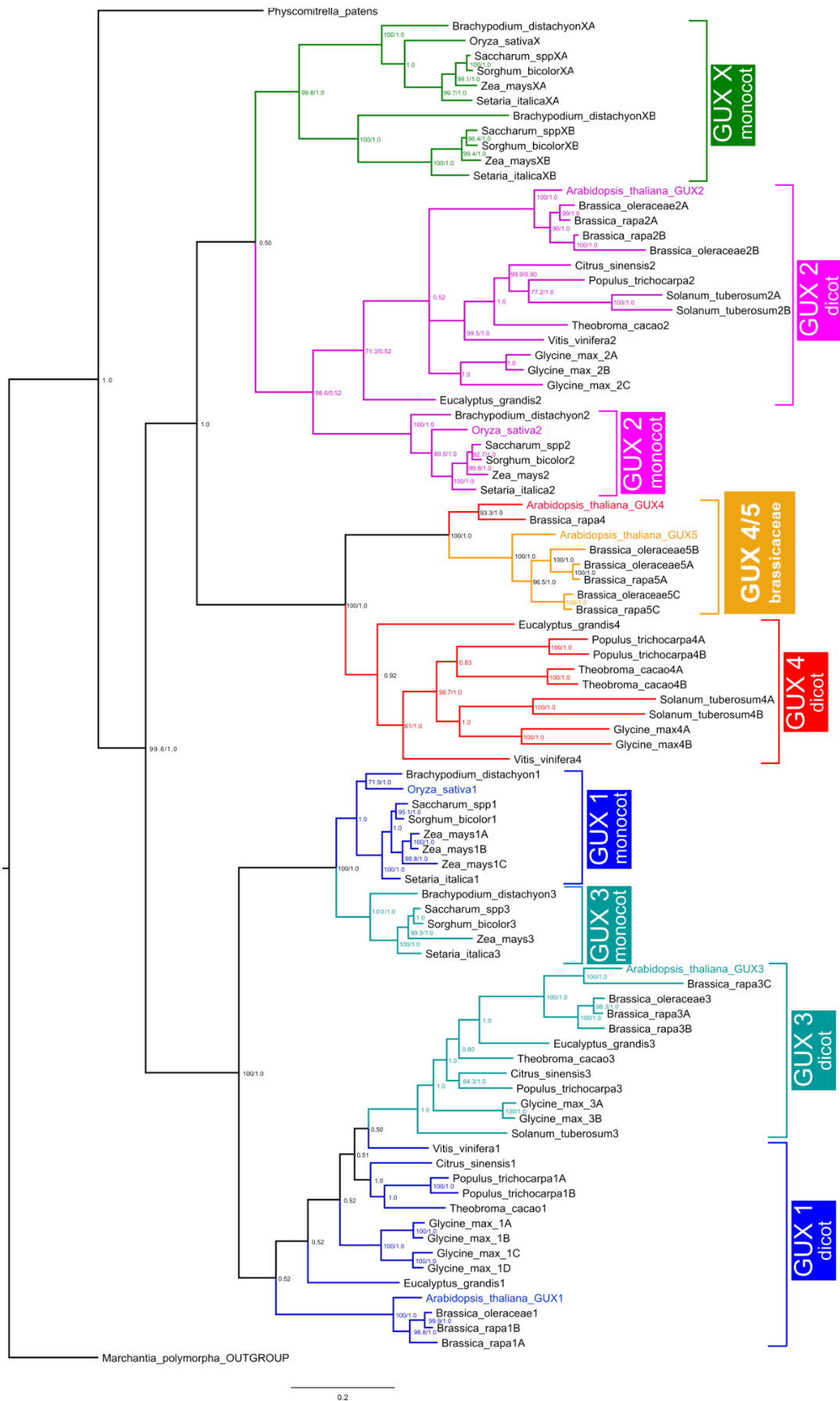


Figure S4 - Phylogenetic tree of *GUX* coding sequences in plants. Numbers on nodes correspond to the maximum likelihood (ML) ultrafast bootstrap support values followed by Bayesian posterior probabilities. The colored branches are represented by: GUX1 (dark blue), GUX2 (pink), GUX3 (light blue), GUX4 (red), GUX4/5 (yellow) and GUX 'X' (green). The *GUX* sequence from *Marchantia polymorpha* was used as the outgroup.