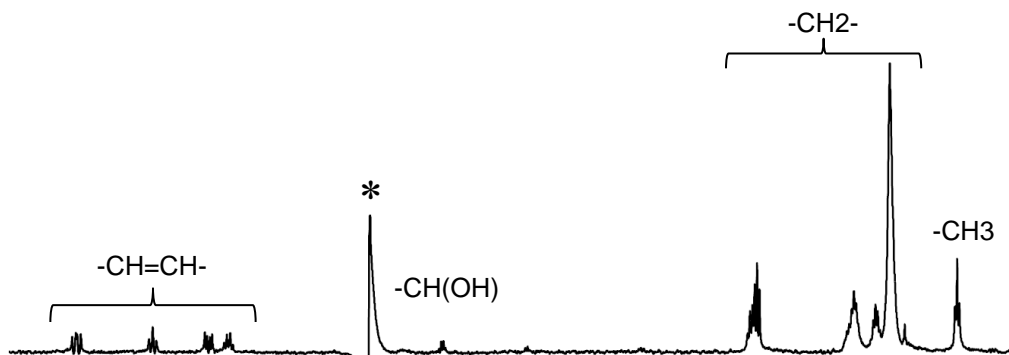
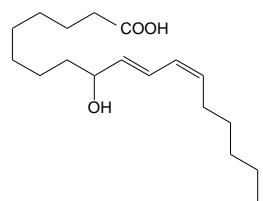
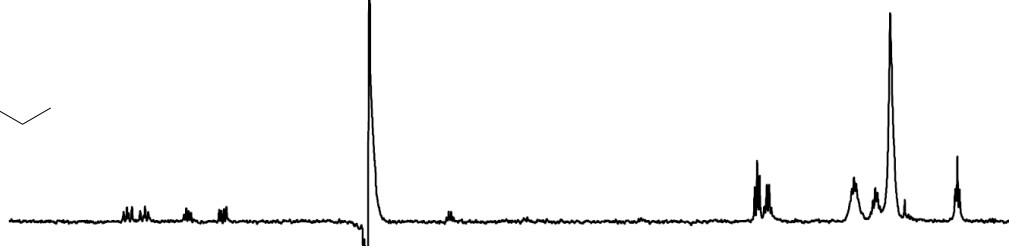
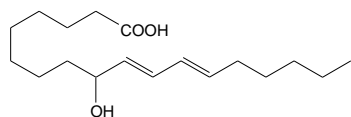


# Supplementary figure 1

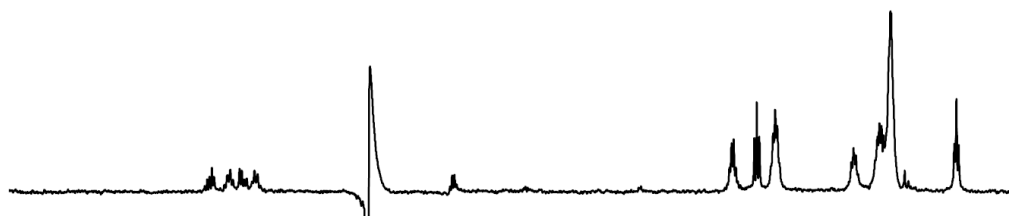
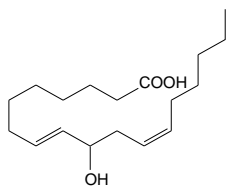
## 9-(*Z,E*)-HODE



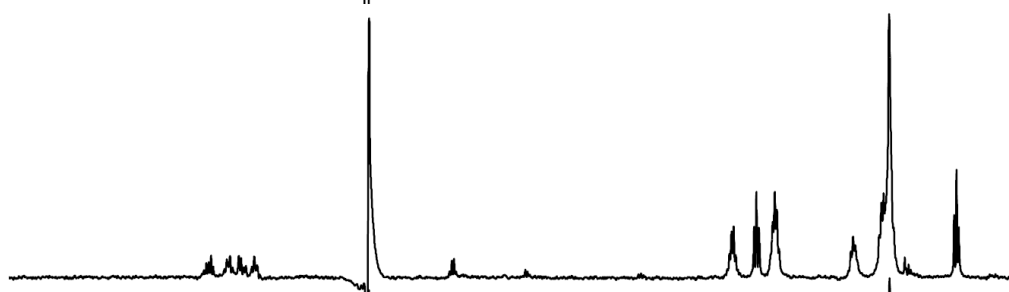
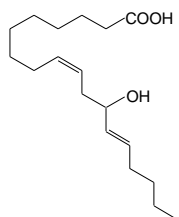
## 9-(*E,E*)-HODE



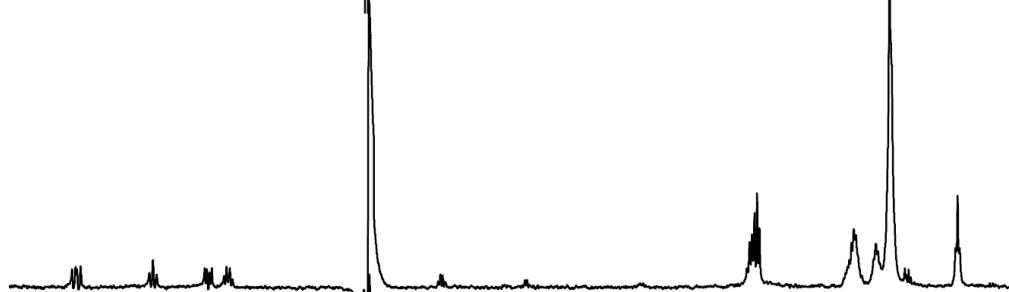
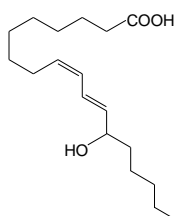
## 10-(*Z,E*)-HODE



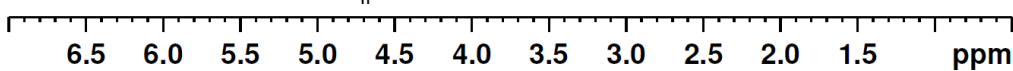
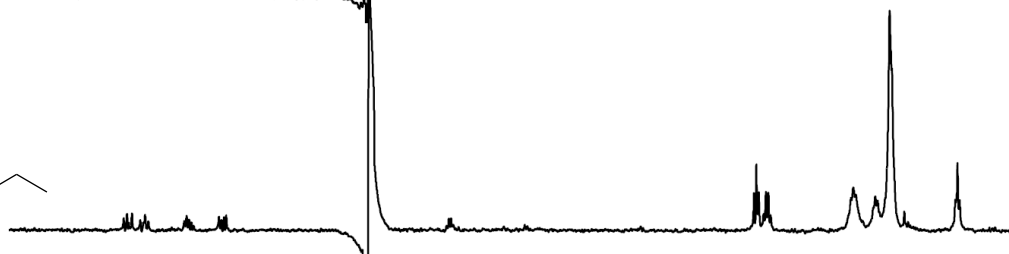
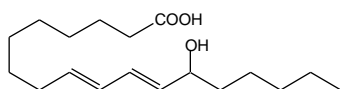
## 12-(*Z,E*)-HODE



## 13-(*Z,E*)-HODE



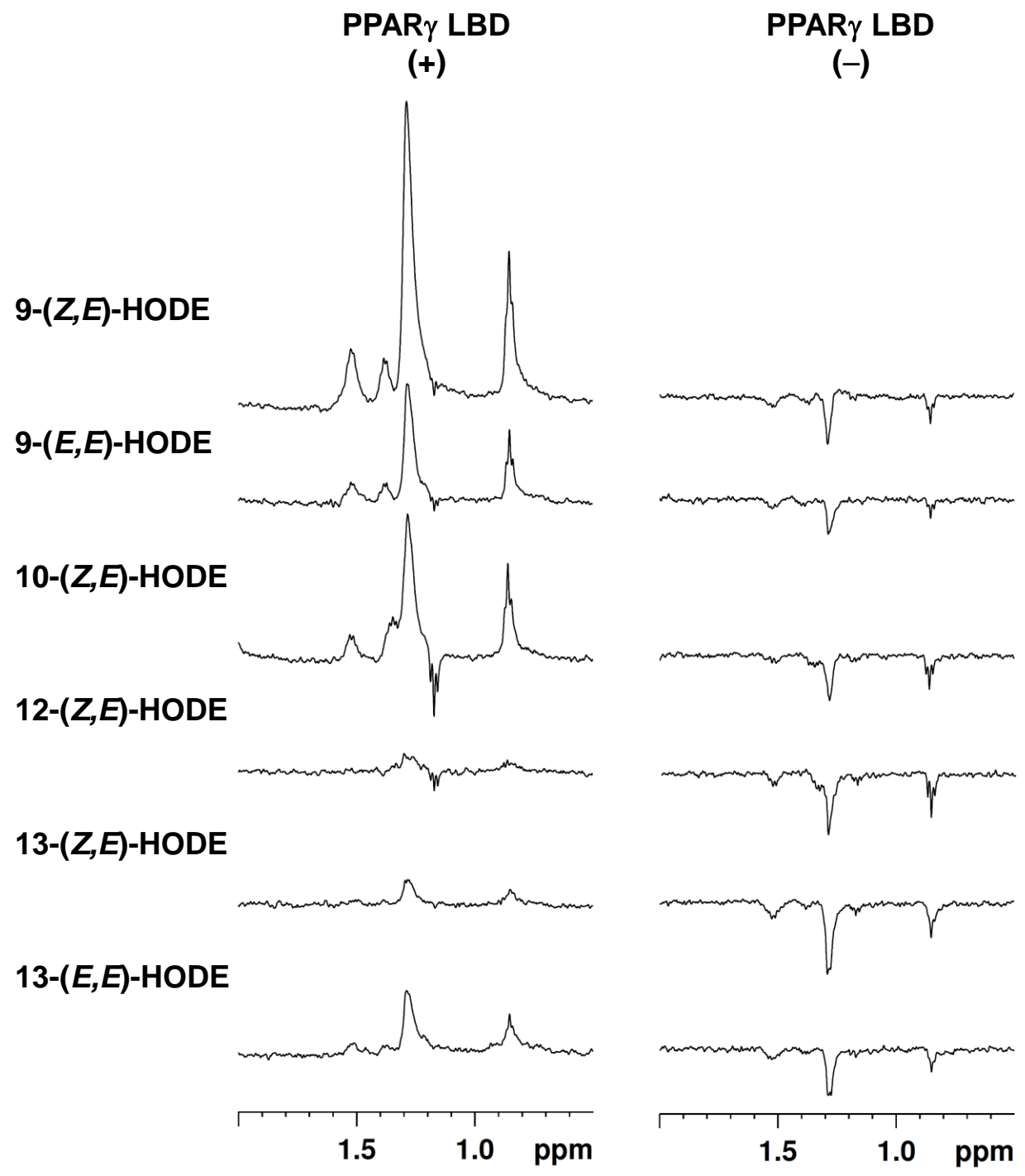
## 13-(*E,E*)-HODE



Supplementary Figure 1.  $^1\text{H}$ -NMR spectra recorded for the HODE isomers. The temporary assignments are indicated above the signals. An asterisk indicates the position of the water signal.

# Supplementary figure 2

## WaterLOGSY NMR



Supplementary Figure 2. WaterLOGSY experiments of the HODE isomers in the presence (left) and absence (right) of PPAR $\gamma$ LBD.