

## Supplementary Figures

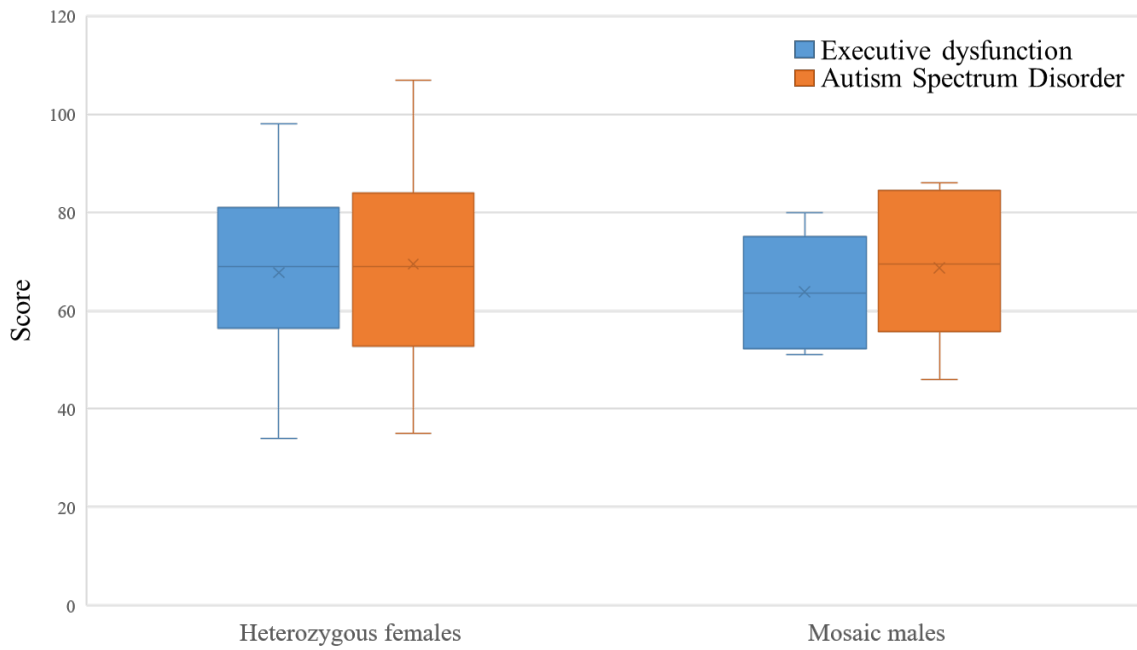


Figure 1. Boxplots illustrating average total BRIEF  $t$  scores (blue) for females ( $n = 89$ ) and males ( $n = 8$ ) and average total SRS-2  $t$  scores (orange) for females ( $n = 82$ ) and males ( $n = 8$ ).

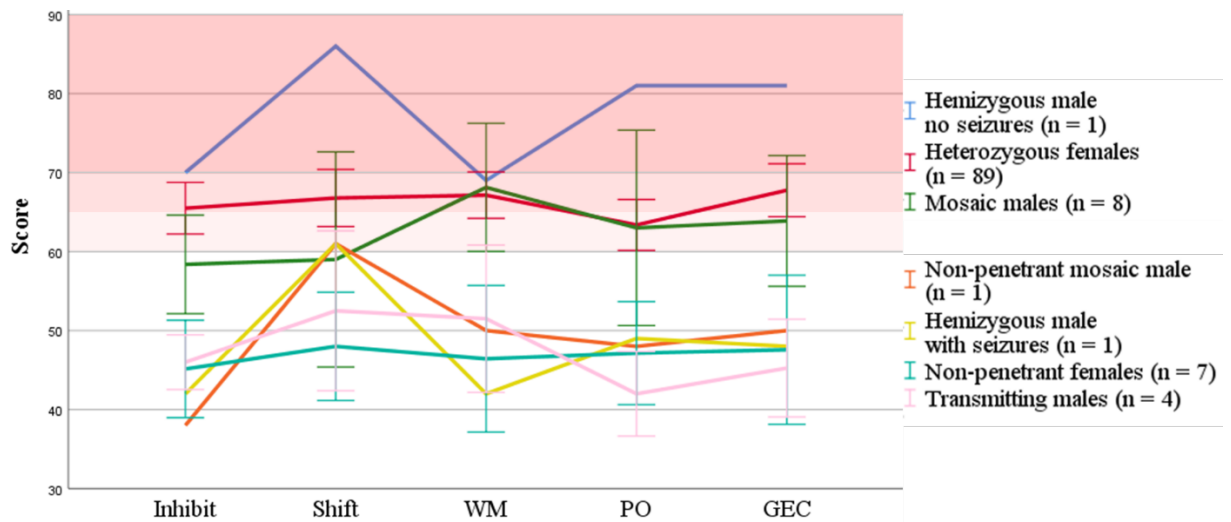


Figure 2. Average ( $\pm 2$  SEM) BRIEF total (GEC) and subscale  $t$  scores. Darkening shades of red correspond to increasing degrees of severity. *WM* working memory, *PO* plan/organize, *GEC* global executive composite.

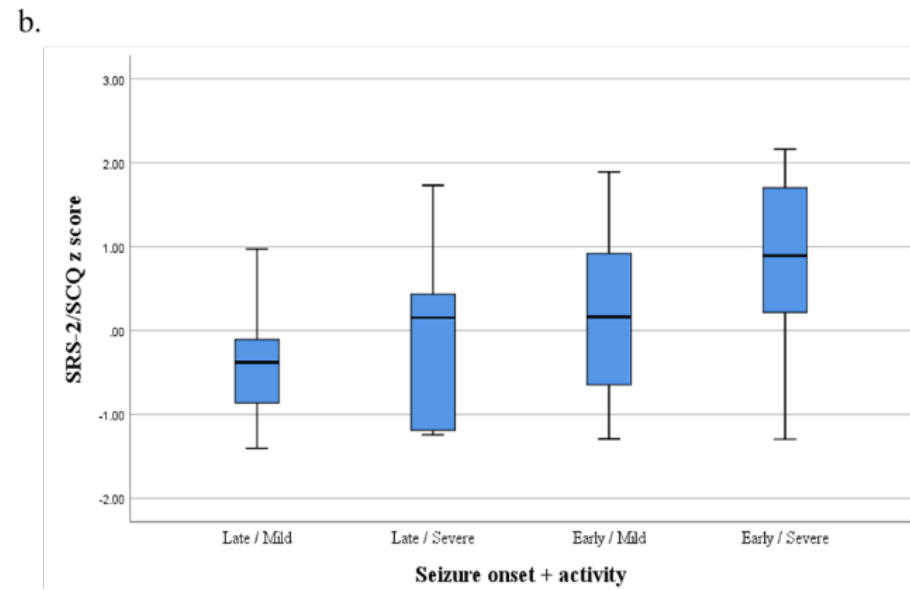
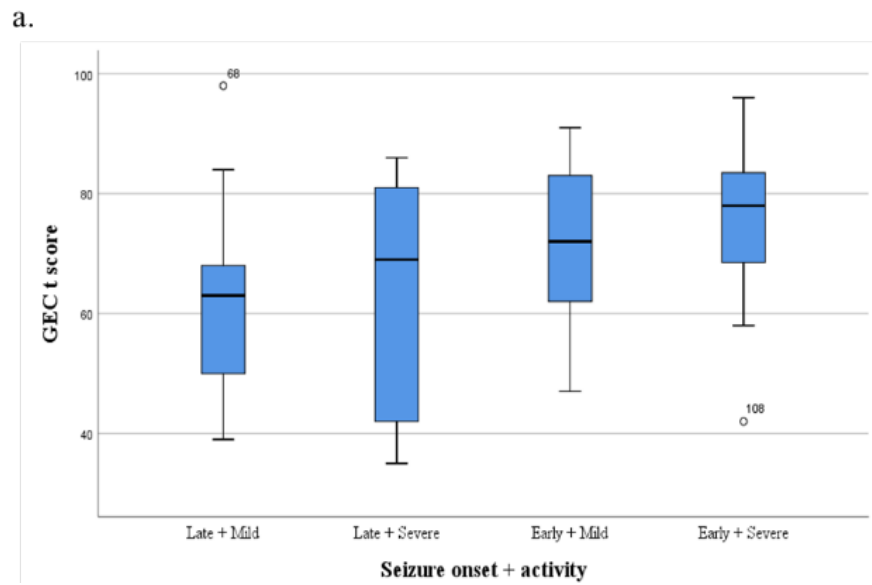


Figure 3. Association between seizure onset, seizure activity and clinical outcome: a) executive dysfunction measured by the BRIEF and b) ASD outcome measured by the SRS-2 or SCQ (scores converted to z scores for the analysis). *Early* =  $\leq 12$  months age at onset, *Late* =  $> 12$  months seizure onset, *Mild* =  $\leq 15$  average seizures/day, *Severe* =  $> 15$  average seizures/day.