

Fig. S1

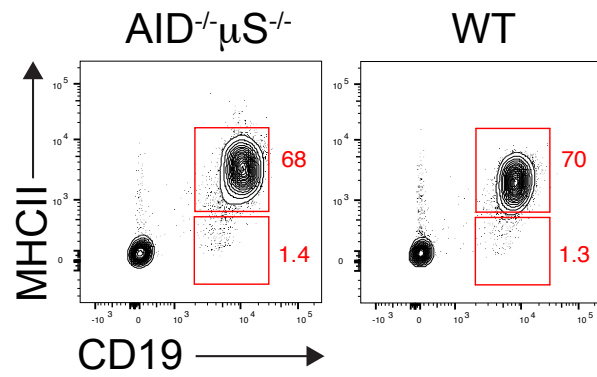


Fig. S1. Flow cytometry plots showing expression of MHCII on CD19⁺ B cell in B6 (WT) and $AID^{-/-} \times \mu S^{-/-}$ mice peripheral blood. Data shown are representative results from a single experiment with 3 mice per group.

Fig. S2

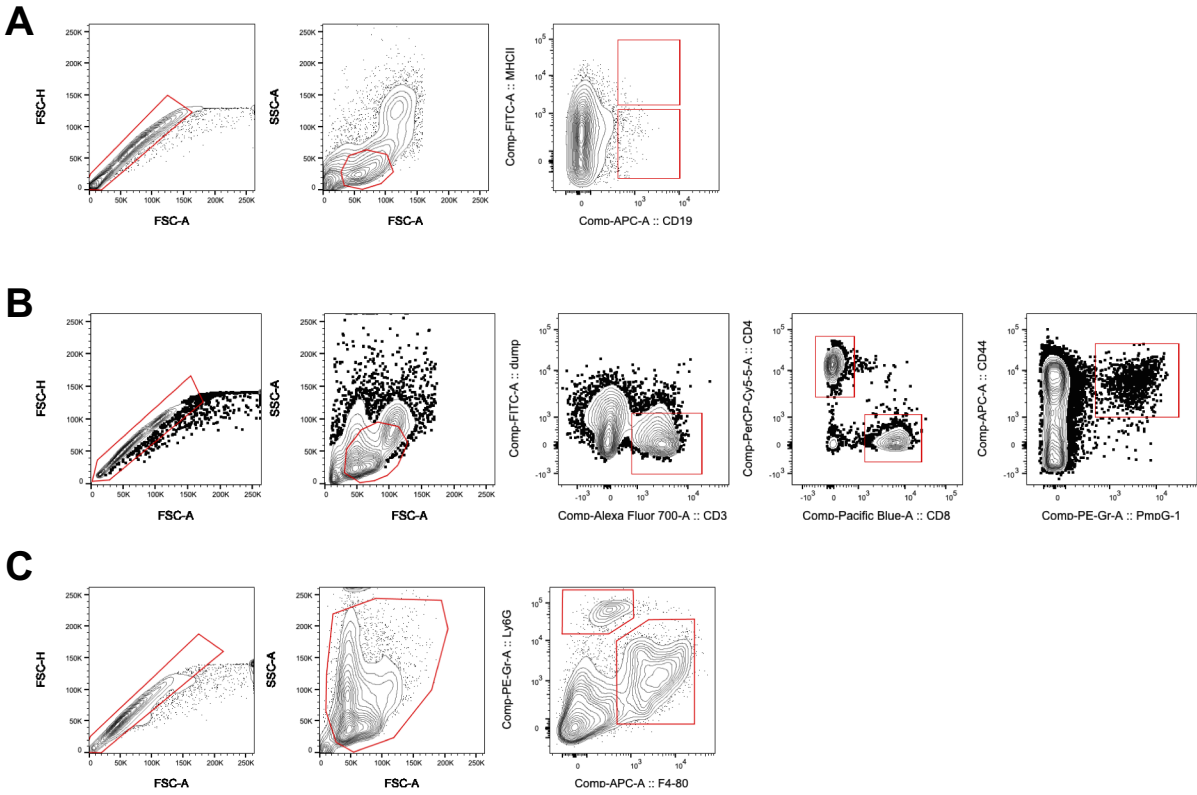


Fig. S2. Flow cytometry plots showing gating strategies for Fig. 1C (A), Fig. 3C (B) and Fig. 4C (C).