

Figure S1. Tanglegram of SNP1 and SNP2 partitions using complete linkage. The outbreak clusters 1 and 2 are shown in red and blue, respectively.

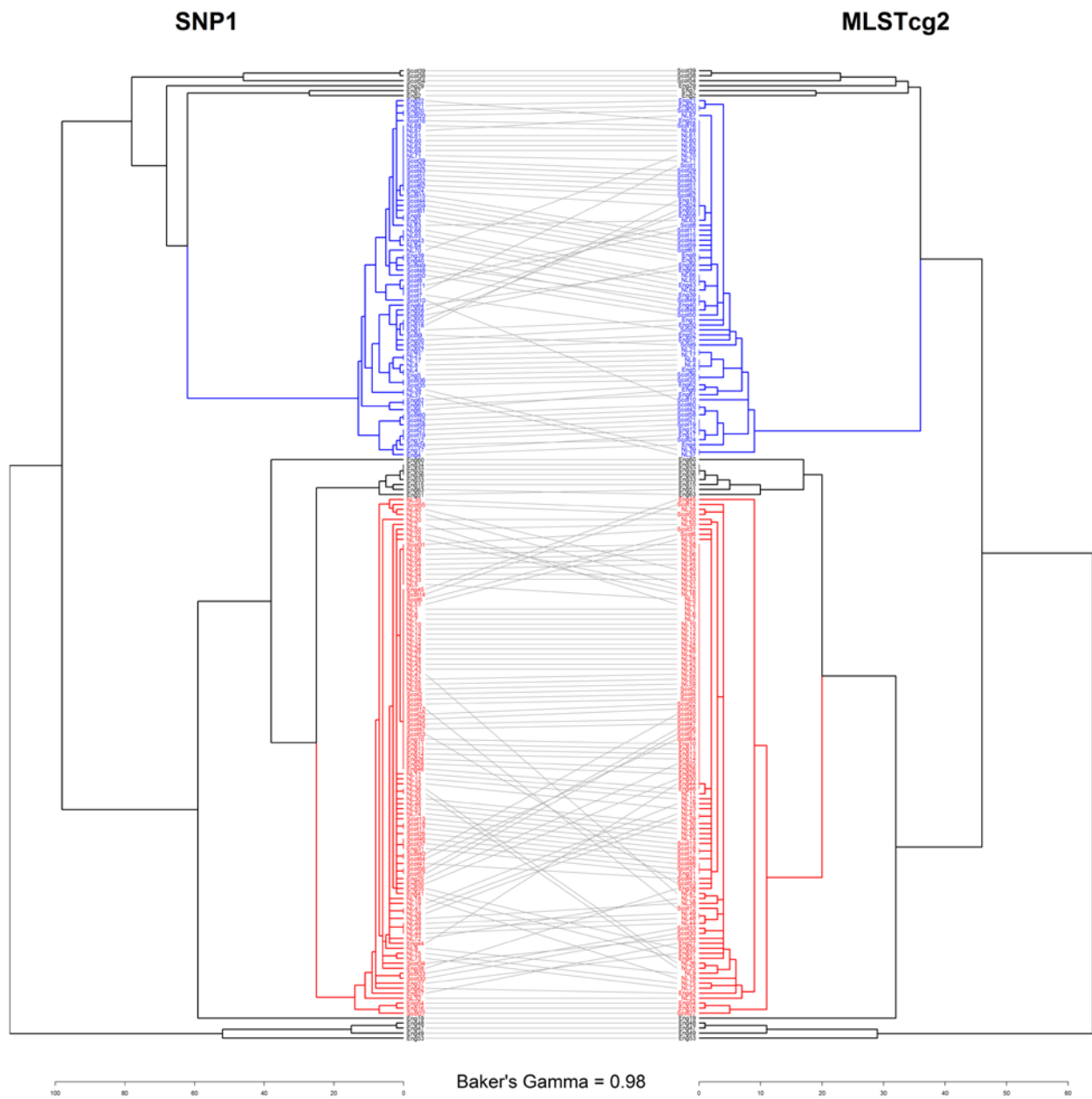


Figure S2. Tanglegram of SNP1 and MLSTcg2 partitions using complete linkage. The outbreak clusters 1 and 2 are shown in red and blue, respectively.

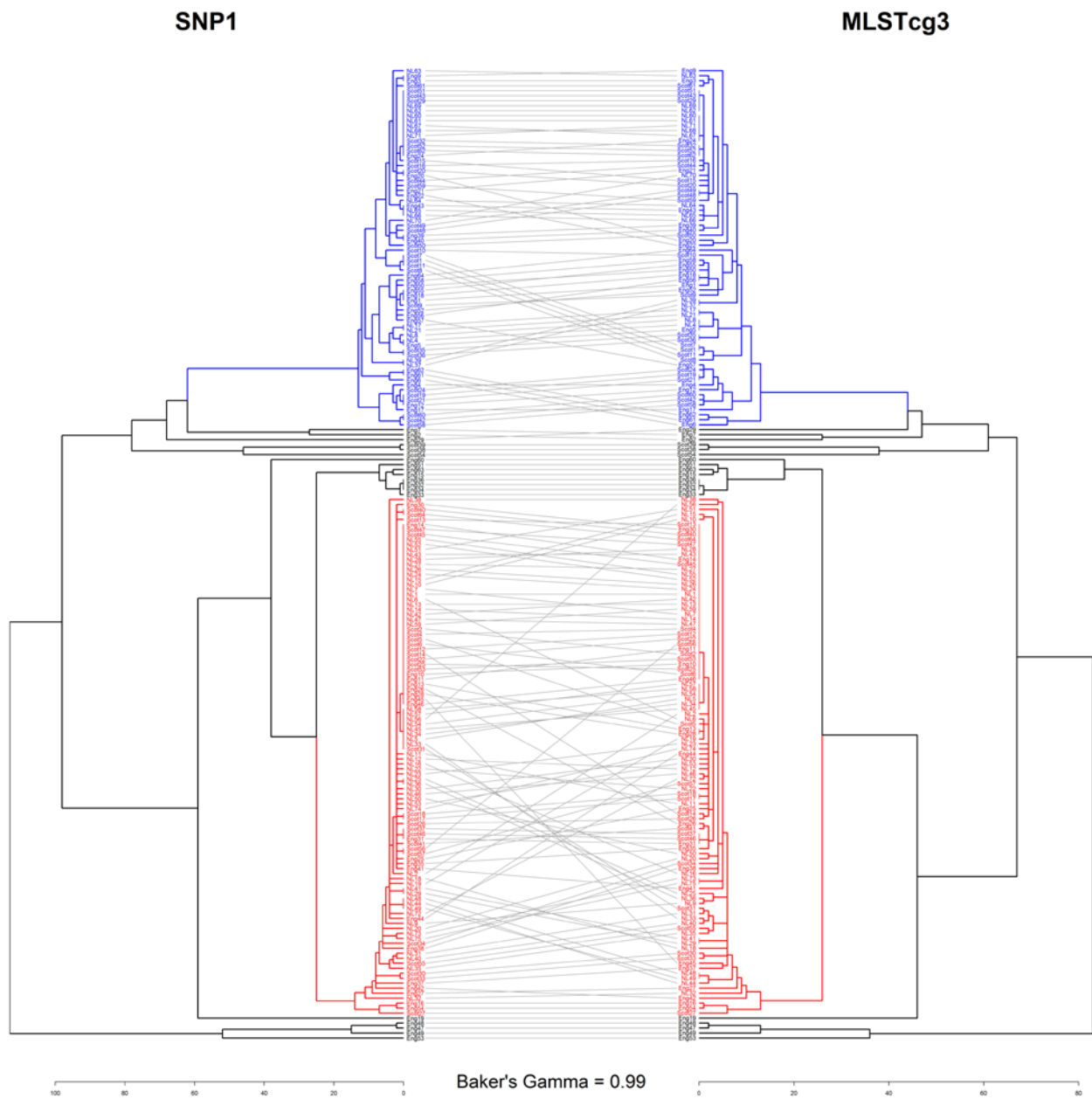


Figure S3. Tanglegram of SNP1 and MLSTcg3 partitions using complete linkage. The outbreak clusters 1 and 2 are shown in red and blue, respectively.

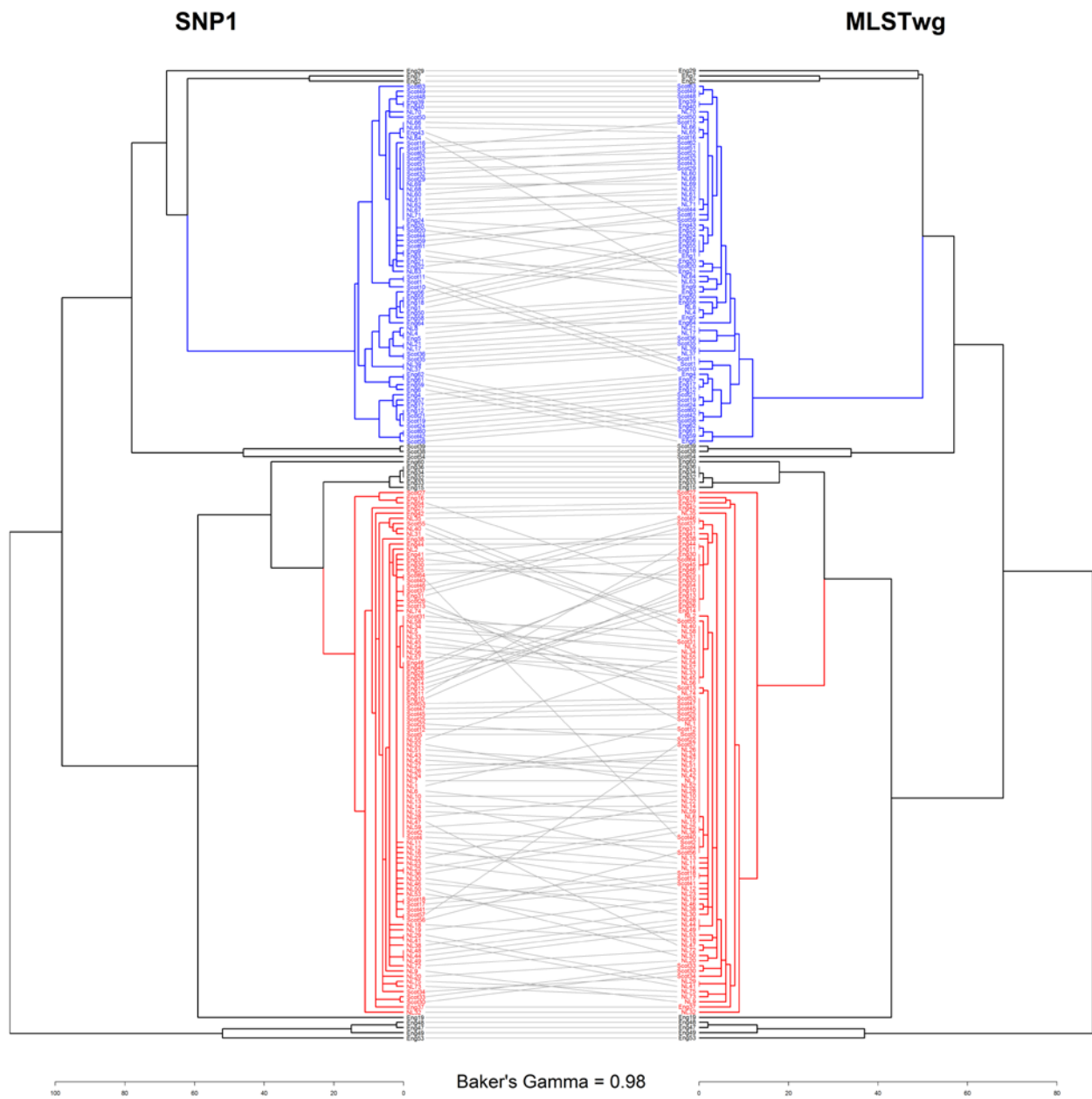


Figure S4. Tanglegram of SNP1 and MLSTwg partitions using complete linkage. The outbreak clusters 1 and 2 are shown in red and blue, respectively.

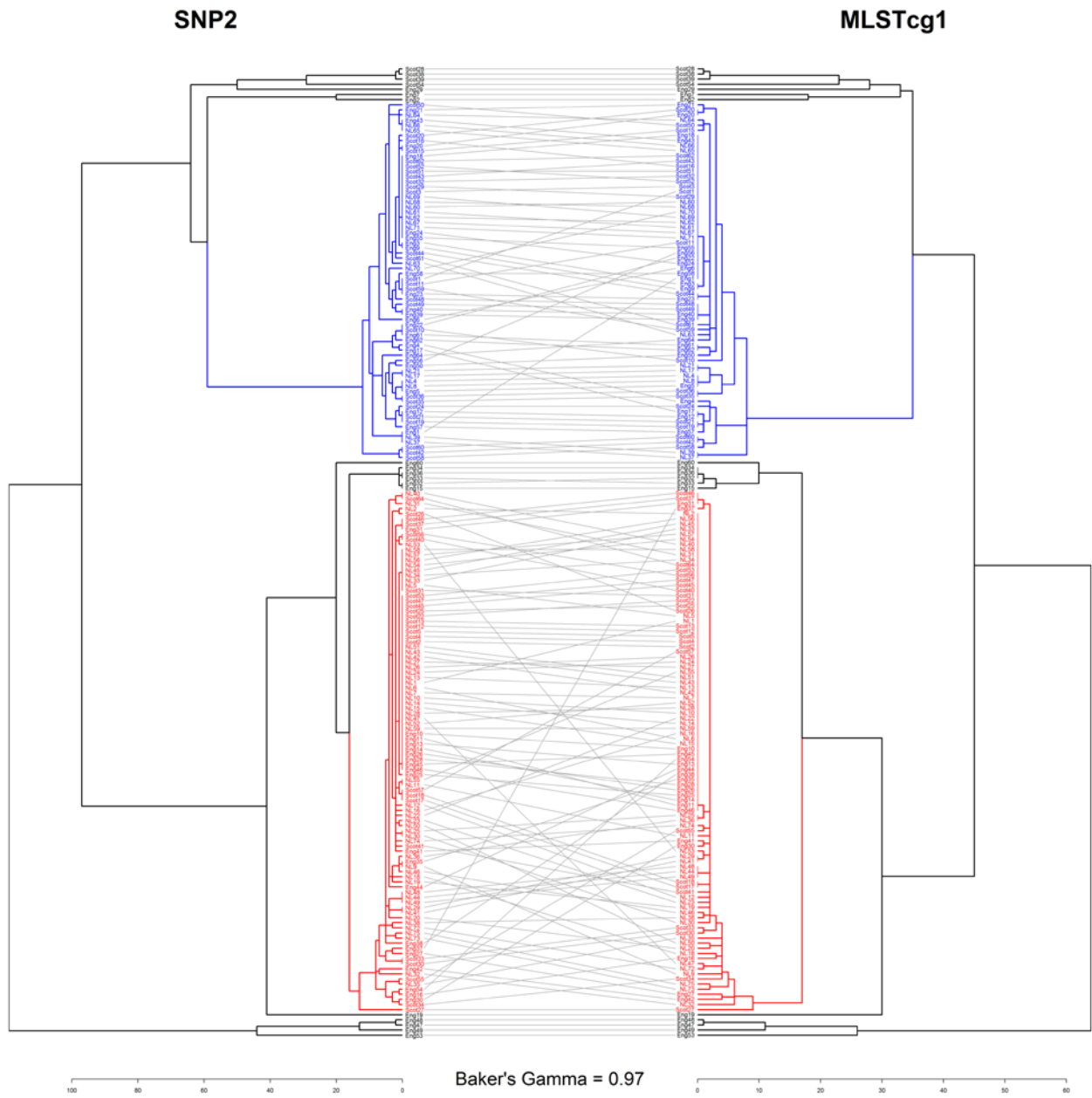


Figure S5. Tanglegram of SNP2 and MLSTcg1 partitions using complete linkage. The outbreak clusters 1 and 2 are shown in red and blue, respectively.

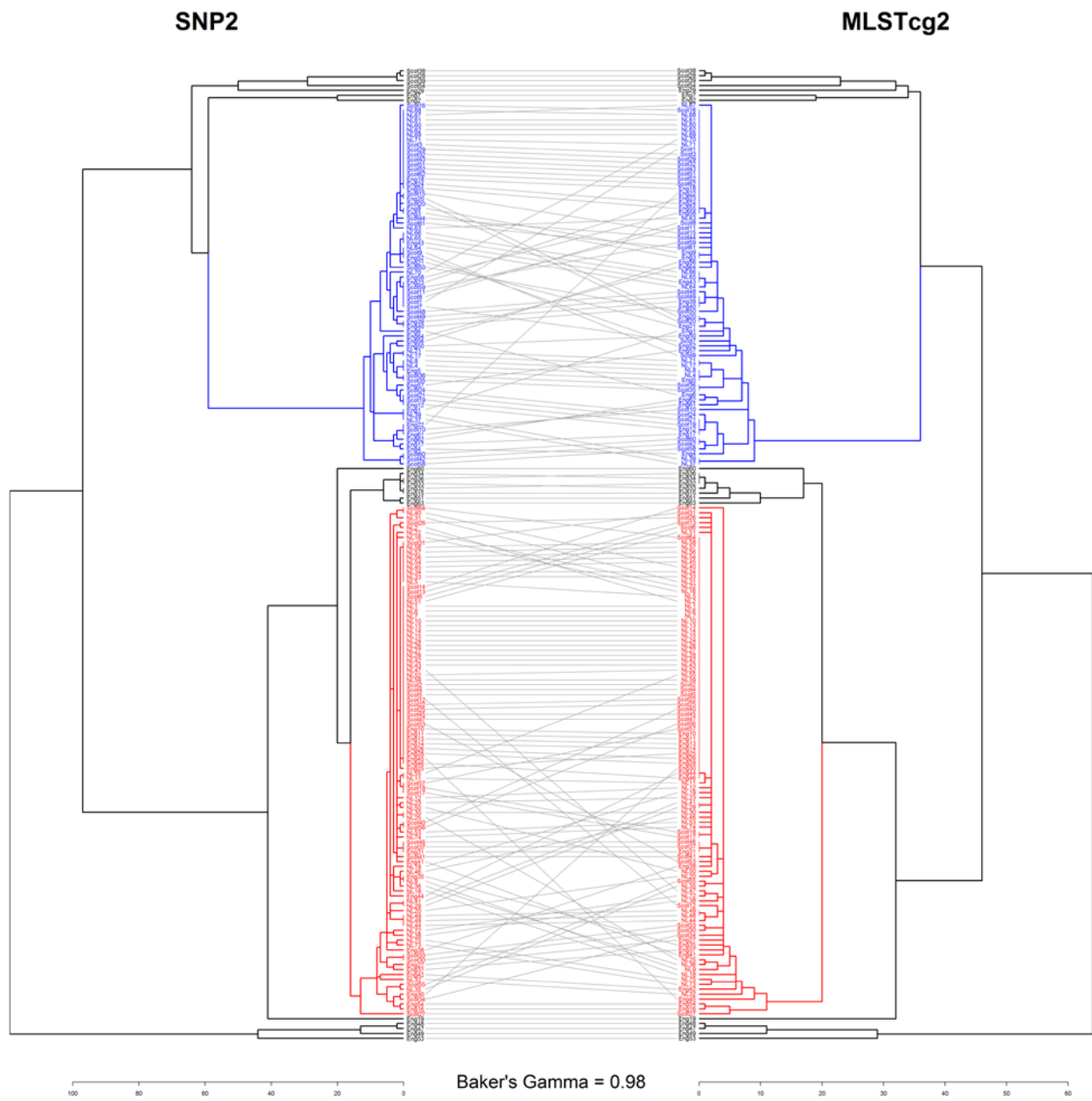


Figure S6. Tanglegram of SNP2 and MLSTcg2 partitions using complete linkage. The outbreak clusters 1 and 2 are shown in red and blue, respectively.

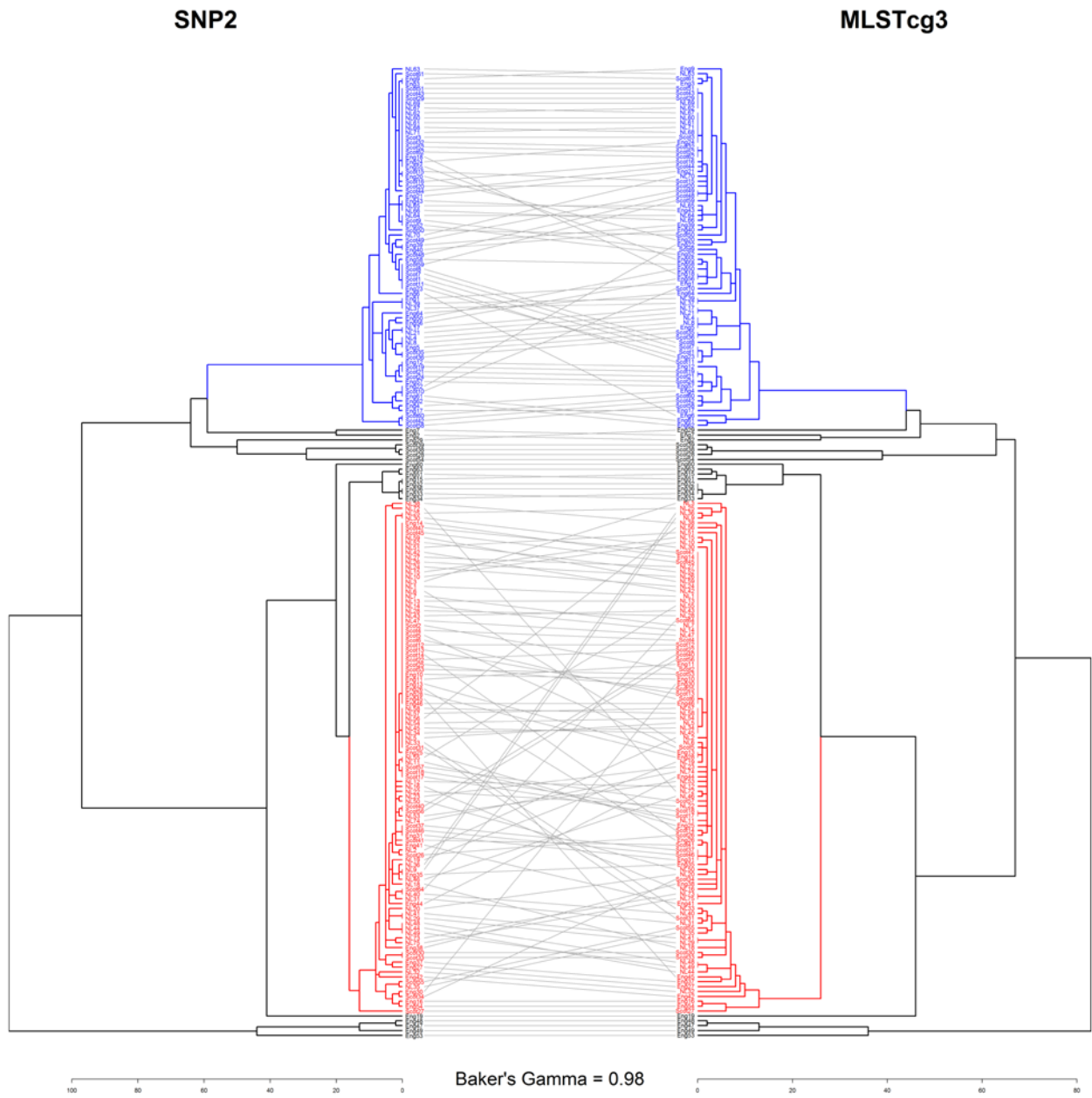


Figure S7. Tanglegram of SNP2 and MLSTcg3 partitions using complete linkage. The outbreak clusters 1 and 2 are shown in red and blue, respectively.

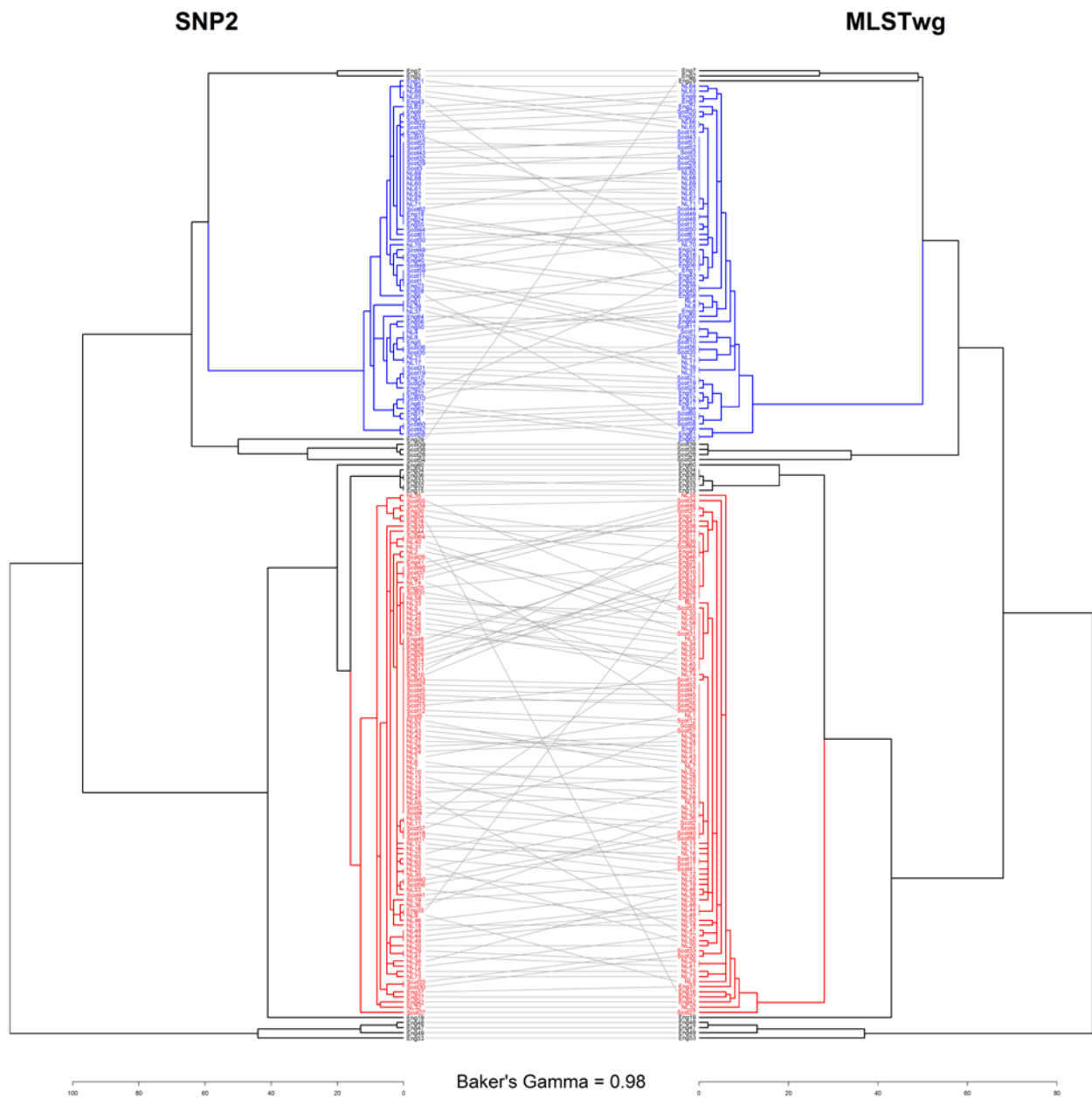


Figure S8. Tanglegram of SNP2 and MLSTwg partitions using complete linkage. The outbreak clusters 1 and 2 are shown in red and blue, respectively.



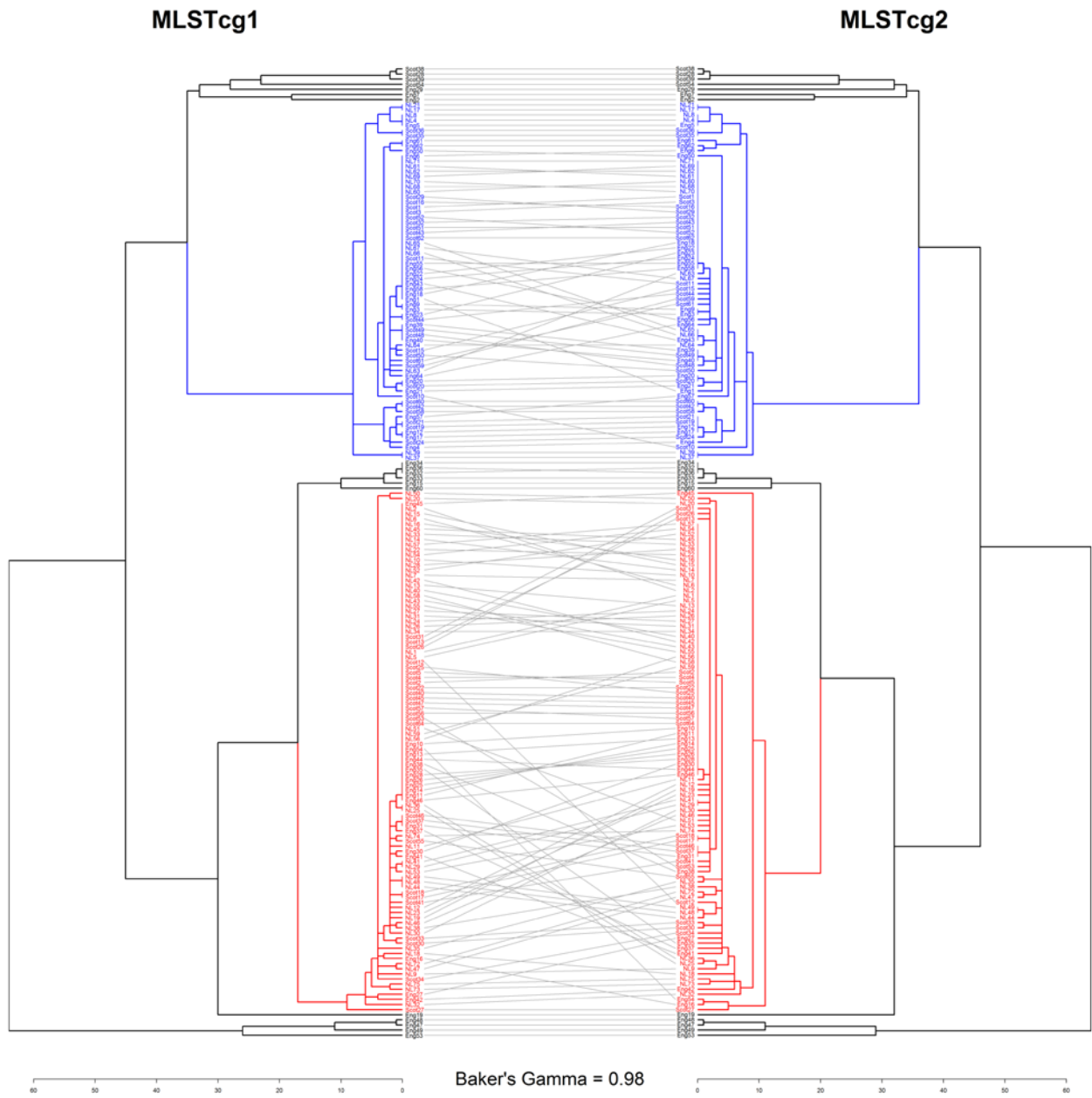


Figure S9. Tanglegram of MLSTcg1 and MLSTcg2 partitions using complete linkage. The outbreak clusters 1 and 2 are shown in red and blue, respectively.

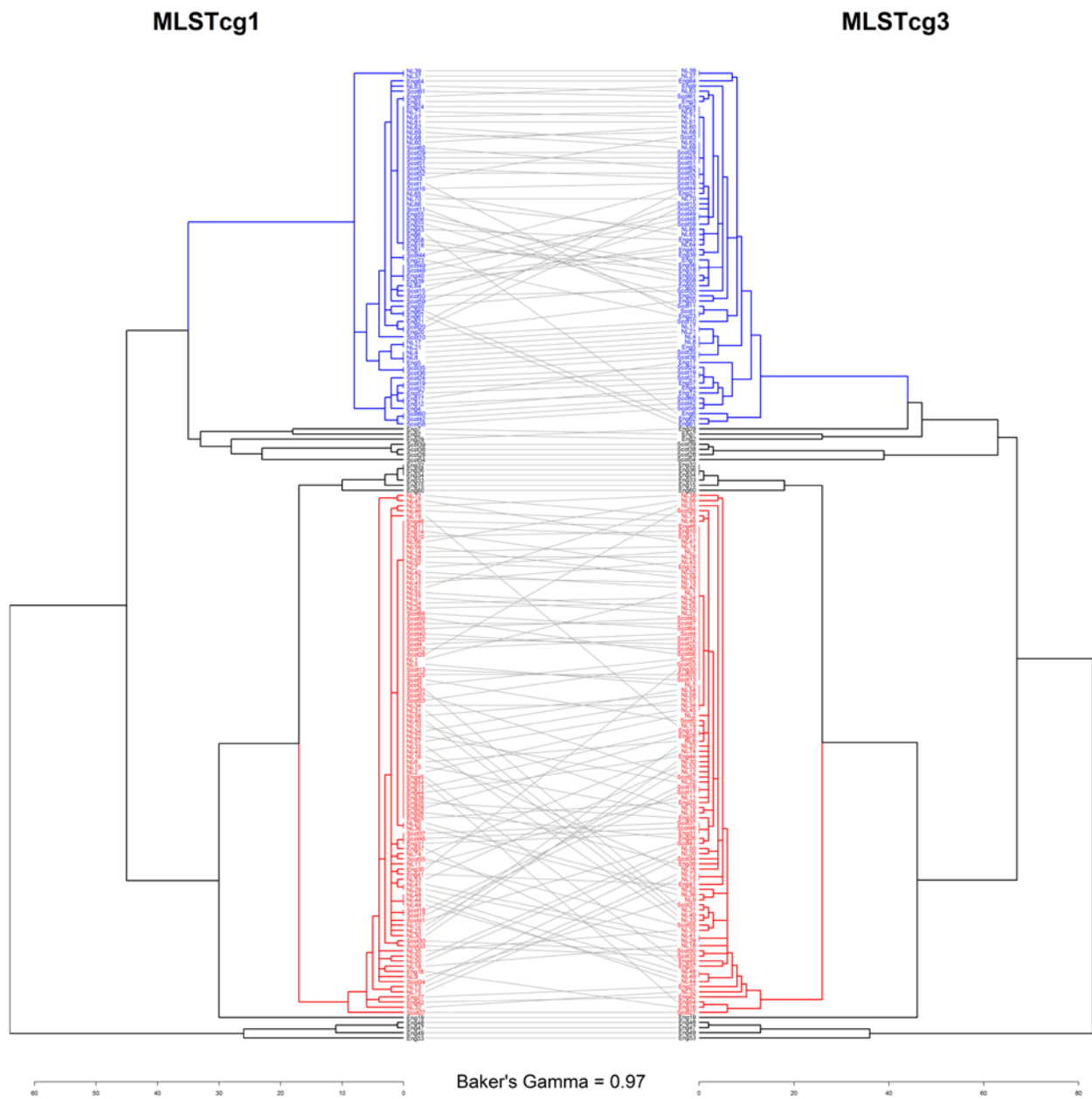


Figure S10. Tanglegram of MLSTcg1 and MLSTcg3 partitions using complete linkage. The outbreak clusters 1 and 2 are shown in red and blue, respectively.

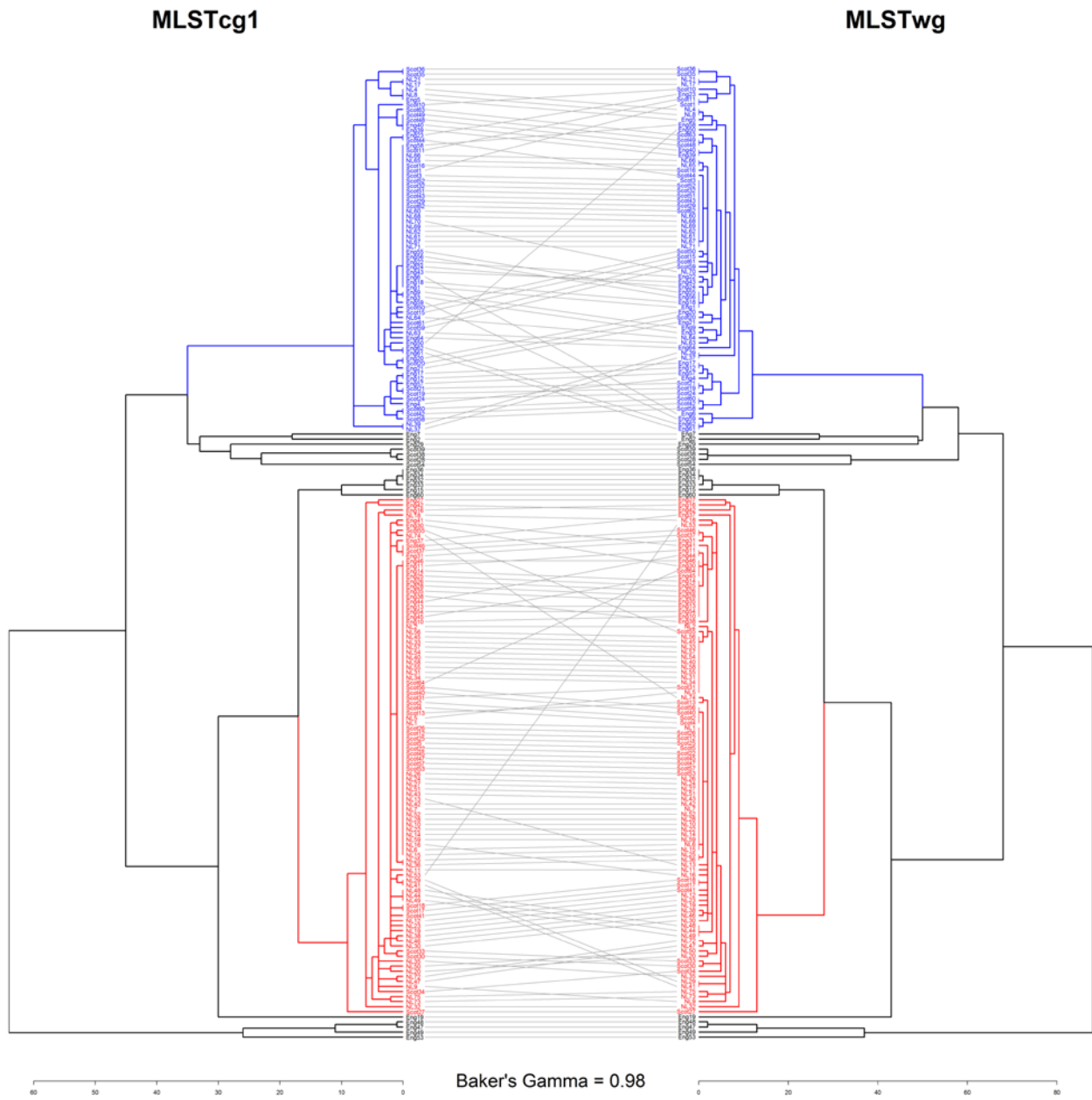


Figure S11. Tanglegram of MLSTcg1 and MLSTwg partitions using complete linkage. The outbreak clusters 1 and 2 are shown in red and blue, respectively.

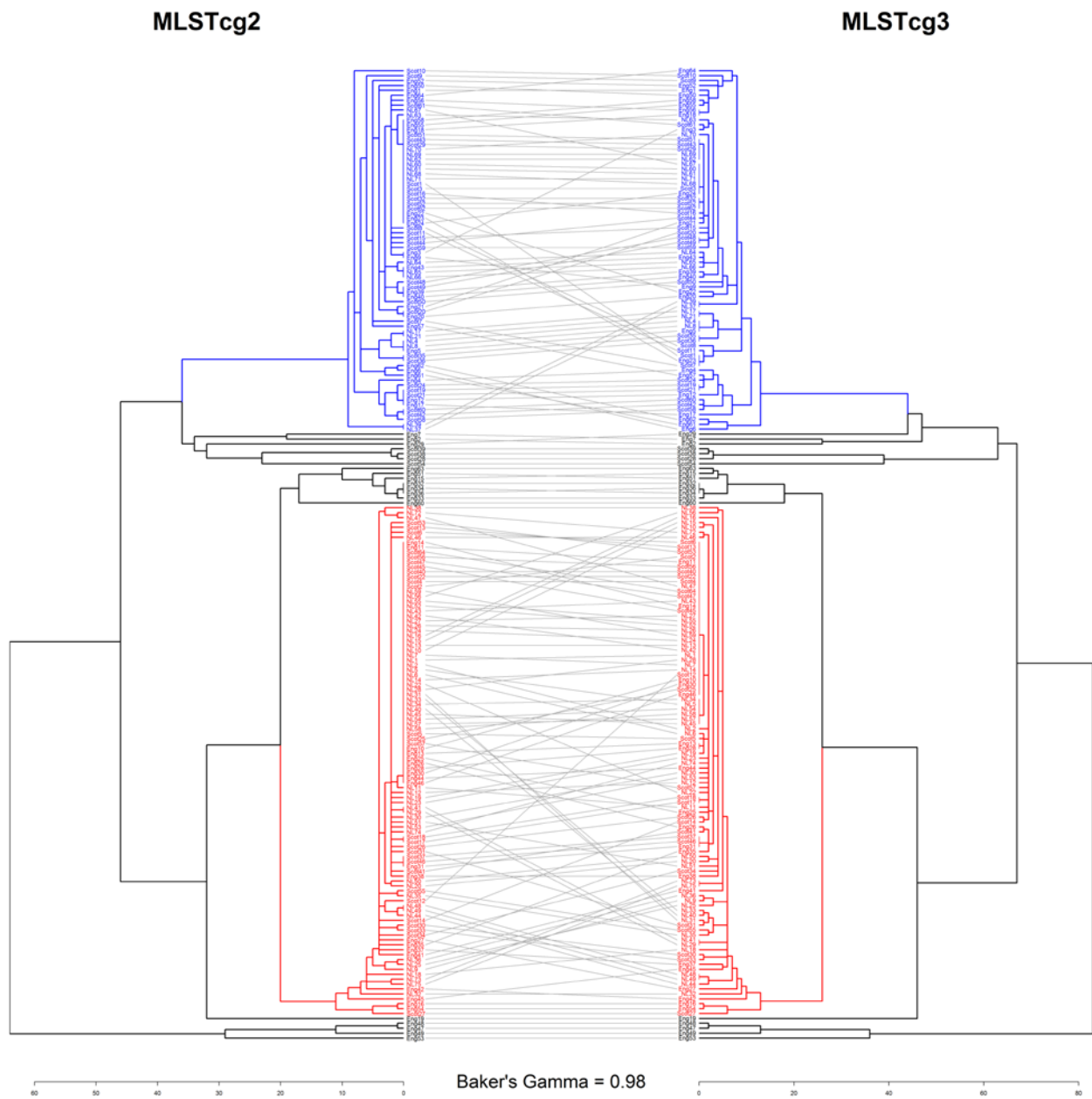


Figure S12. Tanglegram of MLSTcg2 and MLSTcg3 partitions using complete linkage. The outbreak clusters 1 and 2 are shown in red and blue, respectively.

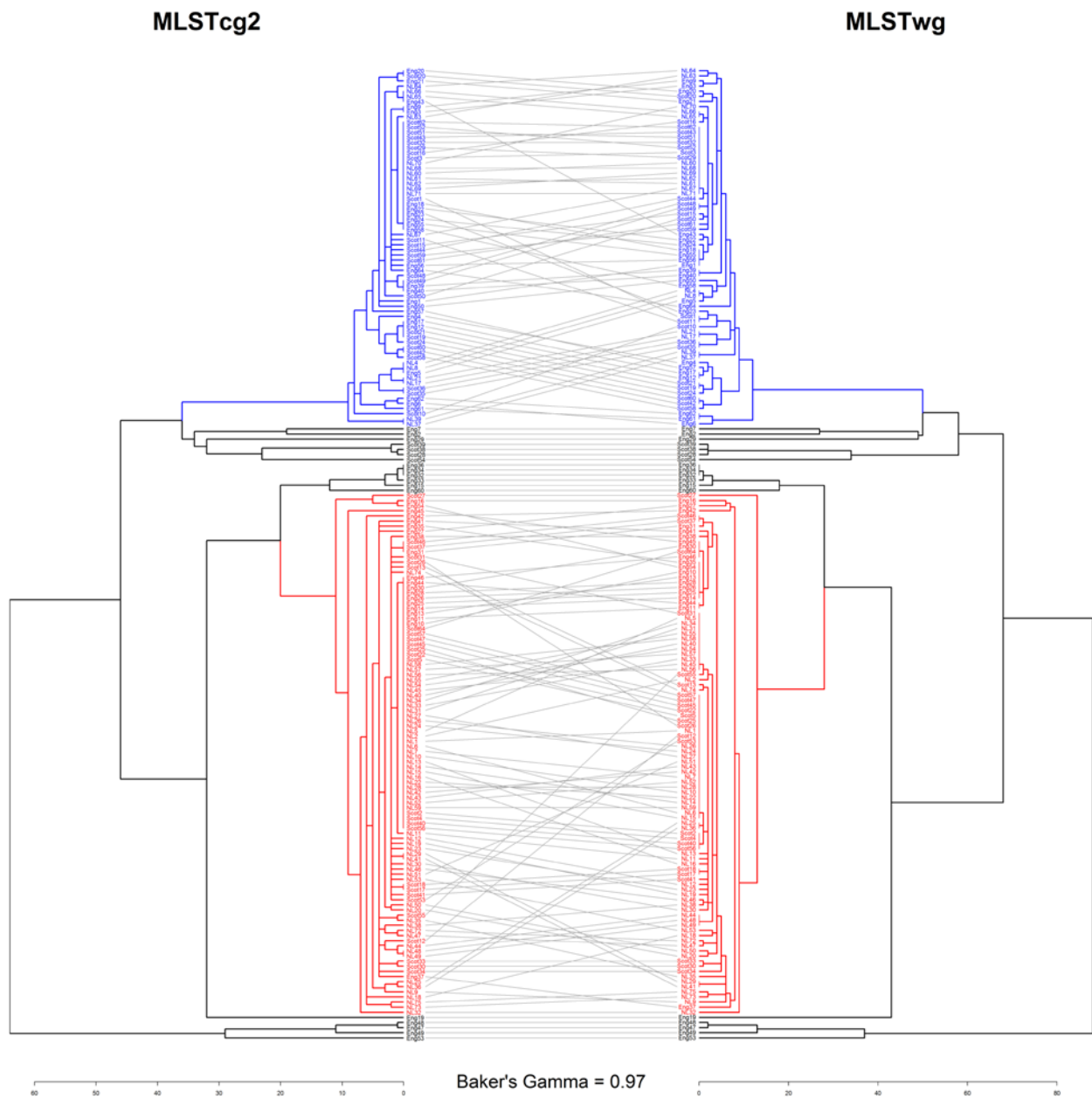


Figure S13. Tanglegram of MLSTcg2 and MLSTwg partitions using complete linkage. The outbreak clusters 1 and 2 are shown in red and blue, respectively.

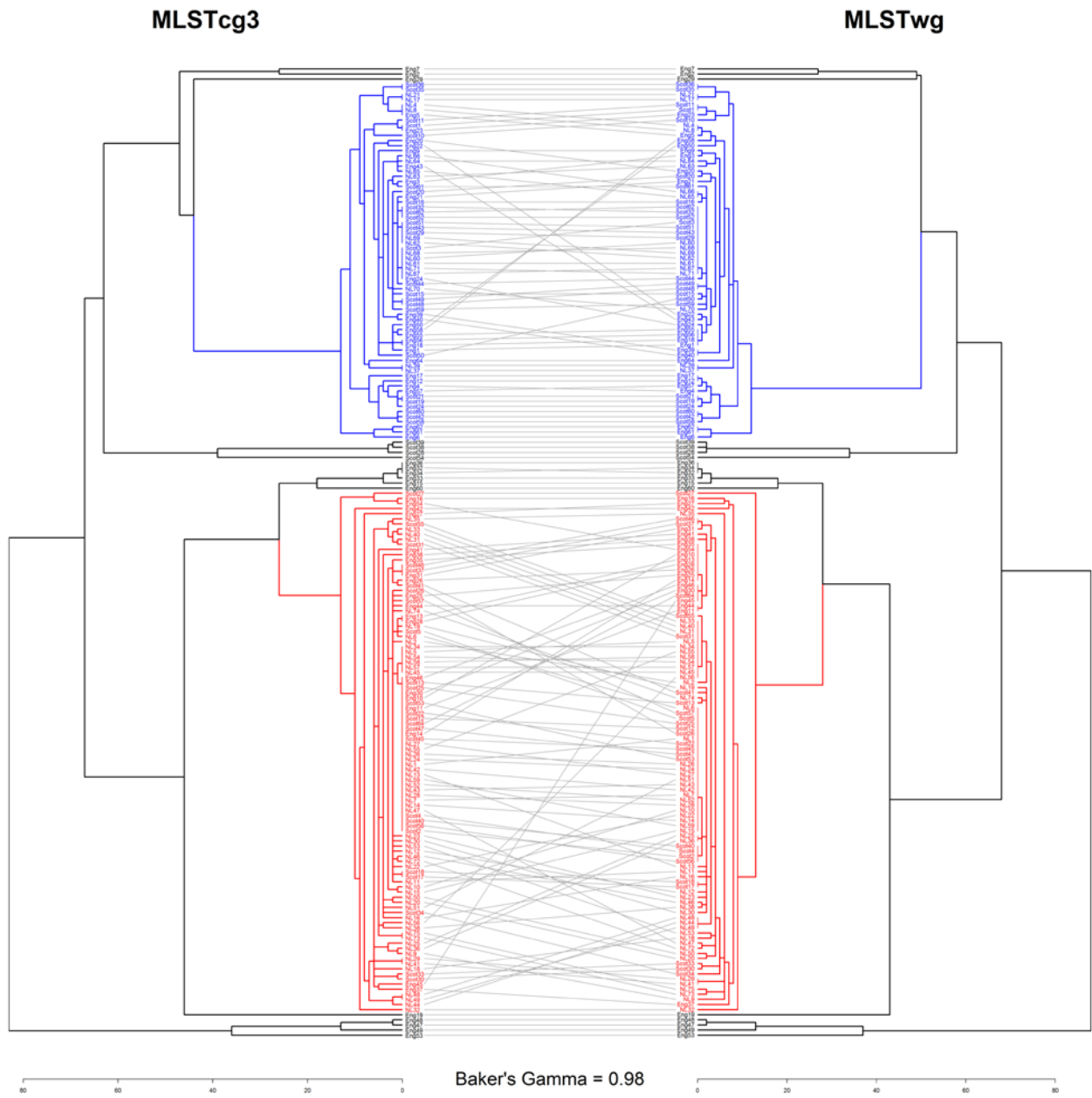


Figure S14. Tanglegram of MLSTcg3 and MLSTwg partitions using complete linkage. The outbreak clusters 1 and 2 are shown in red and blue, respectively.