

## Supplementary File

### **Alterations in seminal plasma proteomic profile in men with primary and secondary infertility**

<sup>1</sup>Ana D. Martins, <sup>1</sup>Manesh Kumar Panner Selvam, \*<sup>1</sup>Ashok Agarwal, <sup>2</sup>Marco G. Alves,  
<sup>1</sup>Saradha Baskaran

<sup>1</sup>American Center for Reproductive Medicine, Cleveland Clinic, Cleveland, OH, USA.

<sup>2</sup>Department of Microscopy, Laboratory of Cell Biology, Institute of Biomedical Sciences Abel Salazar and Unit for Multidisciplinary Research in Biomedicine, University of Porto, Porto, Portugal.

**Figure S1:** Western blot of ANXA2 in seminal plasma of proven fertile donors' group and with primary infertility.

**Figure S2:** Western blot of CDC42 in seminal plasma of proven fertile donors' group and with primary infertility.

**Figure S3:** Western blot of CD63 in seminal plasma of proven fertile donors' group and with primary infertility.

**Figure S4:** Western blot of PRDX2 in seminal plasma of proven fertile donors' group and with primary infertility.

**Figure S5:** Western blot of SEMG1 in seminal plasma of proven fertile donors' group and with primary infertility.

**Figure S6:** Western blot of SEMG2 in seminal plasma of proven fertile donors' group and with primary infertility.

**Figure S7:** Western blot of ANXA2 in seminal plasma of proven fertile donors' group and with secondary infertility.

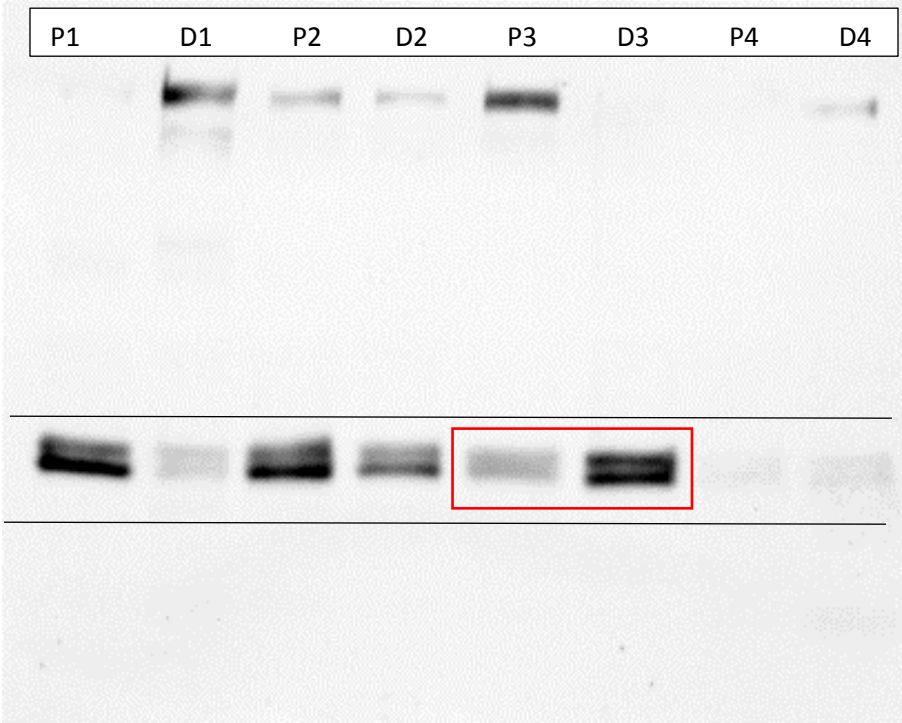
**Figure S8:** Western blot of C4 protein in seminal plasma of proven fertile donors' group and with secondary infertility.

**Figure S9:** Western blot of APP in seminal plasma of proven fertile donors' group and with secondary infertility.

**Figure S10:** Western blot of SEMG1 in seminal plasma of proven fertile donors' group and with secondary infertility.

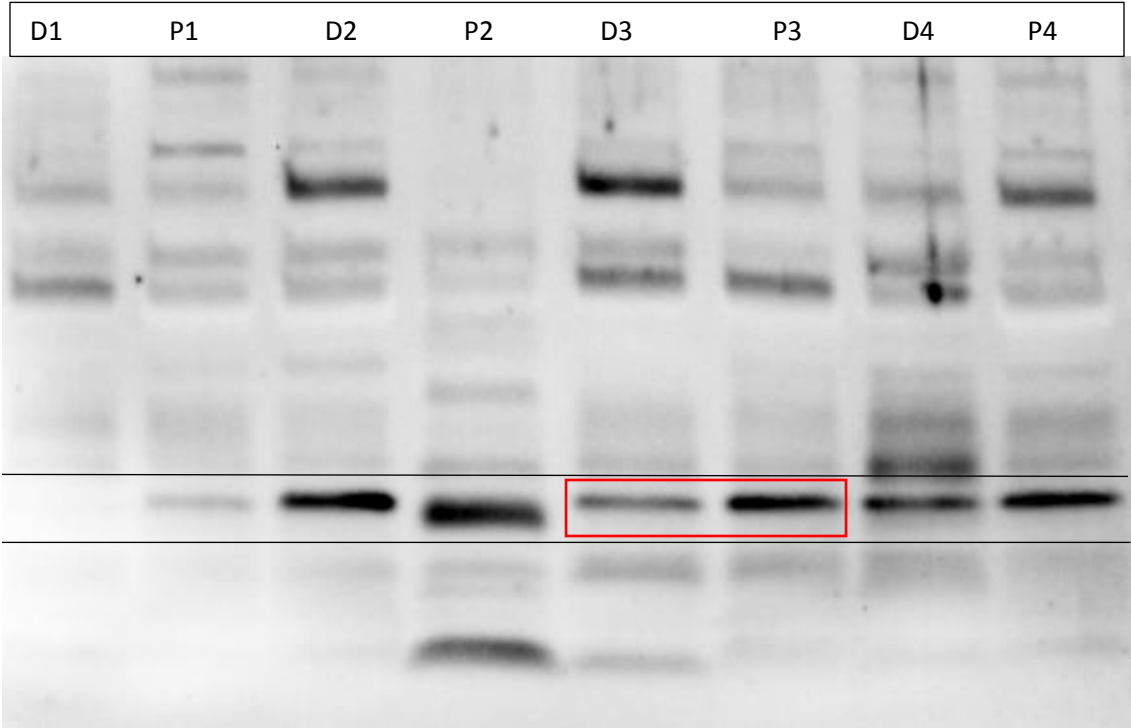
**Figure S11:** Western blot of SEMG2 in seminal plasma of proven fertile donors' group and with secondary infertility.

**Figure S1:**

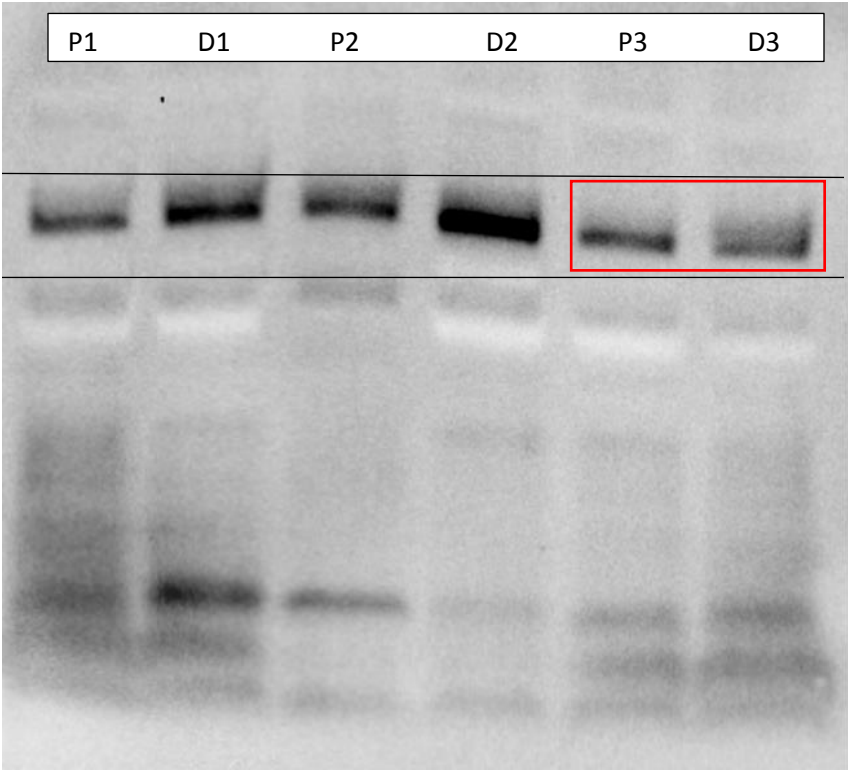


**ANXA2**

**Figure S2:**

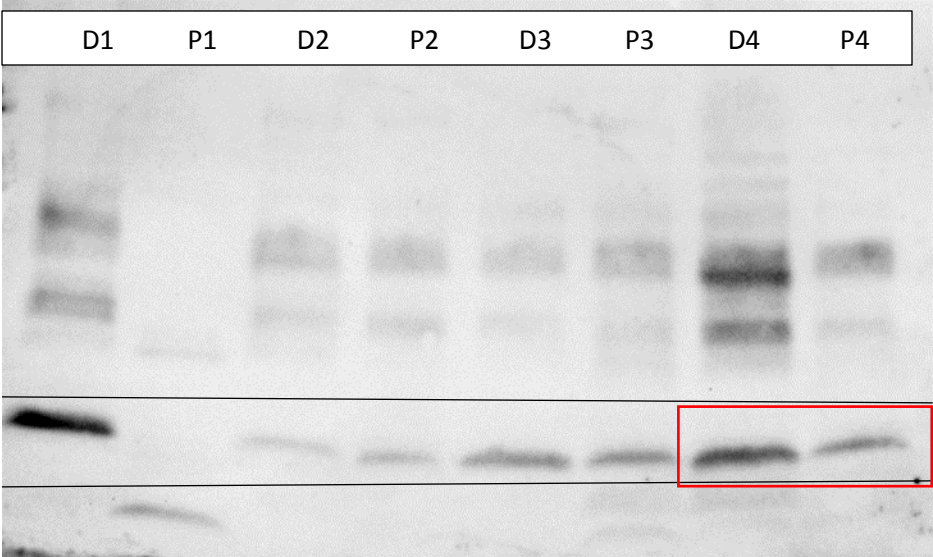


**Figure S3:**



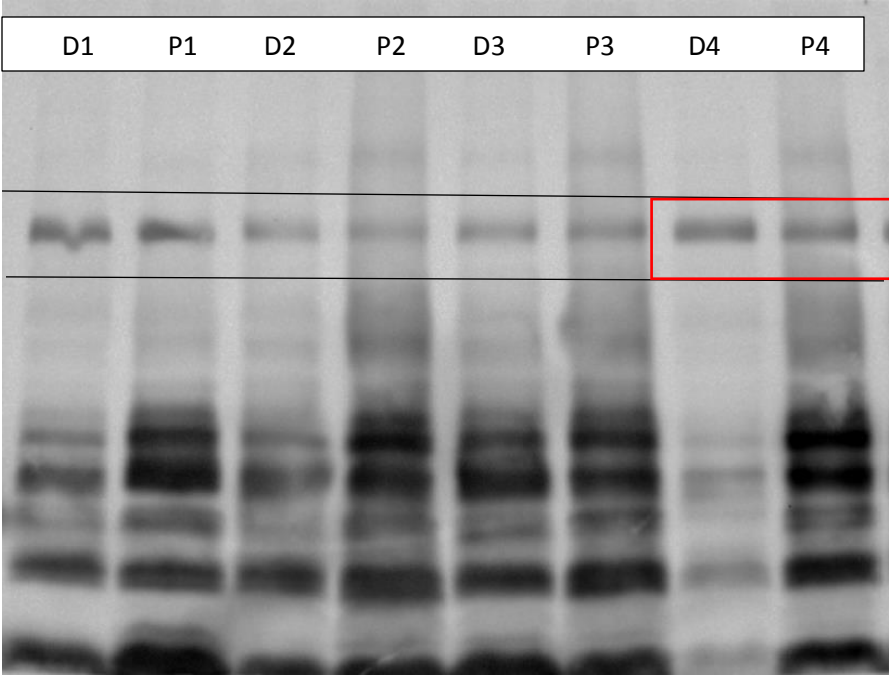
**CD63**

**Figure S4:**

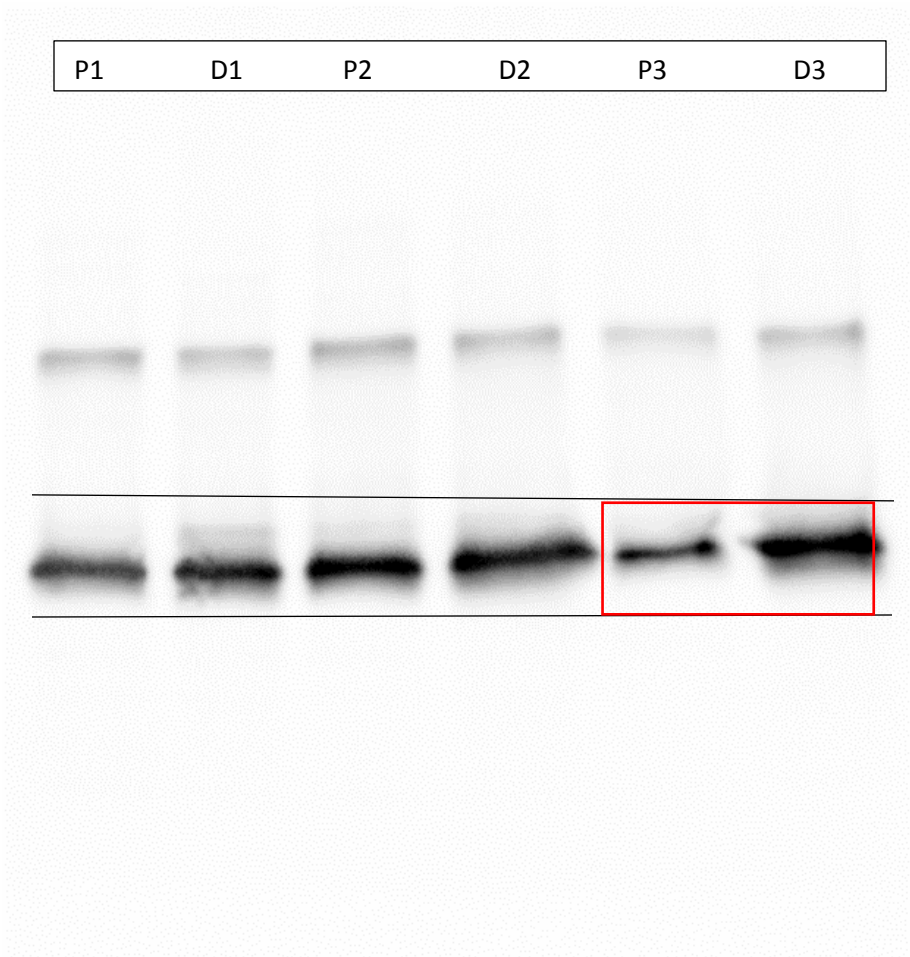


**SEMG1**

**Figure S5:**



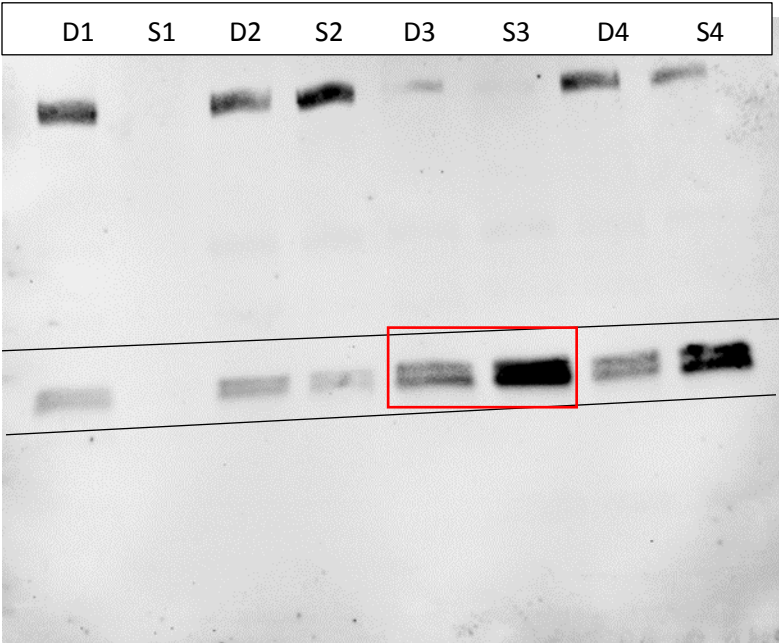
**Figure S6:**



**PRDX2**

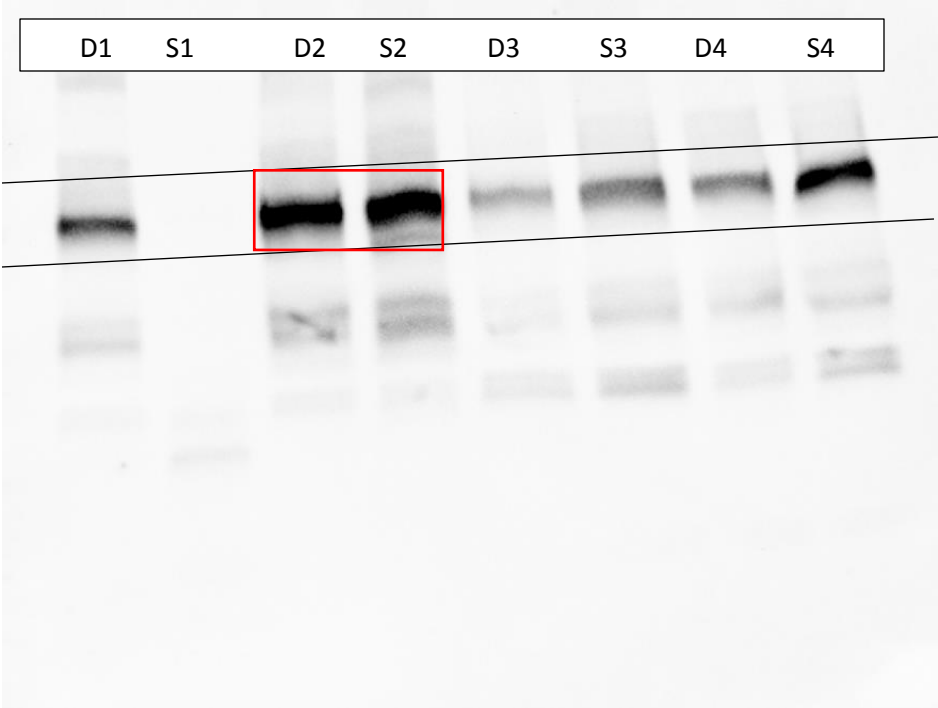


**Figure S7:**



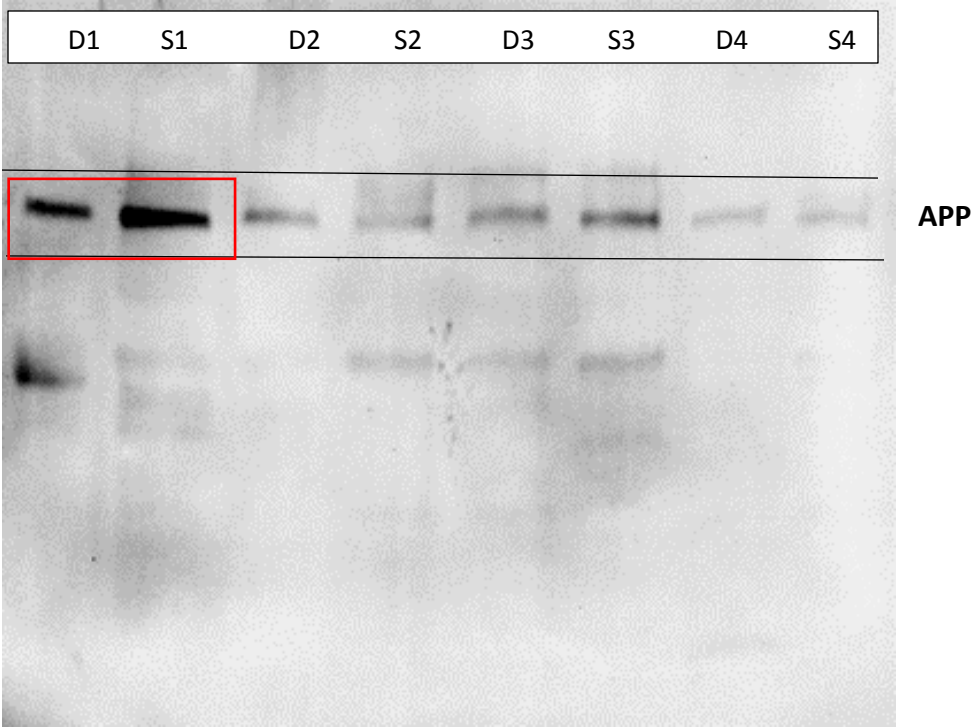
**ANXA2**

**Figure S8:**

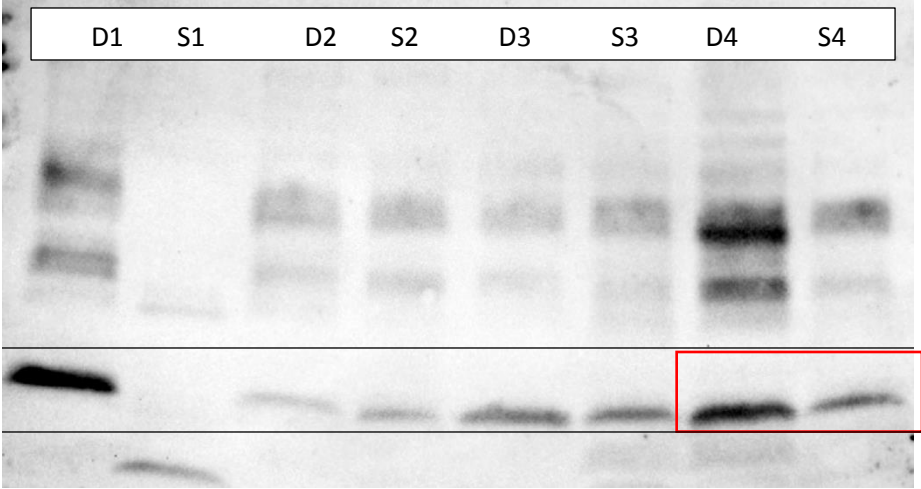


**C4 protein**

**Figure S9:**

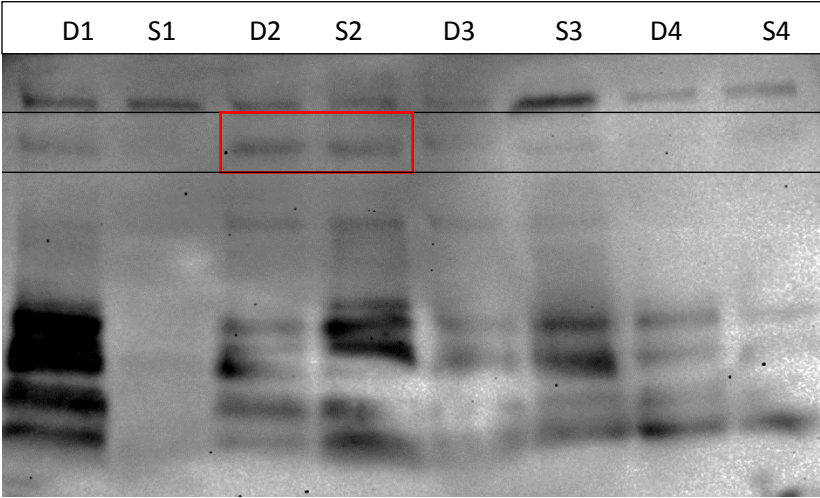


**Figure S10:**



**SMEG1 protein**

**Figure S11:**



**SMEG2 protein**