

A

4°C Light (min)

gcn2-1

Wt (Ler)

+

ZT2

10

30

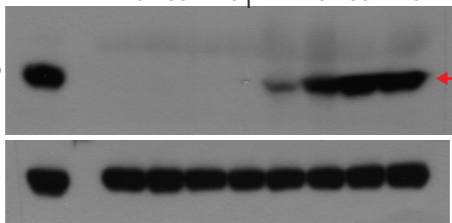
120

ZT2

10

30

120

eIF2 α -PeIF2 α **B**

22°C Light (min)

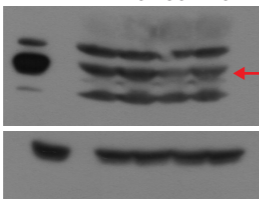
+

ZT2

10

30

120

eIF2 α -PeIF2 α **C**

4°C Dark (min)

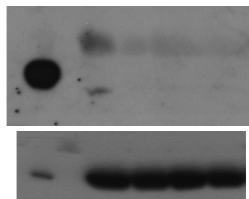
+

0

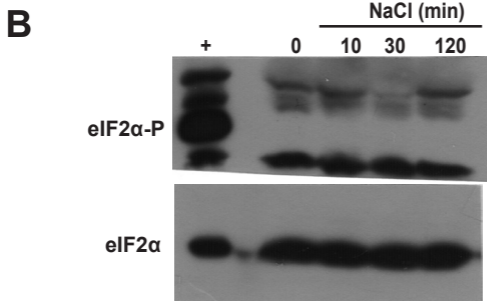
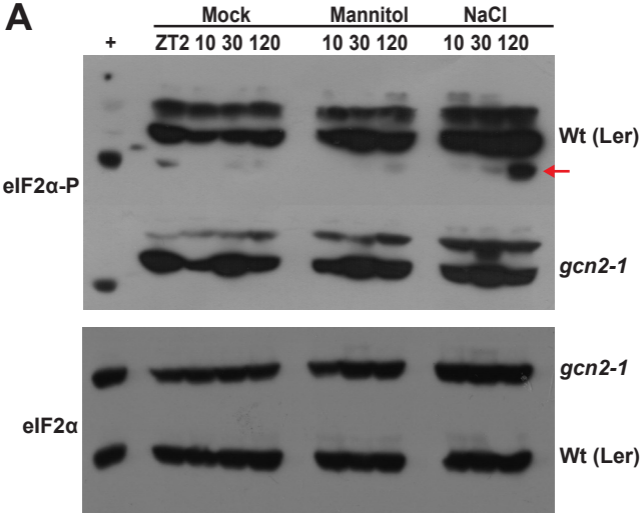
10

30

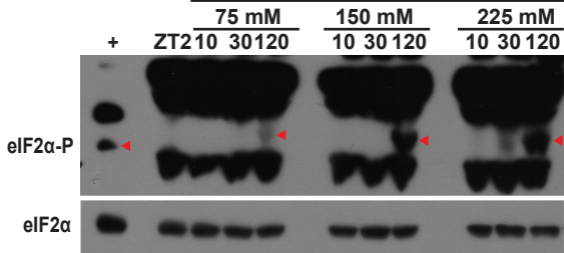
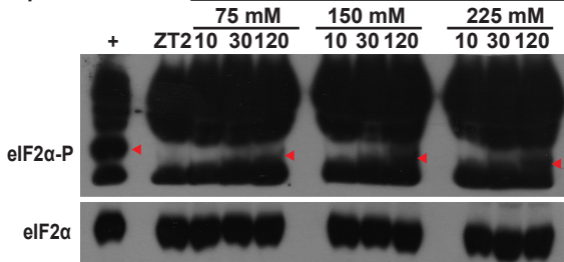
120



Original images of the blots supporting Figure 1. Please refer to the main text for explanation. Red arrow indicates the band for phosphorylated eIF2 α .



Original images of the blots supporting Figure 2. Please refer to the main text for explanation. Red arrow indicates the band for phosphorylated eIF2 α .

Replicate 1**NaCl****Replicate 2****NaCl**

Original images of the blots supporting Figure 2B. Please refer to the main text for explanation. Red arrows indicate the band for phosphorylated eIF2 α (eIF2 α -P). Blots for unphosphorylated eIF2 α are shown below respective eIF2 α -P blots.

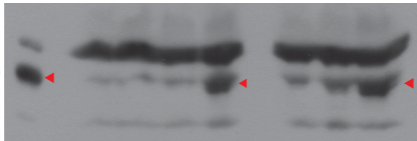
150mM NaCl (min)

Asc + GSH Mock

0 10 30 120 10 30 120

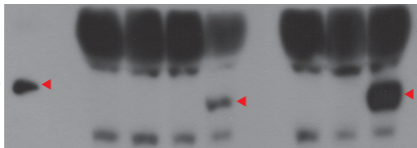
Replicate 1 +

eIF2 α -P



Replicate 2

eIF2 α -P

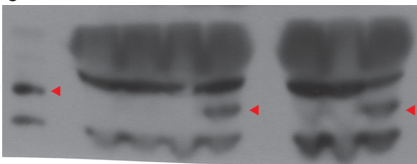


eIF2 α

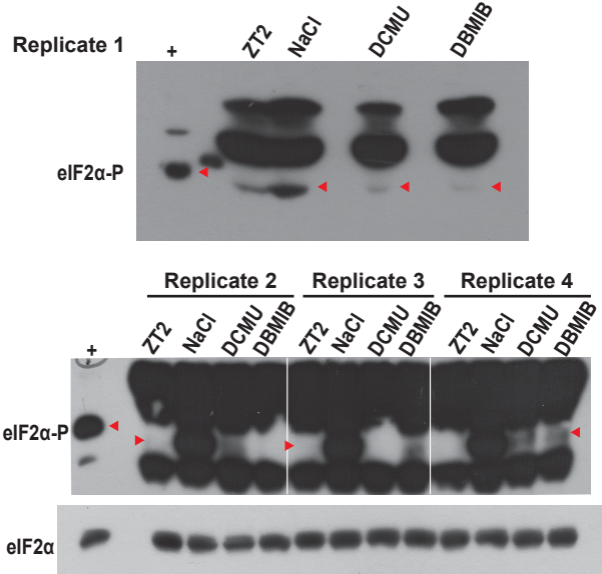


Replicate 3

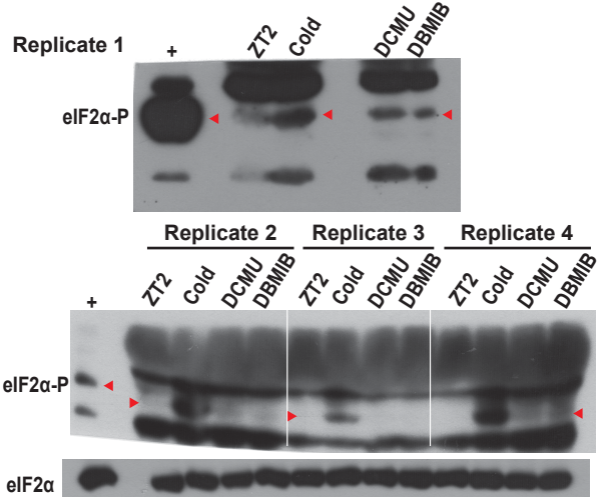
eIF2 α -P



Original images of the immunoblots supporting Figure 3A. Please refer to the main text for explanation. Red arrows indicate the band for phosphorylated eIF2 α (eIF2 α -P). Immunoblot for unphosphorylated eIF2 α is shown below eIF2 α -P immunoblot for replicate 2.



Original images of the immunoblots supporting Figure 3B. Please refer to the main text for explanation. Red arrows indicate the band for phosphorylated eIF2 α (eIF2 α -P). Immunoblot for unphosphorylated eIF2 α is shown below eIF2 α -P blot for replicate 2,3 and 4.



Original images of the immunoblots supporting Figure 3C. Please refer to the main text for explanation. Red arrows indicate the band for phosphorylated eIF2 α (-P). Immunoblot for unphosphorylated eIF2 α is shown below eIF2 α -P blot for replicate 2,3 and 4.