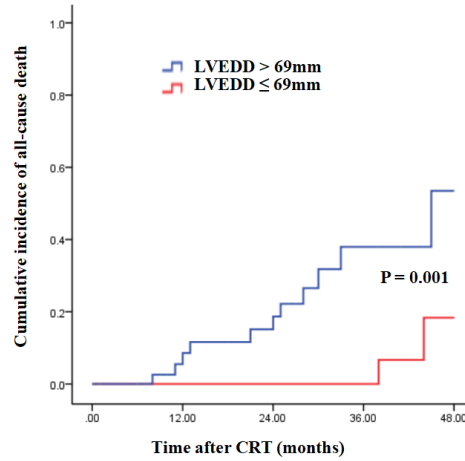
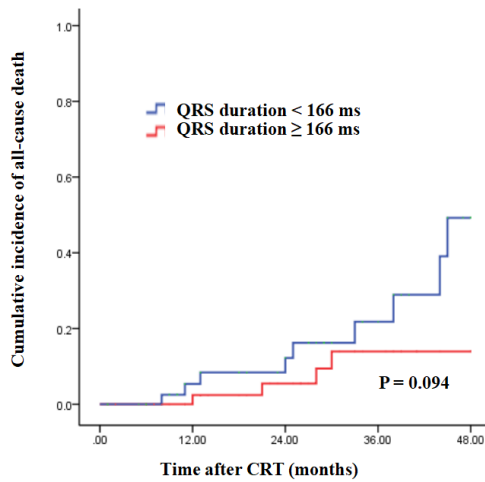


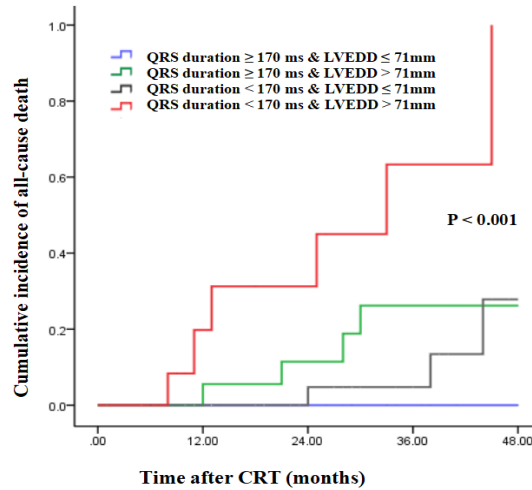
A



B



C



D

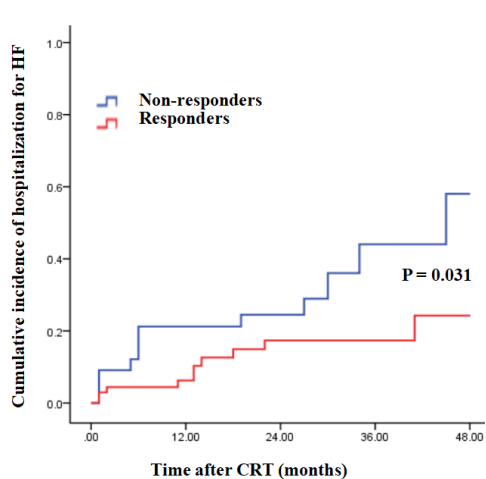
516
517
518
519

520
521
522

523 **Supplemental Figure 1.** Four Kaplan-Meier curves for response category, LVEDD, QRS
524 duration and combination of LVEDD and QRS duration of cumulative incidence of all-cause
525 death at 4 years. (A) For cumulative incidence of all-cause death, responders (red line) performed
526 better compared to non-responders (blue line). (B) For cumulative incidence of all-cause death,
527 LVEDD $\leq 69\text{mm}$ group (red line) performed better compared to LVEDD $> 69\text{mm}$ group (blue
528 line). (C) For cumulative incidence of all-cause death, there was no difference between QRS
529 duration $\leq 166\text{ms}$ group and QRS duration $> 166\text{ms}$ group. (D) For cumulative incidence of
530 all-cause death, combination of QRS duration $\geq 170\text{ ms}$ and LVEDD $\leq 71\text{mm}$ group performed
531 the best compared to others.

532 LVEDD: left ventricular end-diastolic dimension

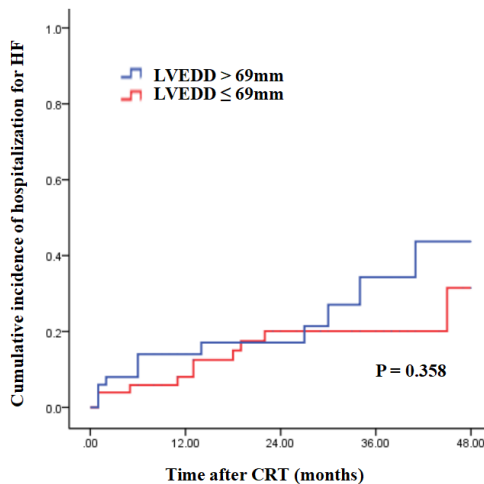
533
534
535



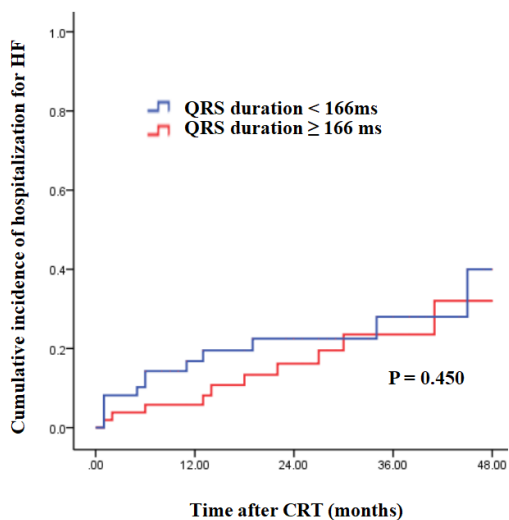
536

537

A



B



538

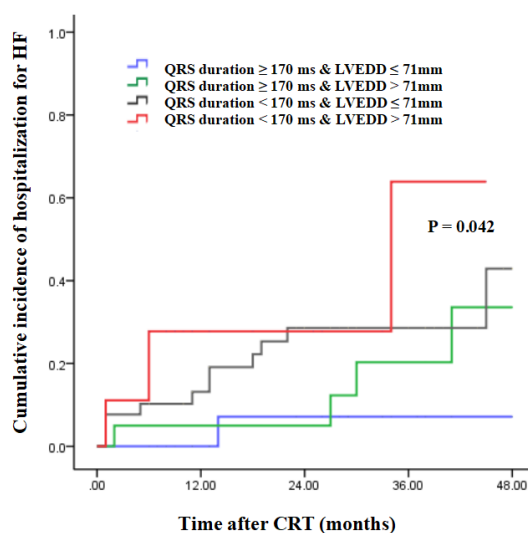
539

540

541

542

C



D

Supplemental Figure 2. Four Kaplan-Meier curves for response category, LVEDD, QRS duration and combination of LVEDD and QRS duration of cumulative incidence of hospitalization for heart failure at 4 years. (A) For cumulative incidence of hospitalization for heart failure at 4 years, responders (red line) performed better compared to non-responders (blue line). (B) For cumulative incidence of hospitalization for heart failure, there was no difference between LVEDD ≤ 69 mm group and LVEDD > 69 mm group (red line). (C) For cumulative incidence of hospitalization for heart failure, there was no difference between QRS duration ≤ 166 ms group and QRS duration > 166 ms group. (D) For cumulative incidence of hospitalization for heart failure, combination of QRS duration ≥ 170 ms and LVEDD ≤ 71 mm group (blue line) performed the best compared to others.

553 LVEDD: left ventricular end-diastolic dimension

554