

Supplemental file contents:

**Supplemental Table 1:** ICD-9 and ICD-10 codes definitions for comorbidities and outcomes.

**Supplemental Table 2:** Rates per 100 person-years for long-term outcomes by type of ACS presentation

**Supplemental Table 3:** Balance after propensity score matching between invasive and conservative approach groups in patients presenting with non-ST elevation acute coronary syndrome.

**Supplemental Figure 1:** Flow chart of the study population.

**Supplemental Figure 2:** Distribution of types of myocardial infarction by timing of presentation

**Supplemental Figure 3:** Unadjusted Kaplan Meier curves of A) survival, B) heart failure, C) bleeding, D) need for revascularization, and E) acute coronary syndrome readmission, with invasive versus conservative approach in patients presenting with non-ST elevation acute coronary syndrome after TAVR

**Supplementary table 1: ICD codes for comorbidities and outcomes**

	ICD-9 code	ICD-10 code
Chronic kidney disease	5853, 5854	N183, N184
End-stage renal disease	5855, 5856, V4511	N185, N186, Z992
Acute Kidney injury	5845, 5846, 5847, 584, 5848, 5849	N17, N170, N171, N172, N178, N179, N990
Atrial fibrillation	42731	I480*, I481*, I482*, I489*
Underweight	78322	V850, Z681, R636
Obesity	2780, 27800, 7802, 27803, 27801	E668, E669, E661, E6609 E663, E669, V853, V853, V8531, V8532, V8533, V8534, V8535, V8536, V8537, V8538, V8539, Z683, Z6831, Z683, Z6833, Z6834, Z6835, Z6836, Z6837, Z6838, Z6839, E662, E6601, V854, V8541, V8542, V8543, V8544, V8545, Z684, Z6841, Z6842, Z6843, Z6844, Z6845
Cardiogenic shock	78551, 78550	R570
Cardiac arrest	4274, 4275, 42741, 42742	I462, I46, I468, I469, I4901, I49, I4902, I9712, I97120, I97121
Blood transfusion	9901, 9902, 9903, 9904, 9905, 9906, 9907, 9908, 9909	30243N0, 30243N1, 30243P0, 30243P1, 30243H0, 30243H1, 30240N0, 30240N1, 30240P0, 30240P1, 30240H0, 30240H1, 30230H0, 30230H1, 30230N0, 30230N1, 30230P0, 30230P1, 30233N0, 30233N1, 30233P0, 30233P1
Sleep apnea	78057, 32723	G4730, G4733
Heart failure	39891, 40201, 40211, 40291, 40401, 40411, 40491, 4280-4289	I5020, I5021, I5022, I5023, I5030, I5031, I5032, I5033, I5040, I5041, I5042, I5043
Bleeding	4552, 4555, 4558, 4560, 45620, 5307, 53082, 5310-5316, 5320-5326, 5330- 5336, 5340-5346, 53501-53561, 56202- 56203, 56212-56213, 5693, 56985, 5780,	R310*, R311*, R312*, R319*, M25019, R040*, R041*, R042*, R0481, R0489, R049, I312*, R58* S064X0A, S064X1A, S064X2A, S064X3A, S064X4A, S064X5A, S064X6A, S064X7A, S064X8A,

	5781, 5789, 53783, 56881, 430*, 431*, 432*, 59970, 59971, 59972, 71911, 7847*, 7848x, 7863*, 4230*, 4590*, 852*, 853*	S064X9A, S065X0A, S065X1A, S065X2A, S065X3A, S065X4A, S065X5A, S065X6A, S065X7A, S065X8A, S065X9A, S066X0A, S066X1A, S066X2A, S066X3A, S066X4A, S066X5A, S066X6A, S066X7A, S066X8A, S066X9A.
Ischemic stroke	433*, 434*, 436*, 4371, 4378, 4379	I63, I65, I66, I6781, I6782, I6789, I679
Anterior ST-elevation myocardial infarction	4100, 41000, 41001, 4101, 41010, 41011	I210, I2101, I2102, I2109
Inferior ST-elevation myocardial infarction	4102, 41020, 41021, 4103, 41030, 41031, 4104, 41040, 41041, 4105, 41050, 41051, 4106, 41060, 41061	I211, I2111, I2119, I2121, I212, I2129, I213,
Non ST-elevation myocardial infarction	4107, 41070, 41071	I214
Unstable angina	4111	I200
Drug eluting stent	3607	0270346, 027034Z, 0270356, 027035Z, 0270366, 027036Z, 0270376, 027037Z, 0271346, 027134Z, 0271356, 027135Z, 0271366, 027136Z, 0271376, 027137Z, 0272346, 027234Z, 0272356, 027235Z, 0272366, 027236Z, 0272376, 027237Z, 0273346, 027334Z, 0273356, 027335Z, 0273366, 027336Z, 0273376, 027337Z, 0270446, 027044Z, 0270456, 027045Z, 0270466, 027046Z, 0270476, 027047Z, 0271446, 027144Z, 0271456, 027145Z, 0271466, 027146Z, 0271476, 027147Z, 0272446, 027244Z, 0272456, 027245Z, 0272466, 027246Z, 0272476, 027247Z, 0273446, 027344Z, 0273456, 027345Z, 0273466, 027346Z, 0273476, 027347Z
Bare metal stent	3606	02703D6, 02703DZ, 02703E6,

		02703EZ, 02703F6, 02703FZ, 02703G6, 02703GZ, 02713D6, 02713DZ, 02713E6, 02713EZ, 02713F6, 02713FZ, 02713G6, 02713GZ, 02723D6, 02723DZ, 02723E6, 02723EZ, 02723F6, 02723FZ, 02723G6, 02723GZ, 02733D6, 02733DZ, 02733E6, 02733EZ, 02733F6, 02733FZ, 02733G6, 02733GZ, 02704D6, 02704DZ, 02704E6, 02704EZ, 02704F6, 02704FZ, 02704G6, 02704GZ, 02714D6, 02714DZ, 02714E6', 02714EZ, 02714F6, 02714FZ, 02714G6, 02714GZ, 02724D6, 02724DZ, 02724E6, 02724EZ, 02724F6', 02724FZ, 02724G6, 02724GZ, 02734D6, 02734DZ, 02734E6, 02734EZ, 02734F6, 02734FZ, 02734G6, 02734GZ
Plain old balloon angioplasty	0066	02703Z6, 02703ZZ, 02713Z6, 02713ZZ, 02723Z6, 02723ZZ, 02733Z6, 02733ZZ, 02704Z6, 02704ZZ, 02714Z6, 02714ZZ, 02724Z6, 02724ZZ, 02734Z6, 02734ZZ
Coronary angiography	8850, 8853, 8854, 8855, 8856, 8857,	B2110ZZ, B211010, B211110, B2111ZZ, B211Y10, B211YZZ, B210010, B2100ZZ, B210110, B2101ZZ, B210Y10, B210YZZ
Nuclear Myocardial perfusion imaging	9205	C2161ZZ, C216YZZ, C21G1ZZ, C21GDZZ, C21GSZZ, C21GYZZ, C21GZZZ, C21YZZZ
Intravascular ultrasound	0024	B241YZZ, B241ZZ3, B241ZZZ, B240YZZ, B240ZZ3, B240ZZZ
Intervention on one coronary vessel	0040	0270346, 027034Z, 02703D6, 02703DZ, 0270446, 027044Z, 02704D6, 02704DZ, 0270356, 027035Z, 02703E6, 02703EZ, 0270456, 027045Z, 02704E6, 02704EZ, 0270366, 027036Z, 02703F6, 02703FZ, 0270466, 027046Z, 02704F6, 02704FZ, 0270376, 027037Z, 02703G6, 02703GZ, 0270476, 027047Z,

		02704G6, 02704GZ
Intervention on two coronary vessels	0041	0271346, 027134Z, 02713D6, 02713DZ, 0271446, 027144Z, 02714D6, 02714DZ, 0271356, 027135Z, 02713E6, 02713EZ, 0271456, 027145Z, 02714E6, 02714EZ, 0271366, 027136Z, 02713F6, 02713FZ, 0271466, 027146Z, 02714F6, 02714FZ, 0271376, 027137Z, 02713G6, 02713GZ, 0271476, 027147Z, 02714G6, 02714GZ
Intervention on three coronary vessels	0042	0272346, 027234Z, 02723D6, 02723DZ, 0272446, 027244Z, 02724D6, 02724DZ, 0272356, 027235Z, 02723E6, 02723EZ, 0272456, 027245Z, 02724E6, 02724EZ, 0272366, 027236Z, 02723F6, 02723FZ, 0272466, 027246Z, 02724F6, 02724FZ, 0272376, 027237Z, 02723G6, 02723GZ, 0272476, 027247Z, 02724G6, 02724GZ
Intervention on four or more coronary vessels	0043	0273346, 027334Z, 02733D6, 02733DZ, 0273446, 027344Z, 02734D6, 02734DZ, 0273356, 027335Z, 02733E6, 02733EZ, 0273456, 027345Z, 02734E6, 02734EZ, 0273366, 027336Z, 02733F6, 02733FZ, 0273466, 027346Z, 02734F6, 02734FZ, 0273376, 027337Z, 02733G6, 02733GZ, 0273476, 027347Z, 02734G6, 02734GZ
One stent placed	0045	0270346, 027034Z, 02703D6, 02703DZ, 0270446, 027044Z, 02704D6, 02704DZ, 0271346, 027134Z, 02713D6, 02713DZ, 0271446, 027144Z, 02714D6, 02714DZ, 0272346, 027234Z, 02723D6, 02723DZ, 0272446, 027244Z, 02724D6, 02724DZ, 0273346, 027334Z, 02733D6, 02733DZ, 0273446, 027344Z,

		02734D6, 02734DZ
Two stents placed	0046	0270356, 027035Z, 02703E6, 02703EZ, 0270456, 027045Z, 02704E6, 02704EZ, 0271356, 027135Z, 02713E6, 02713EZ, 0271456, 027145Z, 02714E6, 02714EZ, 0272356, 027235Z, 02723E6, 02723EZ, 0272456, 027245Z, 02724E6, 02724EZ, 0273356, 027335Z, 02733E6, 02733EZ, 0273456, 027345Z, 02734E6, 02734EZ
Three stents placed	0047	0270366, 027036Z, 02703F6, 02703FZ, 0270466, 027046Z, 02704F6, 02704FZ, 0271366, 027136Z, 02713F6, 02713FZ, 0271466, 027146Z, 02714F6, 02714FZ, 0272366, 027236Z, 02723F6, 02723FZ, 0272466, 027246Z, 02724F6, 02724FZ, 0273366, 027336Z, 02733F6, 02733FZ, 0273466, 027346Z, 02734F6, 02734FZ
Four or more stents placed	0048	0270376, 027037Z, 02703G6, 02703GZ, 0270476, 027047Z, 02704G6, 02704GZ, 0271376, 027137Z, 02713G6, 02713GZ, 0271476, 027147Z, 02714G6, 02714GZ, 0272376, 027237Z, 02723G6, 02723GZ, 0272476, 027247Z, 02724G6, 02724GZ, 0273376, 027337Z, 02733G6, 02733GZ, 0273476, 027347Z, 02734G6, 02734GZ

**Supplemental Table 2):** rates per 100 person-years for long-term outcomes by type of ACS presentation

Outcome	Unstable angina	NSTEMI	STEMI	P value
	Rates per 100 person-years			
Long-term recurrent ACS	12.3	27.2	54.6	<0.001
Long-term need for coronary revascularization	12.4	12.6	10.7	0.2
Long-term mortality	24.3	45.8	58.7	<0.0001
Long-term HF	12.5	15.1	13.7	0.2
Long-term bleeding	7.6	9.6	8.3	0.7

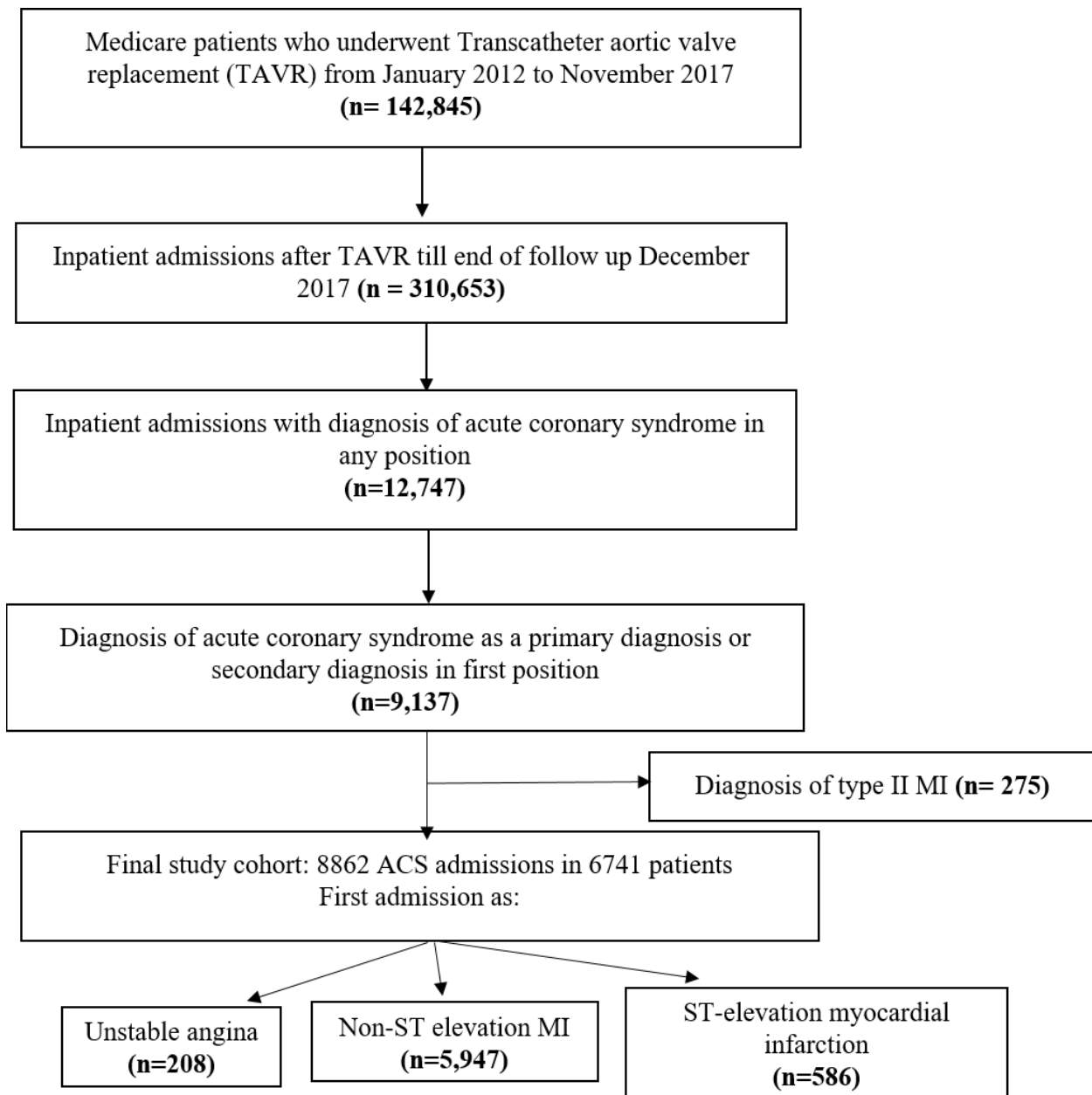
**Supplemental Table 3):** Balance between invasive and conservative approach groups in NSTEMI-ACS after propensity score matching.

Variable	Conservative	Invasive	Standardized difference*
N	1750	1750	
Age	78.34 (8.47)	78.33 (9.18)	0.00
Male Sex	0.61 (0.49)	0.62 (0.49)	-0.01
Race	1.13 (0.44)	1.14 (0.44)	-0.01
Diabetes	0.56 (0.50)	0.56 (0.50)	-0.00
Hypertension	0.95 (0.21)	0.95 (0.22)	0.02
Congestive heart failure	0.82 (0.38)	0.83 (0.38)	-0.01
Chronic pulmonary disease	0.43 (0.50)	0.44 (0.50)	-0.01
Prior ischemic stroke	0.24 (0.43)	0.24 (0.43)	0.00
Peripheral vascular disease	0.48 (0.50)	0.48 (0.50)	0.00
Hypothyroidism	0.26 (0.44)	0.25 (0.43)	0.02
Liver disease	0.03 (0.18)	0.03 (0.18)	0.01
Alcohol abuse	0.02 (0.12)	0.01 (0.11)	0.02
Deficiency Anemias	0.47 (0.50)	0.46 (0.50)	0.02
Chronic kidney disease	0.31 (0.46)	0.31 (0.46)	-0.00
Prior bleeding	0.41 (0.49)	0.40 (0.49)	0.03
Prior cerebral hemorrhage	0.01 (0.09)	0.01 (0.08)	0.03
Prior coronary artery disease	0.93 (0.25)	0.92 (0.26)	0.02
Admission with ACS within 6 months before TAVR	0.23 (0.42)	0.23 (0.42)	0.00
Smoker	0.41 (0.49)	0.42 (0.49)	-0.01
Prior revascularization	0.65 (0.48)	0.64 (0.48)	0.02
End-stage renal disease on dialysis	0.09 (0.29)	0.09 (0.28)	0.01
Pulmonary hypertension	0.22 (0.42)	0.22 (0.41)	0.01
Preexisting atrial fibrillation	0.36 (0.48)	0.36 (0.48)	0.01
Prior permanent pacemaker	0.12 (0.33)	0.12 (0.32)	0.02
Prior intracardiac defibrillator	0.06 (0.23)	0.05 (0.23)	0.01
Rheumatoid arthritis/connective tissue disease	0.07 (0.25)	0.06 (0.24)	0.01
Underweight	0.01 (0.09)	0.01 (0.09)	0.01
Obese	0.27 (0.44)	0.26 (0.44)	0.01
History of Coagulopathy	0.22 (0.42)	0.22 (0.41)	0.01
Depression	0.17 (0.38)	0.16 (0.37)	0.02
Drug abuse	0.01 (0.09)	0.01 (0.10)	-0.02
Lymphoma	0.02 (0.13)	0.02 (0.13)	-0.01
Fluid and electrolyte disorders	0.48 (0.50)	0.47 (0.50)	0.02
Metastatic cancer	0.01 (0.08)	0.01 (0.07)	0.02

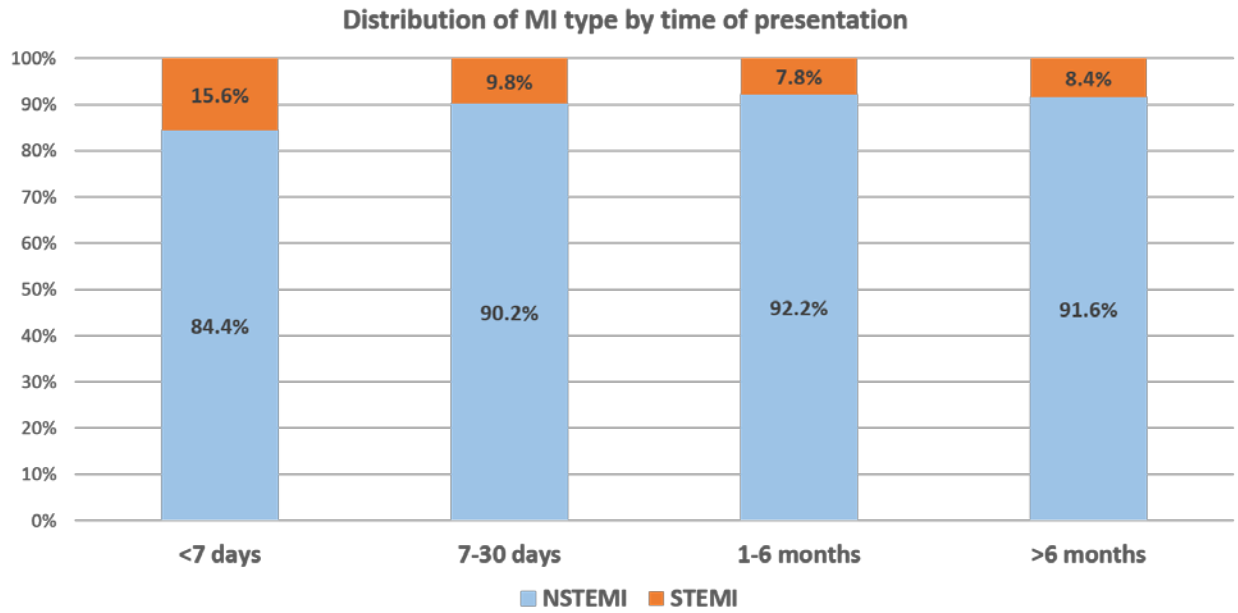


Solid tumor without metastasis	0.05 (0.21)	0.05 (0.22)	-0.01
Obesity	0.31 (0.46)	0.30 (0.46)	0.02
History of paralysis	0.04 (0.21)	0.04 (0.21)	0.00
Psychoses	0.03 (0.16)	0.03 (0.17)	-0.02
Weight loss	0.07 (0.26)	0.07 (0.25)	0.02
Apical access for TAVR	0.14 (0.34)	0.14 (0.35)	-0.01
Valve-in-TAVR	0.01 (0.11)	0.01 (0.11)	-0.01

\* Standardized difference <0.1 is considered to be well balanced

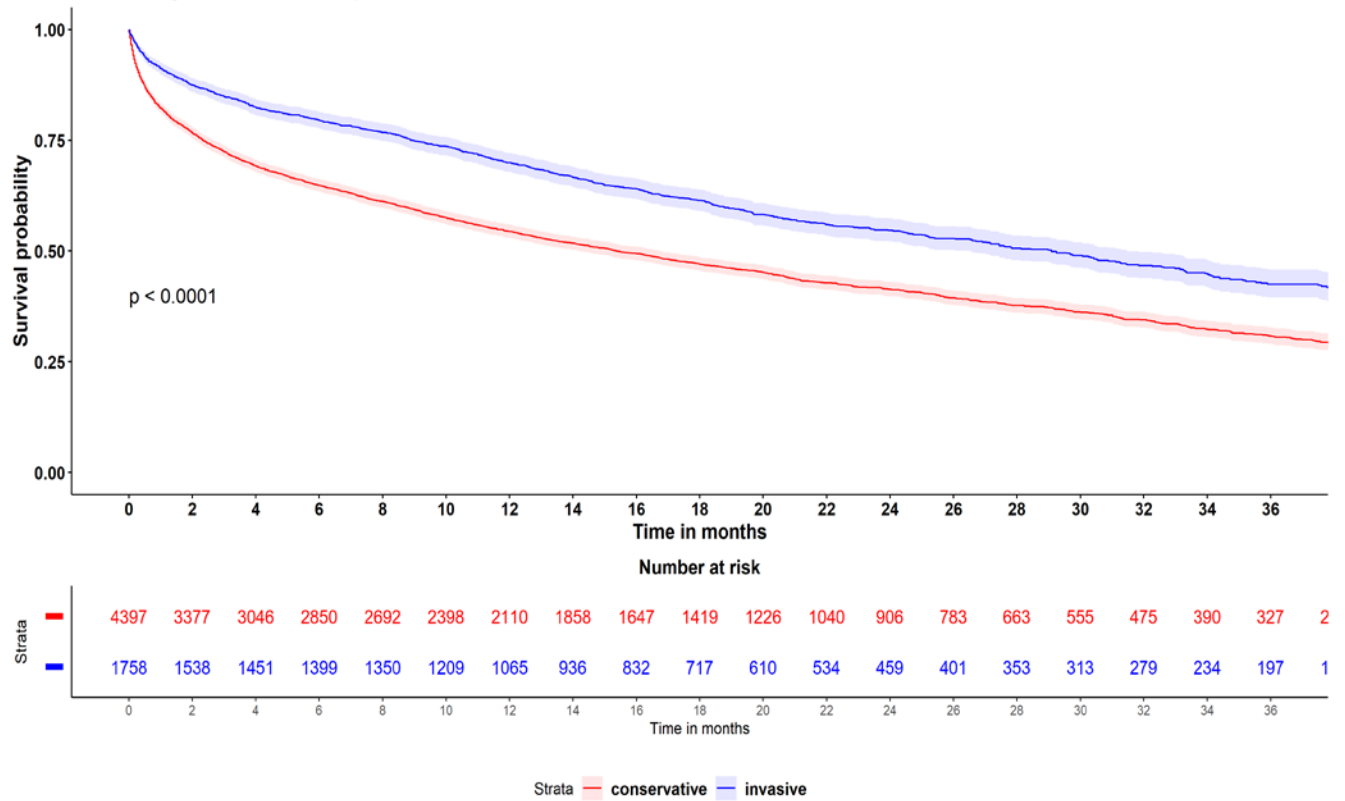


**Supplemental Figure 1:** Flow chart of the study population.

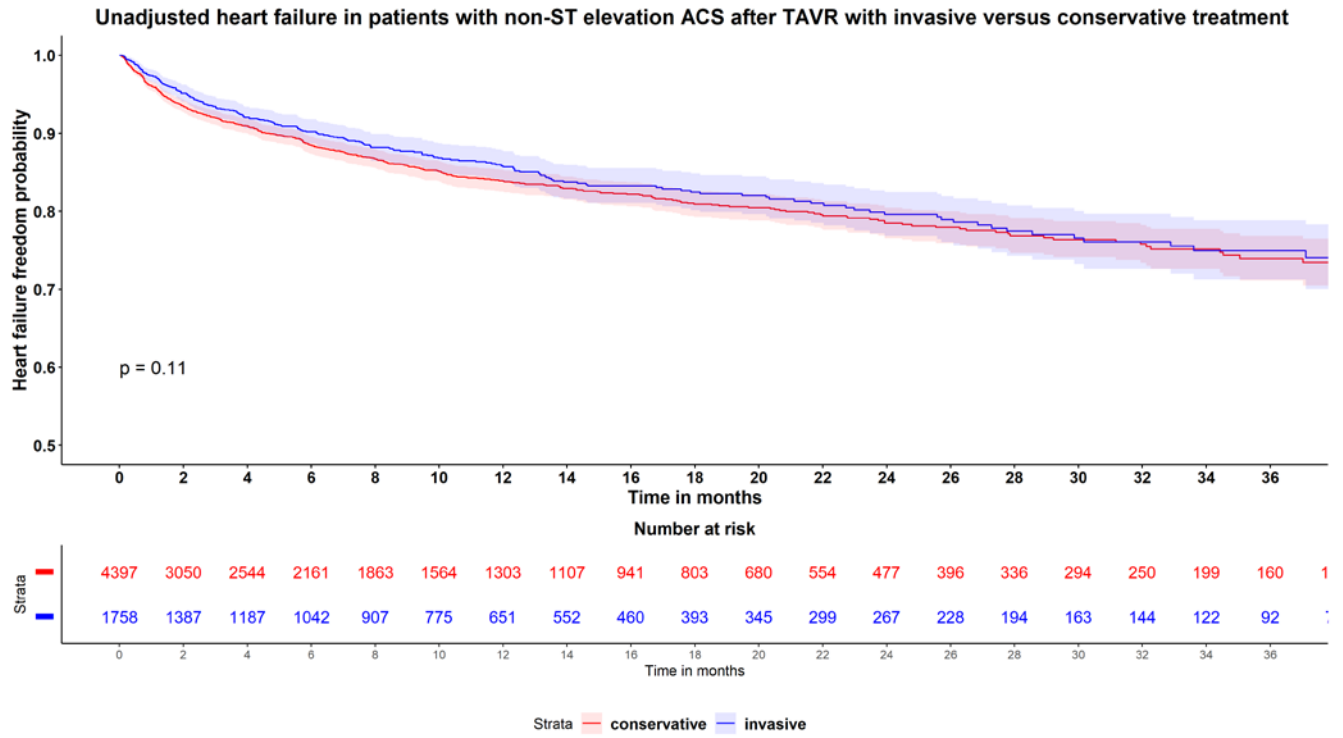


**Supplemental Figure 2:** Distribution of types of myocardial infarction by timing of presentation

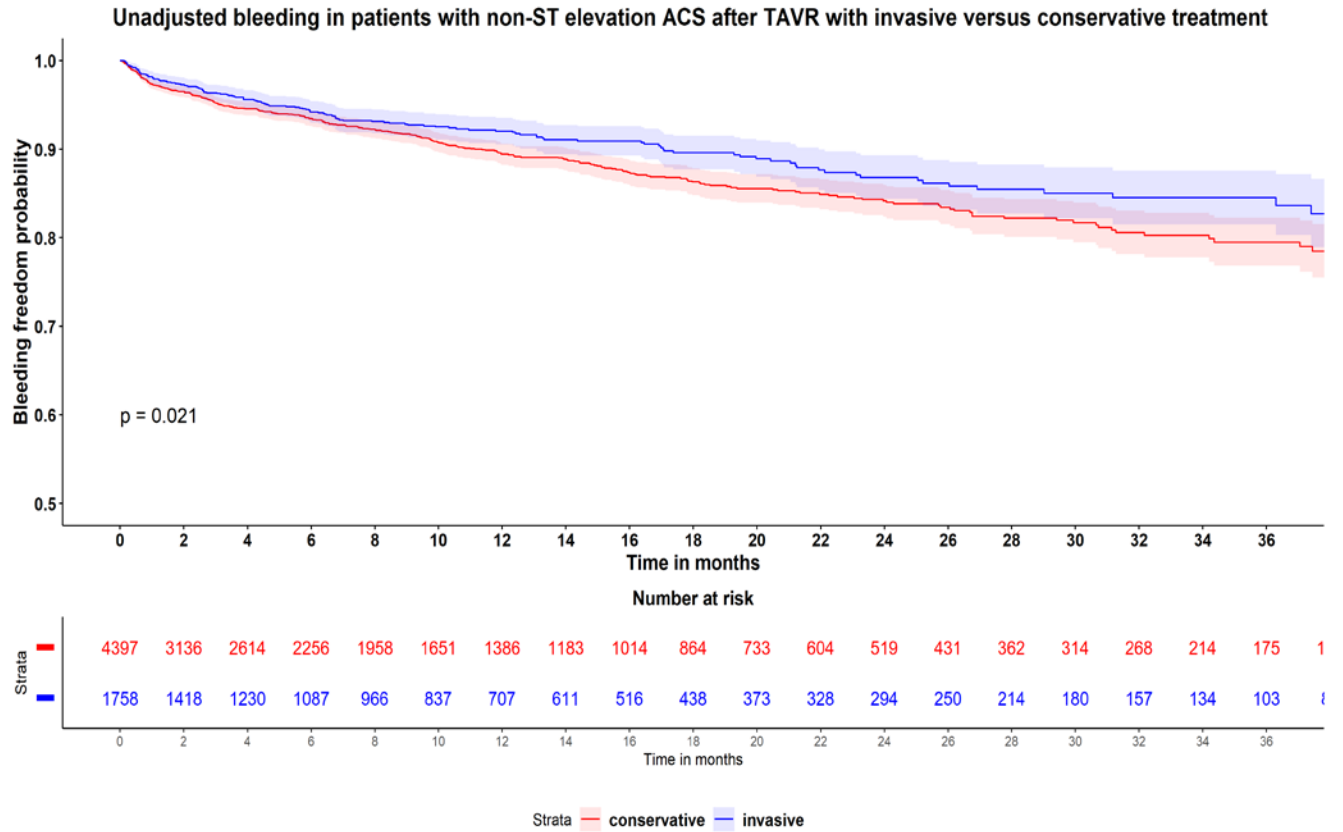
**Unadjusted survival in patients with non-ST elevation ACS after TAVR with invasive versus conservative treatment**



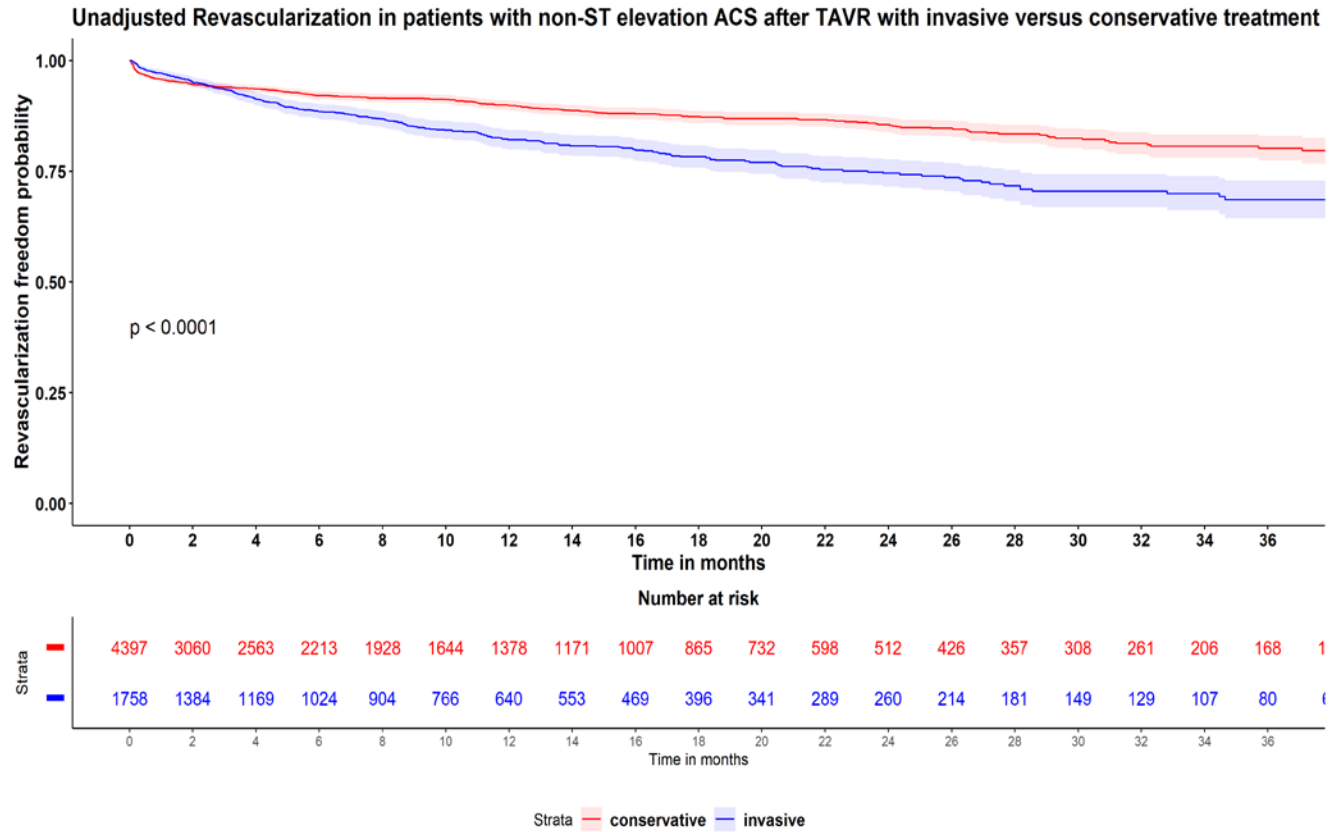
**Supplemental Figure 3A:** Unadjusted Kaplan Meier curves of survival with invasive versus conservative approach in patients presenting with non-ST elevation acute coronary syndrome after TAVR



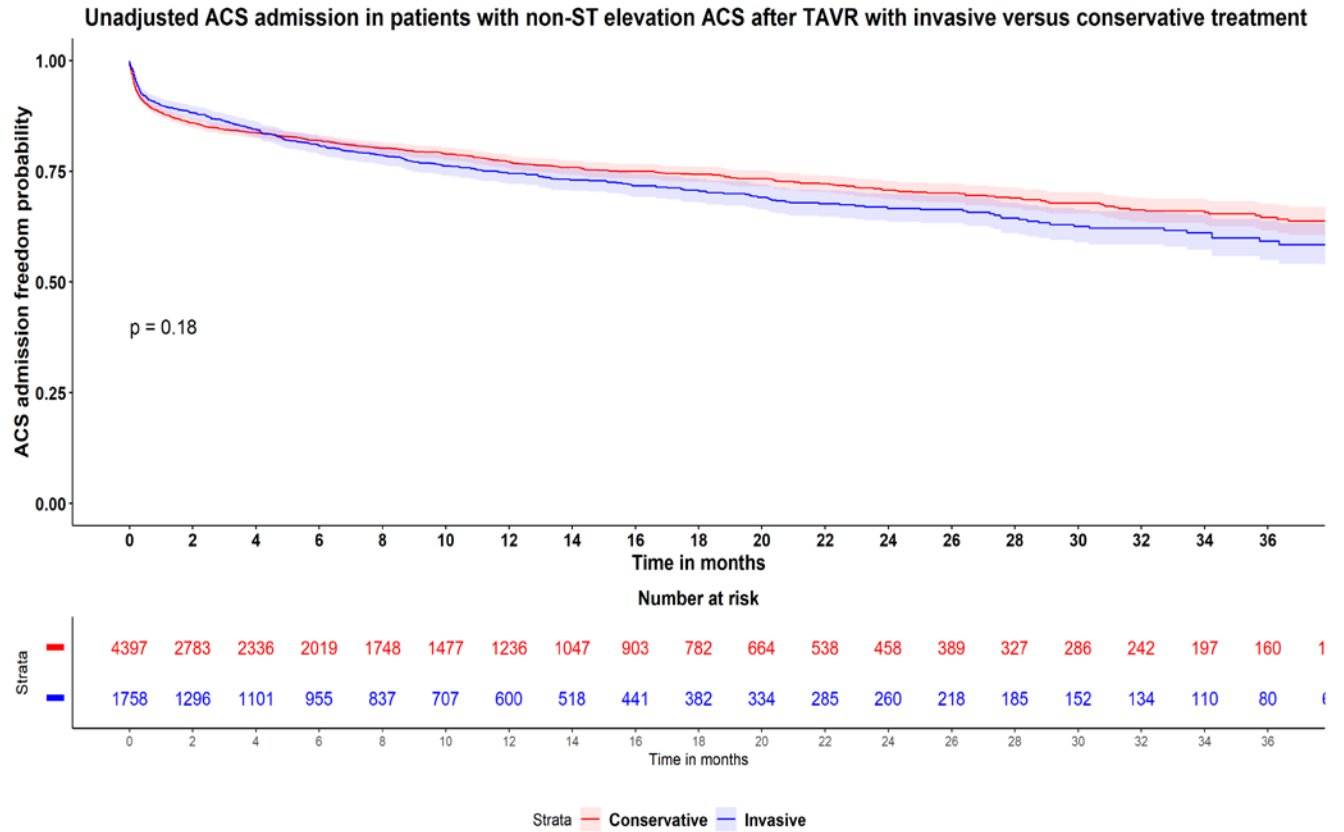
**Supplemental Figure 3B:** Unadjusted Kaplan Meier curves of heart failure with invasive versus conservative approach in patients presenting with non-ST elevation acute coronary syndrome after TAVR



**Supplemental Figure 3C:** Unadjusted Kaplan Meier curves of bleeding with invasive versus conservative approach in patients presenting with non-ST elevation acute coronary syndrome after TAVR



**Supplemental Figure 3D:** Unadjusted Kaplan Meier curves of need for revascularization with invasive versus conservative approach in patients presenting with non-ST elevation acute coronary syndrome after TAVR



**Supplemental Figure 3E:** Unadjusted Kaplan Meier curves of ACS readmission with invasive versus conservative approach in patients presenting with non-ST elevation acute coronary syndrome after TAVR