

Supplemental Data

Discovery of Plasma Biomarkers for Predicting the Severity of Coronary Artery Atherosclerosis by Quantitative Proteomics

Eu Jeong Ku*, Kyung-Cho Cho*, Cheong Lim, Jeong Won Kang, Jae Won Oh, Yu Ri Choi, Jong-Moon Park, Na-Young Han, Jong Jin Oh, Tae Jung Oh, Hak Chul Jang, Hookeun Lee[†], Kwang Pyo Kim[†], Sung Hee Choi[†]

* E.J.K. and K.C.C contributed equally to this work.

Contents

Table S1. Clinical characteristics of the subjects for the discovery cohort ($n = 18$)

Table S2. Baseline characteristics of the subjects for verification cohort ($n = 53$)

Table S3. List of identified proteins

Table S4. List of differentially expressed proteins (DEPs) obtained from the TMT quantitative analysis of patients without diabetes

Table S5. List of differentially expressed proteins (DEPs) obtained from the TMT quantitative analysis of patients with diabetes

Table S6. Transition list for the selected reaction monitoring analysis (SRM) in verification cohort

Table S7. Information list of transition and elute time for the selected reaction monitoring analysis (SRM) in validation cohort

Figure S1. Quantification of candidate biomarkers via label-free multiple reaction monitoring (MRM) analysis for verification of differentially expressed proteins

Figure S2. Validation of the selected biomarkers of coronary artery stenosis via multiple reaction monitoring (MRM) analysis with isotopically labeled peptides

Table S1. Clinical characteristics of the subjects for the discovery cohort ($n = 18$)

	Normal ($n = 6$)	Mild-to-moderate stenosis ($n = 6$)	Severe stenosis ($n = 6$)	<i>P</i> value
Age (years)	55.2 ± 8.4	54.8 ± 13.7	47.3 ± 20.4	0.801
Male (%)	6 (100)	6 (100)	6 (100)	
BMI (kg/m ²)	27.5 ± 2.9	24.5 ± 1.9	24.8 ± 1.5	0.248
Systolic blood pressure (mmHg)	120.1 ± 8.8	127.0 ± 12.7	117.0 ± 25.5	0.439
HbA1c (%)	5.6 ± 0.6	6.1 ± 0.6	5.9 ± 0.7	0.341
Total cholesterol (mg/dL)	187.3 ± 39.3	214.0 ± 35.5	202.4 ± 44.7	0.620
Triglyceride (mg/dL)	128.3 ± 29.8	125.5 ± 45.7	151.2 ± 55.5	0.586
HDL-C (mg/dL)	50.5 ± 15.3	59.7 ± 15.8	58.0 ± 7.6	0.141
LDL-C (mg/dL)	101.5 ± 31.2	112.2 ± 20.4	102.6 ± 38.8	0.823
AST (IU/L)	22.2 ± 4.0	26.7 ± 10.5	23.5 ± 2.4	0.807
ALT (IU/L)	25.5 ± 5.8	32.8 ± 18.0	24.8 ± 9.3	0.469
MDRD GFR (mL/min/1.73m ²)	73.2 ± 7.4	75.8 ± 15.9	76.4 ± 7.6	0.862

Data are presented as the mean ± SD. BMI, body mass index; HDL-C, high density lipoprotein cholesterol; LDL-C, low density lipoprotein cholesterol; MDRD GFR, Modification of Diet in Renal Disease glomerular filtration rate; hsCRP, high-sensitivity C reactive protein. hsCRP was analyzed by log-transformation.

Table S2. Baseline characteristics of the subjects for verification cohort ($n = 53$)

	Normal ($n = 19$)	Mild-to-moderate stenosis ($n = 21$)	Severe stenosis ($n = 13$)	<i>P</i> value
Age (years)	51.2 ± 7.7	53.5 ± 10.5	59.1 ± 10.5	0.172
Male (%)	11 (57.9)	17 (81.0)	9 (69.2)	0.284
BMI (kg/m ²)	24.4 ± 2.7	26.3 ± 4.1	24.9 ± 1.5	0.264
Systolic blood pressure (mmHg)	121.0 ± 4.4	129.8 ± 15.8	123.4 ± 13.5	0.527
HbA1c (%)	5.7 ± 0.7	5.8 ± 0.5	6.0 ± 0.6	0.472
Total cholesterol (mg/dL)	192.5 ± 35.8	208.5 ± 28.6	199.6 ± 46.6	0.416
Triglyceride (mg/dL)	124.4 ± 101.9	137.2 ± 53.0	140.6 ± 44.6	0.834
HDL-C (mg/dL)	56.3 ± 14.7	57.1 ± 14.2	56.7 ± 9.7	0.985
LDL-C (mg/dL)	99.6 ± 26.8	110.6 ± 19.6	108.1 ± 32.8	0.434
AST (IU/L)	26.2 ± 8.5	24.1 ± 7.2	22.3 ± 2.1	0.425
ALT (IU/L)	28.7 ± 13.1	24.3 ± 13.7	22.4 ± 8.3	0.441
MDRD GFR (mL/min/1.73m ²)	72.4 ± 7.9	79.0 ± 15.0	76.6 ± 8.5	0.253

Data are presented as the mean ± SD. BMI, body mass index; HDL-C, high density lipoprotein cholesterol; LDL-C, low density lipoprotein cholesterol; MDRD GFR, Modification of Diet in Renal Disease glomerular filtration rate; hsCRP, high-sensitivity C reactive protein. hsCRP was analyzed by log-transformation.

Table S3. List of identified proteins

Protein	Gene	Protein identification Probability, %		Exclusive unique peptide count		Exclusive unique spectrum count		Exclusive spectrum count		Percentage sequence coverage, %	
		1st	2nd	1st	2nd	1st	2nd	1st	2nd	1st	2nd
Isoform 4 of Probable helicase senataxin	SETX	100.0	100.0	2	2	2	2	2	2	0.8	0.6
Isoform 2 of Inter-alpha-trypsin inhibitor heavy chain H3	ITIH3	100.0	100.0	10	9	18	18	34	41	16.6	14.7
Profilin-1	PFN1	100.0	100.0	7	6	8	11	10	17	59.3	49.3
Transforming acidic coiled-coil-containing protein 2	TACC2	100.0	NA	2	NA	2	NA	2	NA	0.0	NA
Transformation/transcription domain-associated protein	TRRAP	100.0	100.0	2	3	2	3	2	3	0.0	0.0
Platelet glycoprotein V	GP5	100.0	100.0	6	6	7	7	13	12	12.9	12.9
Afamin	AFM	100.0	100.0	26	25	51	48	255	238	45.9	45.4
Isoform 2 of Cordon-bleu protein-like 1	COBLL1	100.0	100.0	2	3	2	3	2	4	3.8	5.0
Testis-expressed sequence 15 protein	TEX15	100.0	NA	3	NA	3	NA	3	NA	1.7	NA
Isoform 2 of Rho GTPase-activating protein 20	ARHGAP20	100.0	NA	2	NA	2	NA	2	NA	1.6	NA
Antithrombin-III	SERPINC1	100.0	100.0	26	28	68	70	1037	907	53.7	54.3
E3 ubiquitin-protein ligase MARCH4	MARCH4	100.0	NA	2	NA	2	NA	2	NA	0.0	NA
Keratin, type I cytoskeletal 14	KRT14	100.0	100.0	16	18	22	20	32	28	37.9	43.6
Exocyst complex component 8	EXOC8	100.0	NA	2	NA	2	NA	2	NA	3.2	NA
Serine/threonine-protein kinase TAO1	TAOK1	100.0	NA	2	NA	2	NA	3	NA	0.0	NA
Isoform 2 of Leucine-rich repeat-containing protein 16A	LRRC16A	100.0	NA	2	NA	2	NA	2	NA	0.0	NA
Dystonin	DST	100.0	NA	3	NA	3	NA	4	NA	0.4	NA

Pigment epithelium-derived factor	SERPINF1	100.0	100.0	14	14	28	30	134	133	37.6	37.6
Galectin-3-binding protein	LGALS3BP	100.0	100.0	13	13	17	15	40	33	26.7	29.6
Plastin-2	LCP1	100.0	100.0	13	13	14	15	15	18	27.9	27.4
Chromodomain-helicase-DNA-binding protein 3	CHD3	100.0	100.0	2	2	2	2	2	2	0.0	0.0
Synaptojanin-1	SYNJ1	100.0	100.0	3	2	3	2	3	2	2.2	1.6
Isoform 2 of Protein FAM134B	FAM134B	99.9	99.9	2	2	2	2	3	3	6.5	6.5
Probable phospholipid-transporting ATPase VD	ATP10D	100.0	NA	3	NA	3	NA	3	NA	2.6	NA
Protein diaphanous homolog 1	DIAPH1	100.0	NA	2	NA	2	NA	2	NA	0.0	NA
Nidogen-1	NID1	100.0	100.0	2	2	2	2	2	2	0.0	2.0
Isoform 4 of Mannan-binding lectin serine protease 1	MASP1	100.0	100.0	4	3	5	4	11	8	24.6	21.2
NEO1 protein	NEO1	100.0	100.0	2	2	2	3	3	3	2.5	2.0
DNA (cytosine-5)-methyltransferase 3A	DNMT3A	100.0	NA	2	NA	2	NA	2	NA	0.0	NA
Isoform 2 of Leucine-rich repeats and immunoglobulin-like domains protein 3	LRIG3	100.0	NA	2	NA	2	NA	2	NA	2.5	NA
Complement factor D	CFD	100.0	100.0	7	7	9	8	16	14	45.8	45.8
PDZ domain-containing protein 2	PDZD2	100.0	NA	2	NA	2	NA	2	NA	0.9	NA
Isoform 2 of DNA helicase MCM8	MCM8	100.0	NA	2	NA	2	NA	3	NA	3.0	NA
Protein Daple	CCDC88C	100.0	100.0	3	2	3	2	3	2	0.0	0.8
Unconventional myosin-XVIIIa	MYO18A	100.0	NA	2	NA	2	NA	2	NA	0.0	NA
PRAME family member 16	PRAMEF16	100.0	100.0	3	2	3	2	3	2	8.0	5.5
Isoform 2 of Apolipoprotein L1	APOL1	100.0	100.0	10	11	13	15	26	28	20.5	31.4
Isoform 2 of Putative RNA-binding protein 15	RBM15	100.0	NA	2	NA	2	NA	25	NA	3.3	NA

Phosducin-like protein	PDCL	100.0	NA	2	NA	2	NA	2	NA	9.6	NA
Proteasome activator complex subunit 4	PSME4	100.0	NA	4	NA	4	NA	4	NA	3.0	NA
Integrin beta-2	ITGB2	100.0	NA	2	NA	2	NA	2	NA	5.3	NA
Isoform 10 of ARF GTPase-activating protein GIT2	GIT2	100.0	100.0	2	2	2	2	4	2	2.8	2.9
Liprin-alpha-2	PPFIA2	100.0	100.0	2	2	2	2	3	2	0.0	0.0
Low-density lipoprotein receptor (Fragment)	LDLR	99.9	NA	2	NA	2	NA	2	NA	2.5	NA
Transthyretin	TTR	100.0	100.0	7	7	18	17	598	575	68.7	68.7
Isoform 4 of Clusterin	CLU	100.0	100.0	19	19	34	32	204	199	42.3	35.1
Teneurin-3	TENM3	100.0	NA	3	NA	3	NA	4	NA	0.0	NA
Thrombospondin type-1 domain-containing protein 4	THSD4	100.0	NA	2	NA	2	NA	2	NA	0.0	NA
Unconventional myosin-XVIIIb	MYO18B	100.0	NA	2	NA	2	NA	3	NA	0.0	NA
Differentially expressed in FDCP 6 homolog	DEF6	100.0	NA	2	NA	2	NA	2	NA	0.0	NA
Ras-related protein Rab-3A	RAB3A	100.0	100.0	2	2	2	2	3	5	0.0	10.9
Multiple PDZ domain protein	MPDZ	100.0	NA	3	NA	3	NA	3	NA	1.4	NA
Keratin, type I cytoskeletal 17	KRT17	100.0	100.0	2	6	2	6	2	6	24.5	35.2
CD5 antigen-like	CD5L	100.0	100.0	3	3	3	3	5	6	9.8	12.1
Isoform 4 of Protein unc-80 homolog	UNC80	100.0	NA	2	NA	2	NA	2	NA	0.0	NA
Rho GTPase-activating protein 10	ARHGAP10	99.9	NA	2	NA	2	NA	2	NA	4.1	NA
Unconventional myosin-Va	MYO5A	100.0	NA	2	NA	2	NA	2	NA	2.1	NA

DNA mismatch repair protein Msh2	MSH2	100.0	NA	2	NA	2	NA	2	NA	0.0	NA
Vitamin K-dependent protein S	PROS1	100.0	100.0	19	17	26	25	65	60	34.8	34.3
ADNP homeobox protein 2	ADNP2	100.0	NA	2	NA	2	NA	3	NA	0.0	NA
Sestrin-1	SESN1	100.0	NA	2	NA	2	NA	2	NA	6.3	NA
Isoform 3 of Deducator of cytokinesis protein 9	DOCK9	100.0	100.0	2	2	2	2	2	2	0.0	1.6
Neurogenic locus notch homolog protein 2	NOTCH2	100.0	NA	2	NA	2	NA	2	NA	1.3	NA
Tenascin-X	TNXB	100.0	100.0	3	6	3	6	3	8	0.0	2.1
Ceruloplasmin	CP	100.0	100.0	46	45	105	104	758	731	50.1	45.7
Isoform 3 of Transmembrane protein 209	TMEM209	100.0	NA	2	NA	3	NA	4	NA	9.3	NA
Nicotinate phosphoribosyltransferase	NAPRT1	99.9	NA	2	NA	2	NA	2	NA	4.9	NA
TBC1 domain family member 12	TBC1D12	100.0	NA	2	NA	2	NA	3	NA	2.8	NA
Isoform 4 of Inactive ubiquitin carboxyl-terminal hydrolase 54	USP54	100.0	100.0	2	2	2	2	2	2	0.0	1.5
Serotransferrin	TF	100.0	100.0	11	10	11	10	13	11	20.2	18.1
Isoform 2 of Protein prune homolog 2	PRUNE2	100.0	NA	2	NA	2	NA	2	NA	0.0	NA
C4b-binding protein alpha chain	C4BPA	100.0	100.0	21	21	34	35	106	110	46.6	46.6
XK-related protein 7	XKR7	100.0	NA	2	NA	2	NA	3	NA	6.6	NA
Heparin cofactor 2	SERPIND1	100.0	100.0	14	13	25	25	132	141	32.5	32.1
FERM and PDZ domain-containing protein 4	FRMPD4	100.0	100.0	3	2	3	2	3	2	3.2	1.7
Transient receptor potential cation channel subfamily V member 5	TRPV5	100.0	NA	2	NA	2	NA	3	NA	0.0	NA

Corticosteroid-binding globulin	SERPINA6	100.0	100.0	6	6	10	10	29	35	16.8	16.8
Fibrillin-3	FBN3	100.0	100.0	4	2	4	2	5	4	0.0	0.0
Keratin, type II cytoskeletal 1b	KRT77	100.0	100.0	2	4	2	4	2	4	6.9	12.5
Keratin, type I cytoskeletal 10	KRT10	100.0	100.0	28	29	53	53	187	195	52.6	49.5
Ig gamma-3 chain C region	IGHG3	100.0	100.0	3	4	4	5	5	5	8.0	13.3
Phosphatidylinositol-glycan-specific phospholipase D	GPLD1	100.0	100.0	15	18	20	23	40	47	23.2	26.2
Isoform 3 of Zinc finger protein 462	ZNF462	100.0	100.0	2	2	2	2	7	6	0.0	0.0
Hepatocyte growth factor-like protein alpha chain	MST1	100.0	100.0	11	12	14	14	24	22	18.2	21.0
Isoform H7 of Myeloperoxidase	MPO	100.0	100.0	3	5	3	5	3	5	5.4	10.6
Isoform 2 of Tropomyosin alpha-4 chain	TPM4	100.0	100.0	2	3	2	3	2	5	10.2	12.5
DENN domain-containing protein 4C	DENND4C	100.0	100.0	2	3	2	3	2	5	0.0	0.0
Isoform 3 of Calcium-binding mitochondrial carrier protein SCaMC-3	SLC25A23	100.0	NA	2	NA	2	NA	2	NA	4.4	NA
Mucin-16	MUC16	100.0	100.0	3	3	3	4	13	16	0.0	0.0
Isoform 3 of Myosin-10	MYH10	100.0	NA	2	NA	2	NA	3	NA	1.6	NA
Protein FAM83B	FAM83B	100.0	NA	2	NA	2	NA	5	NA	0.0	NA
Serum paraoxonase/lactonase 3	PON3	100.0	100.0	3	3	3	3	3	4	12.7	12.1
Eukaryotic translation initiation factor 4 gamma 1	EIF4G1	100.0	NA	2	NA	2	NA	2	NA	1.8	NA
Leucine-rich repeat-containing protein 8E	LRRC8E	100.0	100.0	2	2	2	2	2	3	6.3	0.0
Ankyrin-2	ANK2	100.0	NA	2	NA	2	NA	2	NA	0.0	NA
Protein S100-A9	S100A9	100.0	100.0	7	5	9	7	27	24	81.6	50.0
Isoform 2 of Multiple epidermal growth factor-like domains protein 8	MEGF8	100.0	NA	2	NA	2	NA	2	NA	1.2	NA

Arf-GAP with GTPase, ANK repeat and PH domain-containing protein 2	AGAP2	100.0	100.0	2	2	2	2	3	3	1.6	1.3
Protein-methionine sulfoxide oxidase MICAL3	MICAL3	100.0	NA	3	NA	3	NA	3	NA	0.0	NA
Lipopolysaccharide-binding protein	LBP	100.0	100.0	8	8	14	13	58	54	19.8	19.8
Apolipoprotein A-II	APOA2	100.0	100.0	8	8	19	20	281	275	47.0	47.0
Isoform 2 of RAC-gamma serine/threonine-protein kinase	AKT3	100.0	NA	2	NA	2	NA	3	NA	0.0	NA
CDP-diacylglycerol--glycerol-3-phosphate 3-phosphatidyltransferase, mitochondrial (Fragment)	PGS1	100.0	NA	2	NA	2	NA	2	NA	4.9	NA
Cadherin 1, type 1, E-cadherin (Epithelial), isoform CRA_c	CDH1	100.0	NA	2	NA	2	NA	2	NA	0.0	NA
Dynein heavy chain 8, axonemal	DNAH8	100.0	100.0	2	2	2	2	3	3	0.0	0.0
Structure-specific endonuclease subunit SLX4	SLX4	100.0	NA	2	NA	2	NA	2	NA	0.0	NA
Transcriptional repressor NF-X1	NFX1	100.0	100.0	3	2	3	2	4	4	3.6	2.1
Transient receptor potential cation channel subfamily M member 6	TRPM6	100.0	NA	3	NA	3	NA	3	NA	0.0	NA
Cohesin subunit SA-1	STAG1	100.0	NA	2	NA	2	NA	2	NA	1.6	NA
Isoform 2 of Nebulin-related-anchoring protein	NRAP	100.0	100.0	2	2	2	2	2	2	0.0	1.5
Glutamate receptor 4	GRIA4	100.0	NA	2	NA	2	NA	2	NA	0.0	NA
Pleckstrin homology domain-containing family A member 6	PLEKHA6	100.0	NA	2	NA	2	NA	7	NA	0.0	NA
Apolipoprotein D	APOD	100.0	100.0	6	6	13	13	47	46	31.2	31.2
Methyltransferase-like protein 25	METTL25	100.0	NA	2	NA	2	NA	2	NA	4.3	NA
Isoform 5 of Centriolin	CNTRL	100.0	100.0	2	2	2	2	2	2	0.0	0.0

Isoform 2 of A disintegrin and metalloproteinase with thrombospondin motifs 13	ADAMTS13	100.0	100.0	2	5	2	5	4	6	1.7	5.0
Plexin-A2	PLXNA2	100.0	100.0	2	2	2	2	3	2	1.7	1.9
Isoform 2 of KN motif and ankyrin repeat domain-containing protein 1	KANK1	100.0	100.0	2	2	2	2	2	3	0.0	0.0
Coagulation factor X	F10	100.0	100.0	12	13	16	18	27	35	27.0	27.0
Endothelial protein C receptor	PROCR	100.0	100.0	2	2	2	2	2	2	7.1	7.1
Transketolase	TKT	100.0	100.0	3	2	3	2	3	3	6.9	5.4
Isoform 3 of Eukaryotic translation initiation factor 4 gamma 3	EIF4G3	100.0	NA	3	NA	3	NA	3	NA	2.1	NA
Nucleoprotein TPR	TPR	100.0	100.0	2	2	2	2	2	2	0.0	0.9
Neural cell adhesion molecule 1	NCAM1	100.0	100.0	3	2	4	2	4	3	7.4	2.5
Ficolin-2	FCN2	100.0	100.0	4	4	5	5	7	5	17.6	17.6
Gelsolin	GSN	100.0	100.0	29	29	48	44	227	232	47.1	47.4
Complement C4-B	C4B	100.0	100.0	69	70	141	146	1011	961	49.3	49.8
Protein AMBP	AMBP	100.0	100.0	12	12	25	25	173	165	43.5	43.5
Transforming growth factor beta-1	TGFB1	100.0	NA	2	NA	2	NA	2	NA	0.0	NA
Putative methyltransferase NSUN6	NSUN6	100.0	NA	2	NA	2	NA	2	NA	3.0	NA
Isoform A of GDP-fucose protein O-fucosyltransferase 2	POFUT2	100.0	NA	2	NA	2	NA	2	NA	5.7	NA
Nesprin-2	SYNE2	100.0	100.0	3	4	3	4	3	5	0.0	0.0
Complement C4-A	C4A	100.0	100.0	4	4	7	6	28	29	49.3	49.8
Macrophage colony-stimulating factor 1 receptor	CSF1R	100.0	100.0	2	2	3	3	9	6	3.1	3.1
Isoform 2 of Protein SOGA1	SOGA1	100.0	100.0	2	2	2	2	3	3	0.0	0.0
Retinol-binding protein 4	RBP4	100.0	100.0	10	11	25	27	383	306	71.6	79.1
Mitogen-activated protein kinase-binding protein 1	MAPKBP1	100.0	100.0	2	2	3	2	5	6	1.2	1.3

Isoform 2 of Vitamin K-dependent protein Z	PROZ	100.0	100.0	6	6	6	6	11	11	13.5	13.5
Isoform 2 of Neurochondrin	NCDN	100.0	NA	2	NA	2	NA	2	NA	2.4	NA
Thyroxine-binding globulin	SERPINA7	100.0	100.0	13	13	24	24	64	65	36.4	40.7
Cholinesterase	BCHE	100.0	100.0	11	11	16	15	26	26	25.1	25.1
Probable cation-transporting ATPase 13A5	ATP13A5	100.0	NA	2	NA	2	NA	2	NA	3.7	NA
Coiled-coil domain-containing protein 164	CCDC164	100.0	NA	2	NA	2	NA	2	NA	0.0	NA
Peptidyl-prolyl cis-trans isomerase G	PPIG	100.0	NA	2	NA	2	NA	4	NA	3.9	NA
Isoform 2 of CaiB/baiF CoA-transferase family protein C7orf10	C7orf10	100.0	NA	2	NA	2	NA	4	NA	0.0	NA
Protocadherin-16	DCHS1	100.0	NA	2	NA	2	NA	2	NA	0.9	NA
Protein Shroom2	SHROOM2	100.0	100.0	2	2	2	2	2	2	1.4	1.4
Sulfide:quinone oxidoreductase, mitochondrial	SQRDL	100.0	NA	2	NA	2	NA	2	NA	5.1	NA
Pyruvate carboxylase, mitochondrial	PC	100.0	NA	2	NA	2	NA	2	NA	0.0	NA
Complement component C8 beta chain	C8B	100.0	100.0	23	22	35	34	143	124	46.4	44.8
Laminin subunit alpha-5	LAMA5	100.0	NA	3	NA	3	NA	3	NA	0.0	NA
Isoform 4 of Phosphatidylinositol 3-kinase regulatory subunit alpha	PIK3R1	99.9	NA	2	NA	2	NA	3	NA	0.0	NA
Apolipoprotein C-I	APOC1	100.0	100.0	5	5	6	6	17	16	37.3	37.3
Isoform 3 of Rho GTPase-activating protein 30	ARHGAP30	100.0	NA	2	NA	2	NA	2	NA	3.0	NA
G-protein coupled receptor-associated sorting protein 1	GPRASP1	100.0	100.0	3	2	3	2	4	2	3.0	2.6

Dynein heavy chain 12, axonemal	DNAH12	100.0	NA	3	NA	3	NA	3	NA	1.6	NA
Apolipoprotein E	APOE	100.0	100.0	20	21	37	35	134	130	58.4	61.8
Isoform 2 of Ectonucleotide pyrophosphatase/phosphodiesterase family member 2	ENPP2	100.0	100.0	3	3	4	3	6	3	3.5	3.6
Clustered mitochondria protein homolog	CLUH	100.0	NA	2	NA	2	NA	3	NA	2.1	NA
Isoform 2 of DDB1- and CUL4-associated factor 6	DCAF6	100.0	NA	2	NA	2	NA	2	NA	2.2	NA
Vitamin D-binding protein	GC	100.0	100.0	32	32	74	72	505	561	72.0	72.0
RAS protein activator like-3	RASAL3	100.0	NA	2	NA	2	NA	2	NA	0.0	NA
Terminal uridylyltransferase 7	ZCCHC6	100.0	100.0	2	2	2	2	2	3	1.1	1.1
Uncharacterized protein C12orf55	C12orf55	100.0	NA	4	NA	4	NA	4	NA	1.8	NA
Isoform 2 of Peripheral-type benzodiazepine receptor-associated protein 1	BZRAP1	100.0	NA	2	NA	2	NA	2	NA	2.1	NA
Zinc-alpha-2-glycoprotein	AZGP1	100.0	100.0	15	15	34	34	151	135	53.0	53.0
Protein FAM3B	FAM3B	100.0	NA	2	NA	2	NA	2	NA	14.0	NA
Dopamine beta-hydroxylase	DBH	100.0	100.0	3	4	5	5	9	8	6.8	10.2
Di-N-acetylchitinase	CTBS	100.0	100.0	3	2	3	2	3	3	6.2	5.5
Tyrosine-protein kinase Fgr	FGR	100.0	NA	2	NA	2	NA	2	NA	4.5	NA
Nestin	NES	100.0	100.0	3	3	3	3	7	6	1.6	1.7
Isoform 2 of Serine/arginine repetitive matrix protein 1	SRRM1	100.0	NA	2	NA	2	NA	3	NA	2.8	NA
Low affinity immunoglobulin gamma Fc region receptor III-B	FCGR3B	100.0	100.0	3	3	3	3	3	4	11.6	11.6
ZAR1-like protein	ZAR1L	100.0	NA	2		2		2	NA	8.4	NA

					NA		NA				
Keratin, type II cuticular Hb2	KRT82	100.0	100.0	2	4	2	5	3	5	5.9	14.4
Isoform 10 of Collectin-11	COLEC11	100.0	NA	2	NA	2	NA	3	NA	8.8	NA
Procollagen C-endopeptidase enhancer 1	PCOLCE	100.0	100.0	4	4	4	4	6	6	12.5	11.1
Isoform 2 of Thioredoxin	TXN	100.0	100.0	2	2	2	2	2	2	12.9	21.2
Actin, cytoplasmic 1	ACTB	100.0	100.0	12	11	18	20	36	40	48.5	42.4
Uveal autoantigen with coiled-coil domains and ankyrin repeats	UACA	100.0	100.0	3	2	4	2	13	3	0.0	1.6
Alpha-N-acetylgalactosaminide alpha-2,6-sialyltransferase 1	ST6GALNAC1	100.0	NA	2	NA	3	NA	3	NA	0.0	NA
Envoplakin	EVPL	100.0	100.0	2	2	2	2	2	2	0.9	1.3
Apolipoprotein M	APOM	100.0	100.0	6	6	9	11	31	36	36.7	36.7
Spectrin beta chain, non-erythrocytic 1	SPTBN1	100.0	100.0	2	2	2	2	2	2	1.1	1.7
Cytoplasmic dynein 2 heavy chain 1	DYNC2H1	100.0	100.0	4	2	4	2	4	3	1.4	0.7
Mothers against decapentaplegic homolog 7	SMAD7	100.0	NA	2	NA	2	NA	2	NA	4.5	NA
Putative Polycomb group protein ASXL3	ASXL3	100.0	100.0	2	2	2	2	4	4	0.0	0.0
Isoform 2 of A-kinase anchor protein 9	AKAP9	100.0	100.0	2	4	2	4	2	4	0.0	0.0
Testis-specific gene 10 protein (Fragment)	TSGA10	100.0	NA	2	NA	2	NA	2	NA	0.0	NA
Vacuolar protein sorting-associated protein 16 homolog	VPS16	100.0	100.0	2	2	2	2	2	3	0.0	0.0
Peroxiredoxin-2	PRDX2	100.0	100.0	9	8	10	8	23	22	37.4	32.8
Isoform 3 of Oxysterol-binding protein-related protein 6	OSBPL6	100.0	NA	4	NA	4	NA	9	NA	0.0	NA
Protein FAM76A	FAM76A	100.0	NA	2	NA	2	NA	2	NA	0.0	NA
Junction plakoglobin	JUP	100.0	100.0	6	4	7	4	8	4	20.0	13.0

Isoform 2 of N-acetylmuramoyl-L-alanine amidase	PGLYRP2	100.0	100.0	12	13	29	28	92	81	28.1	30.9
Complement component C6	C6	100.0	100.0	35	39	52	54	190	193	37.0	42.4
SCO-spondin	SSPO	100.0	100.0	2	2	2	3	4	4	0.5	0.5
Isoform 3 of Agrin	AGRN	100.0	100.0	2	2	2	2	2	2	0.0	0.0
Splicing factor 3A subunit 1	SF3A1	100.0	100.0	3	4	3	4	5	7	4.0	5.1
Ficolin-3	FCN3	100.0	100.0	9	9	15	14	68	60	34.8	34.8
Paternally-expressed gene 3 protein	PEG3	100.0	100.0	2	2	3	3	7	10	0.0	0.0
Huntingtin-associated protein 1	HAP1	100.0	100.0	2	3	2	3	5	13	4.5	8.2
Isoform 6 of Titin	TTN	100.0	100.0	2	2	2	2	2	11	0.6	0.0
Glutathione synthetase	GSS	100.0	100.0	2	3	2	3	2	3	11.3	9.5
Rho GTPase-activating protein 21	ARHGAP21	100.0	100.0	4	3	4	3	5	5	3.8	2.8
Probable exonuclease mut-7 homolog	EXD3	100.0	100.0	2	2	2	2	2	2	0.0	0.0
Zinc finger protein 697	ZNF697	100.0	100.0	2	2	2	2	9	5	0.0	0.0
Oligoribonuclease, mitochondrial	REXO2	100.0	NA	2	NA	2	NA	2	NA	10.4	NA
Plasma protease C1 inhibitor	SERPING1	100.0	100.0	14	15	33	33	294	263	23.4	25.4
Collagen alpha-3(VI) chain	COL6A3	100.0	100.0	3	6	4	6	6	7	1.7	3.5
Cystatin-C	CST3	100.0	100.0	3	3	5	5	8	7	19.2	19.2
DNA polymerase	POLA1	100.0	NA	2	NA	2	NA	4	NA	2.2	NA
Isoform 2 of Myosin-14	MYH14	100.0	100.0	4	3	4	3	5	3	0.0	0.0
Calcium-binding mitochondrial carrier protein Aralar1	SLC25A12	100.0	NA	2	NA	2	NA	3	NA	4.6	NA
Uncharacterized protein KIAA0947	KIAA0947	100.0	NA	2	NA	2	NA	3	NA	0.0	NA
Microtubule-actin cross-linking factor 1, isoforms 1/2/3/5	MACF1	100.0	100.0	3	5	3	5	5	6	0.0	0.8
78 kDa glucose-regulated protein	HSPA5	100.0	100.0	4	4	4	4	6	6	8.9	8.9
Glyceraldehyde-3-phosphate dehydrogenase	GAPDH	100.0	100.0	4	5	4	5	10	7	17.6	24.6

Isoform 2 of Cell surface glycoprotein MUC18	MCAM	100.0	100.0	4	6	5	8	7	10	8.2	13.2
Inhibin beta E chain	INHBE	100.0	NA	2	NA	2	NA	2	NA	8.0	NA
Mucin-19	MUC19	100.0	100.0	2	4	2	4	2	4	0.0	0.0
Isoform 2 of Autophagy-related protein 13	ATG13	100.0	NA	2	NA	2	NA	2	NA	7.5	NA
Oncostatin-M-specific receptor subunit beta	OSMR	100.0	NA	2	NA	2	NA	2	NA	2.6	NA
Selenoprotein P	SEPP1	100.0	100.0	5	6	9	9	18	22	12.3	14.4
Alpha-1B-glycoprotein	A1BG	100.0	100.0	15	16	30	34	269	229	53.9	58.0
Arf-GAP with coiled-coil, ANK repeat and PH domain-containing protein 2	ACAP2	100.0	100.0	2	2	2	2	3	2	0.0	0.0
DmX-like protein 1	DMXL1	100.0	100.0	2	2	2	2	2	2	0.0	0.0
Apolipoprotein C-II	APOC2	100.0	100.0	7	7	11	12	32	39	36.0	36.0
Isoform 3 of Transcription initiation factor TFIID subunit 1	TAF1	100.0	NA	2	NA	2	NA	2	NA	1.1	NA
Isoform 2 of [Pyruvate dehydrogenase [lipoamide]] kinase isozyme 3, mitochondrial	PDK3	100.0	NA	2	NA	2	NA	2	NA	0.0	NA
Isoform 2 of Phosphatidylinositol 3,4,5-trisphosphate 5-phosphatase 2	INPPL1	100.0	NA	2	NA	2	NA	2	NA	0.0	NA
Lumican	LUM	100.0	100.0	11	11	23	21	94	96	37.6	37.6
Nuclear receptor ROR-alpha	RORA	100.0	NA	2	NA	2	NA	2	NA	0.0	NA
Neutrophil gelatinase-associated lipocalin	LCN2	100.0	NA	2	NA	2	NA	2	NA	16.0	NA
Isoform 4 of Uncharacterized protein KIAA1683	KIAA1683	100.0	100.0	2	3	2	3	3	3	1.8	0.0
Coiled-coil domain-containing protein 73	CCDC73	100.0	NA	2	NA	2	NA	2	NA	0.0	NA

Isoform 4 of Cell division cycle protein 20 homolog B	CDC20B	100.0	NA	2	NA	2	NA	5	NA	0.0	NA
Chromodomain-helicase-DNA-binding protein 7	CHD7	100.0	NA	3	NA	3	NA	4	NA	0.9	NA
Low-density lipoprotein receptor-related protein 4	LRP4	100.0	NA	3	NA	3	NA	3	NA	0.0	NA
Band 4.1-like protein 3	EPB41L3	100.0	NA	2	NA	2	NA	2	NA	0.0	NA
Isoform 6 of Voltage-dependent P/Q-type calcium channel subunit alpha-1A	CACNA1A	100.0	100.0	2	4	2	4	2	4	0.0	0.0
Cyclin-dependent kinase 13	CDK13	100.0	NA	2	NA	2	NA	3	NA	1.4	NA
Isoform 2 of Hyaluronan-binding protein 2	HABP2	100.0	100.0	13	15	15	16	32	34	23.2	28.3
Sex hormone-binding globulin	SHBG	100.0	100.0	7	7	11	10	21	27	22.1	23.5
Luc7-like protein 3	LUC7L3	100.0	100.0	2	2	2	2	3	3	5.3	4.7
Isoform 2 of Neurobeachin-like protein 2	NBEAL2	100.0	NA	2	NA	2	NA	2	NA	0.7	NA
Plasmalemma vesicle-associated protein	PLVAP	100.0	100.0	2	3	2	3	2	4	0.0	0.0
Potassium voltage-gated channel subfamily B member 1	KCNB1	100.0	NA	2	NA	2	NA	2	NA	0.0	NA
Inter-alpha-trypsin inhibitor heavy chain H4	ITIH4	100.0	100.0	32	31	60	56	345	345	41.6	40.9
Epidermal growth factor receptor	EGFR	100.0	100.0	2	2	2	2	2	2	1.8	1.8
Baculoviral IAP repeat-containing protein 1 (Fragment)	psiNAIP	100.0	100.0	2	2	2	2	5	4	0.0	0.0
Prolactin-inducible protein	PIP	100.0	NA	2	NA	2	NA	3	NA	15.8	NA
Keratin, type I cytoskeletal 9	KRT9	100.0	100.0	24	24	45	42	140	152	57.8	57.6
Obscurin	OBSCN	100.0	100.0	4	4	4	4	7	5	0.5	0.6

Gamma-glutamyl hydrolase	GGH	100.0	100.0	2	4	2	4	2	5	7.2	14.2
Uncharacterized protein C1orf173	C1orf173	100.0	NA	3	NA	3	NA	3	NA	3.2	NA
Isoform SERCA1A of Sarcoplasmic/endoplasmic reticulum calcium ATPase 1	ATP2A1	100.0	NA	2	NA	2	NA	2	NA	0.0	NA
Ig kappa chain C region	IGKC	100.0	100.0	5	4	5	4	6	6	80.2	67.0
Isoform 2 of Helicase SRCAP	SRCAP	100.0	100.0	3	3	3	3	3	3	0.0	0.0
Ig lambda-2 chain C regions	IGLC2	100.0	100.0	5	4	7	6	15	12	63.2	55.7
Isoform 2 of Cytochrome P450 1A2	CYP1A2	99.9	99.9	2	2	2	2	4	4	3.5	3.5
PERQ amino acid-rich with GYF domain-containing protein 1	GIGYF1	100.0	NA	2	NA	2	NA	2	NA	3.1	NA
Retinoblastoma-like protein 2	RBL2	100.0	NA	2	NA	2	NA	3	NA	0.0	NA
Complement C1q subcomponent subunit A	C1QA	100.0	100.0	3	5	5	7	19	18	17.6	18.4
Vacuolar protein sorting-associated protein 13D	VPS13D	100.0	100.0	6	4	6	4	6	5	1.6	1.2
Golgi-specific brefeldin A-resistance guanine nucleotide exchange factor 1	GBF1	100.0	NA	2	NA	2	NA	2	NA	1.1	NA
Myomesin-1	MYOM1	100.0	100.0	3	2	3	2	3	2	1.9	1.2
Isoform 2 of Neural cell adhesion molecule L1-like protein	CHL1	100.0	100.0	4	5	4	5	5	6	3.3	4.7
Isoform B of Interferon regulatory factor 7	IRF7	99.9	NA	2	NA	2	NA	2	NA	7.4	NA
Isoform B of Coagulation factor VII	F7	100.0	NA	2	NA	2	NA	2	NA	9.5	NA
Protein IWS1 homolog	IWS1	100.0	NA	2	NA	2	NA	2	NA	0.0	NA
Pentatricopeptide repeat-containing protein 2, mitochondrial	PTCD2	100.0	NA	3	NA	3	NA	3	NA	0.0	NA

Serine/threonine-protein phosphatase 2A 55 kDa regulatory subunit B delta isoform	PPP2R2D	100.0	NA	2	NA	2	NA	6	NA	4.2	NA
Ras GTPase-activating protein 3	RASA3	100.0	NA	2	NA	2	NA	2	NA	3.4	NA
Protein S100-A8	S100A8	100.0	100.0	4	3	5	4	12	10	33.3	32.3
Sodium channel and clathrin linker 1	SCLT1	100.0	NA	2	NA	2	NA	2	NA	3.2	NA
Isoform 2 of Dynein heavy chain 9, axonemal	DNAH9	100.0	100.0	2	3	2	3	2	7	0.6	0.0
Protein Shroom3	SHROOM3	100.0	NA	3	NA	3	NA	4	NA	0.0	NA
Laminin subunit gamma-1	LAMC1	100.0	100.0	2	3	2	3	2	3	0.0	0.0
Ninein-like protein	NINL	100.0	100.0	2	2	2	2	3	2	1.6	1.6
Isoform 2 of Zinc finger protein 839	ZNF839	100.0	NA	2	NA	2	NA	2	NA	4.1	NA
Keratin, type II cytoskeletal 74	KRT74	100.0	NA	3	NA	3	NA	4	NA	9.6	NA
SAFB-like transcription modulator	SLTM	100.0	100.0	2	2	2	2	2	2	1.7	1.7
Intercellular adhesion molecule 1	ICAM1	100.0	100.0	3	3	3	4	5	6	7.9	7.7
Cartilage oligomeric matrix protein	COMP	100.0	100.0	6	6	7	6	7	6	11.5	11.5
WASH complex subunit strumpellin	KIAA0196	100.0	100.0	2	2	2	2	2	2	2.9	0.0
Serum amyloid P-component	APCS	100.0	100.0	7	7	13	12	66	68	30.0	30.0
Isoform Short of Adenomatous polyposis coli protein	APC	100.0	100.0	5	4	5	4	9	11	2.8	2.2
Versican core protein	VCAN	100.0	NA	2	NA	2	NA	4	NA	0.7	NA
Coagulation factor XIII A chain	F13A1	100.0	100.0	7	7	10	10	21	22	11.3	11.9
Breast cancer type 2 susceptibility protein	BRCA2	100.0	NA	2	NA	2	NA	2	NA	0.0	NA
Centrosomal protein of 192 kDa	CEP192	100.0	100.0	2	2	2	2	2	2	1.1	0.0
Carboxypeptidase B2	CPB2	100.0	100.0	9	9	12	13	31	27	25.3	28.1

Isoform 2 of Zinc finger protein 292	ZNF292	100.0	100.0	2	2	2	2	2	2	0.0	0.0
Isoform 2 of ATP-binding cassette sub-family C member 8	ABCC8	100.0	NA	2	NA	2	NA	2	NA	0.0	NA
Isoform 2 of Scavenger receptor cysteine-rich type 1 protein M130	CD163	100.0	100.0	2	2	2	2	2	2	1.6	1.7
Coagulation factor IX	F9	100.0	100.0	10	10	12	11	19	21	28.2	29.7
Activity-dependent neuroprotector homeobox protein	ADNP	100.0	NA	2	NA	2	NA	2	NA	0.0	NA
Peptidase inhibitor 16	PI16	100.0	100.0	4	6	4	7	8	9	9.3	18.4
Transient receptor potential cation channel subfamily M member 5	TRPM5	100.0	NA	3	NA	3	NA	3	NA	3.0	NA
Mitogen-activated protein kinase kinase kinase MLK4	MLK4	100.0	NA	2	NA	2	NA	2	NA	0.0	NA
Isoform 3 of Attractin	ATRN	100.0	100.0	15	16	20	21	43	39	14.9	14.9
Neuropilin-1	NRP1	100.0	100.0	3	2	3	2	5	3	4.5	3.5
Microfibrillar-associated protein 1	MFAP1	100.0	NA	3	NA	3	NA	3	NA	0.0	NA
Hemopexin	HPX	100.0	100.0	24	23	50	51	604	587	58.4	54.8
A disintegrin and metalloproteinase with thrombospondin motifs 9	ADAMTS9	100.0	100.0	2	2	2	2	5	6	0.0	0.0
Insulin-like growth factor-binding protein 3	IGFBP3	100.0	100.0	7	9	10	12	26	24	29.9	41.2
DnaJ homolog subfamily C member 2	DNAJC2	100.0	NA	2	NA	2	NA	2	NA	4.4	NA
Protein PRR14L	PRR14L	100.0	NA	2	NA	2	NA	2	NA	0.0	NA
A-kinase anchor protein 4	AKAP4	100.0	100.0	2	2	2	2	18	13	0.0	0.0
Zinc finger ZZ-type and EF-hand domain-containing protein 1	ZZEF1	100.0	NA	3	NA	3	NA	3	NA	0.0	NA
Properdin	CFP	100.0	100.0	5	6	7	7	14	12	12.4	16.0
Kaliocin-1 (Fragment)	LTF	100.0	100.0	10	13	12	15	14	22	18.0	21.1

Cofilin-1	CFL1	100.0	100.0	2	2	3	2	3	3	15.1	15.1
Catalase	CAT	100.0	100.0	2	3	2	3	2	3	6.3	6.8
Serine-protein kinase ATM	ATM	100.0	100.0	3	2	3	2	4	2	1.7	1.1
Isoform 2 of Cyclic GMP-AMP synthase	MB21D1	100.0	100.0	2	2	2	2	3	3	0.0	0.0
CREB/ATF bZIP transcription factor	CREBZF	99.9	NA	2	NA	2	NA	2	NA	7.8	NA
Unhealthy ribosome biogenesis protein 2 homolog	URB2	100.0	100.0	2	2	2	2	3	2	0.0	0.0
Isoform 4 of Nesprin-1	SYNE1	100.0	100.0	2	2	2	2	5	6	0.0	0.0
Phospholipid transfer protein	PLTP	100.0	100.0	5	5	9	10	24	24	12.1	12.1
Alpha-1-acid glycoprotein 1	ORM1	100.0	100.0	12	13	24	24	281	268	46.8	54.7
Cysteine-rich secretory protein 3	CRISP3	100.0	100.0	2	3	3	3	4	5	6.2	9.1
Rho GTPase-activating protein 23	ARHGAP23	100.0	100.0	6	5	6	5	6	5	0.0	0.0
Sphingosine-1-phosphate lyase 1	SGPL1	100.0	100.0	2	2	2	2	2	2	3.2	3.2
Centrosome-associated protein CEP250	CEP250	100.0	100.0	2	2	2	2	4	2	0.0	0.0
Isoform 20 of Fibroblast growth factor receptor 1	FGFR1	100.0	100.0	2	3	2	3	2	3	3.9	4.7
X-ray radiation resistance-associated protein 1	XRRA1	100.0	NA	2	NA	2	NA	6	NA	3.5	NA
Isoform 2 of Intersectin-2	ITSN2	100.0	100.0	3	2	3	2	4	2	0.0	0.0
Islet cell autoantigen 1-like protein	ICA1L	100.0	100.0	2	2	2	3	6	8	0.0	0.0
Isoform 3 of Protein FAM184A	FAM184A	100.0	100.0	2	2	2	3	2	3	0.0	2.1
Preylcysteine oxidase 1	PCYOX1	100.0	100.0	9	8	16	13	25	26	22.8	19.6
Vasorin	VASN	100.0	100.0	4	3	5	5	8	6	8.0	6.4
Keratin, type II cytoskeletal 2 epidermal	KRT2	100.0	100.0	2	25	2	39	2	96	0.0	0.0
Zinc finger RNA-binding protein	ZFR	100.0	100.0	2	2	2	2	2	2	0.0	0.0
FYVE, RhoGEF and PH domain-containing protein 5	FGD5	100.0	100.0	2	2	3	2	7	5	2.1	2.6

Filamin-A	FLNA	100.0	100.0	2	2	3	3	5	4	0.7	0.7
Complement factor H-related protein 2	CFHR2	100.0	100.0	3	2	3	3	6	8	24.1	20.4
Isoform 2 of Nuclear receptor coactivator 7	NCOA7	100.0	NA	2	NA	2	NA	2	NA	0.0	NA
Transforming growth factor-beta-induced protein ig-h3	TGFBI	100.0	100.0	10	9	11	12	15	19	20.6	19.3
Inter-alpha-trypsin inhibitor heavy chain H2	ITIH2	100.0	100.0	28	27	56	57	496	516	35.4	35.3
Protein polybromo-1	PBRM1	100.0	NA	2	NA	2	NA	2	NA	1.1	NA
Dynein heavy chain 3, axonemal	DNAH3	100.0	NA	2	NA	2	NA	2	NA	0.0	NA
Isoform 2 of Integrin alpha-7	ITGA7	100.0	100.0	2	2	2	2	3	3	0.0	0.0
Zinc finger Ran-binding domain-containing protein 2	ZRANB2	100.0	100.0	3	2	3	2	3	3	11.5	7.3
Inner nuclear membrane protein Man1	LEMD3	100.0	100.0	2	2	2	2	2	2	0.0	0.0
Transcription termination factor 2	TTF2	100.0	NA	2	NA	2	NA	8	NA	2.5	NA
Fibrous sheath-interacting protein 2	FSIP2	100.0	100.0	3	2	3	2	3	2	0.0	0.4
Basic helix-loop-helix domain-containing protein KIAA2018	KIAA2018	100.0	NA	2	NA	2	NA	2	NA	1.4	NA
TRAF2 and NCK-interacting protein kinase	TNIK	100.0	NA	2	NA	2	NA	2	NA	0.0	NA
Msx2-interacting protein	SPEN	100.0	100.0	3	2	3	2	13	16	0.0	0.0
Isoform 2 of Hemicentin-1	HMCN1	100.0	NA	2	NA	2	NA	4	NA	0.5	NA
Complement component C7	C7	100.0	100.0	30	32	48	50	135	141	49.1	49.1
Isoform 2 of Sodium/potassium-transporting ATPase subunit alpha-1	ATP1A1	100.0	NA	2	NA	2	NA	3	NA	0.0	NA
Bone morphogenetic protein receptor type-2	BMPR2	100.0	NA	2	NA	2	NA	3	NA	3.3	NA

Putative protein FAM71E2	FAM71E2	100.0	NA	2	NA	2	NA	2	NA	0.0	NA
Isoform 1B of Desmocollin-1	DSC1	100.0	100.0	2	2	2	2	3	3	3.0	2.7
Isoform 3 of Acetyl-CoA carboxylase 1	ACACA	100.0	NA	2	NA	2	NA	6	NA	1.5	NA
Ribosomal L1 domain-containing protein 1 (Fragment)	RSL1D1	100.0	NA	2	NA	2	NA	2	NA	4.0	NA
Isoform 2 of Cartilage acidic protein 1	CRTAC1	100.0	100.0	7	7	8	9	8	11	16.3	16.3
Glyoxylate reductase/hydroxypyruvate reductase	GRHPR	100.0	NA	2	NA	2	NA	2	NA	0.0	NA
Complement C5	C5	100.0	100.0	51	52	87	81	318	301	33.8	36.5
Nuclear pore membrane glycoprotein 210	NUP210	100.0	NA	2	NA	2	NA	3	NA	1.6	NA
Regulator of G-protein signaling 22	RGS22	100.0	NA	2	NA	2	NA	2	NA	0.0	NA
Complement C1q subcomponent subunit B	C1QB	100.0	100.0	4	4	6	8	39	33	20.6	20.6
Complement factor H-related protein 1	CFHR1	100.0	100.0	5	5	8	7	19	16	45.8	33.6
Isoform 2 of Uncharacterized protein C9orf174	C9orf174	100.0	100.0	2	3	2	3	3	4	0.0	0.0
General transcription factor 3C polypeptide 5	GTF3C5	100.0	100.0	2	2	2	2	3	4	0.0	0.0
Uncharacterized protein KIAA1210	KIAA1210	100.0	NA	2	NA	2	NA	2	NA	0.0	NA
L-lactate dehydrogenase B chain	LDHB	100.0	100.0	3	4	4	5	7	11	9.6	11.7
Kinesin-like protein KIF11	KIF11	100.0	NA	2	NA	2	NA	2	NA	2.1	NA
KAT8 regulatory NSL complex subunit 2	KANSL2	100.0	NA	2	NA	2	NA	2	NA	3.3	NA
Nucleolar transcription factor 1	UBTF	100.0	100.0	2	2	2	2	2	2	2.2	3.0
Coiled-coil domain-containing protein 141	CCDC141	100.0	NA	2	NA	2	NA	3	NA	0.0	NA

Actin-binding protein anillin	ANLN	100.0	NA	2	NA	2	NA	2	NA	2.8	NA
Isoform 3 of DmX-like protein 2	DMXL2	100.0	100.0	2	2	2	2	8	6	0.8	1.5
Fetuin-B	FETUB	100.0	100.0	8	9	11	12	25	29	27.2	31.7
Isoform 2 of Aminopeptidase O	AOPEP	100.0	NA	3	NA	3	NA	5	NA	5.7	NA
Calpain-3	CAPN3	100.0	NA	2	NA	2	NA	2	NA	5.4	NA
Dynein heavy chain 7, axonemal	DNAH7	100.0	100.0	4	3	4	3	5	5	0.0	0.0
Adipocyte plasma membrane-associated protein (Fragment)	APMAP	100.0	100.0	2	5	2	5	2	5	8.6	15.9
Filaggrin	FLG	100.0	100.0	2	2	2	2	2	2	1.0	0.4
Myosin-9	MYH9	100.0	100.0	2	2	2	2	2	4	2.8	2.0
Serum amyloid A-1 protein	SAA1	100.0	100.0	8	7	10	9	34	32	73.8	65.6
Talin-1	TLN1	100.0	NA	4	NA	4	NA	4	NA	2.4	NA
Keratin, type I cytoskeletal 13	KRT13	100.0	100.0	4	4	4	4	4	4	19.3	24.5
Leucine-rich repeat and IQ domain-containing protein 3	LRRIQ3	100.0	100.0	4	2	4	2	7	5	7.9	4.2
DNA-directed RNA polymerase	POLR1B	100.0	100.0	2	2	2	2	4	6	2.4	2.1
Fibulin-1	FBLN1	100.0	100.0	9	7	11	8	18	12	16.8	14.4
Apolipoprotein B-100	APOB	100.0	100.0	#####		358	353	1638	1634	50.9	51.1
Protein FAM179B	FAM179B	100.0	100.0	2	2	2	2	4	4	0.0	0.0
Eukaryotic translation initiation factor 2-alpha kinase 4	EIF2AK4	100.0	NA	3	NA	3	NA	3	NA	1.7	NA
Keratin, type I cuticular Ha1	KRT31	100.0	100.0	5	5	6	6	6	6	12.7	13.5
Bone morphogenetic protein 3	BMP3	100.0	NA	2	NA	2	NA	2	NA	5.7	NA
Focadhesin	FOCAD	100.0	NA	2	NA	2	NA	2	NA	1.3	NA
Isoform 2 of E3 ubiquitin-protein ligase UBR4	UBR4	100.0	100.0	4	2	4	2	6	4	0.0	0.0

Isoform 5 of Immunoglobulin-like and fibronectin type III domain-containing protein 1	IGFN1	100.0	100.0	2	2	2	2	4	2	0.7	0.8
Fibrinogen alpha chain	FGA	100.0	100.0	33	34	70	73	593	569	40.6	39.3
Serine/threonine-protein kinase LMTK3	LMTK3	100.0	NA	2	NA	2	NA	2	NA	2.2	NA
Isoform Beta of Apoptosis regulator BAX	BAX	100.0	99.9	2	2	2	2	4	3	11.9	11.9
Zinc finger CCHC domain-containing protein 3	ZCCHC3	99.9	NA	2	NA	2	NA	2	NA	0.0	NA
Hemoglobin subunit beta	HBB	100.0	100.0	7	6	11	10	29	23	59.9	53.7
Protein Z-dependent protease inhibitor	SERPINA10	100.0	100.0	10	11	11	15	21	24	25.4	27.1
Putative DNA repair and recombination protein RAD26-like	RAD26L	100.0	100.0	2	2	2	2	2	2	0.0	0.0
Spermatid-specific manchette-related protein 1	SMRP1	100.0	100.0	2	2	2	2	3	3	12.6	12.6
Nucleus accumbens-associated protein 2	NACC2	100.0	NA	2	NA	2	NA	3	NA	5.1	NA
Putative ATP-dependent RNA helicase DHX30	DHX30	100.0	NA	2	NA	2	NA	2	NA	2.3	NA
Aggrecan core protein	ACAN	100.0	NA	2	NA	2	NA	3	NA	0.5	NA
Uncharacterized protein FLJ46347		100.0	100.0	2	2	2	2	3	2	4.8	0.0
Complement factor H	CFH	100.0	100.0	60	60	124	117	689	718	59.1	55.9
Isoform 5 of WD and tetratricopeptide repeats protein 1	WDTC1	100.0	NA	2	NA	2	NA	2	NA	3.9	NA
Isoform 2 of Janus kinase and microtubule-interacting protein 2	JAKMIP2	100.0	100.0	2	2	3	3	3	3	3.0	4.1
Pre-mRNA-splicing factor ATP-dependent RNA helicase PRP16	DHX38	100.0	100.0	2	4	2	4	2	4	2.6	0.0
POTE ankyrin domain family member	POTED	100.0	NA	2		2		3	NA	5.0	NA

D				NA	NA							
Plexin domain-containing protein 2	PLXDC2	100.0	100.0	3	4	3	4	5	5	7.6	9.5	
Isoform 2 of Glycogen phosphorylase, muscle form	PYGM	100.0	NA	2	NA	2	NA	2	NA	0.0	NA	
Kinesin-like protein KIFC3	KIFC3	100.0	NA	2	NA	2	NA	2	NA	4.4	NA	
Death-inducer obliterator 1	DIDO1	100.0	100.0	2	2	2	2	3	2	0.0	0.0	
Plasma serine protease inhibitor	SERPINA5	100.0	100.0	11	13	18	20	44	48	29.1	32.3	
Isoform 4 of Coiled-coil domain-containing protein 88B	CCDC88B	100.0	100.0	2	2	2	2	3	2	2.1	1.6	
Isoform 2 of Spectrin beta chain, erythrocytic	SPTB	100.0	NA	2	NA	2	NA	2	NA	0.0	NA	
Isoform 3 of CDK5 regulatory subunit-associated protein 1	CDK5RAP1	100.0	99.9	2	2	2	2	3	2	5.3	0.0	
Anaphase-promoting complex subunit 1	ANAPC1	100.0	NA	2	NA	2	NA	3	NA	0.0	NA	
Complement C3	C3	100.0	100.0	#####		263	261	3192	3033	71.9	72.1	
Isoform 2 of Collagen alpha-3(IV) chain	COL4A3	100.0	NA	2	NA	2	NA	2	NA	1.8	NA	
Protein pitchfork	PIFO	100.0	NA	2	NA	2	NA	2	NA	5.8	NA	
Basal cell adhesion molecule	BCAM	100.0	NA	2	NA	2	NA	2	NA	6.2	NA	
Protein very KIND	KNDC1	100.0	NA	3	NA	3	NA	8	NA	1.9	NA	
Methylcrotonoyl-CoA carboxylase subunit alpha, mitochondrial	MCCC1	100.0	NA	2	NA	2	NA	2	NA	0.0	NA	
Isoform 2 of Spermatogenesis-associated protein 20	SPATA20	100.0	NA	2	NA	2	NA	2	NA	2.5	NA	
Tetratricopeptide repeat protein 40	TTC40	100.0	NA	2	NA	2	NA	5	NA	0.7	NA	

Probable E3 ubiquitin-protein ligase MYCBP2	MYCBP2	100.0	100.0	2	2	2	2	3	4	0.5	0.4
Inositol 1,4,5-trisphosphate receptor type 3	ITPR3	100.0	NA	2	NA	2	NA	2	NA	0.9	NA
Lymphatic vessel endothelial hyaluronic acid receptor 1	LYVE1	100.0	100.0	5	5	8	8	13	18	14.3	14.3
Isoform 4 of WW domain-containing adapter protein with coiled-coil	WAC	100.0	NA	2	NA	2	NA	5	NA	0.0	NA
Spectrin beta chain, non-erythrocytic 5	SPTBN5	100.0	NA	3	NA	3	NA	3	NA	1.1	NA
Isoform Beta-4B of Integrin beta-4	ITGB4	100.0	NA	2	NA	2	NA	2	NA	0.0	NA
Isoform 14 of Fibronectin	FN1	100.0	100.0	61	60	106	104	470	453	41.8	41.0
F-box only protein 10	FBXO10	100.0	99.9	2	2	2	2	3	2	0.0	0.0
Ephrin type-B receptor 1	EPHB1	100.0	NA	2	NA	2	NA	2	NA	2.9	NA
Insulin-like growth factor-binding protein 4	IGFBP4	100.0	NA	2	NA	2	NA	2	NA	7.8	NA
Complement component C8 gamma chain	C8G	100.0	100.0	8	9	12	12	51	53	49.0	55.0
Isoform 2 of Chromodomain-helicase-DNA-binding protein 8	CHD8	100.0	NA	2	NA	2	NA	2	NA	0.7	NA
Speckle-type POZ protein-like	SPOPL	100.0	NA	2	NA	2	NA	2	NA	0.0	NA
Poly [ADP-ribose] polymerase 14	PARP14	100.0	NA	2	NA	2	NA	2	NA	0.0	NA
Chromodomain-helicase-DNA-binding protein 2	CHD2	100.0	NA	3	NA	3	NA	3	NA	3.5	NA
Cadherin-5	CDH5	100.0	100.0	4	6	4	7	9	9	5.9	8.9
Monocyte differentiation antigen CD14	CD14	100.0	100.0	9	7	13	11	30	28	29.6	22.7
Caspase-14	CASP14	100.0	100.0	2	3	2	3	5	4	12.8	18.6
DNA polymerase theta	POLQ	100.0	NA	2		2		4	NA	1.2	NA

					NA		NA				
Vitamin K-dependent protein C heavy chain	PROC	100.0	100.0	8	7	11	8	26	25	22.5	23.0
Coiled-coil domain-containing protein 67	CCDC67	100.0	NA	2	NA	2	NA	2	NA	0.0	NA
Prickle-like protein 2	PRICKLE2	100.0	NA	2	NA	2	NA	3	NA	0.0	NA
Zinc finger protein 831	ZNF831	100.0	NA	2	NA	2	NA	2	NA	0.0	NA
Pre-mRNA-splicing factor SYF1	XAB2	100.0	NA	3	NA	3	NA	3	NA	0.0	NA
Very low-density lipoprotein receptor	VLDLR	100.0	100.0	3	2	3	2	3	2	4.8	2.8
Isoform 2 of E3 ubiquitin-protein ligase HUWE1	HUWE1	100.0	100.0	3	4	3	4	5	6	0.0	0.0
Intercellular adhesion molecule 2	ICAM2	100.0	100.0	2	3	3	6	5	9	11.3	14.9
Complement C1r subcomponent	C1R	100.0	100.0	22	23	38	39	120	119	40.0	41.1
Trinucleotide repeat-containing gene 18 protein	TNRC18	100.0	NA	2	NA	2	NA	2	NA	0.0	NA
Pleckstrin homology domain-containing family G member 4B	PLEKHG4B	100.0	NA	2	NA	2	NA	3	NA	1.9	NA
Periplakin	PPL	100.0	NA	3	NA	3	NA	3	NA	0.0	NA
Plasma kallikrein heavy chain (Fragment)	KLKB1	100.0	100.0	26	25	41	39	143	133	40.5	42.3
Coagulation factor XI	F11	100.0	100.0	14	16	18	24	21	29	24.0	31.0
Isoform 2 of Myotubularin-related protein 12	MTMR12	100.0	NA	2	NA	2	NA	2	NA	4.2	NA
Isoform 2 of Transcription factor 20	TCF20	100.0	NA	3	NA	3	NA	6	NA	0.0	NA
Cartilage intermediate layer protein 1	CILP	100.0	100.0	2	2	2	3	2	4	0.0	2.7
Dedicator of cytokinesis protein 2	DOCK2	100.0	NA	2	NA	2	NA	3	NA	0.0	NA

Insulin receptor substrate 4	IRS4	100.0	100.0	2	2	2	2	2	2	2.0	1.4
Plasminogen	PLG	100.0	100.0	36	38	72	73	360	350	60.5	59.8
Isoform 2 of Autoimmune regulator	AIRE	100.0	NA	2	NA	2	NA	2	NA	0.0	NA
AT-rich interactive domain-containing protein 1A	ARID1A	100.0	100.0	2	3	2	3	2	4	1.1	3.2
Endoplasmic reticulum chaperone protein	HSP90B1	100.0	100.0	2	3	2	3	2	3	3.5	4.5
Isoform 4 of Extracellular matrix protein 1	ECM1	100.0	100.0	16	17	17	20	32	34	37.6	35.4
Isoform 2 of ALS2 C-terminal-like protein	ALS2CL	100.0	NA	3	NA	3	NA	3	NA	4.5	NA
Utrophin	UTRN	100.0	100.0	3	3	3	3	3	4	0.0	0.0
Creatine kinase M-type	CKM	100.0	NA	2	NA	2	NA	3	NA	6.0	NA
Isoform 2 of LON peptidase N-terminal domain and RING finger protein 3	LONRF3	100.0	100.0	3	2	3	2	7	2	6.0	0.0
Isoform 2 of Ig mu chain C region	IGHM	100.0	100.0	13	13	18	18	39	39	31.9	30.2
Receptor-type tyrosine-protein phosphatase eta	PTPRJ	100.0	100.0	3	4	4	4	7	4	3.2	5.2
Isoform 11 of Amyloid beta A4 protein	APP	100.0	100.0	2	3	2	3	2	3	3.4	5.2
Angiogenin	ANG	100.0	100.0	3	3	3	3	6	6	26.5	26.5
Folliculin-interacting protein 1	FNIP1	100.0	100.0	2	2	2	2	2	4	0.0	1.1
L-lactate dehydrogenase	LDHA	100.0	100.0	2	2	2	2	2	3	5.9	5.7
Alpha-2-macroglobulin	A2M	100.0	100.0	65	65	168	163	3553	3418	58.1	57.5
SPARC-like protein 1	SPARCL1	100.0	100.0	2	3	2	3	6	6	3.6	5.0
Conserved oligomeric Golgi complex subunit 6	COG6	100.0	NA	2	NA	2	NA	2	NA	0.0	NA
Rho-associated protein kinase 1	ROCK1	100.0	NA	2	NA	2	NA	2	NA	1.2	NA
Oxytocin-neurophysin 1	OXT	100.0	NA	2	NA	2	NA	2	NA	25.6	NA

TSC22 domain family protein 4	TSC22D4	100.0	NA	2	NA	2	NA	2	NA	6.1	NA
Thrombospondin-1	THBS1	100.0	100.0	28	26	41	38	83	80	29.5	28.3
Isoform 2 of Insulin-like growth factor-binding protein complex acid labile subunit	IGFALS	100.0	100.0	17	18	27	27	94	92	34.5	35.8
Reticulon-4 receptor (Fragment)	RTN4R	100.0	NA	2	NA	2	NA	2	NA	3.7	NA
Fructose-bisphosphate aldolase A	ALDOA	100.0	100.0	2	3	2	3	2	4	7.7	9.9
Isoform 2 of Telomere-associated protein RIF1	RIF1	100.0	NA	2	NA	2	NA	3	NA	0.0	NA
Eukaryotic peptide chain release factor subunit 1	ETF1	100.0	NA	2	NA	2	NA	2	NA	5.0	NA
Unconventional myosin-1e	MYO1E	100.0	100.0	2	3	2	3	3	4	2.5	0.0
Isoform 2 of EGF-containing fibulin-like extracellular matrix protein 1	EFEMP1	100.0	100.0	3	4	5	5	7	7	8.3	10.3
Histidine-rich glycoprotein	HRG	100.0	100.0	16	17	27	28	169	176	34.9	36.4
Glutamate--cysteine ligase catalytic subunit	GCLC	99.9	NA	2	NA	2	NA	2	NA	4.1	NA
Cytochrome P450 1B1	CYP1B1	100.0	NA	2	NA	2	NA	2	NA	3.7	NA
Beta-Ala-His dipeptidase	CNDP1	100.0	100.0	15	14	20	18	38	35	38.3	34.3
CASP8-associated protein 2	CASP8AP2	100.0	NA	2	NA	2	NA	2	NA	0.0	NA
Serum amyloid A-4 protein	SAA4	100.0	100.0	6	6	11	10	53	51	46.9	46.9
Desmoplakin	DSP	100.0	100.0	10	11	11	12	12	16	4.2	4.5
Isoform 2 of Annexin A2	ANXA2	100.0	NA	2	NA	2	NA	2	NA	5.6	NA
Isoform 2 of Synaptopodin-2	SYNPO2	100.0	NA	2	NA	2	NA	2	NA	1.9	NA
Chondroitin sulfate proteoglycan 4	CSPG4	100.0	100.0	3	2	3	2	3	2	1.8	0.0
Zinc finger protein basonuclin-2	BNC2	100.0	NA	2		3		10	NA	1.9	NA

					NA		NA				
Lysosome-associated membrane glycoprotein 2	LAMP2	100.0	100.0	2	2	2	3	5	8	5.5	4.9
DNA polymerase zeta catalytic subunit	REV3L	100.0	NA	2	NA	2	NA	2	NA	0.6	NA
Kallistatin	SERPINA4	100.0	100.0	18	18	30	27	121	119	44.7	44.7
Ribosome-binding protein 1	RRBP1	100.0	100.0	2	2	2	2	2	6	0.0	0.0
Maestro heat-like repeat-containing protein family member 2B	MROH2B	100.0	NA	2	NA	2	NA	2	NA	1.2	NA
Immunoglobulin J chain (Fragment)	IGJ	100.0	NA	2	NA	2	NA	2	NA	12.7	NA
Ankyrin repeat domain-containing protein 30A	ANKRD30A	100.0	NA	2	NA	2	NA	2	NA	1.8	NA
Probable cation-transporting ATPase 13A3	ATP13A3	100.0	NA	2	NA	2	NA	4	NA	0.0	NA
Arf-GAP with Rho-GAP domain, ANK repeat and PH domain-containing protein 1	ARAP1	100.0	NA	2	NA	2	NA	3	NA	0.0	NA
Hornerin	HRNR	100.0	100.0	6	4	6	4	9	13	4.2	3.4
Isoform 2 of RRP12-like protein	RRP12	100.0	100.0	2	2	2	2	2	2	1.5	0.0
Condensin complex subunit 1	NCAPD2	100.0	100.0	4	2	4	2	5	3	2.9	1.8
Obscurin-like protein 1	OBSL1	100.0	NA	2	NA	2	NA	3	NA	1.3	NA
Usherin	USH2A	100.0	100.0	2	2	2	2	2	2	0.4	0.0
Leucine-rich repeat and death domain-containing protein 1	LRRD1	100.0	100.0	2	2	2	2	2	2	0.0	0.0
Zinc finger protein 106	ZNF106	100.0	NA	2	NA	2	NA	2	NA	0.9	NA
BPI fold-containing family A member 1	BPIFA1	100.0	100.0	3	3	5	4	6	4	13.7	15.6
Isoform A of Endothelin-converting enzyme 1	ECE1	100.0	100.0	2	2	2	2	3	3	0.0	0.0

Inter-alpha-trypsin inhibitor heavy chain H1	ITIH1	100.0	100.0	21	21	47	48	347	310	30.8	29.0
Keratin, type II cytoskeletal 4	KRT4	100.0	100.0	4	8	6	11	7	12	13.4	20.6
Isoform 2 of A-kinase anchor protein SPHKAP	SPHKAP	100.0	NA	2	NA	2	NA	2	NA	1.6	NA
VWFA and cache domain-containing protein 1	CACHD1	100.0	NA	2	NA	2	NA	2	NA	1.4	NA
Prolow-density lipoprotein receptor-related protein 1	LRP1	100.0	100.0	2	3	2	3	2	3	0.5	0.7
Receptor-type tyrosine-protein phosphatase gamma	PTPRG	100.0	100.0	2	2	2	2	5	4	1.9	2.0
Beta-2-microglobulin	B2M	100.0	100.0	2	2	2	2	7	7	16.8	16.8
Aminopeptidase N	ANPEP	100.0	100.0	7	7	7	8	7	9	10.4	10.7
Dipeptidase 2	DPEP2	100.0	NA	2	NA	2	NA	2	NA	6.6	NA
Ryanodine receptor 2	RYR2	100.0	NA	2	NA	2	NA	2	NA	0.0	NA
Carboxypeptidase N catalytic chain	CPN1	100.0	100.0	11	12	14	14	39	47	28.2	34.5
Haptoglobin	HP	100.0	100.0	12	15	23	26	65	61	33.0	44.6
Dipeptidyl peptidase 4	DPP4	100.0	100.0	4	4	4	4	4	4	5.1	5.5
Keratin, type I cytoskeletal 16	KRT16	100.0	100.0	7	8	7	9	11	12	32.6	42.1
Matrix metalloproteinase-9	MMP9	100.0	100.0	2	2	4	3	6	5	3.7	3.7
Mannose-binding protein C	MBL2	100.0	100.0	6	8	8	10	13	17	33.1	36.3
Cell division cycle 7-related protein kinase	CDC7	100.0	NA	2	NA	2	NA	3	NA	0.0	NA
ERO1-like protein beta	ERO1LB	100.0	NA	2	NA	2	NA	2	NA	5.6	NA
Isoform 3 of Protein Jumonji	JARID2	100.0	100.0	2	2	2	2	2	2	3.1	0.0
Acyl-CoA synthetase family member 2, mitochondrial	ACSF2	99.9	NA	2	NA	2	NA	2	NA	0.0	NA
C-reactive protein	CRP	100.0	100.0	6	5	8	8	17	14	24.6	21.0

1-phosphatidylinositol 3-phosphate 5-kinase	PIKFYVE	100.0	NA	2	NA	2	NA	2	NA	1.0	NA
Dynein heavy chain 10, axonemal	DNAH10	100.0	100.0	2	2	2	2	3	2	0.7	0.8
Isoform 3 of Zinc finger protein 541	ZNF541	100.0	NA	2	NA	2	NA	2	NA	0.0	NA
Myomesin-2	MYOM2	100.0	100.0	4	2	4	2	4	2	4.0	1.8
Biotinidase	BTD	100.0	100.0	10	10	13	14	38	31	23.7	23.7
Dermcidin	DCD	100.0	100.0	5	5	7	6	15	18	42.7	42.7
F-box/WD repeat-containing protein 1A	BTRC	100.0	NA	2	NA	2	NA	3	NA	4.8	NA
Vascular cell adhesion protein 1	VCAM1	100.0	100.0	4	3	4	3	4	3	7.0	5.1
Low-density lipoprotein receptor-related protein 1B	LRP1B	100.0	100.0	2	2	2	2	3	2	0.4	0.4
Coagulation factor V	F5	100.0	100.0	33	2	40	3	71	4	17.6	0.0
Coatomer subunit gamma-1	COPG1	100.0	100.0	3	3	3	3	3	3	0.0	0.0
UPF0505 protein C16orf62	C16orf62	100.0	NA	2	NA	2	NA	3	NA	0.0	NA
Isoform 2 of Nitric oxide synthase, brain	NOS1	100.0	NA	2	NA	2	NA	2	NA	1.7	NA
Isoform Gamma-A of Fibrinogen gamma chain	FGG	100.0	100.0	24	23	48	46	322	295	58.8	58.8
Zinc finger protein 816	ZNF816	100.0	NA	4	NA	4	NA	5	NA	0.0	NA
Isoform 2 of Cholesteryl ester transfer protein	CETP	100.0	100.0	4	4	6	8	9	11	11.5	11.5
Isoform 2 of Haptoglobin-related protein	HPR	100.0	100.0	3	4	3	4	6	6	24.2	31.2
RING finger protein 39	RNF39	100.0	NA	2	NA	2	NA	2	NA	5.7	NA
CLIP-associating protein 1	CLASP1	100.0	100.0	3	2	3	2	6	5	0.0	0.0
Isoform 2 of EF-hand calcium-binding domain-containing protein 5	EFCAB5	100.0	100.0	2	2	2	2	2	2	0.0	2.2

Isoform 4 of Protein sidekick-2	SDK2	100.0	NA	2	NA	2	NA	2	NA	0.0	NA
Oxysterol-binding protein-related protein 10	OSBPL10	100.0	NA	2	NA	2	NA	2	NA	0.0	NA
Glutathione peroxidase 3	GPX3	100.0	100.0	4	4	9	8	33	24	21.7	21.7
Complement C1s subcomponent	C1S	100.0	100.0	20	20	37	35	105	107	40.0	40.0
Complement factor B	CFB	100.0	100.0	49	53	83	85	414	412	42.2	47.6
Protein FAM208A	FAM208A	100.0	NA	2	NA	2	NA	3	NA	2.2	NA
S1 RNA-binding domain-containing protein 1	SRBD1	100.0	NA	2	NA	2	NA	2	NA	2.9	NA
THO complex subunit 4	ALYREF	100.0	NA	3	NA	3	NA	3	NA	19.1	NA
Isoform 5 of Nuclear receptor coactivator 3	NCOA3	100.0	NA	2	NA	2	NA	2	NA	1.9	NA
Cytoplasmic dynein 1 heavy chain 1	DYNC1H1	100.0	100.0	2	2	2	2	5	2	0.5	0.0
Tau-tubulin kinase 1	TTBK1	100.0	100.0	2	2	2	2	2	2	1.7	0.0
Fibrinogen beta chain	FGB	100.0	100.0	28	27	62	62	393	418	67.0	67.0
TSNARE1 protein	TSNARE1	100.0	NA	2	NA	2	NA	3	NA	4.3	NA
Isoform 2 of Structural maintenance of chromosomes protein 6	SMC6	100.0	100.0	2	3	2	3	2	4	0.0	0.0
Zinc finger and BTB domain-containing protein 48	ZBTB48	100.0	100.0	2	2	2	2	2	2	0.0	0.0
V-type proton ATPase 116 kDa subunit a isoform 2	ATP6V0A2	100.0	NA	2	NA	2	NA	2	NA	4.0	NA
Isoform 3 of ER membrane protein complex subunit 1	EMC1	99.9	NA	2	NA	2	NA	2	NA	0.0	NA
Centromere protein I	CENPI	100.0	NA	2	NA	3	NA	4	NA	3.9	NA
Sortilin-related receptor	SORL1	100.0	NA	2	NA	2	NA	2	NA	1.9	NA

Arf-GAP with Rho-GAP domain, ANK repeat and PH domain-containing protein 2	ARAP2	100.0	NA	2	NA	2	NA	3	NA	0.0	NA
Vitronectin	VTN	100.0	100.0	10	11	22	25	145	152	23.2	24.9
Complement component C8 alpha chain	C8A	100.0	100.0	13	14	23	23	69	93	33.0	33.0
Isoform 2 of 6-phosphofructokinase, liver type	PFKL	100.0	100.0	2	2	2	2	2	2	3.5	3.6
Isoform 3 of Acyl-CoA synthetase family member 4	AASDH	100.0	NA	2	NA	2	NA	3	NA	3.3	NA
Angiotensinogen	AGT	100.0	100.0	10	12	18	20	93	99	20.4	25.6
Keratin, type II cytoskeletal 5	KRT5	100.0	100.0	16	2	21	2	35	2	0.0	0.0
Protein dpy-19 homolog 1	DPY19L1	100.0	100.0	2	2	2	2	2	3	4.6	4.6
Phosphatidylinositol 4-phosphate 3-kinase C2 domain-containing subunit alpha	PIK3C2A	100.0	NA	2	NA	2	NA	2	NA	0.0	NA
von Willebrand factor	VWF	100.0	100.0	14	24	17	25	32	46	6.8	11.2
TNFAIP3-interacting protein 2	TNIP2	100.0	100.0	2	2	2	2	3	6	0.0	0.0
Complement factor I	CFI	100.0	100.0	18	19	28	29	94	92	34.1	34.3
Isoform 4 of Receptor-type tyrosine-protein phosphatase N2	PTPRN2	100.0	100.0	2	2	3	2	5	3	2.9	2.9
Isoform 3 of Collagen alpha-1(XVIII) chain	COL18A1	100.0	NA	2	NA	2	NA	2	NA	0.0	NA
Rab GDP dissociation inhibitor beta	GDI2	100.0	100.0	2	2	2	2	2	2	6.7	6.7
Protein YIPF3 (Fragment)	YIPF3	100.0	NA	2	NA	2	NA	2	NA	8.0	NA
Isoform 4 of Hepatocyte growth factor	HGF	100.0	NA	2	NA	2	NA	2	NA	6.8	NA
Isoform 2 of Insulin-like growth factor-binding protein 7	IGFBP7	100.0	NA	2	NA	2	NA	3	NA	9.3	NA
EPM2A-interacting protein 1	EPM2AIP1	100.0	NA	2		2		3	NA	4.0	NA

					NA	NA					
Carboxypeptidase N subunit 2	CPN2	100.0	100.0	10	10	16	16	41	45	21.1	21.1
ER lumen protein retaining receptor 1	KDELRL1	100.0	NA	2	NA	2	NA	4	NA	14.2	NA
Aspartate aminotransferase, mitochondrial	GOT2	100.0	NA	2	NA	2	NA	2	NA	0.0	NA
FH2 domain-containing protein 1	FHDC1	100.0	NA	2	NA	2	NA	2	NA	0.0	NA
Protein angel homolog 2	ANGEL2	100.0	NA	2	NA	2	NA	2	NA	5.0	NA
Complement C1r subcomponent-like protein	C1RL	100.0	100.0	5	5	7	6	15	12	11.7	11.7
Isoform 2 of L-selectin	SELL	100.0	100.0	4	5	5	6	7	8	9.1	13.5
Coiled-coil domain-containing protein 85C	CCDC85C	99.9	NA	2	NA	2	NA	2	NA	6.9	NA
Echinoderm microtubule associated protein like 3, isoform CRA_e	EML3	100.0	NA	2	NA	2	NA	2	NA	4.1	NA
Apolipoprotein A-IV	APOA4	100.0	100.0	32	32	55	55	350	310	67.7	67.7
MAGUK p55 subfamily member 2	MPP2	100.0	NA	2	NA	2	NA	2	NA	6.2	NA
Isoform 2 of 1-phosphatidylinositol 4,5-bisphosphate phosphodiesterase beta-2	PLCB2	100.0	NA	2	NA	2	NA	2	NA	0.0	NA
snRNA-activating protein complex subunit 4	SNAPC4	100.0	NA	2	NA	2	NA	2	NA	0.0	NA
Mannan-binding lectin serine protease 2	MASP2	100.0	100.0	5	4	7	6	10	8	9.2	7.7
tRNA pseudouridine(38/39) synthase	PUS3	100.0	NA	2	NA	3	NA	4	NA	7.9	NA
ELM2 and SANT domain-containing protein 1	ELMSAN1	100.0	100.0	2	2	2	2	2	2	1.6	1.9

Neuroblast differentiation-associated protein AHNAK	AHNAK	100.0	100.0	2	4	2	4	2	5	0.5	0.9
Zinc finger homeobox protein 3	ZFH3	100.0	100.0	3	2	3	2	3	2	0.0	0.5
Contactin-associated protein-like 2	CNTNAP2	100.0	NA	2	NA	2	NA	6	NA	0.0	NA
Protein DENND6A	DENND6A	100.0	NA	2	NA	2	NA	4	NA	0.0	NA
Complement C2	C2	100.0	100.0	6	7	10	12	39	35	39.5	43.0
Glycocalicin	GP1BA	100.0	100.0	5	6	5	7	11	9	8.1	10.1
Keratin, type II cuticular Hb3	KRT83	100.0	100.0	9	10	10	12	14	18	17.6	17.8
Alpha-2-HS-glycoprotein	AHSG	100.0	100.0	10	10	25	24	398	333	45.2	45.2
Keratin, type II cytoskeletal 75	KRT75	100.0	NA	2	NA	2	NA	2	NA	14.9	NA
Desmoglein-1	DSG1	100.0	100.0	3	2	3	2	3	2	3.7	2.8
Neutrophil defensin 3	DEFA3	100.0	100.0	3	2	3	2	8	6	20.2	19.1
U3 small nucleolar ribonucleoprotein protein MPP10	MPHOSPH10	100.0	NA	2	NA	2	NA	2	NA	0.0	NA
Coagulation factor XII	F12	100.0	100.0	11	13	15	17	59	51	23.3	32.0
Coagulation factor XIII B chain	F13B	100.0	100.0	19	20	30	32	65	59	41.1	42.8
Serum albumin	ALB	100.0	100.0	30	30	38	39	69	67	0.0	0.0
Nebulin	NEB	100.0	100.0	2	4	2	4	2	4	0.2	0.0
MLL cleavage product C180	MLL	100.0	NA	2	NA	2	NA	2	NA	0.5	NA
Tetranectin	CLEC3B	100.0	100.0	8	11	13	16	36	45	46.0	68.3
Uncharacterized protein KIAA1671	KIAA1671	100.0	NA	3	NA	3	NA	3	NA	0.0	NA
Pumilio homolog 1 (Fragment)	PUM1	100.0	NA	2	NA	2	NA	4	NA	0.0	NA
Terminal uridylyltransferase 4	ZCCHC11	100.0	100.0	2	3	2	3	3	3	1.2	1.7
Putative uncharacterized protein MLLT4-AS1	MLLT4-AS1	100.0	NA	2	NA	2	NA	3	NA	0.0	NA

Segment polarity protein dishevelled homolog DVL-1	DVL1	100.0	NA	2	NA	2	NA	2	NA	5.5	NA
Poly [ADP-ribose] polymerase 4	PARP4	100.0	100.0	2	2	2	2	5	3	1.1	1.1
Vesicle-fusing ATPase	NSF	100.0	NA	2	NA	2	NA	2	NA	2.8	NA
Amyloid beta A4 precursor protein-binding family B member 1	APBB1	100.0	NA	2	NA	2	NA	2	NA	4.7	NA
Isoform 2 of Protein strawberry notch homolog 2	SBNO2	100.0	NA	2	NA	2	NA	2	NA	1.6	NA
Nuclear receptor corepressor 1	NCOR1	100.0	100.0	2	2	2	2	3	2	0.7	0.0
Coiled-coil alpha-helical rod protein 1	CCHCR1	100.0	NA	2	NA	2	NA	3	NA	0.0	NA
Serine/threonine-protein kinase ULK2	ULK2	100.0	NA	2	NA	2	NA	2	NA	2.0	NA
Cytoskeleton-associated protein 2	CKAP2	100.0	100.0	2	2	2	2	3	3	4.6	4.3
Adiponectin	ADIPOQ	100.0	100.0	2	3	2	3	4	6	12.3	15.6
Structural maintenance of chromosomes flexible hinge domain-containing protein 1	SMCHD1	100.0	NA	3	NA	3	NA	3	NA	0.0	NA
Rab proteins geranylgeranyltransferase component A 2	CHML	100.0	NA	2	NA	2	NA	2	NA	2.9	NA
14-3-3 protein zeta/delta (Fragment)	YWHAZ	100.0	100.0	5	5	6	5	9	6	21.5	23.7
Oxysterol-binding protein-related protein 1	OSBPL1A	100.0	100.0	4	3	4	3	5	5	0.0	0.0
Isoform 3 of FCH and double SH3 domains protein 1	FCHSD1	100.0	NA	2	NA	2	NA	2	NA	3.9	NA
Isoform 2 of C4b-binding protein beta chain	C4BPB	100.0	100.0	4	4	5	5	8	8	21.1	21.9
Alpha-1-acid glycoprotein 2	ORM2	100.0	100.0	7	7	19	18	117	111	46.8	54.7
Isoform 5 of SH3 domain-containing protein 21	SH3D21	100.0	NA	2	NA	2	NA	2	NA	4.1	NA

DNA polymerase epsilon catalytic subunit A	POLE	100.0	NA	2	NA	2	NA	2	NA	1.4	NA
FERM domain-containing protein 4B	FRMD4B	100.0	100.0	2	3	2	3	2	3	0.0	0.0
RING finger protein 112	RNF112	100.0	NA	2	NA	2	NA	2	NA	0.0	NA
Isoform 2 of Keratin, type I cuticular Ha6	KRT36	100.0	NA	2	NA	2	NA	6	NA	6.0	NA
Isoform BMAL1A of Aryl hydrocarbon receptor nuclear translocator-like protein 1	ARNTL	100.0	NA	2	NA	2	NA	2	NA	0.0	NA
Alpha-1-antitrypsin	SERPINA1	100.0	100.0	10	10	13	12	37	35	29.2	28.7
Alpha-1-antichymotrypsin	SERPINA3	100.0	100.0	18	19	37	37	517	536	38.2	40.2
Neurofilament light polypeptide	NEFL	99.9	NA	2	NA	2	NA	2	NA	4.1	NA
Ankyrin and armadillo repeat-containing protein	ANKAR	100.0	NA	2	NA	2	NA	2	NA	2.1	NA
1-phosphatidylinositol 4,5-bisphosphate phosphodiesterase gamma-2	PLCG2	100.0	NA	2	NA	2	NA	2	NA	2.8	NA
Centrosomal protein of 290 kDa	CEP290	100.0	100.0	3	6	3	6	4	9	1.5	2.4
Protein unc-13 homolog B	UNC13B	100.0	NA	2	NA	2	NA	2	NA	1.6	NA
Carnitine O-palmitoyltransferase 1, liver isoform	CPT1A	100.0	NA	2	NA	2	NA	3	NA	3.4	NA
Low-density lipoprotein receptor-related protein 2	LRP2	100.0	NA	3	NA	3	NA	3	NA	0.0	NA
Translation initiation factor eIF-2B subunit delta	EIF2B4	100.0	99.9	2	2	2	2	2	2	4.2	6.3
Leucine-rich alpha-2-glycoprotein	LRG1	100.0	100.0	8	10	14	15	82	81	31.1	39.5
Isoform G of Protein SON	SON	100.0	100.0	3	3	3	3	3	3	0.0	1.1
E3 ubiquitin-protein ligase BRE1A	RNF20	100.0	NA	2	NA	2	NA	2	NA	2.5	NA

Dynein heavy chain 2, axonemal	DNAH2	100.0	100.0	3	4	3	4	3	4	1.0	1.0
Serum paraoxonase/arylesterase 1	PON1	100.0	100.0	10	11	28	28	139	147	49.9	55.2
Protein PRRC2B	PRRC2B	100.0	100.0	2	3	2	3	2	3	0.0	0.0
Heat shock 70 kDa protein 4	HSPA4	100.0	NA	2	NA	3	NA	13	NA	0.0	NA
Phosphate-regulating neutral endopeptidase	PHEX	100.0	NA	2	NA	2	NA	2	NA	2.9	NA
Laminin subunit alpha-2	LAMA2	100.0	100.0	2	3	2	3	2	4	0.0	0.0
Isoform 2 of La-related protein 1	LARP1	100.0	NA	2	NA	2	NA	2	NA	1.6	NA
Protein NPAT	NPAT	100.0	NA	3	NA	3	NA	4	NA	0.0	NA
RNA-binding motif protein, X-linked-like-3	RBMXL3	100.0	100.0	2	2	2	2	2	2	0.0	2.8
Isoform 2 of SUN domain-containing ossification factor	SUCO	100.0	NA	2	NA	3	NA	7	NA	0.0	NA
Oxysterol-binding protein-related protein 11	OSBPL11	100.0	NA	2	NA	2	NA	19	NA	4.3	NA
Isoform 3 of Histone-lysine N-methyltransferase MLL2	MLL2	100.0	100.0	2	2	2	2	2	2	0.0	0.0
Platelet basic protein	PPBP	100.0	100.0	8	8	14	13	70	75	51.6	51.6
Protein SOGA2	SOGA2	100.0	100.0	3	3	3	3	3	5	0.0	0.0
Isoform 2 of Nucleolar protein 16	NOP16	100.0	NA	2	NA	2	NA	2	NA	9.8	NA
Insulin-degrading enzyme	IDE	100.0	100.0	2	2	2	2	2	2	2.2	0.0
Isoform 5 of Cysteine-rich with EGF-like domain protein 2	CRELD2	100.0	NA	2	NA	2	NA	5	NA	0.0	NA
Bromodomain-containing protein 9	BRD9	99.9	NA	2	NA	2	NA	4	NA	0.0	NA
Alpha-enolase	ENO1	100.0	NA	2	NA	2	NA	2	NA	6.5	NA

Isoform 2 of MAP7 domain-containing protein 3	MAP7D3	100.0	NA	2	NA	2	NA	2	NA	3.1	NA
Pregnancy zone protein	PZP	100.0	100.0	8	8	9	8	12	11	13.3	13.6
von Willebrand factor A domain-containing protein 8	VWA8	100.0	NA	2	NA	2	NA	2	NA	0.0	NA
Protocadherin-15	PCDH15	100.0	NA	2	NA	2	NA	2	NA	1.2	NA
C-type lectin domain family 11 member A	CLEC11A	100.0	NA	2	NA	2	NA	3	NA	5.1	NA
Isoform 2 of Centrosomal protein of 170 kDa protein B	CEP170B	100.0	NA	2	NA	2	NA	2	NA	1.9	NA
Isoform 10 of Voltage-dependent T-type calcium channel subunit alpha-1G	CACNA1G	100.0	100.0	2	2	3	2	14	2	0.0	1.3
Zinc finger protein 770	ZNF770	100.0	NA	2	NA	2	NA	2	NA	4.2	NA
Isoform 2 of Treslin	TICRR	100.0	100.0	3	2	3	2	3	3	1.5	1.0
AT-rich interactive domain-containing protein 3B	ARID3B	100.0	NA	2	NA	2	NA	2	NA	0.0	NA
Kinectin	KTN1	100.0	100.0	2	2	2	2	2	3	2.0	0.0
Isoform 7 of cAMP-specific 3',5'-cyclic phosphodiesterase 4D	PDE4D	100.0	NA	2	NA	2	NA	2	NA	3.1	NA
Centromere protein F	CENPF	100.0	NA	3	NA	3	NA	4	NA	0.0	NA
Alpha-N-acetylglucosaminidase	NAGLU	100.0	100.0	2	3	3	3	4	4	5.1	7.1
Kinesin light chain 1	KLC1	100.0	NA	2	NA	2	NA	2	NA	0.0	NA
Unconventional myosin-XVI	MYO16	100.0	NA	2	NA	2	NA	2	NA	0.0	NA
Glyoxalase domain-containing protein 4	GLOD4	100.0	NA	2	NA	2	NA	2	NA	0.0	NA

Isoform 2 of Zinc finger CCCH domain-containing protein 13	ZC3H13	100.0	100.0	2	2	2	2	5	4	0.0	0.0
Tankyrase-2	TNKS2	100.0	NA	4	NA	4	NA	4	NA	6.3	NA
NEDD4-like E3 ubiquitin-protein ligase WWP2	WWP2	100.0	NA	3	NA	3	NA	3	NA	4.4	NA
Tissue alpha-L-fucosidase	FUCA1	100.0	100.0	2	2	3	3	3	3	4.7	4.7
ATP-binding cassette sub-family A member 3	ABCA3	100.0	NA	2	NA	3	NA	4	NA	0.0	NA
Isoform 2 of Voltage-dependent T-type calcium channel subunit alpha-1H	CACNA1H	100.0	100.0	2	2	2	2	2	2	0.0	0.0
Inactive dual specificity phosphatase 27	DUSP27	100.0	NA	3	NA	3	NA	3	NA	0.0	NA
Sulfhydryl oxidase 1	QSOX1	100.0	100.0	8	9	9	10	13	18	13.3	17.7
Isoform 3 of Xaa-Pro dipeptidase	PEPD	100.0	100.0	2	3	2	3	2	3	4.2	5.3
Isoform 3 of Ryanodine receptor 1	RYR1	100.0	NA	2	NA	2	NA	2	NA	0.0	NA
Isoform 3 of Golgin subfamily A member 4	GOLGA4	100.0	NA	2	NA	2	NA	2	NA	0.0	NA
CD44 antigen (Fragment)	CD44	100.0	100.0	2	2	2	2	6	5	8.8	8.4
Isoform F of Proteoglycan 4	PRG4	100.0	100.0	13	13	15	14	20	21	9.9	10.0
Isoform 2 of ATP-binding cassette sub-family G member 1	ABCG1	100.0	NA	3	NA	3	NA	3	NA	0.0	NA
Isoform 2 of Plasminogen activator inhibitor 1	SERPINE1	100.0	NA	2	NA	2	NA	2	NA	4.9	NA
Tolloid-like protein 2	TLL2	100.0	NA	3	NA	3	NA	4	NA	3.9	NA
Isoform 2 of E3 ubiquitin-protein ligase NEDD4	NEDD4	100.0	100.0	2	2	2	2	2	3	0.0	0.0
Hemoglobin subunit alpha	HBA1	100.0	100.0	2	4	4	8	7	14	16.9	48.6

Vacuolar protein sorting-associated protein 18 homolog	VPS18	100.0	NA	2	NA	2	NA	2	NA	2.2	NA
WASH complex subunit 7	KIAA1033	100.0	NA	2	NA	2	NA	2	NA	0.0	NA
Isoform 2 of Signal peptide, CUB and EGF-like domain-containing protein 2	SCUBE2	100.0	100.0	2	2	2	2	3	3	0.0	0.0
Probable JmjC domain-containing histone demethylation protein 2C	JMJD1C	100.0	100.0	3	2	3	2	4	2	1.5	0.0
Conserved oligomeric Golgi complex subunit 7	COG7	100.0	NA	2	NA	2	NA	2	NA	3.3	NA
Isoform 6 of Plectin	PLEC	100.0	100.0	4	4	4	4	6	4	0.8	0.9
Isoform 2 of PAS domain-containing serine/threonine-protein kinase	PASK	100.0	NA	2	NA	3	NA	10	NA	2.0	NA
Complement C1q subcomponent subunit C	C1QC	100.0	100.0	5	5	7	6	25	22	25.3	25.3
Erythroid transcription factor	GATA1	100.0	NA	2	NA	2	NA	2	NA	8.1	NA
Isoform 2 of DNA-dependent protein kinase catalytic subunit	PRKDC	100.0	100.0	5	4	5	4	5	8	0.0	0.0
ATP-binding cassette sub-family A member 2	ABCA2	100.0	NA	2	NA	2	NA	2	NA	1.3	NA
Keratin, type II cytoskeletal 1	KRT1	100.0	100.0	31	31	56	55	234	230	0.0	0.0
Carbonic anhydrase 1	CA1	100.0	100.0	10	9	15	13	51	47	52.9	46.0
Desmoglein-2	DSG2	100.0	100.0	3	3	3	3	4	3	3.9	3.5
Ubiquitin (Fragment)	RPS27A	100.0	NA	3	NA	4	NA	6	NA	32.1	NA
IgGFc-binding protein	FCGBP	100.0	100.0	12	12	13	13	17	18	3.1	3.2
Laminin subunit beta-1	LAMB1	100.0	100.0	2	2	2	2	6	2	0.0	1.6
DNA repair endonuclease XPF	ERCC4	100.0	NA	2	NA	2	NA	2	NA	2.2	NA
Isoform 2 of Teneurin-1	TENM1	100.0	NA	2		2		4	NA	0.0	NA

Mucin-5B	MUC5B	100.0	100.0	3	NA	3	NA	3	2	0.6	0.8
Soluble scavenger receptor cysteine-rich domain-containing protein SSC5D	SSC5D	100.0	100.0	2	2	2	2	3	2	1.8	1.8
FYVE and coiled-coil domain-containing protein 1	FYCO1	100.0	NA	2	NA	2	NA	3	NA	0.0	NA
Isoform 2 of Immunoglobulin superfamily member 1	IGSF1	100.0	NA	2	NA	2	NA	2	NA	0.0	NA
Leucine-rich repeat, immunoglobulin-like domain and transmembrane domain-containing protein 1	LRIT1	100.0	100.0	2	2	2	3	2	4	0.0	0.0
Isoform LMW of Kininogen-1	KNG1	100.0	100.0	3	26	4	49	28	289	54.1	54.1
Coronin-1A	CORO1A	100.0	100.0	2	2	2	2	2	2	5.6	5.6
Centromere-associated protein E	CENPE	100.0	NA	3	NA	3	NA	3	NA	1.3	NA
Pygopus homolog 1	PYGO1	100.0	NA	2	NA	2	NA	2	NA	3.3	NA
Phosphatidylcholine-sterol acyltransferase	LCAT	100.0	100.0	5	6	6	8	6	9	19.8	23.0
Glutamine-rich protein 2	QRICH2	100.0	100.0	2	3	2	3	2	3	1.3	0.0
Neurolysin, mitochondrial	NLN	100.0	NA	3	NA	3	NA	5	NA	4.8	NA
Isoform 2 of Gamma-2-syntrophin	SNTG2	100.0	NA	2	NA	2	NA	2	NA	7.0	NA
Platelet factor 4	PF4	100.0	100.0	4	4	9	9	40	35	35.6	35.6
Transmembrane protein 132C	TMEM132C	100.0	NA	2	NA	2	NA	2	NA	5.2	NA
Isoform 2 of Collagen alpha-1(VII) chain	COL7A1	100.0	100.0	2	2	2	2	2	2	0.0	1.0
SPARC	SPARC	100.0	100.0	3	4	3	4	5	5	11.6	15.5
Microtubule-associated protein	MAP4	100.0	100.0	2	2	2	2	7	5	2.5	2.5

Isoform 4 of Histone-lysine N-methyltransferase NSD3	WHSC1L1	100.0	NA	2	NA	2	NA	2	NA	0.0	NA
Beta-2-glycoprotein 1	APOH	100.0	100.0	17	17	29	30	212	220	58.0	58.0
Protein FAM179A	FAM179A	100.0	NA	2	NA	2	NA	2	NA	3.0	NA
Isoform 2 of Protein strawberry notch homolog 1	SBNO1	100.0	99.9	2	2	2	2	2	2	2.7	2.7
Vinculin	VCL	100.0	100.0	3	5	3	5	3	5	4.3	5.2
Platelet-derived growth factor receptor alpha	PDGFRA	100.0	NA	2	NA	2	NA	2	NA	2.6	NA
Interferon-induced, double-stranded RNA-activated protein kinase	EIF2AK2	100.0	100.0	2	2	3	2	3	4	0.0	0.0
Tensin-1	TNS1	100.0	NA	2	NA	2	NA	2	NA	0.0	NA
1-phosphatidylinositol 4,5-bisphosphate phosphodiesterase epsilon-1	PLCE1	100.0	100.0	3	3	4	3	7	8	0.0	2.0
Isoform 2 of Protein dopey-2	DOPEY2	100.0	NA	2	NA	2	NA	9	NA	0.0	NA
Transaldolase	TALDO1	100.0	100.0	3	2	3	2	3	2	8.6	6.2
Golgin subfamily A member 1	GOLGA1	100.0	NA	2	NA	2	NA	2	NA	0.0	NA
HEAT repeat-containing protein 5A	HEATR5A	100.0	NA	2	NA	2	NA	2	NA	0.9	NA
N-alpha-acetyltransferase 35, NatC auxiliary subunit	NAA35	100.0	NA	2	NA	2	NA	2	NA	0.0	NA
Transcription factor COE1	EBF1	99.9	NA	2	NA	2	NA	2	NA	0.0	NA
DNA mismatch repair protein Msh3	MSH3	100.0	100.0	3	3	3	3	4	7	4.7	4.7
Histone-lysine N-methyltransferase	SETMAR	100.0	NA	2	NA	2	NA	2	NA	0.0	NA

Regulating synaptic membrane exocytosis protein 1	RIMS1	100.0	NA	3	NA	3	NA	3	NA	0.0	NA
Isoform 2 of CDK5 regulatory subunit-associated protein 2	CDK5RAP2	100.0	100.0	2	2	3	2	3	2	1.5	2.1
Zinc finger protein 800	ZNF800	100.0	NA	2	NA	2	NA	2	NA	2.3	NA
Isoform 4 of Serine/threonine-protein kinase 40	STK40	100.0	100.0	2	2	2	2	3	2	7.7	7.7
Protein TANC2	TANC2	100.0	NA	2	NA	2	NA	2	NA	1.0	NA
Zinc finger protein with KRAB and SCAN domains 3	ZKSCAN3	100.0	NA	2	NA	2	NA	2	NA	3.9	NA
Hepatocyte growth factor activator	HGFAC	100.0	100.0	11	11	13	13	23	23	17.6	19.6
Apolipoprotein A-I	APOA1	100.0	100.0	33	33	78	78	1116	1038	75.7	76.4
Complement component C9	C9	100.0	100.0	19	21	30	36	118	129	41.3	41.9
Bromodomain and WD repeat-containing protein 1	BRWD1	100.0	NA	2	NA	2	NA	2	NA	0.8	NA
Hemicentin-2	HMCN2	100.0	100.0	2	3	2	3	2	3	0.4	0.0
Alpha-2-antiplasmin	SERPINF2	100.0	100.0	16	18	26	27	132	124	41.1	49.5
Putative uncharacterized protein CXorf49	CXorf49	100.0	100.0	2	2	3	2	3	4	7.8	7.8
Uncharacterized protein KIAA1551	KIAA1551	100.0	100.0	4	2	4	2	4	3	0.0	0.0
Isoform 4 of FH1/FH2 domain-containing protein 3	FHOD3	100.0	NA	2	NA	2	NA	2	NA	1.2	NA
Nebulette	NEBL	100.0	100.0	2	2	2	2	2	2	0.0	1.6
NFX1-type zinc finger-containing protein 1	ZNFX1	100.0	100.0	2	2	2	2	3	2	1.8	0.0
RasGAP-activating-like protein 1	RASAL1	99.9	NA	2	NA	2	NA	2	NA	3.6	NA
Lysine-specific demethylase 7	JHDM1D	100.0	NA	2	NA	2	NA	9	NA	0.0	NA

Transformer-2 protein homolog alpha	TRA2A	100.0	NA	2	NA	2	NA	2	NA	10.3	NA
Glucoside xylosyltransferase 2	GXYLT2	100.0	NA	2	NA	2	NA	2	NA	9.0	NA
DENN domain-containing protein 3	DENND3	100.0	100.0	2	2	2	2	5	4	0.0	0.0
Dynein heavy chain 6, axonemal	DNAH6	100.0	100.0	2	2	2	2	4	2	0.0	0.0
WD repeat-containing protein 60	WDR60	100.0	NA	2	NA	2	NA	2	NA	0.0	NA
Protein FAM13A	FAM13A	100.0	100.0	2	2	2	2	2	2	2.3	0.0
Prothrombin	F2	100.0	100.0	28	28	55	52	270	255	53.5	53.5
Isoform 3 of E3 ubiquitin-protein ligase TRIP12	TRIP12	100.0	NA	2	NA	2	NA	3	NA	0.9	NA
Isoform B of GC-rich sequence DNA-binding factor 1	GCFC1	100.0	NA	2	NA	2	NA	2	NA	0.0	NA
Lysozyme C	LYZ	100.0	100.0	4	4	4	6	23	25	38.5	38.5
Codanin-1	CDAN1	100.0	NA	2	NA	2	NA	3	NA	0.0	NA
Protein piccolo	PCLO	100.0	100.0	3	2	3	2	6	2	0.0	0.0
Ankyrin repeat domain-containing protein 34A	ANKRD34A	100.0	NA	2	NA	2	NA	2	NA	0.0	NA
AT-rich interactive domain-containing protein 3A	ARID3A	99.9	NA	2	NA	2	NA	5	NA	0.0	NA
TPR repeat-containing big gene cloned at Keio	TPRBK	100.0	NA	3	NA	3	NA	3	NA	0.0	NA
Isoform 3 of Pleckstrin homology domain-containing family G member 2	PLEKHG2	100.0	NA	2	NA	2	NA	2	NA	0.0	NA
Polyadenylate-binding protein 2	PABPN1	100.0	NA	2	NA	2	NA	2	NA	9.2	NA
Synaptonemal complex protein 2	SYCP2	100.0	NA	2	NA	2	NA	2	NA	0.0	NA
Integrin alpha-8	ITGA8	100.0	NA	2	NA	2	NA	2	NA	1.7	NA

Lysine-specific demethylase 3A	KDM3A	100.0	100.0	2	2	2	3	7	4	1.3	1.3
Laminin subunit alpha-1	LAMA1	100.0	NA	2	NA	2	NA	2	NA	0.9	NA
C-Maf-inducing protein	CMIP	100.0	100.0	2	2	3	3	8	7	0.0	0.0
Serine/threonine-protein phosphatase 6 regulatory ankyrin repeat subunit B	ANKRD44	NA	100.0	NA	2	NA	2	NA	2	NA	0.0
Stabilin-1	STAB1	NA	100.0	NA	2	NA	2	NA	3	NA	1.3
Isoform 2 of Regulation of nuclear pre-mRNA domain-containing protein 2	RPRD2	NA	100.0	NA	2	NA	2	NA	4	NA	0.0
Endonuclease ZRANB3	ZRANB3	NA	100.0	NA	2	NA	2	NA	5	NA	2.6
Rho-related BTB domain-containing protein 1	RHOBTB1	NA	100.0	NA	2	NA	2	NA	4	NA	4.9
Mucin-2	MUC2	NA	100.0	NA	2	NA	2	NA	2	NA	0.0
Tetratricopeptide repeat protein 16	TTC16	NA	100.0	NA	2	NA	2	NA	2	NA	2.4
Isoform 4 of E3 ubiquitin-protein ligase UBR2	UBR2	NA	100.0	NA	2	NA	2	NA	2	NA	1.1
Isoform 2 of RING finger protein 145	RNF145	NA	100.0	NA	2	NA	2	NA	2	NA	4.2
ADAMTS-like protein 3	ADAMTSL3	NA	100.0	NA	2	NA	2	NA	2	NA	0.0
Isoform 2 of Testis-specific chromodomain protein Y 1	CDY1	NA	100.0	NA	2	NA	2	NA	2	NA	4.3
Isoform 2 of Trinucleotide repeat-containing gene 6B protein	TNRC6B	NA	100.0	NA	2	NA	2	NA	2	NA	1.7
Zymogen granule protein 16 homolog B	ZG16B	NA	100.0	NA	3	NA	3	NA	3	NA	12.0
Inhibin beta C chain	INHBC	NA	100.0	NA	2	NA	2	NA	2	NA	5.4
Adenylate cyclase type 7	ADCY7	NA	100.0	NA	2	NA	2	NA	2	NA	0.0
Telomerase protein component 1	TEP1	NA	100.0	NA	2	NA	2	NA	2	NA	1.0
Multiple inositol polyphosphate phosphatase 1	MINPP1	NA	100.0	NA	2	NA	2	NA	2	NA	4.7
Isoform 2 of Asparagine synthetase [glutamine-hydrolyzing]	ASNS	NA	100.0	NA	2	NA	2	NA	2	NA	4.1

Protein RIC-3	RIC3	NA	100.0	NA	2	NA	2	NA	2	NA	5.7
E3 ubiquitin-protein ligase NEURL3	NEURL3	NA	100.0	NA	2	NA	2	NA	2	NA	11.1
WD repeat and FYVE domain-containing protein 3	WDFY3	NA	100.0	NA	2	NA	2	NA	4	NA	0.6
Isoform 2 of Ubiquitin carboxyl-terminal hydrolase 43	USP43	NA	99.9	NA	2	NA	2	NA	2	NA	5.0
Putative RNA-binding protein Luc7-like 2	LUC7L2	NA	100.0	NA	2	NA	2	NA	2	NA	11.0
RAB3GAP1 protein	RAB3GAP1	NA	100.0	NA	2	NA	2	NA	2	NA	2.3
Protein LOC388210 (Fragment)	LOC388210	NA	100.0	NA	3	NA	3	NA	3	NA	2.1
Carbonic anhydrase 2	CA2	NA	100.0	NA	3	NA	3	NA	3	NA	13.5
Isoform 3 of Protocadherin gamma-C3	PCDHGC3	NA	100.0	NA	2	NA	2	NA	3	NA	0.0
mTERF domain-containing protein 2	MTERFD2	NA	100.0	NA	2	NA	2	NA	2	NA	7.4
Zinc finger RNA-binding protein 2	ZFR2	NA	100.0	NA	2	NA	2	NA	4	NA	0.0
Isoform SERCA3A of Sarcoplasmic/endoplasmic reticulum calcium ATPase 3	ATP2A3	NA	100.0	NA	2	NA	2	NA	2	NA	0.0
Isoform 2 of Transcription cofactor HES-6	HES6	NA	100.0	NA	2	NA	2	NA	2	NA	7.9
Isoform 2 of Ankyrin repeat domain-containing protein 24	ANKRD24	NA	100.0	NA	2	NA	2	NA	2	NA	3.2
Epiplakin	EPPK1	NA	100.0	NA	5	NA	5	NA	5	NA	0.0
Diacylglycerol kinase alpha	DGKA	NA	100.0	NA	2	NA	2	NA	2	NA	4.6
BTB/POZ domain-containing protein 10	BTBD10	NA	100.0	NA	2	NA	2	NA	3	NA	5.1
Ubiquitin carboxyl-terminal hydrolase	USP19	NA	100.0	NA	2	NA	2	NA	2	NA	1.5
Phosphatidylinositol 3,4,5-trisphosphate-dependent Rac exchanger 1 protein	PREX1	NA	100.0	NA	2	NA	2	NA	2	NA	0.0
Isoform 2 of Centrosomal protein of 97 kDa	CEP97	NA	100.0	NA	3	NA	3	NA	3	NA	6.4

Isoform 10 of Voltage-dependent L-type calcium channel subunit alpha-1C	CACNA1C	NA	100.0	NA	2	NA	2	NA	6	NA	0.0
Sulfatase-modifying factor 2	SUMF2	NA	100.0	NA	2	NA	2	NA	3	NA	5.3
Myosin phosphatase Rho-interacting protein (Fragment)	MPRIP	NA	100.0	NA	2	NA	2	NA	2	NA	0.0
Insulin-like growth factor-binding protein 6	IGFBP6	NA	100.0	NA	2	NA	2	NA	3	NA	10.4
Ubiquitin-protein ligase E3A	UBE3A	NA	99.9	NA	2	NA	2	NA	2	NA	3.7
Fanconi anemia group A protein	FANCA	NA	100.0	NA	2	NA	2	NA	3	NA	1.8
Zinc finger protein ZPR1 (Fragment)	ZNF259	NA	100.0	NA	2	NA	2	NA	2	NA	3.0
Isoform 3 of PR domain zinc finger protein 2	PRDM2	NA	100.0	NA	2	NA	2	NA	2	NA	0.0
Cathepsin D	CTSD	NA	100.0	NA	2	NA	3	NA	4	NA	6.8
Isoform Short of Autism susceptibility gene 2 protein	AUTS2	NA	100.0	NA	2	NA	2	NA	2	NA	0.0
Cartilage matrix protein	MATN1	NA	100.0	NA	2	NA	2	NA	2	NA	0.0
DNA transposase THAP9	THAP9	NA	100.0	NA	2	NA	2	NA	2	NA	2.9
Centrosomal protein of 170 kDa (Fragment)	CEP170	NA	100.0	NA	3	NA	3	NA	3	NA	0.0
Progesterone-induced-blocking factor 1	PIBF1	NA	100.0	NA	2	NA	2	NA	2	NA	3.0
Isoform 2 of AT-hook-containing transcription factor	AKNA	NA	100.0	NA	2	NA	2	NA	2	NA	0.7
FRAS1-related extracellular matrix protein 2	FREM2	NA	100.0	NA	2	NA	2	NA	2	NA	1.1
Zinc finger CCHC domain-containing protein 2 (Fragment)	ZCCHC2	NA	100.0	NA	2	NA	2	NA	2	NA	2.2
Isoform 4 of Serine/threonine-protein kinase WNK2	WNK2	NA	100.0	NA	3	NA	3	NA	9	NA	0.0

Inter-alpha-trypsin inhibitor heavy chain H6	ITIH6	NA	100.0	NA	2	NA	2	NA	3	NA	0.0
Zinc finger protein 33A	ZNF33A	NA	100.0	NA	2	NA	2	NA	2	NA	0.0
Coiled-coil domain-containing protein 102A	CCDC102A	NA	100.0	NA	2	NA	2	NA	3	NA	4.0
Cutaneous T-cell lymphoma-associated antigen 5	CTAGE5	NA	100.0	NA	2	NA	2	NA	5	NA	1.5
Adipocyte enhancer-binding protein 1	AEBP1	NA	100.0	NA	2	NA	2	NA	2	NA	0.0
Isoform 6 of Papilin	PAPLN	NA	100.0	NA	2	NA	2	NA	2	NA	0.0
E3 ubiquitin-protein ligase MIB2	MIB2	NA	100.0	NA	2	NA	2	NA	2	NA	3.8
TIP41-like protein	TIPRL	NA	100.0	NA	2	NA	2	NA	2	NA	0.0
Coiled-coil domain-containing protein 150	CCDC150	NA	100.0	NA	2	NA	2	NA	2	NA	2.2
Slit homolog 1 protein	SLIT1	NA	100.0	NA	2	NA	2	NA	3	NA	2.0
Chitinase-3-like protein 1	CHI3L1	NA	100.0	NA	2	NA	2	NA	2	NA	0.0
GRB2-associated and regulator of MAPK protein-like	GAREML	NA	100.0	NA	2	NA	2	NA	3	NA	3.3
Isoform 2 of Importin-4	IPO4	NA	100.0	NA	2	NA	2	NA	2	NA	2.0
Zinc finger and BTB domain-containing protein 1	ZBTB1	NA	100.0	NA	2	NA	2	NA	2	NA	4.9
Zinc finger homeobox protein 2	ZFHX2	NA	100.0	NA	2	NA	2	NA	2	NA	1.9
Actin-related protein 5	ACTR5	NA	100.0	NA	2	NA	2	NA	6	NA	2.8
Kinesin-like protein KIF26B	KIF26B	NA	100.0	NA	2	NA	2	NA	2	NA	0.0
E3 ubiquitin-protein ligase TTC3	TTC3	NA	100.0	NA	2	NA	2	NA	2	NA	0.0
Isoform 6 of Fas-binding factor 1	FBF1	NA	100.0	NA	2	NA	2	NA	2	NA	1.8
Neuron navigator 3	NAV3	NA	100.0	NA	2	NA	2	NA	2	NA	1.0
Isoform 4 of Breast cancer type 1 susceptibility protein	BRCA1	NA	100.0	NA	4	NA	4	NA	7	NA	0.0
Dynein heavy chain 17, axonemal	DNAH17	NA	100.0	NA	4	NA	4	NA	4	NA	0.9
40S ribosomal protein S2	RPS2	NA	100.0	NA	2	NA	2	NA	2	NA	12.6

Zinc finger protein 518A	ZNF518A	NA	100.0	NA	2	NA	2	NA	2	NA	0.0
Isoform 2 of Uncharacterized protein KIAA1586	KIAA1586	NA	100.0	NA	2	NA	2	NA	2	NA	3.3
Ficolin-1	FCN1	NA	100.0	NA	2	NA	2	NA	2	NA	8.9
Pleckstrin homology domain-containing family H member 2	PLEKHH2	NA	100.0	NA	2	NA	2	NA	2	NA	0.0
Structural maintenance of chromosomes protein 1A	SMC1A	NA	100.0	NA	2	NA	2	NA	2	NA	2.1
Isoform 3 of Coiled-coil domain-containing protein 132	CCDC132	NA	100.0	NA	2	NA	2	NA	2	NA	0.0
V-type proton ATPase subunit S1	ATP6AP1	NA	100.0	NA	2	NA	2	NA	2	NA	4.7
MON2 protein	MON2	NA	100.0	NA	2	NA	2	NA	2	NA	1.0
Osteopetrosis-associated transmembrane protein 1	OSTM1	NA	100.0	NA	2	NA	2	NA	2	NA	9.0
Anoctamin-3	ANO3	NA	100.0	NA	2	NA	2	NA	2	NA	0.0
Uncharacterized protein C2orf16	C2orf16	NA	100.0	NA	2	NA	2	NA	3	NA	1.6
Zinc finger protein 471	ZNF471	NA	100.0	NA	2	NA	2	NA	2	NA	0.0
Isoform B of Annexin A13	ANXA13	NA	100.0	NA	2	NA	2	NA	7	NA	0.0
Periostin	POSTN	NA	100.0	NA	2	NA	2	NA	2	NA	3.2
Diacylglycerol kinase iota	DGKI	NA	100.0	NA	2	NA	2	NA	2	NA	4.0
Collagen alpha-1(III) chain	COL3A1	NA	100.0	NA	2	NA	2	NA	2	NA	0.0
Isoform 2 of Multidrug resistance-associated protein 1	ABCC1	NA	100.0	NA	2	NA	2	NA	5	NA	0.0
Isoform B of Disintegrin and metalloproteinase domain-containing protein 19	ADAM19	NA	100.0	NA	2	NA	2	NA	2	NA	0.0
tRNA (guanine(26)-N(2))-dimethyltransferase	TRMT1	NA	100.0	NA	2	NA	2	NA	6	NA	2.7
Microtubule-associated protein 1B	MAP1B	NA	100.0	NA	2	NA	2	NA	3	NA	0.0
Protein CBFA2T3	CBFA2T3	NA	100.0	NA	2	NA	2	NA	2	NA	3.9

G patch domain-containing protein 8	GPATCH8	NA	100.0	NA	3	NA	3	NA	4	NA	0.0
Roundabout homolog 3	ROBO3	NA	100.0	NA	2	NA	2	NA	2	NA	1.3
DNA mismatch repair protein Msh6	MSH6	NA	100.0	NA	2	NA	2	NA	2	NA	1.5
Reversion-inducing cysteine-rich protein with Kazal motifs	RECK	NA	100.0	NA	2	NA	2	NA	2	NA	3.6
HEAT repeat-containing protein 3	HEATR3	NA	100.0	NA	2	NA	2	NA	2	NA	0.0
Cullin-9	CUL9	NA	100.0	NA	2	NA	2	NA	2	NA	0.9
ATP-binding cassette sub-family F member 1	ABCF1	NA	99.9	NA	2	NA	2	NA	2	NA	0.0
Isoform 2 of Protocadherin gamma-A2	PCDHGA2	NA	99.9	NA	2	NA	2	NA	2	NA	0.0
Iporin	RUSC2	NA	100.0	NA	2	NA	2	NA	3	NA	2.8
Actin, alpha skeletal muscle	ACTA1	NA	100.0	NA	2	NA	2	NA	2	NA	26.8
Isoform 2 of Golgin subfamily B member 1	GOLGB1	NA	100.0	NA	2	NA	2	NA	2	NA	0.6
Isoform 3 of Cleavage and polyadenylation specificity factor subunit 7	CPSF7	NA	100.0	NA	2	NA	2	NA	2	NA	0.0
Down syndrome cell adhesion molecule-like protein 1	DSCAML1	NA	100.0	NA	2	NA	2	NA	2	NA	1.9
Isoform 2 of Angiomotin-like protein 1	AMOTL1	NA	100.0	NA	2	NA	2	NA	2	NA	2.4
Isoform 2 of Partitioning defective 3 homolog B	PARD3B	NA	100.0	NA	2	NA	2	NA	2	NA	0.0
Isoform 5 of Protein PRRC2C	PRRC2C	NA	100.0	NA	2	NA	2	NA	2	NA	1.0
DBIRD complex subunit ZNF326	ZNF326	NA	100.0	NA	3	NA	3	NA	4	NA	0.0
Isoform 3 of Unconventional prefoldin RPB5 interactor 1	URI1	NA	99.9	NA	2	NA	2	NA	2	NA	6.7
Endoplasmic reticulum metalloproteinase 1	ERMP1	NA	100.0	NA	2	NA	2	NA	2	NA	3.1
DDB1- and CUL4-associated factor 8	DCAF8	NA	100.0	NA	2	NA	2	NA	2	NA	0.0
Protein-tyrosine sulfotransferase 1	TPST1	NA	99.9	NA	2	NA	2	NA	2	NA	0.0

Coiled-coil domain-containing protein 175	CCDC175	NA	100.0	NA	2	NA	2	NA	2	NA	0.0
Filaggrin-2	FLG2	NA	100.0	NA	2	NA	2	NA	2	NA	0.9
Mannosyl-oligosaccharide 1,2-alpha-mannosidase IA	MAN1A1	NA	100.0	NA	2	NA	2	NA	3	NA	3.4
Adseverin	SCIN	NA	99.9	NA	2	NA	2	NA	4	NA	0.0
Isoform 1 of Leucine-rich repeat-containing G-protein coupled receptor 6	LGR6	NA	100.0	NA	2	NA	2	NA	2	NA	5.9
Sarcalumenin	SRL	NA	100.0	NA	2	NA	2	NA	2	NA	0.0
Isoform 3 of GON-4-like protein	GON4L	NA	100.0	NA	3	NA	3	NA	3	NA	1.8
Abnormal spindle-like microcephaly-associated protein	ASPM	NA	100.0	NA	3	NA	3	NA	3	NA	1.1
Myosin-7	MYH7	NA	100.0	NA	3	NA	3	NA	4	NA	2.0
Cornifin-A	SPRR1A	NA	100.0	NA	2	NA	2	NA	2	NA	18.0
Probable G-protein coupled receptor 125	GPR125	NA	100.0	NA	4	NA	4	NA	5	NA	0.0
Coiled-coil domain-containing protein 151	CCDC151	NA	100.0	NA	2	NA	2	NA	2	NA	0.0
Isoform 2 of ATP-citrate synthase	ACLY	NA	100.0	NA	2	NA	2	NA	2	NA	0.0
Prostaglandin-H2 D-isomerase (Fragment)	PTGDS	NA	100.0	NA	2	NA	2	NA	3	NA	15.5
Zinc finger protein 142	ZNF142	NA	100.0	NA	2	NA	2	NA	2	NA	0.0
Collagen alpha-1(VI) chain	COL6A1	NA	100.0	NA	2	NA	2	NA	2	NA	1.9
Isoform 3 of Histone-lysine N-methyltransferase MLL3	MLL3	NA	100.0	NA	3	NA	3	NA	3	NA	1.2
Kalirin	KALRN	NA	100.0	NA	2	NA	2	NA	2	NA	0.0
Receptor-type tyrosine-protein phosphatase beta	PTPRB	NA	100.0	NA	3	NA	3	NA	3	NA	1.8
Bromodomain adjacent to zinc finger domain protein 2B	BAZ2B	NA	100.0	NA	2	NA	2	NA	2	NA	0.0

Spermatogenesis-associated protein 31C1	SPATA31C1	NA	100.0	NA	2	NA	2	NA	2	NA	0.0
Double-stranded RNA-specific editase B2	ADARB2	NA	100.0	NA	2	NA	2	NA	2	NA	2.3
Flavin reductase (NADPH)	BLVRB	NA	100.0	NA	3	NA	3	NA	4	NA	23.8
Isoform BMP1-7 of Bone morphogenetic protein 1	BMP1	NA	100.0	NA	2	NA	2	NA	2	NA	2.6
Isoform ZA of Plasma membrane calcium-transporting ATPase 3	ATP2B3	NA	100.0	NA	2	NA	2	NA	2	NA	0.0
Huntingtin	HTT	NA	100.0	NA	2	NA	2	NA	2	NA	0.0
A disintegrin and metalloproteinase with thrombospondin motifs 20	ADAMTS20	NA	100.0	NA	2	NA	2	NA	2	NA	1.5
E3 ubiquitin-protein ligase HECW1	HECW1	NA	100.0	NA	2	NA	2	NA	3	NA	0.0
Isoform 2 of Receptor-type tyrosine-protein phosphatase F	PTPRF	NA	100.0	NA	5	NA	5	NA	5	NA	3.0
Putative protein FAM74A3	FAM74A3	NA	100.0	NA	2	NA	2	NA	2	NA	12.6
Transitional endoplasmic reticulum ATPase	VCP	NA	100.0	NA	2	NA	2	NA	2	NA	0.0
Isoform 3 of Uncharacterized protein C10orf68	C10orf68	NA	100.0	NA	2	NA	2	NA	4	NA	3.2
Isoform 1 of Metabotropic glutamate receptor 5	GRM5	NA	100.0	NA	2	NA	2	NA	2	NA	0.0
RNA-binding protein 44	RBM44	NA	100.0	NA	2	NA	2	NA	2	NA	0.0
Cell adhesion molecule 1 (Fragment)	CADM1	NA	100.0	NA	2	NA	2	NA	2	NA	6.3
Heterogeneous nuclear ribonucleoprotein L	HNRNPL	NA	100.0	NA	2	NA	2	NA	2	NA	4.2
APC membrane recruitment protein 2	AMER2	NA	100.0	NA	2	NA	2	NA	2	NA	0.0
Coatomer subunit gamma-2	COPG2	NA	99.9	NA	2	NA	2	NA	2	NA	3.1
Sarcoplasmic reticulum histidine-rich calcium-binding protein	HRC	NA	100.0	NA	2	NA	2	NA	2	NA	6.2

Sterile alpha motif domain-containing protein 9-like	SAMD9L	NA	100.0	NA	2	NA	2	NA	2	NA	1.7
Isoform 2 of Ectopic P granules protein 5 homolog	EPG5	NA	100.0	NA	2	NA	2	NA	2	NA	1.0
Myosin-3	MYH3	NA	100.0	NA	2	NA	2	NA	2	NA	0.0
Serine/threonine-protein kinase LMTK2	LMTK2	NA	100.0	NA	2	NA	2	NA	4	NA	1.6
Isoform 2 of Neuralized-like protein 4	NEURL4	NA	100.0	NA	2	NA	2	NA	2	NA	0.0
Aflatoxin B1 aldehyde reductase member 2	AKR7A2	NA	100.0	NA	2	NA	2	NA	3	NA	0.0
Probable E3 ubiquitin-protein ligase TRIML2	TRIML2	NA	100.0	NA	2	NA	2	NA	2	NA	0.0
ADP-ribosylation factor GTPase-activating protein 3	ARFGAP3	NA	100.0	NA	2	NA	2	NA	2	NA	8.1
Isoform 2 of Ras GTPase-activating protein SynGAP	SYNGAP1	NA	100.0	NA	2	NA	2	NA	2	NA	0.0
Zinc finger protein 615	ZNF615	NA	100.0	NA	2	NA	2	NA	2	NA	2.3
Metallophosphoesterase 1 (Fragment)	MPPE1	NA	100.0	NA	2	NA	2	NA	3	NA	6.8
Uncharacterized protein KIAA1522	KIAA1522	NA	100.0	NA	2	NA	2	NA	2	NA	1.3
Hydroxymethylglutaryl-CoA lyase, mitochondrial	HMGCL	NA	100.0	NA	2	NA	2	NA	2	NA	0.0
Acetyl-coenzyme A synthetase, cytoplasmic	ACSS2	NA	99.9	NA	2	NA	2	NA	3	NA	2.3
4F2 cell-surface antigen heavy chain	SLC3A2	NA	100.0	NA	2	NA	2	NA	3	NA	3.0
VPS10 domain-containing receptor SorCS2	SORCS2	NA	100.0	NA	2	NA	2	NA	2	NA	0.0
Thioredoxin reductase 2, mitochondrial	TXNRD2	NA	100.0	NA	2	NA	2	NA	2	NA	6.1
Serine/threonine-protein kinase pim-2	PIM2	NA	99.9	NA	2	NA	2	NA	3	NA	9.0
E3 ubiquitin-protein ligase Hakai	CBLL1	NA	100.0	NA	2	NA	2	NA	2	NA	35.8
Alpha-parvin	PARVA	NA	100.0	NA	2	NA	2	NA	4	NA	0.0

Zinc finger protein 543	ZNF543	NA	99.9	NA	2	NA	2	NA	2	NA	5.0
Isoform 2 of Semaphorin-7A	SEMA7A	NA	100.0	NA	2	NA	2	NA	2	NA	6.6
AT-rich interactive domain-containing protein 5B	ARID5B	NA	100.0	NA	3	NA	3	NA	6	NA	4.4
Isoform 4 of Mediator of RNA polymerase II transcription subunit 12-like protein	MED12L	NA	100.0	NA	2	NA	2	NA	2	NA	0.9
Complement receptor type 2	CR2	NA	100.0	NA	2	NA	2	NA	2	NA	3.0
Cohesin subunit SA-1	DKFZp781D1416	NA	100.0	NA	2	NA	2	NA	2	NA	1.9
Isoform 2 of Cyclic nucleotide-gated cation channel alpha-3	CNGA3	NA	100.0	NA	2	NA	2	NA	3	NA	3.4
von Willebrand factor A domain-containing protein 5B1	VWA5B1	NA	100.0	NA	2	NA	2	NA	2	NA	0.0
Isoform 4 of Myotubularin-related protein 5	SBF1	NA	100.0	NA	2	NA	2	NA	2	NA	0.0
Isoform 2 of General transcription factor 3C polypeptide 1	GTF3C1	NA	100.0	NA	2	NA	2	NA	2	NA	0.0
Sodium-driven chloride bicarbonate exchanger	SLC4A10	NA	100.0	NA	2	NA	2	NA	2	NA	1.7
Disks large homolog 2	DLG2	NA	99.9	NA	2	NA	2	NA	2	NA	4.9
Peptidyl-prolyl cis-trans isomerase A	PPIA	NA	100.0	NA	2	NA	2	NA	2	NA	10.9
Heterochromatin protein 1-binding protein 3	HP1BP3	NA	100.0	NA	2	NA	2	NA	3	NA	5.2
Double-strand break repair protein MRE11A	MRE11A	NA	100.0	NA	2	NA	2	NA	5	NA	2.4
Tripeptidyl-peptidase 2	TPP2	NA	100.0	NA	2	NA	2	NA	6	NA	2.0
Isoform 11 of Transient receptor potential cation channel subfamily M member 3	TRPM3	NA	100.0	NA	2	NA	2	NA	2	NA	2.0

Isoform 2 of Lipopolysaccharide-responsive and beige-like anchor protein	LRBA	NA	100.0	NA	2	NA	2	NA	3	NA	0.0
Telomerase reverse transcriptase	TERT	NA	100.0	NA	2	NA	2	NA	2	NA	0.0
Golgin subfamily A member 2	GOLGA2	NA	100.0	NA	2	NA	2	NA	2	NA	2.5
Isoform 4 of M-phase inducer phosphatase 2	CDC25B	NA	100.0	NA	2	NA	2	NA	3	NA	0.0
Isoform 2 of Ubiquitin carboxyl-terminal hydrolase 34	USP34	NA	100.0	NA	2	NA	2	NA	2	NA	0.0
HCG2033702, isoform CRA_a	PPAN	NA	100.0	NA	2	NA	2	NA	2	NA	0.0
Reticulon-4	RTN4	NA	100.0	NA	2	NA	2	NA	11	NA	2.3
PHD finger protein 12	PHF12	NA	100.0	NA	2	NA	2	NA	2	NA	2.9
Integrin alpha-11	ITGA11	NA	100.0	NA	2	NA	2	NA	8	NA	0.0
Histone-lysine N-methyltransferase MLL4	WBP7	NA	100.0	NA	2	NA	2	NA	2	NA	1.1
Fanconi anemia group J protein	BRIP1	NA	100.0	NA	2	NA	2	NA	2	NA	0.0
Isoform 3 of Thyroid adenoma-associated protein	THADA	NA	100.0	NA	3	NA	3	NA	3	NA	2.3
Myosin-6	MYH6	NA	100.0	NA	2	NA	2	NA	2	NA	0.0
Hamartin	TSC1	NA	100.0	NA	2	NA	2	NA	4	NA	1.5
Mediator of RNA polymerase II transcription subunit 23	MED23	NA	100.0	NA	3	NA	3	NA	6	NA	3.3
Protocadherin beta-9	PCDHB9	NA	100.0	NA	2	NA	2	NA	2	NA	0.0
Isoform 1 of NACHT, LRR and PYD domains-containing protein 3	NLRP3	NA	100.0	NA	2	NA	2	NA	3	NA	3.6
Tubulin polymerization-promoting protein family member 2 (Fragment)	TPPP2	NA	100.0	NA	2	NA	2	NA	2	NA	21.2
Isoform 2 of Dipeptidyl peptidase 9	DPP9	NA	100.0	NA	2	NA	2	NA	2	NA	2.5
Prolyl 3-hydroxylase 2	LEPREL1	NA	100.0	NA	2	NA	2	NA	2	NA	3.8
Apolipoprotein F	APOF	NA	100.0	NA	2	NA	2	NA	3	NA	7.7

Ryanodine receptor 3	RYR3	NA	100.0	NA	2	NA	2	NA	3	NA	0.0
Uncharacterized protein C5orf42	C5orf42	NA	100.0	NA	4	NA	4	NA	6	NA	0.0
Isoform 2 of ADP-ribosylation factor-like protein 6-interacting protein 4	ARL6IP4	NA	100.0	NA	2	NA	2	NA	2	NA	5.1
Protocadherin Fat 1	FAT1	NA	100.0	NA	2	NA	2	NA	2	NA	0.9
von Willebrand factor A domain-containing protein 2	VWA2	NA	100.0	NA	2	NA	2	NA	2	NA	2.5
Wings apart-like protein homolog	WAPAL	NA	100.0	NA	2	NA	2	NA	2	NA	0.0
Isoform 3 of Pro-neuregulin-2, membrane-bound isoform	NRG2	NA	100.0	NA	2	NA	2	NA	2	NA	3.4
Isoform PLD1D of Phospholipase D1	PLD1	NA	100.0	NA	2	NA	2	NA	2	NA	3.7
Ankyrin repeat domain-containing protein SOWAHD	SOWAHD	NA	99.9	NA	2	NA	2	NA	9	NA	7.6
Nuclear pore membrane glycoprotein 210-like	NUP210L	NA	100.0	NA	2	NA	2	NA	3	NA	1.1
Isoform 2 of Schlafen family member 14	SLFN14	NA	100.0	NA	2	NA	2	NA	2	NA	0.0
EMILIN-2	EMILIN2	NA	100.0	NA	2	NA	2	NA	2	NA	0.0
Insulinoma-associated protein 2	INSM2	NA	100.0	NA	2	NA	2	NA	3	NA	4.2
NADP-dependent malic enzyme, mitochondrial	ME3	NA	100.0	NA	2	NA	2	NA	2	NA	0.0
Poly [ADP-ribose] polymerase 1	PARP1	NA	100.0	NA	2	NA	2	NA	2	NA	0.0
Rho guanine nucleotide exchange factor 1	ARHGEF1	NA	100.0	NA	2	NA	2	NA	3	NA	0.0
Ubiquitin carboxyl-terminal hydrolase	USP15	NA	100.0	NA	2	NA	2	NA	2	NA	2.4
Uncharacterized protein C10orf12	C10orf12	NA	100.0	NA	2	NA	2	NA	2	NA	2.0
Uncharacterized protein C18orf8	C18orf8	NA	100.0	NA	2	NA	2	NA	2	NA	6.2
Probable G-protein coupled receptor 110	GPR110	NA	100.0	NA	2	NA	2	NA	2	NA	0.0
Isoform 2 of Mast/stem cell growth factor receptor Kit	KIT	NA	100.0	NA	2	NA	2	NA	3	NA	3.8

ATP-dependent RNA helicase DDX50	DDX50	NA	100.0	NA	2	NA	2	NA	2	NA	0.0
Cardiomyopathy-associated protein 5	CMYA5	NA	100.0	NA	2	NA	2	NA	3	NA	0.0
Serine/arginine repetitive matrix protein 2	SRRM2	NA	100.0	NA	2	NA	2	NA	2	NA	0.7
Mis18-binding protein 1	MIS18BP1	NA	100.0	NA	2	NA	2	NA	2	NA	1.7
Isoform 3 of Putative E3 ubiquitin-protein ligase UNKL	UNKL	NA	100.0	NA	2	NA	2	NA	2	NA	8.7
Alstrom syndrome protein 1	ALMS1	NA	100.0	NA	2	NA	2	NA	2	NA	0.0
Suppressor of tumorigenicity 14 protein	ST14	NA	100.0	NA	2	NA	2	NA	3	NA	2.0
Isoform 3 of Structural maintenance of chromosomes protein 1B	SMC1B	NA	100.0	NA	3	NA	3	NA	3	NA	3.9
NACHT, LRR and PYD domains-containing protein 4	NLRP4	NA	100.0	NA	2	NA	2	NA	2	NA	2.1
Isoform III of AT-rich interactive domain-containing protein 4A	ARID4A	NA	100.0	NA	3	NA	3	NA	3	NA	0.0
AT-rich interactive domain-containing protein 2	ARID2	NA	100.0	NA	2	NA	2	NA	2	NA	3.1
Conserved oligomeric Golgi complex subunit 1	COG1	NA	100.0	NA	3	NA	3	NA	4	NA	0.0
Isoform SV1 of Cyclin-dependent kinase 11A	CDK11A	NA	100.0	NA	2	NA	2	NA	2	NA	0.0
Zinc finger protein 799	ZNF799	NA	100.0	NA	2	NA	2	NA	2	NA	0.0
Protein FAM65A	FAM65A	NA	100.0	NA	2	NA	3	NA	3	NA	0.0
Gap junction alpha-10 protein	GJA10	NA	100.0	NA	2	NA	2	NA	2	NA	5.3
Isoform 3A of Myosin light chain kinase, smooth muscle	MYLK	NA	100.0	NA	2	NA	2	NA	2	NA	2.3
Leucine-rich repeat-containing protein 16C	RLTPR	NA	100.0	NA	2	NA	2	NA	2	NA	1.6
Isoform 2 of Putative ribosomal RNA methyltransferase NOP2	NOP2	NA	100.0	NA	3	NA	3	NA	3	NA	0.0

Secreted phosphoprotein 24	SPP2	NA	100.0	NA	2	NA	2	NA	2	NA	10.0
DNA damage-binding protein 1	DDB1	NA	100.0	NA	2	NA	2	NA	6	NA	0.0
F-box only protein 38	FBXO38	NA	100.0	NA	2	NA	2	NA	2	NA	2.4
Isoform 4 of Transcription factor 7-like 2	TCF7L2	NA	100.0	NA	2	NA	2	NA	3	NA	4.8
Isoform 2 of Protein arginine N-methyltransferase 1	PRMT1	NA	100.0	NA	2	NA	2	NA	3	NA	0.0
E3 ubiquitin-protein ligase MARCH7	MARCH7	NA	100.0	NA	2	NA	2	NA	2	NA	2.8
Lethal(2) giant larvae protein homolog 1	LLGL1	NA	100.0	NA	2	NA	2	NA	2	NA	2.7
Keratin-like protein KRT222	KRT222	NA	100.0	NA	2	NA	2	NA	2	NA	11.9
D site-binding protein	DBP	NA	100.0	NA	2	NA	2	NA	2	NA	5.2
Isoform 3 of Histone deacetylase complex subunit SAP130	SAP130	NA	100.0	NA	2	NA	2	NA	2	NA	3.0
Exostosin-like 3	EXTL3	NA	100.0	NA	2	NA	2	NA	3	NA	3.5
Junctophilin-4	JPH4	NA	100.0	NA	2	NA	2	NA	2	NA	2.1
Isoform 2 of Coiled-coil domain-containing protein 171	CCDC171	NA	100.0	NA	2	NA	2	NA	2	NA	1.4
Isoform 2 of Insulin-like growth factor II	IGF2	NA	100.0	NA	2	NA	3	NA	3	NA	13.7
Heat shock 70 kDa protein 4L	HSPA4L	NA	100.0	NA	2	NA	2	NA	2	NA	2.3
Probable phospholipid-transporting ATPase IF	ATP11B	NA	100.0	NA	2	NA	2	NA	2	NA	0.0
A disintegrin and metalloproteinase with thrombospondin motifs 5	ADAMTS5	NA	100.0	NA	2	NA	2	NA	2	NA	0.0
Isoform 3 of Myocardin	MYOCD	NA	100.0	NA	2	NA	2	NA	2	NA	0.0
Bifunctional protein NCOAT	MGEA5	NA	99.9	NA	2	NA	2	NA	2	NA	4.2
Isoform 2 of Heterogeneous nuclear ribonucleoprotein M	HNRNPM	NA	100.0	NA	2	NA	2	NA	2	NA	4.2
Isoform 3 of Mismatch repair endonuclease PMS2	PMS2	NA	100.0	NA	2	NA	2	NA	2	NA	4.4

Isoform 2 of Cyclin-dependent kinase-like 1	CDKL1	NA	100.0	NA	2	NA	2	NA	2	NA	1.3
Isoform 4 of Tyrosine-protein phosphatase non-receptor type 13	PTPN13	NA	100.0	NA	2	NA	2	NA	4	NA	0.0
Isoform 2 of Protein kintoun	DNAAF2	NA	100.0	NA	2	NA	2	NA	2	NA	3.9
E3 ubiquitin-protein ligase TRIM36	TRIM36	NA	100.0	NA	2	NA	2	NA	3	NA	0.0
Prolyl 4-hydroxylase subunit alpha-3	P4HA3	NA	100.0	NA	2	NA	2	NA	3	NA	7.0
Actin-binding LIM protein 2	ABLIM2	NA	100.0	NA	2	NA	2	NA	2	NA	0.0
Probable phospholipid-transporting ATPase IM	ATP8B4	NA	100.0	NA	3	NA	3	NA	3	NA	2.4
DNA replication factor Cdt1	CDT1	NA	100.0	NA	2	NA	2	NA	3	NA	3.7
RING finger protein 11	RNF11	NA	99.9	NA	2	NA	2	NA	2	NA	25.3
Heat shock 70 kDa protein 1-like	HSPA1L	NA	100.0	NA	2	NA	2	NA	2	NA	3.0
Isoform 2 of Golgin subfamily A member 3	GOLGA3	NA	100.0	NA	3	NA	3	NA	3	NA	2.7
Zinc finger protein 821	ZNF821	NA	100.0	NA	2	NA	2	NA	2	NA	0.0
Protein kinase C theta type	PRKCQ	NA	100.0	NA	2	NA	2	NA	2	NA	6.7
Actin-related protein 3	ACTR3	NA	100.0	NA	3	NA	3	NA	3	NA	17.0
Isoform 2 of Ephrin type-A receptor 5	EPHA5	NA	100.0	NA	2	NA	2	NA	3	NA	3.2
Phosphorylated CTD-interacting factor 1	PCIF1	NA	99.9	NA	2	NA	2	NA	2	NA	3.1
Isoform 2 of Serine/threonine-protein kinase 19	STK19	NA	100.0	NA	2	NA	2	NA	2	NA	7.4
TBC1 domain family member 8	TBC1D8	NA	100.0	NA	2	NA	2	NA	4	NA	1.8
E3 ubiquitin-protein ligase RNF169	RNF169	NA	100.0	NA	2	NA	2	NA	2	NA	3.1
Pseudouridylate synthase 7 homolog	PUS7	NA	100.0	NA	2	NA	2	NA	2	NA	0.0
Out at first protein homolog	OAF	NA	100.0	NA	2	NA	3	NA	4	NA	9.5
Midnolin	MIDN	NA	100.0	NA	2	NA	2	NA	2	NA	0.0
Brain-specific angiogenesis inhibitor 1	BAI1	NA	100.0	NA	2	NA	2	NA	2	NA	0.0

BAH and coiled-coil domain-containing protein 1	BAHCC1	NA	100.0	NA	2	NA	2	NA	2	NA	0.0
Isoform 3 of Vacuolar protein sorting-associated protein 13C	VPS13C	NA	100.0	NA	2	NA	2	NA	3	NA	0.0
Sterol regulatory element-binding protein 2	SREBF2	NA	100.0	NA	2	NA	2	NA	3	NA	0.0
Otogelin	OTOG	NA	100.0	NA	2	NA	2	NA	2	NA	0.0
Bile salt export pump	ABCB11	NA	100.0	NA	2	NA	2	NA	3	NA	0.0
Retrotransposon gag domain-containing protein 1	RGAG1	NA	100.0	NA	3	NA	3	NA	6	NA	3.5
PH-interacting protein	PHIP	NA	100.0	NA	2	NA	2	NA	2	NA	0.0
Isoform 4 of Coiled-coil domain-containing protein 136	CCDC136	NA	100.0	NA	3	NA	3	NA	7	NA	0.0
U2 small nuclear ribonucleoprotein auxiliary factor 35 kDa subunit-related protein 1	ZRSR1	NA	100.0	NA	2	NA	2	NA	3	NA	6.1
Isoform 2 of DNA topoisomerase 2-alpha	TOP2A	NA	100.0	NA	3	NA	3	NA	5	NA	2.2
Keratin, type II cytoskeletal 3	KRT3	NA	100.0	NA	2	NA	2	NA	2	NA	0.0
Isoform 3 of Platelet glycoprotein VI	GP6	NA	100.0	NA	2	NA	2	NA	2	NA	3.7
Isoform 2 of Creatine kinase U-type, mitochondrial	CKMT1A	NA	100.0	NA	2	NA	2	NA	3	NA	4.5
Corepressor interacting with RBPJ 1	CIR1	NA	100.0	NA	2	NA	2	NA	2	NA	0.0
Isoform 2 of Histone-lysine N-methyltransferase EZH1	EZH1	NA	100.0	NA	2	NA	2	NA	3	NA	0.0
Transcription factor E3	TFE3	NA	100.0	NA	2	NA	2	NA	3	NA	3.5
2-oxoglutarate dehydrogenase, mitochondrial	OGDH	NA	100.0	NA	2	NA	2	NA	2	NA	0.0
Heterogeneous nuclear ribonucleoprotein A1	HNRNPA1	NA	100.0	NA	2	NA	2	NA	2	NA	13.8

Brefeldin A-inhibited guanine nucleotide-exchange protein 2	ARFGEF2	NA	100.0	NA	2	NA	2	NA	2	NA	0.0
Isoform 2 of N-acetylserotonin O-methyltransferase-like protein	ASMTL	NA	100.0	NA	2	NA	2	NA	2	NA	3.8
Dedicator of cytokinesis protein 11	DOCK11	NA	100.0	NA	2	NA	2	NA	3	NA	0.8
Isoform 2 of ELKS/Rab6-interacting/CAST family member 1	ERC1	NA	100.0	NA	2	NA	2	NA	2	NA	1.8
DNA helicase INO80	INO80	NA	100.0	NA	2	NA	2	NA	2	NA	1.5
Protein HEG homolog 1	HEG1	NA	100.0	NA	2	NA	2	NA	2	NA	0.0
Baculoviral IAP repeat-containing protein 6	BIRC6	NA	100.0	NA	2	NA	2	NA	2	NA	0.6
CUB and sushi domain-containing protein 1	CSMD1	NA	100.0	NA	2	NA	2	NA	2	NA	0.0
P2X purinoceptor	P2RX4	NA	99.9	NA	2	NA	2	NA	2	NA	13.2
Ubiquitin carboxyl-terminal hydrolase 1	USP1	NA	100.0	NA	2	NA	2	NA	4	NA	2.9
60S ribosomal protein L26 (Fragment)	RPL26	NA	100.0	NA	2	NA	2	NA	2	NA	11.3
Isoform 2 of Serine/threonine-protein kinase ATR	ATR	NA	100.0	NA	2	NA	2	NA	2	NA	0.0
Programmed cell death 6-interacting protein	PDCD6IP	NA	100.0	NA	2	NA	2	NA	2	NA	2.2
AN1-type zinc finger protein 5 (Fragment)	ZFAND5	NA	100.0	NA	2	NA	2	NA	2	NA	16.6
Isoform 3 of Neurabin-1	PPP1R9A	NA	100.0	NA	2	NA	2	NA	2	NA	0.0
Grainyhead-like protein 1 homolog	GRHL1	NA	100.0	NA	2	NA	2	NA	2	NA	0.0
Phosphoribosylformylglycinamide synthase	PFAS	NA	100.0	NA	2	NA	2	NA	2	NA	1.9
Hydrocephalus-inducing protein homolog	HYDIN	NA	100.0	NA	2	NA	2	NA	2	NA	0.0
Limb region 1 protein homolog	LMBR1	NA	100.0	NA	2	NA	3	NA	7	NA	44.4

Isoform 2 of p53-induced protein with a death domain	PIDD	NA	100.0	NA	2	NA	2	NA	2	NA	2.5
Rab GTPase-binding effector protein 1	RABEP1	NA	100.0	NA	2	NA	2	NA	3	NA	0.0
Kinesin-like protein KIF26A	KIF26A	NA	100.0	NA	3	NA	3	NA	3	NA	1.4
Isoform 2 of Bcl-2-associated transcription factor 1	BCLAF1	NA	100.0	NA	2	NA	2	NA	3	NA	0.0
GEM-interacting protein	GMIP	NA	100.0	NA	2	NA	2	NA	2	NA	2.0
Protein disulfide-isomerase A4	PDIA4	NA	100.0	NA	2	NA	2	NA	2	NA	0.0
Type I inositol 3,4-bisphosphate 4-phosphatase	INPP4A	NA	100.0	NA	3	NA	3	NA	3	NA	4.7
Collagen alpha-1(XVI) chain	COL16A1	NA	100.0	NA	2	NA	2	NA	2	NA	0.0
Integrator complex subunit 1	INTS1	NA	100.0	NA	2	NA	2	NA	2	NA	0.0
Dorsal root ganglia homeobox protein	DRGX	NA	100.0	NA	2	NA	2	NA	2	NA	10.1
Isoform 2 of Solute carrier family 35 member F3	SLC35F3	NA	100.0	NA	2	NA	2	NA	2	NA	0.0
Isoform 2 of Triosephosphate isomerase	TPI1	NA	100.0	NA	3	NA	3	NA	3	NA	23.3
Isoform 2 of Latrophilin-1	LPHN1	NA	100.0	NA	2	NA	2	NA	2	NA	0.0
Isoform 2 of Host cell factor 1	HCFC1	NA	100.0	NA	2	NA	2	NA	2	NA	0.0
NK-tumor recognition protein	NKTR	NA	100.0	NA	2	NA	2	NA	3	NA	0.0
Doublecortin domain-containing protein 5	DCDC5	NA	100.0	NA	2	NA	2	NA	3	NA	1.4
Insulin-like growth factor-binding protein 5	IGFBP5	NA	100.0	NA	2	NA	2	NA	2	NA	9.2
Isoform 2 of DNA (cytosine-5)-methyltransferase 1	DNMT1	NA	100.0	NA	3	NA	3	NA	6	NA	2.4
General transcription factor 3C polypeptide 3	GTF3C3	NA	100.0	NA	2	NA	2	NA	2	NA	0.0
Isoform 3 of Fermitin family homolog 2	FERMT2	NA	100.0	NA	2	NA	2	NA	2	NA	0.0
Isoform 4 of WD repeat- and FYVE domain-containing protein 4	WDFY4	NA	100.0	NA	2	NA	2	NA	2	NA	0.0

Phosphatidylinositol 4-phosphate 3-kinase C2 domain-containing subunit beta	PIK3C2B	NA	100.0	NA	2	NA	2	NA	3	NA	1.5
Isoform 2 of OTU domain-containing protein 7A	OTUD7A	NA	100.0	NA	2	NA	2	NA	2	NA	0.0
Isoform 4 of Uncharacterized protein KIAA1109	KIAA1109	NA	100.0	NA	4	NA	4	NA	4	NA	0.0
Leucine-rich repeats and immunoglobulin-like domains protein 1	LRIG1	NA	100.0	NA	2	NA	2	NA	2	NA	2.7
Acetyl-CoA acetyltransferase, mitochondrial	ACAT1	NA	100.0	NA	2	NA	2	NA	2	NA	0.0
Uncharacterized protein KIAA0556	KIAA0556	NA	100.0	NA	3	NA	3	NA	5	NA	1.9
Hypoxia up-regulated protein 1	HYOU1	NA	100.0	NA	2	NA	2	NA	2	NA	2.1
Secretogranin-2	SCG2	NA	100.0	NA	2	NA	2	NA	2	NA	3.1
Proline dehydrogenase 1, mitochondrial	PRODH	NA	100.0	NA	2	NA	2	NA	2	NA	0.0
Partner and localizer of BRCA2	PALB2	NA	100.0	NA	2	NA	2	NA	4	NA	0.0
ADAMTS-like protein 1	ADAMTSL1	NA	100.0	NA	2	NA	2	NA	2	NA	0.0
Isoform 2 of Zinc finger protein 568	ZNF568	NA	99.9	NA	2	NA	2	NA	2	NA	0.0
Isoform 2 of Striatin	STRN	NA	100.0	NA	2	NA	2	NA	2	NA	0.0
Sister chromatid cohesion protein PDS5 homolog A	PDS5A	NA	100.0	NA	2	NA	2	NA	2	NA	1.4
Neurexin-2	NRXN2	NA	100.0	NA	2	NA	2	NA	3	NA	1.2
Nucleolar MIF4G domain-containing protein 1	NOM1	NA	100.0	NA	2	NA	2	NA	2	NA	0.0
Isoform 2 of Exophilin-5	EXPH5	NA	100.0	NA	2	NA	2	NA	2	NA	0.9
DOCK10.2	DOCK10.2	NA	100.0	NA	2	NA	2	NA	5	NA	0.0
DNA polymerase nu	POLN	NA	100.0	NA	2	NA	2	NA	2	NA	3.1
Signal peptide, CUB and EGF-like domain-containing protein 1	SCUBE1	NA	100.0	NA	2	NA	2	NA	2	NA	0.0
PRMT2 alpha variant	PRMT2	NA	100.0	NA	2	NA	2	NA	2	NA	6.6

Lysine-specific demethylase 6A	KDM6A	NA	100.0	NA	2	NA	2	NA	2	NA	1.3
Retinoic acid receptor responder protein 2	RARRES2	NA	100.0	NA	3	NA	3	NA	4	NA	21.5
Tetratricopeptide repeat protein GNN	GNN	NA	100.0	NA	2	NA	2	NA	2	NA	0.0
Importin-7	IPO7	NA	100.0	NA	2	NA	2	NA	2	NA	4.1
Alpha-actinin-4	ACTN4	NA	100.0	NA	2	NA	2	NA	2	NA	0.0
Voltage-dependent R-type calcium channel subunit alpha-1E	CACNA1E	NA	100.0	NA	2	NA	2	NA	2	NA	1.3
Isoform 2 of Sialoadhesin	SIGLEC1	NA	100.0	NA	2	NA	2	NA	2	NA	0.0
Ubinuclein-2	UBN2	NA	100.0	NA	2	NA	2	NA	2	NA	1.6
Teneurin-4	TENM4	NA	100.0	NA	2	NA	2	NA	2	NA	1.1
Centrosomal protein of 135 kDa	CEP135	NA	100.0	NA	2	NA	2	NA	2	NA	0.0
Peptidyl-prolyl cis-trans isomerase B	PPIB	NA	100.0	NA	2	NA	2	NA	2	NA	7.4
Serine/threonine-protein kinase LMTK1	AATK	NA	100.0	NA	3	NA	3	NA	4	NA	2.7
Isoform 3 of GRAM domain-containing protein 1A	GRAMD1A	NA	100.0	NA	2	NA	2	NA	2	NA	3.1
Isoform 2 of WD repeat-containing protein 35	WDR35	NA	100.0	NA	2	NA	2	NA	2	NA	2.7
Coiled-coil domain-containing protein 96	CCDC96	NA	100.0	NA	2	NA	2	NA	2	NA	0.0
Transferrin receptor protein 1	TFRC	NA	100.0	NA	2	NA	2	NA	3	NA	3.0
Myomegalin	PDE4DIP	NA	100.0	NA	3	NA	3	NA	3	NA	1.4
Isoform 3 of Apolipoprotein B receptor	APOBR	NA	100.0	NA	4	NA	4	NA	4	NA	3.7
Annexin A10	ANXA10	NA	100.0	NA	2	NA	2	NA	2	NA	9.0
Unconventional myosin-Vc	MYO5C	NA	100.0	NA	2	NA	2	NA	2	NA	0.0
Protein FAM65C	FAM65C	NA	100.0	NA	2	NA	2	NA	2	NA	2.5
Isoform 2 of Protein atonal homolog 8	ATOH8	NA	100.0	NA	2	NA	2	NA	2	NA	8.2
Isoform 2 of TGF-beta receptor type-2	TGFBR2	NA	100.0	NA	2	NA	2	NA	3	NA	5.2
Isoform 2 of Rhophilin-1	RHPN1	NA	100.0	NA	2	NA	2	NA	5	NA	0.0

Isoform 2 of BEN domain-containing protein 2	BEND2	NA	99.9	NA	2	NA	3	NA	3	NA	4.8
E3 ubiquitin-protein ligase HERC2	HERC2	NA	100.0	NA	3	NA	4	NA	5	NA	0.0
Tyrosine-protein kinase Fer	FER	NA	100.0	NA	2	NA	2	NA	3	NA	0.0
Vascular endothelial growth factor receptor 3	FLT4	NA	100.0	NA	3	NA	3	NA	5	NA	4.0
SMT3 suppressor of mif two 3 homolog 3 (Yeast), isoform CRA_d	SUMO3	NA	100.0	NA	2	NA	2	NA	2	NA	24.4
StAR-related lipid transfer protein 9	STARD9	NA	100.0	NA	3	NA	3	NA	4	NA	0.0
Isoform 2 of Tripartite motif-containing protein 55	TRIM55	NA	100.0	NA	3	NA	3	NA	4	NA	5.8
Disco-interacting protein 2 homolog A	DIP2A	NA	100.0	NA	3	NA	3	NA	3	NA	0.0
Meiosis arrest female protein 1	KIAA0430	NA	100.0	NA	2	NA	2	NA	2	NA	0.0
E3 ubiquitin-protein ligase DZIP3	DZIP3	NA	100.0	NA	2	NA	2	NA	2	NA	0.0
Twisted gastrulation protein homolog 1	TWSG1	NA	100.0	NA	2	NA	2	NA	2	NA	17.9
Ezrin	EZR	NA	100.0	NA	2	NA	2	NA	2	NA	3.8
Band 4.1-like protein 2	EPB41L2	NA	100.0	NA	2	NA	2	NA	2	NA	2.9
Diacylglycerol kinase kappa	DGKK	NA	100.0	NA	2	NA	2	NA	3	NA	1.4
Isoform 5 of Maestro heat-like repeat-containing protein family member 7	MROH7	NA	100.0	NA	2	NA	2	NA	3	NA	2.5
Isoform 2 of Testis-specific serine kinase substrate	TSKS	NA	99.9	NA	2	NA	2	NA	2	NA	0.0
Voltage-dependent T-type calcium channel subunit alpha-1I	CACNA1I	NA	100.0	NA	2	NA	2	NA	2	NA	1.0
Isoform 2 of Probable ATP-dependent RNA helicase DDX4	DDX4	NA	100.0	NA	2	NA	2	NA	3	NA	0.0
Isoform 3 of Acid-sensing ion channel 4	ASIC4	NA	100.0	NA	2	NA	2	NA	2	NA	5.9
Isoform 2 of Zinc finger homeobox protein 4	ZFHX4	NA	100.0	NA	2	NA	2	NA	2	NA	0.0

Steroid 17-alpha-hydroxylase/17,20 lyase	CYP17A1	NA	100.0	NA	2	NA	2	NA	5	NA	0.0
Isoform 6 of Transcription factor TFIIB component B" homolog	BDP1	NA	100.0	NA	2	NA	2	NA	2	NA	0.0
Isoform 5 of Putative helicase Mov10I1	MOV10L1	NA	100.0	NA	2	NA	2	NA	3	NA	0.0
Isoform 2 of Ral GTPase-activating protein subunit alpha-1	RALGAPA1	NA	100.0	NA	2	NA	2	NA	2	NA	0.9
Dynein heavy chain 5, axonemal	DNAH5	NA	100.0	NA	4	NA	4	NA	4	NA	0.0
T-box transcription factor TBX2	TBX2	NA	100.0	NA	2	NA	2	NA	2	NA	3.2
Probable G-protein coupled receptor 19	GPR19	NA	99.9	NA	2	NA	2	NA	2	NA	5.1
SHC-transforming protein 3	SHC3	NA	100.0	NA	2	NA	2	NA	2	NA	0.0
DENN domain-containing protein 5A	DENND5A	NA	100.0	NA	2	NA	2	NA	2	NA	2.0
Isoform 2 of Bromodomain adjacent to zinc finger domain protein 1A	BAZ1A	NA	100.0	NA	2	NA	2	NA	2	NA	0.0
Serum amyloid A-2 protein	SAA2	NA	100.0	NA	2	NA	2	NA	2	NA	51.6
Dystrophia myotonica WD repeat-containing protein	DMWD	NA	100.0	NA	2	NA	2	NA	2	NA	3.9
Isoform 2 of Cytoskeleton-associated protein 5	CKAP5	NA	100.0	NA	2	NA	2	NA	5	NA	1.2
NACHT, LRR and PYD domains-containing protein 7	NLRP7	NA	100.0	NA	2	NA	2	NA	4	NA	0.0
Probable E3 ubiquitin-protein ligase HECTD4	HECTD4	NA	100.0	NA	2	NA	2	NA	2	NA	0.0
Motile sperm domain-containing protein 2	MOSPD2	NA	100.0	NA	2	NA	2	NA	2	NA	0.0
Uncharacterized protein C1orf65	C1orf65	NA	100.0	NA	2	NA	2	NA	2	NA	0.0
Collagen alpha-1(XV) chain	COL15A1	NA	100.0	NA	2	NA	2	NA	2	NA	0.0
Protein FAM87A	FAM87A	NA	100.0	NA	2	NA	2	NA	3	NA	9.8
Serine/threonine-protein kinase SMG1	SMG1	NA	100.0	NA	2	NA	2	NA	2	NA	0.0

ATPase family AAA domain-containing protein 5	ATAD5	NA	100.0	NA	2	NA	2	NA	2	NA	0.0
Probable E3 ubiquitin-protein ligase RNF144A	RNF144A	NA	100.0	NA	3	NA	3	NA	3	NA	8.9
Short transient receptor potential channel 4-associated protein	TRPC4AP	NA	100.0	NA	2	NA	2	NA	2	NA	0.0
Isoform 2 of PHD finger protein 3	PHF3	NA	100.0	NA	3	NA	3	NA	3	NA	0.0
Ubiquitin carboxyl-terminal hydrolase 48	USP48	NA	100.0	NA	2	NA	2	NA	2	NA	0.0
Methionine--tRNA ligase, mitochondrial	MARS2	NA	100.0	NA	2	NA	2	NA	2	NA	4.1
Isoform 2 of Polycystin-1	PKD1	NA	100.0	NA	2	NA	2	NA	3	NA	0.4
Angiotensin-related protein 6	ANGPTL6	NA	100.0	NA	2	NA	2	NA	2	NA	0.0
Serine-rich coiled-coil domain-containing protein 1	CCSER1	NA	100.0	NA	2	NA	2	NA	2	NA	2.3
Isoform 4 of Tensin-like C1 domain-containing phosphatase	TENC1	NA	100.0	NA	2	NA	2	NA	2	NA	1.9
Probable ATP-dependent RNA helicase DDX27	DDX27	NA	100.0	NA	3	NA	4	NA	6	NA	3.0
Uncharacterized protein C16orf71	C16orf71	NA	100.0	NA	2	NA	2	NA	2	NA	5.8
Kelch-like protein 22 (Fragment)	KLHL22	NA	100.0	NA	3	NA	3	NA	3	NA	12.3
Arginine-glutamic acid dipeptide (RE) repeats, isoform CRA_b	RERE	NA	100.0	NA	2	NA	2	NA	3	NA	0.0
UPF0606 protein KIAA1549L	KIAA1549L	NA	100.0	NA	2	NA	2	NA	2	NA	2.0
Lariat debranching enzyme	DBR1	NA	100.0	NA	2	NA	2	NA	5	NA	4.0
Hyccin (Fragment)	FAM126A	NA	100.0	NA	2	NA	2	NA	2	NA	4.7
Receptor-transporting protein 3	RTP3	NA	99.9	NA	2	NA	3	NA	3	NA	15.1
Isoform 2 of Lysine-specific demethylase 5D	KDM5D	NA	100.0	NA	3	NA	3	NA	3	NA	2.0
E3 ubiquitin-protein ligase SHPRH	SHPRH	NA	100.0	NA	2	NA	3	NA	6	NA	1.4

RNA binding motif protein, X-linked-like-1	RBMXL1	NA	100.0	NA	2	NA	2	NA	2	NA	0.0
MAX gene-associated protein	MGA	NA	100.0	NA	3	NA	3	NA	3	NA	0.0
V-type proton ATPase 116 kDa subunit a isoform 4	ATP6V0A4	NA	100.0	NA	2	NA	2	NA	2	NA	0.0
Fibrillin-1	FBN1	NA	100.0	NA	2	NA	2	NA	2	NA	0.0
Fructose-bisphosphate aldolase B	ALDOB	NA	100.0	NA	2	NA	3	NA	3	NA	7.1
RNA polymerase I-specific transcription initiation factor RRN3	RRN3	NA	100.0	NA	2	NA	2	NA	3	NA	0.0
Cullin-5	CUL5	NA	100.0	NA	2	NA	2	NA	4	NA	2.8
Collagen alpha-1(IV) chain	COL4A1	NA	100.0	NA	2	NA	2	NA	2	NA	2.2
DNA replication licensing factor MCM6	MCM6	NA	100.0	NA	2	NA	2	NA	2	NA	3.3
Isoform 3a of Neurexin-1	NRXN1	NA	100.0	NA	2	NA	2	NA	2	NA	1.7
Pinin	PNN	NA	100.0	NA	2	NA	2	NA	2	NA	6.7
Cytochrome P450 4A11	CYP4A11	NA	100.0	NA	2	NA	2	NA	2	NA	4.4
Glutamate dehydrogenase 2, mitochondrial	GLUD2	NA	100.0	NA	3	NA	3	NA	3	NA	0.0
Midasin	MDN1	NA	100.0	NA	2	NA	2	NA	2	NA	0.4
Proto-oncogene vav	VAV1	NA	100.0	NA	2	NA	2	NA	2	NA	2.3
Isoform 2 of Contactin-1	CNTN1	NA	100.0	NA	3	NA	3	NA	3	NA	3.6
Dual specificity protein phosphatase 5	DUSP5	NA	100.0	NA	2	NA	2	NA	3	NA	0.0
X-linked retinitis pigmentosa GTPase regulator-interacting protein 1	RPGRIP1	NA	100.0	NA	3	NA	3	NA	3	NA	4.0
Isoform 3 of ATP-dependent DNA helicase PIF1	PIF1	NA	100.0	NA	2	NA	2	NA	2	NA	4.1
Isoform 2 of Tyrosine-protein kinase BAZ1B	BAZ1B	NA	100.0	NA	2	NA	2	NA	2	NA	1.8
Oral-facial-digital syndrome 1 protein	OFD1	NA	100.0	NA	3	NA	3	NA	3	NA	4.5
Protein FAM186A	FAM186A	NA	100.0	NA	2	NA	2	NA	2	NA	0.0
Transgelin-2	TAGLN2	NA	100.0	NA	3	NA	3	NA	3	NA	18.6

Isoform 2 of 4-hydroxyphenylpyruvate dioxygenase	HPD	NA	99.9	NA	2	NA	2	NA	2	NA	0.0
Eukaryotic translation initiation factor 3 subunit C	EIF3C	NA	100.0	NA	2	NA	2	NA	2	NA	4.4
ATP-binding cassette sub-family A member 13	ABCA13	NA	100.0	NA	2	NA	2	NA	2	NA	0.3
Zinc finger protein 62 homolog	ZFP62	NA	100.0	NA	2	NA	2	NA	2	NA	0.0
Patched domain-containing protein 2	PTCHD2	NA	100.0	NA	2	NA	2	NA	2	NA	0.0
Isoform 4 of Dynein heavy chain 1, axonemal	DNAH1	NA	100.0	NA	2	NA	2	NA	2	NA	0.5
Matrix-remodeling-associated protein 5	MXRA5	NA	100.0	NA	2	NA	2	NA	2	NA	0.0
Isoform 2 of Protein virilizer homolog	KIAA1429	NA	100.0	NA	2	NA	2	NA	2	NA	0.0
Isoform 3 of Calmodulin-regulated spectrin-associated protein 1	CAMSAP1	NA	100.0	NA	2	NA	2	NA	2	NA	1.7
Collagen alpha-2(XI) chain	COL11A2	NA	100.0	NA	3	NA	3	NA	4	NA	3.5
Protein SOGA3	SOGA3	NA	100.0	NA	2	NA	2	NA	2	NA	3.8
Kinesin-like protein KIF27	KIF27	NA	100.0	NA	2	NA	2	NA	2	NA	1.3
Anoctamin-10	ANO10	NA	100.0	NA	2	NA	2	NA	2	NA	0.0
Ubiquitin	UBB	NA	100.0	NA	3	NA	5	NA	11	NA	22.2
Cyclin-dependent kinase-like 2	CDKL2	NA	100.0	NA	2	NA	2	NA	3	NA	4.2
E3 ubiquitin-protein ligase MIB1	MIB1	NA	100.0	NA	3	NA	3	NA	3	NA	4.7
Metalloproteinase inhibitor 1	TIMP1	NA	100.0	NA	2	NA	2	NA	2	NA	13.5
Tyrosine-protein kinase ITK/TSK	ITK	NA	99.9	NA	2	NA	2	NA	2	NA	0.0
Uncharacterized protein KIAA0355	KIAA0355	NA	100.0	NA	2	NA	2	NA	4	NA	0.0
Protein furry homolog-like	FRYL	NA	100.0	NA	3	NA	3	NA	7	NA	0.0
Follistatin-related protein 4	FSTL4	NA	100.0	NA	2	NA	2	NA	4	NA	0.0
SWI/SNF-related matrix-associated actin-dependent regulator of chromatin subfamily A member 5	SMARCA5	NA	100.0	NA	2	NA	2	NA	2	NA	0.0

Isoform 3 of Disks large-associated protein 5	DLGAP5	NA	100.0	NA	2	NA	2	NA	3	NA	2.7
Isoform 3 of Protein FAM161A	FAM161A	NA	100.0	NA	2	NA	2	NA	2	NA	3.1
Fumarylacetoacetase	FAH	NA	100.0	NA	3	NA	3	NA	3	NA	8.6
Isoform 2 of Glioma tumor suppressor candidate region gene 1 protein	GLTSCR1	NA	100.0	NA	2	NA	2	NA	2	NA	2.7
Vigilin (Fragment)	HDLBP	NA	100.0	NA	2	NA	2	NA	2	NA	1.9
Isoform 2 of Ras-GEF domain-containing family member 1A	RASGEF1A	NA	100.0	NA	2	NA	2	NA	3	NA	3.5
BAG family molecular chaperone regulator 3 (Fragment)	BAG3	NA	100.0	NA	2	NA	2	NA	2	NA	9.5
Ankyrin repeat domain-containing protein 36A	ANKRD36	NA	100.0	NA	2	NA	2	NA	2	NA	1.8
Protein S100-A11	S100A11	NA	100.0	NA	2	NA	2	NA	2	NA	23.8
Protein bassoon	BSN	NA	100.0	NA	2	NA	2	NA	2	NA	0.5

Table S4. List of differentially expressed proteins (DEPs) obtained from the TMT quantitative analysis of patients without diabetes

Gene	Protein description	S/N	P value	S/M	P value	M/N	P value
<i>APOE</i>	Apolipoprotein E	1.41	0.100	0.81	0.152	1.66	0.038
<i>IGHM</i>	Isoform 2 of Ig mu chain C region	1.32	0.091	0.82	0.058	1.61	0.023
<i>LGALS3BP</i>	Galectin-3-binding protein	1.66	0.002	0.99	0.490	1.66	0.001
<i>TF</i>	Serotransferrin	1.90	0.025	1.10	0.217	1.96	0.028
<i>PZP</i>	Pregnancy zone protein	0.50	0.000	0.51	0.001	0.98	0.381
<i>S100A9</i>	Protein S100-A9	0.38	0.006	0.57	0.017	0.65	0.038
<i>CRP</i>	C-reactive protein	0.64	0.003	0.71	0.114	0.78	0.186
<i>KNG1</i>	Isoform LMW of Kininogen-1	1.51	0.043	0.84	0.034	1.78	0.028
<i>DNAH2</i>	Dynein heavy chain 2, axonemal	0.54	0.230	1.03	0.441	0.57	0.014
<i>C4A</i>	Complement C4-A	0.48	0.026	1.13	0.418	0.51	0.034
<i>GAPDH</i>	Glyceraldehyde-3-phosphate dehydrogenase	0.67	0.009	0.64	0.011	0.99	0.447
<i>VTDB</i>	Vitamin D-binding protein	1.95	0.015	1.84	0.009	1.06	0.479
<i>MYOM2</i>	Myomesin-2	0.89	0.372	1.55	0.046	0.75	0.122
<i>S100A8</i>	Protein S100-A8	0.32	0.038	0.62	0.109	0.51	0.080
<i>BPIFA1</i>	BPI fold-containing family A member 1	0.40	0.000	0.87	0.343	0.58	0.147
<i>CFHR2</i>	Complement factor H-related protein 2	1.53	0.039	1.14	0.221	1.34	0.080
<i>FSIP2</i>	Fibrous sheath-interacting protein 2	2.86	0.011	1.10	0.376	2.60	0.010
<i>KIAA1551</i>	Uncharacterized protein KIAA1551	0.55	0.171	1.13	0.400	0.50	0.008

<i>MPO</i>	Isoform H7 of Myeloperoxidase	0.55	0.024	0.71	0.187	0.78	0.246
<i>SF3A1</i>	Splicing factor 3A subunit 1	4.29	0.000	0.89	0.363	4.81	0.000
<i>SYNJ1</i>	Synaptojanin-1	1.77	0.119	0.79	0.201	2.25	0.021
<i>TPM4</i>	Isoform 2 of Tropomyosin alpha-4 chain	1.43	0.102	0.61	0.058	2.36	0.004
<i>UACA</i>	Uveal autoantigen with coiled-coil domains and ankyrin repeats	1.38	0.010	0.86	0.151	1.58	0.001
<i>BAX</i>	Isoform Beta of Apoptosis regulator BAX	0.75	0.135	1.15	0.280	0.65	0.049
<i>CEP250</i>	Centrosome-associated protein CEP250	0.48	0.003	0.97	0.481	0.51	0.005
<i>CMIP</i>	C-Maf-inducing protein	0.97	0.401	1.41	0.048	0.65	0.004
<i>DNAH8</i>	Dynein heavy chain 8, axonemal	0.73	0.109	1.24	0.192	0.59	0.019
<i>FAM134B</i>	Isoform 2 of Protein FAM134B	1.58	0.050	0.98	0.498	1.61	0.047
<i>FLNA</i>	Filamin-A	1.37	0.122	0.64	0.025	1.94	0.002
<i>GDI2</i>	Rab GDP dissociation inhibitor beta	0.56	0.187	2.45	0.153	0.23	0.045
<i>ICAM2</i>	Intercellular adhesion molecule 2	0.77	0.163	1.17	0.240	0.66	0.043
<i>MAP4</i>	Microtubule-associated protein	1.15	0.252	0.66	0.021	1.67	0.003
<i>MMP9</i>	Matrix metalloproteinase-9	0.37	0.000	0.71	0.055	0.53	0.038
<i>PARP4</i>	Poly [ADP-ribose] polymerase 4	0.39	0.127	1.96	0.001	0.21	0.041
<i>RAB3A</i>	Ras-related protein Rab-3A	0.63	0.043	1.29	0.156	0.49	0.003
<i>SYNE1</i>	Isoform 4 of Nesprin-1	0.49	0.001	1.12	0.274	0.43	0.000
<i>URB2</i>	Unhealthy ribosome biogenesis protein 2 homolog	0.49	0.003	0.77	0.202	0.64	0.111
<i>ALB</i>	Serum albumin	1.62	0.056	1.16	0.153	1.43	0.064
<i>HP</i>	Haptoglobin	1.68	0.066	1.33	0.137	1.27	0.226

<i>APP</i>	Isoform APP639 of Amyloid beta A4 protein	1.18	0.391	0.95	0.476	1.24	0.362
<i>LYVE1</i>	Lymphatic vessel endothelial hyaluronic acid receptor 1	0.62	0.056	0.94	0.364	0.68	0.110
<i>APC</i>	Isoform Short of Adenomatous polyposis coli protein	1.15	0.229	0.93	0.370	1.28	0.077
<i>ENPP2</i>	Ectonucleotide pyrophosphatase/phosphodiesterase family member 2	0.93	0.345	1.11	0.275	0.84	0.162
<i>SYNE2</i>	Isoform 2 of Nesprin-2	1.00	0.490	1.04	0.390	0.98	0.433
<i>UTRN</i>	Utrophin	0.63	0.188	1.00	0.474	0.61	0.166
<i>ICA1L</i>	Islet cell autoantigen 1-like protein	0.55	0.254	0.64	0.239	0.65	0.204
<i>KANK1</i>	KN motif and ankyrin repeat domain-containing protein 1	1.09	0.459	3.82	0.053	0.29	0.068
<i>KTN1</i>	Isoform 3 of Kinectin	1.23	0.357	0.96	0.482	1.29	0.335
<i>NCAM1</i>	Isoform 2 of Neural cell adhesion molecule 1	1.02	0.490	0.97	0.474	1.06	0.455
<i>NCOR1</i>	Isoform 2 of Nuclear receptor corepressor 1	1.14	0.335	0.97	0.479	1.17	0.305
<i>POLR1B</i>	DNA-directed RNA polymerase I subunit RPA2	1.35	0.146	0.96	0.453	1.20	0.241
<i>SOGA1</i>	Isoform 2 of Protein SOGA1	0.78	0.296	0.78	0.197	1.00	0.473

S/N, severe coronary artery stenosis Vs. normal coronary artery group; S/M, severe coronary artery stenosis Vs. mild-to-moderate coronary artery stenosis group; M/N, mild-to-moderate coronary artery stenosis Vs. normal coronary artery group.

Table S5. List of differentially expressed proteins (DEPs) obtained from the TMT quantitative analysis of patients with diabetes

Gene	Protein description	S/N	P value	S/M	P value	M/N	P value
<i>A2M</i>	Alpha-2-macroglobulin	1.51	0.069	1.74	0.036	0.86	0.444
<i>FGA</i>	Fibrinogen alpha chain	5.89	0.041	1.33	0.153	4.67	0.045
<i>FGB</i>	Fibrinogen beta chain	6.08	0.022	1.33	0.070	4.77	0.025
<i>FGG</i>	Isoform Gamma-A of Fibrinogen gamma chain	10.99	0.009	1.43	0.025	8.19	0.014
<i>ACTB</i>	Actin, cytoplasmic 1	1.42	0.047	1.61	0.004	0.86	0.418
<i>CA1</i>	Carbonic anhydrase 1	0.64	0.023	0.62	0.013	1.11	0.090
<i>LTF</i>	Kaliocin-1 (Fragment)	0.55	0.011	1.37	0.145	0.39	0.017
<i>DSP</i>	Desmoplakin	1.54	0.049	1.88	0.038	0.76	0.195
<i>FBLN1</i>	Fibulin-1	1.66	0.036	0.89	0.154	1.95	0.030
<i>LBP</i>	Lipopolysaccharide-binding protein	0.80	0.274	0.41	0.012	1.96	0.012
<i>APOC2</i>	Apolipoprotein C-II	1.06	0.377	0.85	0.233	1.52	0.014
<i>PFN1</i>	Profilin-1	1.36	0.041	1.52	0.022	0.92	0.473
<i>PPBP</i>	Platelet basic protein	0.59	0.016	1.21	0.162	0.55	0.067
<i>PZP</i>	Pregnancy zone protein	0.48	0.049	0.70	0.109	0.59	0.042
<i>SAA1</i>	Serum amyloid A-1 protein	1.32	0.189	0.15	0.052	9.01	0.048
<i>ANPEP</i>	Aminopeptidase N	0.69	0.076	1.17	0.264	0.62	0.031
<i>GP5</i>	Platelet glycoprotein V	0.42	0.038	1.00	0.463	0.46	0.018
<i>HBB</i>	Hemoglobin subunit beta	0.94	0.439	0.73	0.068	1.64	0.014
<i>MBL2</i>	Mannose-binding protein C	0.63	0.031	0.96	0.320	0.66	0.016

<i>S100A9</i>	Protein S100-A9	1.38	0.015	2.63	0.019	0.50	0.019
<i>SHBG</i>	Sex hormone-binding globulin	0.61	0.073	1.11	0.340	0.53	0.022
<i>CRP</i>	C-reactive protein	1.03	0.169	0.10	0.000	11.07	0.000
<i>LYVE1</i>	Lymphatic vessel endothelial hyaluronic acid receptor 1	0.55	0.001	0.65	0.074	0.96	0.309
<i>PLTP</i>	Phospholipid transfer protein	0.47	0.091	0.81	0.242	0.57	0.042
<i>DCD</i>	Dermcidin	1.31	0.133	1.50	0.036	0.89	0.473
<i>C4A</i>	Complement C4-A	0.51	0.014	0.74	0.219	0.77	0.201
<i>DMXL2</i>	Isoform 3 of DmX-like protein 2	0.66	0.025	1.03	0.495	0.65	0.024
<i>MYOM2</i>	Myomesin-2	0.67	0.128	1.14	0.362	0.59	0.036
<i>PF4</i>	Platelet factor 4	0.48	0.037	1.09	0.347	0.49	0.038
<i>PI16</i>	Peptidase inhibitor 16	0.68	0.069	0.76	0.036	0.89	0.490
<i>S100A8</i>	Protein S100-A8	1.12	0.232	2.45	0.032	0.47	0.110
<i>CD5L</i>	CD5 antigen-like	1.99	0.031	1.28	0.177	1.57	0.047
<i>CEP290</i>	Centrosomal protein of 290 kDa	0.86	0.417	1.30	0.210	0.54	0.031
<i>KIAA1551</i>	Uncharacterized protein KIAA1551	4.01	0.186	0.76	0.289	13.62	0.000
<i>SF3A1</i>	Splicing factor 3A subunit 1	2.37	0.009	2.11	0.007	1.11	0.335
<i>ADAMTS9</i>	A disintegrin and metalloproteinase with thrombospondin motifs 9	0.56	0.034	0.68	0.037	0.83	0.366
<i>AKAP4</i>	A-kinase anchor protein 4	0.89	0.421	0.84	0.035	1.08	0.050
<i>CEP250</i>	Centrosome-associated protein CEP250	0.87	0.433	0.61	0.025	1.42	0.061
<i>CMIP</i>	C-Maf-inducing protein	0.72	0.121	1.37	0.092	0.51	0.001
<i>DEFA3</i>	Neutrophil defensin 3	0.78	0.320	1.75	0.005	0.39	0.003

<i>EIF2B4</i>	Translation initiation factor eIF-2B subunit delta	2.59	0.026	1.29	0.339	2.01	0.069
<i>FLNA</i>	Filamin-A	0.33	0.000	1.16	0.417	0.31	0.029
<i>FNIP1</i>	Folliculin-interacting protein 1	0.12	0.035	1.58	0.277	0.18	0.074
<i>HBA1</i>	Hemoglobin subunit alpha	1.08	0.184	0.71	0.025	1.55	0.004
<i>ICA1L</i>	Islet cell autoantigen 1-like protein	14.36	0.001	1.33	0.088	10.92	0.002
<i>ICAM2</i>	Intercellular adhesion molecule 2	0.55	0.046	0.60	0.284	0.75	0.397
<i>KIAA0196</i>	WASH complex subunit strumpellin	22.06	0.006	1.04	0.497	39.06	0.001
<i>MMP9</i>	Matrix metalloproteinase-9	0.63	0.150	1.46	0.134	0.49	0.037
<i>NINL</i>	Ninein-like protein	1.78	0.075	1.82	0.020	0.99	0.360
<i>PARP4</i>	Poly [ADP-ribose] polymerase 4	0.52	0.008	1.27	0.196	0.45	0.002
<i>PPFIA2</i>	Liprin-alpha-2	1.79	0.006	2.04	0.005	0.88	0.467
<i>SCUBE2</i>	Isoform 2 of Signal peptide, CUB and EGF-like domain-containing protein 2	0.31	0.022	1.10	0.409	0.30	0.021
<i>SYNE1</i>	Isoform 4 of Nesprin-1	0.54	0.013	0.50	0.001	1.08	0.191
<i>DOCK2</i>	Dedicator of cytokinesis protein 2	0.29	0.016	0.51	0.095	0.56	0.019
<i>LAMB1</i>	Laminin subunit beta-1	2.55	0.000	1.80	0.004	1.24	0.121
<i>ITIH3</i>	Isoform 2 of Inter-alpha-trypsin inhibitor heavy chain H3	1.14	0.028	1.21	0.144	0.93	0.392
<i>APOL1</i>	Isoform 2 of Apolipoprotein L1	1.15	0.232	0.72	0.034	1.44	0.016
<i>LRG1</i>	Leucine-rich alpha-2-glycoprotein	0.75	0.294	0.60	0.056	1.27	0.071
<i>HP</i>	Haptoglobin	1.42	0.011	1.47	0.005	0.98	0.239
<i>F13A1</i>	Coagulation factor XIII A chain	1.89	0.055	1.09	0.404	1.47	0.060
<i>GAPDH</i>	Glyceraldehyde-3-phosphate dehydrogenase	1.14	0.140	1.26	0.128	0.92	0.467

<i>MUC16</i>	Mucin-16	0.99	0.418	1.24	0.086	1.04	0.392
<i>YWHAZ</i>	14-3-3 protein zeta/delta (Fragment)	1.41	0.010	1.39	0.166	1.02	0.240
<i>JUP</i>	Junction plakoglobin	1.58	0.150	1.87	0.134	0.84	0.455
<i>UACA</i>	Uveal autoantigen with coiled-coil domains and ankyrin repeats	0.79	0.214	0.85	0.075	0.94	0.381
<i>FGD5</i>	FYVE, RhoGEF and PH domain-containing protein 5	0.79	0.222	0.80	0.113	0.96	0.374
<i>KANK1</i>	Isoform 2 of KN motif and ankyrin repeat domain-containing protein 1	0.79	0.430	1.94	0.233	0.41	0.182
<i>MYCBP2</i>	Probable E3 ubiquitin-protein ligase MYCBP2	0.86	0.418	0.82	0.306	1.04	0.311
<i>NCAPD2</i>	Condensin complex subunit 1	0.86	0.416	0.94	0.364	0.74	0.290

S/N, severe coronary artery stenosis Vs. normal coronary artery group; S/M, severe coronary artery stenosis Vs. mild-to-moderate coronary artery stenosis group; M/N, mild-to-moderate coronary artery stenosis Vs. normal coronary artery group.

Table S6. Transition list for the selected reaction monitoring analysis (SRM) in verification cohort

Gene	Peptide	Type	Precursor ion	MS1 Res	Product ion	MS2 Res	Fragmentor	Collison energy	Dwell time
<i>APOC2</i>	TYLPAVDEK	light	518.6	Unit	771.9	Unit	130	17.1	20
<i>APOC2</i>	TYLPAVDEK	light	518.6	Unit	658.7	Unit	130	17.1	20
<i>APOC2</i>	TYLPAVDEK	light	518.6	Unit	561.6	Unit	130	17.1	20
<i>ARL6IP4</i>	GDGEVLEEIVTK	light	645.2	Unit	931.1	Unit	130	21	20
<i>ARL6IP4</i>	GDGEVLEEIVTK	light	645.2	Unit	832.0	Unit	130	21	20
<i>ARL6IP4</i>	GDGEVLEEIVTK	light	645.2	Unit	718.8	Unit	130	21	20
<i>C18orf8</i>	LEPIVNLLPDK	light	626.3	Unit	1009.2	Unit	130	20.4	20
<i>C18orf8</i>	LEPIVNLLPDK	light	626.3	Unit	359.4	Unit	130	20.4	20
<i>C18orf8</i>	LEPIVNLLPDK	light	626.3	Unit	505.1	Unit	130	20.4	20
<i>C18orf8</i>	ASLPVIATVFDK	light	631.3	Unit	793.9	Unit	130	20.6	20
<i>C18orf8</i>	ASLPVIATVFDK	light	631.3	Unit	680.8	Unit	130	20.6	20
<i>C18orf8</i>	ASLPVIATVFDK	light	631.3	Unit	495.6	Unit	130	20.6	20
<i>C4A</i>	VDFTLSSER	light	527.6	Unit	839.9	Unit	130	17.4	20
<i>C4A</i>	VDFTLSSER	light	527.6	Unit	692.7	Unit	130	17.4	20
<i>C4A</i>	VDFTLSSER	light	527.6	Unit	591.6	Unit	130	17.4	20
<i>C4A</i>	DFALLSLQVPLK	light	672.8	Unit	898.1	Unit	130	21.9	20
<i>C4A</i>	DFALLSLQVPLK	light	672.8	Unit	785.0	Unit	130	21.9	20
<i>C4A</i>	DFALLSLQVPLK	light	672.8	Unit	697.9	Unit	130	21.9	20
<i>CA1</i>	GGPFSDSYR	light	493.5	Unit	774.8	Unit	130	16.3	20

<i>CA1</i>	GGPFSDSYR	light	493.5	Unit	627.6	Unit	130	16.3	20
<i>CA1</i>	GGPFSDSYR	light	493.5	Unit	540.5	Unit	130	16.3	20
<i>CUL5</i>	VSEDLNQAQFK	light	576.1	Unit	965.0	Unit	130	18.9	20
<i>CUL5</i>	VSEDLNQAQFK	light	576.1	Unit	835.9	Unit	130	18.9	20
<i>CUL5</i>	VSEDLNQAQFK	light	576.1	Unit	607.7	Unit	130	18.9	20
<i>DCD</i>	ENAGEDPGLAR	light	565.1	Unit	814.9	Unit	130	18.5	20
<i>DCD</i>	ENAGEDPGLAR	light	565.1	Unit	628.7	Unit	130	18.5	20
<i>DCD</i>	ENAGEDPGLAR	light	565.1	Unit	513.6	Unit	130	18.5	20
<i>DCD</i>	DAVEDLESVGK	light	581.6	Unit	876.9	Unit	130	19	20
<i>DCD</i>	DAVEDLESVGK	light	581.6	Unit	747.8	Unit	130	19	20
<i>DCD</i>	DAVEDLESVGK	light	581.6	Unit	632.7	Unit	130	19	20
<i>DOCK2</i>	DILLPVITK	light	506.6	Unit	784.0	Unit	130	16.7	20
<i>DOCK2</i>	DILLPVITK	light	506.6	Unit	670.9	Unit	130	16.7	20
<i>DOCK2</i>	DILLPVITK	light	506.6	Unit	557.7	Unit	130	16.7	20
<i>FGA</i>	GLIDEVNQDFTNR	light	761.3	Unit	1238.2	Unit	130	24.6	20
<i>FGA</i>	GLIDEVNQDFTNR	light	761.3	Unit	994.0	Unit	130	24.6	20
<i>FGA</i>	GLIDEVNQDFTNR	light	761.3	Unit	894.9	Unit	130	24.6	20
<i>FGA</i>	NSLFEYQK	light	515.1	Unit	827.9	Unit	130	17	20
<i>FGA</i>	NSLFEYQK	light	515.1	Unit	714.8	Unit	130	17	20
<i>FGA</i>	NSLFEYQK	light	515.1	Unit	567.6	Unit	130	17	20
<i>FGA</i>	GGSTSYGTGSETESPR	light	787.3	Unit	1184.2	Unit	130	25.4	20
<i>FGA</i>	GGSTSYGTGSETESPR	light	787.3	Unit	1021.0	Unit	130	25.4	20

<i>FGA</i>	GGSTSYGTGSETESPR	light	787.3	Unit	862.9	Unit	130	25.4	20
<i>FGB</i>	DNENVVNEYSSELEK	light	590.6	Unit	855.9	Unit	130	16.5	20
<i>FGB</i>	DNENVVNEYSSELEK	light	590.6	Unit	692.7	Unit	130	16.5	20
<i>FGB</i>	DNENVVNEYSSELEK	light	590.6	Unit	605.7	Unit	130	16.5	20
<i>FGB</i>	YQISVNK	light	426.5	Unit	688.8	Unit	130	14.2	20
<i>FGB</i>	YQISVNK	light	426.5	Unit	560.7	Unit	130	14.2	20
<i>FGB</i>	YQISVNK	light	426.5	Unit	447.5	Unit	130	14.2	20
<i>FGG</i>	YLQEIYNSNNQK	light	505.5	Unit	867.9	Unit	130	13.4	20
<i>FGB</i>	YLQEIYNSNNQK	light	505.5	Unit	704.7	Unit	130	13.4	20
<i>FGB</i>	YLQEIYNSNNQK	light	505.5	Unit	590.6	Unit	130	13.4	20
<i>GAPDH</i>	GALQNIIPASTGAAK	light	471.5	Unit	702.8	Unit	130	12.2	20
<i>GAPDH</i>	GALQNIIPASTGAAK	light	471.5	Unit	534.6	Unit	130	12.2	20
<i>GAPDH</i>	GALQNIIPASTGAAK	light	471.5	Unit	351.9	Unit	130	12.2	20
<i>VTDB</i>	VLEPTLK	light	400.5	Unit	700.8	Unit	130	13.4	20
<i>VTDB</i>	VLEPTLK	light	400.5	Unit	587.7	Unit	130	13.4	20
<i>VTDB</i>	VLEPTLK	light	400.5	Unit	458.6	Unit	130	13.4	20
<i>HBB</i>	EFTPPVQAAYQK	light	690.3	Unit	1002.2	Unit	130	22.4	20
<i>HBB</i>	EFTPPVQAAYQK	light	690.3	Unit	905.0	Unit	130	22.4	20
<i>HBB</i>	EFTPPVQAAYQK	light	690.3	Unit	501.6	Unit	130	22.4	20
<i>HEG1</i>	SIAGISYGQVR	light	576.2	Unit	951.1	Unit	130	18.9	20
<i>HEG1</i>	SIAGISYGQVR	light	576.2	Unit	709.8	Unit	130	18.9	20
<i>HEG1</i>	SIAGISYGQVR	light	576.2	Unit	622.7	Unit	130	18.9	20
<i>HP</i>	TEGDGVYTLNNEK	light	720.8	Unit	1210.3	Unit	130	23.3	20
<i>HP</i>	TEGDGVYTLNNEK	light	720.8	Unit	1038.1	Unit	130	23.3	20

<i>HP</i>	TEGDGVYTLNNEK	light	720.8	Unit	882.0	Unit	130	23.3	20
<i>IGHG3</i>	ALPAPIEK	light	420.0	Unit	654.8	Unit	130	14	20
<i>IGHG3</i>	ALPAPIEK	light	420.0	Unit	557.7	Unit	130	14	20
<i>IGHG3</i>	ALPAPIEK	light	420.0	Unit	486.6	Unit	130	14	20
<i>IGHG3</i>	EPQVYTLPPSR	light	644.2	Unit	834.0	Unit	130	21	20
<i>IGHG3</i>	EPQVYTLPPSR	light	644.2	Unit	670.8	Unit	130	21	20
<i>IGHG3</i>	EPQVYTLPPSR	light	644.2	Unit	456.5	Unit	130	21	20
<i>LAMB1</i>	ISGVIGPYR	light	481.6	Unit	761.9	Unit	130	15.9	20
<i>LAMB1</i>	ISGVIGPYR	light	481.6	Unit	605.7	Unit	130	15.9	20
<i>LAMB1</i>	ISGVIGPYR	light	481.6	Unit	492.6	Unit	130	15.9	20
<i>LAMB1</i>	DILAQSPAAEPLK	light	677.3	Unit	941.1	Unit	130	22	20
<i>LAMB1</i>	DILAQSPAAEPLK	light	677.3	Unit	812.9	Unit	130	22	20
<i>LAMB1</i>	DILAQSPAAEPLK	light	677.3	Unit	725.9	Unit	130	22	20
<i>LBP</i>	ITLPDFTGDLR	light	624.7	Unit	921.0	Unit	130	20.4	20
<i>LBP</i>	ITLPDFTGDLR	light	624.7	Unit	823.9	Unit	130	20.4	20
<i>LBP</i>	ITLPDFTGDLR	light	624.7	Unit	708.8	Unit	130	20.4	20
<i>LYZ</i>	STDYGIFQINSR	light	701.3	Unit	1098.2	Unit	130	22.7	20
<i>LYZ</i>	STDYGIFQINSR	light	701.3	Unit	935.1	Unit	130	22.7	20
<i>LYZ</i>	STDYGIFQINSR	light	701.3	Unit	764.9	Unit	130	22.7	20
<i>MED23</i>	ALILTLAR	light	436.1	Unit	686.9	Unit	130	14.5	20
<i>MED23</i>	ALILTLAR	light	436.1	Unit	573.7	Unit	130	14.5	20
<i>MED23</i>	ALILTLAR	light	436.1	Unit	460.6	Unit	130	14.5	20
<i>NRP1</i>	IAPPPVSSGPFLFIK	light	557.3	Unit	822.0	Unit	130	15.3	20
<i>NRP1</i>	IAPPPVSSGPFLFIK	light	557.3	Unit	765.0	Unit	130	15.3	20

<i>NRP1</i>	IAPPPVVSSGPFLFIK	light	557.3	Unit	743.4	Unit	130	15.3	20
<i>PARP4</i>	NGETAQLQK	light	559.6	Unit	817.9	Unit	130	18.3	20
<i>PARP4</i>	NGETAQLQK	light	559.6	Unit	716.8	Unit	130	18.3	20
<i>PARP4</i>	NGETAQLQK	light	559.6	Unit	645.7	Unit	130	18.3	20
<i>PLEKHA6</i>	ANGLPAGPEPASEPGSPYPEGPR	light	750.1	Unit	815.9	Unit	130	22.2	20
<i>PLEKHA6</i>	ANGLPAGPEPASEPGSPYPEGPR	light	750.1	Unit	947.0	Unit	130	22.2	20
<i>PLEKHA6</i>	ANGLPAGPEPASEPGSPYPEGPR	light	750.1	Unit	529.1	Unit	130	22.2	20
<i>CXCL7</i>	NIQSLEVIGK	light	551.1	Unit	874.0	Unit	130	18.1	20
<i>CXCL7</i>	NIQSLEVIGK	light	551.1	Unit	745.9	Unit	130	18.1	20
<i>CXCL7</i>	NIQSLEVIGK	light	551.1	Unit	658.8	Unit	130	18.1	20
<i>SERPINA1</i>	ITPNLAEFASLYR	light	548.3	Unit	756.9	Unit	130	14.9	20
<i>SERPINA1</i>	ITPNLAEFASLYR	light	548.3	Unit	685.8	Unit	130	14.9	20
<i>SERPINA1</i>	ITPNLAEFASLYR	light	548.3	Unit	714.8	Unit	130	14.9	20
<i>TF</i>	EGYYGYTGAFR	light	642.7	Unit	935.0	Unit	130	20.9	20
<i>TF</i>	EGYYGYTGAFR	light	642.7	Unit	771.8	Unit	130	20.9	20
<i>TF</i>	EGYYGYTGAFR	light	642.7	Unit	714.8	Unit	130	20.9	20
<i>TF</i>	YLGEEYVK	light	501.1	Unit	837.9	Unit	130	16.5	20
<i>TF</i>	YLGEEYVK	light	501.1	Unit	724.8	Unit	130	16.5	20
<i>TF</i>	YLGEEYVK	light	501.1	Unit	538.6	Unit	130	16.5	20

Table S7. Information list of transition and elute time for the selected reaction monitoring analysis (SRM) in validation cohort

Gene	Peptide	Light /Heavy	Precursor ion	MS1 Res	Product ion	MS2 Res	Fragmentor	Collison energy	Elute time (minute)	Delta Ret time*
<i>APOC2</i>	TYLPAVDEK	Light	518.3	Unit	771.4	Unit	380	17.1	19.4	2
<i>APOC2</i>	TYLPAVDEK	Light	518.3	Unit	658.3	Unit	380	17.1	19.4	2
<i>APOC2</i>	TYLPAVDEK	Light	518.3	Unit	561.3	Unit	380	17.1	19.4	2
<i>APOC2</i>	TYLPAVDEK	Heavy	521.3	Unit	777.4	Unit	380	17.1	19.4	2
<i>APOC2</i>	TYLPAVDEK	Heavy	521.3	Unit	664.4	Unit	380	17.1	19.4	2
<i>APOC2</i>	TYLPAVDEK	Heavy	521.3	Unit	567.3	Unit	380	17.1	19.4	2
<i>C4A</i>	VDFTLSSER	Light	527.3	Unit	839.4	Unit	380	17.3	20.5	2
<i>C4A</i>	VDFTLSSER	Light	527.3	Unit	692.4	Unit	380	17.3	20.5	2
<i>C4A</i>	VDFTLSSER	Light	527.3	Unit	591.3	Unit	380	17.3	20.5	2
<i>C4A</i>	VDFTLSSER	Heavy	530.3	Unit	845.4	Unit	380	17.3	20.5	2
<i>C4A</i>	VDFTLSSER	Heavy	530.3	Unit	698.4	Unit	380	17.3	20.5	2
<i>C4A</i>	VDFTLSSER	Heavy	530.3	Unit	597.3	Unit	380	17.3	20.5	2
<i>DOCK2</i>	DILLPVITK	Light	506.3	Unit	783.5	Unit	380	16.7	23.5	2
<i>DOCK2</i>	DILLPVITK	Light	506.3	Unit	670.4	Unit	380	16.7	23.5	2
<i>DOCK2</i>	DILLPVITK	Light	506.3	Unit	557.4	Unit	380	16.7	23.5	2
<i>DOCK2</i>	DILLPVITK	Heavy	509.8	Unit	790.6	Unit	380	16.7	23.5	2
<i>DOCK2</i>	DILLPVITK	Heavy	509.8	Unit	677.5	Unit	380	16.7	23.5	2
<i>DOCK2</i>	DILLPVITK	Heavy	509.8	Unit	564.4	Unit	380	16.7	23.5	2

<i>LAMB1</i>	ISGVIGPYR	Light	481.3	Unit	848.5	Unit	380	15.9	20.0	2
<i>LAMB1</i>	ISGVIGPYR	Light	481.3	Unit	761.4	Unit	380	15.9	20.0	2
<i>LAMB1</i>	ISGVIGPYR	Light	481.3	Unit	605.3	Unit	380	15.9	20.0	2
<i>LAMB1</i>	ISGVIGPYR	Heavy	482.8	Unit	851.5	Unit	380	15.9	20.0	2
<i>LAMB1</i>	ISGVIGPYR	Heavy	482.8	Unit	764.4	Unit	380	15.9	20.0	2
<i>LAMB1</i>	ISGVIGPYR	Heavy	482.8	Unit	608.3	Unit	380	15.9	20.0	2
<i>LBP</i>	ITLPDFTGDLR	Light	624.3	Unit	920.4	Unit	380	20.4	23.5	2
<i>LBP</i>	ITLPDFTGDLR	Light	624.3	Unit	823.4	Unit	380	20.4	23.5	2
<i>LBP</i>	ITLPDFTGDLR	Light	624.3	Unit	708.4	Unit	380	20.4	23.5	2
<i>LBP</i>	ITLPDFTGDLR	Heavy	625.8	Unit	923.5	Unit	380	20.4	23.5	2
<i>LBP</i>	ITLPDFTGDLR	Heavy	625.8	Unit	826.4	Unit	380	20.4	23.5	2
<i>LBP</i>	ITLPDFTGDLR	Heavy	625.8	Unit	711.4	Unit	380	20.4	23.5	2
<i>CXCL7</i>	NIQSLEVIGK	Light	550.8	Unit	873.5	Unit	380	18.1	21.5	2
<i>CXCL7</i>	NIQSLEVIGK	Light	550.8	Unit	745.4	Unit	380	18.1	21.5	2
<i>CXCL7</i>	NIQSLEVIGK	Light	550.8	Unit	658.4	Unit	380	18.1	21.5	2
<i>CXCL7</i>	NIQSLEVIGK	Heavy	552.3	Unit	876.5	Unit	380	18.1	21.5	2
<i>CXCL7</i>	NIQSLEVIGK	Heavy	552.3	Unit	748.4	Unit	380	18.1	21.5	2
<i>CXCL7</i>	NIQSLEVIGK	Heavy	552.3	Unit	661.4	Unit	380	18.1	21.5	2
<i>VTDB</i>	VLEPTLK	Light	400.2	Unit	587.3	Unit	380	13.4	18.6	2
<i>VTDB</i>	VLEPTLK	Light	400.2	Unit	458.3	Unit	380	13.4	18.6	2
<i>VTDB</i>	VLEPTLK	Light	400.2	Unit	361.2	Unit	380	13.4	18.6	2
<i>VTDB</i>	VLEPTLK	Heavy	403.8	Unit	594.4	Unit	380	13.4	18.6	2
<i>VTDB</i>	VLEPTLK	Heavy	403.8	Unit	465.3	Unit	380	13.4	18.6	2

<i>VTDB</i>	VLEPTLK	Heavy	403.8	Unit	368.3	Unit	380	13.4	18.6	2
<i>VTDB</i>	VLEPTLK	Heavy	403.8	Unit	368.3	Unit	380	13.4	18.6	2

APOC2, apolipoprotein C-II; C4A, complement component 4A; DOCK2, dedicator of cytokinesis 2; LAMB1, laminin β 1 subunit; LBP, human lipopolysaccharide-binding protein; CXCL7, Chemokine (C-X-C motif) ligand 7; VTDB, vitamin D binding protein. *Delta Ret Time means the time window for scheduled SRM

Figure S1. Quantification of candidate biomarkers via label-free multiple reaction monitoring (MRM) analysis for verification of differentially expressed proteins

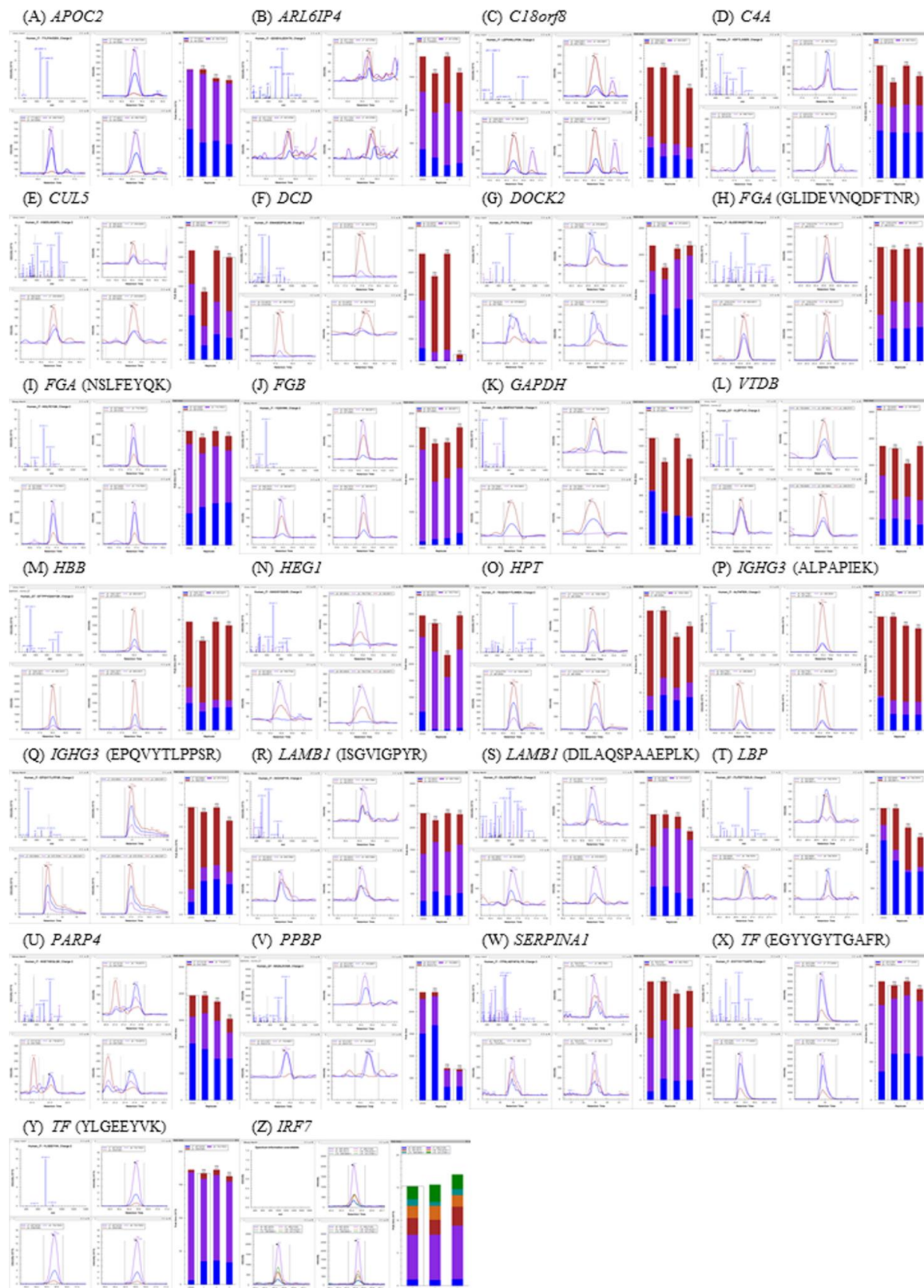


Figure S2. The concentration curve of SI peptides using multiple reaction monitoring (MRM) analysis with isotopically labeled peptides.

