

Figure S1

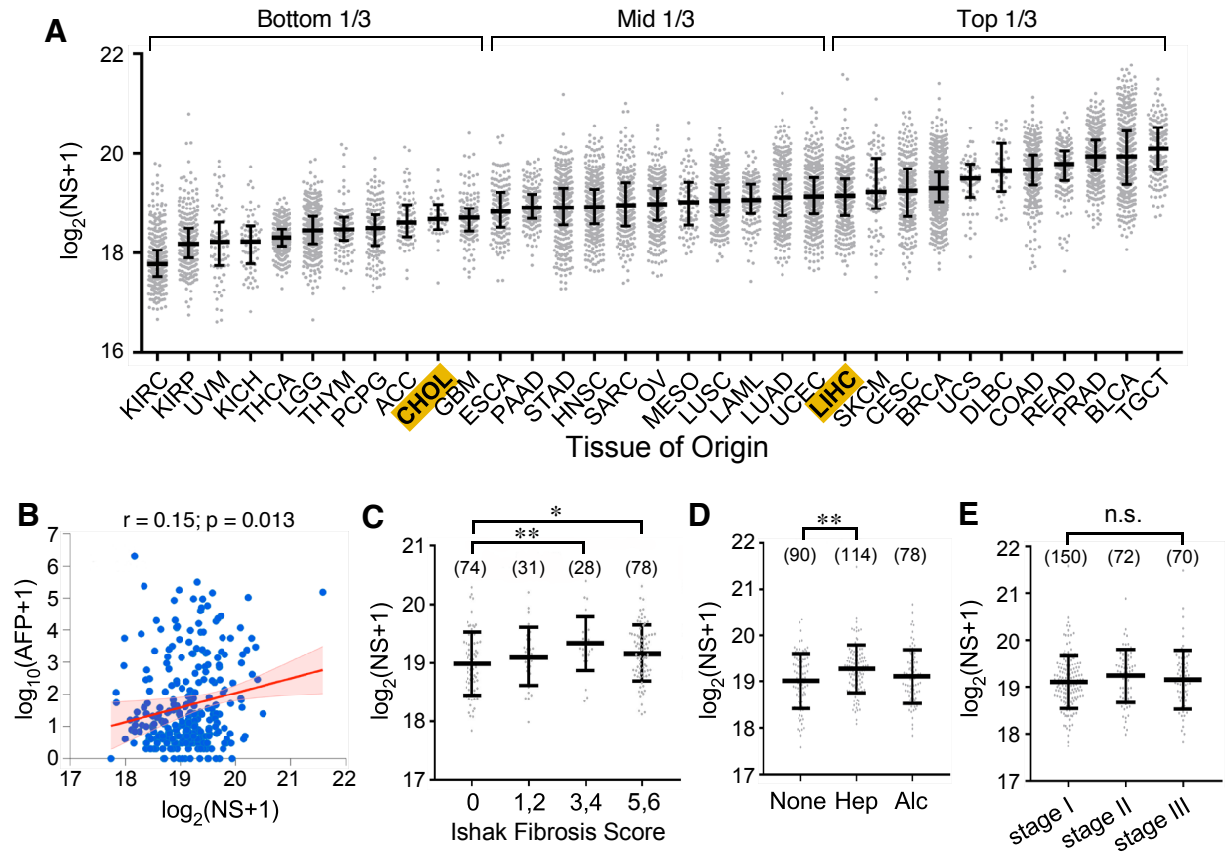


Figure S2

**A**

**Univariate (log-rank)**

	OS			PFS		
	Haz	p	Size	Haz	p	Size
KIRC (kidney renal clear cell carcinoma)	<b>2.19</b>	<b>&lt;0.001</b>	524	<b>2.27</b>	<b>&lt;0.001</b>	522
LIHC (hepatocellular carcinoma)	<b>1.45</b>	<b>0.029</b>	368	<b>1.44</b>	<b>0.018</b>	368
PAAD (pancreatic adenocarcinoma)	<b>1.63</b>	<b>0.018</b>	177	<b>1.82</b>	<b>0.002</b>	177
PRAD (prostate adenocarcinoma)	6.29	0.037	479	1.48	0.064	479
SARC (sarcoma)	1.81	0.003	258	1.35	0.072	258
LGG (low grade glioma)	0.72	0.063	497	0.71	0.019	497
ACC (adrenocortical carcinoma)	2.30	0.034	78	1.52	0.183	78
SKCM (skin cutaneous melanoma)	1.75	0.123	103	2.59	0.005	103
BLCA (bladder urothelial carcinoma)	0.77	0.080	403	0.62	0.002	404
COAD (colorectal adenocarcinoma)	0.73	0.109	450	0.65	0.017	450
READ (rectum adenocarcinoma)	0.44	0.034	162	0.74	0.345	162

**B**

**Multivariate (Cox)**

	OS		PFS	
	Haz	p	Haz	p
	<b>1.97</b>	<b>&lt;0.001</b>	<b>1.72</b>	<b>0.001</b>
	<b>1.51</b>	<b>0.039</b>	<b>1.61</b>	<b>0.004</b>
	1.56	0.048	1.41	0.113
	n.a.		n.a.	
	n.a.		n.a.	
	0.86	0.428	0.75	0.061
	1.87	0.110	1.82	0.059
	2.15	0.060	3.43	0.001
	0.74	0.065	0.65	0.009
	0.70	0.109	0.67	0.051
	0.51	0.149	0.61	0.193

Figure S3

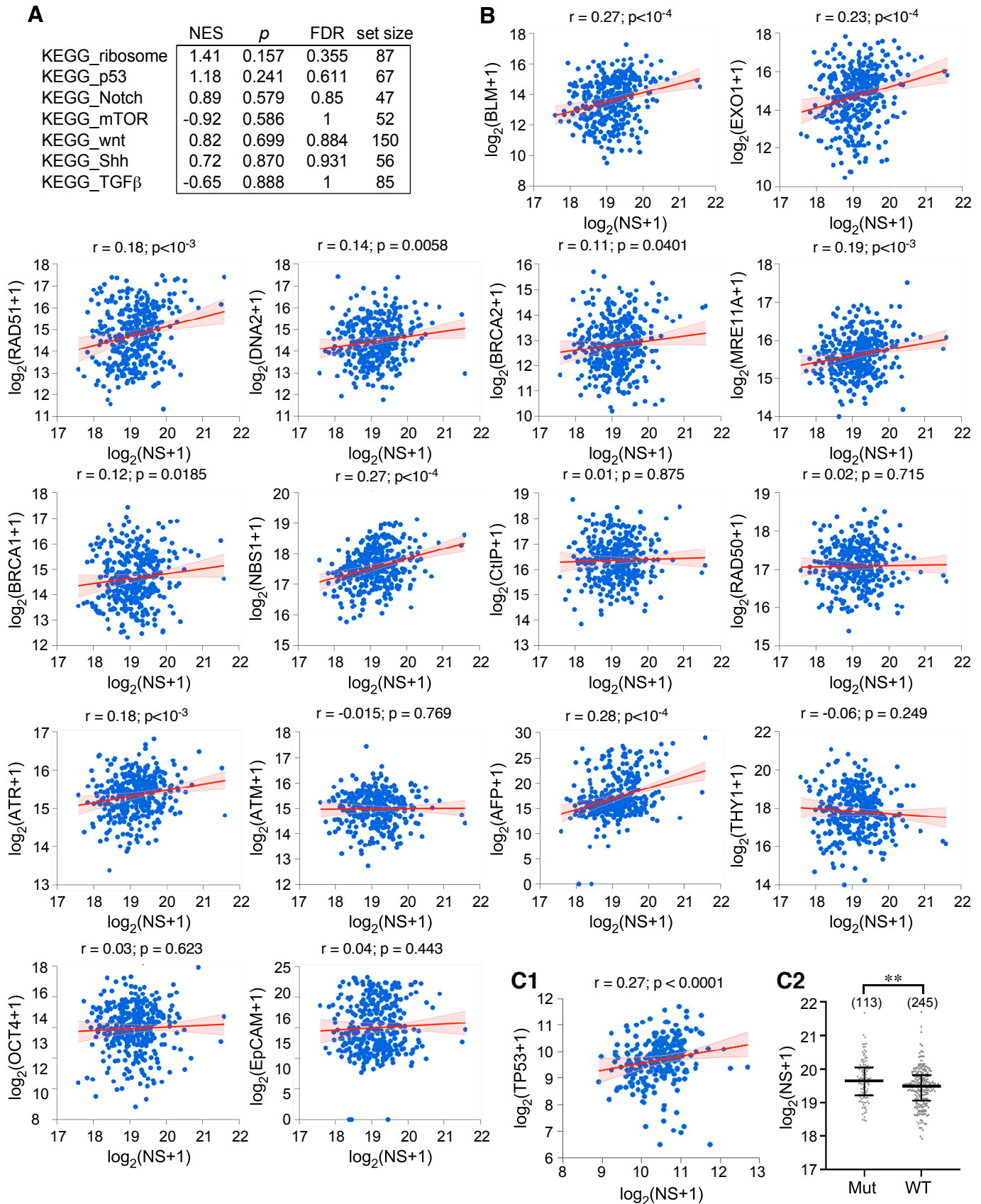
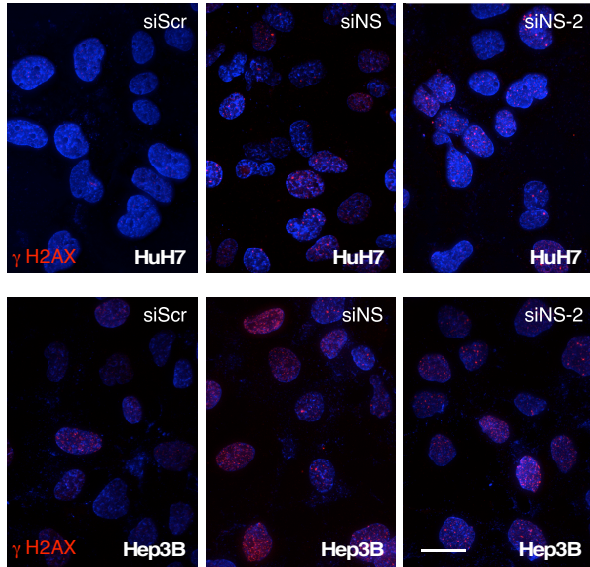


Figure S4

**A**



**B**

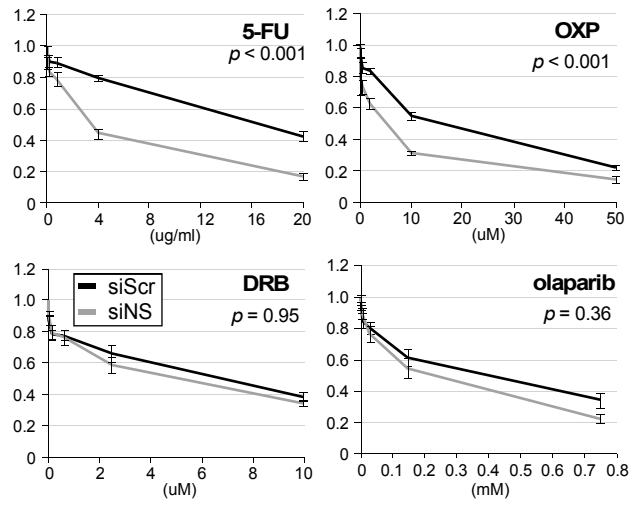


Figure S5

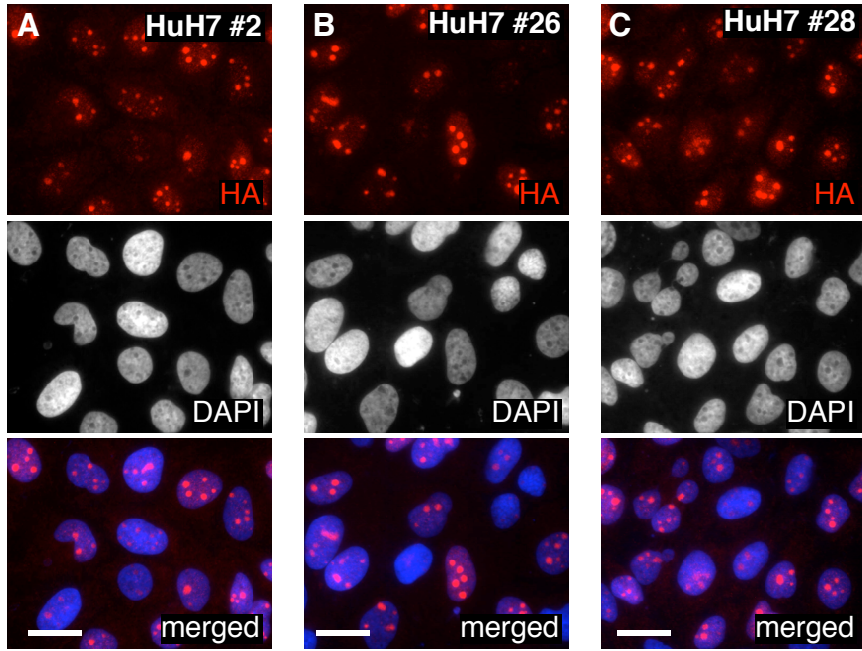


Figure S6

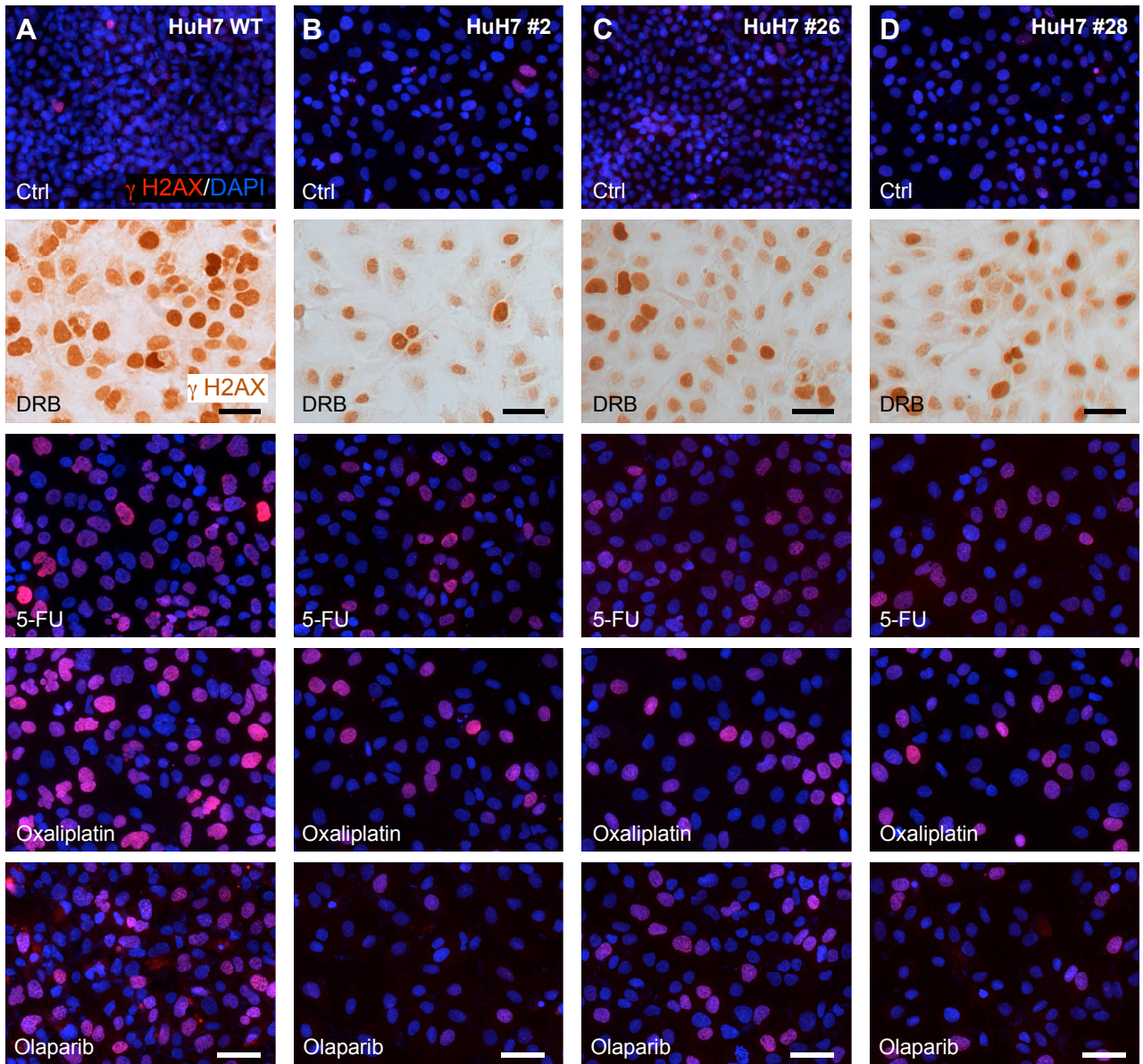


Figure S7

