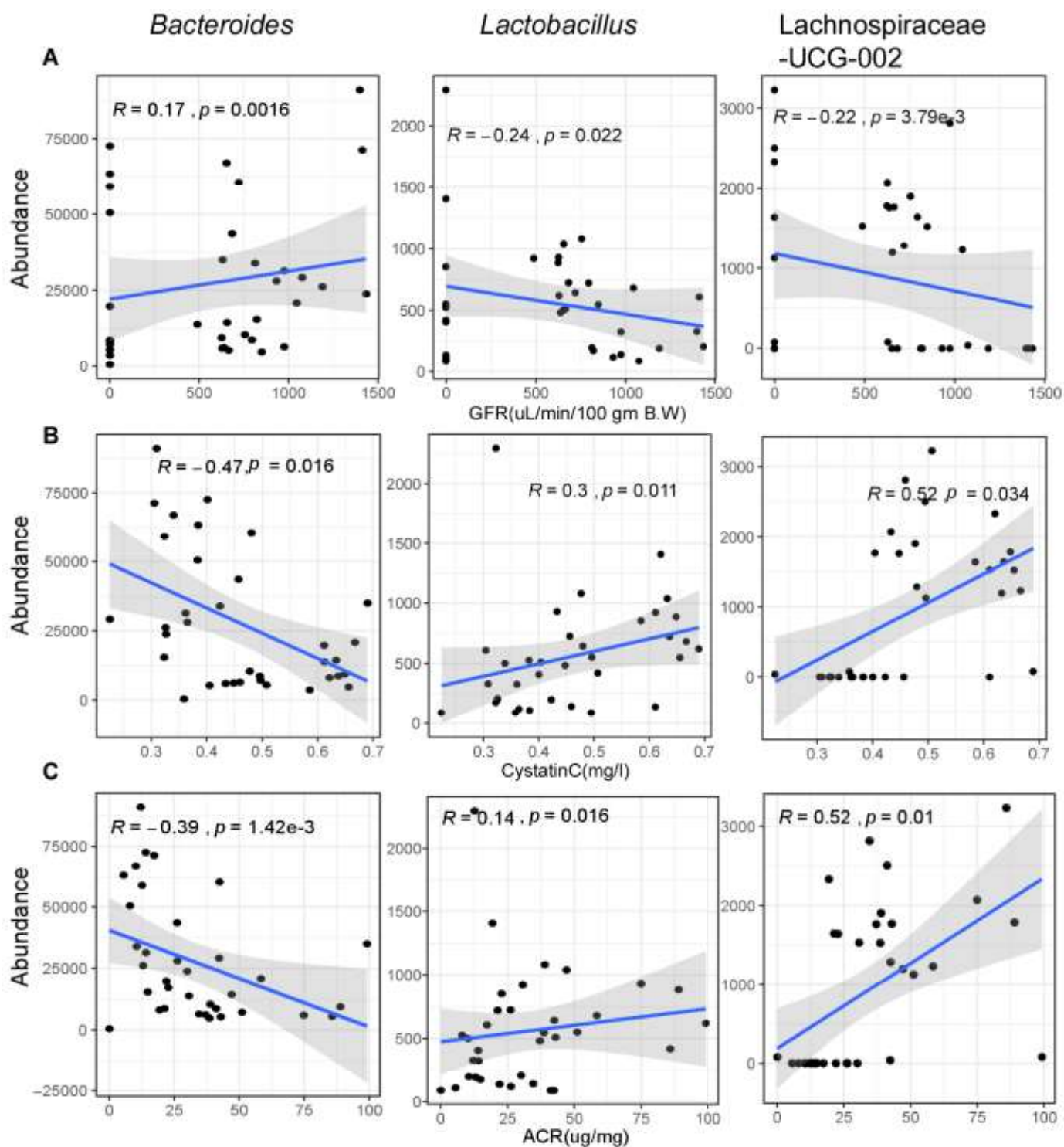


SUPPLEMENTAL MATERIALS

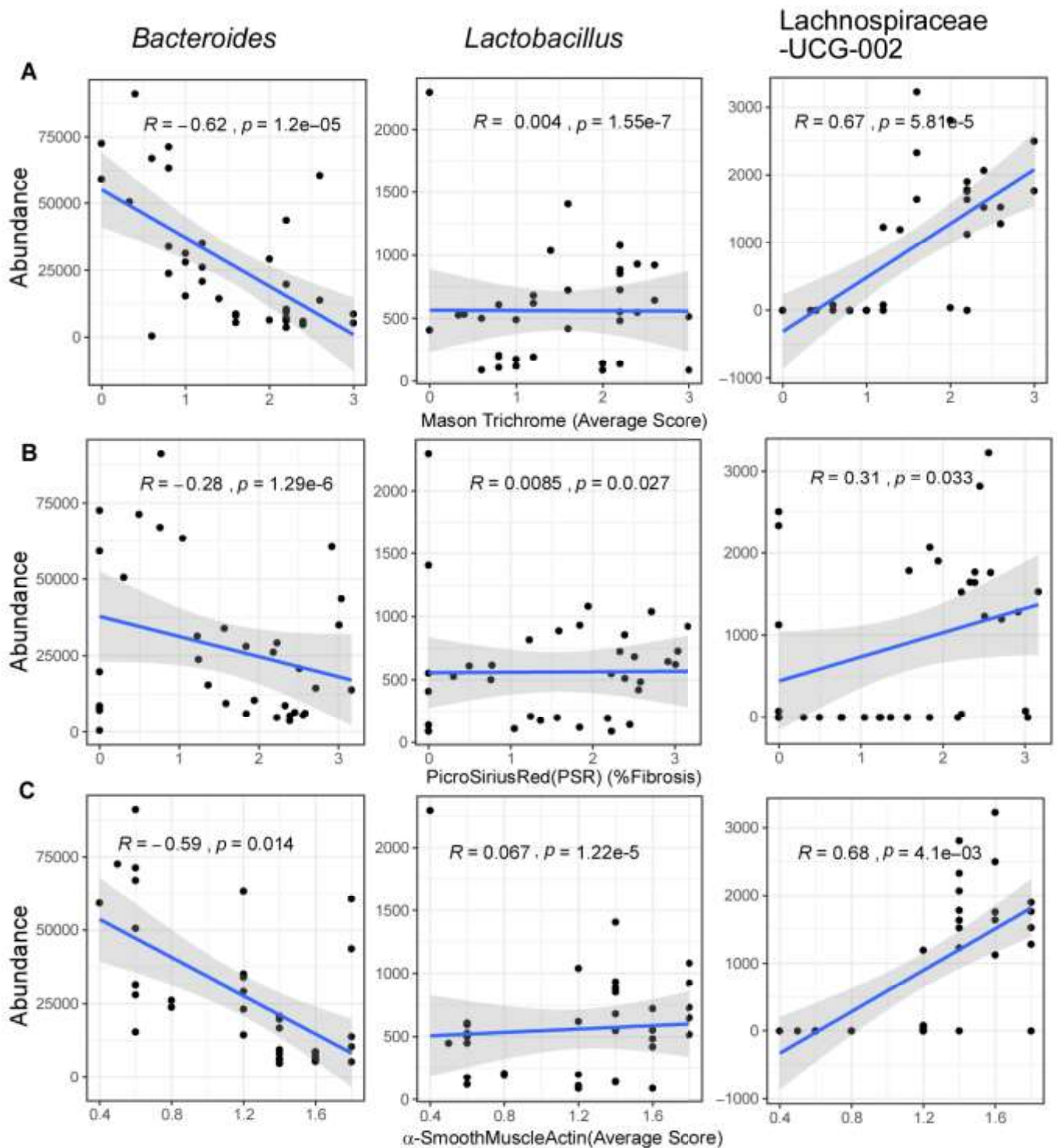
Targeted inhibition of gut microbial TMAO production reduces renal tubulointerstitial fibrosis and functional impairment in a murine model of chronic kidney disease

Nilaksh Gupta^{1,2}, Jennifer A. Buffa^{1,2}, Adam B Roberts^{1,2}, Naseer Sangwan^{1,2}, Sarah M. Skye^{1,2}, Lin Li^{1,2}, Karen J. Ho⁴, John Varga⁵, Joseph A. DiDonato^{1,2}, W.H. Wilson Tang^{1,2,3}, Stanley L. Hazen^{1,2,3}

Department of ¹Cardiovascular & Metabolic Sciences, Lerner Research Institute; ²Center for Microbiome & Human Health; and ³Department of Cardiovascular Medicine, Heart and Vascular Institute; Cleveland Clinic, Cleveland, OH 44195. ⁴Division of Vascular Surgery, Northwestern University Feinberg School of Medicine, Chicago, IL. ⁵Division of Rheumatology, Northwestern University, Chicago, IL.



Supplementary Figure I. Linear regression based scatter plots showing correlation between abundance of select taxa and renal functional markers. **(A)** GFR($\mu\text{L}/\text{min}/100 \text{ gm B.W}$) **(B)** CystatinC(mg/l) and, **(C)** ACR($\mu\text{g}/\text{mg}$) levels. The R^2 and p -values are plotted within each panel.



Supplementary Figure II. Linear regression based scatter plots showing correlation between abundance of select taxa and renal histologic and immunohistologic measures. **(A)** Mason trichrome **(B)** Picrosirius red and, **(C)** α -SMA. The R^2 and p -values are plotted within each panel.

Major Resources Table

Animals (in vivo studies)

Species	Vendor or Source	Background Strain	Sex	Persistent ID / URL
Mouse	The Jackson Laboratory	C57BL/6J	Males	

Reagents

Name	Vendor or Source	Catalog #	Working concentration	Lot # (preferred but not required)	Persistent ID / URL
Picosirius Red (Direct Red 80)	Sigma	365548	0.5gm in 500 ml picric acid		https://www.sigmaaldrich.com/catalog/product/sial/365548?lang=en&region=US
Picric Acid (Saturated aqueous solution)	Sigma	P6744		SHBF8110V	https://www.sigmaaldrich.com/catalog/product/sigma/p6744?lang=en&region=US
Mouse/Rat Cystatin C Quantikine ELISA Kit	R&D	MSCTC0	1:200 dilution of plasma	P162717	https://www.rndsystems.com/products/mouse-rat-cystatin-c-quantikine-elisa-kit_msctc0
Albuwell M (Mouse Albumin Elisa kit)	Ethos Biosciences	1011	1:13 dilution of urine	18H16K	https://www.ethosbiosciences.com/collections/albumin/products/albuwell-m
(-)-Isoproterenol hydrochloride	Sigma	I6504-1G	30mg/kg/day	SLBR3848V	https://www.sigmaaldrich.com/catalog/product/sigma/i6504?lang=en&region=US
FITC-Sinistrin	Medibeacon	FTC-FS001	7.5mg/100gm body weight	VE17171921	
RNeasy	Qiagen	74704		151017857	
High-Capacity cDNA Reverse Transcription Kit	Thermo Fisher Scientific	4368814		005144386	https://www.thermofisher.com/order/catalog/product/4368814#/4368814
Osmotic Pumps	Alzet	1004		10382-17	
TaqMan Fast Universal PCR Master	Thermo Fisher Scientific	4352042		00730474	https://www.thermofisher.com/order/catalog/product/

Mix (2X), no AmpErase UNG					4352042?SID=srch-hj-4352042#/4352042?SID=srch-hj-4352042
Anti-alpha smooth muscle Actin antibody	Abcam	Ab5694	0.4µg/ml (1:500 dilution)	825197	https://www.abcam.com/alpha-smooth-muscle-actin-antibody-ab5694.html
Biotin-SP (long spacer) AffiniPure Donkey Anti-Rabbit IgG (H+L)	Jackson ImmunoResearch Laboratories, Inc.	711-065-152	4µg/ml (1:250 dilution)		https://www.jacksonimmuno.com/catalog/products/711-065-152

TaqManPrimers

Name	Catalog#	Source	Persistent ID / URL
GAPDH	Mm99999915_g1	Thermo Fisher Scientific	https://www.thermofisher.com/order/genome-database/?pearUXVerSuffix=pearUX2&elcanoForm=true#!/ge/assays/ge_all/?keyword=mm99999915_g1
TGF-beta	Mm01227699_m1	Thermo Fisher Scientific	https://www.thermofisher.com/order/genome-database/?pearUXVerSuffix=pearUX2&elcanoForm=true#!/ge/assays/ge_all/?keyword=Mm01227699_m1
Col1a1	Mm00801666_g1	Thermo Fisher Scientific	https://www.thermofisher.com/order/genome-database/?pearUXVerSuffix=pearUX2&elcanoForm=true#!/ge/assays/ge_all/?keyword=Mm00801666_g1
TIMP1	Mm01341361_m1	Thermo Fisher Scientific	https://www.thermofisher.com/order/genome-database/?pearUXVerSuffix=pearUX2&elcanoForm=true#!/ge/assays/ge_all/?keyword=Mm01341361_m1
Alpha-SMA	Mm00725412_s1	Thermo Fisher Scientific	https://www.thermofisher.com/order/genome-database/?pearUXVerSuffix=pearUX2&elcanoForm=true#!/ge/assays/ge_all/?keyword=Mm00725412_s1

Experimental Diets

Diet	Vendor	Persistent ID / URL
Control Diet (0.08gm% total choline)	Envigo	TD.130104
1.2% Choline Chloride	Envigo	TD.09041
0.3% TMAO	Envigo	TD.07865
Choline diet +0.06gm% IMC	Envigo	TD.150812